

## Threading the Machine

See threading chart fig 1 Take thread from spool on cotton stud, through thread guide stud NO. 6146 and thread tension guide NO. 6139 of first hole, forward and over between the tension discs NO. 6143 through NO. 6139 of second hole, down and through the hole in the needle bar tension plate NO. 6046.

Now turn the machine pulley until the needle bar tension plunger NO. 6042 opens, and open front feed disc, pass thread under the needle and back under the needle bar into thread slot in the needle bar tension plate.

Loop thread over tension plunger NO. 6042 draw forward, close up under the needle bar and into hole in the tension plate through which the needle protrudes.

Now, from the underside, pass the thread up through the needle eye.

### Thread Tension :

the tension on the needle thread is regulating by turning thread nut NO. 6145 at the left of thread tension.

To increase thread tension, turn the tension nut toward you (clockwise).

To decrease the tension, turn the tension nut away from you (counter clockwise).

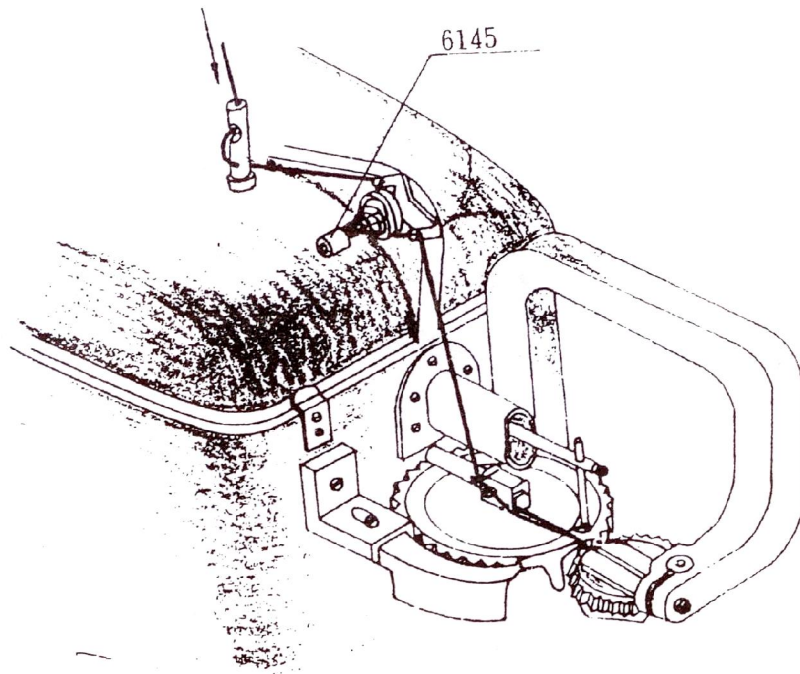


FIG. 1

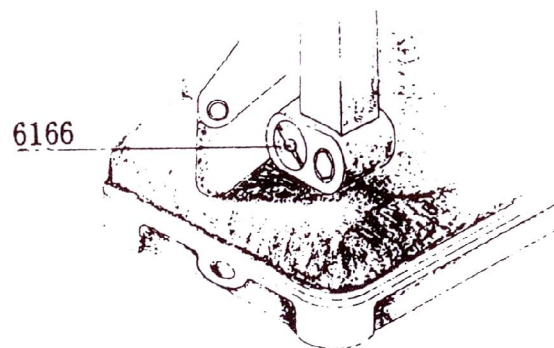


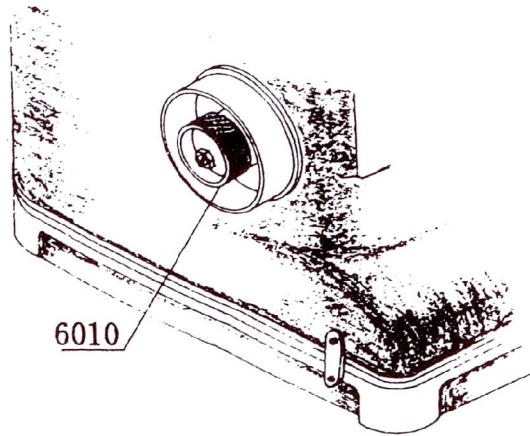
FIG. 2

### Regulating the Pressure of the Feed Discs :

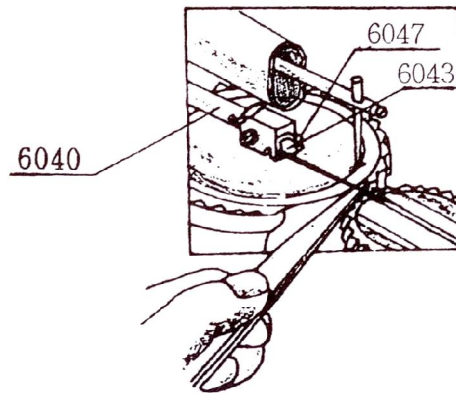
The pressure between the feed discs may be increased by turning pressure lever adjusting screw NO. 6166 to the right, or decreased by turning this screw to the left.

## Changing the stitch Length :

Loosen the stitch regulating stud nut NO. 6010 on the left side of the machine. Turn the regulating stud nut to clockwise for shorter stitch, or counter clockwise for a longer stitch. Then, tighten this nut firmly.



**FIG. 3**



**FIG. 4**

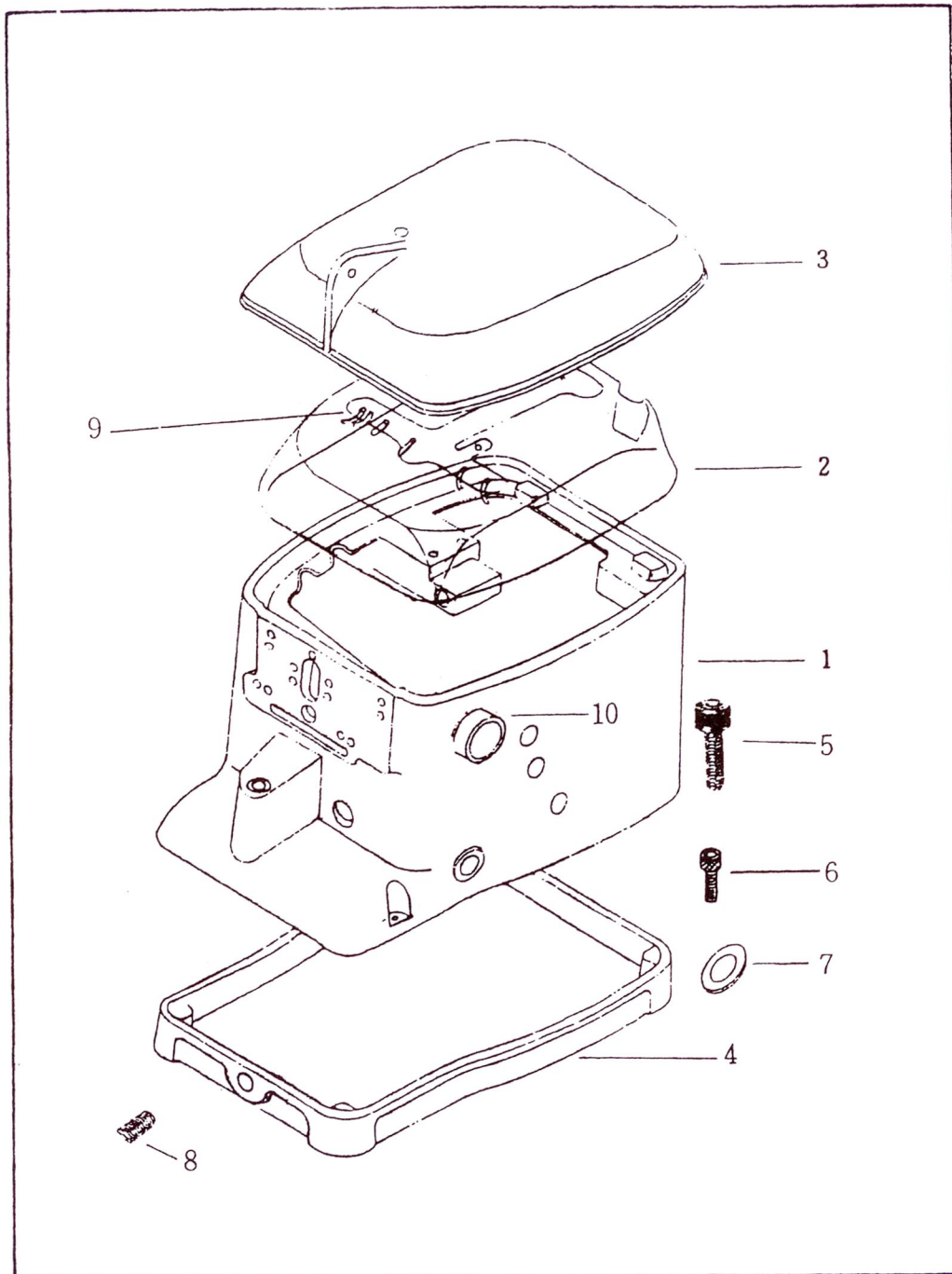
## Replacing the Needle :

Turn the belt wheel until the looper swings out of the way and open the feed discs.

With tweezers, hold the needle with short groove up, place it into the needle groove in the needle bar slot where the needle clamp NO. 6043 hold it and push it back as far as it will go.

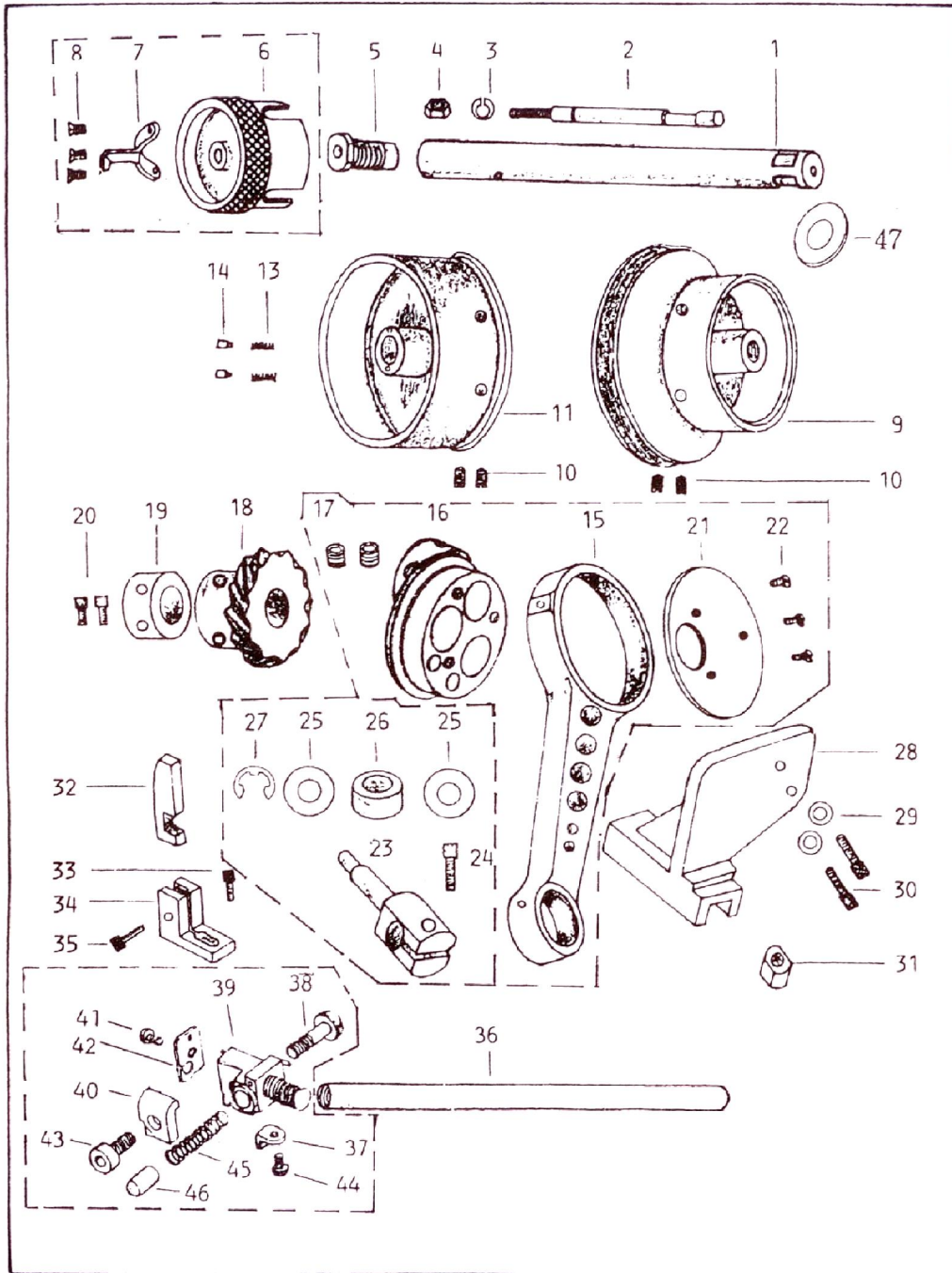
### **Tighten the Needle Clamp Screw no. 6047.**

Never release needle clamp more than is necessary to free the needle and before inserting the needle, make sure there is no piece of a broken needle left in the groove.

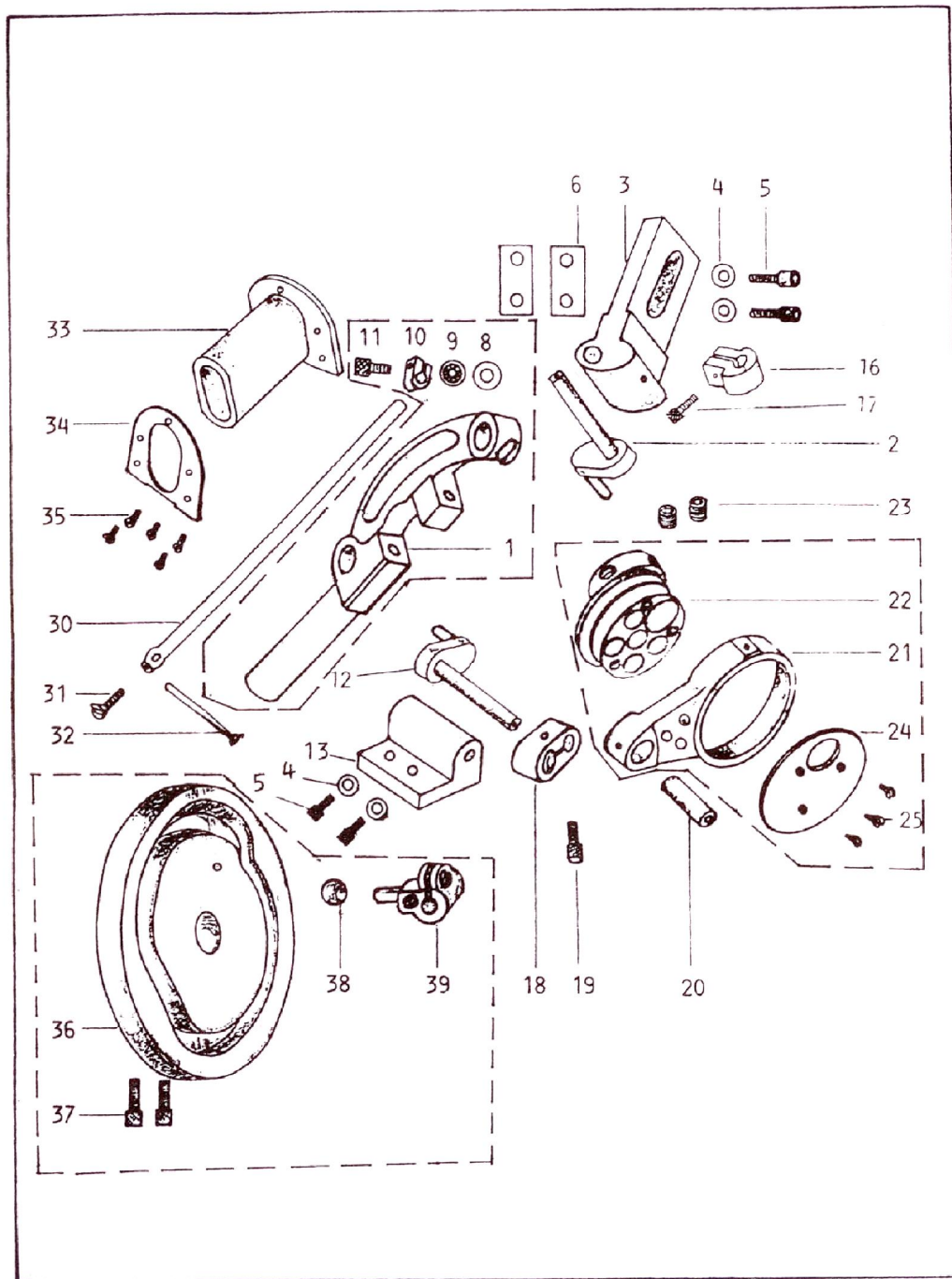


Ref.NO.	Parts.NO.	Description	CN600-10	CN600-20	CN600-30
1	6001	Main Frame	1	1	1
2	6002	Lubricant Cover	1	1	1
3	6003	Top Cover	1	1	1
4	6004	Base Plate	1	1	1
5	6221	Screw 6×25	2	2	2
6	6222	Screw 6×8	2	2	2
7	6223	Washer	2	2	2
8	6224	SET Screw 6×8	1	1	1
9	6225	Brass Tube	7	7	7
10	6226	Hold Bush	2	2	2

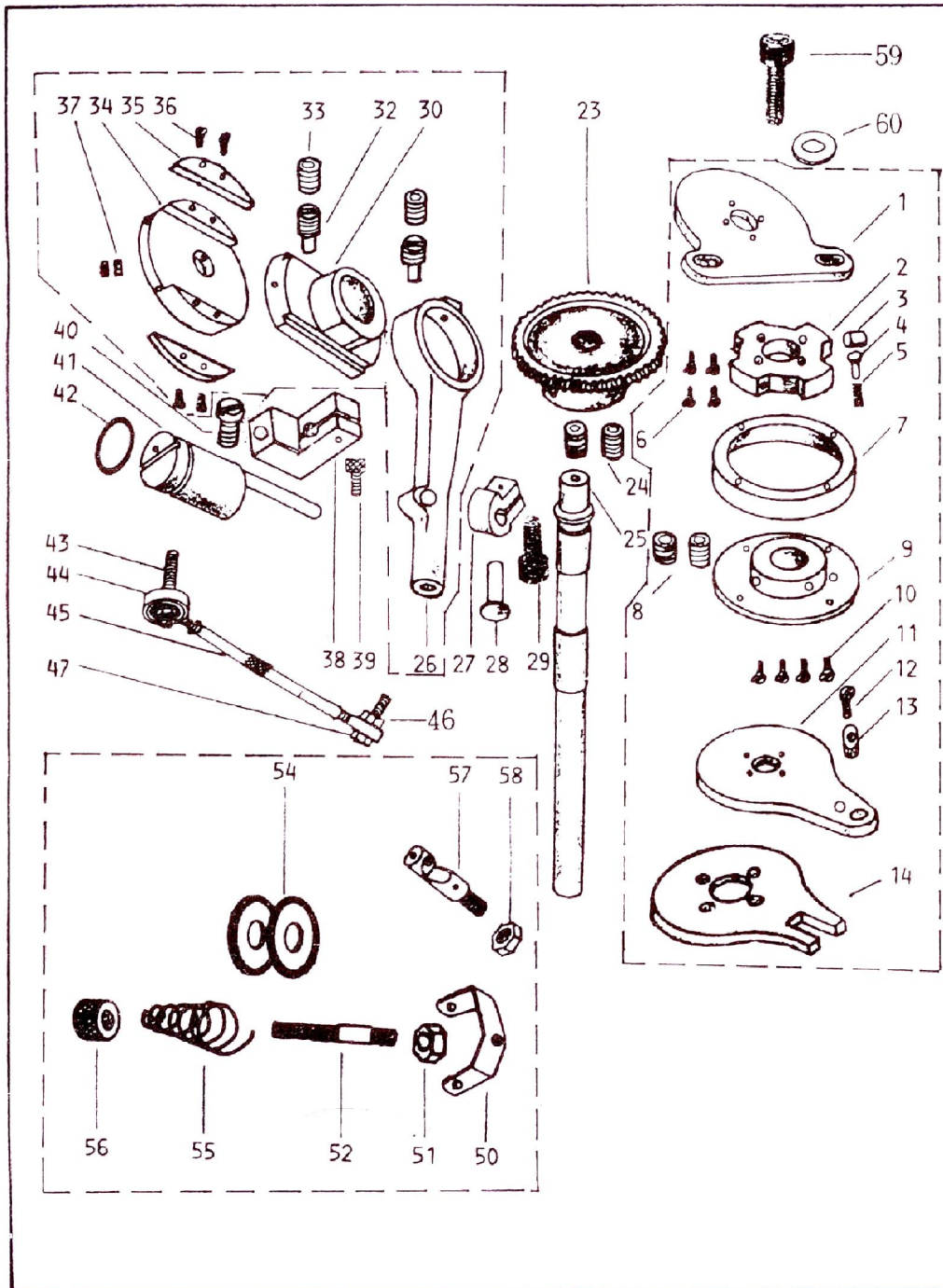
MEMO



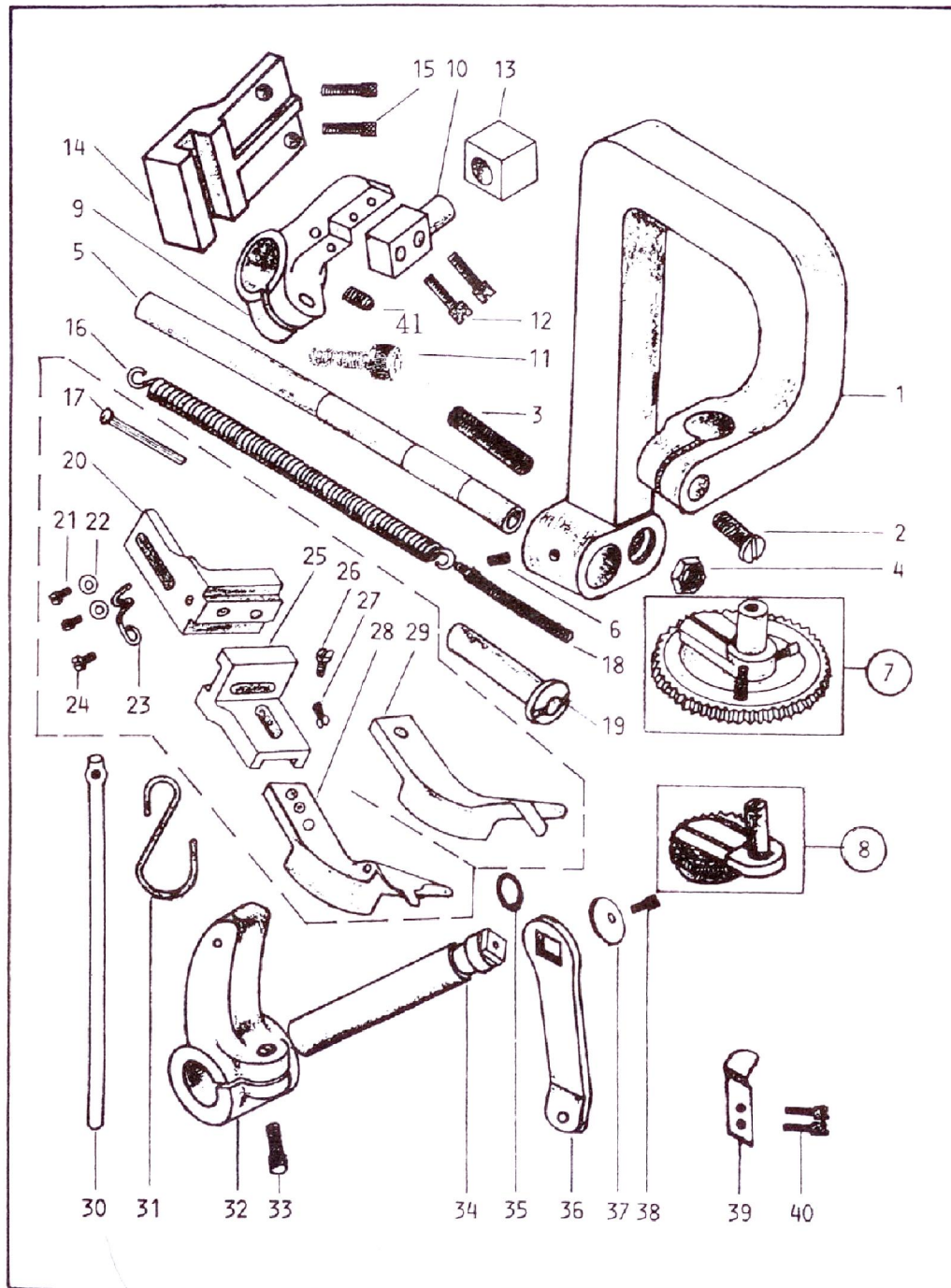
Ref. NO.	Parts. NO.	Description	CN600-10	CN600-20	CN600-30
1	6005	Main Shaft	1	1	1
2	6006	Stitch Regulating Stud	1	1	1
3	6007	Retaining Rings E3	1	1	1
4	6008	Nut 6×1	1	1	1
5	6009	Main shaft Set Screw	1	1	1
6	6010	Stitch Regulating Stud Nut	1	1	1
7	6011	Stitch Indicator	1	1	1
8	6012	Screw 1/8-44, L4	3	3	3
9	6013	Belt Wheel	1	1	1
10	6014	Belt Wheel Set screw 6×8	4	4	4
11	6015	Belt Wheel	1	1	1
13	6017	Spring	2	2	2
14	6018	Pin	2	2	2
15	6019	Big Connection Rod	1	1	1
16	6020	Big Eccentric	1	1	1
17	6021	Screw 6×8	2	2	2
18	6022	Helical Gear	1	1	1
19	6023	Rollar	1	1	1
20	6024	Screw 6×6	2	2	2
21	6025	Back Plate	1	1	1
22	6026	Screw 1/8×44, L7	3	3	3
23	6027	Needle Bar Tension Post	1	1	1
24	6028	Screw 5×16	1	1	1
25	6029	Washer	2	2	2
26	6030	Slide Block	1	1	1
27	6031	Retaining Rings E6	1	1	1
28	6032	Needle Bar Tension Seat	1	1	1
29	6033	Washer	2	2	2
30	6034	Screw 6×25	2	2	2
31	6035	Slide Block	1	1	1
32	6036	Loose Thread Block	1	1	1
33	6037	Screw 4×0.7, L9	1	1	1
34	6038	Loose Thread Seat	1	1	1
35	6039	Screw 4×10	1	1	1
36	6040	Needle Bar	1	1	1
37	6041	Needle Stop Plate	1	1	1
38	6042	Plunger	1	1	1
39	6043	Needle Clamp Body	1	1	1
40	6044	Needle Clamp	1	1	1
41	6045	Plate screw 3/32-56, L3.8	1	1	1
42	6046	Needle Bar Tension Plate	1	1	1
43	6047	Needle Clamp Screw 4×10	1	1	1
44	6048	Screw 3/32-56, L3	1	1	1
45	6049	Needle Bar Tension Spring	1	1	1
46	6050	Plunger Nut	1	1	1
47	6227	Plastic Washer	2	2	2



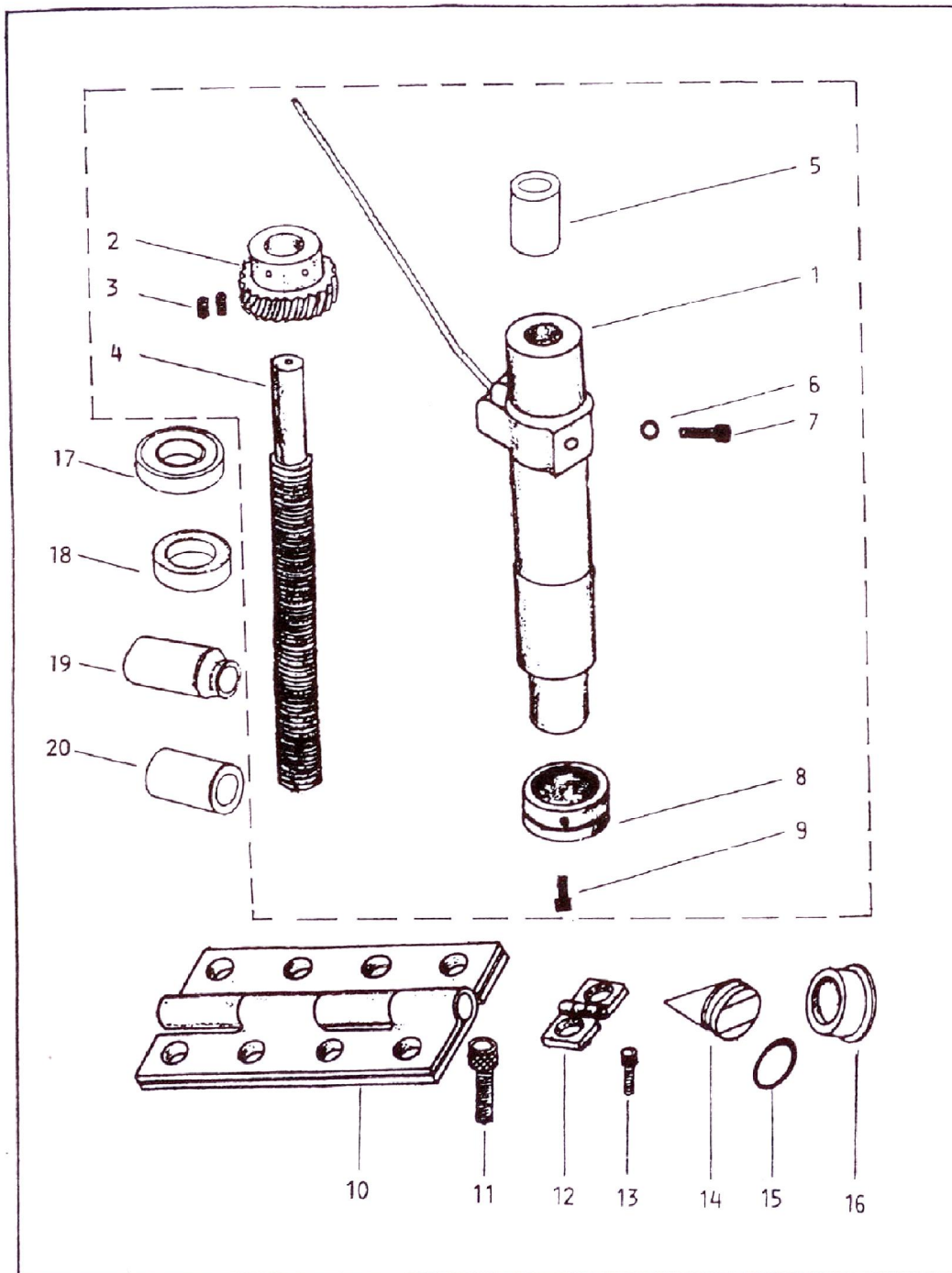
Ref. NO.	Parts. NO.	Description	CN600-10	CN600-20	CN600-30
1	6051	Looper Frame	1	1	1
2	6052	Looper Frame Rocker(Rear)	1	1	1
3	6053	Looper Rocker Bracket (R)	1	1	1
4	6054	Washer	4	4	4
5	6055	Screw 6×20	4	4	4
6	6056	Shims	2	2	2
8	6058	Washer	2	2	2
9	6059	Bearing	2	2	2
10	6060	Collar	3	3	3
11	6061	Screw 4×10	3	3	3
12	6062	Looper Frame Rocker(Front)	1	1	1
13	6063	Looper Rocker Bracket (F)	1	1	1
16	6066	Collar	1	1	1
17	6067	Screw 4×10	1	1	1
18	6068	Double Collar	1	1	1
19	6069	Screw 5×12	1	1	1
20	6070	Couple Shaft	1	1	1
21	6071	Small Connection	1	1	1
22	6072	Small Eccentric	1	1	1
23	6073	Screw 6×8	2	2	2
24	6074	Back Plate	1	1	1
25	6075	Screw 1/8-44, L7	3	3	3
30	6080	Looper Shaft	1	1	1
31	6081	Screw 4×0.7, L6.5	1	1	1
32	6082	Looper	1	1	1
33	6083	Lube Sleeve	1	1	1
34	6084	Plate	1	1	1
35	6085	Screw 1/8-44, L7	5	5	5
36	6086	Cam Assembly	1	1	1
37	6087	Screw Cam Assembly 6×14	2	2	2
38	6088	Roller Cam Assembly	1	1	1
39	6089	Ball Arm Assembly	1	1	1
MEMO					



Ref. NO.	Parts. NO.	Description	CN600-10	CN600-20	CN600-30
1	6090	Rear Plate	1	1	1
2	6091	Cam	3	3	3
3	6092	Roller	12	12	12
4	6093	Roller Pin	12	12	12
5	6094	Roller Spring	12	12	12
6	6095	Screw 1/8-44, L7	12	12	12
7	6096	Ring	3	3	3
8	6097	Set Screw 6×8	6	6	6
9	6098	Drum	3	3	3
10	6099	Set Screw 1/8-44, L7	12	12	12
11	6100	Plate	1	1	1
12	6101	Plate Set Screw 11/64-40	1	1	1
13	6102	Slide Block	1	1	1
14	6216	Plate	1	1	1
23	6112	Back Cup	1	1	1
24	6113	Set Screw 6×8	2	2	2
25	6114	Shaft Assembly	1	1	1
26	6115	Connection Rod	1	1	1
27	6116	Collar	1	1	1
28	6117	Pin	1	1	1
29	6118	Collar Screw 4×10	1	1	1
30	6119	Eccentric Wheel	1	1	1
32	6121	Stud Screw	2	2	2
33	6122	Screw 6×8	2	2	2
34	6123	Eccentric Wheel Table	1	1	1
35	6124	Pressure Block	2	2	2
36	6125	Screw 1/8-44, L7	4	4	4
37	6126	Screw 6×8	2	2	2
38	6127	Connection Block	1	1	1
39	6128	Screw 4×14	1	1	1
40	6129	Screw 15/64-28	1	1	1
41	6130	Eccentric Shaft	1	1	1
42	6131	Seal Ring P10	1	1	1
43	6132	Stud 3/16-32, 15/64-28,	2	2	2
44	6133	Connection Ring	2	2	2
45	6134	Connecing Rod	1	1	1
46	6135	Nut 3/16-32	2	2	2
47	6136	Nut 15/64-28	4	4	4
50	6139	Thread Tension Guide	1	1	1
51	6140	Nut 6×1	1	1	1
52	6141	Thread Tension Post	1	1	1
54	6143	Thread Tension Disc	2	2	2
55	6144	Thread Tension Spring	1	1	1
56	6145	Thread Tension Nut	1	1	1
57	6146	Thread Guide Stud	1	1	1
58	6147	Nut 3/16-32	1	1	1
59	6228	Screw 5×12	2	2	2
60	6229	Washer	2	2	2



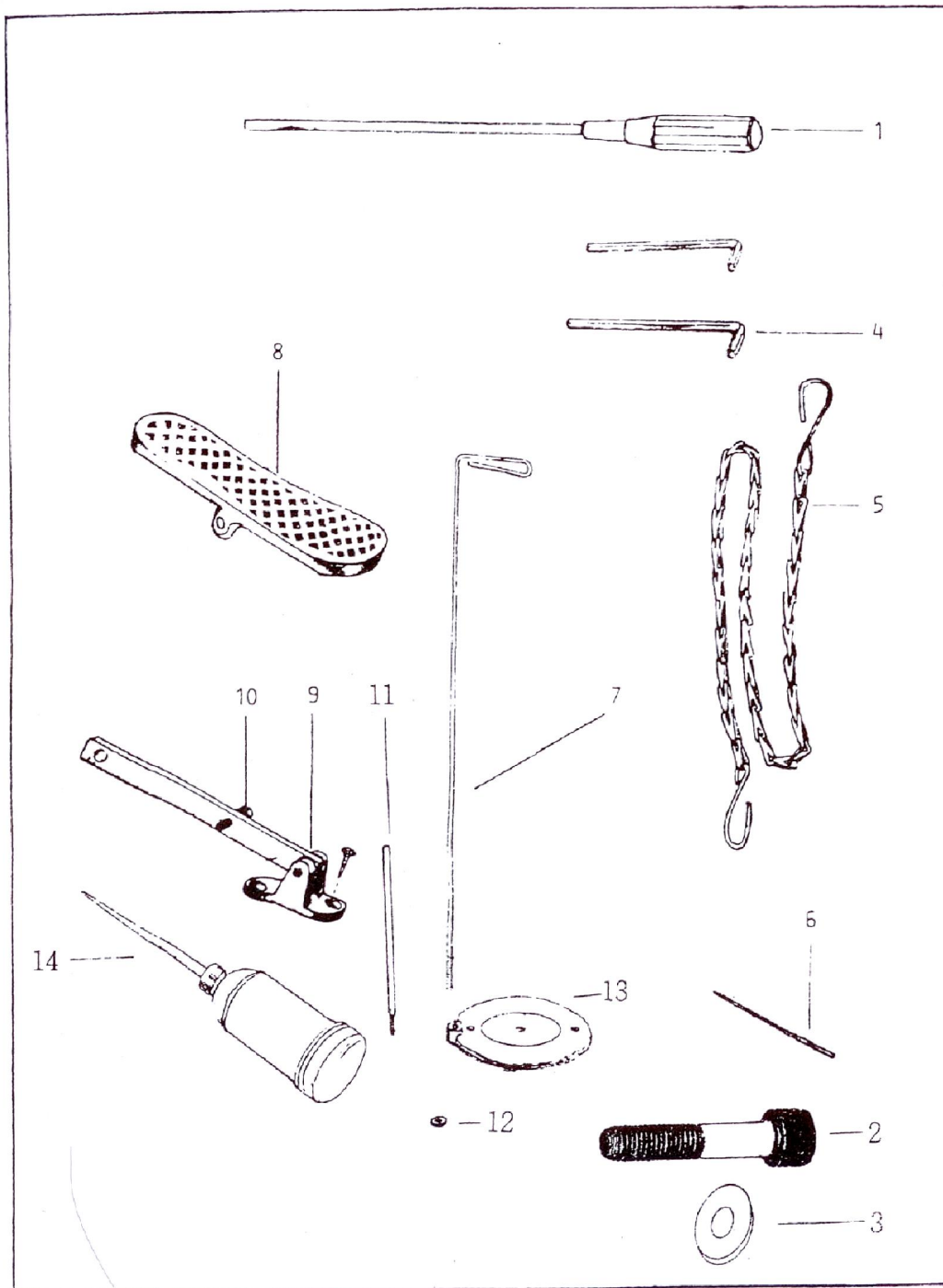
Ref. NO.	Parts. NO.	Description	CN600-10	CN600-20	CN600-30
1	6148	Feed Disc Arm	1	1	1
2	6149	Screw Disc Arm	1	1	1
3	6150	Stopper Disc Arm	1	1	1
4	6151	Nut Stopper Disc Arm	1	1	1
5	6152	Shaft Disc Arm	1	1	1
6	6153	Screw Shaft Disc Arm	1	1	1
7	6154	Big Front Disc Set	0	0	1
8	6155	Small Front Disc Set	1	1	0
9	6156	Pressure Lever	1	1	1
10	6157	Pressure Lever Shaft	1	1	1
11	6158	Screw 8×20	1	1	1
12	6159	Screw 3/16-32	2	2	2
13	6160	Silde Block	1	1	1
14	6161	Pressure Lever	1	1	1
15	6162	Screw 8×16	2	2	2
16	6163	ExTension Spring	1	1	1
17	6164	Pin	1	1	1
18	6165	Screw 6×1	1	1	1
19	6166	Tapped Rod	1	1	1
20	6167	Guard Connector	1	1	1
21	6168	Screw 5×16	2	2	2
22	6169	Washer	2	2	2
23	6170	Thread Tension Guard	0	0	1
24	6171	Screw 6/16-32	0	0	1
25	6172	Guide Connector	1	1	1
26	6173	Screw 3/16-32	1	1	1
27	6174	Screw 3/16-32	1	1	1
28	6175	Work Guide	0	0	1
29	6176	Work Guide	1	1	0
30	6177	Pull Rod	1	1	1
31	6178	Clasp	1	1	1
32	6179	Base Shaft Table	1	1	1
33	6180	Screw 8×25	1	1	1
34	6181	Base Shaft	1	1	1
35	6182	Seal Ring P14	1	1	1
36	6183	Base Shaft Block	1	1	1
37	6184	Washer	1	1	1
38	6185	Screw 5×10	1	1	1
39	6186	Upper Cover Flicr Plate	2	2	2
40	6187	Screw 11/64-32. L6	4	4	4
41	6230	Screw 6×8	1	1	1



Ref. NO.	Parts. NO.	Description	CN600-10	CN600-20	CN600-30
1	6190	Lubrication Pipe	1	1	1
2	6191	Gear	1	1	1
3	6192	Screw 6×6	2	2	2
4	6193	Worm	1	1	1
5	6194	Bush	1	1	1
6	6195	Sealed	1	1	1
7	6196	Screw 8×16	1	1	1
8	6197	Lube Sleeve And Net	1	1	1
9	6198	Screw 4×10	1	1	1
10	6199	Coupler	1	1	1
11	6200	Screw 8×12	8	8	8
12	6201	Coupler	2	2	2
13	6202	Screw 6×12	4	4	4
14	6203	Oil Mirror	1	1	1
15	6131	Seal Ring P14	1	1	1
16	6205	Rubber Stopper	2	2	2
17	6217	Oil Seal 32 7 15	2	2	2
18	6218	Oil Seal 28 7 18	1	1	1
19	6219	Needle Bar Bush (Front)	1	1	1
20	6220	Needle Bar Bush (Rear)	1	1	1

MEMO





Ref.NO.	Parts.NO.	Description	CN600-10	CN600-20	CN600-30
1	6206	Screw Driver	1	1	1
2	6231	Cap Screw 5/16-18. L2"	4	4	4
3	6232	Washer 5/16	8	8	8
4	6209	Wrench 3.4.5.6	4	4	4
5	6210	Chain	1	1	1
6	6211	Needle DB×1, 19-21	1	1	1
7	6212	Thread Stand	1	1	1
8	6213	<b>Treadle</b>	1	1	1
9	6214	<b>Treadle Lever</b>	1	1	1
10	6215	Chain Hook Screw 3/16	1	1	1
11	6233	Spool Pin	1	1	1
12	6234	Nut 6×1	1	1	1
13	6235	Spool Base	1	1	1
14	6236	Oiler	1	1	1

MEMO