



CMH1309 SERIES

Laser cutting machine

专注激光设备制造**18**年，畅销全球**100**多个国家

FOCUS ON LASER EQUIPMENT MANUFACTURING FOR 18 YEARS, SERVE GLOBAL CUSTOMERS IN MORE THAN 100 COUNTRIES

About us

GD HAN'S YUEMING LASER GROUP CO., LTD , a subsidiary of Shenzhen Han's Laser Technology Co., Ltd(stock code:002008), is a hi-tech enterprise which manufactures laser machines and focuses on Research & Development plus selling of industrial laser products. Located in Songshan Lake Hi-tech Industrial Development Zone, Han's Yueming Laser has developed steadily and benefits by the diverse IT and Hi-tech human resource in Guangzhou, Shenzhen, Hong Kong. Yueming has established modern factories in Dongguan, Shanghai Suzhou and Xuzhou with over 100 automated and high precision processing equipment, total floor area of 110,000 square meters and with more than 500 well trained workers, including 6 young optics experts, 33 researchers with master degree and 86 engineers with bachelor's degree.

Han's Yueming Laser sticks to its motto of 'win the market with advanced technology, reward customers with best service'. We believe in the enterprise spirit "Cooperation, Win-win, appreciation and sharing", and continuously attract top talents with sophisticated laser technique to join us. Han's Yueming Laser is the leading laser machine manufacturer in China, it has launched 10 series products and has reached 10,000 sets annual production capacity. With the integration of advanced laser technology, perfect quality management system and convenient after-sales service network in mainland China and globalmarket, Han's Yueming Laser enjoy the strengths of strong international competitiveness, it is your trustworthy partner for long term cooperation.



PRODUCT MODEL



CMH

1309

B

A

Version : A

Function : B for single head/T for double head

Working area : 1300*900

Series : CMH

About the product



CMH1309 series is a new upgraded product of Han's Yueming Laser. The design adopts the patented structure of Han's Yueming Laser, which is different from the traditional laser cutting machine with stable performance, new design and high compatibility.

The software system is independently developed by Han's Yueming, which can provide customers with more professional services of customization and upgrading.

Features

CMH1309 Laser cutting machine series:

- ◆ New design: Showing the brand advantage of Han's Yueming
- ◆ High-quality and imported motor, belt, lens and rail, make sure the machine stability.
- ◆ Frame-type machine structure: Ensure the machine runs smoothly
- ◆ High-quality laser source: Good laser spot and stable laser output
- ◆ Aluminum motion system independently developed by Han's Yueming with light weight, high rigidity and good dynamic performance
- ◆ Wide vision : Convenient to observe the internal processing of the machine

Working parameter

CMH1309-B-A

Working area	1300*900
Laser power	100 (options)
Transmission system	Inner rail
Cutting speed	0~500mm/s
Reposition accuracy	±0.1mm
Support format	PLT、AI、DXF、DST、DSB、BMP、JPG、PNG etc.
Working environment	Temp:5°C-40°C; Humidity:5%-80%; non-condensing
Total power	<1.25
Power supply	220V/50Hz
Weight(body)	380KG
Dimension	1900*1700*1100

CMH1309-T-A

Working area	1200*900
Laser power	100 (options)
Transmission system	Inner rail
Cutting speed	0~500mm/s
Reposition accuracy	±0.1mm
Support format	PLT、AI、DXF、DST、DSB、BMP、JPG、PNG etc.
Working environment	Temp:5°C-40°C; Humidity:5%-80%; non-condensing
Total power	<2.05
Power supply	220V/50Hz
Weight(body)	380KG
Dimension	1900*1700*1100

Configuration

	No.	Item	Config.	Specation	Matching items	备注
Main part	1	Laser tube	●	100W		China
	2	RF metal tube	○	30~100W		Import
	3	Lens	●	Φ25mm×3mm		China/Import
	4	Mirror	●	Φ20mm , f=63.5mm		China/Import
	5	Cover opening protection	○			
	6	Working table	○	Honeycomb/ blade stripes		
	7	Rail	●	Inner rail		Han' s Yueming
	8	Controller	●	5#		Han' s Yueming
	9	Software	●	Smart Carve		Han' s Yueming
Auxiliary	10	Socket for auxiliary	●			Han' s Yueming
	11	Chiller	○			
	12	Blower	○	750W		China
	13	Air pump	○	135W		China

● : Standard ○ : Optional ▲ : Matching items

Configuration

No.	Items	Description	Remark
1	Laser tube	single/double head 60~180W	
2	RF metal tube	single/double head 30~100W	
3	Lifting system	Electric lifting working table	
4	Projection	High definition / Fully high definition	
5	Top vision	Top visual positioning	
6	Small vision	Small visual positioning	
7	Electric head	Electric head	Only for double head
8	Rotary device	Rotary device	Used with lifting machine
9	Auto focus	Physical auto focus	Used with lifting machine
10	Coaxial red light	Coaxial red light	
11	Synchronous blowing	Blowing as processing, not blowing as not processing	

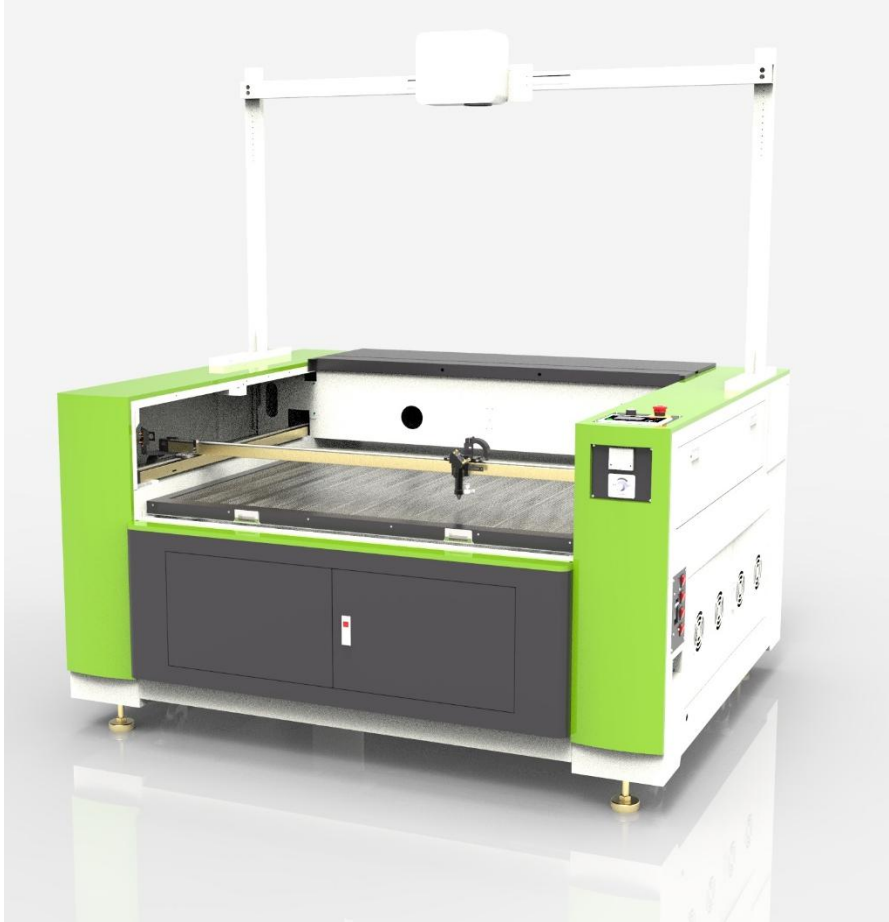
Lifting function



Only for reference

Lifting instructions: the lifting components are independent modules, which can be directly installed on the machine (only need to remove the collection box)

Projection



Features :

By projection position, the material can be accurately placed in the position and cut, it can ensure the cutting accuracy

HD projector : Resolution (1280*800)

Fully HD projector : Resolution (1920*1080)

Top vision

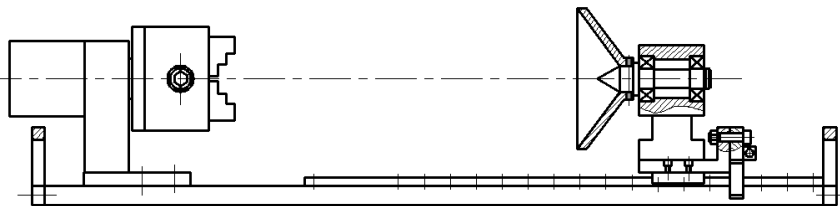


Function :

The top camera can solve the problem of inaccurate cutting caused by the deformation of printed fabric patterns.

It is also with automatic extraction function which can extract the entire outline of the pattern at one time.

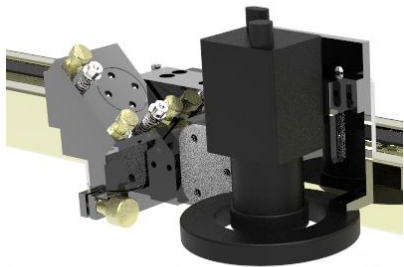
Rotary device



Feature :

Installed above the lifting table, cylindrical objects can be clamped by a three-jaw chuck for engraving and cutting

Small vision



Feature :

The powerful visual function is developed independently, which can realize visual matching position and visual contouring.

Application

Material

It is mainly used for rapid engraving and cutting of materials with good absorption of CO2 laser, such as acrylic sheet, fabrics, leather, plastic, wood board and other non-metallic materials.



Craft cutting



Toys cutting

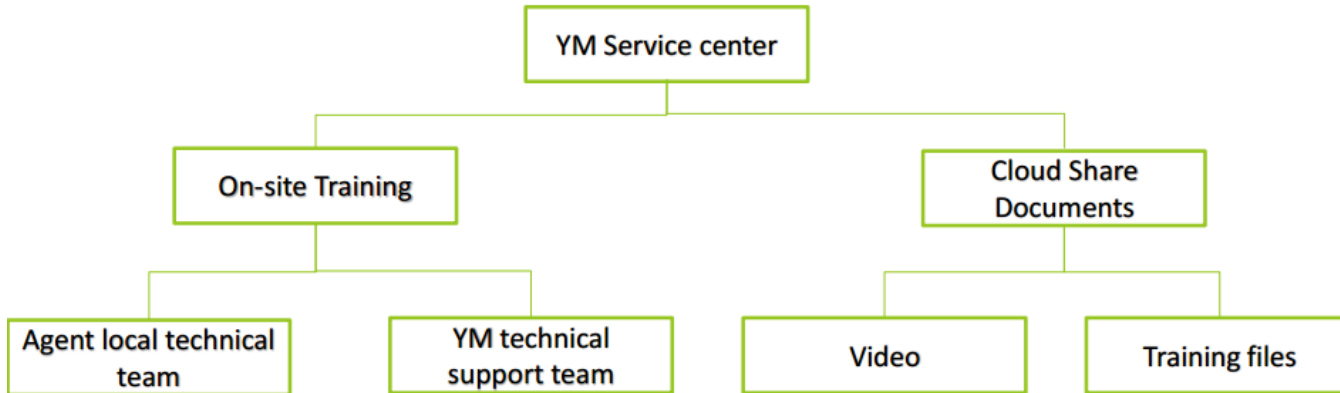
Service

Technical strength: demand research, technical Seminar, laser application testing and samplings service;

Technicians support: 168 domestic technicians, 22 oversea technicians, 5 online engineers, 8:30am~22:30pm online support;

Nearest service: 50 sales & service domestic offices, and 38 oversea agents;

Free Training: 5 days in factory free training (accommodation and food free)



Cooperation Win-win Appreciation Sharing

广东大族粤铭激光集团股份有限公司
GD HAN'S YUEMING LASER GROUP CO., LTD.

总部地址：广东省东莞市松山湖高新技术产业开发区工业东路28号

电话：0769-89838888 89839999 (90线)

传真：0769-89833333

邮箱：yueming@ymlaser.com

网站：www.ymlaser.com