



Laser Cutting Machine with large scale
camera visual system (CMA1309-V-B)

Introduction Book

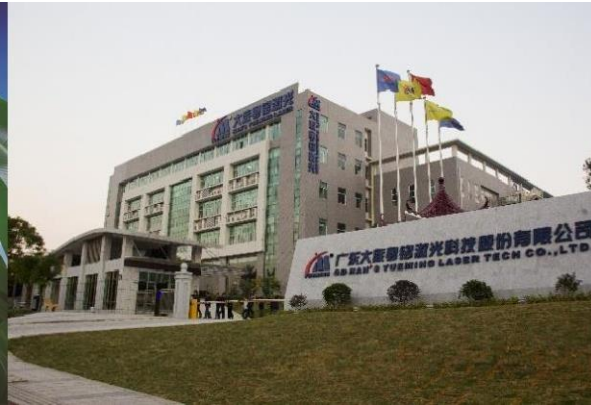
Company profile

GD HAN'S YUEMING LASER GROUP CO., LTD , a subsidiary of Shenzhen Han's Laser Technology Co., Ltd(abbreviated as : Han's laser, stock code:002008), is a hi-tech enterprise which manufactures laser machines and focuses on Research & Development plus selling of industrial laser products ; and has established modern R&D and factories in Dongguan, Shanghai and Jiangsu with total floor area of 100,000 square meters.

GD HAN'S YUEMING LASER GROUP CO., LTD , is a national key hi-tech enterprise, an ISO9000,CE and FDA certified company , also an famous brand and well-known trademark in Guangdong province , and has established more than 40 sales and service institution in domestic and more than 100 countries.



Shanghai research institute




Songshan lake R&D and production base



Jiangsu production base

Company certification

Certificate of Registration



This is to certify that the quality management system of

GD Han's Yueming Laser Technology Co., Ltd.

No. 28, East Industrial Road, Songshan Lake High-Tech Industrial Development Zone, Dongguan City, Guangdong Province, P. R. China



has been assessed and registered by Intertek as conforming to the requirements of

ISO 9001: 2008

The quality management system is applicable to:

Design, production and sales of laser equipment laser power up to 1kW (laser cutting machine, laser engraving machine, laser marking machine).

Organization Code: 68248938-3
 Certificate Number: 0509069
 Original Issue Date: 01 December 2005
 Certificate Issue Date: 11 December 2014
 Certificate Expiry Date: 09 January 2018

Attestation of Conformity

No. MBA 14 10 86257 003



Holder of Certificate: **GD HAN'S YUEMING LASER TECHNOLOGY CO., LTD**
 No 28 East Industrial Road
 Songshan Lake High-Tech Industrial Development Zone
 523000 Dongguan, Guangdong
 PEOPLE'S REPUBLIC OF CHINA

Product: **Laser cutting machine**

Model(s): **CMA1610-FET-CAN, CMA1810-FET-CAN, CMA2010-FET-CAN**

Parameters: Rated input: 320 240VAC, 50/60Hz; P-H-PE
 Rated power: 2400W

Tested according to: EN ISO 11553-1:2006
 EN 60204-1A1:2006
 EN 60205-1:2007

The Attestation of Conformity is issued on a voluntary basis according to Council Directive 2006/42/EC relating to machinery. It confirms that the tested equipment (not Annex IV equipment) complies with the principal protection requirements of the directive. It refers only to the sample submitted to TÜV SÜD Product Service GmbH for testing and certification. See also notes covered.

Test report no.: 049041304002

Valid until: 2018-10-10

Date: 2014-10-13 (Wei Zheng)



CE After preparation of the necessary technical documentation as well as the EC declaration of conformity the required CE marking can be affixed on the product. Other relevant directives have to be observed.

Page 1 of 1

TÜV SÜD Product Service GmbH · Zertifizierungsstelle · Riefenstraße 65 · 80333 München · Germany

国家火炬计划重点高新技术企业证书

经评选, **广东大族粤铭激光科技股份有限公司**

为国家火炬计划重点高新技术企业

批准文号: 国科火字〔2013〕258号

No.022013400005




VERIFICATION OF MD & LVD COMPLIANCE

OMA Testing Certification

Certificate No. OMA/09128821

Applicant: DONGSHAN HAN'S YUEMING LASER TECHNOLOGY CO., LTD.

Address of Applicant: NO.168, YANWU INDUSTRIAL PARK, LUGUOWU ROAD, WANGZANG DISTRICT, DONGGUAN CITY, GUANGDONG PROVINCE, CHINA

Product Description: LASER CUTTING, ENGRAVING, AND MARKING MACHINE

Type and Model: CMA SERIES, PN SERIES, YAG SERIES, FILM SERIES, YMRE SERIES, SM SERIES

Technical Construction File Reference No./Rev: CE091278569 1

Codes/Standards Applied: EN ISO 12100-1:2009; EN ISO 12100-2:2009
 EN 60204-1:2006; EN 60205-1:2007
 EN 60205-1:1994; EN 60205-4:2006

Date of Issuance: Dec.30, 2009

Remarks: This Certificate is Only Valid For The Equipment And Configuration Described, And In Conformity With The Test Data Detailed Above.

Conclusion of Assessment: We Hereby Confirm That The Technical Construction File And Manufacturing, Installation And Testing Processes For Above-Mentioned Equipment Comply With The Essential Safety Requirements Of EU Machinery Directive 2006/42/EC & 2006/95/EC Low Voltage Directive Applied Codes And Standards.

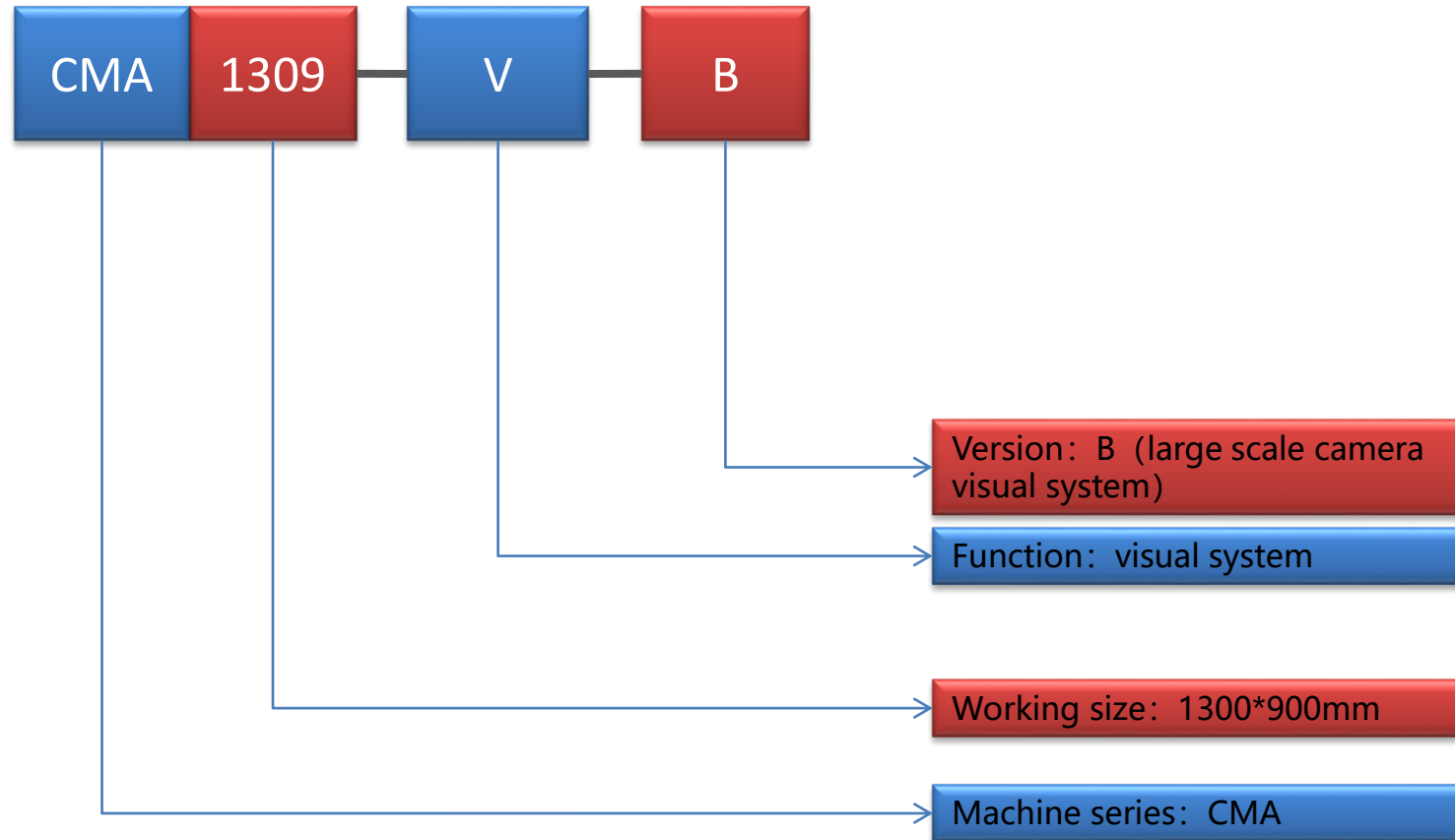
Chief Assessor: 

OMA Certification & Testing Service LTD

OMA Certification & Testing Service LTD
 75 New Bond Street, London, W1S 1RF
 info@omacert.org




Machine model



Note:

1. This function is compatible to CMA1810-V-B, CMA1610-V-B, CMA1610-FV-E, CMA1810-FV-E
2. Large scale camera visual system is only compatible to single cutting head or asynchronous double cutting heads

Brief Introduction

- Professional visual system software
- Easy and convenient operating interface
- High quality digital CCD camera
- Professional suction system, to keep material attached to worktable flat, and exhaust smoke and dust out
- High quality electrical parts



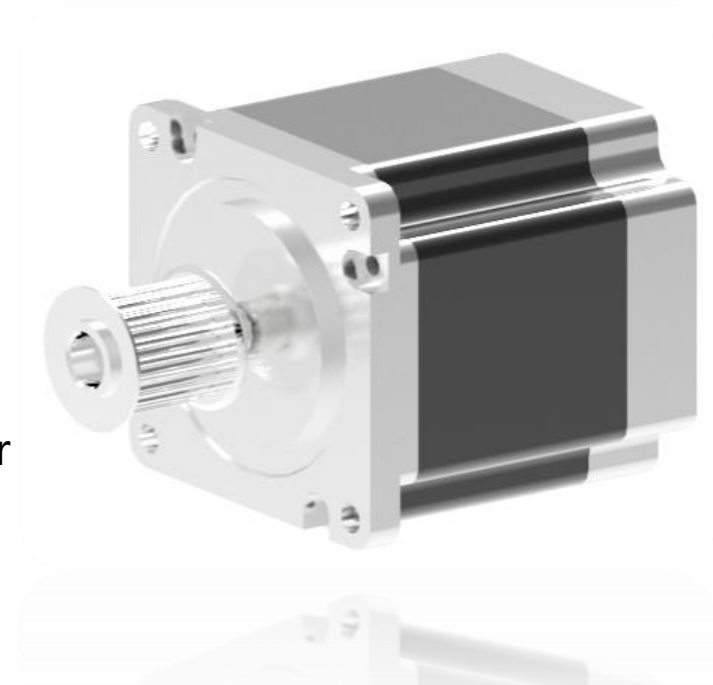
CMA1309-V-B appearance (just for the reference)

Specification



YM self-developed transmission system, high accuracy, high stability

Imported Japan step motor



Specification

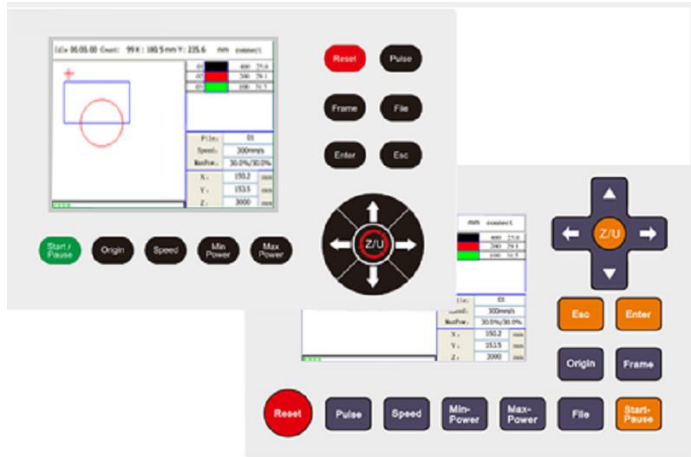
Digital Single Lens Reflex



Computer+isolated console (optional)



Large scale camera visual system



Just for the reference

Feature:

1. With the function of picture processing, image recognition, template matching and positioning, contour catching and so on;
2. Much more efficient than small scale camera visual system;
3. Support dynamic tracking the working path, coordinate, production status in time.
4. Allow the operator to revise the parameter of each layer on the interface directly (such as speed, power), and save the revision automatically.
5. Self-developed software with updated version regularly.

Working area(mm)	900*600	1500*800	1800*1000
Cutting accuracy(mm)	0.5	0.8~1	1~1.5

Parameter

Machine Model	CMA1309-V-B
Working area	1300*900mm
Laser type	CO ₂ glass tube
Laser power	80W、100W、130W
Max speed	30m/min
Working file	AI、DXF、BMP、PLT、DST、DWG etc.
Working environment	Temp: 5°C-40°C Humidity: 5%-80%, non-condensation
Gross power	<2000W (without accessory)
Power supply	Single phrase 220~240V, 50/60Hz
Gross weight	720Kg
Oversize dimension	1910*1710*1370mm (without full cover)

Specification

	Item	Spec.	Model	Qty	Note
Mainbody	Laser Tube	○	80w	1	CO ₂ glass tube
		●	100W		CO ₂ glass tube
		○	130W		CO ₂ glass tube
	Mirror	▲	Φ25mm×3mm Mo	3	For tube under 100W
		▲	Φ25mm×3mm Si		For tube over 100W
	Lens	○	Φ20mm,f=50mm	1	
		●	Φ20mm,f=63.5mm		
		○	Φ20mm,f=75mm		
	Motor	●	Y09-59D3-7360	1	
		●	Y09-59D3-8536	1	
worktable	●	Honeycomb table	1		
	○	Slat table			
Foot pedal	△		1		
Mainboard	●	Large scale camera visual system	1		
Accessory	Cooling system	●	CW	1	
		○	544*425*295		
	Air pump	●	220V/60Hz/135W	1	ACO-009D
	Blower	●	220V/60Hz/750W	2	
	Computer	○	Micro computer	1	
		○	Monitor	1	
Isolated console	○		1		

- standard spec.
- optional spec.
- △ to choose
- ▲ working with other configurations

Application



samples

合作、共赢、感恩、分享

Cooperation, Win-win, Appreciation, Sharing

总部地址：广东省东莞市松山湖高新技术产业开发区工业东路28号

电话：0769-89838888、89839999(90线)

传真：0769-89833333

邮箱：yueming@ymlaser.com