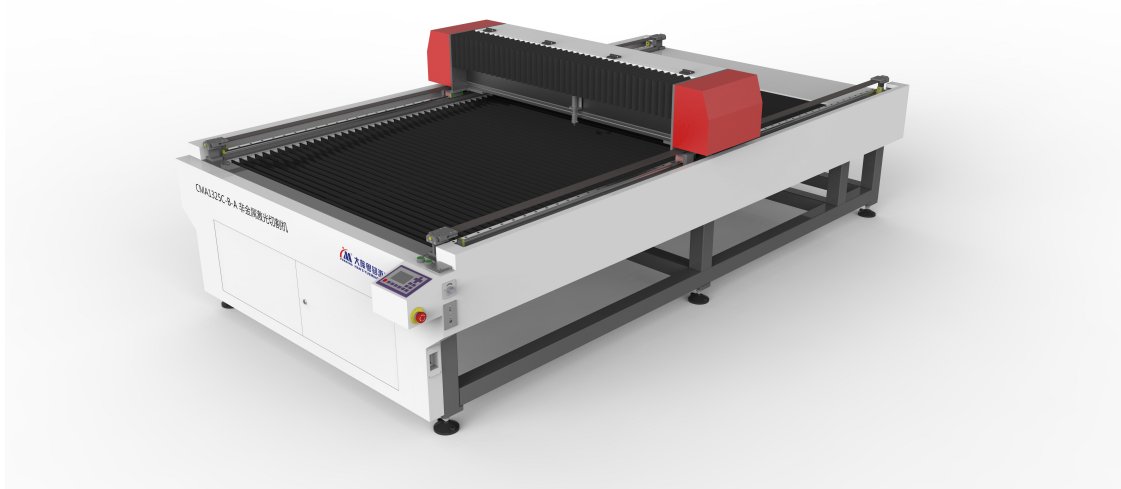


CMA1325C-B-A Flatbed Laser Cutting Machine



Machine Introduction

CMA1325C-B-A large format laser cutting machine designed by GD Han's Yueming laser technology Co., Ltd mainly focuses on non-metal materials cutting. It enjoys high stability and precision and widely used in sign industry.

Features :

- Machine body is made of reinforced welding lathe bed, which is gone through tempering treatment and vibration aging to get rid of the stress and then under finishing milling to get high stability and to keep the deformation tolerance within $\pm 0.02\text{mm}$.
- High strength aluminum alloy is adopted for the beam structure to ensure faster and smoother running.
- High dynamic stepping motor and high precision linear guide rail are adopted to achieve fast response and stable performance.
- Support MDF , acrylics and the other materials cutting.
- Maximum acrylics cutting thickness reaches 30mm;

Specification :

| | |
|-----------------------|--|
| Model | CMA1325C-B-A |
| Maximum material size | 1325mm×2500mm |
| Laser power | 130W |
| Maximum speed | 25m/min |
| Accuracy | ±0.1mm/100mm |
| Repeated accuracy | ±0.05mm/100mm |
| Cooling method | Water cooling |
| Drawing format | bmp,plt,dxf,ai,etc. |
| Work environment | Temperature 5-40°C Humidity≤ 95% , No condensation |
| Gross power | <4KW |
| Supply voltage | 220V/50Hz-60Hz |
| Machine weight | 600KG |
| Dimension | 3480mmx1900mmx1150mm |

Applicable industries

It is suitable for the high-end professional users to do large format material cutting in furniture, packaging, printing, advertisement, decoration, construction industries etc.

Applicable Material

Non-metal materials such as acrylics, wood, MDF.