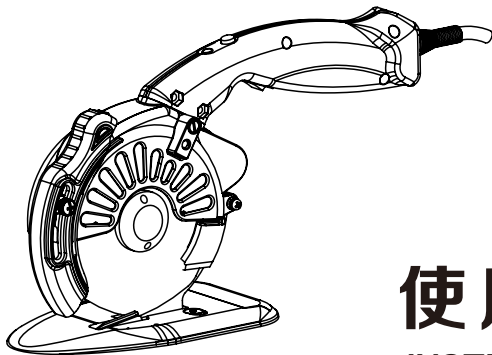


直驱圆刀裁剪机

DIRECT DRIVE SERVO CUTTING MACHINE

RCS-1001/1002/1101/1002/1251/1052

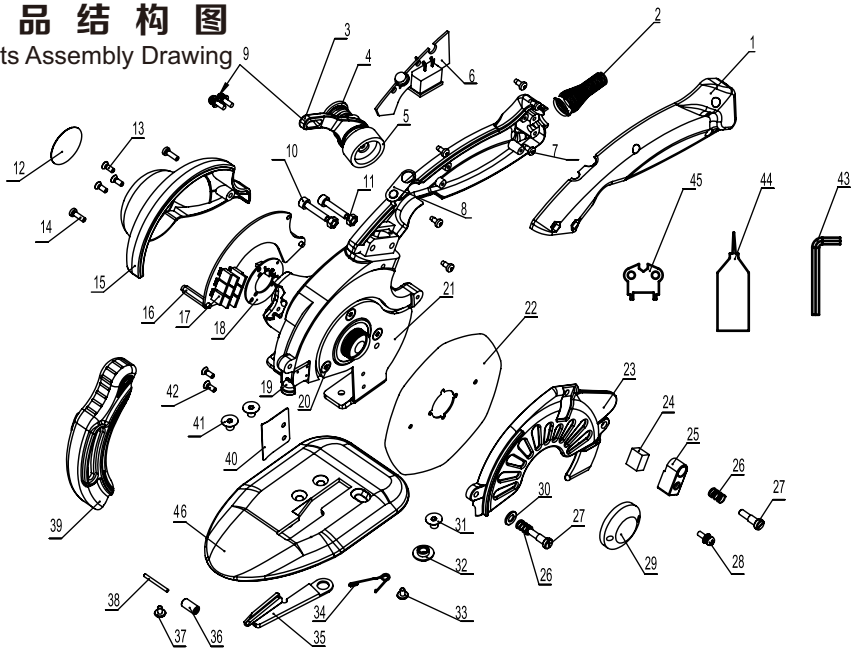


使用说明书

INSTRUCTION MANUAL

产品结构图

Parts Assembly Drawing



序号 NO.	零件名称Parts Name	序号 NO.	零件名称Parts Name	序号 NO.	零件名称Parts Name
1	手柄Drive Handle	17	主板Main Control Panel	32	二阶螺母Two Steps Nut
2	手柄电源线护簧Spring	18	霍尔板Hall Panel	33	台阶螺钉M3*6 Step Screw
3	磨刀器架Shapener Frame	19	LED照明灯LED Light	34	下刀弹簧Under Knife Spring
4	磨刀器组件Shapener Component	20	螺钉M4*8Sunk Screw	35	下刀Under Knife
5	砂轮Grinding Wheel	21	支架板Standard	36	冶金滚子Roller
6	手柄板Handle Panel	22	刀片(八角)Knife	37	螺钉M3*5Screw
7	螺钉M3*8M3*8 Screw	23	护罩Shield	38	滚子轴Roller Shaft
8	开关标签Switch Lable	24	油毛毡Oil Felt	39	护刀器Knife Guard
9	组合螺钉M4*12Combination Screw	25	储油器Knife Oiler	40	分布片Separator
10	内六角螺钉4*20Inner Hexagon Screw	26	压力弹簧Pressure Spring	41	螺钉M3*3*4 Sunk Screw
11	螺母M4 Nut	27	储油螺钉Screw for Oiler	42	内六角螺钉M5*6Inner Hexagon Screw
12	滴塑商标Φ2.8CM Lable	28	组合螺钉M3*10Combination Screw	43	M3内六角扳手Inner Hexagon Wrench
13	螺钉M3*5*4Sunk Screw	29	刀片压盘Blade Pressure Plate	44	配件油壶Oiler
14	螺钉M3*8*4Sunk Screw	30	平垫Flat Washer	45	蝶形扳手Butterfly Wrench
15	后罩Cover	31	内六角螺钉M5*7Inner Hexagon Screw	46	底板Chassis
16	六角螺钉隔离柱M3*25/26/27Hexagon Screw Insulate Column				

产品简介Product Brief Introduction

本产品采用微型大扭矩伺服电机直接驱动刀片，无齿轮等传动机构，具有节能、环保、安全、轻便、耐用等优点，为国际行业首创，具有完全自主知识产权。

This product uses the micro large torque servo motor to drive the blade directly, it does not have the deceleration transmission mechanism, it has energy saving, environmental protection, safety, light, durable and so on advantages, It is a pioneer in the international industry and has completely independent intellectual property rights.

本产品执行T/ZZB 0788-2018《直驱圆刀裁剪机》标准要求，符合EMC/LVD/MD认证要求。

This product implements the standard requirements of T/ZZB 0788-2018 "Direct Drive Round Cutter Cutting Machine", and meets the requirements of EMC/LVD/MD certification

★开箱请先核对装箱清单Please check the packing list before unpacking

装箱清单Packing List

No.	名称Description	Quantity	No.	名称Description	Quantity
1	直驱圆刀裁剪机Servo Cutting Machine	1SET	5	M3内六角扳手Internal Hexagon Wrench	1PC
2	砂轮Grinding wheel	1PC	6	砂纸Sandpaper	1PC
3	配件油壶Oiler	1PC	7	合格证Certificate of approval	1PC
4	蝶形扳手Butterfly wrench	1PC	8	说明书Instructions	1PC

参数表Parameter List

Model	Blade Size	Cut Thickness	Voltage	Power	Speed	Noise
RCS-1001	100mm	27mm	110V	3.6W-200W	800/950/1100/1250/1400RPM Adjustable-Speed	<55dB
RCS-1002			220V			
RCS-1101	110mm	32mm	110V	3.6W-250W		
RCS-1102			220V			
RCS-1251	125mm	40mm	110V	3.6W-300W		
RCS-1252			220V			

使用说明Instructions

一、启动/关闭修剪机：电源开关位于手柄处下方，打开至“**I**”，关闭至“**O**”，打开时修剪机刀片运转，刀片锋利，请注意安全。电源开关见图1

Step 1: Start/close the clipper. The power switch is located below the handle. Open it to "I" and close it to "O". When open, the blade of the cutting machine runs. The blade is sharp. Please pay attention to safety. The power switch is shown in photo 1.

二、转速调节：点动手柄上方多功能按键，转速800-1400RPM循环切换。多功能按键见图1

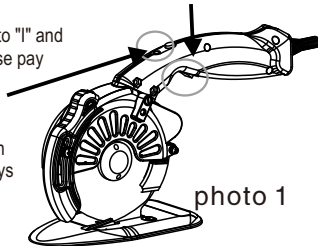
Step 2: Speed regulation. The multi-function key above the finger-operated handle can adjust the speed. The speed is 800-1400RPM four levels. and the speed Multifunctional keys are shown in photo 1.

三、开启/关闭LED照明灯：长按多功能按键3秒开启LED照明灯，再长按3秒关闭LED照明灯。

Step 3: Turn on/off the LED lights. Press multi-function button for 3 seconds to turn on the LED lamp, and press for 3 seconds to turn off the LED lamp in photo 1.

四、裁剪：先让电源处于关闭状态,拉开护刀器至合适的位置,启动裁剪刀,调至合适的转速,裁剪作业。裁剪时，身体部位离开刀片，以免损伤。

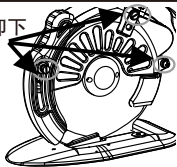
Step 4: Cutting. First let the power supply in the closed state, pull the knife protector to the appropriate position, start the cutting knife, adjust to the appropriate speed, cutting operation. When cutting, the body part should be removed from the blade so as not to be damaged.



刀片与砂轮更换指南Guide for replacement of blades and grinding wheels

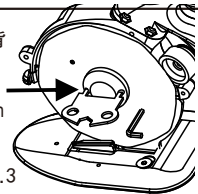
★更换刀片Replace blade

第一步：拆下护罩上的3颗螺钉，卸下护罩。(图2)Step1: Remove the three bolts on the shield and remove the shield. (as photo No.2)



No.2

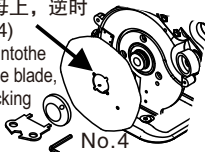
第二步：将刀片上的定位孔与背垫位置的定位孔对齐。(图3)
Step 2: Align the positioning holes on the blade with the positioning holes on the back cushion.(as photo No.3)



No.3

第三步: 将内六角扳手插入到刀刃和机架板孔上, 锁住刀片, 然后将蝶形扳手插入到锁紧螺母上, 逆时针旋转松开螺母, 拆下旧刀片。(图4)

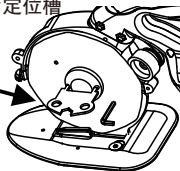
Step 3: Insert the inner hexagonal wrench into the blade and the hole of the rack plate, lock the blade, then insert the butterfly wrench into the locking nut, loosen the nut counterclockwise, and remove the old blade.(as photo No.4)



No.4

第四步: 安装新刀片, 请注意刀片定位槽与刀片定位梢吻合。如图5所示。

Step 4: Install a new blade. Please note that the blade positioning groove matches the blade positioning tip. (as photo No.5)

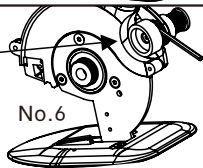


No.5

★更换砂轮: ★Replace grinding wheel

用手握住砂轮外圆, 将插销插入到轴上的定位孔中, 锁住轴轮, 然后按箭头所示的方向旋转, 拆下旧砂轮换新的砂轮。(图6)

Hold the wheel's outer circle with your hand, insert the bolt into the positioning hole on the shaft, lock the wheel, then rotate in the direction indicated by the arrow, remove the old wheel and replace it with a new one.(as photo No.6)



No.6

检查与维护 Inspection and maintenance

★注油: 为了确保机器最佳的性能和寿命, 请始终保持润滑油壶内处于有油状态, 约30-40小时注油一次。

★Oil injection: In order to ensure the best performance and life of the machine, please always keep the lubricating oil pot in an oily state, about 30-40 hours oil injection once.

★磨刀: 请确保刀片锋利。启动裁剪机, 使刀片处于最低转速运行。用手指轻侧压磨刀砂轮帽, 让砂轮与刀片轻微接触, 使砂轮与刀片同步旋转, 直至刀口锋利, 即完成磨刀。

★Grinding knife: Make sure the blade is sharp. Start the cutting machine to make the blade run at the lowest speed. The grinding wheel cap of the cutter is grinded by finger light side pressing, so that the grinding wheel and the blade touch slightly, the grinding wheel and the blade rotate synchronously until the edge of the cutter is sharp, the grinding tool is finished.

★清洁砂轮油污: 当砂轮磨刀接触面沉积较多油污影响磨刀功能时, 需及时清洁砂轮上的油污, 取下砂轮利用砂纸打磨清洁, 砂轮拆装方法请参考本手册。

★Clean grinding wheel oil pollution: When more oil pollution deposits on the contact surface of grinding wheel grinding tool affects the function of grinding tool, it is necessary to clean the oil pollution on the grinding wheel in time, remove the grinding wheel and use grinding paper to clean it. Dismantling and assembling method of grinding wheel, Please refer to this manual.

★检查安装螺钉:为了确保裁剪机最佳的性能和运行安全性,需经常检查安装螺钉是否紧固妥善。若发现螺钉松了,应立即重新拧紧,否则会导致严重事故,确保裁剪机清洁干燥。

★ Inspection of installation screw: In order to ensure the best performance and operation safety of the cutting machine, it is necessary to check whether the installation screw is tightened properly. If the screw is loose, it should be tightened again immediately. Otherwise, it will lead to serious accidents and ensure that the cutting machine is clean and dry.

安全预防措施 Safety precautions

◆工作场所应保持干净整洁,无杂物。Workplaces should be kept clean and tidy, No sundries.

◆工作场所环境温度应为 -10°C — 45°C ,相对湿度 $\leq 85\%$ 。

Workplace ambient temperature should be -10°C - 45°C , and relative humidity should be less than 85%.

◆刀片锋利,严禁身体部位接触刀片,请在通电后谨慎使用,并禁止儿童靠近。

The blade is sharp. It is strictly forbidden to touch the body. Please use it carefully after the power is turned on, and children are forbidden to approach.

◆在机器没有工作时,要使护刀器处于最低的位置。When the machine is not working, the cutter protector should be kept in the lowest position.

◆使用产品之前请目视检查,确保安全装置正常,安装螺丝和刀片安全。Before using the product, please inspect it visually to ensure the safety device is normal and the installation of screw and blade is safe.

◆如裁剪阻力大、不顺畅,不得使劲用力推压,需检查刀片是否锋利以及被裁剪物是否过厚过硬。

If the cutting resistance is large and the cutting is not smooth, the cutting force should not be pushed hard. It is necessary to check whether the blade is sharp and whether the cutting material is too thick or too hard.

◆维修前请确保拆下电池切断电源,红色电源指示灯熄灭。

Before maintenance, please make sure that the power supply is cut off, and the red power indicator is off.

◆除了常规维修,更换刀片和砂轮外,其他任何部件请勿随意更换。

In addition to routine maintenance, replacement of blades and grinding wheels, do not replace any other parts at will.

◆接上地线,以保安全。Connect the ground wire to ensure safety.

注意事项:本公司产品随时都在进行改进以适应最新的技术进步。因此,有些部件可能未预先通知而进行改进。为求改进,本手册所载规格可能不预先通告而径予更改。

Notes: The company's products are being improved at any time to adapt to the latest technological progress. Therefore, some parts may be improved without prior notice. For improvement, the specifications contained in this manual may not be changed without prior notice.

保修卡 Guarantee Card

用户地址User's address	
产品型号Model	
销售单位Sales Company	
产品序列号Series No.	
销售单位Sales Company	
故障说明Fault description	
生产日期Date of manufacture	
购买日期Date of purchase	

质量服务承诺 Quality Service Commitment

本产品自出厂之日起，使用单位在正常使用无人为损坏情况下，两年内免费维修。客户在产品使用过程中如有服务需求，可通过电话、函件等现代通讯方式告知制造企业，制造企业在24小时内作出处理回复。

未经授权的维修、改装或更换将不受工厂保修的服务。

This product will be repaired free of charge within two years when it is in normal use and no man-made damage occurs from the date of leaving the factory. Customers can inform the manufacturer by telephone, letter and other modern communication if they have service needs in the process of using the product, and the manufacturer can make processing reply within 24 hours.

Unauthorized maintenance, modification or replacement of services that will not be subject to factory warranty