



意大利威比玛 牛仔智造专家  
ITALY VI.BE.MAC. JEANS SMART SOLUTION

# 零件手册

PARTS MANUAL

## S2250

可编程双针缝纫机

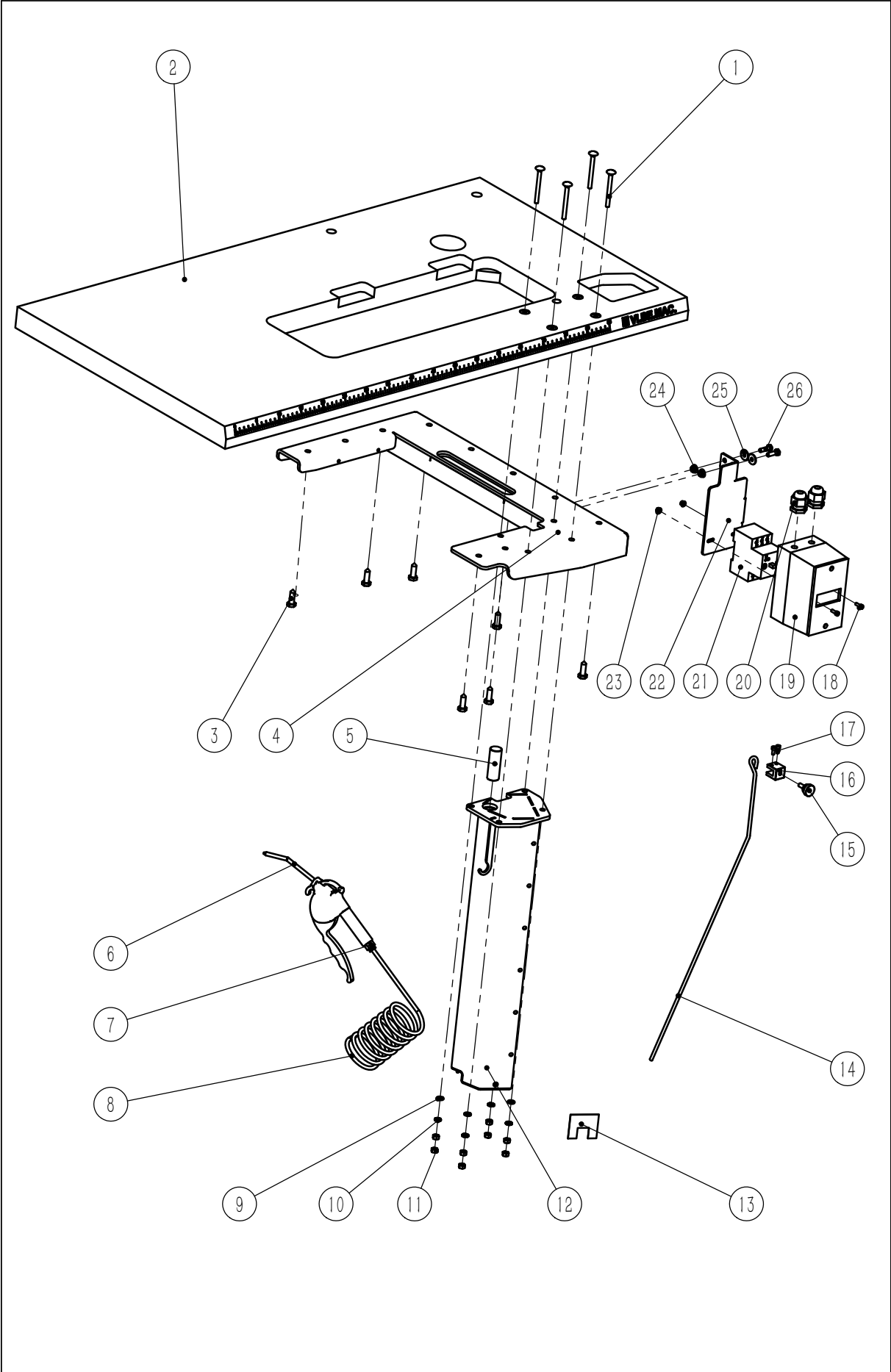
Programmable Skip Twin Needle Unit And Corner



# 目 录

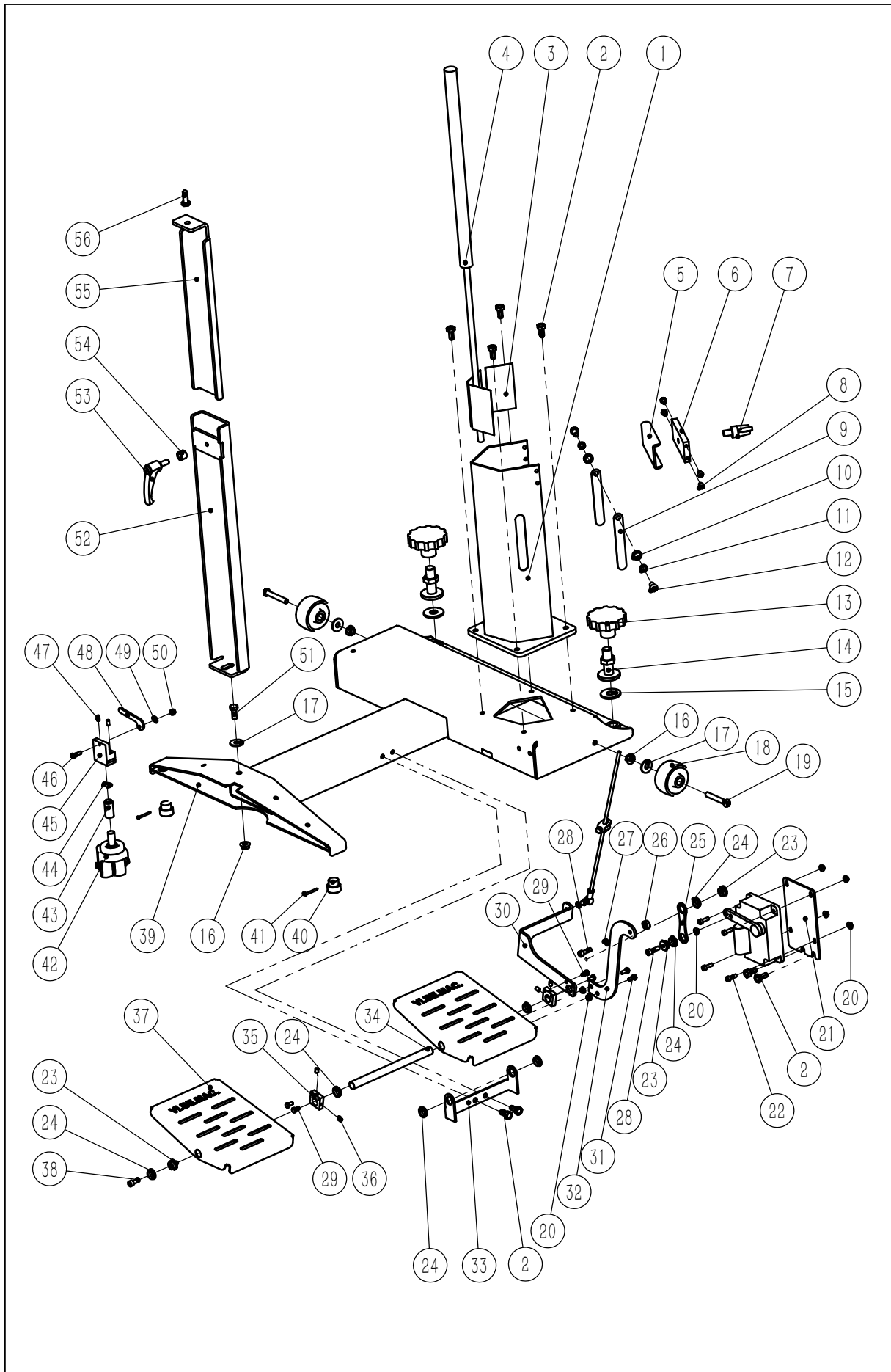
## Content

第一部件、机架上部件 —— Parts on the rack.....	1
第二部件、机架下部件 —— Parts under the rack.....	3
第三部件、气源部件 —— Air source parts.....	7
第四部件、独立剪线部件 —— Trimming parts.....	9
第五部件、扫线部件 —— Sweeping parts.....	11
第六部件、吸线部件 —— Suction parts.....	13
第七部件、抬压脚部件 —— Presser foot lifting parts.....	15
第八部件、电控与针杆分离部件 —— Control box and split needle bar parts.....	17



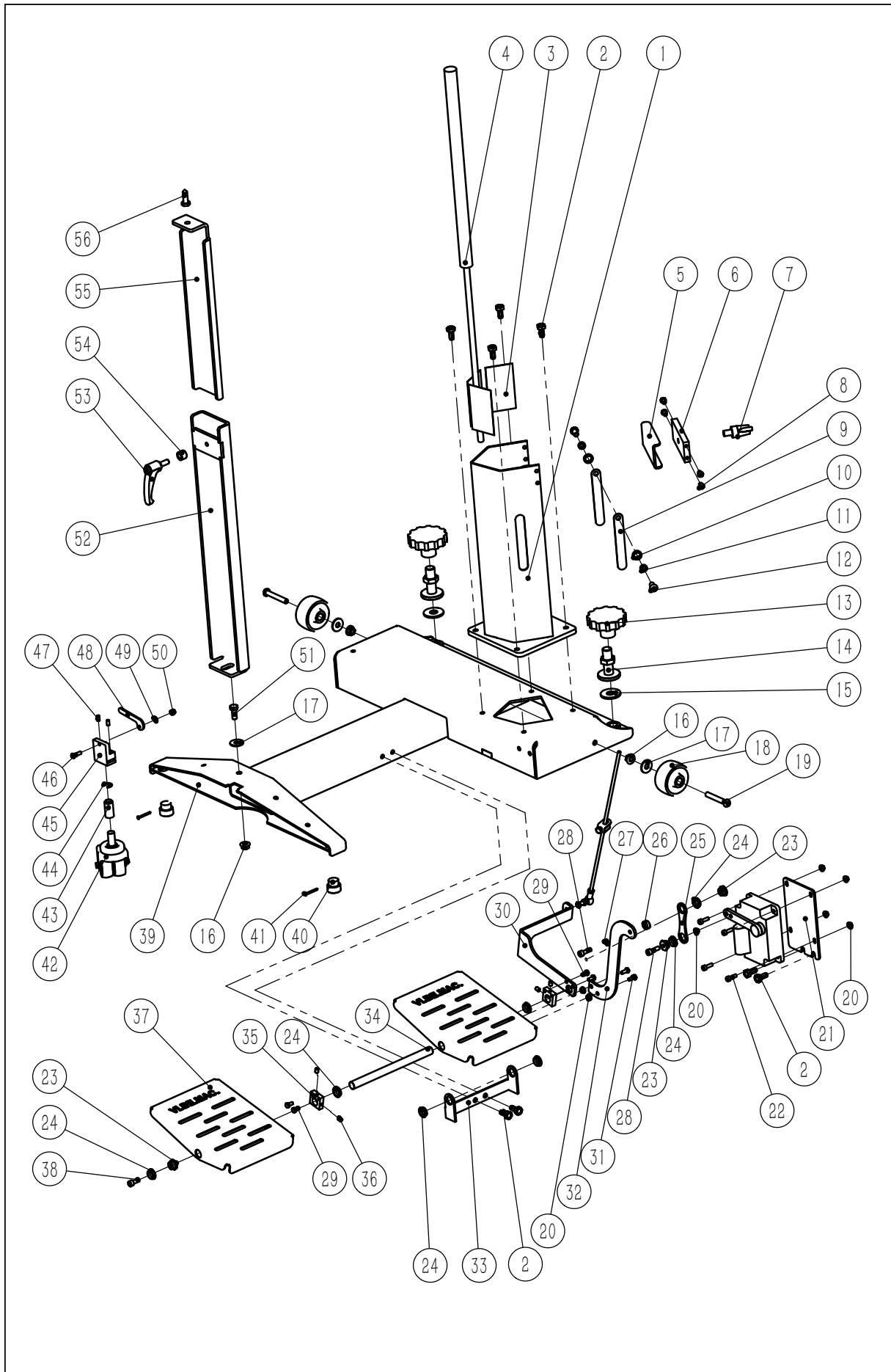
一、机架上部件 —— Parts on the rack

序号 NO.	公司件号 Part NO.	名称	Description	数量 Number
1	481S30051	马车螺钉M6×65	Screw M6×65	4
2	185531007	台板	Table	1
3	1855NS12001	六角头木螺钉8×25	Screw 8×25	7
4	930200207	台板安装面组件	Support table assy.	1
5	185531032	液压杆延长柱	Support	1
6	185245067	气枪X-AGR	Air gun X-AGR	1
7	40736018	螺纹直通APC6-02	Threaded tube APC6-02	1
8	182345040	螺旋气管	Spiral trachea	1
9	W01003	M6垫片	Washer M6	4
10	70128220	M6锥形双面斜印花垫片	Washer M6	4
11	701S16017	六角螺母M6	Nut M6	8
12	18553102300	上支撑柱组件	Upper prop	1
13	185144108	支柱塑料片	Plastic sheet of prop	1
14	185531004	密缝拉杆	Pull rod	1
15	185531006	拉杆夹头锁紧螺钉	Pull rod screw	1
16	185531005	拉杆夹头	Fixed block	1
17	S05425	内六角圆柱头螺钉M4×10	Screw M4×10	2
18	S05426	内六角圆柱头螺钉M4×12	Screw M4×12	2
19	185130113	电源开关安装盒	Power switch box	1
20	185230005	防水接头M25×1.5	Waterproof connector	2
21	185130114	交流电动机起动机	A. C. motor starter	1
22	930200208	电源安装板	Power switch mounting plate	1
23	N01050	六角法兰面螺母M4	Nut M4	2
24	N04004	六角法兰面螺母M6	Nut M6	2
25	W04007	大垫圈6	Washer M6	2
26	L02147	六角头螺栓M6×20	Bolt M6×20	2



## 二、机架下部件 —— Parts under the rack

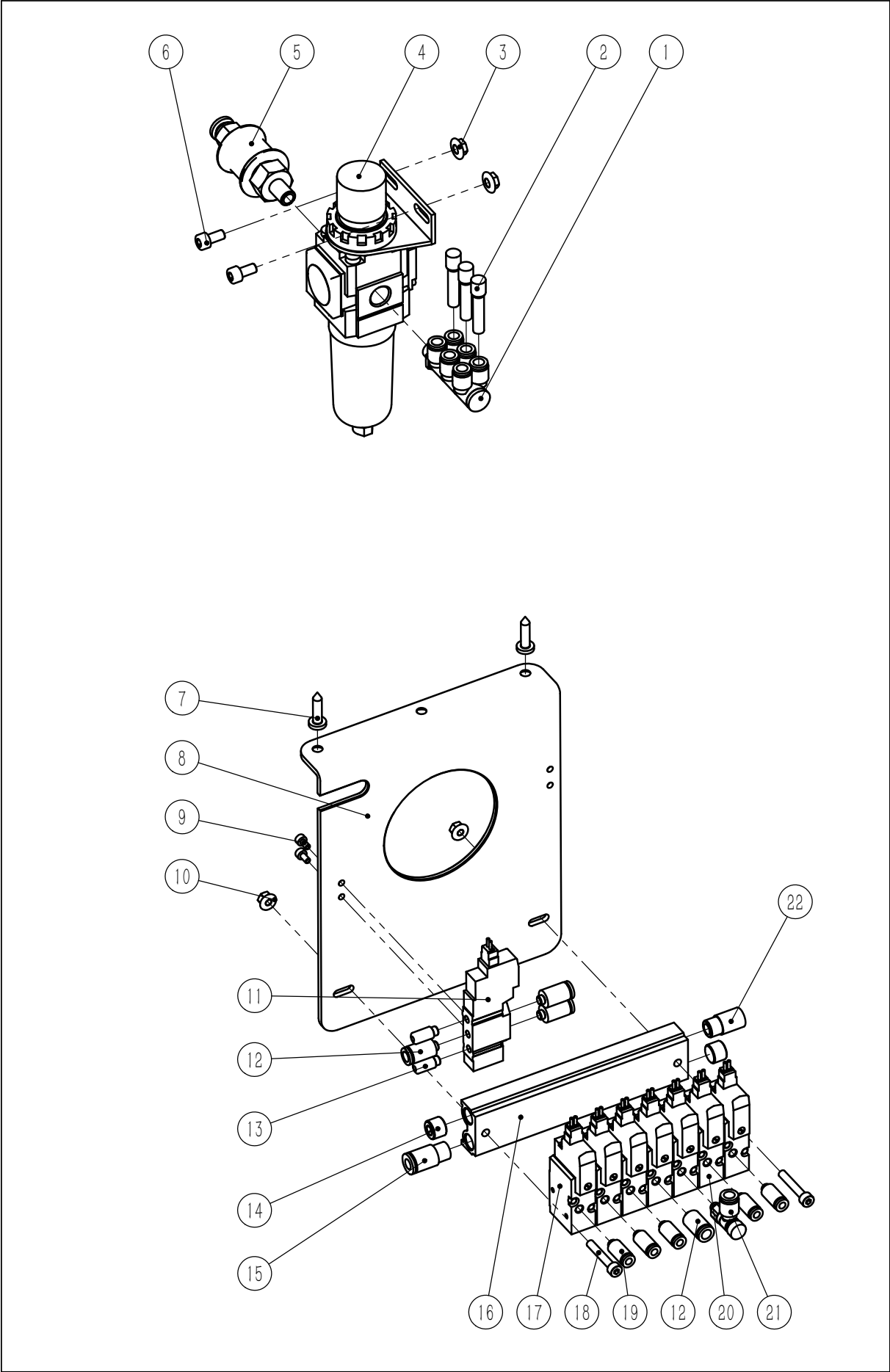
序号 NO.	公司件号 Part NO.	名称	Description	数量 Number
1	18513210300	下支柱	Lower Prop	1
2	1851NS12101	自攻锁紧螺栓M8×15	Bolt M8×15	8
3	185144108	支柱塑料片	Plastic sheet of prop	3
4	185120101	机架液压助力缸	Hydraulic power cylinder	1
5	185132104	上支柱压紧板	Upper prop pressing plate	1
6	185109101	上支柱压紧板支撑块	Pressing plate support block	1
7	185144104	机架升降调节手柄	Stand lifting control handle	1
8	S17879	内六角平圆头螺钉M6×10	Screw M6×10	4
9	930200196	防护条	Guard strip	2
10	185103102	防护条外挡圈	Outer ring of guard strip	2
11	185103101	防护条内挡圈	Inner ring of guard strip	2
12	701S15009	平圆头内六角螺钉M8×16	Screw M8×16	2
13	1852NS13003	支脚调节手柄	Foot adjustment handle	2
14	18510912400	地脚金属组件	Foot medal assy.	2
15	185122102	地脚橡胶垫	Foot rubber gasket	2
16	N04013	法兰螺母M8	Nut M8	3
17	W01022	M8垫片	Washer M8	3
18	185231006	滚轮	Roller	2
19	S17891	平圆头内六角螺钉M8×55	Screw M8×55	2
20	N04005	六角法兰面螺母M5	Nut M5	7
21	930200206	调速器安装板	Pedal switch mounting plate	1
22	S05339	内六角圆柱头头螺钉M5×16	Screw M5×16	4
23	185102104	六角铜制转轴短	Hex. Copper shaft(short)	3
24	185144103	塑料斜开口轴套	Plastic oblique open casing	7
25	185105101	脚踏开关连杆	Pedal switch rod	1
26	185531020	调速器隔套	Pedal switch rod spacer	1
27	W01003	M6垫片	Washer M6	1
28	S05435	内六角圆柱头螺钉M6×20	Screw M6×20	2
29	L02139	六角头全牙螺栓M5×10	Bolt M5×10	4
30	185531021	拉杆连接板	Connecting plate	1
31	L02115	六角头全牙螺栓M5×12	Bolt M5×12	2
32	930200205	调速器驱动板	Pedal connecting rod	1
33	185531018	脚踏安装座	Pedal mounting plate	1
34	185531017	脚踏支撑轴	Pedal support shaft	1
35	185531016	脚踏挡块	Pedal stop block	2
36	S09007	内六角平端紧定螺钉M6×8	Screw M6×8	4
37	930200204	脚踏	Pedal	2
38	S05918	内六角圆柱头螺钉 M6×16	Screw M6×16	1
39	930200203	底部安装座组件(喷漆)	Bottom mounting rack	1
40	185122101	止动凸型橡胶柱	Stop male rubber pillar	2
41	S23008	自攻螺钉ST2.9×30	Screw ST2.9×30	2
42	185231009	万向轮	Universal wheel	1
43	185102101	万向脚轮螺纹套	Wheel threaded bush	1
44	70508002	开口挡圈8	Open ring washer	1
45	185109102	脚轮高度限位块	Wheel height blocker	1
46	S17888	内六角平圆头螺钉M5×18	Screw M5×18	1
47	S09009	平端紧定螺钉M5×10	Screw M5×10	2
48	185110101	脚轮高度调节杆	Wheel height lever	1
49	W06017	碟形弹簧D12d5.3t0.8	Belleville spring D12d5.3t0.8	1
50	N08010	非金属嵌件六角锁紧螺母M5	Nut M5	1



## 二、机架下部件 —— Parts under the rack

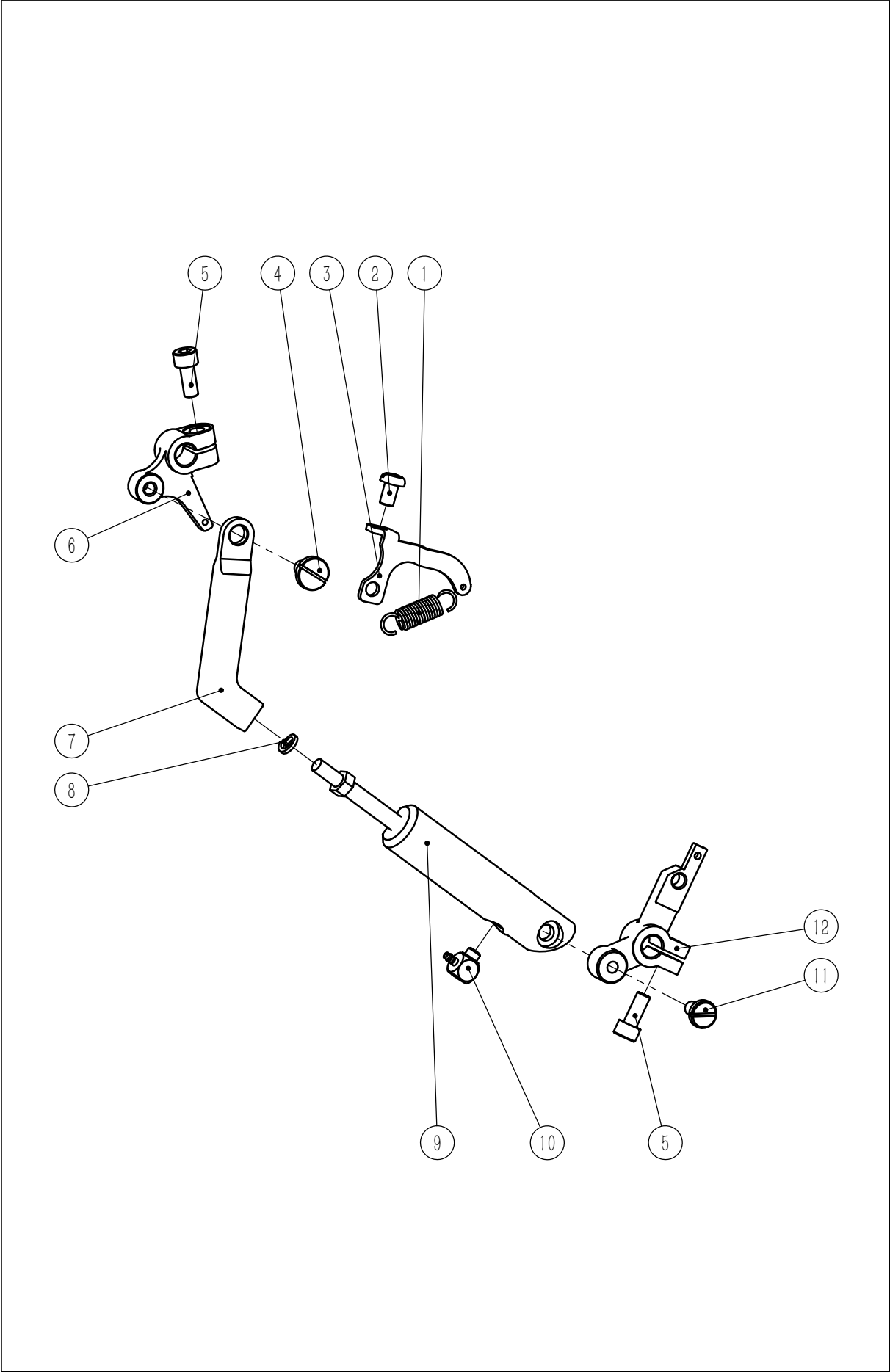
51	L02108	六角头全牙螺栓M8×20	Bolt M8×20	1
52	930200202	下支撑杆组件	Lower support rod	1
53	185544002	紧定手柄M8×20	Handle M8×20	1
54	1852NS16011	自制厚螺母	Nut	1
55	930200201	上支撑杆	Upper support rod	1
56	1855NS12001	六角头木螺钉8×25	Screw 8×25	1





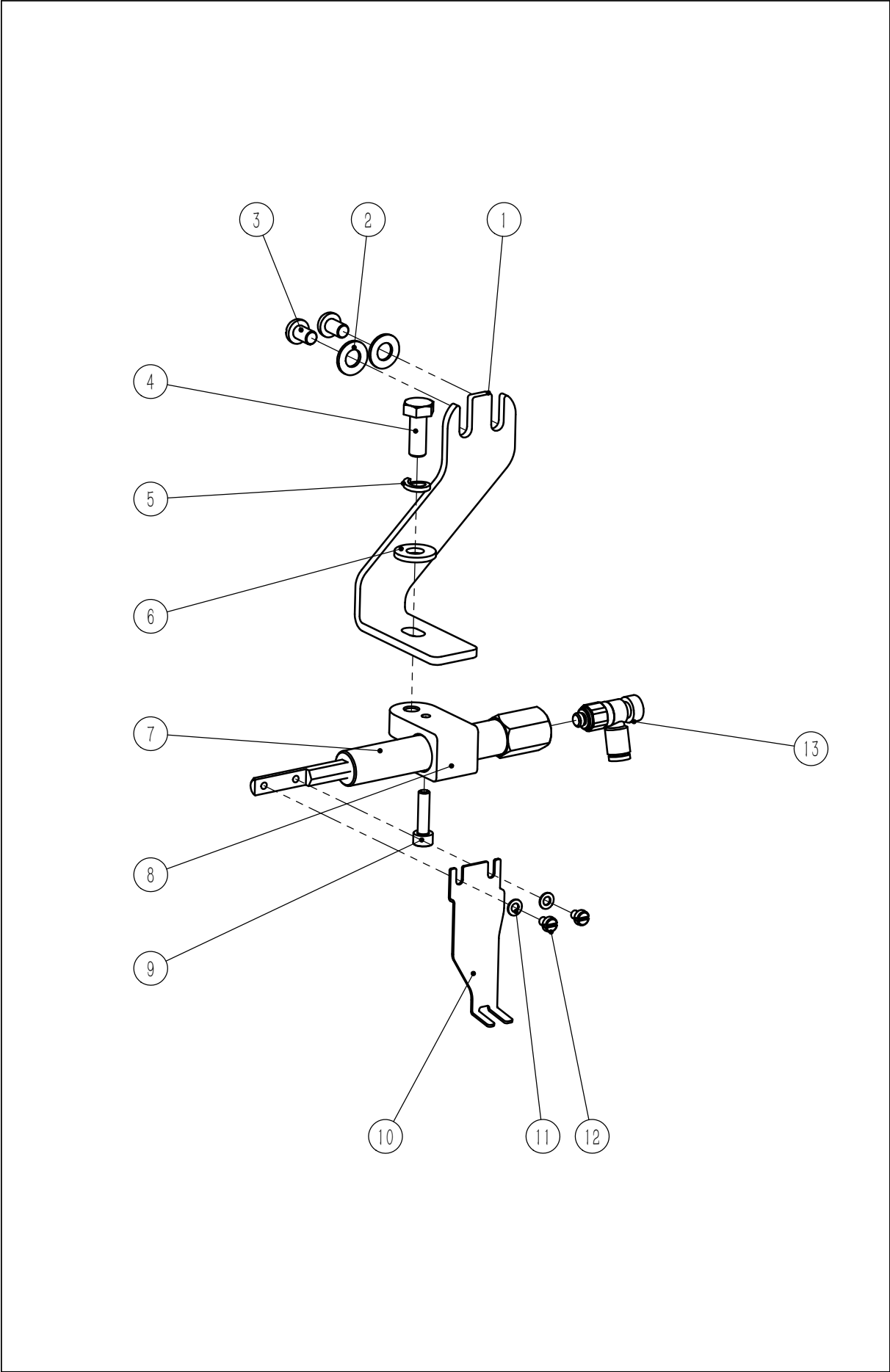
### 三、气源部件 —— Air source parts

序号 NO.	公司件号 Part NO.	名称	Description	数量 Number
1	42136018	双管万向弯头	Universal elbow	1
2	42136017	快换插头KQ2P-06	Quick change elbow	3
3	N04005	六角法兰面螺母M5	Nut M5	2
4	185145121	过滤减压阀	Filter regulator	1
5	42130096	手动开关	Manual switch	1
6	S05912	内六角圆柱头螺钉M5×10	Screw M5×10	2
7	S16001	自攻螺钉ST4.8×20	Screw ST4.8×20	2
8	185512011	气阀固定板	Air kits mounting board	1
9	S05402	内六角圆柱头螺钉M3×6	Screw M3×6	2
10	N01050	六角法兰面螺母M4	Nut M4	2
11	40730013	双通电磁阀SY3120	Solenoid valve SY3120	1
12	18045015	接头KQ2S06-M5A	Connector KQ2S06-M5A	4
13	48145024	消音器M5	Silencer M5	2
14	407S12002	汇流板密封螺钉	Busbar sealing screw	2
15	185245016	直通接头Φ6-R1/8	Connector Φ6-R1/8	1
16	185545016	七位汇流板SS3YJ5	7-bit busbar	1
17	185145126	3通电磁阀SYJ512	3-way solenoid valve	6
18	S05929	内六角圆柱头螺钉M4×25	Screw M4×25	2
19	18045011	接头KQ2S04-M5A	Connector KQ2S04-M5A	5
20	185145133	3通电磁阀SYJ522	3-way solenoid valve	1
21	185545013	速度控制阀AS1201F	Connector AS1201F	1
22	42130092	消音器AN101	Silencer AN101	1



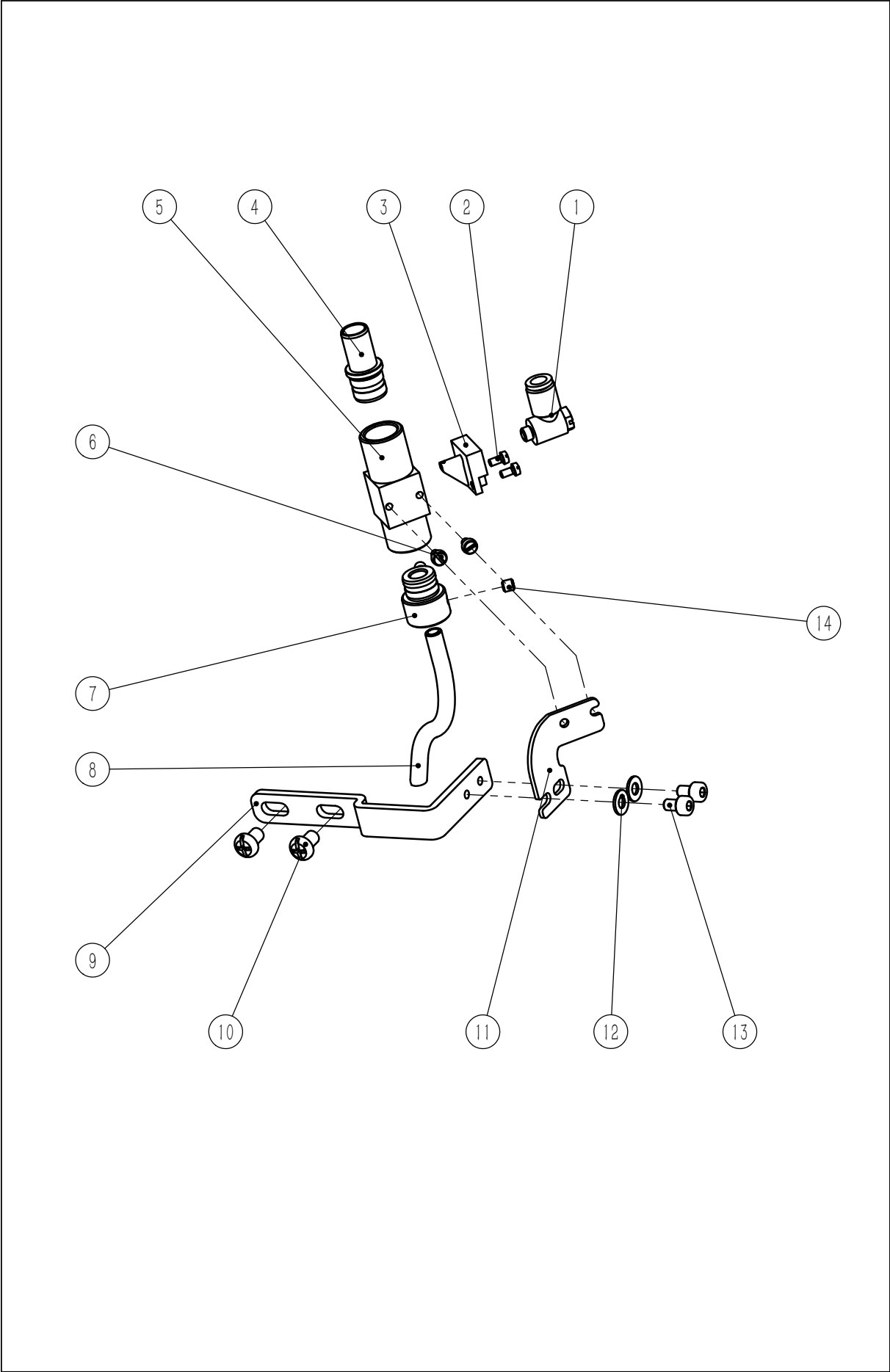
#### 四、独立剪线部件 —— Trimming parts

序号 NO.	公司件号 Part NO.	名称	Description	数量 Number
1	185527002	剪线独立保持簧	Pressed spring knife	1
2	S04028	复合槽螺钉M5×8	Screw M5×8	1
3	185512002	剪线复位拉簧板	Spring mounting plate	1
4	129S20302	轴位螺钉M5	Screw M5	1
5	207S13009	内六角圆柱头螺钉M5×12	Screw M5×12	2
6	12304002	切线杠杆L	L trimmer lever	1
7	185505002	左切线连杆	L trimmer connecting rod	1
8	W02001	标准型弹簧垫圈5	Washer	1
9	185545018	剪线独立驱动气缸	Trimmer cylinder assy.	1
10	185245007	倒勾式弯头Φ4/2.5-M5	Elbow Φ4/2.5-M5	1
11	423S20005	轴位螺钉	Screw	1
12	12304003	切线杠杆R	R trimmer lever	1



## 五、扫线部件 —— Sweeping parts

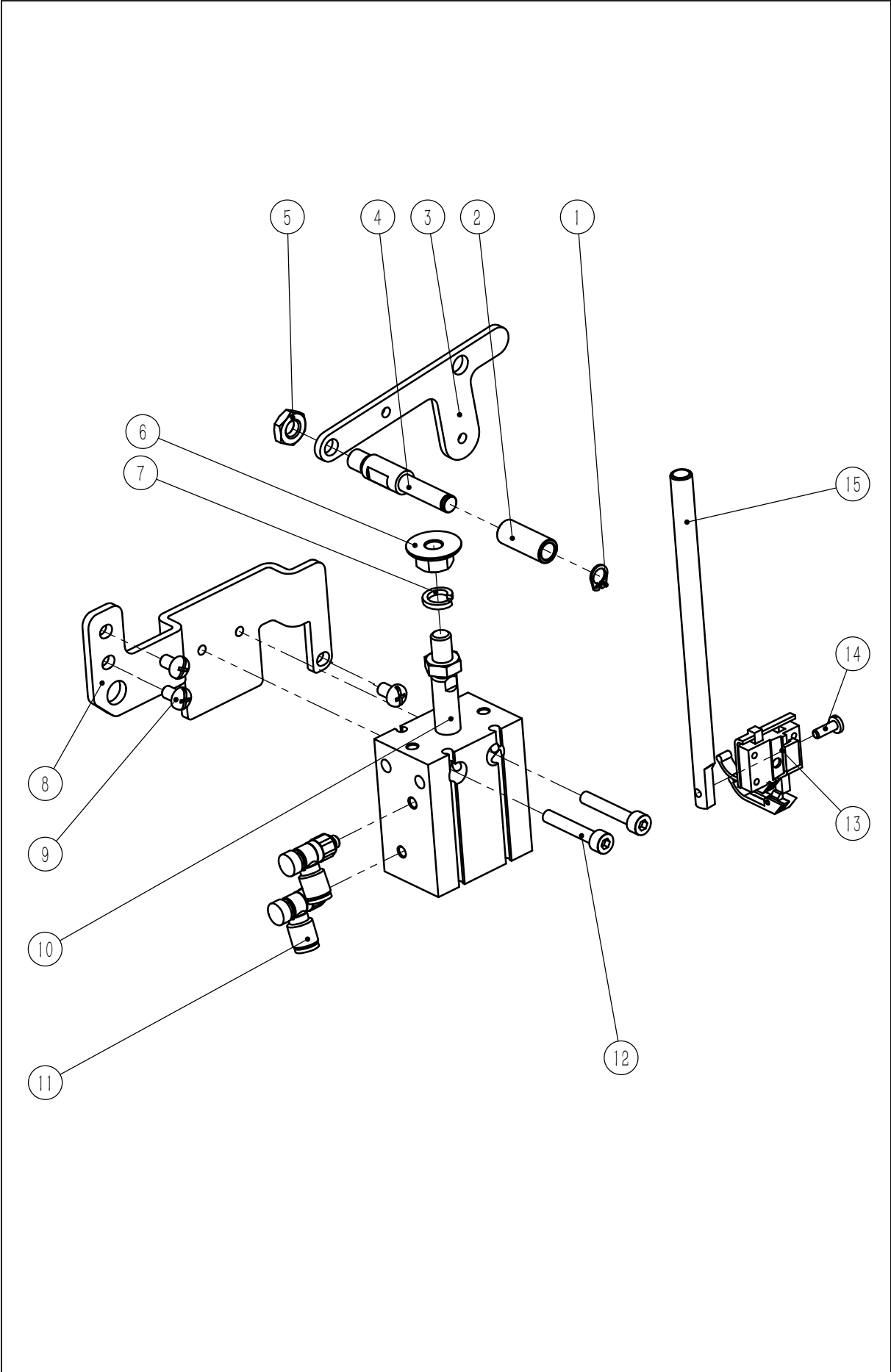
序号 NO.	公司件号 Part NO.	名称	Description	数量 Number
1	185512003	气缸安装支架	Cylinder support block	1
2	12928018	平垫圈5	Washer	2
3	S04028	复合槽螺钉M5×8	Screw M5×8	2
4	L02039	六角螺栓M6×16	Bolt M6×16	1
5	W02004	标准型弹簧垫圈6	Washer	1
6	12928002	垫圈	Washer	1
7	185545019	扫线气缸	Cylinder	1
8	185504004	气缸固定曲柄	Cylinder support holder	1
9	S05427	内六角圆柱头螺钉M4×16	Screw M4×16	1
10	185512004	扫线板	Sweeper board	1
11	12928019	垫圈3	Washer	2
12	S01601	开槽圆柱头螺钉M3×4	Screw M3×4	2
13	41536009	气管接头GRLZ-M5	Elbow GRLZ-M5	1



## 六、吸线部件 —— Suction parts

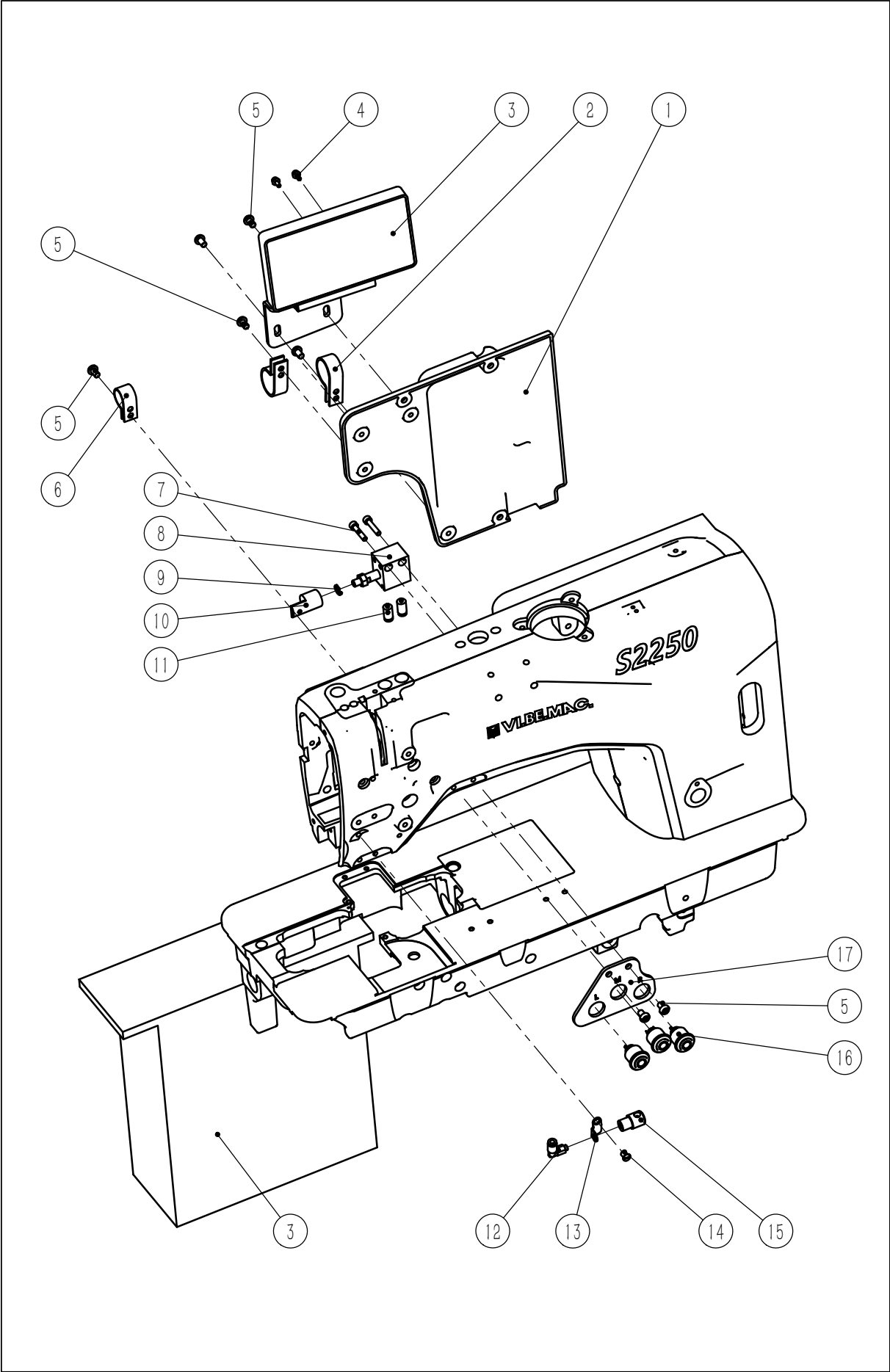
序号 NO.	公司件号 Part NO.	名称	Description	数量 Number
1	185545014	快换弯头KQ2V06-M5A	Quick change elbow KQ2V06-M5A	1
2	S01605	开槽圆柱头螺钉M2.5×5	Screw M2.5×5	2
3	185209052	吹气座	Blowing seat	1
4	185545010	气管接头	Pipe connector	1
5	185545009	吸气管座	Suction socket	1
6	207S11020	开槽圆柱头螺钉	Screw	2
7	185545011	吸线管接头	Suction pipe joint	1
8	185521001	吸线管	Inspiratory tube	1
9	185512005	吸线支架	Holder	1
10	S04028	复合槽螺钉M5×8	Screw M5×8	2
11	185512006	出气管接头支架	Holder	1
12	W01001	平垫圈4	Washer M4	2
13	S05429	内六角圆柱头螺钉M4×6	Screw M4×6	2
14	S09006	内六角平端紧定螺钉M4×4	Screw M4×4	2





七、抬压脚部件 —— Presser foot lifting parts

序号 NO.	公司件号 Part NO.	名称	Description	数量 Number
1	14029003	轴用弹性挡圈7	Retaining ring	1
2	185544001	尼龙滚轮	Nylon roller	1
3	12912095	膝控提升杠杆(内置)	Lever	1
4	185526001	抬压脚链接销	Connecting pin	1
5	N01028	六角薄螺母M8	Nut M8	1
6	112309001	六角法兰面螺母M8	Nut M8	1
7	W02023	标准型弹簧垫圈 $\phi 8$	Washer $\phi 8$	1
8	112912001	气缸左支架	Left bracket of cylinder	1
9	S04028	复合槽螺钉M5 $\times$ 8	Screw M5 $\times$ 8	3
10	185545012	抬压脚气缸CU25-20D	Cylinder of presser-foot	1
11	185545013	速度控制阀AS1201F-M5	Connector AS1201F	2
12	S05204	内六角圆柱头螺钉M5 $\times$ 30	Screw M5 $\times$ 30	2
13	18551600100	高低压脚组件(1/4")	Presser foot assembly	1
14	101S11009	活压脚螺钉	Screw	1
15	185502001	压杆	Presser foot bar	1



## 八、电控与针杆分离部件 —— Control box and split needle bar parts

序号 NO.	公司件号 Part NO.	名称	Description	数量 Number
1	930200162	后盖板	Rear cover plate	1
2	41711026	电线夹23	Cable clip 23	2
3	18553000100	双针电控组件	Control box	1
4	421S13061	内六角圆柱头螺钉(带垫)M3×8	Screw M3×8	2
5	S04028	复合槽螺钉M5×8	Screw M5×8	7
6	185511003	R型线夹16	R Cable clip 16	1
7	S05970	内六角圆柱头螺钉M4×20	Screw M4×20	2
8	185545001	微型气缸CUJB16-10DM	Cylinder CUJB16-10DM	1
9	W02004	标准型弹簧垫圈6	Washer	1
10	185505001	针杆分离气缸接头	Cylinder connector	1
11	185545002	气管接头KQ2S04-M3G	Pipe connector	2
12	42136001	快换弯头KQ2L04	Quick change elbow KQ2L04	1
13	185512010	面线稳线气缸支架	Cylinder support	1
14	129S17002	螺钉M5x8	Screw M5×8	1
15	185545017	面线稳线气缸组件	Cylinder	1
16	82130232	常开小按钮Φ12	Button Φ12	3
17	185512001	针杆分离开关安装板	Switch mounting plate	1



关注威比玛公众微信号

## 意大利威比玛公司

Italy company : VI.BE.MAC s.p.a

意大利维罗纳省乔瓦尼卢帕托托市蒙特帕斯特罗7/i号  
37057 S.Giovanni Lupatoto(VR),Italy-Via Monte Pastello 7/i  
电话/TEL : +39 045 8778151/52  
传真/FAX : +39 045 8779024  
网址/HTTP : www.vibemac.com  
邮箱/E-mail : sales@vbm-grp.com customercare@vbm-grp.com

## 浙江威比玛智能缝制科技有限公司

Company: Zhejiang VI.BE.MAC. Smart Sewing Technology Co., LTD.

浙江省台州市椒江区三甲东海大道东段1008号  
No. 1008 East Donghai Avenue, Jiaojiang District, Taizhou City, Zhejiang Province  
电话/TEL : 0086-0576-89086118  
网址/HTTP : www.vibemac.com  
邮箱/E-mail : sales@vbm-cn.com