



意大利威比玛 牛仔智造专家

ITALY VI.BE.MAC JEANS SMART SOLUTION

零件手册

PARTS MANUAL

2261 系列
SERIES

3针直臂式链缝埋夹机
3 Needle Chain Stitch Feed of the Arm Unit



注：公司将不定期对本书内容进行更新！
Note: We will update the manual at any time!

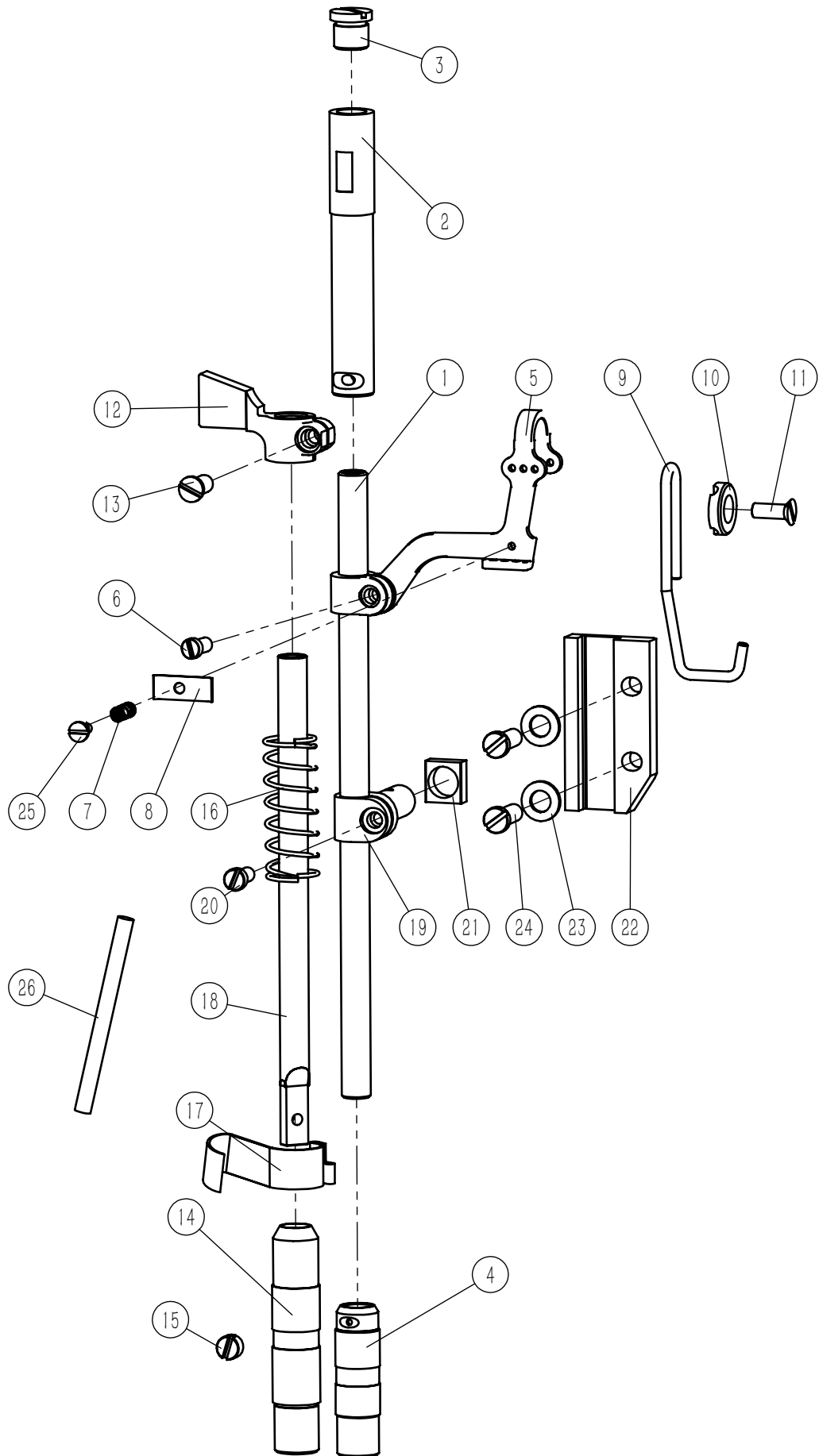
目录——Contents

机头——Sewing Head

第一部件、针杆部件——Needle bar parts	2
第二部件、上轴部件——Upper shaft parts	4
第三部件、下轴部件——Lower shaft parts	6
第四部件、供油部件——Lubrication parts	8
第五部件、弯针部件——Looper parts	10
第六部件、送料部件——Fabric feeding parts	12
第七部件、过线部件（1）——Threading parts（1）.....	14
第八部件、过线部件（2）——Threading parts（2）.....	16
第九部件、油箱部件——Oil tank parts	18
第十部件、机壳附件（1）——Attachment（1）.....	20
第十一部件、机壳附件（2）——Attachment（2）.....	22

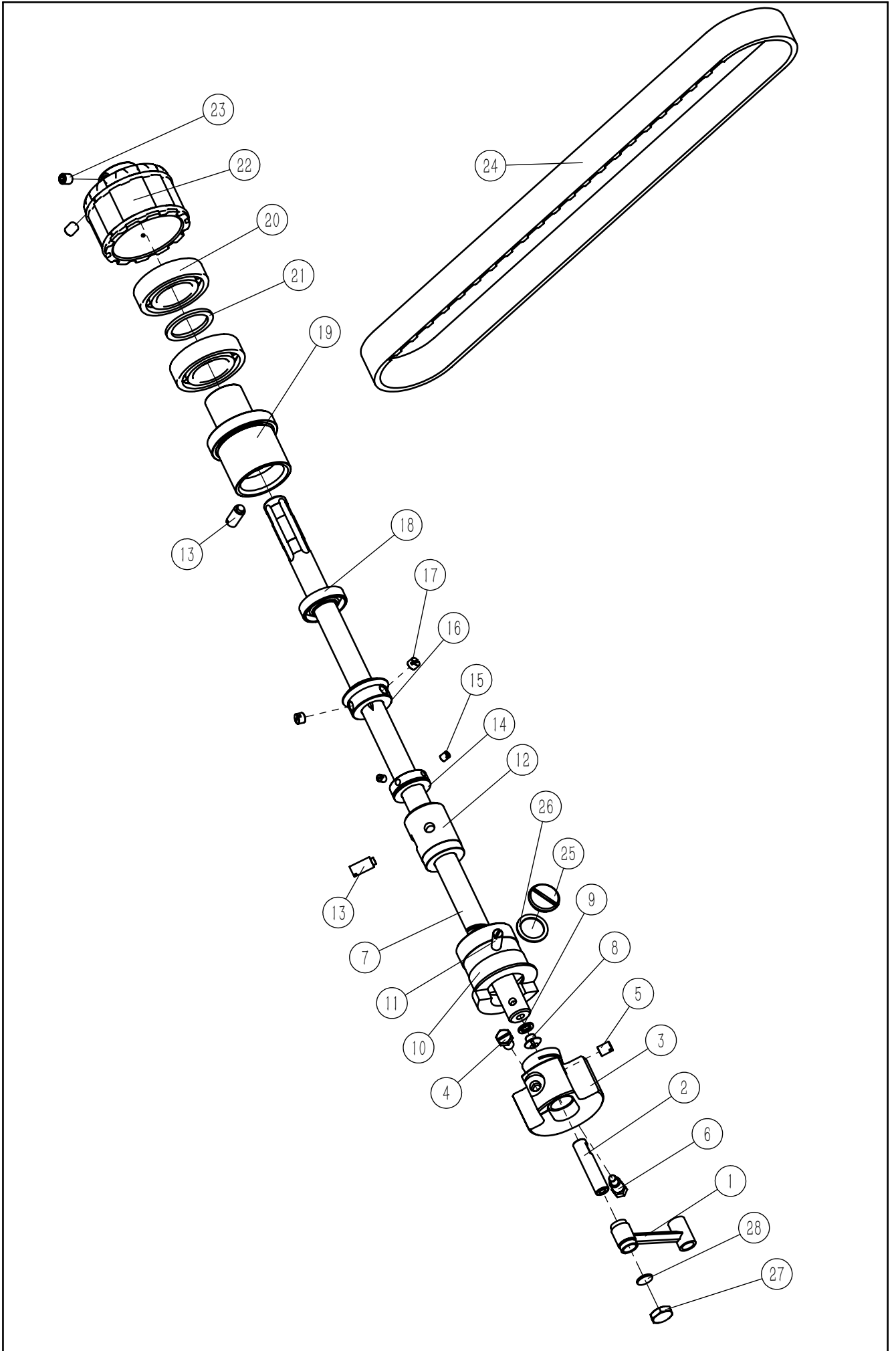
外围——Others

第一部件、机架部件——Rack parts	24
第二部件、驱动部件——Drive parts	30
第三部件、气源部件——Air source parts	32
第四部件、灯控箱部件——Light control box parts	34
第五部件、拖布部件——Drag cloth parts	36
第六部件、面板部件——Panel parts	44
第七部件、针位部件——Pin position parts	46
第八部件、LED灯部件——LED lights parts	48
第九部件、停针位感应部件——Needle stop parts	50
第十部件、剪线部件——Trimming parts	52
第十一部件、附件——Accessory parts	54



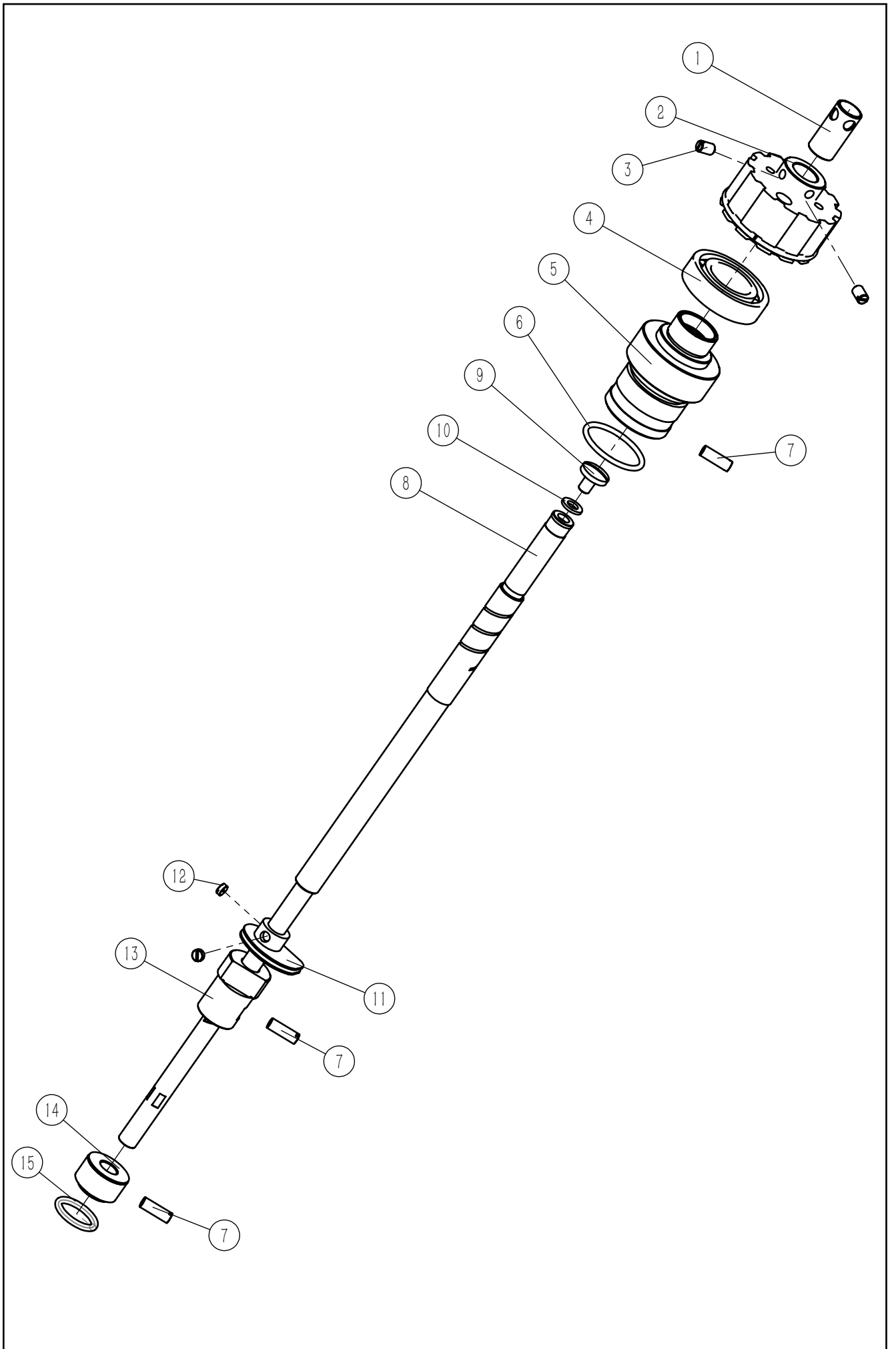
一、针杆部件——Needle bar parts

序号 NO.	公司件号 Part NO.	名称	Description	数量 Number
1	85102006	针杆	Needle Bar	1
2	85103014	针杆上套	Needle Bar Bush(upper)	1
3	851S11021	针杆上螺钉	Screw 11/32x28	1
4	85103013	针杆下轴套	Needle Bar Bush(lower)	1
5	85112015	挑线过线板	Thread Take-up Plate	1
6	1851NS11009	挑线过线板螺钉	Screw 9/64x40	1
7	20727002	压簧	Circlip	1
8	40613003	过线压板	Upper Thread Take-up Holder	1
9	40613006	挑线过线架	Upper Thread Guide	1
10	40628003	垫片	Washer	1
11	406S30005	螺钉	Screw 9/64x40	1
12	85109002	下压杆导架	Presser Bar Lifting Bracket	1
13	1851NS11001	下压杆导架紧固螺钉	Screw 11/64x40	1
14	85103001	压杆下套	Presser Bar Bushing(lower)	1
15	1851NS15001	压杆下套螺钉	Screw 15/64x28	1
16	85127003	压杆弹簧	Presser Bar Spring	1
17	85112016	油线夹	Oil Cotton Container	1
18	185102119	压杆	Presser Bar	1
19	85102004	针杆连接轴	Needle Bar Connecting Rod	1
20	1851NS11008	针杆连接轴紧固螺钉	Screw 9/64x40	1
21	185109002	针杆连接轴滑块	Slide Block	1
22	85109010	滑块座	Slide Block Base	1
23	W01150	滑块座固定垫片	Washer	2
24	1851NS11010	滑块座固定螺钉	Screw 11/64x40	2
25	1851NS11031	挑线过线板弹簧螺钉	Screw 3/32x56	1
26	21323007	油线	Oil Cotton	1



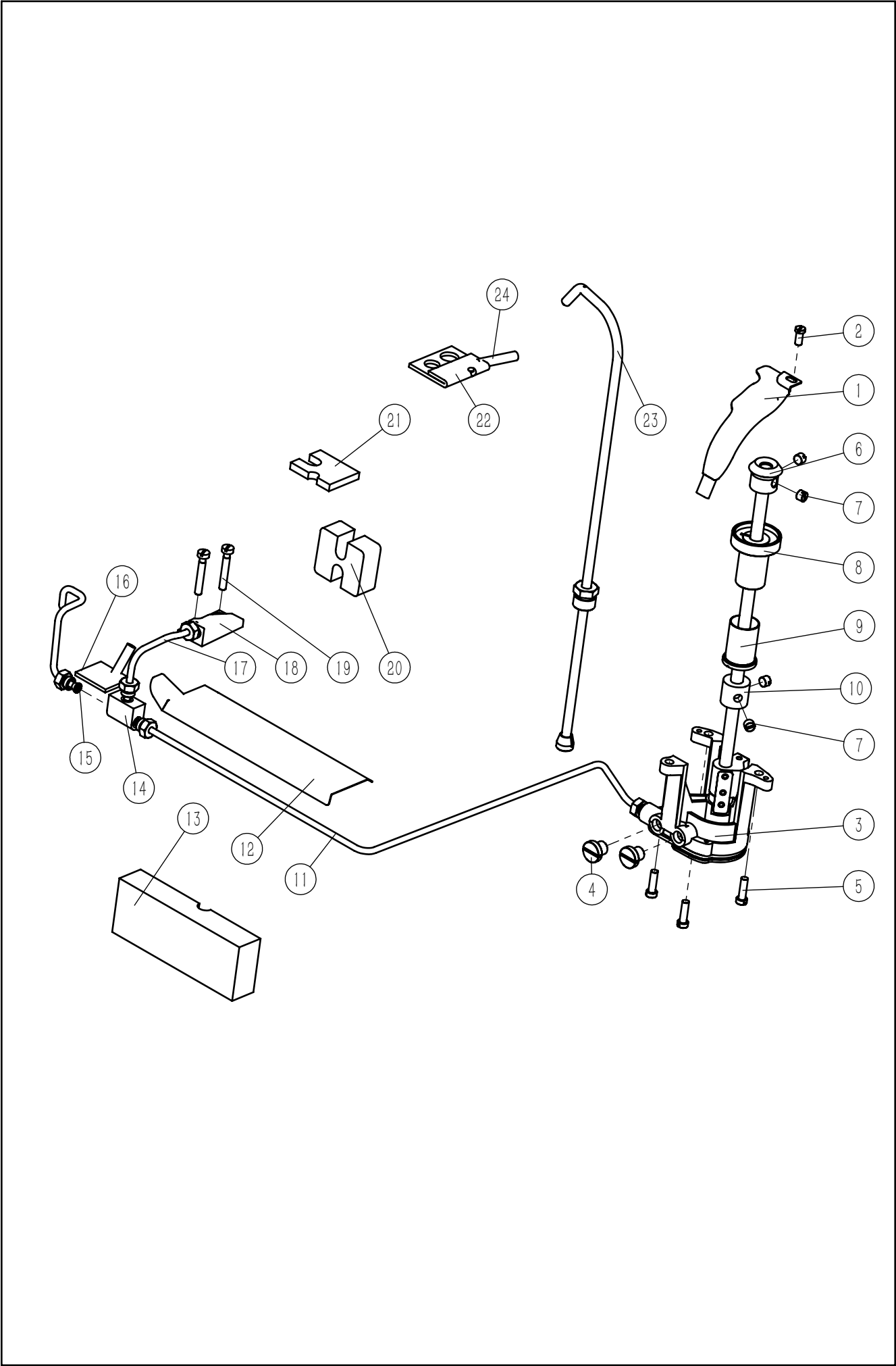
二、上轴部件——Upper shaft parts

序号 NO.	公司件号 Part NO.	名称	Description	数量 Number
1	85105002	挑线连杆	Thread Take-up Connecting Bar	1
2	85126005	针杆曲柄销	Pin Of Needle Bar Crank	1
3	85104020	针杆曲柄	Needle Bar Crank	1
4	1851NS12002	针杆曲柄销固定螺钉	Screw 1/4x40	1
5	1851NS15006	针杆曲柄销紧固螺钉	Screw 1/4x40	1
6	851S20001	针杆曲柄固定螺钉	Screw 9/32x28	1
7	85102005	上轴	Upper Shaft	1
8	851S30002	上轴前螺钉	Screw 1/4x28	1
9	85128006	上轴前垫片	Washer	1
10	85103010	上轴前轴套	Upper Shaft Bush(front)	1
11	1851NS15009	上轴前套固定螺钉	Screw 15/64x28	1
12	85103011	上轴中轴套	Upper Shaft Bush(center)	1
13	1851NS15013	上轴中套固定螺钉	Screw 9/32x28	2
14	85103009	挡圈	Retaining Ring	1
15	1851NS15012	油泵轴挡圈紧固螺钉	Screw 1/4x40	2
16	85125002	上轴锥齿轮	Upper Shaft Bevel Gear	1
17	1851NS15012	油泵轴挡圈紧固螺钉	Screw 1/4x40	2
18	185122005	上轴后轴套油封	Oil Seal	1
19	85103012	上轴后轴套	Upper Shaft Bush(back)	1
20	B04067	深沟球轴承	Roll Bearing	2
21	85103021	上轴轴承垫圈	Washer	1
22	8513500200	上轴同步带轮组件	Upper Shaft Time Pulley Assy.	1
23	1851NS15008	上轴同步带轮固定螺钉	Screw 1/4x40	2
24	85135006	主轴同步带	Main Shaft Time Belt	1
25	851S11020	上轴侧面螺钉	Screw M16x1	1
26	85128007	上轴侧面垫圈	Gasket	1
27	1851NS16002	挑线连杆螺母	Nut	1
28	185122006	挑线连杆密封垫	Seal Gasket	1



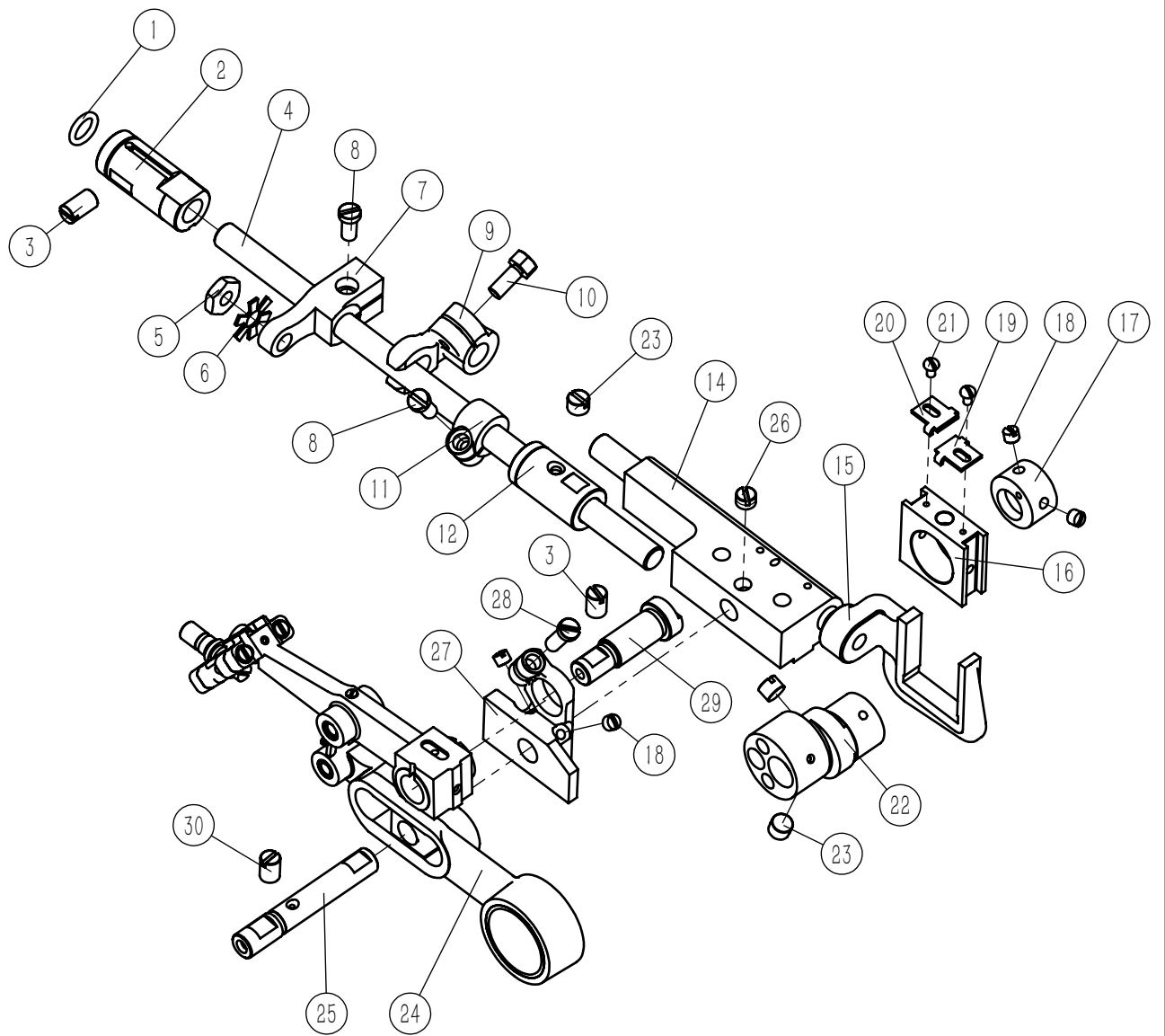
三、下轴部件——Lower shaft parts

序号 NO.	公司件号 Part NO.	名称	Description	数量 Number
1	85112017	下轴同步带轮轴套	Lower Time Pulley	1
2	8513500400	下轴同步带轮组件	Lower Shaft Time Pulley Assy.	1
3	S10021	凹端紧定螺钉 M6×10	Screw M6	2
4	B04067	深沟球轴承	Roll Bearing	1
5	85103017	下轴后轴套	Lower Shaft Bush(back)	1
6	185122002	下轴后轴套O型圈	O Ring	1
7	1851NS15007	下轴前轴套固定螺钉	Screw 15/64x28	3
8	85102007	下轴	Lower Shaft	1
9	1851NS11030	下轴轴端螺钉	Screw 1/4X24	1
10	W03028	弹簧垫圈M6	Washer M6	1
11	18511010200	打线凸轮	Thread Take-up Cam	1
12	1851NS15010	打线凸轮紧固螺钉	Screw 1/4x40	2
13	85103016	下轴中轴套	Lower Shaft Bush(center)	1
14	85103015	下轴前轴套	Lower Shaft Bush(front)	1
15	185122003	下轴端盖O型圈	O Ring	1



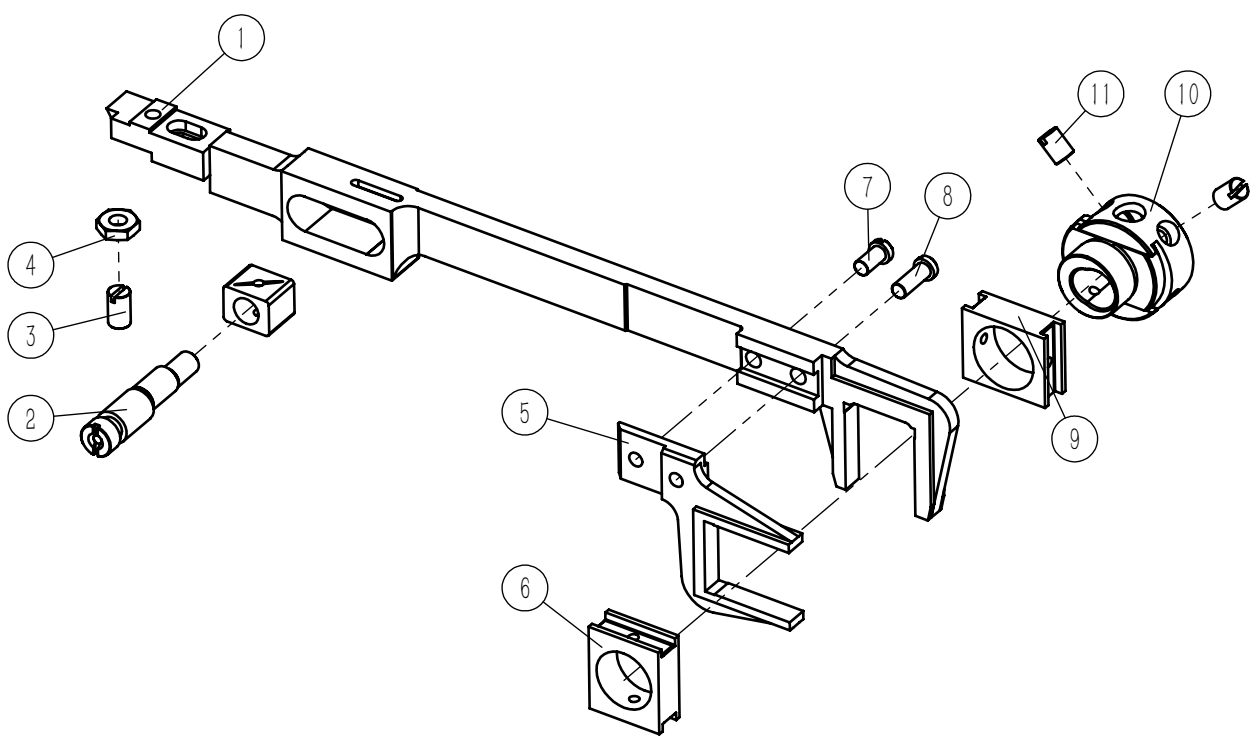
四、供油部件——Lubrication parts

序号 NO.	公司件号 Part NO.	名称	Description	数量 Number
1	85112006	导油板	Oil Leader	1
2	1851NS11006	上盖板固定螺钉	Screw 11/64x40	1
3	8512000100	油泵组件	Oil Pump Assembly	1
4	851S10006	油泵堵油螺钉	Screw 11/32x28	2
5	1851NS11007	油泵固定螺钉	Screw 11/64x40	3
6	85125001	油泵锥齿轮	Bevel Gear	1
7	1851NS15012	油泵轴挡圈紧固螺钉	Screw 1/4x40	4
8	85103005	油泵轴上轴套	Pump Shaft Bush (upper)	1
9	85103006	油泵轴下轴套	Pump Shaft Bush (lower)	1
10	85103007	油泵轴限位轴套	Pump Shaft Block Bush	1
11	8512100900	油管组件(右)	Oil Tube Assembly(right)	1
12	85112013	油管盖板	Oil Tube Cover	1
13	85123003	下轴油棉	Oil Felt	1
14	85136003	油管三通接头	Oil Tube Connection	1
15	8512100500	油管组件(左)	Oil Tube Assembly(left)	1
16	85123001	吸油棉	Oil Felt	1
17	8512100700	油管组件(中)	Oil Tube Assembly(midder)	1
18	85121003	油管接头	Oil Connection	1
19	1851NS11028	油管接头固定螺钉	Screw 3/16x27	2
20	85123004	弯针轴油棉	Oil Felt	1
21	85123005	送料杆油棉	Oil Felt	1
22	85123002	针杆处吸油棉	Needle Bar Oil Felt	1
23	8512101300	导油管组件	Oil Tube Assembly	1
24	10121007	回油管	Oil Tube	2



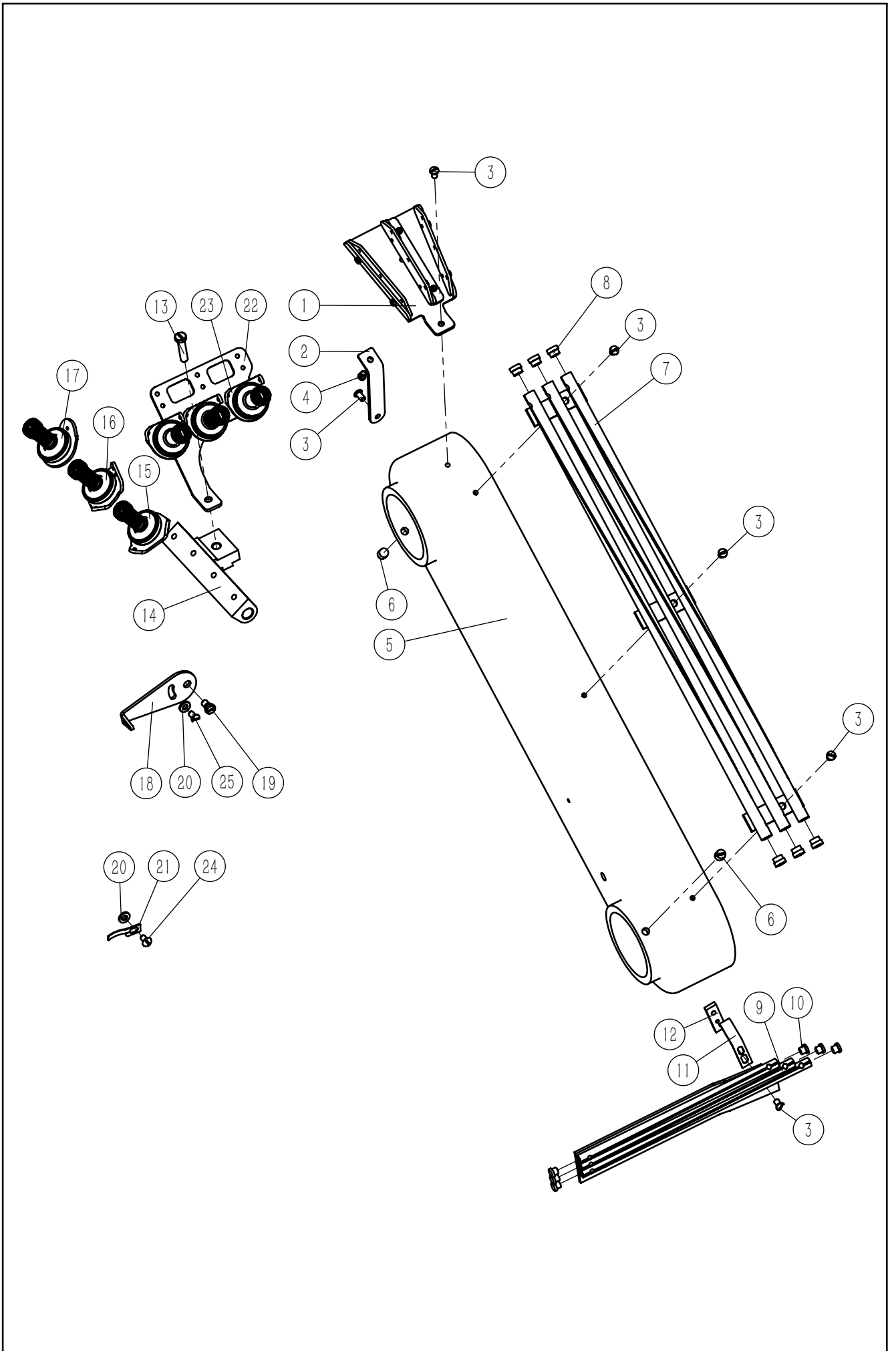
五、弯针部件——Looper parts

序号 NO.	公司件号 Part NO.	名称	Description	数量 Number
1	185122001	弯针轴后套O型圈	O Ring	1
2	85103003	弯针轴后套	Looper hold Shaft Bush(back)	1
3	1851NS15003	针距调节座固定螺钉	Screw 15/64x28	3
4	85102002	弯针轴	Looper Hold Shaft	1
5	401S16002	螺帽	Nut	1
6	85128005	垫片	Washer	1
7	85104010	离合曲柄	Clutch Crank	1
8	1851NS11002	送料曲柄固定螺钉	Screw 11/64x40	2
9	85104013	小弯针离合叉	Small Looper Clutch Fork	1
10	1851NS12001	小弯针离合叉紧固螺钉	Screw 11/64x40	1
11	85108002	弯针轴挡圈	Looper Hold Shaft Retaining Ring	1
12	85103002	弯针轴前套	Looper hold Shaft bush(front)	1
13	1851NS15005	送料偏心轮固定螺钉	Screw 1/4x40	1
14	85104012	弯针离合轴座	Looper Clutch Shaft Base	1
15	85104011	弯针离合叉	Looper Clutch Fork	1
16	85109007	滑块	Slide Block	1
17	85110005	偏心轮	Eccentric Wheel	1
18	1851NS15004	偏心轮紧固螺钉	Screw 11/64x40	4
19	85112004	滑块盖(前)	Slide Block Cover(front)	1
20	85112005	滑块盖(后)	Slide Block Cover(back)	1
21	1851NS11005	滑块盖固定螺钉	Screw 3/32x56	2
22	85110004	送料偏心轮	Feed Lifting Eccentric Wheel	1
23	1851NS15005	送料偏心轮固定螺钉	Screw 1/4x40	3
24	8510401500	离合架组件	Clutch Rack Assy.	1
25	85126003	离合架销	Clutch Rack Pin	1
26	1851NS15001	压杆下套螺钉	Screw 15/64x28	1
27	85108001	离合架销挡块	Block Of Clutch Rack Pin	1
28	1851NS11010	滑块座固定螺钉	Screw 11/64x40	1
29	85126002	离合曲柄销	Pin of Clutch Crank	1



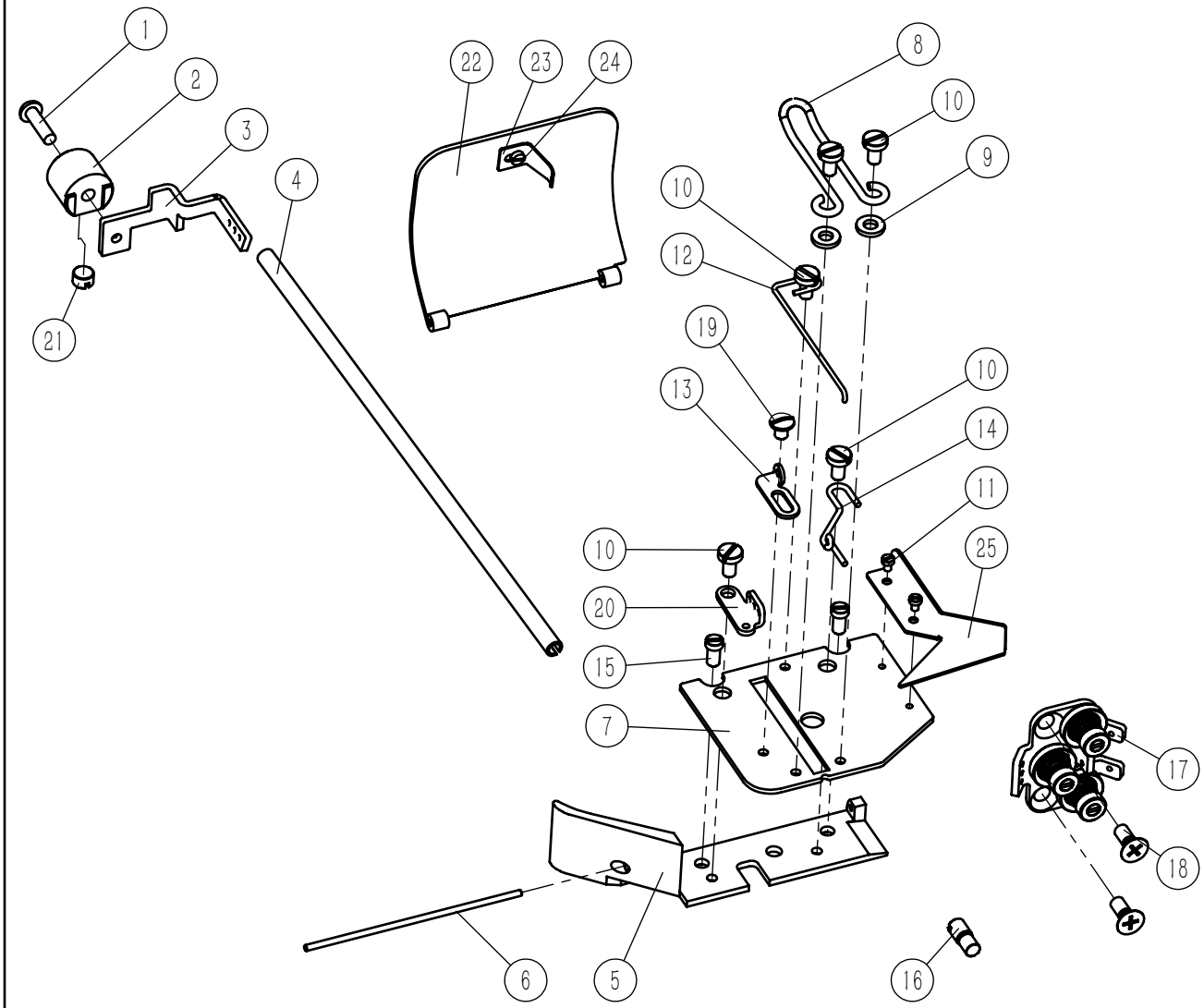
六、送布部件——Fabric feeding parts

序号 NO.	公司件号 Part NO.	名称	Description	数量 Number
1	8510500300	送料杆组件	Feed Bar Assy.	1
2	85126001	送料杆连接销	Feed Bar Connecting Pin	1
3	1851NS15002	送料杆连接销锁紧螺钉	Set Screw 15/64x28	1
4	1851NS16001	送料杆连接销锁紧螺母	Nut	1
5	85104001	送料曲柄	Feed Lifting Crank	1
6	85109005	送料曲柄滑块	Slide Block	1
7	1851NS11010	滑块座固定螺钉	Screw 11/64x40	1
8	1851NS11002	送料曲柄固定螺钉	Screw 11/64x40	1
9	85109004	送料杆滑块	Slide Block	1
10	8511000100	针距调节座组件	Stitch Length Regulator Assy.	1
11	1851NS15003	针距调节座固定螺钉	Screw 15/64x28	2



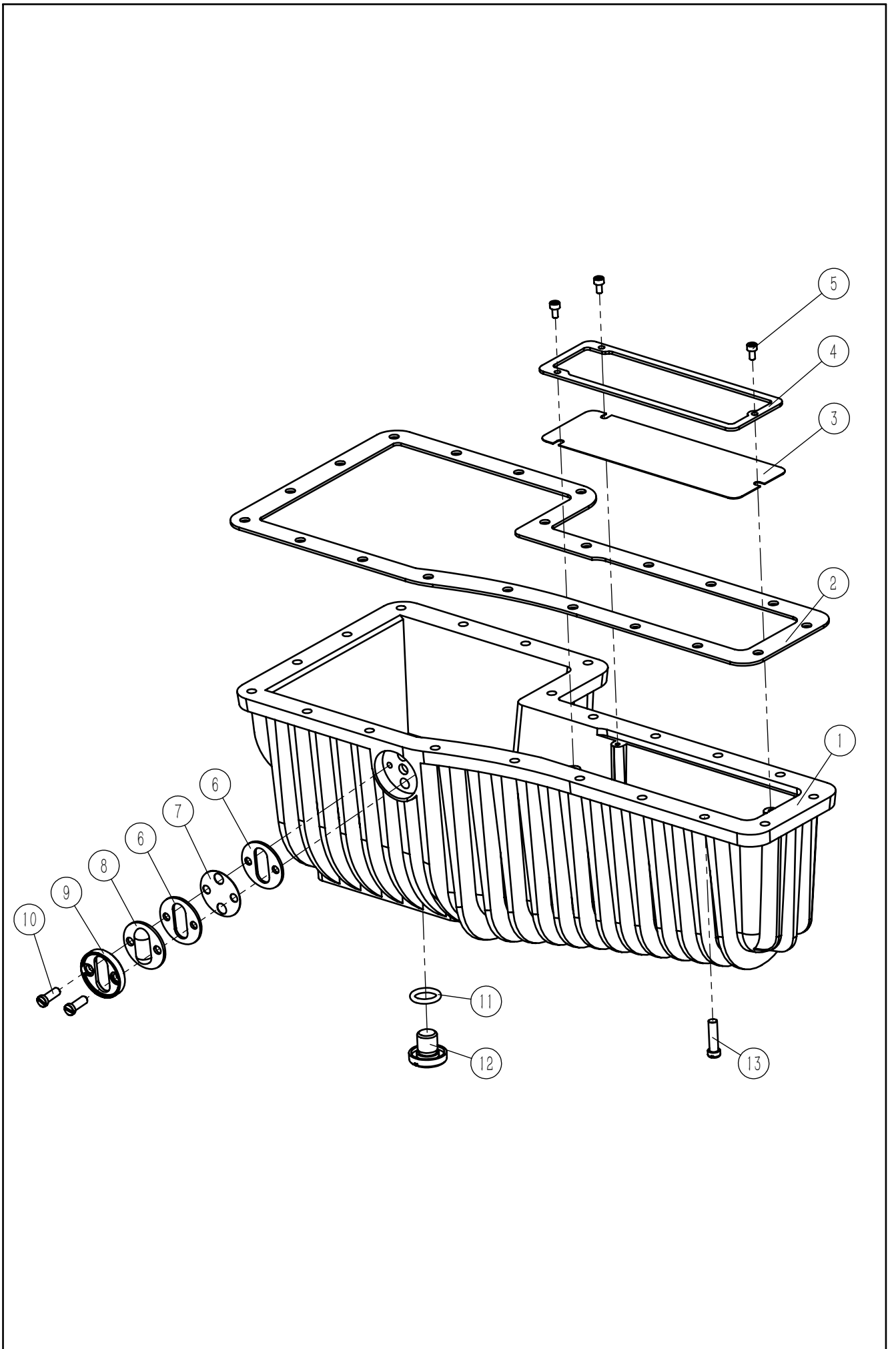
七、过线部分(1)——Threading parts(1)

序号 NO.	公司件号 Part NO.	名称	Description	数量 Number
1	4061204500	底线导线安装板	Looper Thread Guide Fix Plate	1
2	40602021	支撑板	Support Plate	1
3	1851NS11014	大过线管紧固螺钉	Screw 9/64x40	6
4	1851NS11003	针距调节辅助螺钉	Screw 9/64x40	1
5	305059	带轮箱	Pulley Box	1
6	101S15002	送料轴挡圈螺钉	Set Screw 1/4x24	2
7	305058	过线管组件	Thread Tube Assembly	1
8	85113012	过线管塞	Thread Tube Plug	6
9	305060	小过线管组件	Small Thread Tube Assembly	1
10	85113019	小过线管塞	Small Thread Tube Plug	6
11	85112034	过线管卡簧	Thread Tube Circlip	1
12	85112035	固定板	Reinforcing Plate	1
13	1851NS11015	面线导线支架板安装螺钉	Screw 3/16x32	1
14	305062	面线松线器座	Thread Tension Bracket Base	1
15	8511204100	夹线器组件(前)	Thread Tension Regulator(front)	1
16	8511204500	夹线器组件(中)	Thread Tension Regulator(mid)	1
17	8511204700	夹线器组件(后)	Thread Tension Regulator(back)	1
18	85112049	张力缓线勾	Tension Release Lever	1
19	1851NS11016	张力缓线勾固定螺钉	Screw 11/64x40	1
20	185128003	针距调节辅助垫片	Washer	2
21	85112050	过线片	Thread Guide	1
22	185112119	夹线器安装板	Thread Tension Regulator Fix Plate	1
23	18511310200	上夹线器组件	ThHread Tension Regulator Assy.	3
24	1851NS11024	过线片固定螺钉	Screw 9/64x40	1
25	1851NS11008	针杆连接轴紧固螺钉	Screw 9/64x40	1



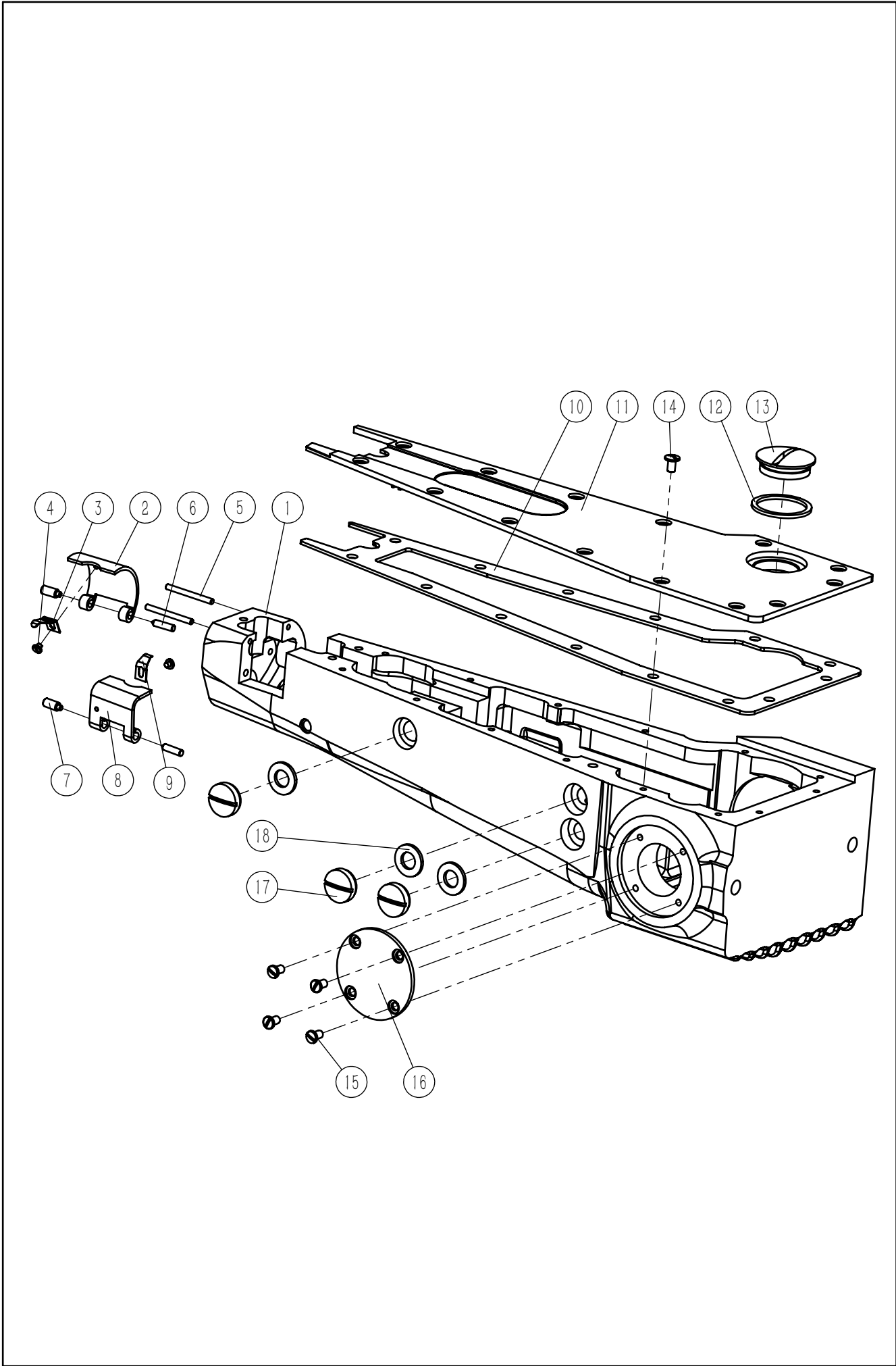
八、过线部分(2)——Threading parts(2)

序号 NO.	公司件号 Part NO.	名称	Description	数量 Number
1	201S11037	S099螺钉	Screw 15/64x28	1
2	85109011	弯针导线器支架	Looper Thread Guide Holder	1
3	85113003	过线器	Looper Thread Guide	1
4	85113015	底线过线管	Looper Thread Tube	1
5	85112022	挑线分线座	Thread take-up Splitter Base	1
6	40626015	打线凸轮盖销	Pin Of Thread Cam Cover	1
7	185112001	挑线分线板	Thread take-up Splitter Plate	1
8	85113002	挑线分线器	Thread take-up Splitter	1
9	185128003	针距调节辅助垫片	Washer	2
10	1851NS11011	挑线分线器螺钉	Screw 9/64x40	6
11	209S11007	辅助爪螺钉	Screw 3/32x56	2
12	85113005	导线钢丝	Thread Guider Steel Wire	1
13	40613016	导线架	Thread Guider	1
14	85113006	过线钢丝	Thread Guider(right)	1
15	1851NS11009	挑线过线板螺钉	Screw 9/64x40	2
16	1851NS11013	卡簧卡位螺钉	Screw 11/64x40	1
17	8511202300	小夹线器固定板组件	Tension Assembly	1
18	S02068	十字槽沉头螺钉M4	Screw M4	2
19	1851NS11003	针距调节辅助螺钉	Screw	1
20	140613002	底线导线板	Thread Guider Rack	1
21	1851NS15001	压杆下套螺钉	Screw 15/64x28	1
22	930200094	打线凸轮盖	Cover of Thread Cam	1
23	85129001	卡簧	Circlip	1
24	101S11019	推板簧螺钉	Screw 3/32x56	1
25	140612026	底线转向导板	Looper Thread Turning Guide	1



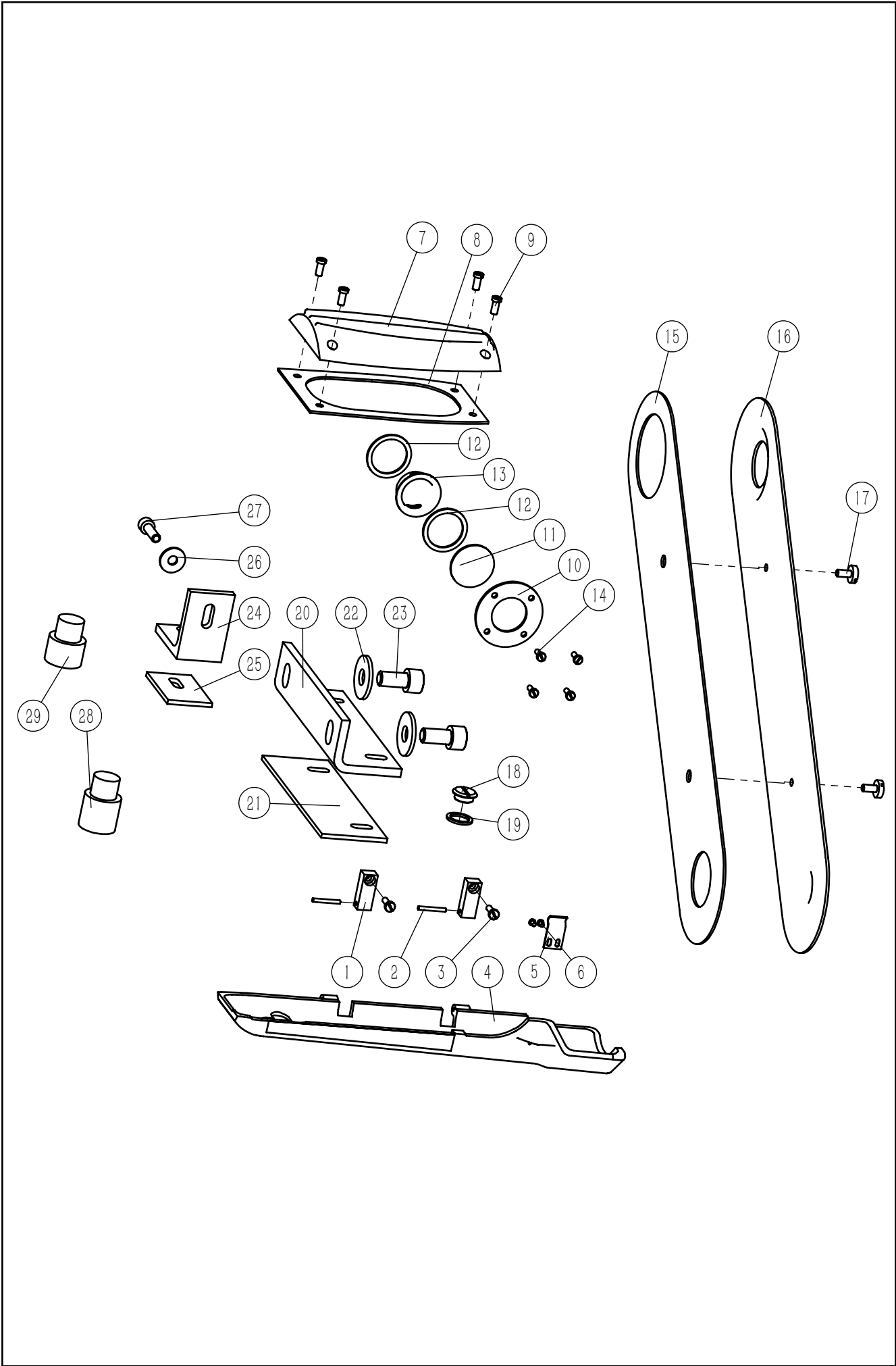
九、油箱部件——Oil tank parts

序号 NO.	公司件号 Part NO.	名称	Description	数量 Number
1	930200003	油箱	Oil Reservior	1
2	85122006	油箱垫片	Oil Reservior Gasket	1
3	85112063	过滤网	Oil Reservior Fliter	1
4	85112064	过滤网垫片	Oil Reservior Fliter Gasket	1
5	S05402	内六角螺钉 M3	Screw M3	3
6	85112065	油窗垫片	Gasket	2
7	85112066	油量刻度片	Oil Reminder Disc	1
8	85111002	油窗	Oil Window	1
9	85112067	油窗固定板	Oil Window Retainer	1
10	1851NS11010	滑块座固定螺钉	Screw 11/64x40	2
11	185122004	排油塞处O型圈	O Ring	1
12	851S11042	排油塞	Oil Drain Plug	1
13	101S11016	螺钉	Screw 3/16x28	21



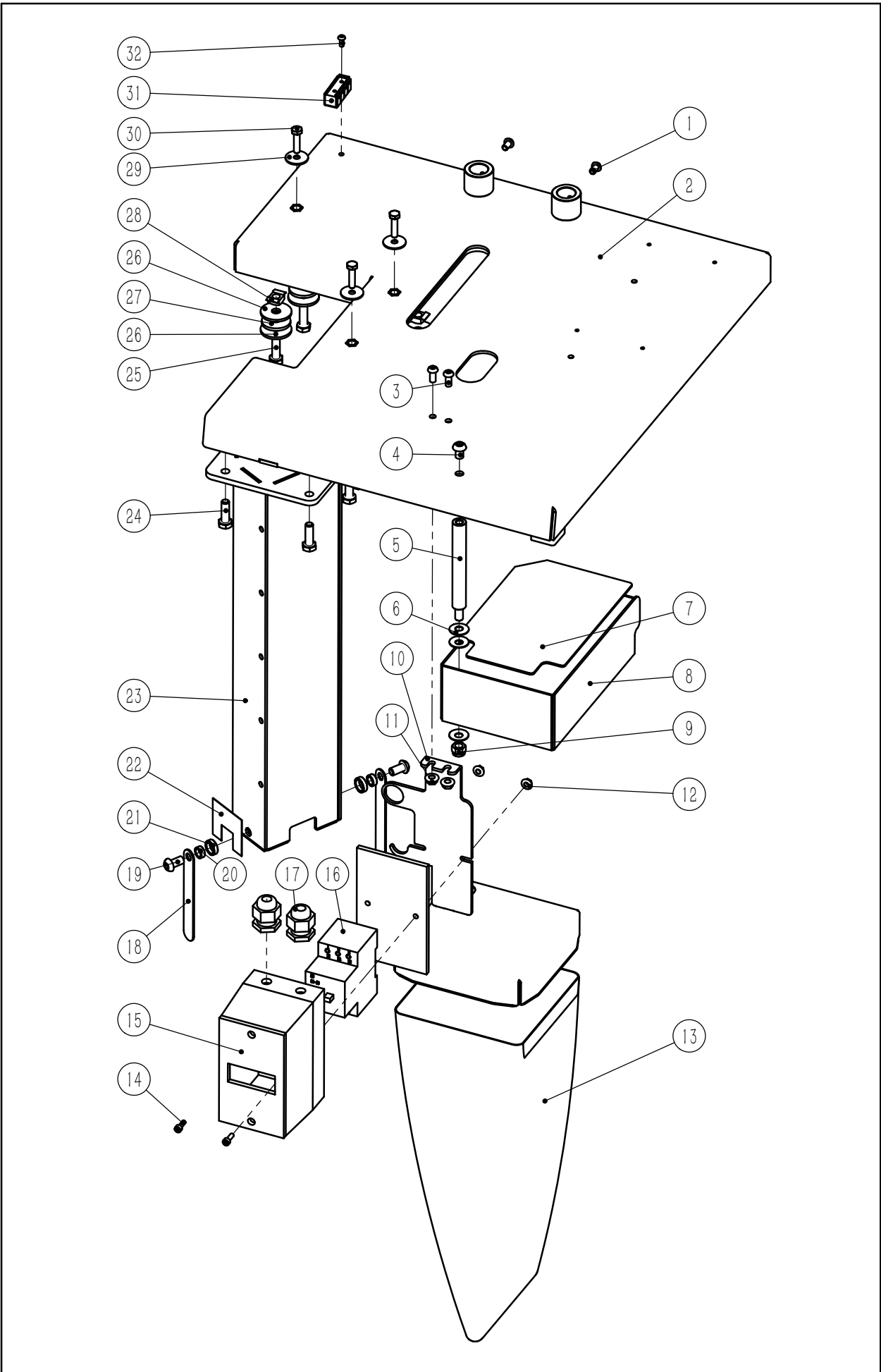
十、机壳附件(1)——Attachment (1)

序号 NO.	公司件号 Part NO.	名称	Description	数量 Number
1	930200007	机壳组装	Lower Shell	1
2	85112052	盖板(右)	Looper Gate(right)	1
3	85112053	盖板卡簧(右)	Looper Gate Circlip(right)	1
4	1851NS11017	盖板卡簧固定螺钉	Screw 3/32x56	2
5	85126010	盖板定位销	Cover Set Pin	2
6	185126001	盖板固定销	Postion Pin	2
7	851S15009	铰链螺栓(右)	Hinge Bolt	2
8	85112054	盖板(左)	Looper Gate(left)	1
9	85112055	盖板卡簧(左)	Looper Gate Circlip(left)	1
10	85122003	下仓盖垫片	Gasket	1
11	8511205600	下仓盖	Front Feed Arm Cap	1
12	185128001	下仓盖大螺钉垫片	Gasket	1
13	1851NS11026	下仓盖大螺钉	Screw	1
14	1851NS11027	下仓盖固定螺钉	Screw 9/64x40	14
15	1851NS11014	大过线管紧固螺钉	Screw 9/64x40	4
16	185112005	下轴前盖	Lower Shaft Side Cover	1
17	851S11049	离合架销盖	Cover	3
18	85122001	离合架销盖垫圈	Gasket	3



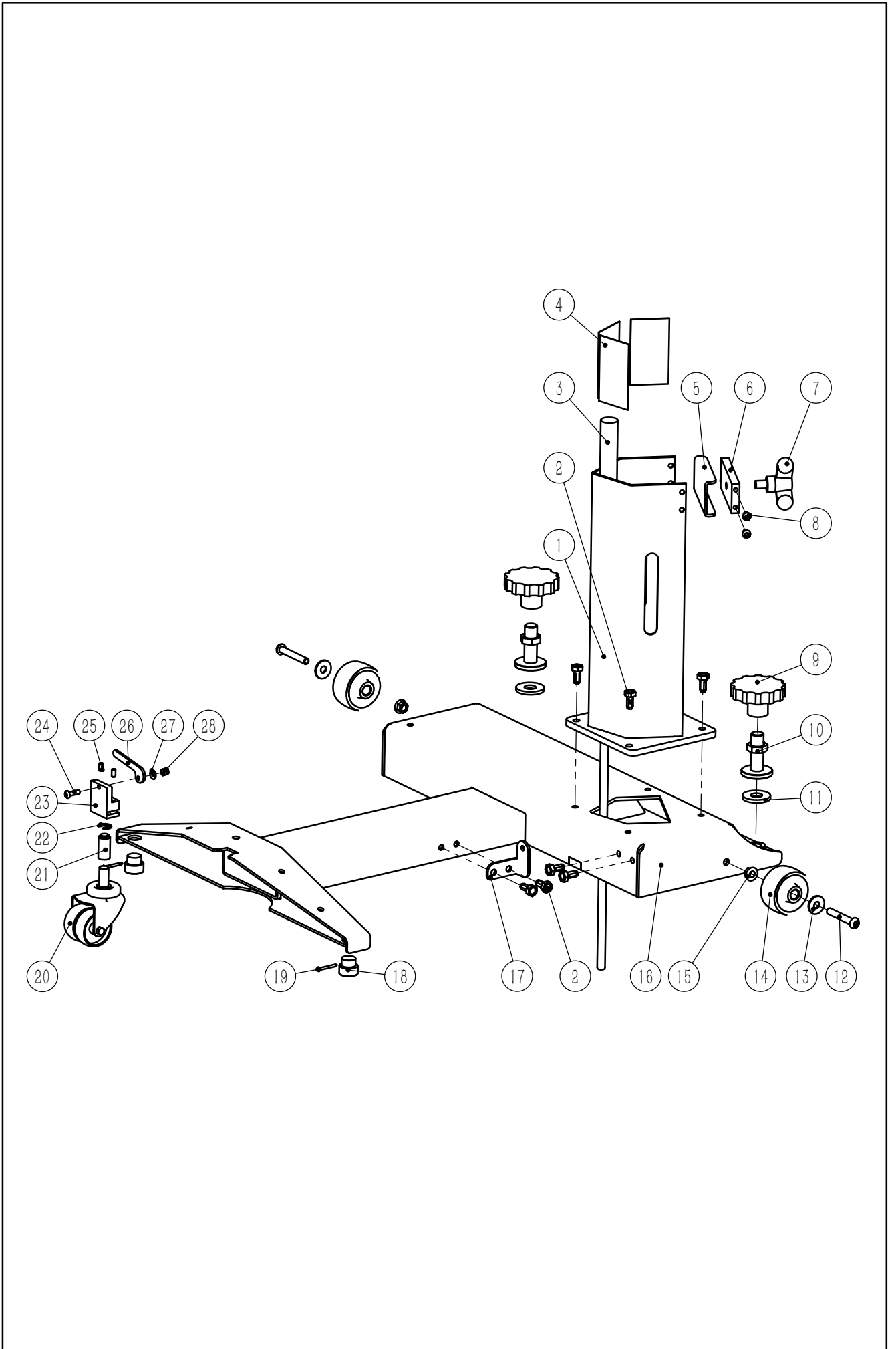
十一、机壳附件(2)——Attachment (2)

序号 NO.	公司件号 Part NO.	名称	Description	数量 Number
1	85109013	转动架	Thread Guide Hinge	2
2	85126011	转动架销	Pin	2
3	1851NS11018	底线外盖固定螺钉	Screw 9/64x40	2
4	305064	底线外盖	Front Cover	1
5	85112059	底线外盖卡簧	Front Cover Circlip	1
6	1851NS11005	滑块盖固定螺钉	Screw 3/32x56	2
7	305065	上盖板	Top Cover	1
8	85122004	上盖板垫片	Gasket	1
9	1851NS11006	上盖板固定螺钉	Screw 11/64x40	4
10	85112061	油窗盖板	Oil Window Cover	1
11	85111001	油窗玻璃板	Oil Window Glass	1
12	85122005	油窗垫圈	Gasket	2
13	930200255	过油盖(喷漆)	Oil Window Body	1
14	207S11035	螺钉SM1/8"x44	Screw 1/8x44	4
15	85128008	带轮箱盖垫片	Gasket	1
16	305063	带轮箱盖	Belt Box Cover	1
17	114S11003	螺钉 3/16-28 L=10	Screw 3/16x32	2
18	851S11031	加油孔塞	Oil Inpouring Plug	1
19	185128002	加油孔塞垫圈	Gasket	1
20	930200071	长机壳固定板	Long Machine Fixing Plate	1
21	85122010	长机壳固定板垫片	Gasket	1
22	W01017	大垫圈 M10	Washer M10	2
23	S05409	内六角圆柱头螺钉	Screw M10	2
24	930200072	短机壳固定板	Short Machine Fixing Plate	1
25	85122009	短机壳固定板垫片	Bracket Pad	1
26	W04007	大垫圈 M6	Washer M6	1
27	S05033	内六角圆柱头螺钉	Screw M6	1
28	85122007	机壳垫块(长)	Machine Cushion(long)	1
29	85122008	机壳垫块(短)	Machine Cushion(short)	1



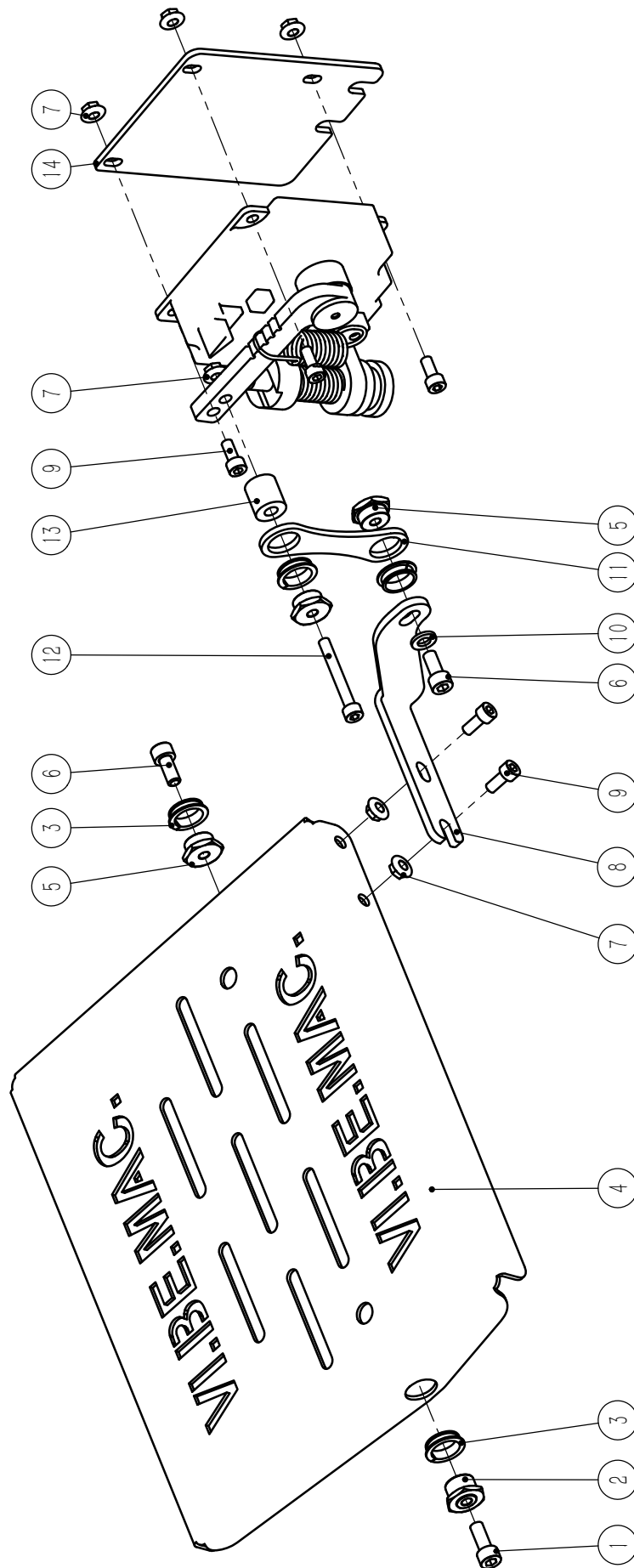
一、机架上部件 —— Parts on the rack

序号 NO.	公司件号 Part NO.	参考件号 Italy NO.	名称	Description	数量 Number
1	S17879	TCBEI M6X10	螺钉M6×10	Screw M6*10	2
2	930200197	TAV-2261-04	支撑面组件	Support table assy.	1
3	701S15005	TCBEI M6X14	螺钉M6×14	Screw M6*14	2
4	701S15002	TCBEI M8X12	螺钉M8×12	Screw M8*12	1
5	185202028	007-107	收纳盒安装轴	Installation shaft	1
6	W06003	RM8B	蝶型弹垫d8.2	Dish spring d8.2	3
7	185223002	ST-C-067	防震海绵垫	Shockproof sponge pad	1
8	930200184	ST-C-019	零件收纳盒	Parts storage box	1
9	N08003	DM8A	螺母M8	Nut M8	1
10	930200198	ST-C-139	收纳袋安装架	Storage box mounting	1
11	N04004	DM6F	法兰螺母M6	Nut M6	2
12	N01050	DM4F	法兰螺母M4	Nut M4	2
13	185231007	V800-105	回收袋	Thread collect bag	1
14	S05426	TCEI M4X12	螺钉M4×12	Screw M4*12	2
15	185130113	INT-GEN-000B	电源开关安装盒	Power switch box	1
16	185130114	INT-GEN-000A	交流电动机起动机	A.C. motor starter	1
17	185230005	INT-GEN-000C	防水接头M25×1.5	Waterproof connector	2
18	930200196	ST-C-141	防护条	Guard strip	2
19	701S15009	TCBEI M8X16	螺钉M8×16	Screw M8*16	2
20	185103101	261-748B	防护条内挡圈	Inner ring	2
21	185103102	261/748A	防护条外挡圈	Outer ring	2
22	185144108	ST-C-150	支柱塑料片	Plastic sheet of prop	1
23	185132102	ST-C-110A	上支柱	Upper prop	1
24	L02109	TE M8X25	螺栓M8×25	Nut M8*25	4
25	L02150	TE M8X35	螺栓M8×35	Bolt M8*35	3
26	185228009	RM8X32	自制垫片M8×32	Gasket M8*32	6
27	185222008	3022-134A	缓冲垫圈	Cushion washer	3
28	1851NS16101	DM8G	卡式螺母M8	Nut M8	3
29	185228011	RM6X24	自制垫片M6×24	Gasket M6*24	3
30	L02155	TE M6X25	螺栓M6×25	Bolt M6*25	3
31	185130127	MAMMUT	端子条MK3/4	Terminal strip	1
32	S17023	TCBEI M4X10	螺钉M4×10	Screw M4*10	1



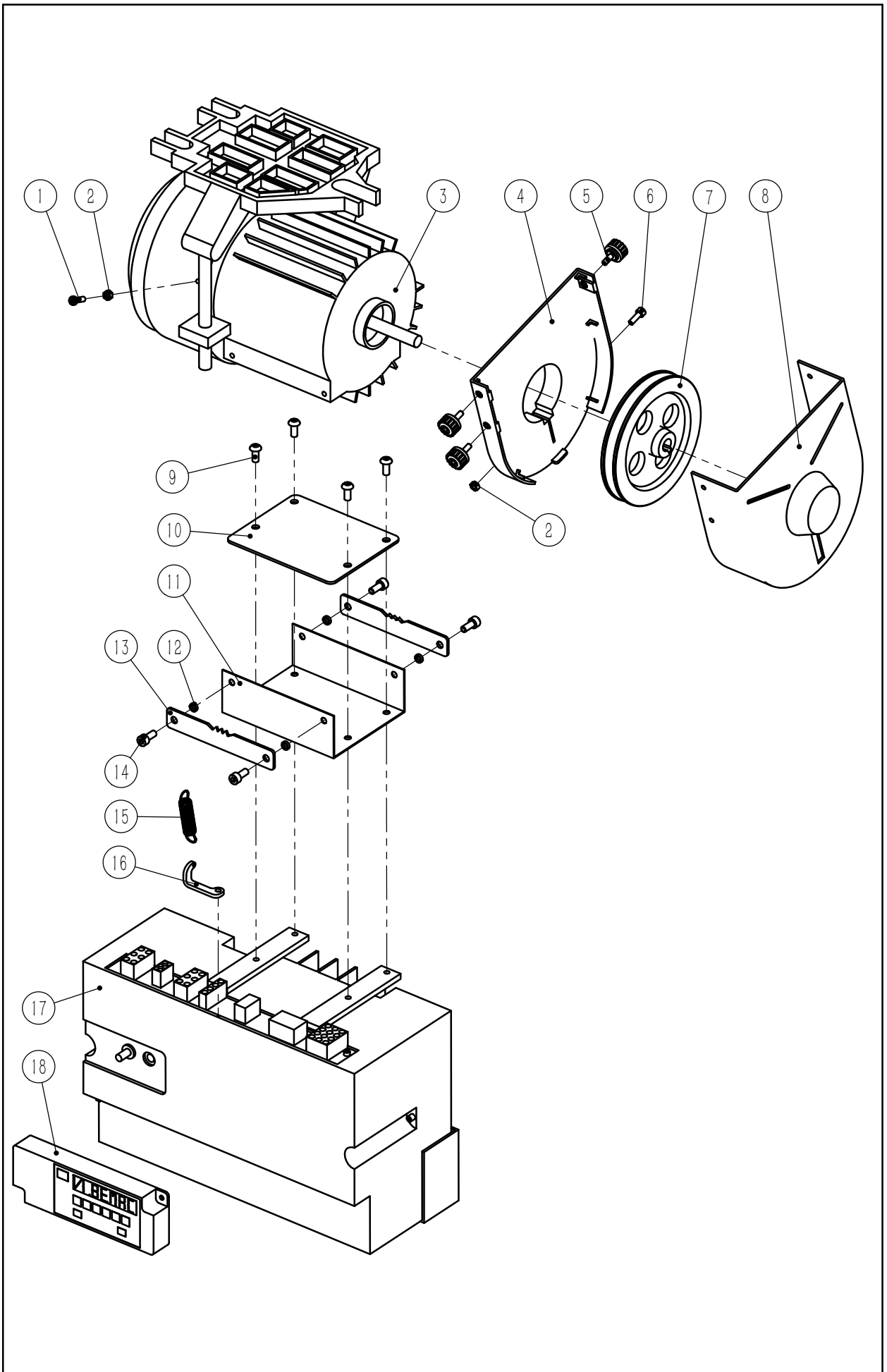
一、机架下部件(01) —— Under rack parts (01)

序号 NO.	公司件号 Part NO.	参考件号 Italy NO.	名称	Description	数量 Number
1	18513210300	ST-C-115B	下支柱	Lower Prop	1
2	1851NS12101	TE M8X15AFOF	螺栓M8×15	Bolt M8*15	8
3	185120101	MOLL-002	机架液压助力缸	Hydraulic cylinder	1
4	185144108	ST-C-150	支柱塑料片	Prop plastic sheet	3
5	185132104	ST-C-143	上支柱压紧板	Pressing plate	1
6	185109101	ST-C-142	上支柱压紧板支撑块	Support block	1
7	185144104	GF70PM10X15	机架升降调节手柄	Control handle	1
8	S17879	TCBEI M6X10	螺钉M6×10	Screw M6*10	4
9	1852NS13003	GMLB70M16	支脚调节手柄	Adjustment handle	2
10	18510912400		地脚金属组件	Foot medal assy.	2
11	185122102	3022-134B	地脚橡胶垫	Foot rubber gasket	2
12	S17891	TCBEI M8X55	螺钉M8×55	Screw M8*55	2
13	W01022	RM8X24	M8垫片	M8 gasket	2
14	185231006	RON-G-060	滚轮	Roller	2
15	N04013	DM8F	法兰螺母M8	Flange nut M8	2
16	930200188	ST-C-BASE-04	底部安装架	Bottom mounting rack	1
17	185112103	2262-080	脚踏支撑角件	Pedal support	1
18	185122101	1650/986	止动凸型橡胶柱	Rubber pillar	2
19	S23008	VL M3X30S	螺钉ST2.9×30	Screw ST2.9*30	2
20	185231009	360M12-0G050	万向轮	Universal wheel	1
21	185102101	ST-C-130	万向脚轮螺纹套	Wheel threaded bush	1
22	70508002	SEG8/ER	开口挡圈8	Open ring washer	1
23	185109102	ST-C-132	脚轮高度限位块	Wheel height blocker	1
24	S17888	TCBEI M5X18	螺钉M5×18	Screw M5*18	1
25	S09009	STEI M5X10G	螺钉M5×10	Screw M5*10	2
26	185110101	ST-C-134	脚轮高度调节杆	Wheel height lever	1
27	W06017	RM5B	碟形弹垫M5	Belleville spring	1
28	N08010	DM5AR	螺母M5	Nut M5	1



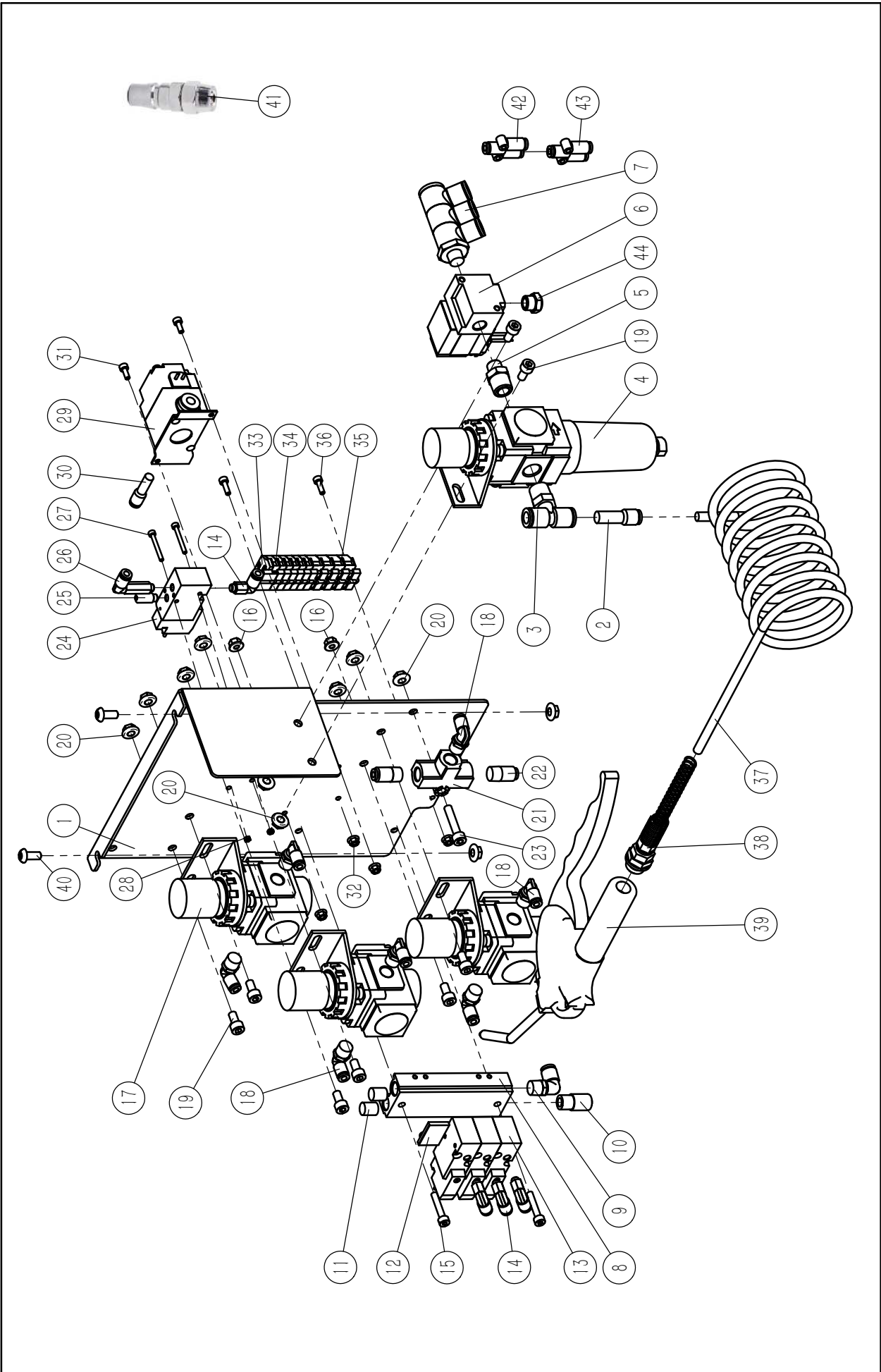
一、机架下部件(02) —— Under rack parts (02)

序号 NO.	公司件号 Part NO.	参考件号 Italy NO.	名称	Description	数量 Number
1	S05918	TCEI M6X16	螺钉M6×16	Screw M6*16	1
2	185102103	2262-077	六角铜制转轴长	Copper shaft (long)	1
3	185144103	MCM-14-03	塑料斜开口轴套	Plastic open casing	4
4	930200185	ST-C-10A	脚踏板	Pedal	1
5	185102104	2262-078	六角铜制转轴短	Copper shaft (short)	3
6	S05917	TCEI M6X14	螺钉M6×14	Screw M6*14	2
7	N04005	DM5F	法兰螺母 M5	Flange nut M5	6
8	930200186	ST-C-127	脚踏板连杆	Pedal connecting rod	1
9	S05337	TCEI M5X12	螺钉M5×12	Screw M5*12	5
10	W01003	RM6	M6垫片	M6 Washer	1
11	185105101	2262-084	脚踏开关连杆	Pedal switch rod	1
12	S05186	TCEI M5X40	螺钉M5×40	Screw M5*40	1
13	185103105	ST-C-135	脚踏开关连杆上端隔套	Rod upper spacer	1
14	930200187	ST-C-126	脚踏开关安装板	Switch mounting plate	1



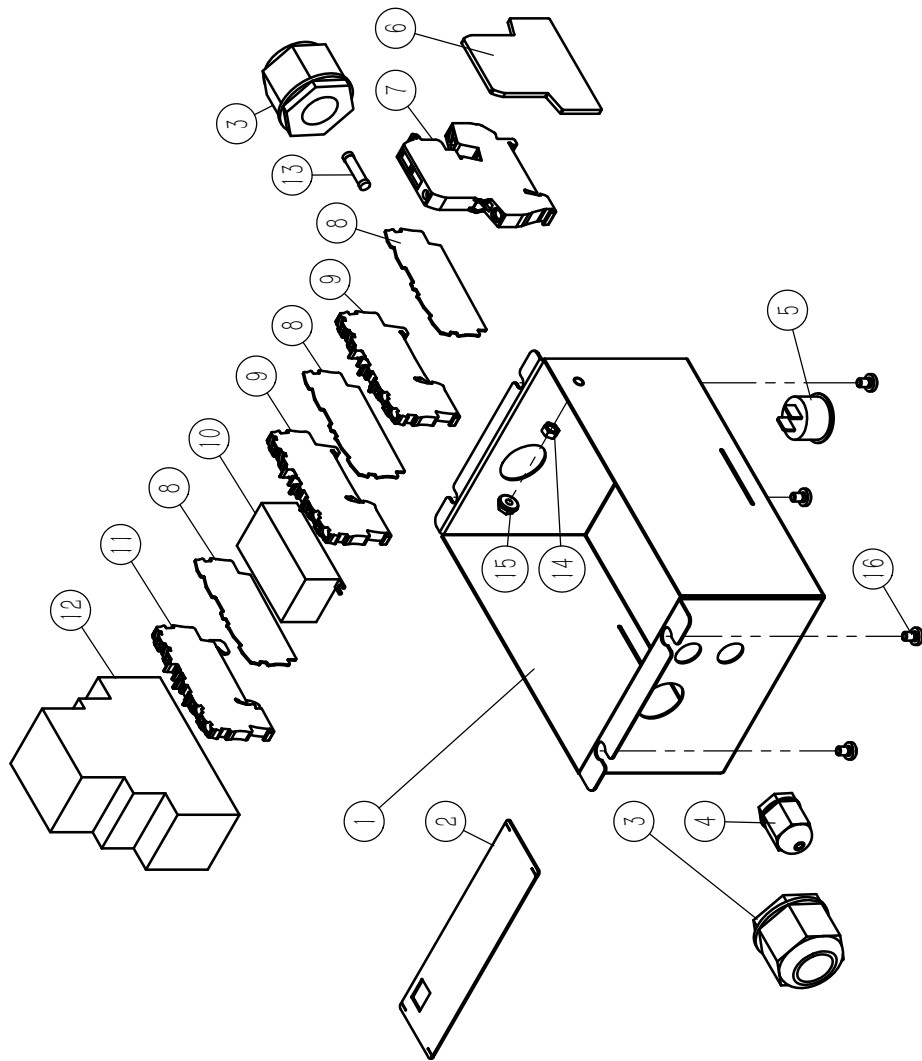
二、驱动部件 —— Drive parts

序号 NO.	公司件号 Part NO.	参考件号 Italy NO.	名称	Description	数量 Number
1	1852NS30005	VTS-028	螺钉M4×14	Screw M4*14	1
2	701S16015	DM4	六角螺母M4	Nut M4	2
3	185130208	XL-G754	三菱电机XLG75420Y	Mitsubishi motor	1
4	18524401200	K14M72339301	带轮防护罩1	Pully protect cover1	1
5	185130106	GMZP15M410	螺钉M4×10	Screw M4*10	3
6	S05426	TCEI M4X12	柱头M4×12	Screw M4*12	1
7	185130105	MOP106	电机端V带轮	Motor side V pulley	1
8	185244013	K14M72339401	带轮防护罩2	Pully protect cover 2	1
9	701S15011	TCBEI M5X12	螺钉M5×12	Screw M5*12	8
10	185212113	ST-C-100	减震垫片	gasket	1
11	185222009	ST-C-099	橡胶缓冲垫片	Rubber cushion gasket	1
12	185203032	ST-C-099A	铜套	Copper bush	4
13	185212065	ST-C-101	控制器连接板	Connection board	2
14	S05337	TCEI M5X12	螺钉M5×12	Screw M5*12	4
15	185227014	M1X10X45.4	减震弹簧	Cushion spring	1
16	185212066	261/746	弹簧连接座	Connection base	1
17	185130209	XCGMFY2007	三菱控制器XCGMFY2007	Mitsubishi controller	1
18	185130210	XC-G10S	三菱操作面板	Operation panel	1



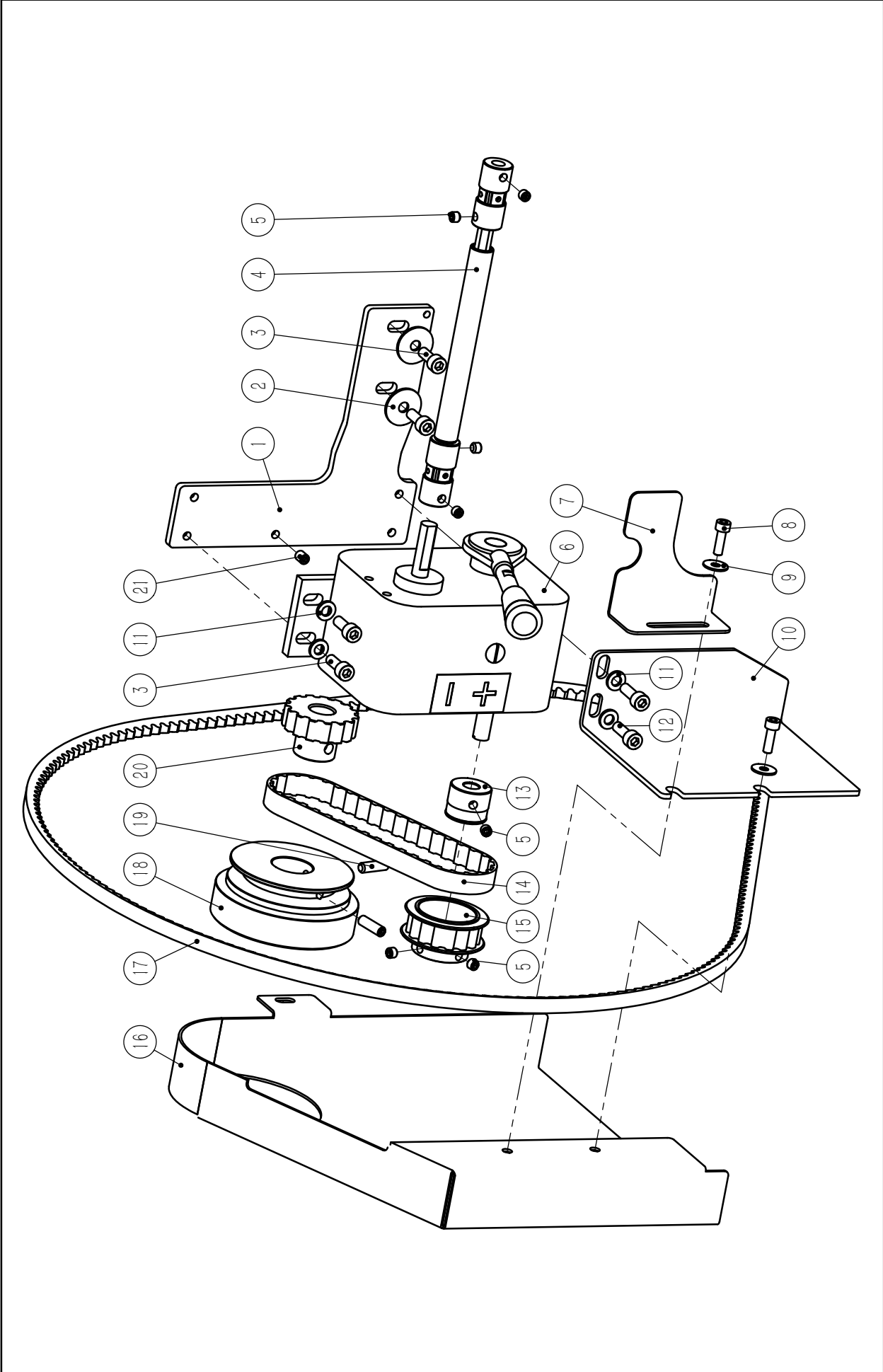
三、气源部件 —— Air source parts

序号 NO.	公司件号 Part NO.	参考件号 Italy NO.	名称	Description	数量 Number
1	930200199		气源组件安装板	Mounting board	1
2	185145120	KQR06-08	插管减径接管	Reducing connector	1
3	185145119		双管T型接头	Double tube T joint	1
4	185145121		过滤减压阀	Filter regulator	1
5	185145122		双头外丝接头	Outer thread joint	1
6	185145123		3通电磁阀	3-way solenoid valve	1
7	185145124		万向弯头	Universal elbow	1
8	185145125		4位单通汇流板	4-bit bus bar	1
9	18045017		接头	Connector	1
10	42130092		消声器	Silencer	1
11	407S12002	TTE8-G	汇流板密封螺钉	Screw	2
12	185145127		盖板	Top cover	1
13	185145126		3通电磁阀	3-way solenoid valve	3
14	42136001	KQ2L04-M5	快换弯头	Connector	4
15	S05928		螺钉M4×22	Screw M4*22	2
16	N01050	DM4F	法兰螺母M4	Flange nut M4	2
17	185145130		减压阀	pressure regulator	3
18	185145132		弯头	elbow	7
19	S05003		螺钉M5×10	Screw M5*10	8
20	N04005	DM5F	法兰螺母M5	Flange nut M5	11
21	185145134		梭阀	Shuttle valve	1
22	185145135		直通接头	Straight connector	2
23	S05860		螺钉M5×25	Screw M5*25	1
24	185145133		3通电磁阀	3-way solenoid valve	1
25	48145024		消声器M5	Silencer M5	1
26	185145117	KQ2W04-M5A	加长弯头	Extended elbow	1
27	S05972		螺钉M2.5×20	Screw M2.5*20	2
28	N01018		六角螺母M2.5	Nut M2.5	2
29	185145128		2通电磁阀	2-way solenoid valve	1
30	185145129		插管减径接管	Reducing connector	1
31	S05403	TCEI M3*8	螺钉M3×8	Screw M3*8	2
32	N04012	DM3F	法兰螺母M3	Flange nut M3	4
33	185230009	MORS-016	端子排盖板	Terminal array cover	1
34	185230012	MORS-015	灰色端子排	Grey terminal array	6
35	185230006	MORS-013	橙色端子排	Orange terminal array	4
36	S05145	TCEI M3*10	螺钉M3×10	Screw M3*10	2
37	185245047	TRS64	螺旋气管(3mΦ6)	Spiral trachea(3mΦ6)	1
38	40736018	50 6/4-1/4	螺纹直通	Threaded tube	1
39	185245067	R0715	气枪	Air gun	1
40	701S15011		螺钉M5×12	Screw M5*12	2
41	40736001		螺纹套管接头	Threaded sleeve joint	1
42	185245113		Y型接头	Y shape connector	1
43	185245042		Y型接头Φ4	Y shape connector Φ4	1
44	40728003		消声器	Silencer	1



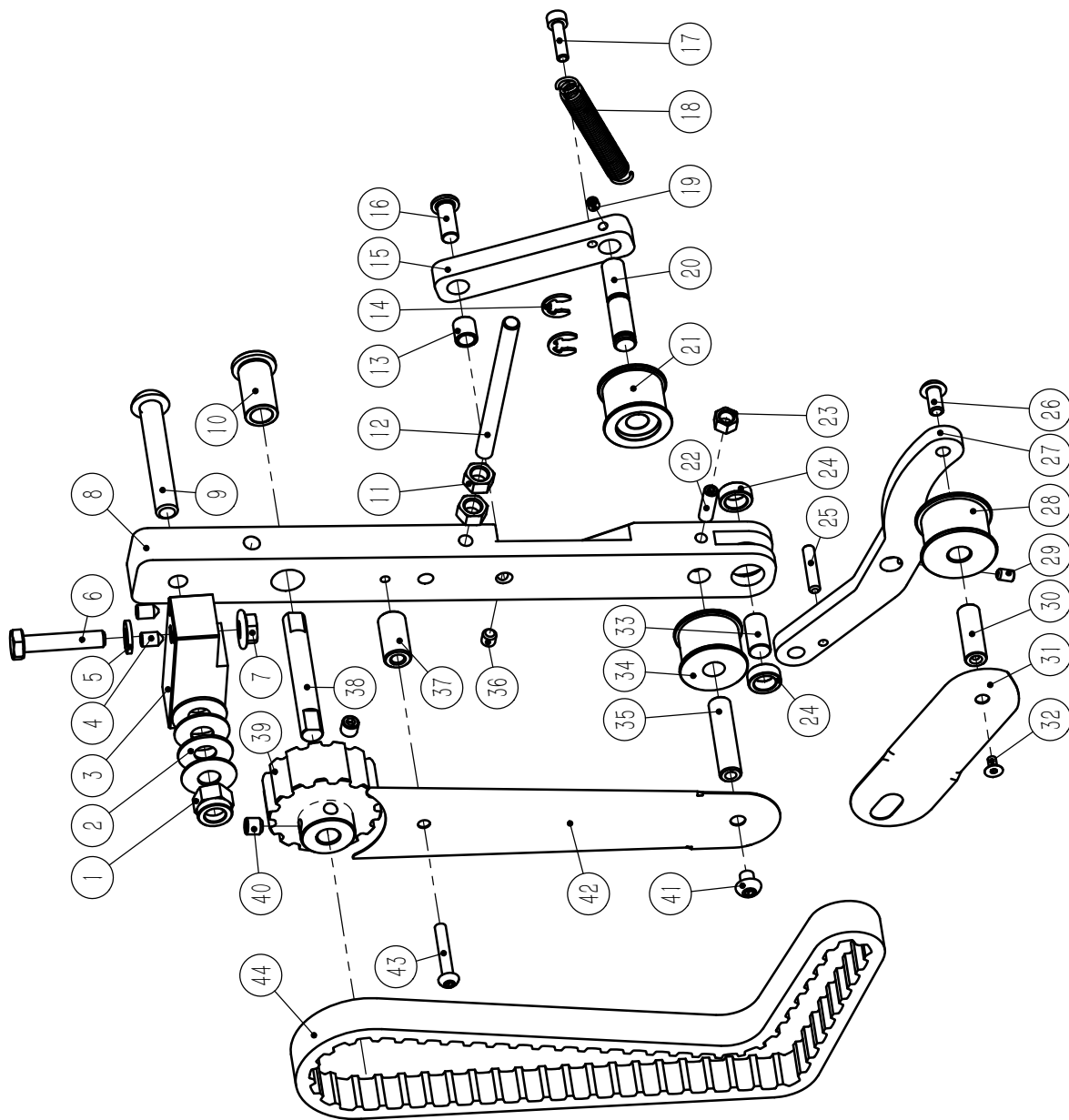
四、灯控箱部件 —— Light Control Box parts

序号 NO.	公司件号 Part NO.	参考件号 Italy NO.	名称	Description	数量 Number
1	930200183	ST-C-108	灯控箱罩壳	Box cover	1
2	185212087	ST-C-107	端子排安装片	Terminal array piece	1
3	185230037	BS-04PG16	防水接头PG16	Connector PG16	2
4	185230038	BS-01PG7	防水接头PG7	Connector PG7	1
5	185230031	SPST-10A	灯控箱开关	Light control switch	1
6	185230042	MORS-007	灰色端子隔板	Gray partition	1
7	185230044	MORS-005	接线端子	Terminals	1
8	185230029	MORS-004	橙色端子隔板	Orange partition	3
9	185230020	MORS-002	4线接线端子	Common terminal block	2
10	185230021	DRIVER-LED1	LED驱动电源	LED drive power	1
11	185230019	MORS-001	4线接地端子	Earthing terminal	1
12	18523008300	ELE-0147D	过压过流保护板组件	Overvoltage protector	1
-	185211001		过压过流保护壳上盖	Upper cover	1
-	185211002		过压过流保护壳底座	base	1
-	185230022		过压过流保护电路板	Circuit board	1
-	185230027		保险丝座	Fuse holder	2
-	185230028		压敏电阻431KD20	Varistor 431kd20	2
-	185230033		3芯插座GMSTBA2.5/3-G	3-core socket	1
-	185230035		4芯插座GMSTBA2.5/4-G	4-core socket	1
-	185230096		保险丝12A 6.3×32	Fuse 6.3*32 T12A	2
13	185230024	FUS5X20T05A	保险丝 5×20 T0.5A	Fuse 5*20 T0.5A	1
14	701S16015	DM4	1型六角螺母M4	Nut M4	1
15	N08009	DM4AR	螺母M4	Nut M4	1
16	1852NS30011	TC M4X6AFO	螺钉M4×6	Screw M4*6	4



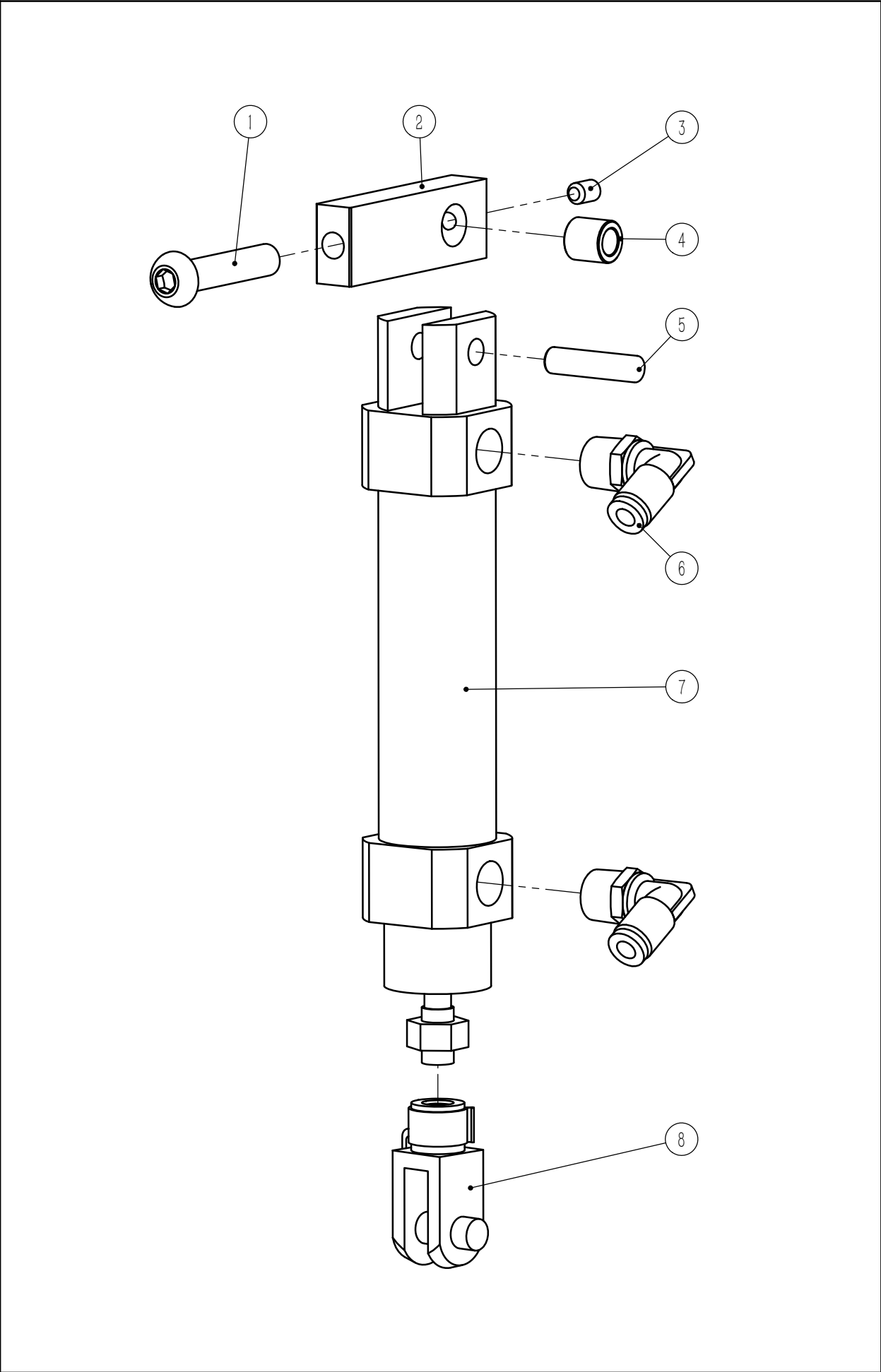
五、拖布部件(01) —— Drag cloth parts(01)

序号 NO.	公司件号 Part NO.	参考件号 Italy NO.	名称	Description	数量 Number
1	930200194	TA3922	带轮箱安装板	Mounting plate	1
2	185228011	RM6X24	自制垫片	Gasket	2
3	S05918	TCEI M6X16	螺钉M6×16	Screw M6*16	4
4	18510212000		万向传动连杆组件	Link assy.	1
5	S09041	STEI M6X5G	螺钉M6×5	Screw M6*5	7
6	185125101	E2ID/2262	变速箱	Gearbox	1
7	930200195	261/567	变速箱档位限位板	Gearbox limit plate	1
8	S05339	TCEI M5X16	螺钉M5×16	Screw M5*16	2
9	W04006	RM5X15	M5大垫圈	M5 washer	2
10	930200193	TA3923B	防护罩固定板	Fix plate	1
11	W01003	RM6	M6垫片	M6 gasket	4
12	S05030	TCEI M6X18	螺钉M6×18	Screw M6*18	2
13	185102108	261/022	变速箱带轮固定套	Gearbox pulley fixing	1
14	185135104	150L050	变速箱同步带	Synchronous belt	1
15	18513510300	261/566	变速箱带轮组件	Gearbox pulley assy.	1
16	305066	TA3923A	手轮防护罩组件	Handwheel cover assy.	1
17	185135106	ZX43	手轮端齿形同步带	Tooth belt	1
18	185102109	225CG80C	手轮	Handwheel	1
19	S09104	STEI M6X20G	螺钉M6×20	Screw M6*20	2
20	185135105	261/565A	手轮端带轮	Handwheel side pulley	1
21	S09007	STEI M6X8G	螺钉M6×8	Screw M6*8	1



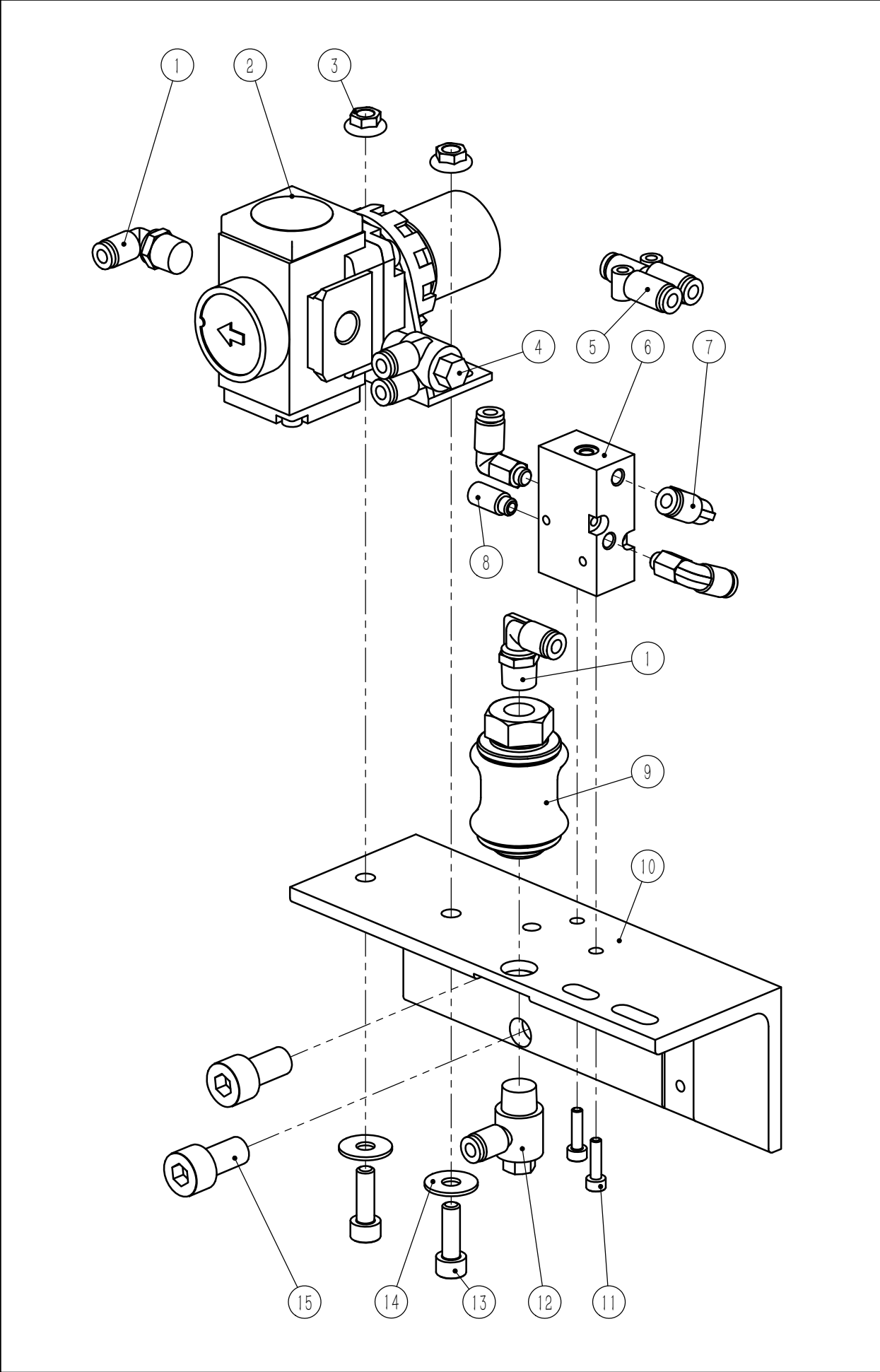
五、拖布部件(02) —— Drag cloth parts(02)

序号 NO.	公司件号 Part NO.	参考件号 Italy NO.	名称	Description	数量 Number
1	N08003	DM8A	螺母M8	Nut M8	1
2	W06003	RM8B	蝶型弹垫	Disc spring	4
3	185109106	261-015	拖布装置固定块	Pulley fixing block	1
4	S12034	STEI M5X8GP	螺钉M5×8	Screw M5*8	2
5	W01003	RM6	M6垫片	M6 gasket	1
6	L02123	TE M6X30	螺栓M6×30	Bolt M6*30	1
7	N04004	DM6F	法兰螺母M6	Flange nut M6	1
8	185109104	261-043D	拖布安装架	Pulley mounting rack	1
9	S17893	TCBEI M8X50	螺钉M8×50	Screw M8*50	1
10	185103108	BOC8X12X16C	拖布万向联轴器铜套	Coupling bush	1
11	N01007	DM6	螺母M6	Nut M6	2
12	1851NS10101	261-047	拖布螺杆M6×75	Long screw M6*75	1
13	185103113	PAP0608P10	张紧轮连杆铜套	Rod bush	1
14	H05009	SEEGER-D8	开口挡圈7	Opened ring washer 7	2
15	185105104	261-026A	拖布张紧轮连杆	Tensioner link rod	1
16	185126105	261/025	张紧轮连杆固定销	Link rod fixing pin	1
17	S05427	TCEI M4X16	螺钉M4×16	Screw M4*16	1
18	185127101	M1. 2X8. 4X60	同步带张紧弹簧	Belt tension spring	1
19	S09129	STEI M4X4G	螺钉M4×4	Screw M4*4	1
20	185103114	261-044	拖布张紧轮支撑轴	Support shaft	1
21	185144107	261/507B	拖布张紧轮	Pulley tensioner	1
22	S09110	STEI M5X16G	螺钉M5×16	Screw M5*16	1
23	701S16016	DM5X5	螺母M5	Nut M5	1
24	185103110	BOC4, 5X8X12	下轮连杆铜套	Rod bush	2
25	S09139	STEI M4X20G	螺钉M4×20	Screw M4*20	1
26	701S15004	TCBEI M5x10	螺钉M5×10	Screw M5*10	1
27	185105103	261-510A	拖布下轮连杆	Lower wheel link rod	1
28	185144106	261-508C	拖布下轮	Lower wheel	1
29	S09027	STEI M4X6G	螺钉M4×6	Screw M4*6	1
30	185103112	261-505	拖布下轮支撑轴	Support shaft	1
31	185112112	261-039-TN	拖布下防护片	Protect piece	1
32	S02914	TSPEI M3X6	螺钉M3×6	Screw M3*6	1
33	185126103	M8X15SP	下轮连杆支撑轴	Support shaft	1
34	185144105	261-506	拖布中轮	Middle wheel	1
35	185126104	261-042	拖布中轮固定销	Mid-wheel fixing pin	1
36	S09131	STEI M5X5G	螺钉M5×5	Screw M5*5	1
37	185103111	261-034	拖布上护片隔套	Spacer	1
38	185126102	261/032	拖布带轮传动轴	Pulley drive shaft	1
39	185135101	261/509	拖布带轮	Pulley	1
40	S09101	STEI M6X6G	螺钉M6×6	Screw M6*6	2
41	S17880	TCBEI M5x6	螺钉M5×6	Screw M5*6	1
42	185112111	261-038	拖布上防护片	Upper guard chip	1
43	S17892	TCBEI M4X25	螺钉M4×25	Screw M4*25	1
44	185135102	261-036	拖布同步带	Synchronous belt	1



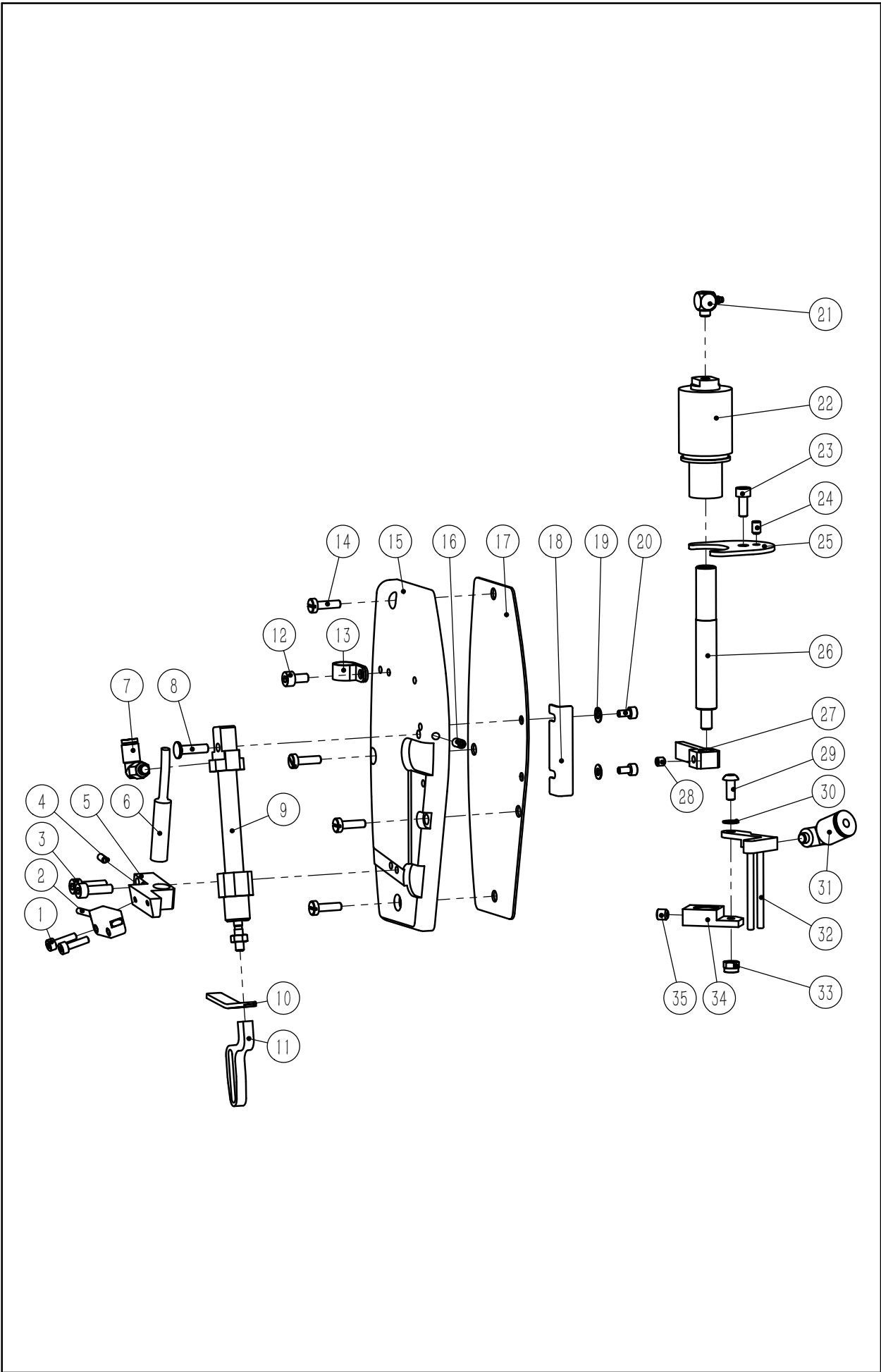
五、拖布部件(03) —— Drag cloth parts(03)

序号 NO.	公司件号 Part NO.	参考件号 Italy NO.	名称	Description	数量 Number
1	S17016	TCBEI M6X30	螺钉M6×30	Screw M6*30	1
2	185109105	261-043C	拖布气缸支撑块	Support block	1
3	S09027	STEI M4X6G	螺钉M4×6	Screw M4*6	1
4	185103107	BOC5X8X8	拖布气缸支撑铜套	Cylinder support bush	1
5	185126101	M5X20SP	拖布气缸固定销	Cylinder fixing pin	1
6	185145132	804 4 1/8	弯头(R1/8, Φ4)	ElbowΦ4-R1/8	2
7	185145138	22-35A	拖布气缸	Pulley cylinder	1
8	185245089	G6	接头GKM6-12	Joint	1



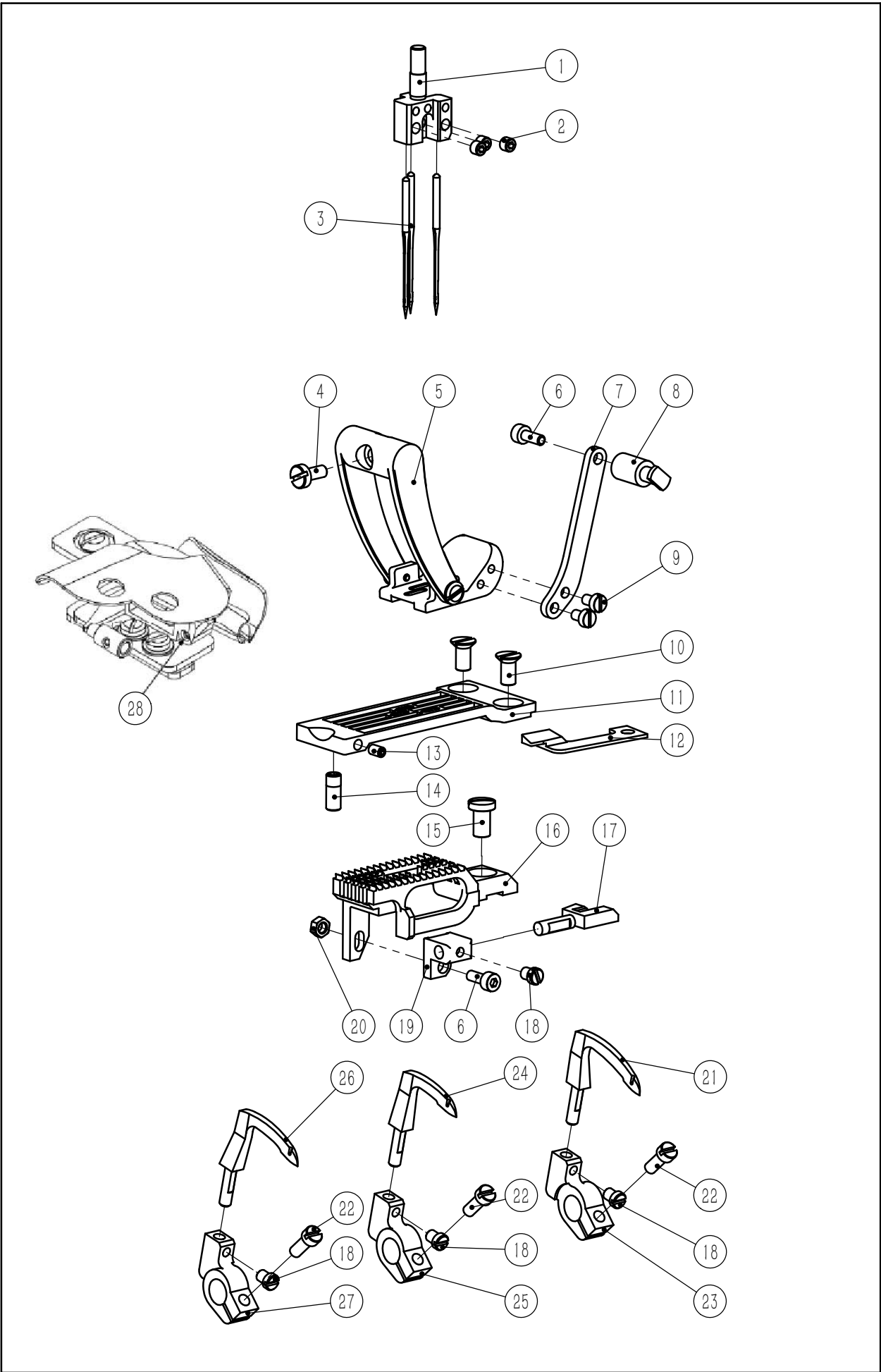
五、拖布部件(04) —— Drag cloth parts (04)

序号 NO.	公司件号 Part NO.	参考件号 Italy NO.	名称	Description	数量 Number
1	185145132		弯头(R1/8, Φ4)	Elbow (R1/8, Φ4)	2
2	185145130		减压阀	Pressure reducing	1
3	N04005	DM5F	法兰螺母 M5	Flange Nut M5	2
4	185145104	KQZ04-01S	双管万向弯头	Double pipe elbow	1
5	185245042	KQU04-00	Y型接头Φ4	Y type connector	1
6	185130115		加压电磁阀	Solenoid valve	1
7	42136001		快换弯头	Quick change elbow	3
8	48145024		消声器M5	Silencer M5	1
9	185145136		手动阀	Manual valve	1
10	185143102		支撑角件	Support casting	1
11	S05969	TCEI M3X12	螺钉M3×12	Screw M3*12	2
12	185245013	804 4 1/8	直角弯头	Right angle elbow	1
13	S05339	TCEI M5X16	螺钉M5×16	Screw M5*16	2
14	W04006	RM5X15	M5大垫圈	M5 Washer	2
15	S05919		螺钉M8×16	Screw M8*16	2



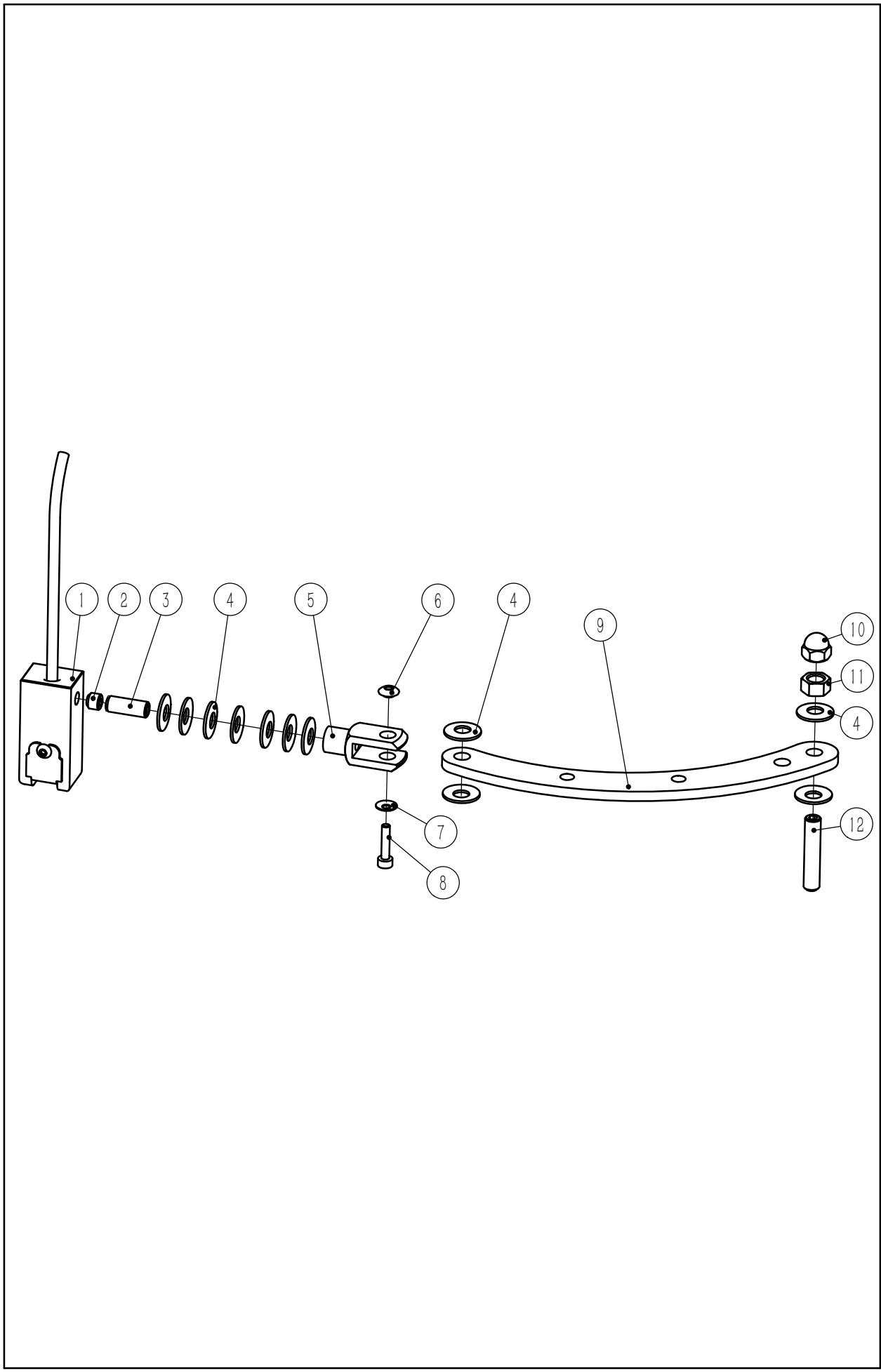
六、面板部件 —— Panel parts

序号 NO.	公司件号 Part NO.	参考件号 Italy NO.	名称	Description	数量 Number
1	S05969	TCEI M3X12	螺钉M3×12	Screw M3*12	2
2	185130101	RT-01A	光电传感器	Photoelectric sensor	1
3	S05926	TCEI M4X14	螺钉M4×14	Screw M4*14	2
4	S09126	STEI M3X5G	紧定螺钉M3×5	Screw M3*5	1
5	185109109	261-752	厚度传感器安装座	Sensor mounting base	1
6	185230058	SENS-NPNNC-01	常闭传感器	Sensor	1
7	42136001	KQ2L04-M5	快换弯头	Quick change elbow	1
8	185226003	3022-259	裤襠矫正爪销	Pin	1
9	185145114	8/25	面板单作用气缸	Cylinder	1
10	185112118	261/535A	厚度传感器感应片	Thickness sensor chip	1
11	185105105	261/535	压脚活动轨道	Move track	1
12	S05859	TCEI M4X8	螺钉M4×8	Screw M4*8	1
13	185231016	ELE-0167B	R型线夹	R shape clamp	1
14	1851NS11101	17140061	螺钉	Side cover screw	4
15	185101101	261/525A	机头面盖板	Side cover	1
16	S09147	STEI M4X8G	紧定螺钉M4×8	Screw M4*8	1
17	185122103	17143543	机头面盖板密封垫	Cover sealing gasket	1
18	185112117	261/524	机头面盖板挡板	Side cover baffle	1
19	W01002	RM3	平垫圈3	Flat washer 3	2
20	S05402	TCEI M3X6	螺钉M3×6	Screw M3*6	2
21	185245007	M-5ALU-4	倒勾式弯头	Barbed elbow	1
22	185145139	BRAK031	压脚气缸	Cylinder	1
23	S05925	TCEI M4X10	螺钉M4×10	Screw M4*10	1
24	S09027	STEI M4X6G	紧定螺钉M4×6	Screw M4*6	1
25	185109118	261-206	压脚气缸固定板	Cylinder fixing board	1
26	185102112	261-207	压脚气缸延长杆	Extension rod	1
27	185109117	261-247	压脚高度限位架	Height limit	1
28	S09129	STEI M4X4G	螺钉M4×4	Screw M4*4	1
29	S17023	TCBEI M4X10	螺钉M4×10	Screw M4*10	1
30	W06015	RM4B	碟形弹簧	Disc spring	1
31	41536009	AS1211F-M5-04	气管接头	Pipe connector	1
32	18510911000	261-234	针杆吹气组件	Air blowing assy.	1
33	N08009	DM4AR	螺母M4	Nut M4	1
34	185109112	261-234A	针杆吹气组件安装块	Air assy. fix block	1
35	S09131	STEI M5X5G	螺钉M5×5	Screw M5*5	1



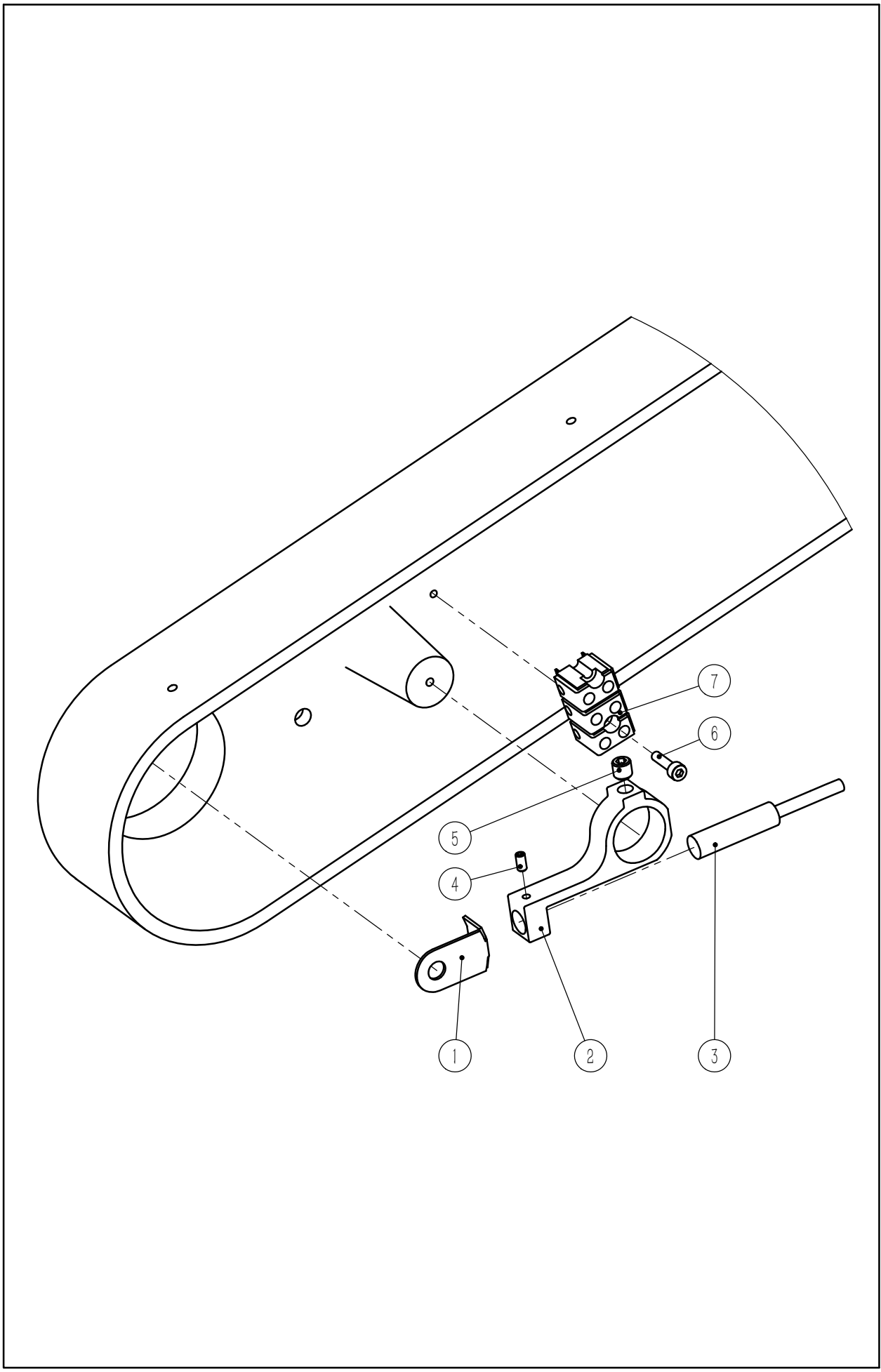
七、针位部件 —— Pin position parts

序号 NO.	公司件号 Part NO.	参考件号 Italy NO.	名称	Description	数量 Number
1	185134101	07181716	针夹头	Needle holder	1
2	1851NS10102	VTS-013	机针紧定螺钉	Needle tight screw	3
3	185117101	149X3 F120	机针	Needle	3
4	1851NS11104		压脚杆螺钉	Screw	1
5	18511610400		压脚组件(6.4MM)	Presser-foot(6.4mm)	1
6	S05924	TCEI M3X8	螺钉M3×8	Screw M3*8	2
7	185105106	261/526	压脚滑块连杆	Slider link	1
8	185102110	261/535B	压脚活动滑块	Presser-foot slider	1
9	S01150	VTS-005	螺钉M3×5	Screw M3*5	2
10	1851NS17101	17000691	针板后螺钉	Screw	2
11	185115101	07S13042001	针板	Needle plate	1
12	185109108	261/745	布料传感器反光板	Reflector	1
13	S09126	STEI M3X5G	螺钉M3×5	Screw M3*5	1
14	1851NS13101	VTS-014	固定针板前螺钉	Screw	1
15	1851NS11105		送布牙固定螺钉	Feed dog fixing screw	1
16	185114101	07S13045001	送布牙	Feed dog	1
17	185117102	07148875	护针	Needle guard	1
18	1851NS11102	VTS-031	护弯针螺钉	Looper guard screw	4
19	185109113	07148876	护针安装座	Needle guard mount	1
20	701S16014	DM3X3	螺母M3	Nut M3	1
21	185117105	07148871	弯针长	Looper (long)	1
22	1851NS11103	VTS-032	弯针座螺钉	Screw of looper base	3
23	185109116	07148874	弯针座长	Looper base (long)	1
24	185117104	07148870	弯针短	Looper (short)	1
25	185109115	07148872	弯针座短	Looper base (short)	1
26	185117103	07148869	弯针中	Looper (middle)	1
27	185109114	07148873	弯针座中	Looper base (middle)	1
28	185131104		普通卷边器H	Folder-H	1



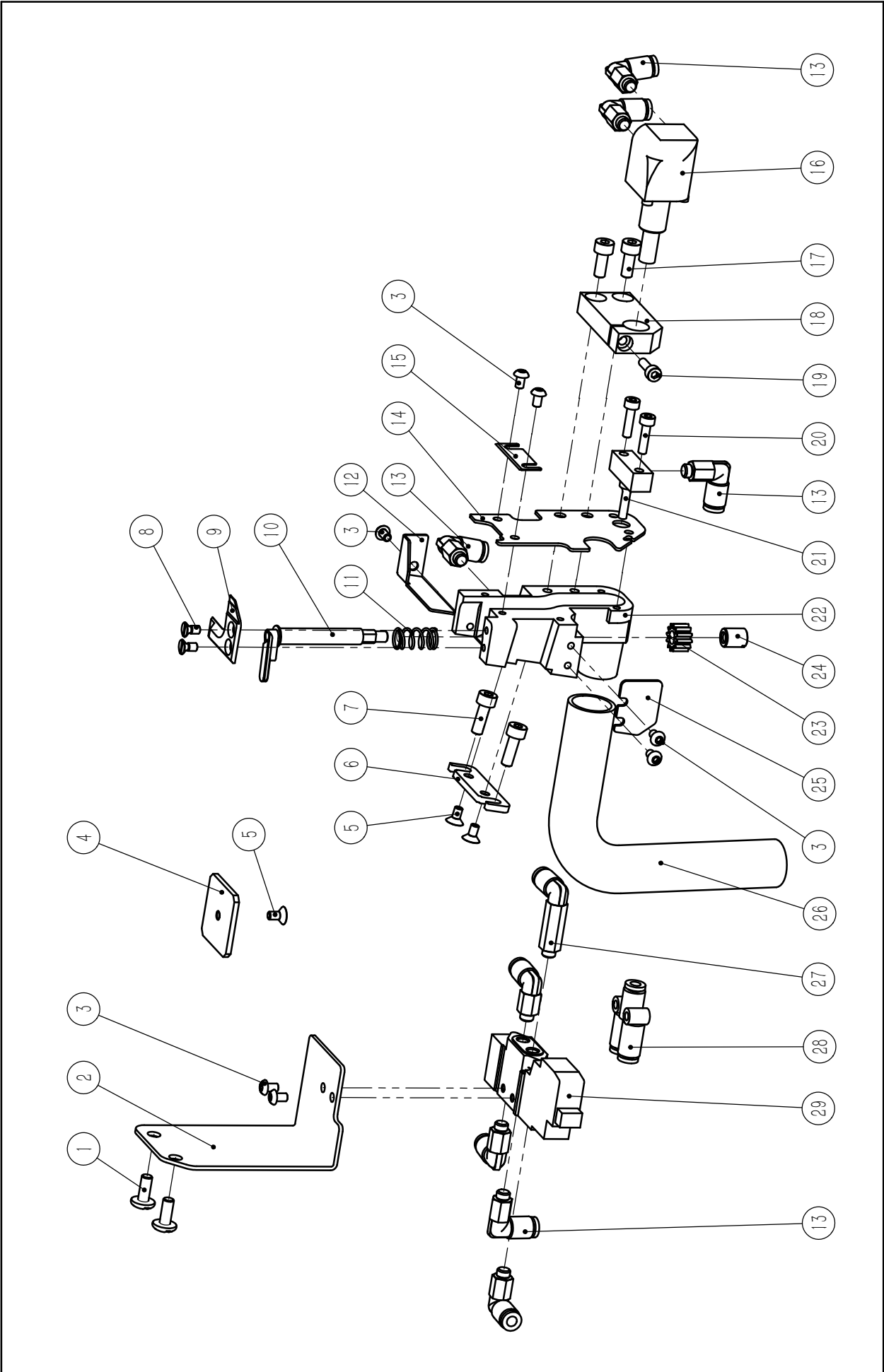
八、LED灯部件 —— LED Lights parts

序号 NO.	公司件号 Part NO.	参考件号 Italy NO.	名称	Description	数量 Number
1	185230015	KITKFARETT02	LED灯	Led light	1
2	S09041	STEI M6X5G	螺钉M6×5	Screw M6*5	1
3	S09150	STEI M6X16G	螺钉M6×16	Screw M6*16	1
4	W06013	RM6B	碟形弹垫	Disc spring	11
5	185245089	G6-FORCELLA	双肘接头	Joint	1
6	1852NS16004	5650/546	活动夹头螺母	Screw	1
7	W06014	RM3B	碟形弹垫	Disc spring	1
8	S05923	TCEI M3X14	螺钉M3×14	Screw M3*14	1
9	185212019	261/743	聚光灯支架	Led light holder	1
10	N05009	DM6C	盖形螺母M6	Nut M6	1
11	N01007	DM6	1型六角螺母M6	Nut M6	1
12	S09112	STEI M6X30G	螺钉M6×30	Screw M6*30	1



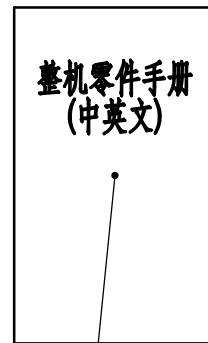
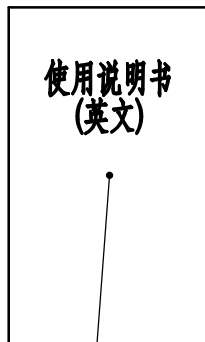
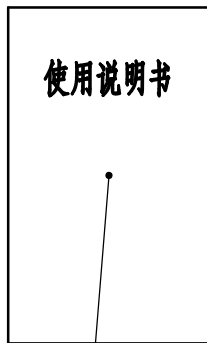
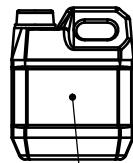
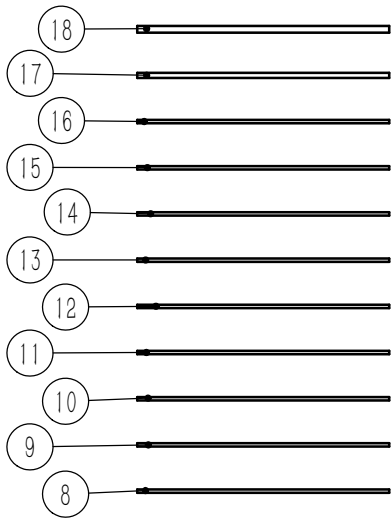
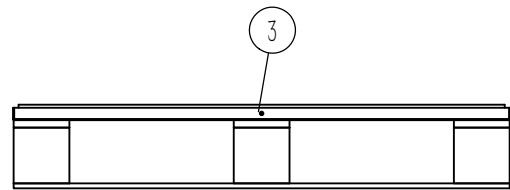
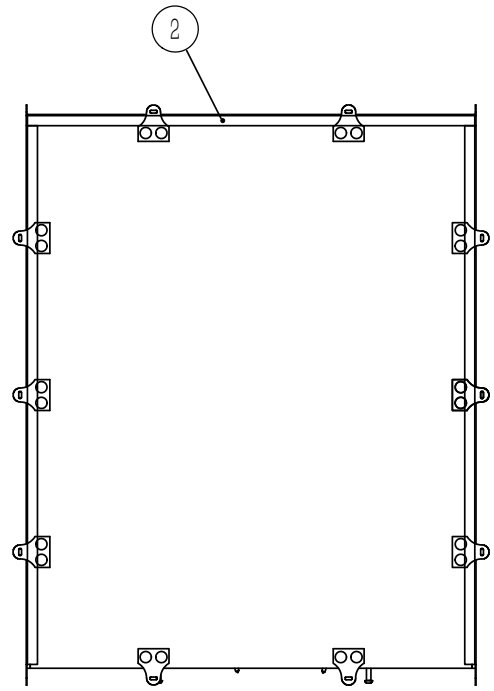
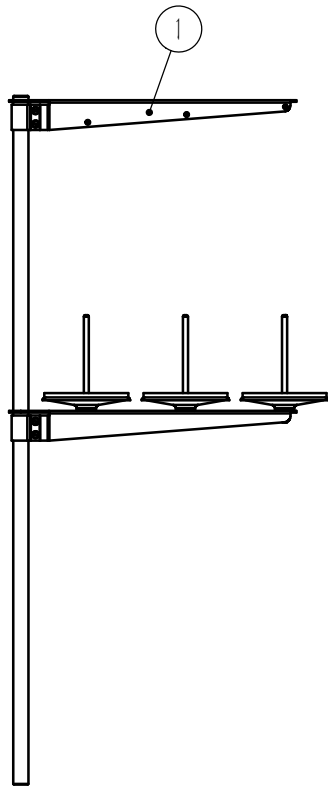
九、停针位感应部件 —— Needle stop parts

序号 NO.	公司件号 Part NO.	参考件号 Italy NO.	名称	Description	数量 Number
1	185112121	261/202	停针位感应片	Needle stop sensor	1
2	185109119	261/511	停针位感应器安装架	Needle sensor bracket	1
3	185230058	SENS-NPNNC-01	常闭传感器	Sensor	1
4	S09126	STEI M3X5G	螺钉M3×5	Screw M3*5	1
5	S09101	STEI M6X6G	螺钉M6×6	Screw M6*6	1
6	1851NS13103		端子条螺钉	Screw SM1/8*44-16	1
7	185130122	MAMMUT	端子条	Terminal strip	1



十、剪线部件 —— Trimming parts

序号 NO.	公司件号 Part NO.	参考件号 Italy NO.	名称	Description	数量 Number
1	1852NS30004	VTS-029	螺钉M4×10	Screw M4*10	2
2	185112127		剪线电磁阀安装座	Mounting base	1
3	S17877	TCBEI M3X5	螺钉M3×5	Screw M3*5	7
4	185130117		粘式配线固定座	Sticky wiring mount	1
5	S02914	TSPEI M3X6	螺钉M3×6	Screw M3*6	2
6	185109122	261-740	剪线装置安装板	Mounting plate	1
7	S05426	TCEI M4X12	螺钉M4×12	Screw M4*12	2
8	S02912	VTS-041	开槽沉头螺钉M3×6	Screw M3*6	2
9	185119104	261/729	剪线定刀	Fixed knife	1
10	18511910100	007K207C	剪线动刀组件	Moveable knife assy.	1
11	185127103	MO-8X8X16X6	剪线动刀压紧弹簧	Pressed spring knife	1
12	185112122	261/731	剪线定刀盖板	Moveable knife cover	1
13	42136001	KQ2L04-M5	快换弯头KQ2L04	Quick change elbow	8
14	185112124	261/727	剪线基座盖板	Cover of trimmer base	1
15	185119105	261/747	手动割线刀片	Manual trimming blade	1
16	185145137	261K733	剪线气缸	Trimmer cylinder	1
17	S05925	TCEI M4X10	螺钉M4×10	Screw M4*10	2
18	185109121	261/739	剪线气缸固定块	Cylinder fixing block	1
19	S05410	TCEI M3X10	螺钉M3×10	Screw M3*10	1
20	S05969	TCEI M3X12	螺钉M3×12	Screw M3*12	2
21	185109120	261/716A	剪线吹气块	Blowing device	1
22	185101102	261/730	剪线装置基座	Trimmer base	1
23	185225001	1650/737	齿轮	Gear	1
24	185102116	VTS-052	剪线齿轮固定螺母	Fixing nut	1
25	185112123	261/732	剪线传动齿轮盖板	Cover	1
26	185231023		波纹管	Bellows (ID14, OD20)	1
27	185145117	KQ2W04-M5A	加长弯头	Extended elbow	1
28	185245042	KQU04-00	Y型接头Φ4	Y shape connector Φ4	1
29	40730013		电磁阀	Solenoid valve	1



十一、附件 —— Accessory parts

序号 NO.	公司件号 Part NO.	参考件号 Italy NO.	名称	Description	数量 Number
1	18533100200		线架组件	Cable rack assembly	2
2	18513110200		打包箱木盖	Wooden cover	1
3	185131103		打包木箱底座	Wooden box base	1
4	185230024		保险丝 5×20 T0.5A	Fuse 5 × 20 t0.5a	2
5	185131109		整机零件手册(中英文)	Parts Manual	1
6	185131110		使用说明书(英文)	An instruction manual	1
7	185131105		使用说明书	An instruction manual	1
8	185245108		橙色气管Φ4	Orange trachea Φ4	1.15m
9	185245107		粉色气管Φ4	Pink trachea Φ4	0.35m
10	185245106		绿色气管Φ4	Green trachea Φ4	2.05m
11	185245104		透明气管Φ4	Transparent trachea Φ4	0.45m
12	185245102		深黄色气管Φ4	Yellow trachea Φ4	1.3m
13	185245099		白色气管Φ4	White trachea Φ4	0.55m
14	185245097		红色气管Φ4	Red trachea Φ4	2.2m
15	185245062		深蓝色气管Φ4	Dark blue trachea Φ4	1.5m
16	61911006		黑色气管Φ4	Black trachea Φ4	1.2m
17	185245110		红色气管Φ6	Red trachea Φ6	0.5m
18	82145078		黑色气管Φ8	Black trachea Φ8	4m
19	185331010		直柄内六角螺丝刀(2mm)	Hexagon screw driver	1
20	20131051		镊子	Tweezers	1
21	185131107		油壶1L	Oil pot 1L	2
22	185117101		19#机针	19# needle	7



关注威比玛公众微信号

意大利威比玛公司

Italy company : VI.BE.MAC s.p.a

意大利维罗纳省乔瓦尼卢帕托托市蒙特帕斯特罗7/i号
37057 S.Giovanni Lupatoto(VR),Italy-Via Monte Pastello 7/i
电话/TEL : +39 045 8778151/52
传真/FAX : +39 045 8779024
网址/HTTP : www.vibemac.com
邮箱/E-mail : sales@vbm-grp.com customercare@vbm-grp.com

浙江威比玛智能缝制科技有限公司

Company: Zhejiang VI.BE.MAC. Smart Sewing Technology Co., LTD.

浙江省台州市椒江区三甲东海大道东段1008号
No. 1008 East Donghai Avenue, Jiaojiang District, Taizhou City, Zhejiang Province
电话/TEL : 0086-0576-89086118
网址/HTTP : www.vibemac.com
邮箱/E-mail : sales@vbm-cn.com