

PARTS BOOK

KM-857 KM-867

KM-857-7 KM-867-7

FOR HIGH SPEED POST BED
NEEDLE FEED LOCK STITCH MACHINE



PME-090716

SunStar CO., LTD.

INFORMATION

A. Parts Book 구성 Structure of Part Book

① **A** Machine Body Mechanism
두부 및 외장 관계

④ ⑤ ⑥ ⑦ ⑧ ⑨

No.	Parts No.	Note.	Name of Parts	품 명	Q'ty BS BB	Assembly No.
A-52	418028-00H		Bobbin Winder Lever	실감기 레버	1	1
A-53	418018-00H		Bobbin Winder Adjusting Plate	실감기 조절판	1	1
A-54	SC-6130-1230		Screw(1.6" n=40)	볼트(1.6" n=40)	1	1
A-55	02-011W-2302		Washer	와셔	1	1
A-56	418028-00H		Bobbin Winder Lever Shaft	실감기 레버 축	1	1
A-57	418048-00H		Bobbin Winder Adjusting Cam	실감기 조절 캠	1	1
A-58	030200-4113		Screw(M4*PN3)	볼트(4*PN3)	1	1
A-59	04-006C-0210		E-Ring(#5)	E-링(호칭용 5)	2	2
A-60	418028-00H		Bobbin Winder Action Plate	실감기 작동판	1	1
A-61	41-088A-120H		Bobbin Winder Action Body	실감기 작동체	1	1
A-62	40-007W-1000		Washer	와셔	2	2
A-63	418028-00H		Bobbin Winder Spring	실감기 원장 스프링	1	1
A-64	418028-00H		Bobbin Stopper	보빈 스톱퍼	1	1
A-65	418028-00H		Screw	볼트	5	5
A-66	418028-00H		Bobbin Stand	보빈 스탠드	1	1
A-67	418028-00H		Bobbin Winder Mn	실감기 메스	1	1
A-68	SC-609-2302		Screw(1.6" n=40)	고장메스 조절 볼트	2	2
A-69	418028-00H		Thread Tension Adjusting Ass'y	실감기 실감력 조절장치(조)	1Set	1Set
A-70	418028-00H		Thread Tension Adjusting Shaft	실감력 실감력 조절 축	1	1
A-71	418028-00H		Thread Guide Plate	실감판	1	1
A-72	40-204A-1230		Thread Tension Disk	실감력 원판	2	2
A-73	40-330G-123A		Thread Tension Spring	실감력 조절 스프링	1	1
A-74	40-800W-1230		Thread Tension Spring Stopper	실감력 조절 스프링 스톱퍼	1	1
A-75	40-024A-1230		Spring Cover	스프링 커버	1	1
A-76	40-204A-2250		Thread Tension Nut	실감력 조절 너트	1	1
A-77	SN-0131-1400		Nut(15/16" n=20)	실감력 조절 축 너트	1	1
A-78	018048-00H		Safety Plate Ass'y	안전판(조)	1Set	1Set
A-79	018048-00H		Safety Plate	안전판	1	1
A-80	018048-00H		Safety Plate Bracket	안전판 브라켓	1	1
A-81	018048-00H		Safety Plate Holder	안전판 홀더	1	1
A-82	018048-00H		Safety Plate Hinge Screw	안전판 힌지 나사	1	1
A-83	SN-0101-1400		Nut(3/16" n=20)	니트	3	3
A-84	40-007W-1000		Washer	와셔	1	1
A-85	018048-00H		Safety Plate Spring	안전판 스프링	1	1
A-86	018048-00H		Safety Plate Spring Hook	안전판 스프링 걸이	1	1
A-87	SN-0111-1600		Nut(3/16" n=20)	니트	1	1
A-88	GP-012250-02		Bolt Cover	볼트커버	1	1
A-89	SC-9465-1230		Screw(11/16" n=40)	볼트	7	7
A-90	GP-012253-00		X-Driving Motor Cover	제 구동 모터 커버	1	1
A-91	GP-012217-00		Side Cover	옆뚜껑	1	1
A-92	GP-012215-00		Side Cover Gasket	옆뚜껑 가스켓	1	1

- ① 관계 별 고유 코드
Unique code by mechanism
- ② 관계 별 고유 명칭
Unique name by mechanism
- ③ 관계도
Explode view
- ④ Ref. No. : 파트별 고유 식별 번호
Unique identification number by part
- ⑤ Parts No. : 고유 제품 코드
Unique Product code

- ⑥ Note. : 공지사항 표기 및 메모
Refers to notice and memo
- ⑦ 품명 : 파트의 고유 품명
Name of Part : Unique name of parts
- ⑧ Q'ty : 파트의 수량
The numer of parts
- ⑨ Assembly no. : 조(組) 파트의 식별 번호
Unique identification number by set part

Ex)

구분 Category	Code	비고 Category
구 부품 Old part	01-030C-1230	
신 부품 New part	AS-000000-00	조(組)파트 Set parts
	GP-000000-00	기구적 파트 Instrumental parts
	EP-000000-00	전기적 파트 Electrical parts

WARNING

1. 조에 속한 파트는 개별 조립 시 제품의 파손 또는 재봉 불량 발생될 수 있어 해당 파트에 대한 주문 시에는 조 품목으로만 구입이 가능합니다.
2. 본 책자는 Part Book으로 제작되었으므로 매뉴얼로 사용 불가합니다.
3. 사전 예고 없이 사양이 변경 될 수도 있습니다.

1. The parts classified as ass'y items may cause damage to the machine or bad sewing when they are separately assembled. Hence, when they are ordered, they can be purchased as ass'y items only.
2. This is a parts book. It cannot be used as a manual.
3. Parts are Subject to change in Design Without Prior Notice.

MODEL

- KM-857
HIGH SPEED POST BED, 1- NEEDLE NEEDLE FEED LOCK STITCH MACHINE
- KM-857-7
HIGH SPEED POST BED, 1- NEEDLE NEEDLE FEED LOCK STITCH MACHINE
WITH THREAD TRIMMER
- KM-867
HIGH SPEED POST BED, 2- NEEDLE NEEDLE FEED LOCK STITCH MACHINE
- KM-867-7
HIGH SPEED POST BED, 2- NEEDLE NEEDLE FEED LOCK STITCH MACHINE WITH THREAD TRIMMER

NOTE : Parts are Subject to change in Design Without Prior Notice.

1. 조에 속한 파트는 개별 조립 시 제품의 파손 또는 재봉 불량 발생될 수 있어 해당 파트에 대한 주문 시에는 조 품목으로만 구입이 가능합니다.
 2. 본 책자는 Parts Book으로 제작되었으므로 매뉴얼로 사용 불가합니다.
- 1. The parts classified as ass'y items may cause damage to the machine or bad sewing when they are separately assembled. Hence, when they are ordered, they can be purchased as ass'y items only.**
- 2. This is a parts book. It cannot be used as a manual.**

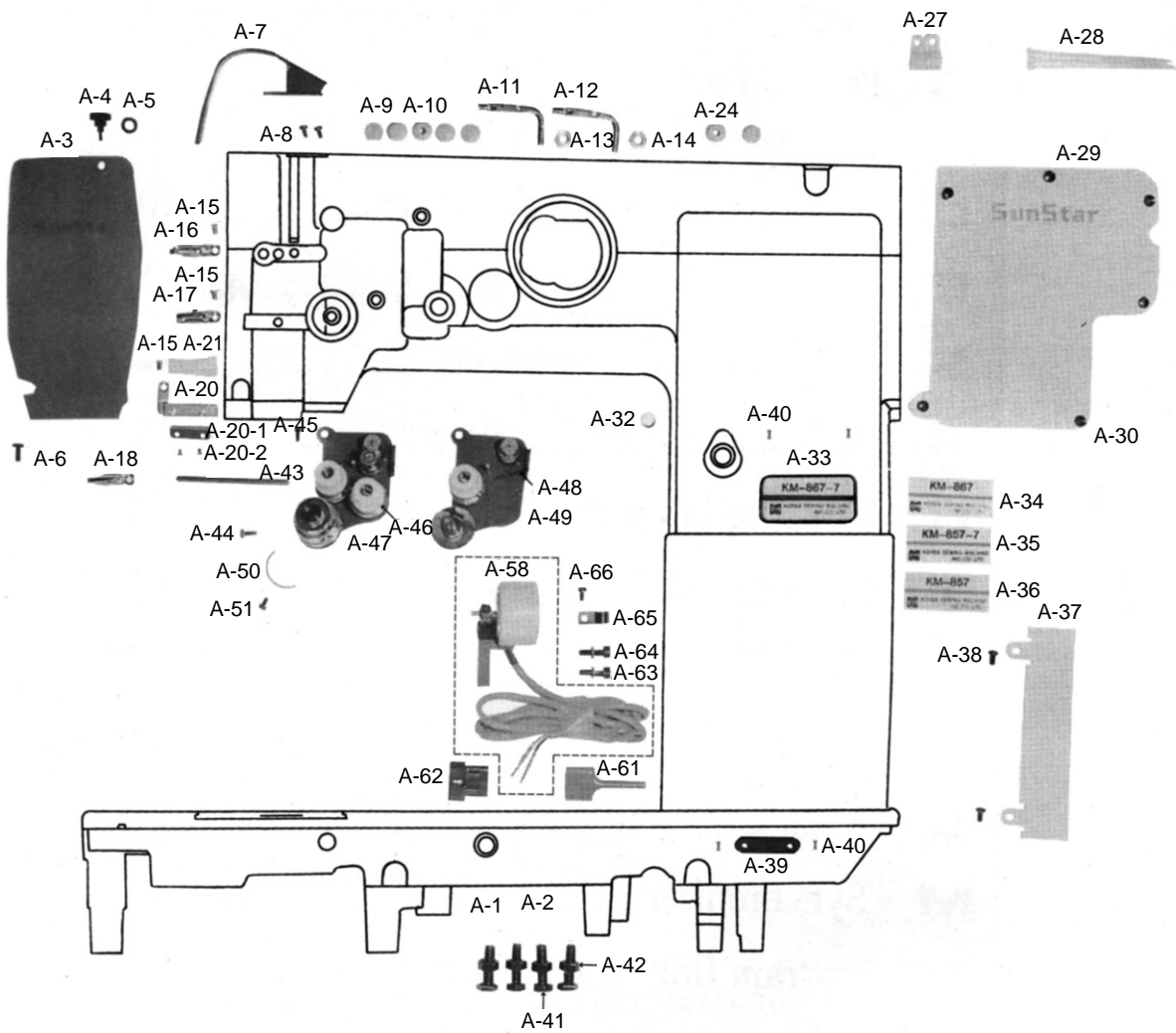
CONTENTS

목 차

A	Machine Body & Threading Mechanism 외장품 및 실 관계.....	6
B	Upper Shaft Mechanism 상축 관계.....	10
C	Presser Foot & knee Lifting Mechanism 노루발 및 무릎 올림 관계.....	11
D	Needle Bar Rocking Mechanism 바늘대 요동 관계.....	12
E	Lower Shaft Mechanism 하축 관계.....	13
F	Post & Saddle Mechanism 포스트 및 새들 관계.....	14
G	Feed Mechanism 피이드 관계.....	16
H	Feed Dog Lever & Hook Mechanism 톱니 레버 및 훅 관계.....	20
I	Lubrication 급유 관계.....	22
J	Thread Trimming Mechanism 사절 관계.....	24
K	Wiper Mechanism 와이퍼 관계.....	26
L	Reverse Button Mechanism 역진 버튼 관계.....	27
M	Synchronizer 싱크로나이저 관계.....	28
N	Program Unit Box & Presser Foot Lifting Solenoid Mechanism 프로그램 유니트 및 노루발 올림 장치 관계.....	29
O	Accessories 액세서리.....	30
P	Gauge Parts 게이지 부분.....	32
	* INDEX	34

A

Machine Body & Threading Mechanism 외장품 및 실 관계



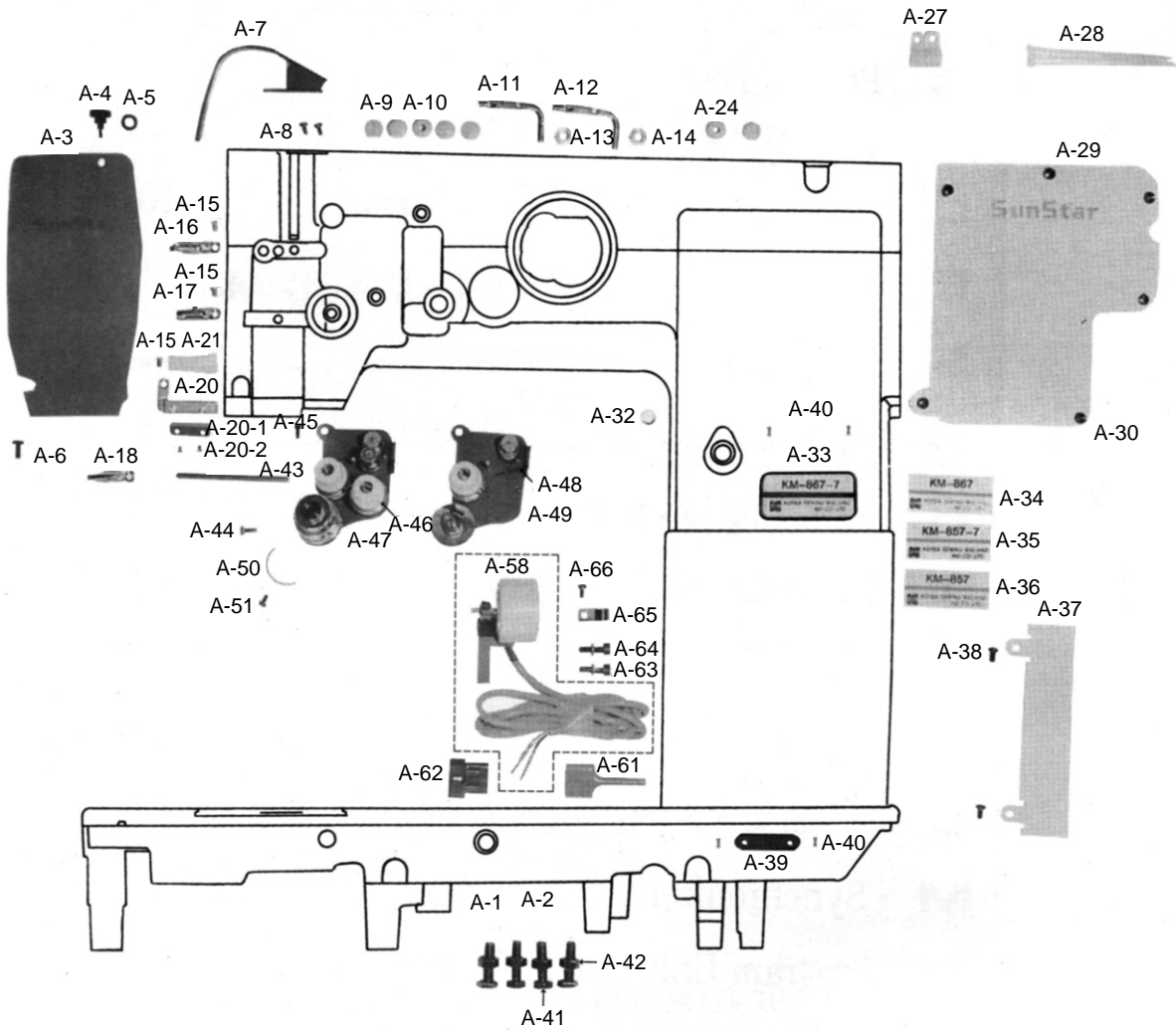
Ref. No.	Parts No.	Note	Name of Parts	품 명	Q' ty	Applied Period
A-1	AS-005069-00	C,D	Arm, Arm Base, Bed	암, 아암받침, 베드(조)	1	
A-2	AS-005070-00	C-1,D-1	Arm, Arm Base, Bed	암, 아암받침, 베드(조)	1	
A-3	01-006A-7500		Face Plate	면판	1	
A-4	01-007S-7500		Screw(Upper) For A-3	면판 체결사(상)	1	
A-5	01-007W-7400		Washer(Upper) For A-3	면판 와셔	1	
A-6	01-009S-7500		Screw(Lower) For A-3	면판 체결사(하)	1	
A-7	GP-013234-00		Thread Take Up Cover	실채기 커버	1	
A-8	SC-0502-2302		Screw (9/64" n=40)	홈볼이 등근납작 작은나사 (9/64" n=40)	2	
A-9	44-021R-7400		Rubber Cap	베드 기름 마개	5	
A-10	01-007R-8130		Oil Cap	고무마개(Hole)	3	
A-11	01-015A-7400	C,C-1	Thread Retainer	윗실결이	2	
A-12	01-015A-7400	D,D-1	Thread Retainer	윗실결이	1	
A-13	SN-0121-7400	C,C-1	Nut (15/64" n=28)	육각너트 (15/64" n=28)	2	
A-14	SN-0121-7400	D,D-1	Nut (15/64" n=28)	육각너트 (15/64" n=28)	1	
A-15	SC-0519-2302		Screw (9/64" n=40)	홈볼이 등근접시 작은나사 (9/64" n=40)	3	
A-16	01-018A-7500		Arm Thread Guide Plate (U)	암 실안내(상)	1	
A-17	01-020A-7500	C,C-1	Arm Thread Guide Plate (M)	암 실안내(중)	1	
A-18	01-022C-7400	D,D-1	Arm Thread Guide Plate (M)	실 결이(하)	1	
A-20	01-022A-7500		Arm Thread Guide Plate (L)	암 실안내(하)	1	
A-20-1	01-024A-7500		Felt For Upper Thread Supply	윗실 헬트잡이	1	
A-20-2	SC-0536-7500		Screw (3/32" n=56)	홈볼이 등근납작 작은나사 (3/32" n=56)	2	
A-21	44-024M-7500		Felt For Upper Thread Supply	윗실 급유 헬트	1	
A-24	44-008M-7500		Oil Seat	오일 시트	3	
A-27	01-009R-2700	C,D	Cable Holder (6N)	케이블 잡이A (6N)	3	
A-28	02-003A-2700	C,D	Band Clip	나이론 클립	7	
A-29	01-038A-7500		Back Cover Plate	뒷뚜껑	1	
A-30	SC-0179-3710		Screw (11/64" n=40)	홈볼이 등근납작 작은나사 (11/64" n=40)	3	
A-32	06-001C-7400		Oil Cap	피이드 조절기 구멍 마개	1	

NOTE:

- ① C=KM-867-7
- C-1=KM-867
- D=KM-857-7
- D-1=KM-857

A

Machine Body & Threading Mechanism 외장품 및 실 관계





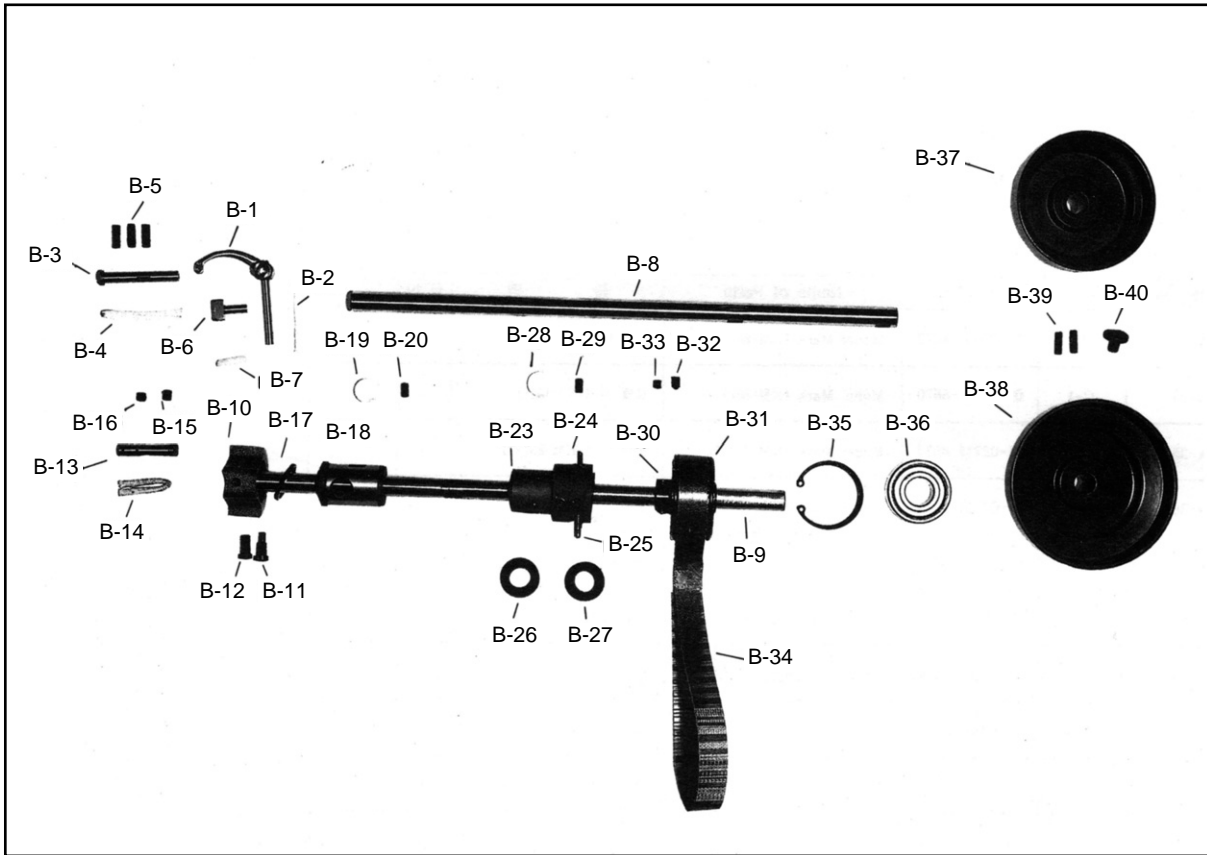
Ref. No.	Parts No.	Note	Name of Parts	품 명	Q' ty	Applied Period
A-33	GP-009185-00	C	Model Mark (KM-867-7)	모델 마크(KM-867-7)	1	
A-34	GP-009190-00	C-1	Model Mark (KM-867)	모델 마크(KM-867)	1	
A-35	GP-009193-00	D	Model Mark (KM-857-7)	모델 마크(KM-857-7)	1	
A-36	GP-009191-00	D-1	Model Mark (KM-857)	모델 마크(KM-857)	1	
A-37	01-030A-8677	C,D	Cable Cover	케이블 커버	1	
A-38	SC-0543-2302	C,D	Screw (11/64" n=40)	홈볼이 납작 작은나사 (11/64" n=40)	2	
A-39	01-035P-1370		Machine Number Plate	번호판	1	
A-40	01-035P-7400		Pin	번호판 핀	4	
A-41	SC-0329-8130		Screw (M8×1.25)	육각 보울트(M8 × 1.25)	4	
A-42	01-014C-8130		Nut For A-41	베드받침 너트(M8 × P1.25 3종)	4	
A-43	40-010A-5607		Tension Release Bar	사절 실늑추기 축	1	
A-44	SC-0158-3710		Screw (9/64" n=40)	홈볼이 납작 작은나사 (9/64" n=40)	1	
A-45	SC-0179-3710		Screw (11/64" n=40)	홈볼이 둥근납작 작은나사 (11/64" n=40)	1	
A-46	40-002A-7507	C	Thread Tension Control Ass'y	실조절 장치(조)	1	
A-47	40-002A-7500	C-1	Thread Tension Control Ass'y	실조절 장치(조)	1	
A-48	40-002A-8577	D	Thread Tension Control Ass'y	실조절 장치(조)	1	
A-49	40-002A-8570	D-1	Thread Tension Control Ass'y	실조절 장치(조)	1	
A-50	01-019C-7400		Stopper For Thread Take-Up Spring	실조절 장치 스톱퍼	1	
A-51	SC-0531-2302		Screw (9/64" n=40)	홈볼이 둥근납작 작은나사 (9/64" n=40)	1	
A-58	40-006A-7507	C,D	Tension Release Solenoid Ass'y(4)	실늑추기 솔레노이드(조)	1	
A-61	17-437C-7907	C,D	Tube For A-58	사각 튜브(소)	1	
A-62	08-010B-3701	C,D	Plug For A-58	플러그 1490P1 (백색)	1	
A-63	SC-0162-5607	C,D	Screw (M5×0.8)	육각구멍볼이 보울트 (M5×0.8)	2	
A-64	07-011W-1230	C,D	Washer For A-58	가마잡이 와셔	2	
A-65	01-009R-2350	C,D	Cable Holder	케이블 잡이	1	
A-66	SC-0531-2302	C,D	Screw (9/64" n=40)	홈볼이 둥근납작 작은나사 (9/64" n=40)	1	

NOTE:

- ① C=KM-867-7
- C-1=KM-867
- D=KM-857-7
- D-1=KM-857

B

Upper Shaft Thread Take-Up Mechanism 상축 실채기 관계



Ref. No.	Parts No.	Note	Name of Parts	품명	Q'ty	Applied Period
B-1	08-103A-7500		Thread Take-Up Lever	실채기(3)	1	
B-2	44-0000-1234		Oil Wick	유심	1	
B-3	08-101A-8130		Hinge Pin For B-1	실채기 힌지핀	1	
B-4	44-0000-1230		Oil Wick	유심	1	
B-5	SC-0508-1230		Screw (15/64" n=28)	홈볼이 멈춤나사(15/64" n=28)	3	
B-6	02-103A-740L		Thread Take-Up Lever Holder	실채기 잡이	1	
B-7	06-033M-7400		Wick For B-6	절환기 헬트	1	
B-8	02-101A-7507	C,D	Upper Shaft(T)	상축	1	
B-9	02-101A-7500	C-1,D-1	Upper Shaft(S)	상축	1	
B-10	02-105A-7400		Link Cam	링크 캠	1	
B-11	SC-0123-1230		Screw (9/32" n=28)	홈볼이 납작 작은나사(9/32" n=28)	1	
B-12	SC-0124-7400		Screw (9/32" n=28)	홈볼이 납작 작은나사(9/32" n=28)	1	
B-13	PN-000277-01		Needle Bar Crank Shaft	링크 캠 편	1	
B-14	44-0000-1230		Oil Wick	유심	1	
B-15	SC-A308-4517		Screw (1/4" n=40)	육각구멍볼이 멈춤나사(1/4" n=40)	1	
B-16	SC-A550-4517		Screw (1/4" n=40)	홈볼이 멈춤나사(1/4" n=40)	1	
B-18	GP-028266-00		Upper Shaft Bushing (F)	상축 앞 붓싱	1	
B-19	02-009M-7400		Felt (A) For B-18	상축 앞 붓싱 헬트	1	
B-20	SC-0507-1230		Screw (15/64" n=28)	홈볼이 멈춤나사(15/64" n=28)	1	
B-23	02-212A-7500		Upper Shaft Bushing (M)	상축 중붓싱	1	
B-24	44-012P-7500		Oil Tube Pin(A) For B-23	상축 중붓싱 오일 튜브핀(A)	3	
B-25	44-013P-7500		Oil Tube Pin(B) For B-23	상축 중붓싱 오일 튜브핀(B)	1	
B-26	44-010M-7500		Oil Seal(L) For B-23	상축 중붓싱 오일실(좌)	1	
B-27	44-011M-7500		Oil Seal(R) For B-23	상축 중붓싱 오일실(우)	1	
B-28	02-009M-7400		Felt(A) For B-23	상축 앞 붓싱 헬트	1	
B-29	SC-0507-1230		Screw (15/64" n=28)	홈볼이 멈춤나사(15/64" n=28)	1	
B-30	02-002A-8670		Timing Belt Pulley (Upper)	타이밍 풀리(상)	1	
B-31	02-015C-7400		Side Ring	후렌지	2	
B-32	SC-A117-4417		Screw (1/4" n=40)	육각구멍볼이 멈춤나사(1/4" n=40)	1	
B-33	SC-A308-4517		Screw (1/4" n=40)	육각구멍볼이 멈춤나사(1/4" n=40)	1	
B-34	02-001A-8270		Timing Belt	타이밍 벨트	1	
B-35	02-018G-7400		Stop Ring(C)	베어링 스냅링(47)	1	
B-36	02-019A-7400		Bearing (6204 ZZ)	6204 베어링	1	
B-37	02-020A-8677	C,D	Pulley (T)	풀리	1	
B-38	02-020A-8670	C-1,D-1	Pulley (N)	풀리(비사절)	1	
B-39	SC-0150-2500		Screw (15/64" n=40)	홈볼이 납작 작은나사(15/64" n=40)	1	
B-40	SC-0188-1230	D,D-1	Screw (5/16" n=24)	홈볼이 바인딩 작은나사(5/16" n=24)	1	

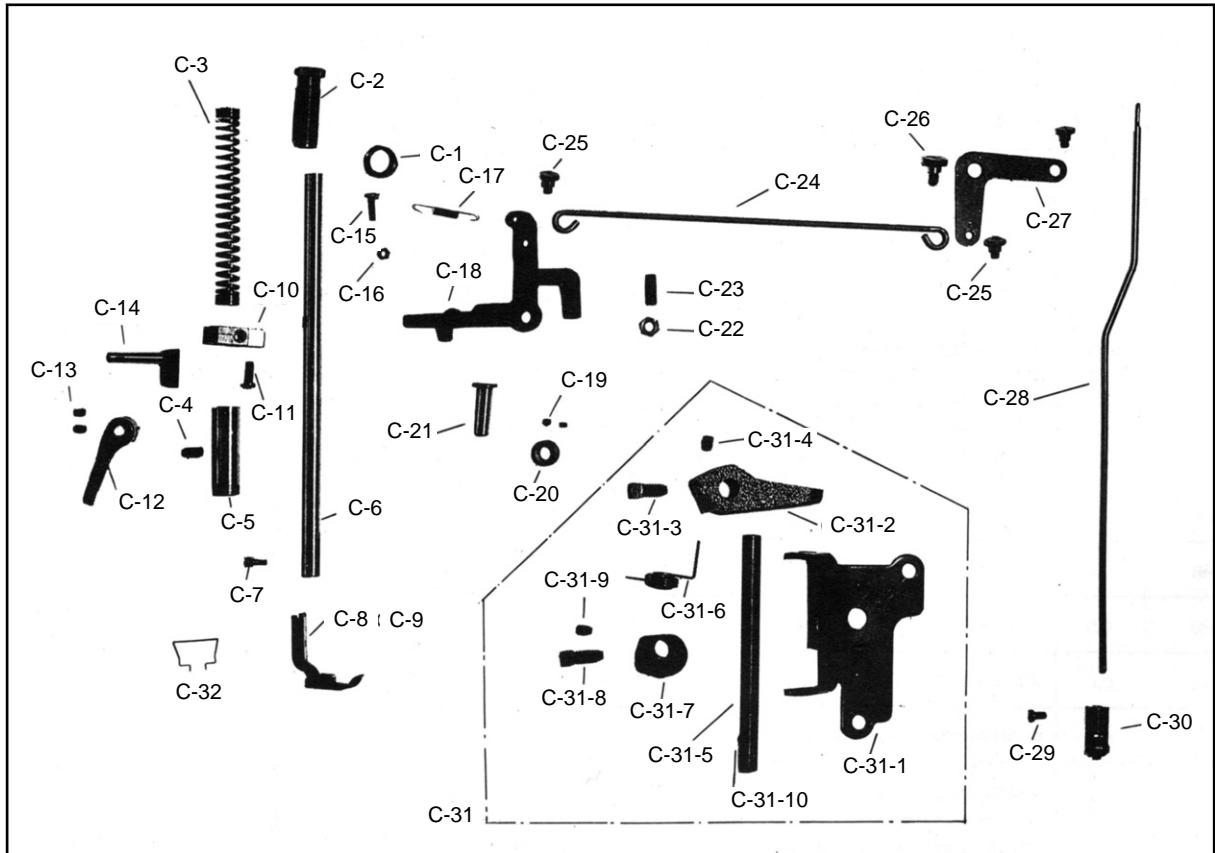
NOTE:

- ① C=KM-867-7
- C-1=KM-867
- D=KM-857-7
- D-1=KM-857



Presser Foot & knee Lifting Mechanism

노루발 및 무릎 올림 관계



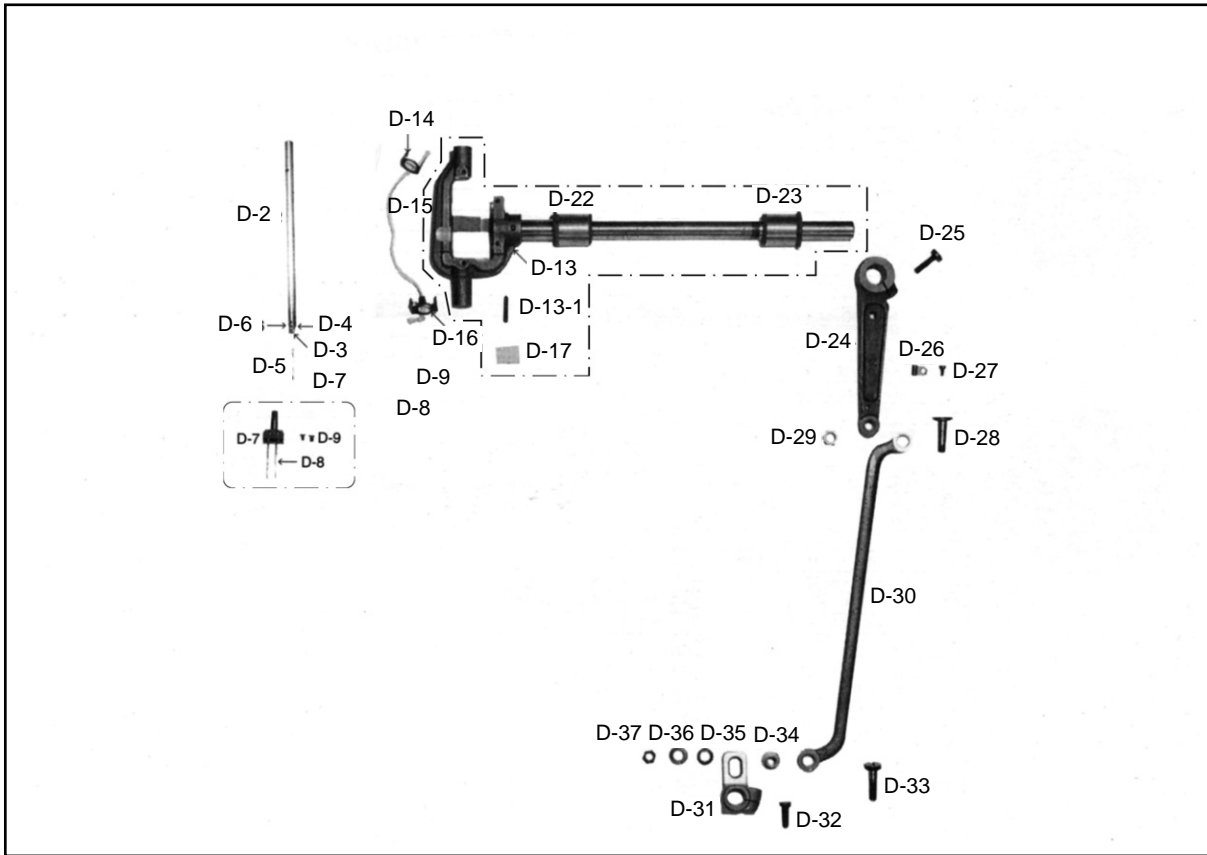
Ref. No.	Parts No.	Note	Name of Parts	품명	Q'ty	Applied Period
C-1	SN-0100-3400		Nut (9/16" n=20)	육각너트(9/16" n=20)	1	
C-2	SC-0367-3400		Screw (9/16" n=20)	홈볼이 납작 작은나사(9/16" n=20)	1	
C-3	05-004A-8570		Spring For C-2	압력 조절 스프링	1	
C-4	SC-0507-1230		Screw (15/64" n=28)	홈볼이 납작 작은나사(9/64" n=40)	1	
C-5	05-101A-7500		Presser Bar Bushing(L)	누름대 bushes(C)	1	
C-6	GP-031775-01		Presser Bar	누름대	1	
C-7	SC-0315-2302		Screw (9/64" n=40)	홈볼이 납작 작은나사(9/64" n=40)	1	
C-8*	05-110A-8670	C.C-1	Presser Foot	노루발 3/32" (통)	1	
C-9	05-001A-8170	D.D-1	Presser Foot	노루발	1	
C-10	GP-013204-00		Presser Bar Holder	누름대 잡이	1	
C-11	SC-0174-1230		Screw (11/64" n=40)	홈볼이 납작 작은나사(11/64" n=40)	1	
C-12	43-001A-640L		Presser Bar Lifter	누름대 올리기	1	
C-13	SC-0164-2700		Screw (15/64" n=28)	육각구멍볼이 멈춤나사 (15/64" n=28)	2	
C-14	GP-025414-01		Presser Bar Lifter Crank	누름대 올리기 크랭크	1	
C-15	SC-0158-3710		Screw (9/64" n=40)	홈볼이 둥근납작 작은나사(9/64" n=40)	1	
C-16	11-017S-7500		Nut For C-17	누름대 올림 레버 스프링 너트	1	
C-17	43-013A-7500		Spring For Presser Bar Lifter Lever	누름대 올림 레버	1	
C-18	GP-025423-00		Presser Bar Lifter Lever	누름대 올리기 레버	1	
C-19	SC-0113-3400		Screw (11/64" n=40)	홈볼이 멈춤나사(11/64" n=40)	2	
C-20	43-008A-7500		Collar For C-21	누름대 올리기 레버축 카라	1	
C-21	43-007A-7500		Presser Bar Lifter Lever Stud	누름대 올리기 레버축	1	
C-22	43-005C-7500		Nut For C-18	누름대 올리기 레버지너트	2	
C-23	SC-0148-2302		Screw (9/32" n=28)	홈볼이 멈춤나사(9/32" n=28)	1	
C-24	43-015A-7500		Knee Lifter Connecting Rod	무릎 올림 연결로드	1	
C-25	43-017S-7500		Stud Screw For C-24	무릎 올림 연결 로드 단나사	3	
C-26	SC-001792-00		Stud Screw For C-27	무릎 올림 레버 단나사	1	Dec. 09. 09
C-27	43-014S-7500		Stud Screw For C-27	무릎 올림 레버 단나사	1	
C-27	43-013A-7500		Knee Lifter Lever	무릎 올림 레버	1	
C-28	43-016A-8670		Knee Lifter Bar	무릎 올림 봉	1	
C-29	SC-0542-1230		Screw (11/64" n=40)	홈볼이 멈춤나사(11/64" n=40)	1	
C-30	43-015A-5607		Knee Lifting Roller Bracket Assembly	무릎 올림 봉 로올러(조)	1	
C-31	43-018A-7500		Knee Lifter Assembly	무릎 올림(조)	1	
C-31-1	43-028A-8130		Lever Shaft Bracket	레버축 브라켓	1	
C-31-2	GP-018050-00		Knee Lifter Rock Bar Lever	무릎 올림 봉 받침레버	1	
C-31-3	43-026S-8130		Screw (A) For C-31-2	무릎 올림 레버 고정나사	1	
C-31-4	43-027S-8130		Screw (B) For C-31-2	무릎 올림 레버 고정나사(소)	1	
C-31-5	43-029A-7500		Knee Lifter Rock Bar Lever Shaft	무릎 올림 봉 받침레버축	1	
C-31-6	43-027G-8130		Return Spring For C-31-5	레버축 리턴 스프링	1	
C-31-7	43-027A-8130		Lever Shaft Stopper Collar	레버축 스톱퍼 카라	1	
C-31-8	SC-0107-4111		Screw (M6×1.0)	육각볼트(M6×1.0)	1	
C-31-9	43-027S-8130		Screw (B) For C-31-7	무릎 올림 레버 고정나사(소)	1	
C-31-10	43-030P-8130		Lever Shaft Guide Pin	레버축 안내핀	1	
C-32	01-101C-7500		Safety Guide	안전가이드(비사절)	1	

NOTE:

- ① C=KM-867-7
- C-1=KM-867
- D=KM-857-7
- D-1=KM-857
- ② The "*" Mark is Option Parts

D

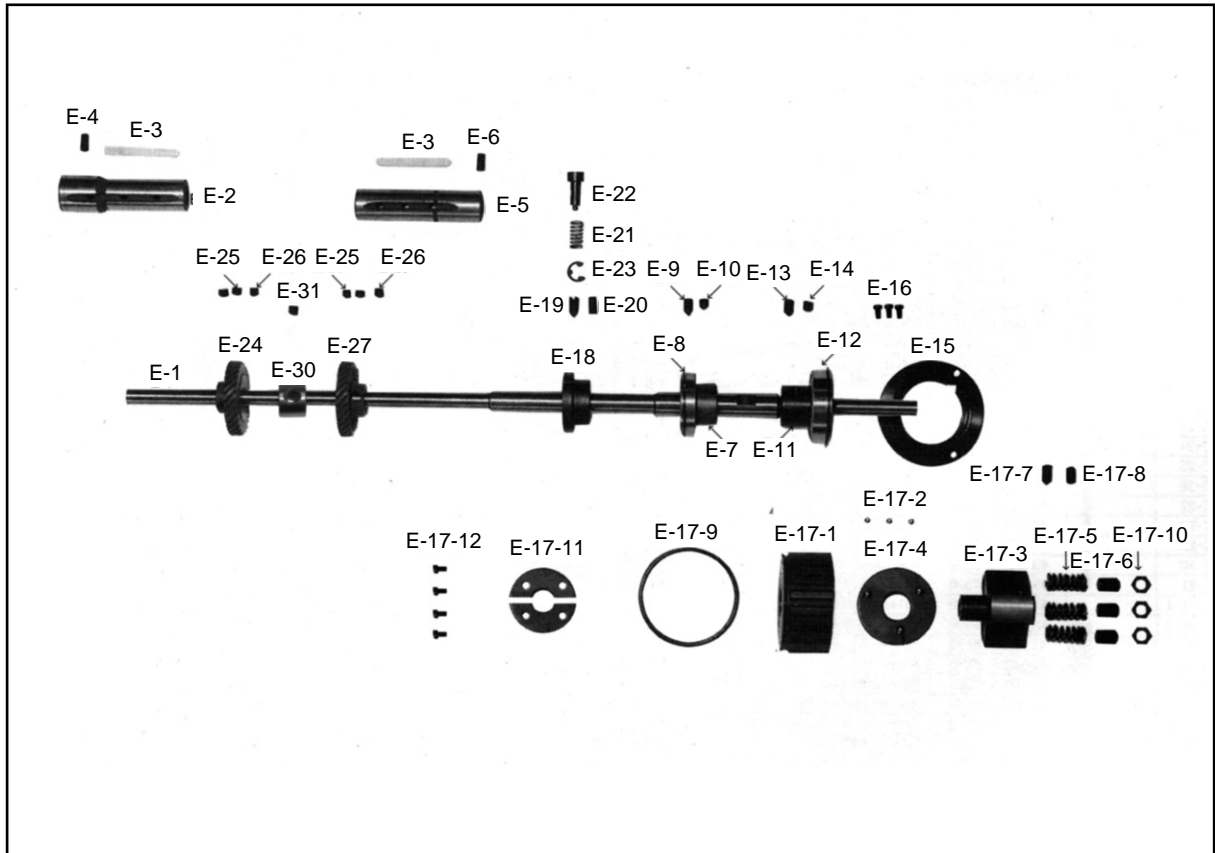
Needle Bar Rocking Mechanism 바늘대 요동 관계



Ref. No.	Parts No.	Note	Name of Parts	품명	Q' ty	Applied Period
D-2	04-101A-8170	D,D-1	Needle Bar	바늘대	1	
D-3	GP-011730-00	D,D-1	Needle Bar Thread Guide	바늘대 실걸이	1	
D-4	SC-0125-5607	D,D-1	Screw (3/32" n=56)	홈볼이 바인딩 작은나사(3/32" n=56)	1	
D-5		D,D-1	Needle	바늘	1	
D-6	SC-A131-4522	D,D-1	Screw (1/8" n=44)	홈볼이 납작 작은나사(1/8" n=44)	1	
D-7*	02-121A-7400	C,C-1	Needle Clamp 3/32	침지 3/32	1	
D-8		C,C-1	Needle	바늘	2	
D-9	SC-0160-5607	C,C-1	Screw (9/64" n=40)	홈볼이 둥근납작 작은나사(9/64" n=40)	2	
D-13	AS-004803-00		Needle Bar Frame	바늘대 후레임	1	
D-13-1	04-009P-7400		Taper Pin	바늘대 후레임 고정핀	1	
D-14	04-012C-7400		Needle Bar Wick Holder (Upper)	요동축 유심잡이(상)	1	
D-15	44-0000-1230		Oil Wick	유심	1	
D-16	44-070A-7500		Needle Bar Wick Holder (Lower)	바늘대 유심잡이(하)	1	
D-17	44-107M-7900		Felt For Needle Bar Frame	바늘대 급유 펠트(A)	1	
D-22	04-111A-7400		Needle Bar Rock Shaft Bushing (F)	요동축 앞붓싱	1	
D-23	04-114A-7400		Needle Bar Rock Shaft Bushing (R)	요동축 뒷붓싱	1	
D-24	GP-014888-00		Needle Bar Connecting Rod	바늘대 요동축 연결로드	1	
D-25	SC-020S-7400		Screw For D-24	요동로드 쥘나사	1	
D-26	04-021C-7400		Wick Supporter	유심잡이(2-51)	1	
D-27	SC-0531-2302		Screw (9/64" n=40)	홈볼이 둥근납작 작은나사(9/64" n=40)	1	
D-28	04-016S-7400		Stud Screw For D-24	요동링크 단나사	1	
D-29	SN-0109-3710		Nut	육각너트	1	
D-30	04-101A-8270		Needle Bar Rock Link	바늘대 요동 링크	1	
D-31	15-014A-8670		Needle Bar Rock Crank	바늘대 요동 크랭크	1	
D-32	SC-0523-7400		Screw (1/4" n=28)	홈볼이 넵비 작은나사(1/4" n=28)	1	
D-33	15-031A-5607		Stud Screw For D-31	바늘대 요동 크랭크 단나사	1	
D-34	15-033A-5607		Needle Bar Rock Crank Collar	바늘대 요동 크랭크 카라	1	
D-35	09-025W-8270		Washer(B) For D-31	새들 쥘 나사 와셔	1	
D-36	15-035W-5607		Spring Washer For D-31	바늘대 요동 크랭크 스프링 와셔	1	
D-37	SN-0107-1230		Nut (9/32" n=28)	육각너트(9/32" n=28)	1	

NOTE:

- ① C=KM-867-7
C-1=KM-867
D=KM-857-7
D-1=KM-857
- ② The "*" Mark is Option Parts



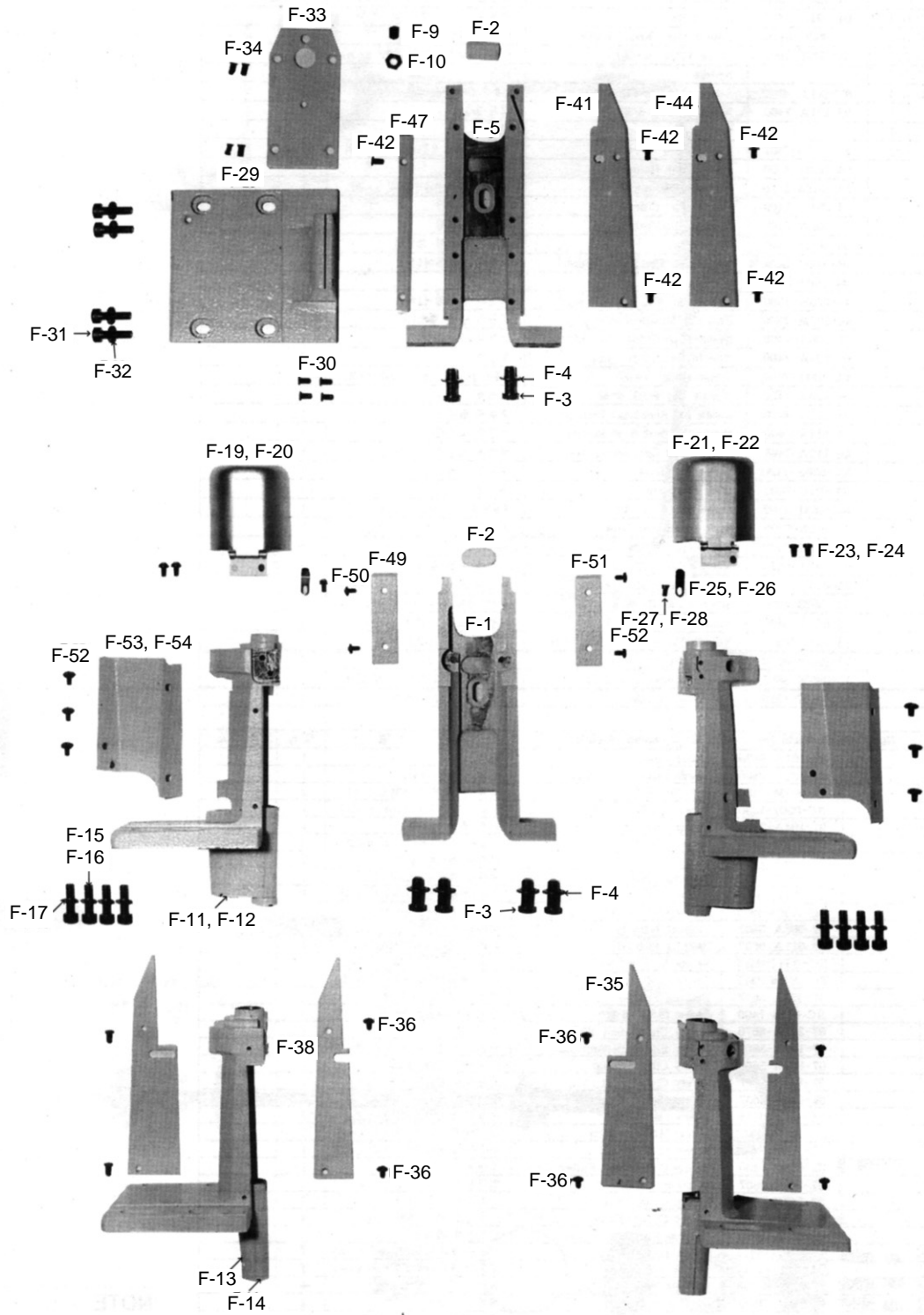
Ref. No.	Parts No.	Note	Name of Parts	품명	Q'ty	Applied Period
E-1	07-101A-8670		Lower Shaft	하축	1	
E-2	07-102A-7400		Lower Shaft Front Bushing	하축 전부싱 (표준)	1	
E-3	07-004M-7400		Felt For E-2	하축 앞 부싱 마개 펠트(5-3)	2	
E-4	SC-0507-1230		Screw (15/64" n=28)	흡블이 멈춤나사 (15/64" n=28)	1	
E-5	07-104A-7500		Lower Shaft Middle Bushing	하축 중부싱 (표준)	1	
E-6	SC-0507-1230		Screw (15/64" n=28)	흡블이 멈춤나사 (15/64" n=28)	1	
E-7	07-106A-7500		Bearing Bushing	하축중 베어링 부싱	1	
E-8	07-007A-5607		Bearing (6904NR)	하축중 베어링 (6904NR)	1	
E-9	SC-A117-4417		Screw (1/4" n=40)	육각구멍블이 멈춤나사 (1/4" n=40)	1	
E-10	SC-A308-4517		Screw (1/4" n=40)	육각구멍블이 멈춤나사 (1/4" n=40)	1	
E-11	07-108A-5607		Bearing Bushing	하축후 베어링 부싱	1	
E-12	07-011A-5607		Bearing (6004NR)	하축후 베어링 (6004NR)	1	
E-13	SC-A117-4417		Screw (1/4" n=40)	육각구멍블이 멈춤나사 (1/4" n=40)	1	
E-14	SC-A308-4517		Screw (1/4" n=40)	육각구멍블이 멈춤나사 (1/4" n=40)	1	
E-15	07-112A-5607		Bearing Presser	하축후 베어링 누름판	1	
E-16	SC-0155-7400		Screw (9/64" n=40)	접시머리 보물트 (9/64" n=40)	3	
E-17-1	07-221A-8670		Safety Clutch Belt Pulley	안전장치 벨트 풀리	1	
E-17-2	07-142A-5607		Safety Clutch Driving Ball	안전장치 클러치 구동용 볼 7/3	3	
E-17-3	CL-000244-00		Safety Clutch Collar	안전장치 카라	1	Oct. 27. 08
	07-243A-5607		Safety Clutch Collar	안전장치 카라 (K2553)	1	
E-17-4	07-244C-5607		Safety Clutch Disc	안전장치 클러치판(K2542)	1	
E-17-5	07-145G-5607		Safety Clutch Spring	안전장치 스프링	3	
E-17-6	SC-0356-4115		Screw (M10×1.25)	흡블이 멈춤나사 (M10×1.25)	3	
E-17-7	SC-A117-4417		Screw (1/4" n=40)	육각구멍블이 멈춤나사 (1/4" n=40)	1	
E-17-8	SC-A308-4517		Screw (1/4" n=40)	육각구멍블이 멈춤나사 (1/4" n=40)	1	
E-17-9	02-015C-7400		Safety Clutch Belt Pulley Ring	후렌치	1	
E-17-10	07-148C-5607		Nut For E-17-7	안전장치 스프링 조정나사 너트	3	
E-17-11	07-149C-5607		Safety Collar Washer	안전장치 카라 외셔	2	
E-17-12	SC-A301-4119		Safety Collar Washer Screw	안전장치 카라 외셔 나사	4	
E-18	07-251A-5607		Ratchet For Safety Clutch	안전장치 래치트	1	
E-19	SC-A117-4417		Screw (1/4" n=40)	육각구멍블이 멈춤나사 (1/4" n=40)	1	
E-20	SC-A308-4517		Screw (1/4" n=40)	육각구멍블이 멈춤나사 (1/4" n=40)	1	
E-21	06-011G-8270		Ratchet Button Spring	피드 조절 버튼 스프링	1	
E-22	07-009A-8670		Ratchet Button	래치트 버튼	1	
E-23	06-033M-3800	C.C-1	E-Ring(∅3)	톱니 받침 블록 축 E링 3	1	
E-24	GP-018248-01	C.C-1	Lower Shaft Spiral Gear	기어(대)	1	
E-25	SC-A308-4517	C.C-1	Screw (1/4" n=40)	흡블이 멈춤나사 (1/4" n=40)	4	
E-26	SC-A117-4417		Screw (1/4" n=40)	흡블이 멈춤나사 (1/4" n=40)	2	
E-27	GP-018248-01		Lower Shaft Spiral Gear	기어(대)	1	
E-30	06-054A-5700		Vertical Feed Eccentric Cam	편심캠	1	
E-31	SC-A550-4517		Screw (1/4" n=40)	흡블이 멈춤나사 (1/4" n=40)	1	

NOTE:

- ① C=KM-867-7
C-1=KM-867
D=KM-857-7
D-1=KM-857

- ② The "*" Mark is Option Parts

Post & Saddle Mechanism 포스트 및 새들 관계





Ref. No.	Parts No.	Note	Name of Parts	품명	Q' ty	Applied Period
F-1	GP-025689-00	C,C-1	Post	포스트	1	
F-2	44-026M-8670	C,C-1	Post Felt	톱니 레버 급유 헬트	2	
F-3	SC-0344-8260	C,C-1	Screw (5/16" n=24)	홈이 동근납작 작은나사 (5/16" n=24)	6	
F-4	09-025W-8270	C,C-1	Washer For Post	새들 쥘나사 와셔	6	
F-5	09-001A-8570	D,D-1	Post	포스트	1	
F-9	SC-0504-1230	D,D-1	Screw (1/4" n=40)	홈이 멈춤나사 (1/4" n=40)	1	
F-10	SN-0116-3400	D,D-1	Nut (1/4" n=40)	육각너트 (1/4" n=40)	1	
F-11	09-023A-8577	C	Saddle	흑받침	2	
F-12	09-023A-8577	D	Saddle	흑받침	1	
F-13	09-023A-8670	C-1	Saddle	흑받침	2	
F-14	09-023A-8670	D-1	Saddle	흑받침	1	
F-15	SC-0108-2350	C,C-1	Screw (M6)	육각구멍붙이 볼트 (M6)	8	
F-16	SC-0108-2350	D,D-1	Screw (M6)	육각구멍붙이 볼트 (M6)	4	
F-17	01-020W-2350	C,C-1	Washer For Saddle	포크 쥘나사 와셔	24	
F-19	GP-010086-00	C-1	Hook Cover	흑커버(조)	2	
F-20	GP-010086-00	D-1	Hook Cover	흑커버(조)	1	
F-21	GP-01087-00	C	Hook Cover	흑커버(조)	2	
F-22	GP-010087-00	D	Hook Cover	흑커버(조)	1	
F-23	SC-A170-4124	C,C-1	Screw (9/64" n=40)	홈이 바인딩 작은나사 (9/64" n=40)	4	
F-24	SC-A170-4124	D,D-1	Screw (9/64" n=40)	홈이 바인딩 작은나사 (9/64" n=40)	2	
F-25	09-049S-8670	C,C-1	Hook Cover Stopper	흑커버 스톱퍼	2	
F-26	09-049S-8670	D,D-1	Hook Cover Stopper	흑커버 스톱퍼	1	
F-27	SC-0549-2302	C,C-1	Screw (1/8" n=44)	홈이 동근납작 작은나사 (1/8" n=44)	2	
F-28	SC-0549-2302	D,D-1	Screw (1/8" n=44)	홈이 동근납작 작은나사 (1/8" n=44)	1	
F-29	09-051A-8570	D,D-1	Post Support	포스트 받침	1	
F-30	01-013S-7400	D,D-1	Screw (11/64" n=40)	홈이 동근납작 작은나사 (11/64" n=40)	4	
F-31	SC-0108-2350	D,D-1	Screw (M6)	육각 구멍붙이 보울트(M6)	4	
F-32	01-020W-2350	D,D-1	Washer For Post Support Guide	포크 쥘나사 와셔	12	
F-33	09-055A-8570	D,D-1	Post Cover	포스트 커버	1	
F-34	SC-0501-2302	D,D-1	Screw (11/64" n=40)	홈이 동근납작 작은나사 (11/64" n=40)	4	
F-35	09-057A-8670	C,C-1	Post Cover "A"	포스트 커버 "A" (2본침 전용)	2	
F-36	SC-0517-8670	C,C-1	Screw (1/8" n=44)	홈이 접시 작은나사 (1/8" n=44)	8	
F-38	09-060A-8670	C-1	Post Cover "B"	포스트 커버 "B" (2본침 전용)	2	
F-41	09-063A-8570	D,D-1	Post Cover "C"	포스트 커버 "C"	1	
F-42	SC-0517-8670	D,D-1	Screw (1/8" n=44)	홈이 접시 작은나사 (1/8" n=44)	5	
F-44	09-066A-8570	D-1	Post Cover "D"	포스트 커버 "D"	1	
F-47	09-069A-8577	D	Post Cover "E"	포스트 커버 "E"	1	
F-49	09-071A-8670	C,C-1	Post Cover "F"	포스트 커버 "F"	1	
F-50	SC-A170-4124	C,C-1	Screw (9/64" n=40)	홈이 바인딩 작은나사 (9/64" n=40)	2	
F-51	09-071A-8670	C,C-1	Post Cover "F"	포스트 커버 "F"	1	
F-52	SC-A170-4124	C,C-1	Screw (9/64" n=40)	홈이 바인딩 작은나사 (9/64" n=40)	11	
F-53	09-146C-8577	C	Cover For Saddle	흑 받침 커버(C)	2	
F-54	09-146C-8577	D	Cover For Saddle	흑 받침 커버(C)	1	

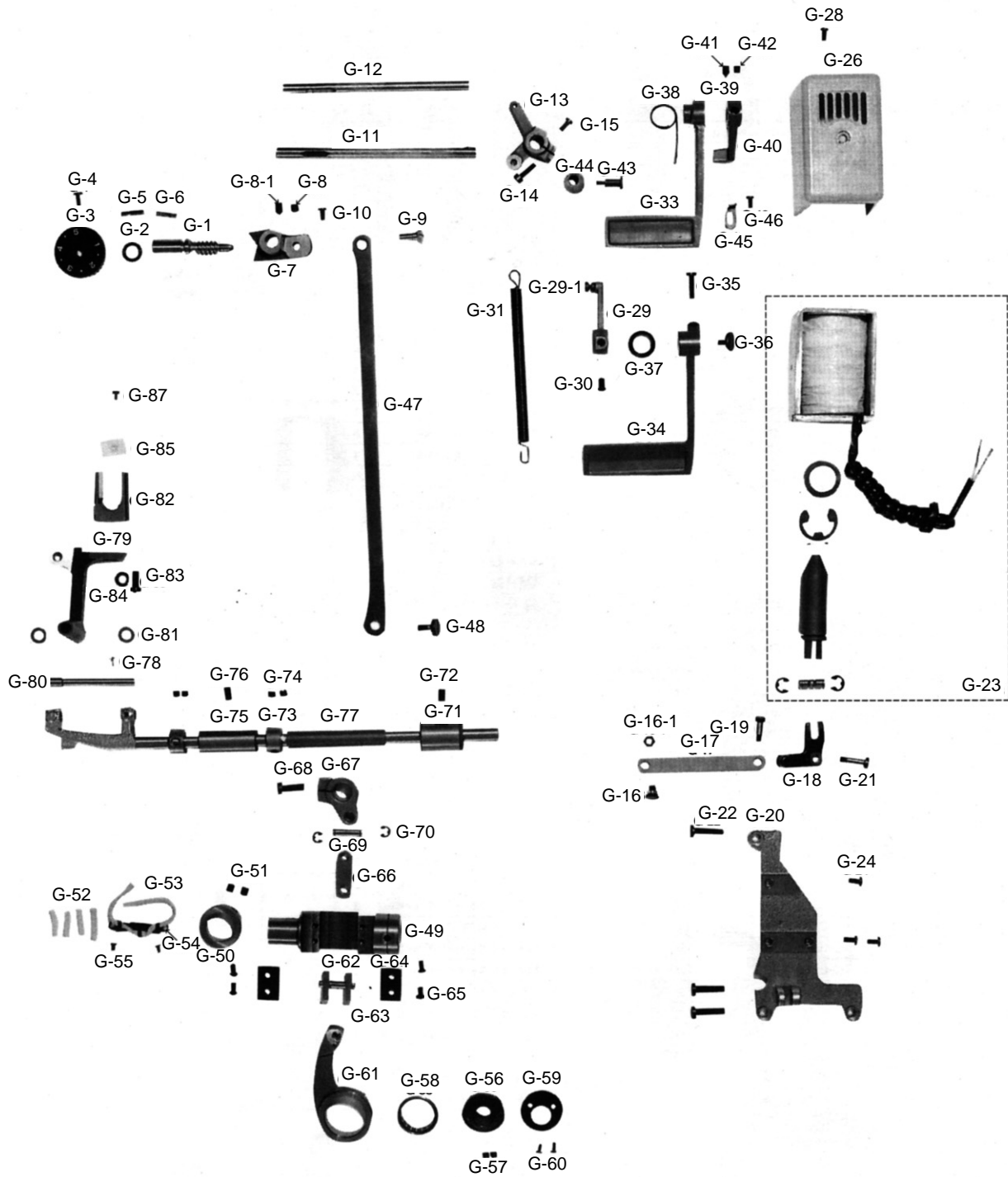
NOTE:

- ① C=KM-867-7
- C-1=KM-867
- D=KM-857-7
- D-1=KM-857



Feed Mechanism

피이드 관계





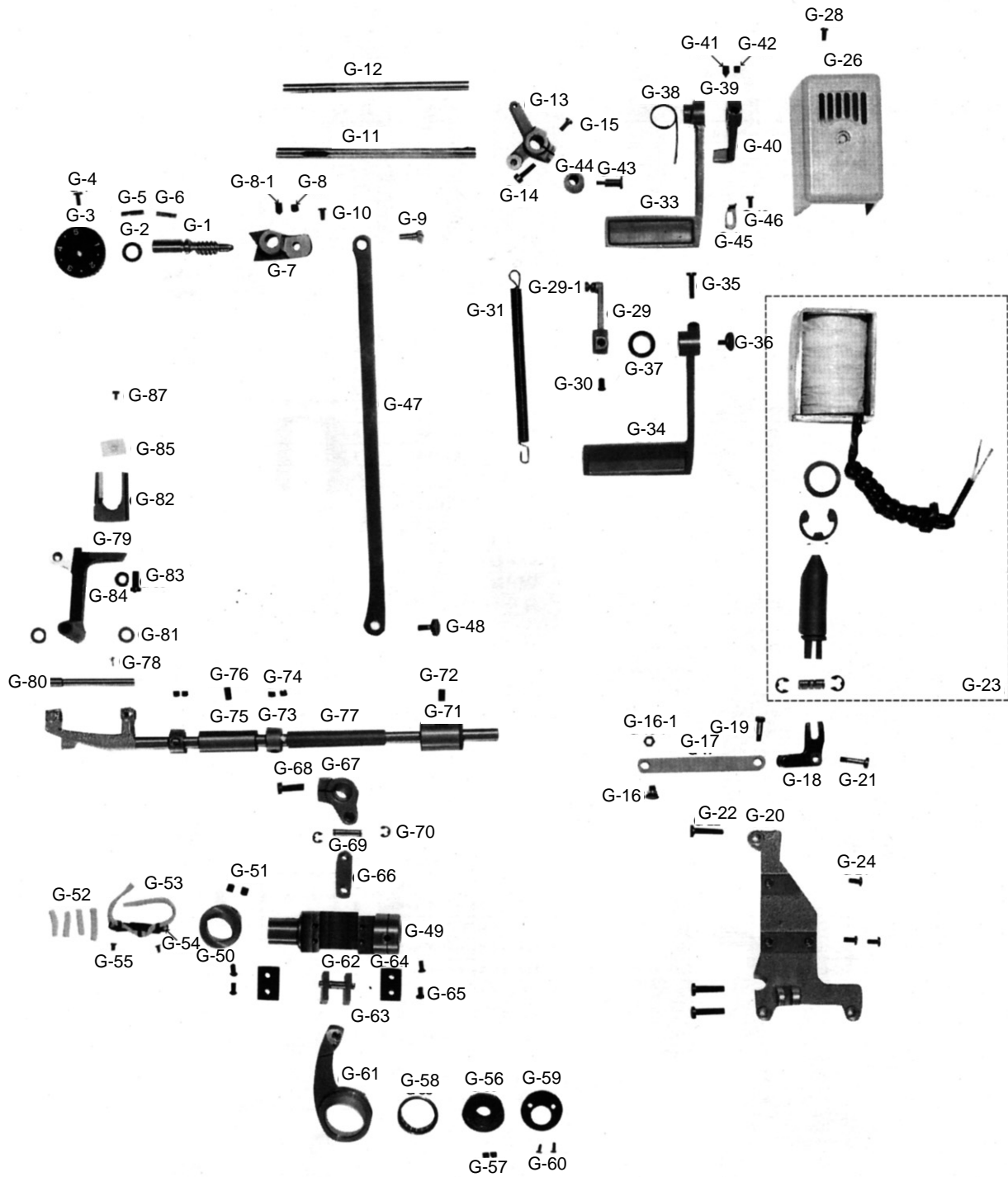
Ref. No.	Parts No.	Note	Name of Parts	품 명	Q' ty	Applied Period
G-1	GP-013504-00		Feed Regulator Dial Shaft	피이드 조절 다이알 축	1	
G-2	06-010R-1230		O-Ring For G-1	다이알 축 오링	1	
G-3	06-001A-7500		Length Control Dial Plate	다이알 문자판 (5)	1	
G-4	SC-0193-1230		Screw (3/16" n=28)	홈볼이 납작 작은나사 (3/16" n=28)	1	
G-5	06-012P-7400		Pin For G-3	다이알 핀	1	
G-6	06-027G-7400		Spring For G-3	다이알 스프링	1	
G-7	06-107A-8670		Feed Regulator	피이드 조절기 (H/P)(C)	1	
G-8	SC-A308-4517		Screw (1/4" n=40)	육각구멍볼이 멈춤나사(1/4" n=40)	1	
G-8-1	SC-A117-4417		Screw (1/4" n=40)	육각구멍볼이 멈춤나사(1/4" n=40)	1	
G-9	06-112A-7500		Feed Regulator Eccentric Wheel Shaft	피이드 조절기 편심축(C)	1	
G-10	06-024S-7400		Screw (3/16" n=32)	홈볼이 냄비 작은나사 (3/16" n=32)	1	
G-11	06-107A-8677	C,D	Reverse Feed Control Shaft	역진 레버축(C)	1	
G-12	06-108A-7500	C-1, D-1	Reverse Feed Control Shaft	역진 레버축(비사절)	1	
G-13	06-113A-8677	C,D	Reverse Crank	역진 크랭크(C)	1	
G-14	SC-0296-3900	C,D	Screw (3/16" n=32)	육각 보울트 (3/16" n=32)	1	
G-15	SC-0122-1230	C,D	Screw (15/64" n=28)	홈볼이 납작 작은나사 (15/64" n=28)	1	
G-16	06-019A-5607	C,D	Stud Screw For G-13	역진 크랭크 단나사	1	
G-16-1	SN-0101-1600	C,D	Nut (11/64" n=40)	육각 너트 (11/64" n=40)	1	
G-17	06-086A-8677	C,D	Reverse Link	백택 솔레노이드 연결링크	1	
G-18	06-118A-5607	C,D	Reverse Solenoid Crank	백택 솔레노이드 크랭크	1	
G-19	06-022A-5607	C,D	Stud Screw For G-17	역진 솔레노이드 연결 링크축(X)	1	
G-20	06-123A-8677	C,D	Reverse Solenoid Bracket	백택 솔레노이드 브라켓	1	
G-21	06-024A-5607	C,D	Stud Screw For G-18	백택 솔레노이드 크랭크 축	1	
G-22	SC-0551-5607	C,D	Screw (1/4" n=28)	홈볼이 냄비 작은나사 (1/4" n=28)	3	
G-23	06-026A-5607	C,D	Reverse Solenoid Assembly(4)	백택 솔레노이드(조)	1	
G-24	SC-0307-1230	C,D	Screw (3/16" n=32)	홈볼이 냄비 작은나사 (3/16" n=32)	3	
G-26	26-029A-5607	C,D	Reverse Solenoid Cover	백택 솔레노이드 커버(X)	1	
G-28	06-024S-7400	C,D	Screw (3/16" n=32)	홈볼이 냄비 작은나사 (3/16" n=32)	1	
G-29	06-032A-8670	C-1, D-1	Link For Reverse Lever Spring	역진 레버 스프링 링크	1	
G-29-1	06-018P-7400	C-1, D-1	Roller For Spring Hook	레버축 스프링 걸이핀	1	
G-30	SC-0122-1230	C-1, D-1	Screw (15/64" n=28)	홈볼이 납작 작은나사 (15/64" n=28)	1	
G-31	06-003G-8677		Reverse Lever Return Spring	역진 레버 스프링	1	
G-33	GP-012781-01	C,D	Reverse Feed Control Lever	역진 레버(사절)	1	
	06-061A-7507	C,D	Reverse Feed Control Lever	역진 레버(사절)	1	
G-34	06-062A-7500	C-1, D-1	Reverse Lever	역진 레버(비사절)	1	
G-35	SC-0186-1230	C-1, D-1	Screw (3/16" n=32)	홈볼이 냄비 작은나사 (3/16" n=32)	1	
G-36	SC-0185-1230	C-1, D-1	Screw (3/16" n=32)	홈볼이 바이딩 작은나사 (3/16" n=32)	1	
G-37	06-053W-1230	C-1, D-1	Washer For G-34	레버 와셔	1	
G-38	06-066G-7507	C,D	Reverse Lever Spring(A)	역진 레버 스프링(A)	1	
G-39	06-143W-5607	C,D	Washer For G-40	역진 레버 와셔	2	
G-40	GP-018765-02	C,D	Auto Reverse Lever	역진 레버 B(K2888)	1	
G-41	SC-A117-4417	C,D	Screw (1/4" n=40)	육각구멍볼이 멈춤나사 (1/4" n=40)	1	
G-42	SC-A308-4517	C,D	Screw (1/4" n=40)	육각구멍볼이 멈춤나사 (1/4" n=40)	1	
G-43	06-071S-7507	C,D	Stud Screw For G-44	역진 레버 스톱퍼(상) 단나사	1	
G-44	06-072R-7507	C,D	Upper Stopper Rubber For Reverse Lever	역진 레버 스톱퍼(상) 고무	1	
G-45	06-022C-7400		Reverse Lever Stopper (Lower)	역진 레버 스톱퍼	1	

NOTE:

- ① C=KM-867-7
- C-1=KM-867
- D=KM-857-7
- D-1=KM-857



Feed Mechanism 피이드 관계

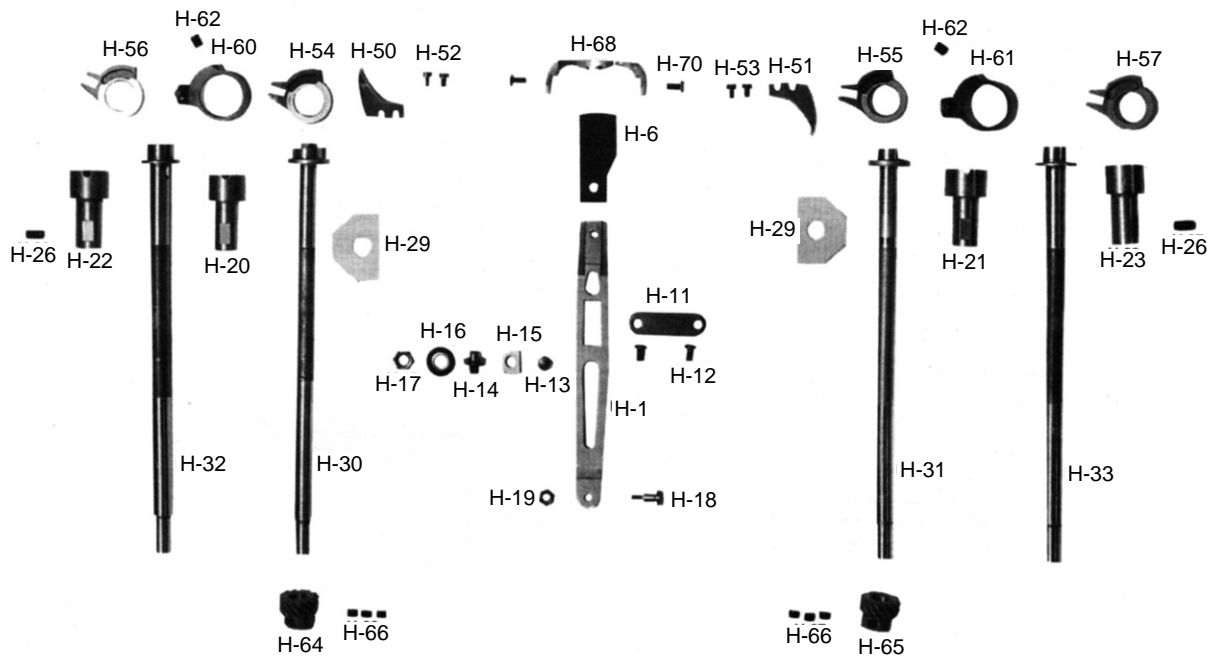
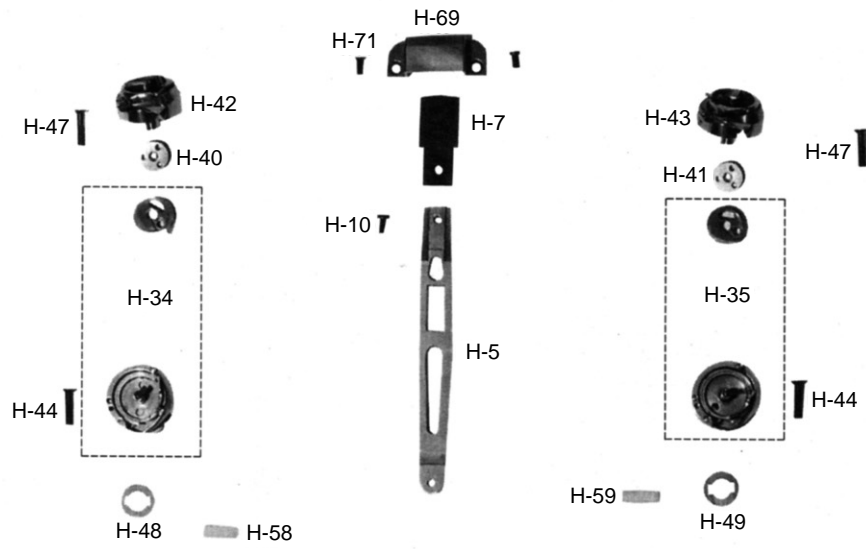


Ref. No.	Parts No.	Note	Name of Parts	품 명	Q' ty	Applied Period
G-46	SC-0543-2302		Screw (11/64" n = 40)	홈볼이 납작 작은나사 (11/64" n=40)	1	
G-47	06-051A-8670		Feed Regulator Connecting Rod	절환기 연결 로드 (H/P)	1	
G-48	06-015A-7500		Stud Screw For G-47	절환기 연결 로드 단나사	1	
G-49	06-116A-8670		Feed Regulator Shaft	절환기(C)	1	
G-50	07-252A-5607		Stopper Collar For G-49	절환기 스톱퍼 카라(C)	1	
G-51	SC-0317-2700		Screw (15/64" n = 28)	육각구멍볼이 멈춤나사 (15/64" n=28)	2	
G-52	06-033M-7400		Felt For G-49	절환기 felt	4	
G-53	44-0000-1230		Oil Wick	유심	1	
G-54	44-058C-5607		Wick Holder For G-49	절환기 유심잡이	1	
G-55	SC-0549-2302		Screw (1/8" n = 44)	홈볼이 둥근납작 작은나사 (1/8" n=44)	2	
G-56	GP-020929-00		Feed Cam	피드 캠 (S)	1	
G-57	SC-A308-4517		Screw (1/4" n = 40)	육각구멍볼이 멈춤나사 (1/4" n=40)	2	
G-58	06-036A-7400		Needle Bearing For G-56	니들 베어링	1	
G-59	06-024A-7500		Bearing Cover For Feed Cam	피이드 캠 베어링 커버	1	
G-60	SC-A301-4119		Screw (9/64" n = 40)	홈볼이 접시 작은나사 (9/64" n=40)	2	
G-61	06-135A-7400		Feed Cam Connecting Rod	베어링 로드(C)	1	
G-62	06-132P-7400		Slide Block Shaft	베어링 로드 연결 핀(C)	1	
G-63	15-220A-7900		Slide Block	슬라이드 블록 (절환기)	2	
G-64	06-129A-7500		Slide Block Guide Plate	슬라이드 블록 안내판	2	
G-65	SC-0543-2302		Screw (11/64" n = 40)	홈볼이 납작 작은나사 (11/64" n=40)	4	
G-66	06-137A-7400		Level Feed Connecting Link	수평피이드 연결 링크 (KS007)(C)	1	
G-67	06-141A-7400		Level Feed Crank	수평밀대 크랭크(C)	1	
G-68	SC-0253-7400		Screw (1/4" n = 24)	홈볼이 납비 작은나사 (1/4" n=24)	1	
G-69	06-140P-7400		Pin For G-67	연결핀(C)	1	
G-70	06-020C-7400		E-Ring (Ø 6)	E링 (Ø 6)	2	
G-71	06-139A-7400		Feed Rock Shaft Bushing (R)	수평밀대 뒷부싱(C)	1	
G-72	SC-0507-1230		Screw (15/64" n = 28)	홈볼이 멈춤나사 (15/64" n=28)	1	
G-73	06-142A-7400		Collar For G-77	수평밀대 카라(C)	2	
G-74	SC-0129-7400		Screw (1/4" n = 40)	홈볼이 멈춤나사 (1/4" n=40)	4	
G-75	06-143A-7400		Feed Rock Shaft Bushing (Front)	수평밀대 앞부싱(C)	1	
G-76	SC-0507-1230		Screw (15/64" n = 28)	홈볼이 멈춤나사 (15/64" n=28)	1	
G-77	06-179A-5607		Feed Rock Shaft	수평밀대(C)	1	
G-78	SC-0128-7400		Screw (11/64" n = 40)	홈볼이 납비 작은나사 (11/64" n=40)	1	
G-79	06-106A-8270		Feed Bar	톱니 받침(C)	1	
G-80	06-147A-7400		Feed Bar Shaft	톱니 받침축(C)	1	
G-81	06-046W-7400		Washer For Feed Bar Shaft	톱니 받침 축 와셔	2	
G-82	06-152A-7400		Feed Bar Fork	톱니 받침 포오크 (KSM004)(C)	1	
G-83	SC-0106-7400		Screw (15/64" n = 28)	육각 보울트(15/64" n=28)	1	
G-84	06-051W-7400		Washer For Feed Bar Fork	포크 줍나사 와셔(C)	1	
G-85	06-053M-7400		Felt For Feed Bar Fork	포크 felt	1	
G-87	SC-A301-4119		Screw (9/64" n = 40)	홈볼이 둥근납작 작은나사 (9/64" n=40)	1	

NOTE:

- ① C=KM-867-7
- C-1=KM-867
- D=KM-857-7
- D-1=KM-857

Feed Dog Lever & Hook Mechanism 톱니 레버 및 훅 관계



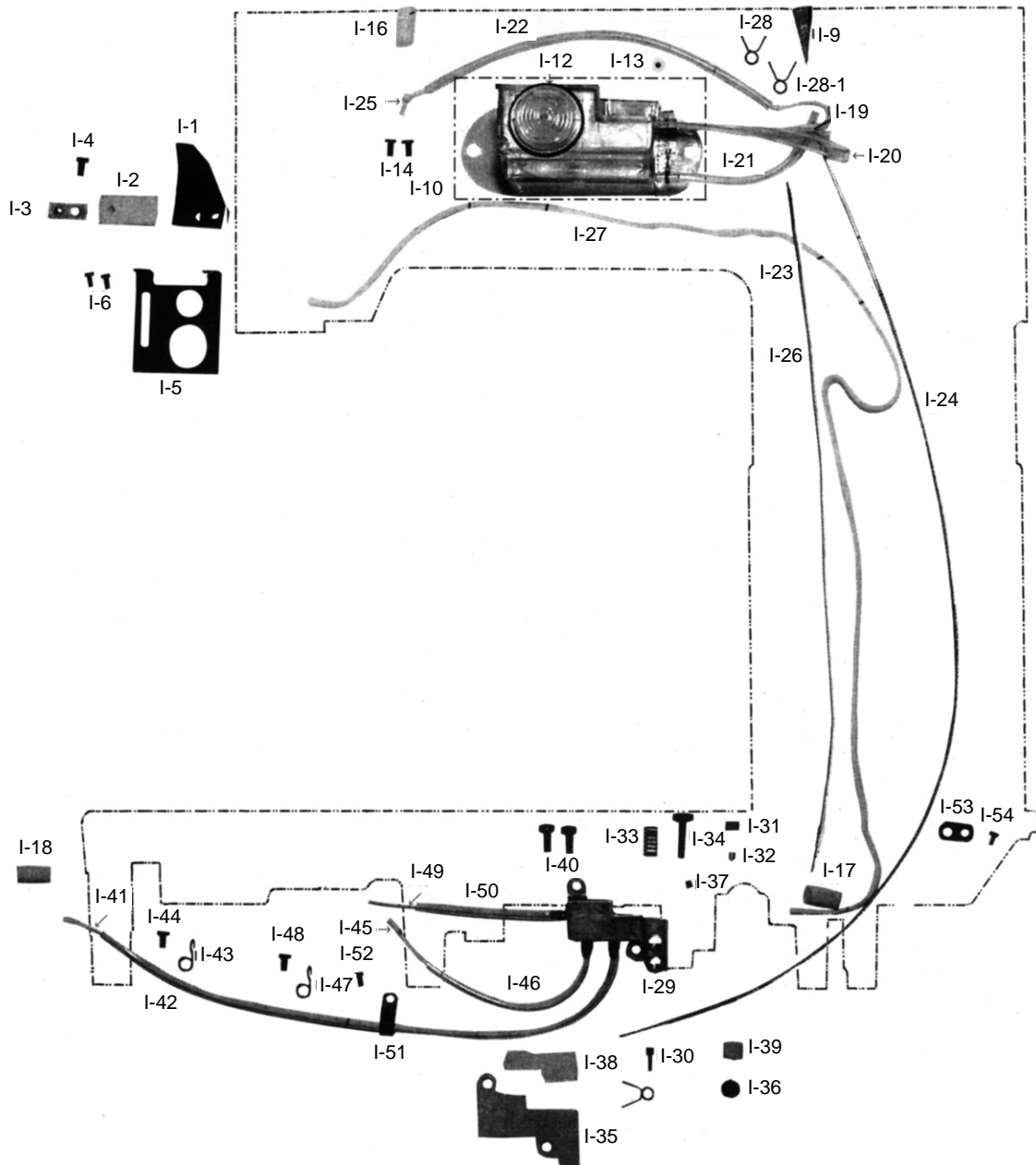
Ref. No.	Parts No.	Note	Name of Parts	품 명	Q' ty	Applied Period
H-1	GP-022421-00	C,C-1	Lever For Feed Dog	톱니 레버	1	
H-5	GP-022421-00	D,D-1	Lever For Feed Dog	톱니 레버	1	
H-6 *	06-012A-8270	C,C-1	Feed Dog (3/32)	톱니 (3/32)	1	
H-7	09-079A-8570	D,D-1	Feed Dog	톱니	1	
H-10	SC-0175-1230	D,D-1	Screw (11/64" n=40)	홈볼이 납작 작은나사 (11/64" n=40)	1	
H-11	09-005C-8270	C,C-1	Feed Dog Lever Retainer Washer	톱니 레버 보강판	1	
H-12	SC-0543-2302	C,C-1	Screw (11/64" n=40)	홈볼이 납작 작은나사 (11/64" n=40)	2	
H-13	09-008S-8270		Screw For Feed Dog Lever Slide Block	슬라이더 블록 매개나사	1	
H-14	09-006S-8270		Shaft Feed Dog Lever Slide Block	슬라이더 블록 나사	1	
H-15	09-107A-8270		Feed Dog Lever Slide Block	톱니 레버 슬라이드 블록	1	
H-16	09-009W-8270		Washer For H-15	슬라이드 블록 와셔	1	
H-17	SN-0116-8270		Nut (1/4" n=40)	육각너트 (1/4" n=40)	1	
H-18	06-008S-8270		Stud Screw For Feed Bar	톱니 받침나사	1	
H-19	SN-0101-1600		Nut (3/16" n=32)	육각너트 (3/16" n=32)	1	
H-20	09-127A-8677	C	Bushing For Hook Shaft	흑축 붓싱 (사절)	2	
H-21	09-127A-8677	D	Bushing For Hook Shaft	흑축 붓싱 (사절)	1	
H-22	09-128A-8670	C-1	Bushing For Hook Shaft	흑축 붓싱 (비사절)	2	
H-23	09-128A-8670	D-1	Bushing For Hook Shaft	흑축 붓싱 (비사절)	1	
H-26	SC-0508-1230	C,C-1	Screw (15/64" n=28)	홈볼이 멈춤나사 (15/64" n=28)	3	
H-29	44-029M-8670	D,D-1	Hook Shaft Felt	흑축 급유 헬트	3	
H-30	09-130A-8677	C	Hook Shaft	흑축 (사절)	2	
H-31	09-130A-8677	D	Hook Shaft	흑축 (사절)	1	
H-32	09-131A-8670	C-1	Hook Shaft	흑축 (비사절)	2	
H-33	09-131A-8670	D-1	Hook Shaft	흑축 (비사절)	1	
H-34	09-031A-8577	C	Hook	가마 HPF-490A (5) TR/CP	2	
H-35	09-031A-8577	D	Hook	가마 HPF-490A (5) TR/CP	1	
H-40	07-160A-7500	C,C-1	Bobbin	실토리 (보빈) 표준	2	
H-41	07-160A-7500	D,D-1	Bobbin	실토리 (보빈) 표준	1	
H-42	09-036A-8570	C-1	Hook	가마 HSH-31 (6)	2	
H-43	09-036A-8570	D-1	Hook	가마 HSH-31 (6)	1	
H-44	SC-0147-8270	C	Screw (M5×0.8)	접시머리 볼트 (M5×0.8)	3	
H-47	SC-0161-8677	D-1	Screw (9/64" n=40)	접시머리 볼트 (9/64" n=40)	3	
H-48	09-039W-8677	C	Hook Washer	흑 받침 와셔	2	
H-49	09-039W-8677	D	Hook Washer	흑 받침 와셔	1	
H-50	09-140A-8670	C,C-1	Opener	보빈 케이스 오프너(C)	2	
H-51	09-140A-8670	D,D-1	Opener	보빈 케이스 오프너(C)	1	
H-52	SC-A131-4522	C,C-1	Screw (1/8" n=44)	홈볼이 납작 작은나사 (1/8" n=44)	4	
H-53	SC-A131-4522	D,D-1	Screw (1/8" n=44)	홈볼이 납작 작은나사 (1/8" n=44)	2	
H-54	09-142A-8677	C	Opener Holder	오프너 홀더 (사절)	2	
H-55	09-142A-8677	D	Opener Holder	오프너 홀더 (사절)	1	
H-56	09-042A-8670	C-1	Opener Holder	오프너 홀더 (비사절)	2	
H-57	09-042A-8670	D-1	Opener Holder	오프너 홀더 (비사절)	1	
H-58	44-030M-8670	C,C-1	Opener Holder Felt	오프너 잡이 헬트	2	
H-59	44-030M-8670	D,D-1	Opener Holder Felt	오프너 잡이 헬트	1	
H-60	09-144A-8670	C,C-1	Opener Stopper	오프너 위치 스톱퍼	2	
H-61	09-144A-8670	D,D-1	Opener Stopper	오프너 위치 스톱퍼	1	
H-62	SC-0508-1230	C,C-1	Screw (15/64" n=28)	홈볼이 멈춤나사 (15/64" n=28)	3	
H-64	09-002A-7400	C,C-1	Hook Shaft Gear	기어 (소)	2	
H-65	09-002A-7400	D,D-1	Hook Shaft Gear	기어 (소)	1	
H-66	SC-A550-4517	C,C-1	Screw (1/4" n=40)	홈볼이 멈춤나사 (1/4" n=40)	9	
H-68 *	09-079A-8670	C,C-1	Needle Plate	침판 3/32	1	
H-69	09-080A-8570	D,D-1	Needle Plate	침판	1	
H-70	09-081S-8670	D,D-1	Screw For Needle Plate	바늘판 쥘나사	2	
H-71	SC-0302-8260	C,C-1	Screw (11/64" n=40)	접시머리 볼트 (11/64" n=40)	2	
H-72 *	GP-021129-00	C,C-1	Needle Plate(Cap)	침판(모자용)	1	

NOTE:

- ① C=KM-867-7
C-1=KM-867
D=KM-857-7
D-1=KM-857
- ② The " * " Mark is Option Parts

Lubrication

급유 관계

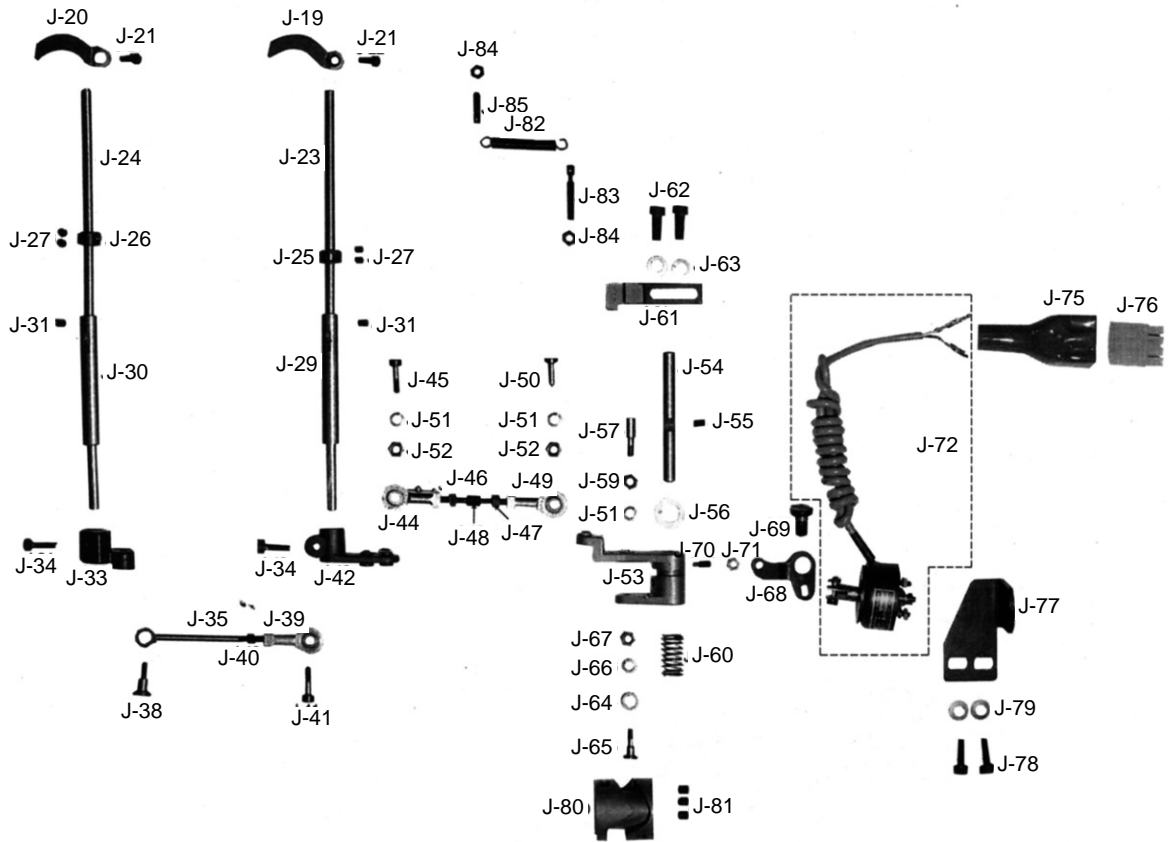
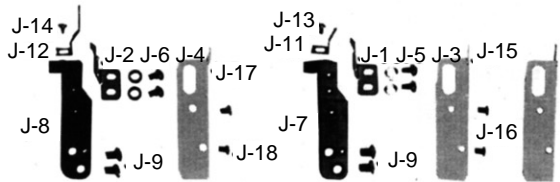




Ref. No.	Parts No.	Note	Name of Parts	품 명	Q' ty	Applied Period
I-1	44-133C-7500		Oil Cover	유방판(C)	1	
I-2	44-016M-7400		Oil Felt For Thread Take-Up	실채기 급유 헬트(6-14)	1	
I-3	GP-009931-00		Oil Tube Choke Plate	기름막이 누름판	1	
I-4	06-024S-7400		Screw (3/16" n=32)	홈볼이 냄비 작은나사 (3/16" n=32)	1	
I-5	44-004A-7500		Dust Protector	먼지막이 판	1	
I-6	SC-0502-2302		Screw (9/64" n=40)	홈볼이 동근납작 작은나사 (9/64" n=40)	2	
I-9	44-009M-7500		Oil Filter	오일 필터	1	
I-10	44-014A-7500		Oil Tank Assembly	오일탱크 (조)	1	
I-12	44-144M-7500		O-Ring	오링	1	
I-13	44-021R-7400		Rubber Cap	베드 기름 마개	1	
I-14	SC-0307-4122		Screw (11/64" n=40)	홈볼이 납작 작은나사 (11/64" n=40)	2	
I-16	44-019M-7400		Felt (B)	흑 몸체 전봇싱 헬트 (6-19)	2	
I-17	44-019M-7400		Oil Felt	흑 몸체 전봇싱 헬트 (6-19)	1	
I-18	07-003M-7400		Oil Felt	하측 앞봇싱 마개 헬트 (5-3)	1	
I-19	GP-034904-00		Oil Hose (L)	오일 탱크 호스 (6×9×130M/M)	2	
I-20	GP-034901-00		Oil Hose (S)	환류 파이프	1	
I-21	GP-034901-00		Oil Hose (Ø 3)	환류 파이프	2	
I-22	GP-034901-00		Oil Hose (Thread Take-Up)	환류 파이프	1	
I-23	GP-034901-00		Oil Hose (Feed Regulator Shaft)	환류 파이프	1	
I-24	GP-034901-00		Oil Hose (Oil Supply Terminal)	환류 파이프	1	
I-25	44-0000-1230		Oil wick	유심	1	
I-26	44-0000-1230		Oil wick	유심	1	
I-27	44-0000-1230		Oil wick	유심	1	
I-28	44-001C-1230		Tube Holder Spring	오일 호스 집게	4	
I-28-1	44-201A-1230		Tube Holder Spring (L)	오일 호스 집게	1	
I-29	44-072A-8670		Oil Supply Terminal Case	급유 터미널 케이스	1	
I-30	44-010C-1600		Oil Tube Pin	환류 파이프 니플	4	
I-31	44-094R-7500		Oil Adjusting Rubber	유량조절 고무	1	
I-32	44-095P-7500		Oil Adjusting Pin	유량조절 핀	1	
I-33	44-076G-8670		Spring For Oil Supply Adjusting Screw	유량조절 나사 고정 스프링	1	
I-34	SC-0141-8670		Screw (1/4" n=28)	홈볼이 납작 작은나사 (1/4" n=28)	1	
I-35	44-078A-8670		Gasket For Oil Supply Terminal	급유 터미널 가스켓	1	
I-36	04-104R-1230		Rubber Cap (L) For Oil Supply Terminal	바늘대 상봇싱 마개 (흰색) 40	1	
I-37	09-042R-7400		Cap (S) For Oil Supply Terminal	가마토대 기름마개	1	
I-38	44-081M-8670		Felt (A) For Oil Supply Terminal	급유 터미널 헬트 (A)	1	
I-39	44-082M-8670		Felt (B) For Oil Supply Terminal	급유 터미널 헬트 (B)	1	
I-40	SC-0307-1230		Screw (3/16" n=32)	홈볼이 납작 작은나사 (3/16" n=32)	2	
I-41	44-0000-1230		Oil wick	유심	1	
I-42	GP-034901-00		Oil Hose For Lower Shaft Bushing (F)	환류 파이프	1	
I-43	44-026G-7400		Tube Holder	헬트잡이 스프링	1	
I-44	SC-0531-4125		Screw (9/64" n=40)	홈볼이 동근납작 작은나사 (9/64" n=40)	1	
I-45	44-0000-1230		Oil wick	유심	1	
I-46	GP-034901-00		Oil Hose For Lower Shaft Bushing (M)	환류 파이프	1	
I-47	44-026G-7400		Tube Holder	헬트잡이 스프링	4	
I-48	SC-0531-2302		Screw (9/64" n=40)	홈볼이 동근납작 작은나사 (9/64" n=40)	3	
I-49	44-0000-1230		Oil wick	유심	1	
I-50	GP-034901-00		Oil Hose For Feed Rock Bushing (F)	환류 파이프	1	
I-51	44-111C-7400		Oil Wick Setting Plate	유심 헬트 고정판 (6-7)	1	
I-52	SC-0531-2302		Screw (9/64" n=40)	홈볼이 동근납작 작은나사 (9/64" n=40)	1	
I-53	44-084M-7500		Supporter For Oil Terminal Tube	오일 터미널 튜브 지지판	1	
I-54	SC-0531-2302		Screw (9/64" n=40)	홈볼이 동근납작 작은나사 (9/64" n=40)	1	

NOTE:

- ① C=KM-867-7
- C-1=KM-867
- D=KM-857-7
- D-1=KM-857



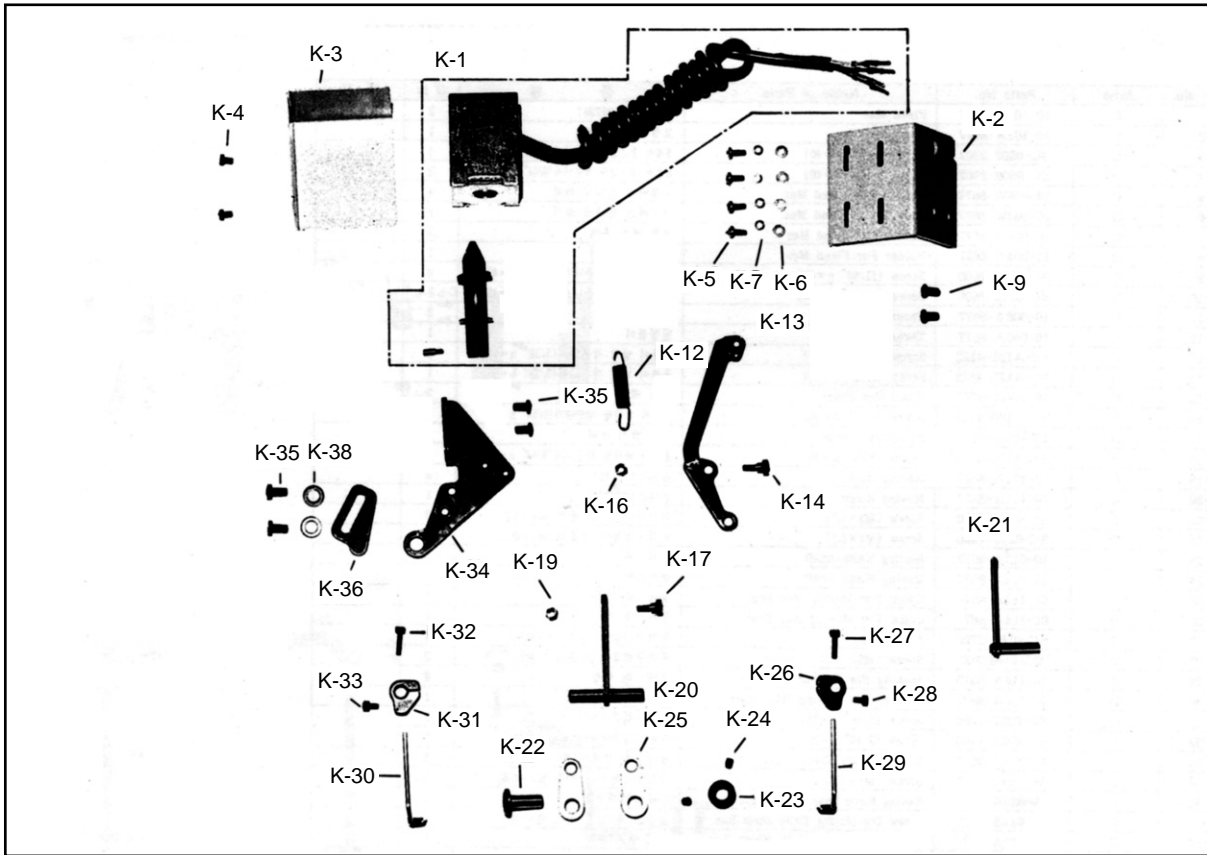


Ref. No.	Parts No.	Note	Name of Parts	품명	Q' ty	Applied Period
J-1	GP-025627-00	C	Fixed Mes	고정 메스 (37728)	2	
J-2	GP-025627-00	D	Fixed Mes	고정 메스 (37728)	1	
J-3	SC-0502-2302	C	Screw (9/64" n=40)	흡블이 동근납작 작은나사 (9/64" n=40)	4	
J-4	SC-0502-2302	D	Screw (9/64" n=40)	흡블이 동근납작 작은나사 (9/64" n=40)	2	
J-6	10-003W-8677	C	Washer For Fixed Mes	고정 메스 쥘나사 와셔	4	
J-6	10-003W-8677	D	Washer For Fixed Mes	고정 메스 쥘나사 와셔	2	
J-8	10-004A-8677	C	Holder For Fixed Mes	고정 메스 홀더	2	
J-8	10-004A-8677	D	Holder For Fixed Mes	고정 메스 홀더	1	
J-9	SC-0119-7600	C	Screw (11/64" n=40)	흡블이 겹지 작은나사 (11/64" n=40)	3	
J-11	10-006A-8677	C	Thread Catcher	밀싹잡이	2	
J-12	10-006A-8677	D	Thread Catcher	밀싹잡이	1	
J-13	SC-A121-4122	C	Screw (3/32" n=56)	흡블이 납작 작은나사 (3/32" n=56)	2	
J-14	SC-A121-4122	D	Screw (3/32" n=56)	흡블이 납작 작은나사 (3/32" n=56)	1	
J-15	10-108A-8677	C	Fixed Mes Cover	고정 메스 커버	2	
J-16	SC-A170-4124	C	Screw (9/64" n=40)	흡블이 비인딩 작은나사 (9/64" n=40)	4	
J-17	10-109A-8577	D	Fixed Mes Cover	고정 메스 커버	1	
J-18	SC-A170-4124	D	Screw (9/64" n=40)	흡블이 비인딩 작은나사 (9/64" n=40)	2	
J-19	10-111A-8670	C	Moving Knife	동메스 (37720)	2	
J-20	10-111A-8670	D	Moving Knife	동메스 (37720)	1	
J-21	SC-0211-7500	C	Screw (M4×0.7)	육각구멍볼이 보울트 (M4×0.7)	3	
J-23	10-113A-8677	C	Moving Knife Shaft	동메스축(C)	2	
J-24	10-113A-8677	D	Moving Knife Shaft	동메스축(C)	1	
J-25	10-114A-8677	C	Collar For Moving Mes Shaft	동메스축 카라	2	
J-26	10-114A-8677	D	Collar For Moving Mes Shaft	동메스축 카라	1	
J-27	SC-0164-2700	C	Screw (M5)	육각구멍볼이 멈춤나사 (M5)	6	
J-29	10-116A-8677	C	Bushing For Moving For Mes Shaft	동메스축 붓싱	2	
J-30	10-116A-8677	D	Bushing For Moving For Mes Shaft	동메스축 붓싱	1	
J-31	SC-0352-7400	C	Screw (3/16" n=28)	흡블이 멈춤나사 (3/16" n=28)	3	
J-33	10-118A-8677	C	Moving Knife Shaft Crank (L)	동메스축 크랭크 (좌)(C)	1	
J-34	SC-0162-5607	C	Screw (M5×0.8)	육각구멍볼이 보울트 (M5×0.8)	2	
J-35#	10-120A-8677	C	Moving Knife Shaft Connection Rod	동메스 축 연결 로드(C)	1	
J-38	10-021S-8677	C	Screw For Moving Knife Shaft Rod	동메스 축 연결 로드 쥘나사	1	
J-39	10-220A-8577	C	Joint For Moving Knife Shaft Rod	로드 엔드 (좌)	1	
J-40	10-033C-7507	C	Nut For Joint	볼 조인트 쥘너트 (우)	1	
J-41	10-024S-8677	C	Stud Screw For J-39	동메스 축 연결 조인트 쥘나사	1	
J-42	10-126A-8677	C, D	Moving Knife Shaft Crank (R)	동메스 축 크랭크 (우)	1	
J-44	10-221A-8577	C, D	Connection Joint (L) For J-42	로드 엔드 (좌)	1	
J-45	10-024S-8677	C, D	Stud Screw For J-44	동메스 축 연결 조인트 쥘나사	1	
J-46	10-036C-7507	C, D	Nut (L) For J-44	볼 조인트 쥘너트 (좌)	1	
J-47	10-033C-7507	C, D	Nut (R) For J-44	볼 조인트 쥘너트 (우)	1	
J-48	10-034A-7507	C, D	Length Adjusting Rod	볼 조인트 연결봉 (1/16"-1/2")	1	
J-49	10-220A-8577	C, D	Joint (R) For Thread Trimming Rock Link	로드 엔드 (우)	1	
J-50	10-034S-7507	C, D	Stud Screw For J-49	요동 링크 연결 조인트 단나사	1	
J-51	07-011W-1230	C, D	Washer For J-49	가마잡이 와셔	2	
J-52	10-033C-7507	C, D	Nut (R) For J-49	볼 조인트 쥘너트 (우)	1	
J-53	10-034A-8677	C, D	Thread Trimming Rock Link	사절요동 링크 (H/P)	1	
J-54	10-013A-7507	C, D	Thread Trimming Rocker Link Shaft	사절요동 링크 축	1	
J-55	10-017S-8577	C, D	Screw For J-54	동메스 축 붓싱 고정나사	1	
J-56	10-044R-5607	C, D	Cushion Rubber	쿠션고무 (B)	1	
J-57	10-050S-8577	C, D	Stopper Pin Screw	스토퍼 핀 나사	1	
J-59	10-033C-7507	C, D	Nut For Stopper Pin Screw	볼 조인트 쥘너트 (우)	1	
J-60	41-288G-7500	C, D	Stopper Pin Return Spring	스토퍼핀 복귀 스프링	1	
J-61	10-129A-7507	C, D	Holder For Stopper Pin	사절 캠 운동 핀 홀더	1	
J-62	SC-0108-2350	C, D	Screw (M6)	육각구멍볼이 보울트 (M6)	2	
J-63	01-020W-2350	C, D	Washer For J-61	싱크로 베이스 스프링 와셔 (Ø6)	2	
J-64	10-166A-7507	C, D	Roller For Thread Trimming Cam	로울러(C)	1	
J-65	10-067S-7507	C, D	Stud Screw For J-64	사절 캠 로울러 단나사	1	
J-66	07-011W-1230	C, D	Washer For J-65	가마잡이 와셔	1	
J-67	10-033C-7507	C, D	Nut For J-65	볼 조인트 쥘너트 (우)	1	
J-68	10-554A-7507	C, D	Clutch Lever	클러치 레버	1	
J-69	10-053S-7507	C, D	Stud Screw For Clutch Lever	클러치 레버 단나사	1	
J-70	10-551S-7507	C, D	Clutch Lever Pin Screw	클러치 레버 핀 나사	1	
J-71	SN-0101-1600	C, D	Nut (11/64" n=40)	육각너트 (11/64" n=40)	1	
J-72	10-056A-7507	C, D	Thread Trimming Solenoid Ass'y (4)	사절 솔레노이드 (조)	1	
J-75	11-019M-2350	C, D	Tube For J-72	솔레노이드 튜브	1	
J-76	11-018M-2350	C, D	Plug For J-72	솔레노이드 플러그	1	
J-77	GP-037285-00	C, D	Trimming Solenoid Bracket	사절 솔레노이드 브라켓	1	
J-78	SC-0109-2350	C, D	Screw (M6)	육각구멍볼이 보울트 (M6)	2	
J-79	01-020W-2350	C, D	Washer For J-77	싱크로 베이스 스프링 와셔 (Ø6)	4	
J-80	GP-015702-00	C, D	Thread Trimming Cam	사절캠	1	
J-81	SC-A308-4517	C, D	Screw (1/4" n=40)	육각구멍볼이 멈춤나사 (1/4" n=40)	3	
J-82	10-021G-7507	C, D	Thread Trimming Return Spring	사절 리턴 스프링	1	
J-83	06-040S-1600	C, D	Adjusting Screw (A) For Return Spring	스프링 걸이 축 나사	1	
J-84	SN-0101-1610	C, D	Nut (11/64" n=40)	육각너트 (11/64" n=40)	2	
J-85	10-019S-7507	C, D	Adjusting Screw (B) For Return Spring	리턴 스프링걸이 축 나사	1	

NOTE:

- ① C=KM-867-7
C-1=KM-867
D=KM-857-7
D-1=KM-857
- ② Refer to page 30 for items marked with an asterisk (#)

Wiper Mechanism 와이퍼 관계



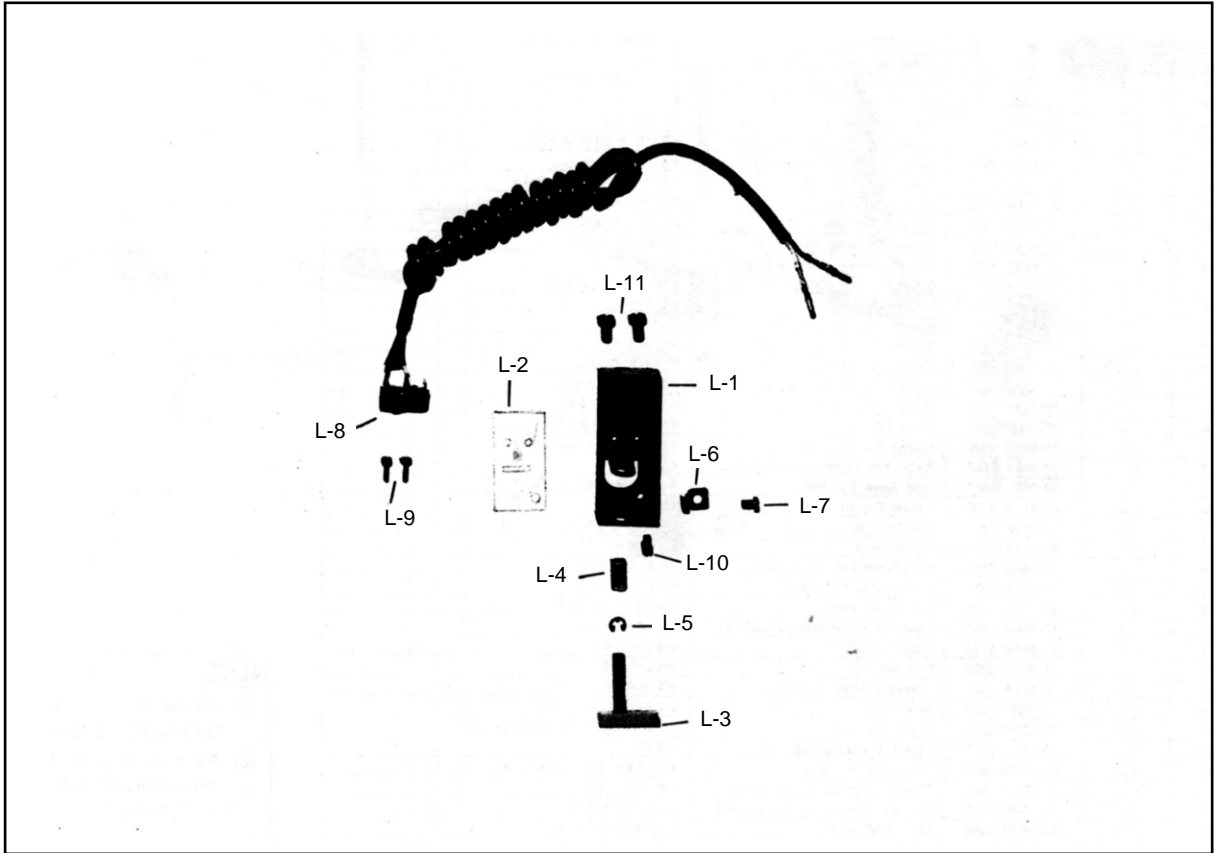
Ref. No.	Parts No.	Note	Name of Parts	품명	Q' ty	Applied Period
K-1	11-001A-8677	C, D	Wiper Solenoid Ass'y (4)	와이퍼 솔레노이드(조)	1	
K-2	11-102A-7507	C, D	Wiper Solenoid Bracket	와이퍼 솔레노이드 브라켓(C)	1	
K-3	11-003A-7507	C, D	Wiper Solenoid Cover	와이퍼 솔레노이드 커버	1	
K-4	SC-0531-2302	C, D	Screw (9/64" n=40)	홈볼이 등근납작 작은나사 (9/64" n=40)	3	
K-5	10-061S-9577	C, D	Screw (M3×0.5)	홈볼이 넵비 작은나사 (M3×0.5)	4	
K-6	10-061S-9577	C, D	Washer For K-1	솔레노이드 부착 평와셔	4	
K-7	10-061S-9577	C, D	Spring Washer For K-1	솔레노이드 부착 스프링 와셔	1	
K-9	SC-0179-3710	C, D	Screw (11/64" n=40)	홈볼이 납작 작은나사 (11/64" n=40)	2	
K-12	11-013G-7507	C, D	Return Spring For K-1	와이퍼 솔레노이드 리턴 스프링	1	
K-13	11-014A-7507	C, D	Link "A" Ass'y	와이퍼 링크 A (조)	1	
K-14	11-015S-7507	C, D	Stud Screw For K-13-3	와이퍼 링크 A 연결 단나사	1	
K-16	11-017C-7507	C, D	Nut For K-13-3	와이퍼 링크 A 연결 단나사 너트	1	
K-17	11-015S-7507	C, D	Stud Screw For K-21-1, K-22-1	와이퍼 링크 A 연결 단나사	1	
K-19	11-017C-7507	C, D	Stud Nut For K-20-1, K-21-1	와이퍼 링크 A 연결 단나사 너트	1	
K-20	11-021A-7507	C	Wiper Shaft Ass'y	와이퍼 가이드 축(조) - 40MM	1	
K-21	11-021A-8577	D	Wiper Shaft Ass'y	와이퍼 가이드 축(조) - 29.5MM	1	
K-22	11-022A-7507	C, D	Wiper Link Shaft	와이퍼 링크축	1	
K-23	11-023A-7507	C, D	Collar For K-22	와이퍼 링크축 카라	1	
K-24	SC-0105-7500	C, D	Screw (M4)	육각구멍볼이 멈춤나사(M4)	2	
K-25	11-125A-7507	C, D	Wiper Link "C"	와이퍼 링크 "C"	2	
K-26	11-026A-7507	C	Wiper Holder	와이퍼 잡이	2	
K-27	SC-0298-7500	C	Screw (M3×0.5)	육각구멍볼이 보울트 (M3×0.5)	2	
K-28	SC-0132-7500	C	Screw (M3)	육각구멍볼이 보울트 (M3)	2	
K-29	11-029A-7507	C, D	Wiper (Right)	와이퍼 "우" (조)	1	
K-30	11-029B-7507	C	Wiper (Left)	와이퍼 "좌" (조)	1	
K-31	11-026A-7507	D	Wiper Holder	와이퍼 잡이	1	
K-32	SC-0298-7500	D	Screw (M3×0.5)	육각구멍볼이 보울트 (M3×0.5)	1	
K-33	SC-0132-7500	D	Screw (M3)	육각구멍볼이 보울트 (M3)	1	
K-34	11-030A-7507	C, D	Wiper Link Body	와이퍼 링크부착 몸체	1	
K-35	06-024S-7400	C, D	Screw (3/16" n=32)	홈볼이 넵비 작은나사 (3/16" n=32)	4	
K-36	11-032P-7507	C, D	Stopper	스토퍼	1	
K-38	10-020W-2700	C, D	Washer For K-36	스토퍼 접 와셔	2	

NOTE:

- ① C=KM-867-7
- C-1=KM-867
- D=KM-857-7
- D-1=KM-857



Reverse Button Mechanism 역진 버튼 관계

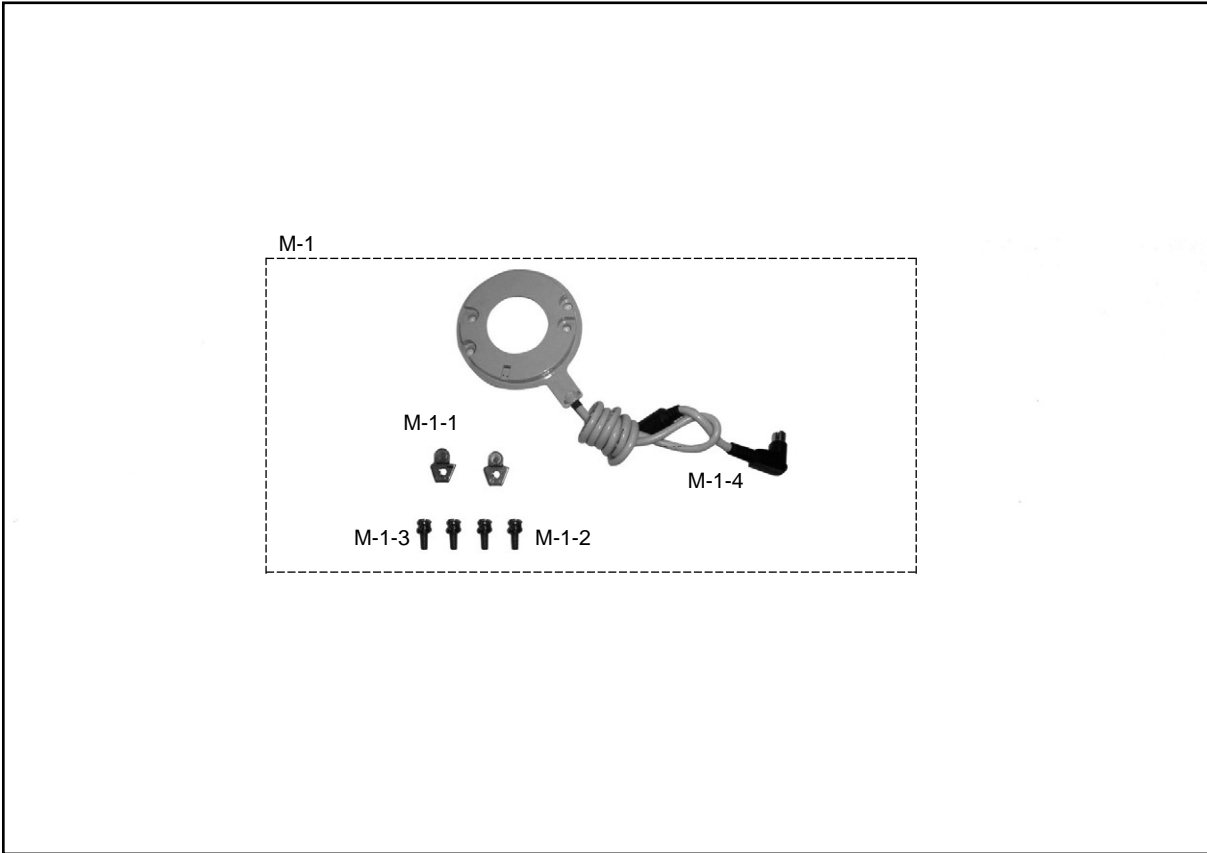


Ref. No.	Parts No.	Note	Name of Parts	품명	Q' ty	Applied Period
L-1	GP-022654-00	C,D	Reverse Button Case	역진 버튼 케이스	1	
L-2	12-002A-7507	C,D	Insulation Film	역진 버튼 스위치 절연필름	1	
L-3	12-013A-7507	C,D	Reverse Button Assembly	역진 버튼 (조)	1	
L-4	12-004A-7507	C,D	Spring For Reverse Button	역진 버튼 스프링	1	
L-5	06-033M-3800	C,D	E-Ring(Ø 3)	톱니 받침 블록측 E링 3	1	
L-6	12-006P-7507	C,D	Stopper For Reverse Button	역진 버튼 스토퍼	1	
L-7	SC-0531-2302	C,D	Screw (9/64" n=40)	홈볼이 동근납작 작은나사 (9/64" n=40)	1	
L-8	12-003A-8577	C,D	Reverse Button S/W Ass'y(4)	역진 버튼 스위치(조)	1	
L-9	SC-0126-3800	C,D	Screw (3/32" n=56)	홈볼이 냄비 작은나사(3/32" n=56)	2	
L-10	SC-0195-7507	C,D	Screw (M4×0.7)	홈볼이 납작 작은나사(M4×0.7)	1	
L-11	SC-0543-2302	C,D	Screw (11/64" n=40)	홈볼이 납작 작은나사 (11/64" n=40)	2	

NOTE:

- ① C=KM-867-7
- C-1=KM-867
- D=KM-857-7
- D-1=KM-857

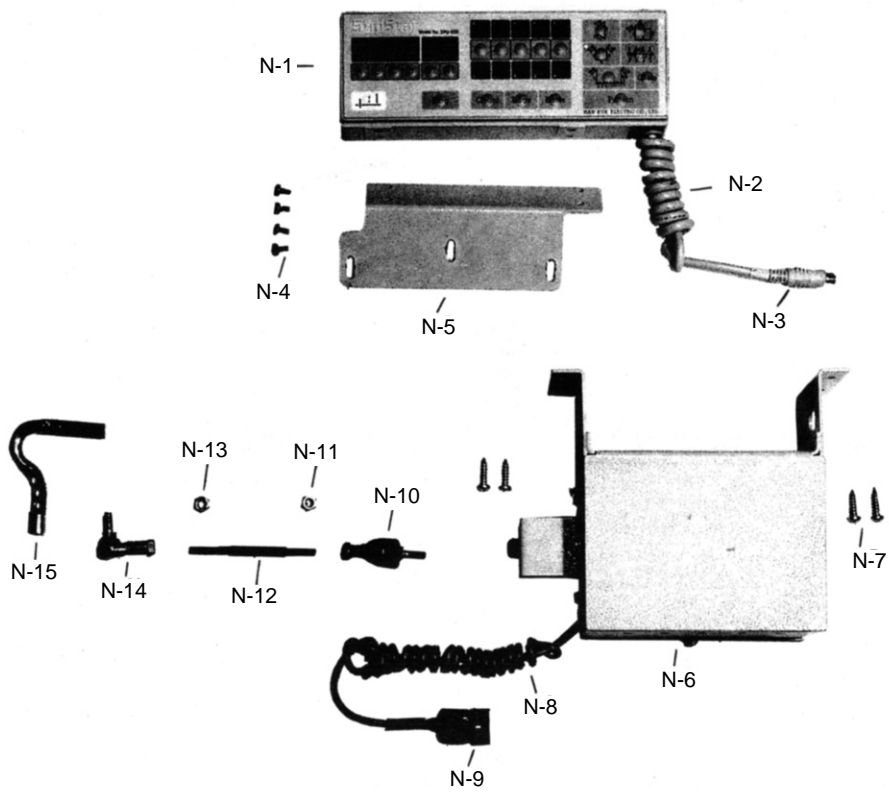
Synchronizer 싱크로나이저 관계



Ref. No.	Parts No.	Note	Name of Parts	품 명	Q' ty	Applied Period
M-1			Synchronizer Ass'y	싱크로나이저(조)		
M-1-1	11-020A-2500		Magnetic Holder	마그네틱 홀더	2	
M-1-2	11-022W-2500		Washer For M-1-1	마그네틱 홀더 와셔	4	
M-1-3	11-021S-2500		Screw For M-1-1	마그네틱 홀더 집나사	4	
M-1-4	12-1000-SE55		Synchronizer Ass'y (Servo)	싱크로나이저(조)Servo	1	

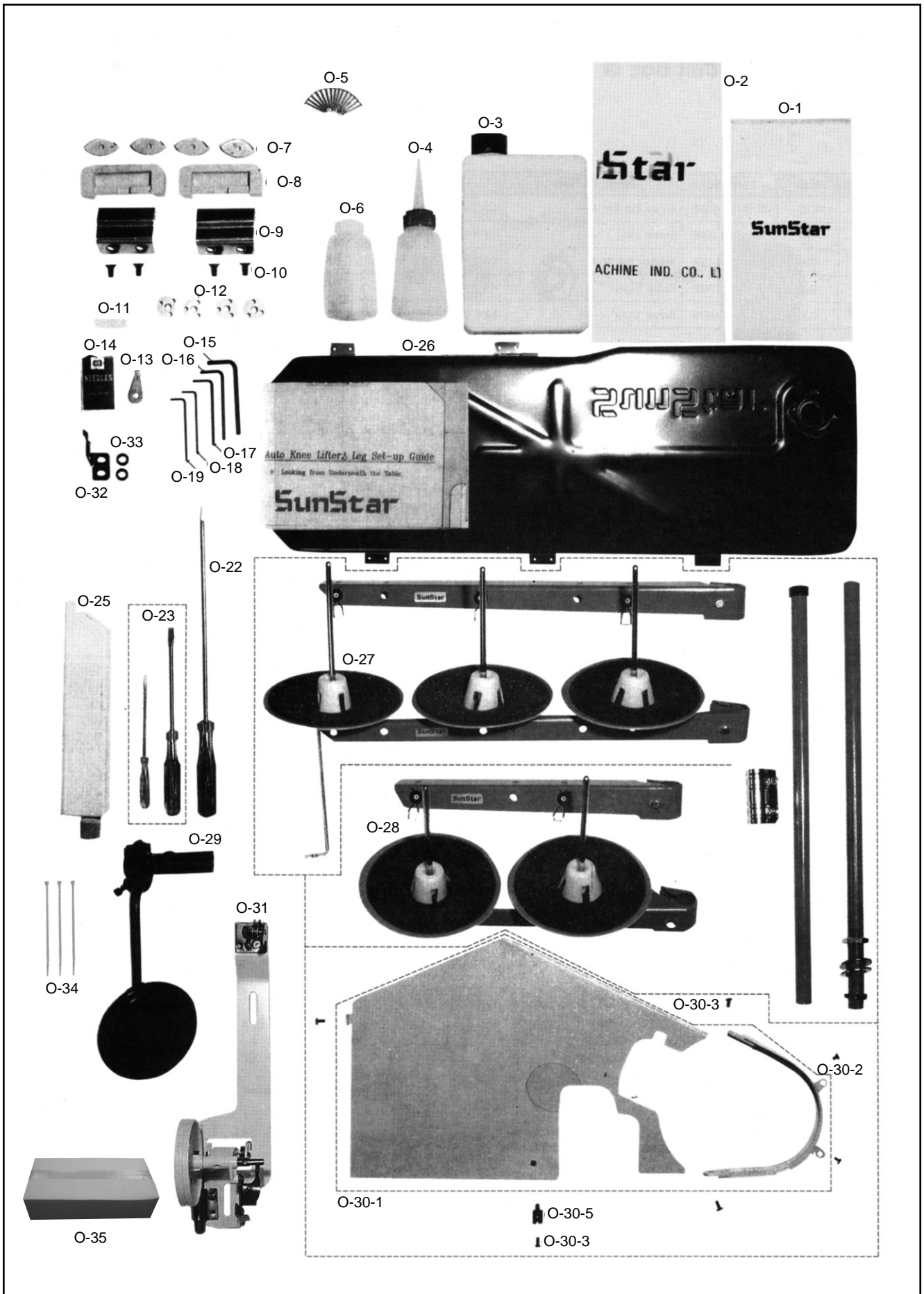
NOTE:
 ① C=KM-867-7
 C-1=KM-867
 D=KM-857-7
 D-1=KM-857

Program Unit Box & Presser Foot Lifting Solenoid Mechanism 프로그램 유니트 및 노루발 올림 장치 관계





Accessories 액세서리



Ref. No.	Parts No.	Note	Name of Parts	품 명	Q' ty	Applied Period
O-1	91-001C-1230		Accessory Bag	액세서리 봉투	1	
O-2	91-001C-8270		Head Cover	미싱카바(대)	1	
O-3	GP-022450-00		Oil	오일캔(특종)	1	
O-4	91-011C-1230		Oil Tank	오일주유통	1	
O-5			Nail	못	16	
O-6	91-002C-7400		Oiler	유차병	1	
O-7	91-103R-7400		Head Cushion	힌지 고무(소)	4	
O-8	91-106R-7400		Rubber Cushion	힌지 고무(대) (White)	2	
O-9	91-004C-7400		Head Hinge	힌지쇠	2	
O-10	SC-0118-7400		Screw (1/4" n=24)	홈볼이 접시 작은나사 (1/4" n=24)	4	
O-11	44-024M-7500		Felt	윗실 급유 felt	1	
O-12	07-060A-7500		Bobbin	실토리(보빈) 표준	4	
O-13	91-007C-7400		Needle Thread Inserting Guide	실끼기	1	
O-14			Needle	바늘(#DP5×18)	5	
O-15	91-002C-2700	C, D	L Wrench (5mm)	L렌치 (5mm)	1	
O-16	91-001C-3800	C, D	L Wrench (4mm)	L렌치 (4mm)	1	
O-17	91-003C-2700		L Wrench (3mm)	L렌치 (3mm)	1	
O-18	91-004C-2700	C, D	L Wrench (2.5mm)	L렌치 (2.5mm)	1	
O-19	91-001C-2700	C, D	L Wrench (2mm)	L렌치 (2mm)	1	
O-22	91-002C-1230		Driver (Large)	드라이버(大)	1	
O-23	91-003C-1230		Driver (Middle, Small)	드라이버(中, 小)	1	
O-25	90-003A-8670		Head Rest	두부 지지봉	1	
O-26	44-002A-8130		Oil Pan Assembly	오일 팬(조)	1	
O-27	91-008A-7400	C, C-1	Thread Stand Assembly	3분 사립봉	1	
O-28	91-007A-2302	D, D-1	Thread Stand Assembly	실패꽃이(조)	1	
O-29	43-100A-7500		Knee Lifting Pad Assembly	무릎올림(조)	1	
O-30-1	60-001A-8570		Belt Cover Assembly	벨트 커버(조)	1	O-30 Belt Cover Assembly
O-30-2	SC-0158-3710		Screw (9/64" n=40)	접시머리 보울트 (9/64" n=40)	2	
O-30-3	SC-0543-4525		Screw (11/64" n=40)	홈볼이 둥근납작 작은나사 (11/64" n=40)	4	
O-30-5	60-006P-8670		Pin For Belt Cover "B"	벨트 커버(B) 지지핀	1	
O-31	41-101A-1230		Bobbin Winder Assembly	실감기(조)	1	
O-32	GP-025627-00		Fixed Mes	고정메스(37728)	1	
O-33	10-003W-8677		Washer for Fixed Mes	고정메스 쥘나사 와셔	4	
O-34	02-003A-2700	C, D	Clip	나일론 클립	5	
O-35	99-011M-8570		Inner Box	인너 박스	1	

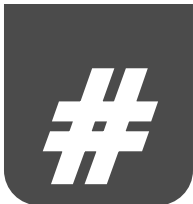
NOTE:

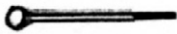
- ① C=KM-867-7
- C-1=KM-867
- D=KM-857-7
- D-1=KM-857

P

Gauge Parts 게이지 부분

Gauge Size	Ref. No.	D-7	D-8	H-6	H-68
	Model	Needle Clamp	Presser Foot	Feed Dog	Needle Plate
1/16(1.6mm)	C	02-221A-7400	05-210A-7400	06-113A-8270	09-081A-8670
	C-1				
3/32(2.4mm)	C	02-121A-7400	05-110A-7400	06-012A-8270	09-079A-8670
	C-1				
1/8(3.2mm)	C	02-521A-7400	05-510A-7400	06-114A-8270	09-080A-8670
	C-1				
3/16(4.8mm)	C	02-321A-7400	05-310A-7400	06-112A-8270	02-082A-8670
	C-1				
1/4(6.4mm)	C	02-021A-7400	05-010A-7400	06-115A-8270	09-084A-8670
	C-1				
1"(25.4mm)	C	02-921A-7400	05-910A-7400	06-116A-8270	09-085A-8670
	C-1				



 Moving Knife Shaft Connection Rod	Ref. No.	J-35	J-36	J-37
	Model	Gauge Size	1/16" ~ 7/16" (1.6mm ~ 11.1mm)	1/16" ~ 7/16" (1.6mm ~ 11.1mm)
	C	10-020A-8677	10-120A-8677	10-220A-8677

NOTE:

- ① C=KM-867-7
- C-1=KM-867
- D=KM-857-7
- D-1=KM-857

INDEX

Parts No.	Name of Parts	Page	Ref.No.
01-006A-7500	Face Plate	7	A-3
01-007R-8130	Oil Cap	7	A-10
01-007S-7500	Screw(Upper) For A-3	7	A-4
01-007W-7400	Washer(Upper) For A-3	7	A-5
01-009R-2350	Cable Holder	9	A-65
01-009R-2700	Cable Holder (6N)	7	A-27
01-009S-7500	Screw(Lower) For A-3	7	A-6
01-013S-7400	Screw (11/64" n = 40)	15	F-30
01-014C-8130	Nut For A-41	9	A-42
01-015A-7400	Thread Retainer	7	A-11
01-015A-7400	Thread Retainer	7	A-12
01-018A-7500	Arm Thread Guide Plate (U)	7	A-16
01-019C-7400	Stopper For Thread Take-Up Spring	9	A-50
01-020A-7500	Arm Thread Guide Plate (M)	7	A-17
01-020W-2350	Washer For Saddle	15	F-17
01-020W-2350	Washer For Post Support Guide	15	F-32
01-020W-2350	Washer For J-61	25	J-63
01-020W-2350	Washer For J-77	25	J-79
01-022A-7500	Arm Thread Guide Plate (L)	7	A-20
01-022C-7400	Arm Thread Guide Plate (M)	7	A-18
01-024A-7500	Felt For Upper Thread Supply	7	A-20-
01-030A-8677	Cable Cover	9	A-37
01-035P-1370	Machine Number Plate	9	A-39
01-035P-7400	Pin	9	A-40
01-038A-7500	Back Cover Plate	7	A-29
01-101C-7500	Safety Guide	11	C-32
02-001A-8270	Timing Belt	10	B-34
02-002A-8670	Timing Belt Pulley (Upper)	10	B-30
02-003A-2700	Band Clip	7	A-28
02-003A-2700	Clip	31	O-34
02-009M-7400	Felt (A) For B-18	10	B-19
02-009M-7400	Felt(A) For B-23	10	B-28
02-015C-7400	Side Ring	10	B-31
02-015C-7400	Safety Clutch Belt Pulley Ring	13	E-17-9
02-018G-7400	Stop Ring(C)	10	B-35
02-019A-7400	Bearing (6204 ZZ)	10	B-36
02-020A-8670	Pulley(N)	10	B-38
02-020A-8677	Pulley (T)	10	B-37
02-101A-7500	Upper Shaft(S)	10	B-9
02-101A-7507	Upper Shaft(T)	10	B-8
02-103A-740L	Thread Take-Up Lever Holder	10	B-6
02-105A-7400	Link Cam	10	B-10
02-121A-7400	Needle Clamp 3/32	12	D-7*
02-212A-7500	Upper Shaft Bushing (M)	10	B-23
04-009P-7400	Taper Pin	12	D-13-1
04-012C-7400	Needle Bar Wick Holder (Upper)	12	D-14
04-016S-7400	Stud Screw For D-24	12	D-28
04-021C-7400	Wick Supporter	12	D-26
04-101A-8170	Needle Bar	12	D-2
04-101A-8270	Needle Bar Rock Link	12	D-30
04-104R-1230	Rubber Cap (L) For Oil Supply Terminal	23	I-36
04-111A-7400	Needle Bar Rock Shaft Bushing (F)	12	D-22
04-114A-7400	Needle Bar Rock Shaft Bushing (R)	12	D-23
05-001A-8170	Presser Foot	11	C-9
05-004A-8570	Spring For C-2	11	C-3
05-101A-7500	Presser Bar Bushing(L)	11	C-5
05-110A-8670	Presser Foot	11	C-8*
06-001A-7500	Length Control Dial Plate	17	G-3
06-001C-7400	Oil Cap	7	A-32
06-003G-8677	Reverse Lever Return Spring	17	G-31
06-008S-8270	Stud Screw For Feed Bar	21	H-18

Parts No.	Name of Parts	Page	Ref.No.
06-010R-1230	O-Ring For G-1	17	G-2
06-011G-8270	Ratchet Button Spring	13	E-21
06-012A-8270	Feed Dog (3/32)	21	H-6 *
06-012P-7400	Pin For G-3	17	G-5
06-015A-7500	Stud Screw For G-47	19	G-48
06-018P-7400	Roller For Spring Hook	17	G-29-
06-019A-5607	Stud Screw For G-13	17	G-16
06-020C-7400	E-Ring (Ø 6)	19	G-70
06-022A-5607	Stud Screw For G-17	17	G-19
06-022C-7400	Reverse Lever Stopper (Lower)	17	G-45
06-024A-5607	Stud Screw For G-18	17	G-21
06-024A-7500	Bearing Cover For Feed Cam	19	G-59
06-024S-7400	Screw (3/16" n = 32)	17	G-10
06-024S-7400	Screw (3/16" n = 32)	17	G-28
06-024S-7400	Screw (3/16" n = 32)	23	I-4
06-024S-7400	Screw (3/16" n = 32)	26	K-35
06-026A-5607	Reverse Solenoid Assembly(4)	17	G-23
06-027G-7400	Spring For G-3	17	G-6
06-032A-8670	Link For Reverse Lever Spring	17	G-29
06-033M-3800	E-Ring(Ø 3)	13	E-23
06-033M-3800	E-Ring(Ø 3)	27	L-5
06-033M-7400	Wick For B-6	10	B-7
06-033M-7400	Felt For G-49	19	G-52
06-036A-7400	Needle Bearing For G-56	19	G-58
06-040S-1600	Adjusting Screw (A) For Return Spring	25	J-83
06-046W-7400	Washer For Feed Bar Shaft	19	G-81
06-051A-8670	Feed Regulator Connecting Rod	19	G-47
06-051W-7400	Washer For Feed Bar Fork	19	G-84
06-053M-7400	Felt For Feed Bar Fork	19	G-85
06-053W-1230	Washer For G-34	17	G-37
06-054A-5700	Vertical Feed Eccentric Cam	13	E-30
06-061A-7507	Reverse Feed Control Lever	17	G-33
06-062A-7500	Reverse Lever	17	G-34
06-066G-7507	Reverse Lever Spring(A)	17	G-38
06-071S-7507	Stud Screw For G-44	17	G-43
06-072R-7507	Upper Stopper Rubber For Reverse Lever	17	G-44
06-086A-8677	Reverse Link	17	G-17
06-106A-8270	Feed Bar	19	G-79
06-107A-8670	Feed Regulator	17	G-7
06-107A-8677	Reverse Feed Control Shaft	17	G-11
06-108A-7500	Reverse Feed Control Shaft	17	G-12
06-112A-7500	Feed Regulator Eccentric Wheel Shaft	17	G-9
06-113A-8677	Reverse Crank	17	G-13
06-116A-8670	Feed Regulator Shaft	19	G-49
06-118A-5607	Reverse Solenoid Crank	17	G-18
06-123A-8677	Reverse Solenoid Bracket	17	G-20
06-129A-7500	Slide Block Guide Plate	19	G-64
06-132P-7400	Slide Block Shaft	19	G-62
06-135A-7400	Feed Cam Connecting Rod	19	G-61
06-137A-7400	Level Feed Connecting Link	19	G-66
06-139A-7400	Feed Rock Shaft Bushing (R)	19	G-71
06-140P-7400	Pin For G-67	19	G-69
06-141A-7400	Level Feed Crank	19	G-67
06-142A-7400	Collar For G-77	19	G-73
06-143A-7400	Feed Rock Shaft Bushing (Front)	19	G-75
06-143W-5607	Washer For G-40	17	G-39
06-147A-7400	Feed Bar Shaft	19	G-80
06-152A-7400	Feed Bar Fork	19	G-82
06-179A-5607	Feed Rock Shaft	19	G-77
07-003M-7400	Oil Felt	23	I-18
07-004M-7400	Felt For E-2	13	E-3

Parts No.	Name of Parts	Page	Ref.No.
07-007A-5607	Bearing (6904NR)	13	E-8
07-009A-8670	Ratchet Button	13	E-22
07-011A-5607	Bearing (6004NR)	13	E-12
07-011W-1230	Washer For A-58	9	A-64
07-011W-1230	Washer For J-49	25	J-51
07-011W-1230	Washer For J-65	25	J-66
07-060A-7500	Bobbin	31	O-12
07-101A-8670	Lower Shaft	13	E-1
07-102A-7400	Lower Shaft Front Bushing	13	E-2
07-104A-7500	Lower Shaft Middle Bushing	13	E-5
07-106A-7500	Bearing Bushing	13	E-7
07-108A-5607	Bearing Bushing	13	E-11
07-112A-5607	Bearing Presser	13	E-15
07-142A-5607	Safety Clutch Driving Ball	13	E-17-2
07-145G-5607	Safety Clutch Spring	13	E-17-5
07-148C-5607	Nut For E-17-7	13	E-17-10
07-149C-5607	Safety Collar Washer	13	E-17-11
07-160A-7500	Bobbin	21	H-40
07-160A-7500	Bobbin	21	H-41
07-221A-8670	Safety Clutch Belt Pulley	13	E-17-1
07-243A-5607	Safety Clutch Collar	13	E-17-3
07-244C-5607	Safety Clutch Disc	13	E-17-4
07-251A-5607	Ratchet For Safety Clutch	13	E-18
07-252A-5607	Stopper Collar For G-49	19	G-50
08-010B-3701	Plug For A-58	9	A-62
08-101A-8130	Hinge Pin For B-1	10	B-3
08-103A-7500	Thread Take-Up Lever	10	B-1
09-001A-8570	Post	15	F-5
09-002A-7400	Hook Shaft Gear	21	H-64
09-002A-7400	Hook Shaft Gear	21	H-65
09-005C-8270	Feed Dog Lever Retainer Washer	21	H-11
09-006S-8270	Shaft Feed Dog Lever Slide Block	21	H-14
09-008S-8270	Screw For Feed Dog Lever Slide Block	21	H-13
09-009W-8270	Washer For H-15	21	H-16
09-023A-8577	Saddle	15	F-11
09-023A-8577	Saddle	15	F-12
09-023A-8670	Saddle	15	F-13
09-023A-8670	Saddle	15	F-14
09-025W-8270	Washer(B) For D-31	12	D-35
09-025W-8270	Washer For Post	15	F-4
09-031A-8577	Hook	21	H-34
09-031A-8577	Hook	21	H-35
09-036A-8570	Hook	21	H-42
09-036A-8570	Hook	21	H-43
09-039W-8677	Hook Washer	21	H-48
09-039W-8677	Hook Washer	21	H-49
09-042A-8670	Opener Holder	21	H-56
09-042A-8670	Opener Holder	21	H-57
09-042R-7400	Cap (S) For Oil Supply Terminal	23	I-37
09-049S-8670	Hook Cover Stopper	15	F-25
09-049S-8670	Hook Cover Stopper	15	F-26
09-051A-8570	Post Support	15	F-29
09-055A-8570	Post Cover	15	F-33
09-057A-8670	Post Cover "A"	15	F-35
09-060A-8670	Post Cover "B"	15	F-38
09-063A-8570	Post Cover "C"	15	F-41
09-066A-8570	Post Cover "D"	15	F-44
09-069A-8577	Post Cover "E"	15	F-47
09-071A-8670	Post Cover "F"	15	F-49
09-071A-8670	Post Cover "F"	15	F-51
09-079A-8570	Feed Dog	21	H-7

INDEX

Parts No.	Name of Parts	Page	Ref.No.
09-079A-8670	Needle Plate	21	H-68 *
09-080A-8570	Needle Plate	21	H-69
09-081S-8670	Screw For Needle Plate	21	H-70
09-107A-8270	Feed Dog Lever Slide Block	21	H-15
09-127A-8677	Bushing For Hook Shaft	21	H-20
09-127A-8677	Bushing For Hook Shaft	21	H-21
09-128A-8670	Bushing For Hook Shaft	21	H-22
09-128A-8670	Bushing For Hook Shaft	21	H-23
09-130A-8677	Hook Shaft	21	H-30
09-130A-8677	Hook Shaft	21	H-31
09-131A-8670	Hook Shaft	21	H-32
09-131A-8670	Hook Shaft	21	H-33
09-140A-8670	Opener	21	H-50
09-140A-8670	Opener	21	H-51
09-142A-8677	Opener Holder	21	H-54
09-142A-8677	Opener Holder	21	H-55
09-144A-8670	Opener Stopper	21	H-60
09-144A-8670	Opener Stopper	21	H-61
09-146C-8577	Cover For Saddle	15	F-53
09-146C-8577	Cover For Saddle	15	F-54
10-003W-8677	Washer For Fixed Mes	25	J-6
10-003W-8677	Washer For Fixed Mes	25	J-6
10-003W-8677	Washer for Fixed Mes	31	O-33
10-004A-8677	Holder For Fixed Mes	25	J-8
10-004A-8677	Holder For Fixed Mes	25	J-8
10-006A-8677	Thread Catcher	25	J-11
10-006A-8677	Thread Catcher	25	J-12
10-013A-7507	Thread Trimming Rocker Link Shaft	25	J-54
10-017S-8577	Screw For J-54	25	J-55
10-019S-7507	Adjusting Screw (B) For Return Spring	25	J-85
10-020W-2700	Washer For K-36	26	K-38
10-021G-7507	Thread Trimming Return Spring	25	J-82
10-021S-8677	Screw For Moving Knife Shaft Rod	25	J-38
10-024S-8677	Stud Screw For J-39	25	J-41
10-024S-8677	Stud Screw For J-44	25	J-45
10-033C-7507	Nut For Joint	25	J-40
10-033C-7507	Nut (R) For J-44	25	J-47
10-033C-7507	Nut (R) For J-49	25	J-52
10-033C-7507	Nut For Stopper Pin Screw	25	J-59
10-033C-7507	Nut For J-65	25	J-67
10-034A-7507	Length Adjusting Rod	25	J-48
10-034A-8677	Thread Trimming Rock Link	25	J-53
10-034S-7507	Stud Screw For J-49	25	J-50
10-036C-7507	Nut (L) For J-44	25	J-46
10-044R-5607	Cushion Rubber	25	J-56
10-050S-8577	Stopper Pin Screw	25	J-57
10-053S-7507	Stud Screw For Clutch Lever	25	J-69
10-056A-7507	Thread Trimming Solenoid Ass'y (4)	25	J-72
10-061S-9577	Screw (M3×0.5)	26	K-5
10-061S-9577	Washer For K-1	26	K-6
10-061S-9577	Spring Washer For K-1	26	K-7
10-067S-7507	Stud Screw For J-64	25	J-65
10-108A-8677	Fixed Mes Cover	25	J-15
10-109A-8577	Fixed Mes Cover	25	J-17
10-111A-8670	Moving Knife	25	J-19
10-111A-8670	Moving Knife	25	J-20
10-113A-8677	Moving Knife Shaft	25	J-23
10-113A-8677	Moving Knife Shaft	25	J-24
10-114A-8677	Collar For Moving Mes Shaft	25	J-25
10-114A-8677	Collar For Moving Mes Shaft	25	J-26
10-116A-8677	Bushing For Moving For Mes Shaft	25	J-29

Parts No.	Name of Parts	Page	Ref.No.
10-116A-8677	Bushing For Moving For Mes Shaft	25	J-30
10-118A-8677	Moving Knife Shaft Crank (L)	25	J-33
10-120A-8677	Moving Knife Shaft Connection Rod	25	J-35 #
10-126A-8677	Moving Knife Shaft Crank (R)	25	J-42
10-129A-7507	Holder For Stopper Pin	25	J-61
10-166A-7507	Roller For Thread Trimming Cam	25	J-64
10-220A-8577	Joint For Moving Knife Shaft Rod	25	J-39
10-220A-8577	Joint (R) For Thread Trimming Rock Link	25	J-49
10-221A-8577	Connection Joint (L) For J-42	25	J-44
10-551S-7507	Clutch Lever Pin Screw	25	J-70
10-554A-7507	Clutch Lever	25	J-68
11-001A-8677	Wiper Solenoid Ass'y (4)	26	K-1
11-003A-7507	Wiper Solenoid Cover	26	K-3
11-013G-7507	Return Spring For K-1	26	K-12
11-014A-7507	Link "A" Ass'y	26	K-13
11-015S-7507	Stud Screw For K-13-3	26	K-14
11-015S-7507	Stud Screw For K-21-1, K-22-1	26	K-17
11-017C-7507	Nut For K-13-3	26	K-16
11-017C-7507	Stud Nut For K-20-1, K-21-1	26	K-19
11-017S-7500	Nut For C-17	11	C-16
11-018M-2350	Plug For J-72	25	J-76
11-019M-2350	Tube For J-72	25	J-75
11-020A-2500	Magnetic Holder	28	M-1-1
11-021A-7507	Wiper Shaft Ass'y	26	K-20
11-021A-8577	Wiper Shaft Ass'y	26	K-21
11-021S-2500	Screw For M-1-1	28	M-1-3
11-022A-7507	Wiper Link Shaft	26	K-22
11-022W-2500	Washer For M-1-1	28	M-1-2
11-023A-7507	Collar For K-22	26	K-23
11-026A-7507	Wiper Holder	26	K-26
11-026A-7507	Wiper Holder	26	K-31
11-029A-7507	Wiper (Right)	26	K-29
11-029B-7507	Wiper (Left)	26	K-30
11-030A-7507	Wiper Link Body	26	K-34
11-032P-7507	Stopper	26	K-36
11-102A-7507	Wiper Solenoid Bracket	26	K-2
11-125A-7507	Wiper Link "C"	26	K-25
12-002A-7507	Insulation Film	27	L-2
12-003A-8577	Reverse Button S/W Ass'y(4)	27	L-8
12-004A-7507	Spring For Reverse Button	27	L-4
12-006P-7507	Stopper For Reverse Button	27	L-6
12-013A-7507	Reverse Button Assembly	27	L-3
12-1000-SE55	Synchronizer Ass'y (Servo)	28	M-1-4
15-014A-8670	Needle Bar Rock Crank	12	D-31
15-031A-5607	Stud Screw For D-31	12	D-33
15-033A-5607	Needle Bar Rock Crank Collar	12	D-34
15-035W-5607	Spring Washer For D-31	12	D-36
15-220A-7900	Slide Block	19	G-63
17-437C-7907	Tube For A-58	9	A-61
26-029A-5607	Reverse Solenoid Cover	17	G-26
40-002A-7500	Thread Tension Control Ass'y	9	A-47
40-002A-7507	Thread Tension Control Ass'y	9	A-46
40-002A-8570	Thread Tension Control Ass'y	9	A-49
40-002A-8577	Thread Tension Control Ass'y	9	A-48
40-006A-7507	Tension Release Solenoid Ass'y(4)	9	A-58
40-010A-5607	Tension Release Bar	9	A-43
41-101A-1230	Bobbin Winder Assembly	31	O-31
41-288G-7500	Stopper Pin Return Spring	25	J-60
43-001A-640L	Presser Bar Lifter	11	C-12
43-005C-7500	Nut For C-18	11	C-22
43-007A-7500	Presser Bar Lifter Lever Stud	11	C-21

Parts No.	Name of Parts	Page	Ref.No.
43-008A-7500	Collar For C-21	11	C-20
43-013A-7500	Spring For Presser Bar Lifter Lever	11	C-17
43-013A-7500	Knee Lifter Lever	11	C-27
43-014S-7500	Stud Screw For C-27	11	C-26
43-015A-5607	Knee Lifting Roller Bracket Assembly	11	C-30
43-015A-7500	Knee Lifter Connecting Rod	11	C-24
43-016A-8670	Knee Lifter Bar	11	C-28
43-017S-7500	Stud Screw For C-24	11	C-25
43-018A-7500	Knee Lifter Assembly	11	C-31
43-026S-8130	Screw (A) For C-31-2	11	C-31-3
43-027A-8130	Lever Shaft Stopper Collar	11	C-31-7
43-027G-8130	Return Spring For C-31-5	11	C-31-6
43-027S-8130	Screw (B) For C-31-2	11	C-31-4
43-027S-8130	Screw (B) For C-31-7	11	C-31-9
43-028A-8130	Lever Shaft Bracket	11	C-31-1
43-029A-7500	Knee Lifter Rock Bar Lever Shaft	11	C-31-5
43-030P-8130	Lever Shaft Guide Pin	11	C-31-10
43-100A-7500	Knee Lifting Pad Assembly	31	O-29
44-0000-1230	Oil Wick	10	B-4
44-0000-1230	Oil Wick	10	B-14
44-0000-1230	Oil Wick	12	D-15
44-0000-1230	Oil Wick	19	G-53
44-0000-1230	Oil wick	23	I-25
44-0000-1230	Oil wick	23	I-26
44-0000-1230	Oil wick	23	I-27
44-0000-1230	Oil wick	23	I-41
44-0000-1230	Oil wick	23	I-45
44-0000-1230	Oil wick	23	I-49
44-0000-1234	Oil Wick	10	B-2
44-001C-1230	Tube Holder Spring	23	I-28
44-002A-8130	Oil Pan Assembly	31	O-26
44-004A-7500	Dust Protector	23	I-5
44-008M-7500	Oil Seat	7	A-24
44-009M-7500	Oil Filter	23	I-9
44-010C-1600	Oil Tube Pin	23	I-30
44-010M-7500	Oil Seal(L) For B-23	10	B-26
44-011M-7500	Oil Seal(R) For B-23	10	B-27
44-012P-7500	Oil Tube Pin(A) For B-23	10	B-24
44-013P-7500	Oil Tube Pin(B) For B-23	10	B-25
44-014A-7500	Oil Tank Assembly	23	I-10
44-016M-7400	Oil Felt For Thread Take-Up	23	I-2
44-019M-7400	Felt (B)	23	I-16
44-019M-7400	Oil Felt	23	I-17
44-021R-7400	Rubber Cap	7	A-9
44-021R-7400	Rubber Cap	23	I-13
44-024M-7500	Felt For Upper Thread Supply	7	A-21
44-024M-7500	Felt	31	O-11
44-026G-7400	Tube Holder	23	I-43
44-026G-7400	Tube Holder	23	I-47
44-026M-8670	Post Felt	15	F-2
44-029M-8670	Hook Shaft Felt	21	H-29
44-030M-8670	Opener Holder Felt	21	H-58
44-030M-8670	Opener Holder Felt	21	H-59
44-058C-5607	Wick Holder For G-49	19	G-54
44-070A-7500	Needle Bar Wick Holder (Lower)	12	D-16
44-072A-8670	Oil Supply Terminal Case	23	I-29
44-076G-8670	Spring For Oil Supply Adjusting Screw	23	I-33
44-078A-8670	Gasket For Oil Supply Terminal	23	I-35
44-081M-8670	Felt (A) For Oil Supply Terminal	23	I-38
44-082M-8670	Felt (B) For Oil Supply Terminal	23	I-39
44-084M-7500	Supporter For Oil Terminal Tube	23	I-53

