

# PARTS BOOK

## KM-235A/B

고속 1본침 본봉 자동사절 재봉기

High Speed, 1-Needle, Lock Stitch Machine  
with Automatic Thread Trimmer



PME-090929

SunStar CO., LTD.



# INFORMATION

## A. Parts Book 구성 Structure of Part Book

① **A** Machine Body Mechanism  
두부 및 외장 관계

④ ⑤ ⑥ ⑦ ⑧ ⑨

No.	Parts No.	Note.	Name of Parts	품 명	Q'ty		Assembly No.
					BS	BP	
A-52	418055-300H		Bobbin Winder Lever	실감기 레버	1	1	
A-53	418018-300H		Bobbin Winder Adjusting Plate	실감기 조절판	1	1	
A-54	SC-030-1230		Screw(LX <sup>®</sup> n=40)	볼트 (플라스틱)	1	1	
A-55	02-01W-2302		Washer	와셔	1	1	
A-56	418018-300H		Bobbin Winder Lever Shaft	실감기 레버 축	1	1	
A-57	418018-300H		Bobbin Winder Adjusting Cam	실감기 조절 캠	1	1	
A-58	0301205-013		Screw(M4 n=10)	볼트	1	1	
A-59	94-00C-2710		E-Ring(#2)	토링(호칭명 5)	2	2	
A-60	418078-300H		Bobbin Winder Action Plate	실감기 작동판	1	1	
A-61	41-088A-120H		Bobbin Winder Action Body	실감기 작동체	1	1	
A-62	40-00W-1000		Washer	와셔	2	2	
A-63	418018-300H		Bobbin Winder Spring	실감기 인장 스프링	1	1	
A-64	418028-300H		Bobbin Stopper	보빈 스톱퍼	1	1	
A-65	418028-300H		Screw	볼트	5	5	
A-66	418048-300H		Bobbin Stand	보빈 스탠드	1	1	
A-67	418058-300H		Bobbin Winder Mes	실감기 메스	1	1	
A-68	SC-610-2302		Screw(LX <sup>®</sup> n=40)	고양베스 평리 코발팅 나사	2	2	
A-69	418078-300H		Thread Tension Adjusting Ax' y	실감기 실감력 조절장치(조)	1Set	1Set	
A-70	418028-300H		Thread Tension Adjusting Shaft	실감기 실감력 조절 축	1	1	
A-71	418028-300H		Thread Guide Plate	실감판 판	1	1	
A-72	40-20A-1230		Thread Tension Disk	실감판 원시	2	2	
A-73	40-33G-123A		Thread Tension Spring	실감력 조절 스프링	1	1	
A-74	40-80W-1230		Thread Tension Spring Stopper	실감력 조절 스프링 스톱퍼	1	1	
A-75	40-05A-1230		Spring Cover	스프링 커버	1	1	
A-76	40-20A-2250		Thread Tension Nut	실감력 조절 캠 너트	1	1	
A-77	SN-0121-7400		Nut(1.5/16" n=20)	실감력 조절 축 너트	1	1	
A-78	018048-300H		Safety Plate Ax' y	안전판(조)	1Set	1Set	
A-79	018048-300H		Safety Plate	안전판	1	1	
A-80	018048-300H		Safety Plate Bracket	안전판 브라켓	1	1	
A-81	018048-300H		Safety Plate Holder	안전판 홀더	1	1	
A-82	018028-300H		Safety Plate Hinge Screw	안전판 힌지 나사	1	1	
A-83	SN-0101-7400		Nut(1/16" n=20)	너트	3	3	
A-84	40-00W-1000		Washer	와셔	1	1	
A-85	018058-300H		Safety Plate Spring	안전판 스프링	1	1	
A-86	018018-300H		Safety Plate Spring Hook	안전판 스프링 걸이	1	1	
A-87	SN-0111-0000		Nut(1/16" n=20)	너트	1	1	
A-88	GP-01206-02		Ball Cover	보타커버	1	1	
A-89	SC-0407-1230		Screw(L1.5/16" n=40)	플라스틱 나사	7	7	
A-90	GP-01223-00		X-Driving Motor Cover	X 구동 모터 커버	1	1	
A-91	GP-01221-00		Side Cover	옆뚜껑	1	1	
A-92	GP-012215-00		Side Cover Gasket	옆뚜껑 가스켓	1	1	

- ① 관계 별 고유 코드  
Unique code by mechanism
- ② 관계 별 고유 명칭  
Unique name by mechanism
- ③ 관계도  
Explode view
- ④ Ref. No. : 파트별 고유 식별 번호  
Unique identification number by part
- ⑤ Parts No. : 고유 제품 코드  
Unique Product code

- ⑥ Note. : 공지사항 표기 및 메모  
Refers to notice and memo
- ⑦ 품명 : 파트의 고유 품명  
Name of Part : Unique name of parts
- ⑧ Q'ty : 파트의 수량  
The numer of parts
- ⑨ Assembly no. : 조(組) 파트의 식별 번호  
Unique identification number by set part

Ex)

구분 Category	Code	비고 Category
구 부품 Old part	01-030C-1230	
신 부품 New part	AS-000000-00	조(組)파트 Set parts
	GP-000000-00	기구적 파트 Instrumental parts
	EP-000000-00	전기적 파트 Electrical parts

# WARNING

1. 조에 속한 파트는 개별 조립 시 제품의 파손 또는 재봉 불량 발생될 수 있어 해당 파트에 대한 주문 시에는 조 품목으로만 구입이 가능합니다.
2. 본 책자는 Part Book으로 제작되었으므로 매뉴얼로 사용 불가합니다.
3. 사전 예고 없이 사양이 변경 될 수도 있습니다.

1. The parts classified as ass'y items may cause damage to the machine or bad sewing when they are separately assembled. Hence, when they are ordered, they can be purchased as ass'y items only.
2. This is a parts book. It cannot be used as a manual.
3. Parts are Subject to change in Design Without Prior Notice.

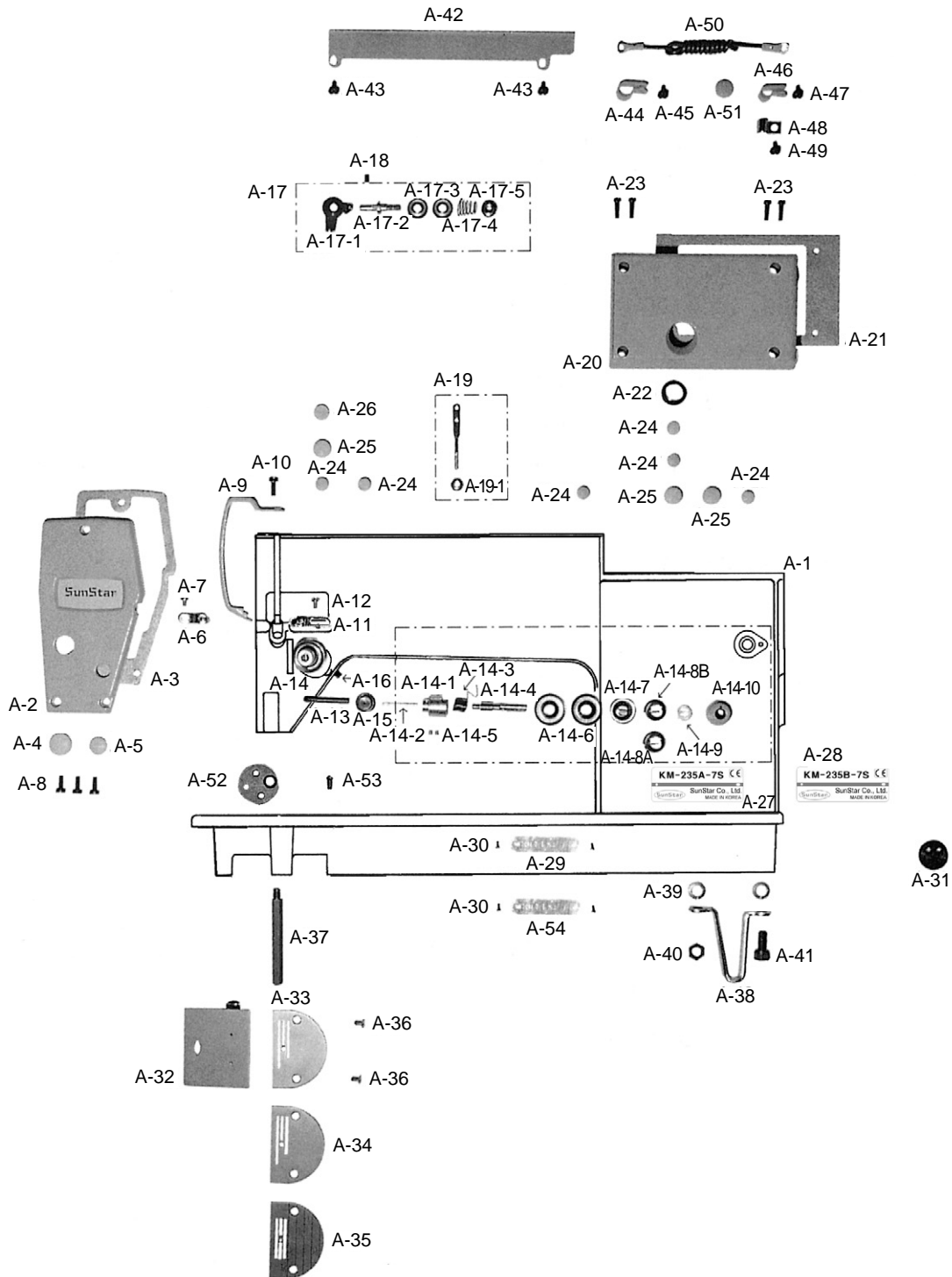
# CONTENTS

## 목 차

<b>A</b>	<i>Machine Body &amp; Thread Tension Adjusting Mechanism</i> 외장 및 실장력 조절 관계.....	4
<b>B</b>	<i>Upper Shaft, Needle Bar, Thread Take-Up, Synchronizer Mechanism</i> 상축/바늘대/실채기/싱크로 나이저 관계.....	8
<b>C</b>	<i>Upright Shaft &amp; Lower Shaft Mechanism</i> 세운축 및 하축 관계.....	12
<b>D</b>	<i>Feed Mechanism</i> 피이드 관계.....	14
<b>E</b>	<i>Press Bar &amp; Tension Release Mechanism</i> 누름대 및 실늦추기 관계.....	20
<b>F</b>	<i>Thread Trimmer Mechanism</i> 사절 관계.....	22
<b>G</b>	<i>Reverse Button Mechanism</i> 역진 버튼 관계.....	24
<b>H</b>	<i>Thread Wiper Mechanism</i> 와이퍼 관계.....	25
<b>I</b>	<i>Lubrication</i> 급유 관계.....	26
<b>J</b>	<i>Accessories</i> 액세서리 관계.....	28
<b>K</b>	<i>Program Unit Box &amp; Automatic Presser Foot Lifter</i> 프로그램 유닛 박스 및 자동 무릎올림 관계.....	32
	* INDEX.....	38

# A

## Machine Body & Thread Tension Adjusting Mechanism 외장 및 실장력 조절 관계



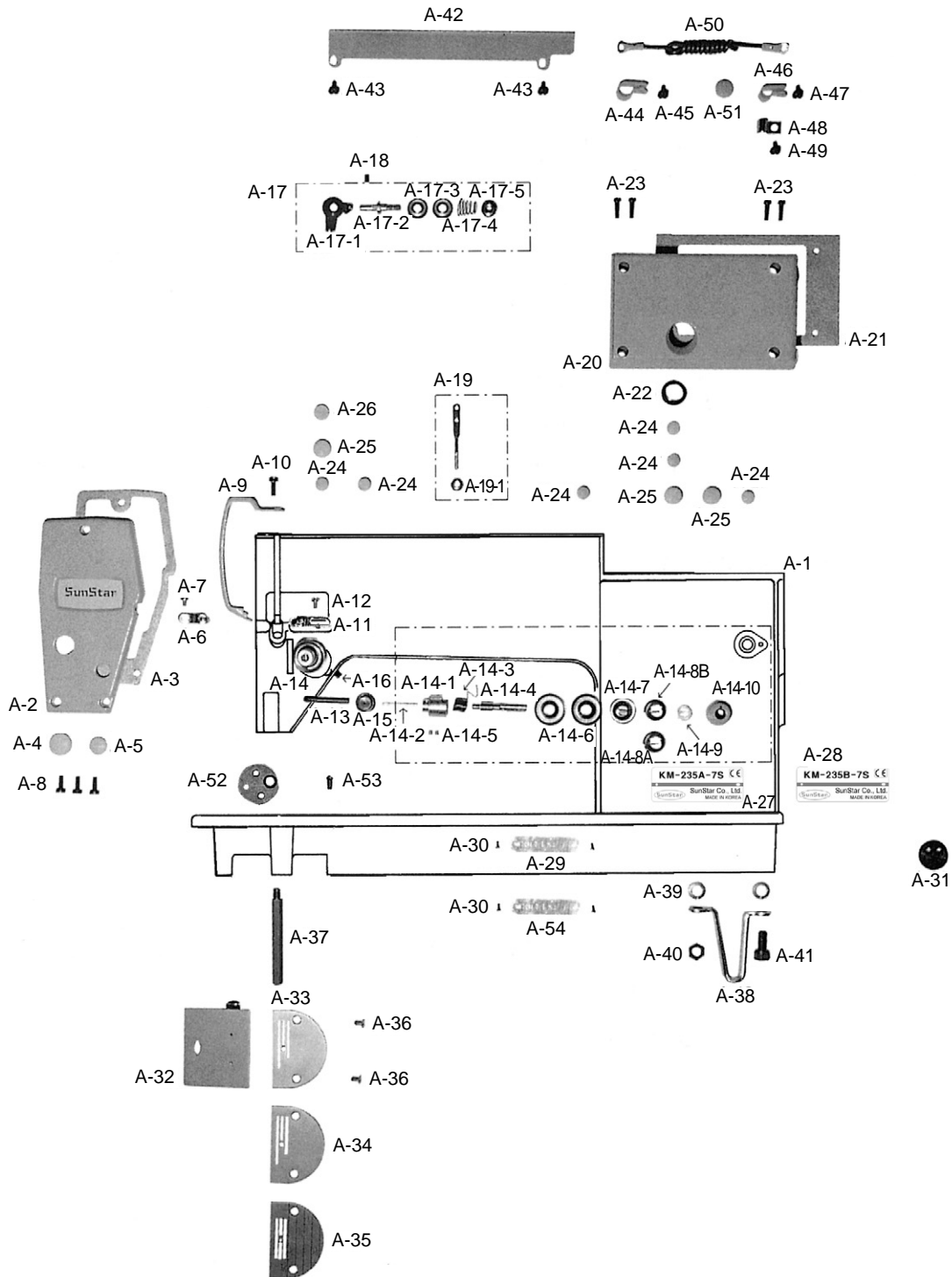
Ref. No.	Parts No.	Note	Name of Parts	품 명	Q' ty	Applied Period
A-1	AS-015890-05		Arm, Bed Assembly	암.베드(조)	1Set	Nov. 30. 09
	AS-015890-03		Arm, Bed Assembly	암.베드(조)	1	Nov. 17. 09
A-1-1	GP-046682-05		Arm	암	1	Nov. 30. 09
	GP-046682-02		Arm	암	1	
A-1-2	GP-046683-02		Bed	베드	2	
A-1-3	SC-0222-1230		Screw	결합볼트(대)	1	
A-1-4	SC-0225-2350		Screw	암베드결합볼트B	1	
A-1-5	SC-0226-1230		Screw	결합볼트	1	
A-2	GP-046686-00		Face Plate	면판	1	
A-3	01-107C-2350		Gasket	면판 패킹	1	
A-4	01-144R-1230		Face Plate Rubber Cap(L)	면판 고무마개(대) 흰색(3-1)	1	
A-5	DPK-CB000200		Rubber Plug	면판 고무마개(중) 흰색(3)	1	
A-6	01-031C-1230		Thread Guide Left	면판 실결이	1	
A-7	DSC-BA000100		Screw(9/64" n = 40)	오일펌프 커버 나사(9/64" n = 40)	3	
A-8	DSC-BJ000400		Screw(11/64" n = 40)	윗뚜껑 줍나사(11/64" n = 40)	1	
A-9	GP-018342-00		Cover For Take Up Lever	실채기 커버	1	
A-10	SC-0174-1230		Screw(11/64" n = 40)	가마잡이 나사(11/64" n = 40)	1	
A-11	01-030C-1230		Thread Guide For Arm	암 실결이	1	
A-12	DSC-BA000100		Screw(9/64" n = 40)	오일펌프 커버 나사(9/64" n = 40)	1	
A-13	PN-000789-01		Tension Release Pin	실 늦추기 핀	1	Nov. 26. 09
A-14	ATA-PS001303		Tension Adjusting Apparatus Ass'y	실 조절장치(사절용)	1Set	Nov. 17. 09
	AS-005778-00		Tension Adjusting Apparatus Ass'y	실 조절장치(사절용)	1	
A-14-1	40-104A-1230		Tension Barrel	실 조절장치 붓싱	1	
A-14-2	AS-005778-00		Tension Release Pin	사조자 핀	1	
A-14-3	40-111G-1230		Check Spring	뽕뽕 스프링	1	
A-14-4	AS-005778-00		Tension Stud	실 조절장치 축	2	
A-14-5	AS-005778-00		Set Screw	실 조절장치 축 고정나사	2	
A-14-6	AS-005778-00		Tension Disk	실 안내 접시	1	
A-14-7	AS-005778-00		Tension Release Washer	실 조절 스프링 받침	1	
A-14-8A	AS-005778-00	A	Tension Spring	소라 스프링	1	
A-14-8B	40-333G-123B	B	Tension Spring	소라 스프링	1	
A-14-9	AS-005778-00		Ratchet	실 조절장치 조절와셔	1	
A-14-10	AS-005778-00		Cap	윗실 장력 조절 캡	1	
A-15	40-008R-1230		Packing	누유 방지용 캡	1	
A-16	SC-001231-00		Screw(15/64" n = 28)	피드캠 고정나사(15/64" n = 28)	1Set	
A-17	40-201A-2700		Supplementary Tension Ass'y	보조 실 조절장치(조)	1	
A-17-1	40-105A-2700		Guide Plate	윗실 안내판	1	
A-17-2	40-101A-2700		Shaft	보조 실 조절장치 축	2	
A-17-3	40-102A-2700		Tension Disk	보조 실 조절 접시	1	
A-17-4	40-103A-2700		Spring	보조 소라 스프링	1	

**NOTE:**

A=KM-235A  
B=KM-235B

# A

## Machine Body & Thread Tension Adjusting Mechanism 외장 및 실장력 조절 관계





Ref. No.	Parts No.	Note	Name of Parts	품 명	Q' ty	Applied Period
A-17-5	40-104A-2700		Nut	보조 실 조절장치 조절 너트	1	
A-18	DSC-CB000300		Screw(11/64" n = 40)	하측 베어링 B/S 고정나사(11/64" n=40)	1	
A-19	01-016A-2350		Guide Bar For Thread	실 안내봉	1	
A-19-1	DSN-AA000100		Nut	세구멍 실걸이 너트	1	
A-20	01-011A-2350		Top Cover	윗 뚜껑	1	
A-21	01-112C-2350		Gasket	윗 뚜껑 패킹	1	
A-22	01-019C-1230		Oil Gauge Window	유창	4	
A-23	01-023S-1230		Screw For Top Cover	톱커버 나사(신)	6	
A-24	01-112R-1230		Robber Plug(Small)	고무마개(소) 회색(5)	3	
A-25	DPK-CB000200		Robber Plug(Large)	면판 고무마개(중) 회색(3)	1	
A-26	01-006R-2350		Robber Plug	실 늦추기 힌지핀 고무마개	1	
A-27	GP-046684-02	A	Model Mark	모델마크	1	
A-28	GP-046685-02	B	Model Mark	모델마크	1	
A-29	01-035P-1230		Machine Number Plate	번호판	4	
A-30	01-035P-7400		Setting Pin	번호판 핀	1	
A-31	01-007R-2350		Rubber Plug For Cable	슬레노이드 케이블 안내 고무	1Set	
A-32	01-434A-1230		Slide Plate Ass'y	미끄럼판(조)	1	
A-33	01-135A-123A	A	Needle Plate	침판	1	
A-34	01-135A-123B	B	Needle Plate	침판	1	
A-35	01-135A-235A		Needle Plate (AL-Type)	침판(박물용)	2	
A-36	DSC-BC000100		Screw(11/64" n = 40)	홈볼이 접시 작은나사(11/64" n=40)	1	
A-37	01-016C-1230		Bed Leg Front	베드 받침(전)	1	
A-38	01-115C-1230		Bed Leg Right	베드 받침	2	
A-39	PWS-CA000400		Spring Washer	베드 받침 스프링 와셔	1	
A-40	PSN-AA000500		Nut(M8×1.25)	베드 받침 너트(M8×1.25)	1	
A-41	SC-0346-2350		Screw(M8×1.25)	베드 받침 후 결합 볼트(M8×1.25)	1	
A-42	01-015A-2350		Cable Cover	케이블 커버	2	
A-43	SC-0199-2700		Screw(11/64" n = 40)	슬레노이드 부착 고정나사(11/64" n=40)	1	
A-44	01-011C-2350		Cable Holder(5N)	케이블 잡이C(5N)	1	
A-45	SC-0365-3710		Screw(9/64" n = 40)	면판 측면 커버 나사 (하) (9/64" n=40)	1	
A-46	01-009R-2700		Cable Holder(6N)	케이블 잡이(6N)	1	
A-47	SC-0365-3710		Screw(9/64" n = 40)	면판 측면 커버 나사 (하)	1	
A-48	01-009R-2350		Cable Holder	케이블 잡이	1	
A-49	SC-0365-3710		Screw(9/64" n = 40)	면판 측면 커버 나사 (하) (9/64" n=40)	1	
A-50	12-016M-2350		Earth Line	어스선(조)	1	
A-51	DPK-CB000200		Rubber Plug	면판 고무마개(중) 흰색(3)	1	
A-52	01-144A-257A		Gauge Plate	게이지 부착판	1	
A-53	DSC-BC000100		Screw for Needle Plate	침나사	1	
A-54			Mark	원산지 마크	1	

**NOTE:**

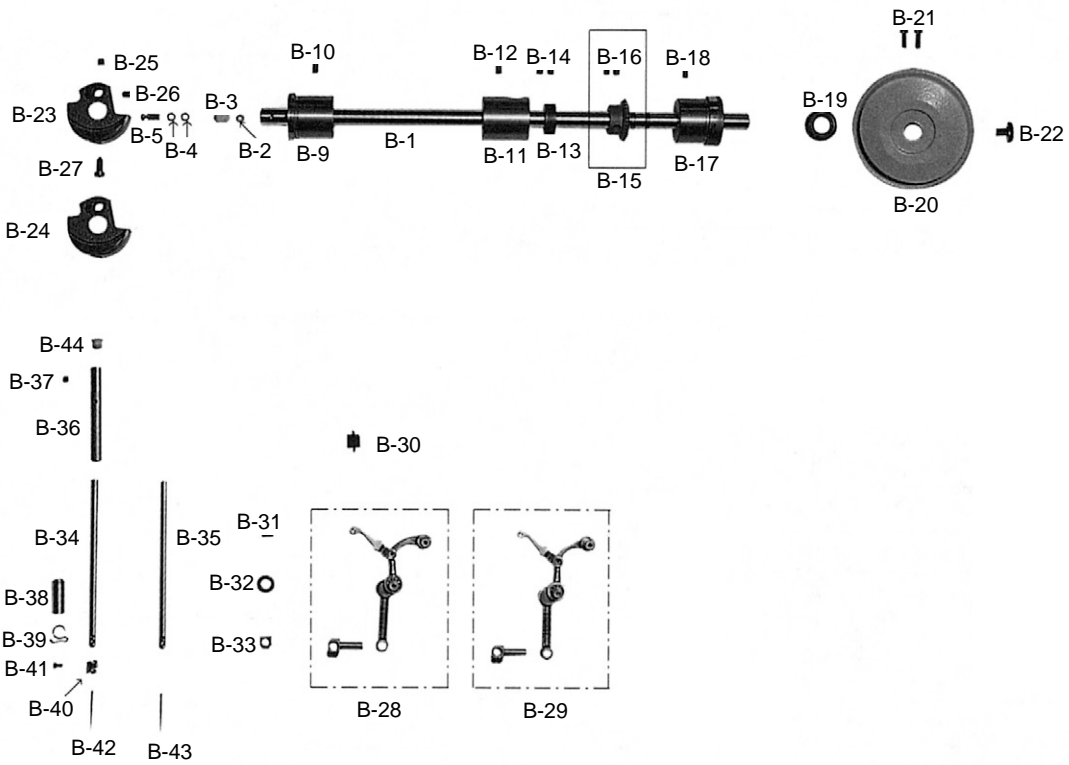
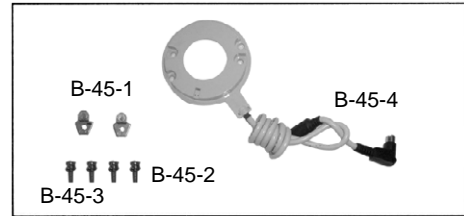
A=KM-235A  
B=KM-235B

# B

## Upper Shaft, Needle Bar, Thread Take-Up, Synchronizer Mechanism

상축/바늘대/실채기/싱크로나이저 관계

B-45



Ref. No.	Parts No.	Note	Name of Parts	품 명	Q' ty	Applied Period
B-1	ST-000164-01		Main Shaft	상축	1	
B-2	02-018W-1230		Rubber	상축 유량 조절 고무	1	
B-3	02-020M-1230		Felt	상축 felt	1	
B-4	02-016R-1230		O-Ring	상축 유량 조절핀 오링	2	
B-5	GP-031537-01		Adjusting Valve For Lubrication	상축 유량 조절핀	1	
B-9	02-125A-1230		Main Shaft Front Bushing	상축 앞 붓싱	1	
B-10	SC-0507-1230		Screw(15/64" n=28)	상축 B/S 고정나사(15/64" n=28)	1	
B-11	02-126A-1230		Main Shaft Center Bushing	상축 중 붓싱	1	
B-12	SC-0507-1230		Screw(15/64" n=28)	상축 B/S 고정나사(15/64" n=28)	1	
B-13	DCL-AA000100		Main Shaft Collar	상축 카라	1	
B-14	SC-A129-4515		Screw(1/4" n=40)	홈볼이 멈춤나사(1/4" n=40)	2	
B-15	02-106A-1230		Main Shaft Gear	상축 기어(국산)	1	
B-16	SC-A129-4515		Screw(1/4" n=40)	홈볼이 멈춤나사(1/4" n=40)	2	
B-17	GP-011579-00		Main Shaft Rear Bushing	상축 뒷 붓싱	1	
B-18	SC-001231-00		Screw(15/64" n=28)	피드캠 고정나사(15/64" n=28)	1	
B-19	02-028C-1230		Oil Seal	상축 오일 씬	1	
B-20	PL-000031-00		Pulley	폴리	1	Dec. 15. 09
	02-207A-257A		Pulley	폴리	1	
B-21	DSC-BF000800		Screw(15/64" n=40)	폴리 고정나사(15/64" n=40)	2	
B-22	SC-0188-1230		Screw(5/16" n=28)	폴리 고정나사(5/16" n=28)	1	
B-23	GP-047348-02	A	Counterweight	링크캠 (235A)	1	Oct. 01. 09
B-24	GP-047347-02	B	Counterweight	링크캠 (235B)	1	Oct. 01. 09
B-25	SC-A129-4515		Screw(1/4" n=40)	홈볼이 멈춤나사(1/4" n=40)	1	
B-26	SC-0504-1230		Screw(1/4" n=40)	실채기 핀 고정나사(1/4" n=40)	1	
B-27	SC-0123-1230		Screw(9/32" n=28)	링크캠 위치 고정나사(9/32" n=28)	1	
B-28	AS-016316-01	A	Take-Up Lever Complete	실채기 (235A)	1	
B-29	AS-016315-01	B	Take-Up Lever Complete	실채기 (235B)	1	
B-30	08-010R-2350		Oil Protection Rubber	실채기 기름막이 고무	1	
B-31	SC-0507-1230		Screw(15/64" n=28)	상축 B/S 고정나사(15/64" n=28)	1	
B-32	02-105W-1230		Thrust Washer	링크캠 와셔	1	
B-33	GP-031797-00		Sliding Block	바늘대 안내 블럭 (235A)	1	
B-34	NB-000008-00	A	Needle Bar	바늘대	1	
B-35	NB-000009-00	B	Needle Bar	바늘대	1	
B-36	04-108A-2350		Needle Bar Upper Bushing	바늘대 상 붓싱	1	
B-37	SC-0110-1230		Screw(15/64" n=28)	바늘대 B/S 나사	1	
B-38	04-109A-235A		Needle Bar Lower Bushing	바늘대 하 붓싱	1	
B-39	04-005C-1230		Thread Guide "A"	바늘대 붓싱 실결이	1	
B-40	04-001A-2700		Thread Guide	바늘대 실결이 (235A, B)	1	
B-41	DSC-BF000100		Screw(1/8" n=44)	홈볼이 납작 작은나사(1/8" n=44)	1	
B-42		A	Needle	바늘	1	
B-43		B	Needle	바늘	1	
B-44	04-003R-1600		Rubber Cap	바늘대 상 붓싱 마개	1	
B-45	13-2000-SE55		Synchronizer Ass'y	싱크로나이저	1Set	
B-45-1	11-020A-2500		Magnetic Holder	마그네트 홀더	2	
B-45-2	11-022W-2500		Washer For Magnetic Holder	마그네트 홀더 와셔	4	
B-45-3	11-021S-2500		Screw For Magnetic Holder	마그네트 홀더 쥘나사	4	
B-45-4	13-0000-SE55		Synchronizer Ass'y (Servo)	싱크로나이저(조) Servo	1	

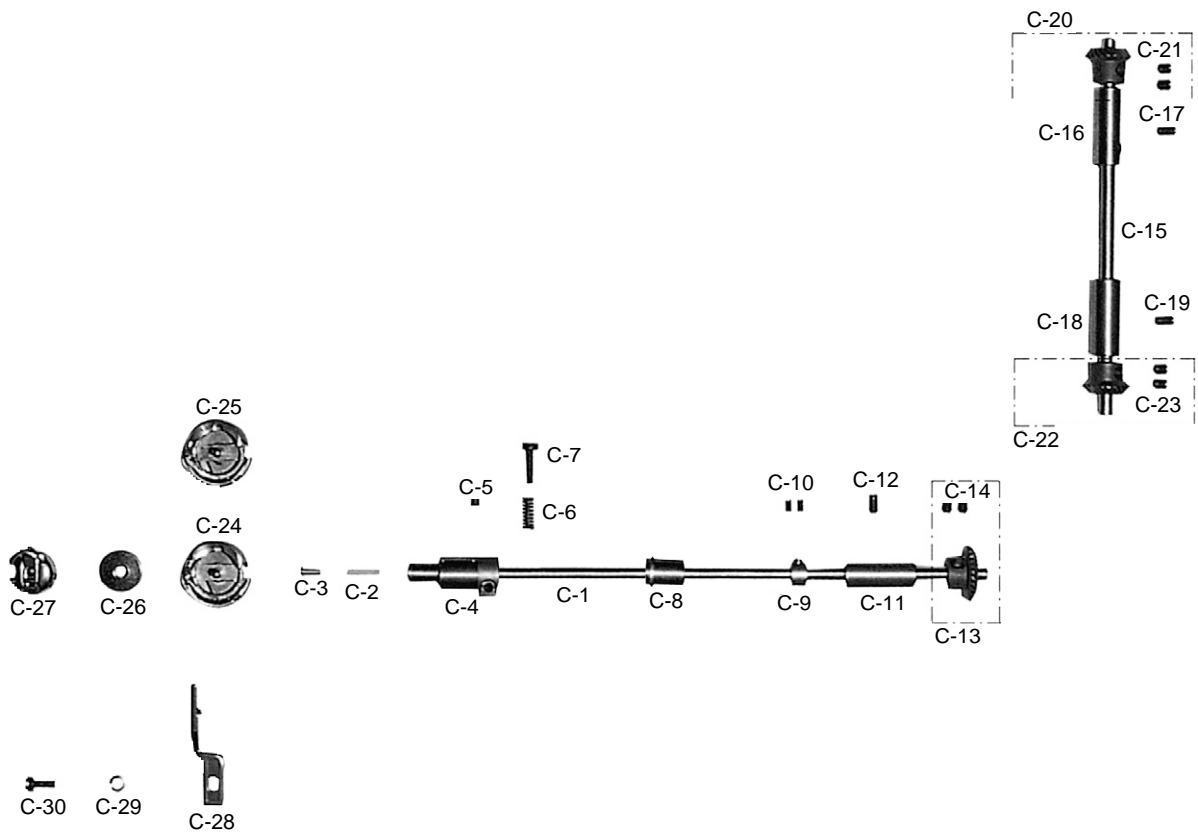
**NOTE:**

A=KM-235A  
B=KM-235B



# Upright Shaft & Lower Shaft Mechanism

## 세운축 및 하축 관계



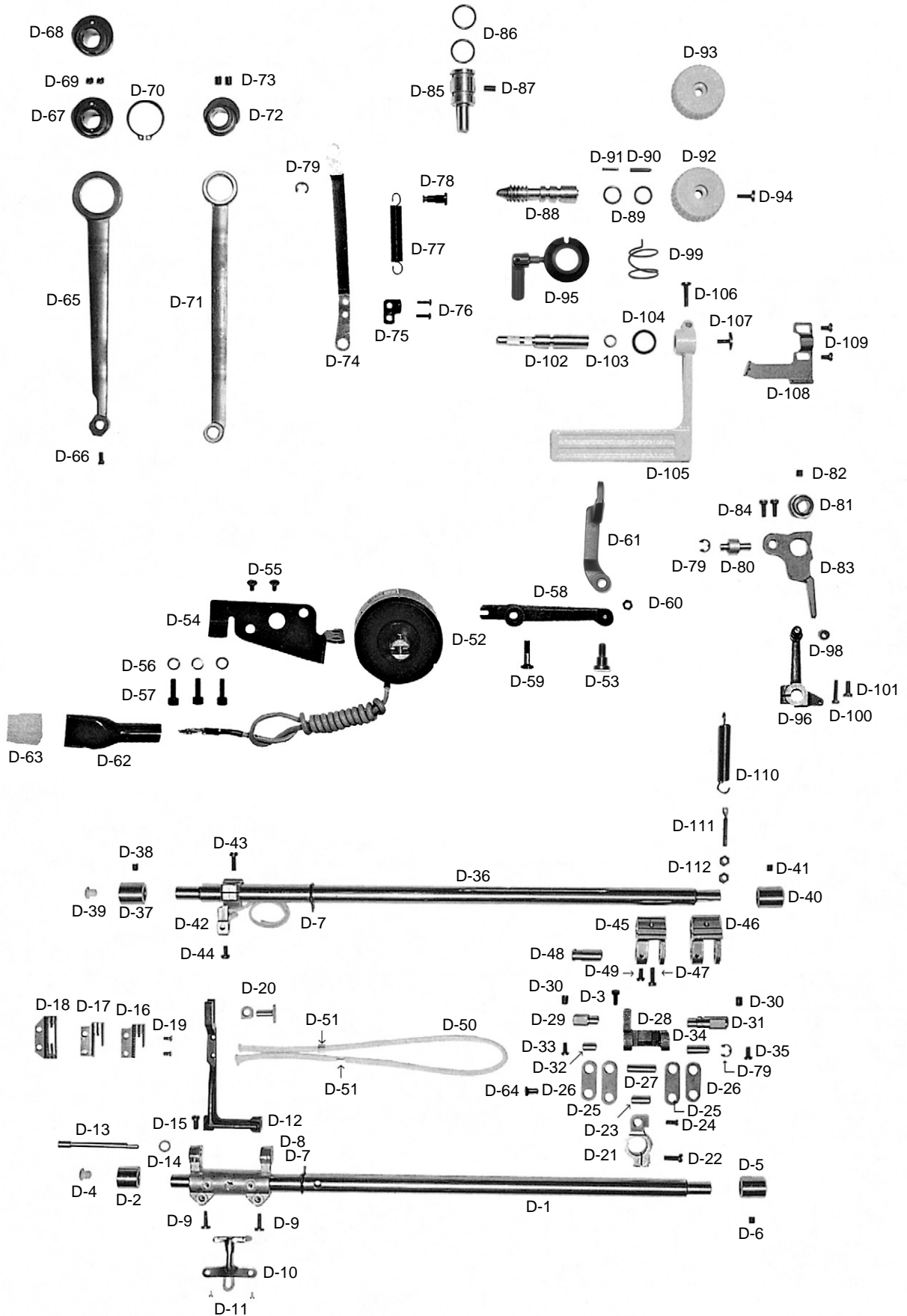
Ref. No.	Parts No.	Note	Name of Parts	품 명	Q' ty	Applied Period
C-1	07-103A-2350		Lower Shaft	하축(235A, B)	1	
C-2	07-005M-1230		Felt	하축 펠트	1	
C-3	SC-000593-00		Set Screw	하축 펠트 못이 나사	1	
C-4	07-102A-2700		Lower Shaft Bushing(Front)	하축 앞 붓싱(235A, B)	1	
C-5	SC-001231-00		Screw(15/34" n=28)	피드 캠 고정나사(15/64" n=28)	1	
C-6	07-015G-1230		Spring	하축 오일 조절나사 스프링	1	
C-7	SC-0361-1230		Screw(3/16" n=32)	하축 오일 조절나사(3/16" n=32)	1	
C-8	07-101A-2700		Lower Shaft Bushing(Center)	하축 중 붓싱	1	
C-9	DCL-AA001500		Collar(B)	오일 펌프 카라(B)	1	
C-10	DSC-CB000300		Screw(11/64" n=40)	하축 중 베어링 붓싱나사 (11/64" n=40)	2	
C-11	DBS-DA004100		Lower Shaft Rear Bushing	하축 뒷 붓싱	1	
C-12	SC-0507-1230		Screw(15/64" n=28)	상축 B/S 고정나사	1	
C-13	02-106A-1230		Lower Shaft Gear	하축 뒷 기어	1	
C-14	SC-A129-4515		Screw(1/4" n=40)	흡불이 멈춤나사(1/4" n=40)	2	
C-15	03-001A-1600		Upright Shaft	입축	1	
C-16	03-102A-1230		Vertical Shaft Upper Bushing	입축 상 붓싱	1	
C-17	SC-0507-1230		Screw(15/64" n=28)	상축 B/S 고정나사(15/64" n=28)	1	
C-18	GP-011581-00		Upright Shaft Lower Bushing	입축 하 붓싱	1	
C-19	SC-0507-1230		Screw(15/64" n=28)	상축 B/S 고정나사(15/64" n=28)	1	
C-20	02-106A-1230		Upright Shaft Upper Gear	입축 상 기어	1	
C-21	SC-0129-7400		Screw(1/4" n=40)	기어나사(1/4" n=40)	2	
C-22	02-106A-1230		Upright Shaft Lower Gear	입축 하 기어	1	
C-23	SC-0129-7400		Screw(1/4" n=40)	기어나사(1/4" n=40)	2	
C-24	07-003A-270A	A	Rotary Hook Ass'y	가마	1	
C-25	07-003A-270B	B	Rotary Hook Ass'y	가마	1	
C-26	07-105A-2700		Bobbin (A1)	보빈	1	
C-27	07-104A-2700		Bobbin Case Ass'y	보빈 케이스	1	
C-28	07-013A-1230		Hook Retainer	가마잡이	1	
C-29	DWS-CA000100		Spring Washer	가마잡이 와셔	1	
C-30	SC-0174-1230		Screw(11/64" n=40)	가마잡이 나사(11/64" n=40)	1	

**NOTE:**

A=KM-235A  
B=KM-235B

# D

## Feed Mechanism 피이드 관계



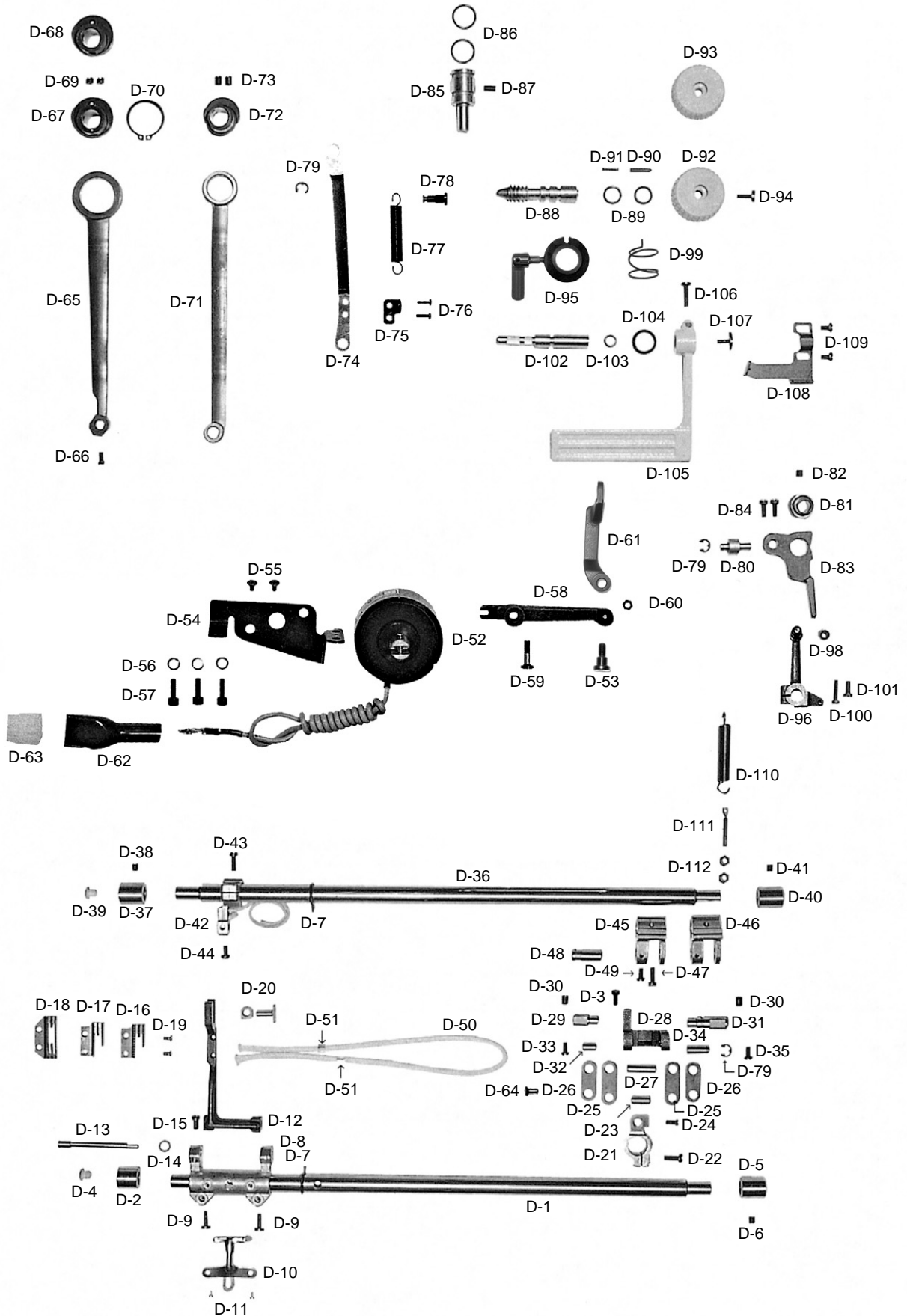
Ref. No.	Parts No.	Note	Name of Parts	품 명	Q' ty	Applied Period
D-1	06-112A-2350		Feed Roker Shaft	수평 밀대	1	
D-2	06-113A-2350		Bushing(Front)	수평 밀대 전 붓싱	1	
D-3	SC-0175-1230		Screw(11/64" n = 40)	와이롯드 보강판 나사(11/64" n=40)	1	
D-4	GP-043871-00		Rubber Cap	들밀대 유심마개	1	
D-5	06-140A-1230		Rear Bushing	들대 붓싱(후)	1	
D-6	SC-001231-00		Screw(15/64" n = 28)	피드캠 고정나사(15/64" n=28)	1	
D-7	06-021R-1230		Rubber Flange	들밀대 고무마개	2	
D-8	06-008A-2350		Feed Rocker	톱니 받침 크랭크	1	
D-9	SC-0307-1230		Screw(3/16" n = 32)	톱니 받침 크랭크 쥘나사(3/16" n=32)	2	
D-10	44-009C-1230		Retainer Plate For Oil Wick	심지 지지대	1	
D-11	SC-0133-1230		Screw(1/8" n = 44)	심지 지지대 나사(1/8" n=44)	2	
D-12	GP-034932-02		Feed Bar	톱니 받침	1	
D-13	06-114A-2350		Feed Bar Shaft	톱니 받침 축	1	
D-14	DWS-AA001500		Washer	톱니 받침 축 와셔	1	
D-15	DSC-BF000400		Screw(15/64" n = 28)	톱니 받침 축 고정나사(15/64" n=28)	1	
D-16	GP-011202-00	A	Feed Dog	톱니	1	
D-17	06-107A-123B	B	Feed Dog	톱니	1	
D-18	GP-019000-00		Feed Dog(AL-Type)	톱니(박물용)	1	
D-19	DSC-BF001800		Screw(1/8" n = 44)	톱니 쥘나사(1/8" n=44)	2	
D-20	GP-047518-00		Sliding Block and Shaft	톱니 받침 블럭	1	
D-21	06-311A-2350		Crank(Rear)	수평 밀대 크랭크(후)	1	
D-22	06-119S-1230		Screw(3/16" n = 28)	들대 크랭크(전) 쥘나사(3/16" n=28)	1	
D-23	DPN-AA000100		Pin(A)	피이드 연결 링크 핀(A)	1	
D-24	SC-0496-3710		Screw(11/64" n = 40)	하축 릿 붓싱 쥘나사(11/64" n=40)	1	
D-25	06-105A-2350		Feed Connecting Link(A)	피이드 연결 링크(A)	2	
D-26	06-106A-2350		Feed Connecting Link(B)	피이드 연결 링크(B)	2	
D-27	06-109P-2350		Pin(B)	피이드 연결 링크 핀(B)	1	
D-28	06-104A-257A		Feed Regulator Link	피이드 조절 링크	1	
D-29	06-108P-2350		Hinge Pin(B)	피이드 조절 링크 힌지 핀(B)	1	
D-30	SC-0504-1230		Screw(1/4" n = 40)	실체기 핀 고정나사(1/4" n=40)	2	
D-31	06-107P-2350		Hinge Pin(A)	피이드 조절 링크 힌지 핀(A)	1	
D-32	06-110P-2350		Pin(C )	피이드 연결 링크 핀(C)	1	
D-33	SC-0175-1230		Screw(11/64" n = 40)	와이 롯데 보강판 나사(11/64" n=40)	1	
D-34	06-023P-2350		Hinge Pin	피이드 조절 연결 롯데 힌지 핀	1	
D-35	SC-0175-1230		Screw(11/64" n = 40)	와이 롯데 보강판 나사(11/64" n=40)	1	
D-36	06-116A-2350		Feed Lifting Shaft	들대	1	
D-37	06-139A-1230		Front Bushing	들대 붓싱(전)	1	
D-38	DSC-CA000100		Screw(15/64" n = 28)	들대전부싱 고정나사(15/64" n=28)	1	
D-39	GP-043871-00		Rubber Cap	들밀대 유심마개	1	
D-40	06-140A-1230		Rear Bushing	들대 붓싱(후)	1	

**NOTE:**

A=KM-235A  
B=KM-235B

# D

## Feed Mechanism 피이드 관계





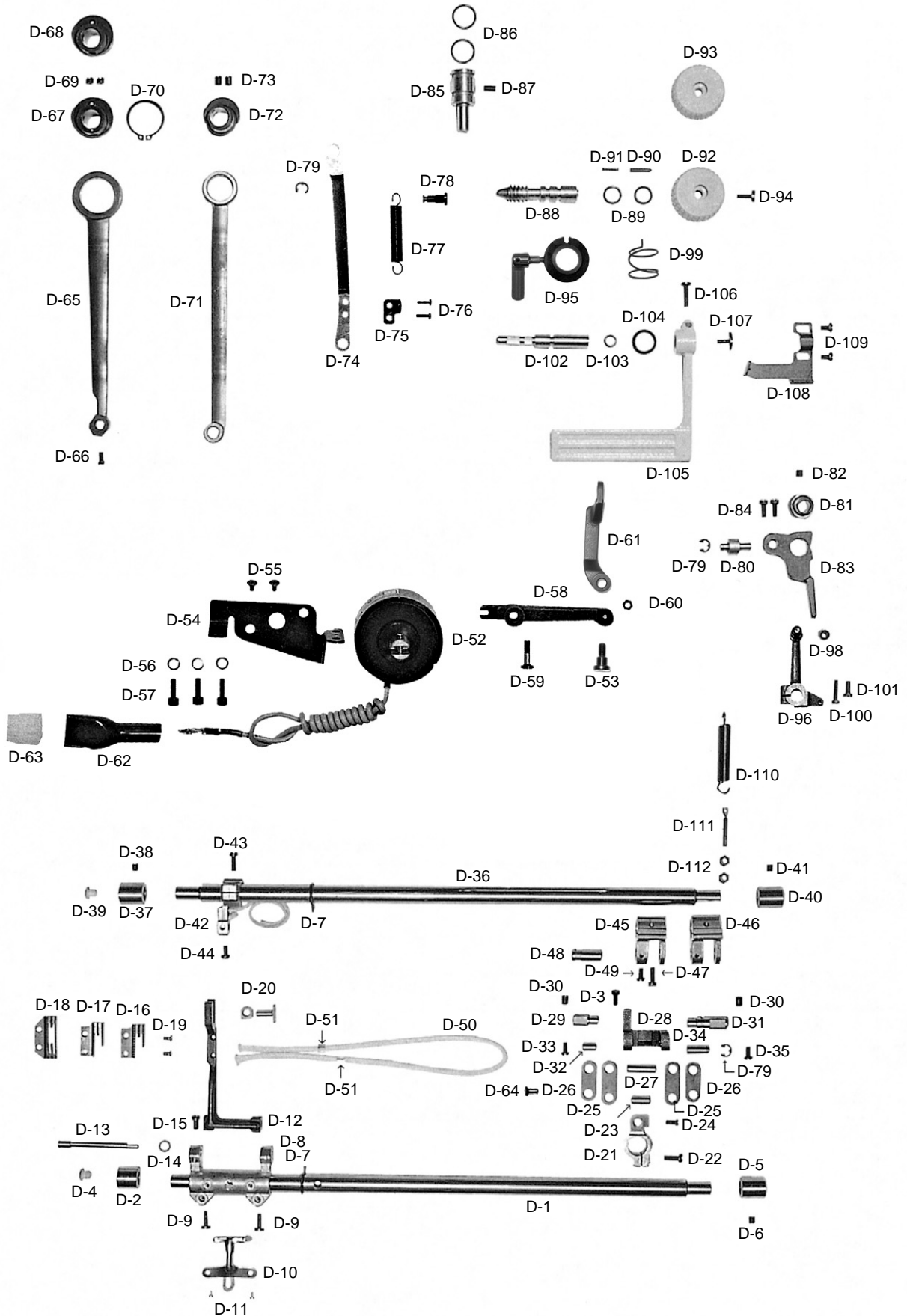
Ref. No.	Parts No.	Note	Name of Parts	품 명	Q' ty	Applied Period
D-41	DSC-CA000100		Screw(15/64" n = 28)	피드 캠 고정나사(15/64" n=28)	1	
D-42	06-128A-2350		Feed Lifting Bell Arm	들대 크랭크(전)	1	
D-43	06-119S-1230		Screw(3/16" n = 28)	들대 크랭크(전) 고정나사(3/16" n=28)	1	
D-44	06-020S-1230		Screw(3/16" n = 32)	톱니 받침 볼력 고정나사 (3/16" n=32)	1	
D-45	06-138A-235A	A	Rear Crank	들대 크랭크(후)	1	
D-46	06-141A-235B	B	Rear Crank	들대 크랭크(후)	1	
D-47	06-119S-1230		Screw(3/16" n = 28)	들대 크랭크(전) 고정나사	1	
D-48	06-037P-1230		Hinge Pin	들밀대 크랭크 핀	1	
D-49	SC-0175-1230		Screw(11/64" n = 40)	와이롯드 보강판 나사(11/64" n=40)	1	
D-50	44-0000-1230		Oil Wick	오일 심지	1	
D-51	44-029M-1230		Holder For Oil Wick	오일 심지 스톱퍼	2	
D-52	06-048A-2507		Reverse Feed Solenoid Ass'y	역진 솔레노이드(SBT-5)	1	
D-53	SC-000550-00		Stud Screw For Connecting Rod	역진 솔레노이드 연결롯드 스테드나사	1	
D-54	06-130A-257A		Bracket For Reverse Feed Solenoid	역진 솔레노이드 브라켓	1	
D-55	SC-0166-2350		Screw(M5×0.8)	역진 솔레노이드 부착나사(M5×0.8)	2	
D-56	01-020W-2350		Spring Washer For Bracket	싱크로 베이스 스프링 와셔(∅6)	3	
D-57	PSC-AC000600		Screw(M6)	싱크로 베이스 고정볼트(M6)	3	
D-58	06-131A-257A		Reverse Feed Solenoid Crank	역진 솔레노이드 크랭크	1	
D-59	06-032S-257A		Stud Screw For Solenoid Crank	역진 솔레노이드 크랭크 단나사	1	
D-60	40-005C-2700		Hinge Nut For Connecting Rod	케이블 연결너트(B)	1	
D-61	GP-018185-02		Reverse Solenoid Connecting Rod	역진 솔레노이드 연결롯드	1	
D-62	11-019M-2350		Tube	솔레노이드 튜브	1	
D-63	11-018M-2350		Plug	솔레노이드 플러그	1	
D-64	06-035A-257A		Hinge Pin For Connecting Rod	역진 솔레노이드 연결롯드 힌지핀	1	
D-65	06-103A-2500		Feed Rocker Shaft Connecting Rod	수평 이송 롯드	1	
D-66	SC-0496-3710		Screw(11/64" n = 40)	하측뿔 B/S 쥘나사(11/64" n=40)	1	
D-67	06-101A-235A	A	Feed Cam(A)	피이드 캠(A)	1	
D-68	06-101A-235B	B	Feed Cam(B)	피이드 캠(B)	1	
D-69	SC-0129-7400		Screw(1/4" n = 40)	기어나사(5-16) (1/4" n=40)	2	
D-70	06-103C-235B		Stopper C-Ring	스냅링(∅28)	1	
D-71	06-154A-1230		Crank Rod Complete	크랭크 롯드	1	
D-72	06-211A-2350		Feed Cam(C)	피이드 캠(C)	1	
D-73	SC-0504-1230		Screw(1/4" n = 40)	실채기 핀 고정나사(1/4" n=40)	2	
D-74	06-122A-2500		Connecting Rod For Feed Regulator	피이드 조절 롯드	1	
D-75	06-023C-257A		B/T Spring Holder	자동 역진 스프링 홀더	1	
D-76	DSC-BJ000300		Screw(9/64" n = 40)	톱카바 나사(우)(9/64" n=40)	2	
D-77	06-023G-257B		Reverse Feed Spring	역진 레버 스프링	1	
D-78	06-024C-257A		Holder For Reverse Feed Spring	자동 역진 스프링 걸이	1	
D-79	PSR-AC000200		E-Ring	E-링(∅5)	3	
D-80	06-221A-2350		Feed Adjusting Shaft	피이드 조절축	1	

**NOTE:**

A=KM-235A  
B=KM-235B

# D

## Feed Mechanism 피이드 관계

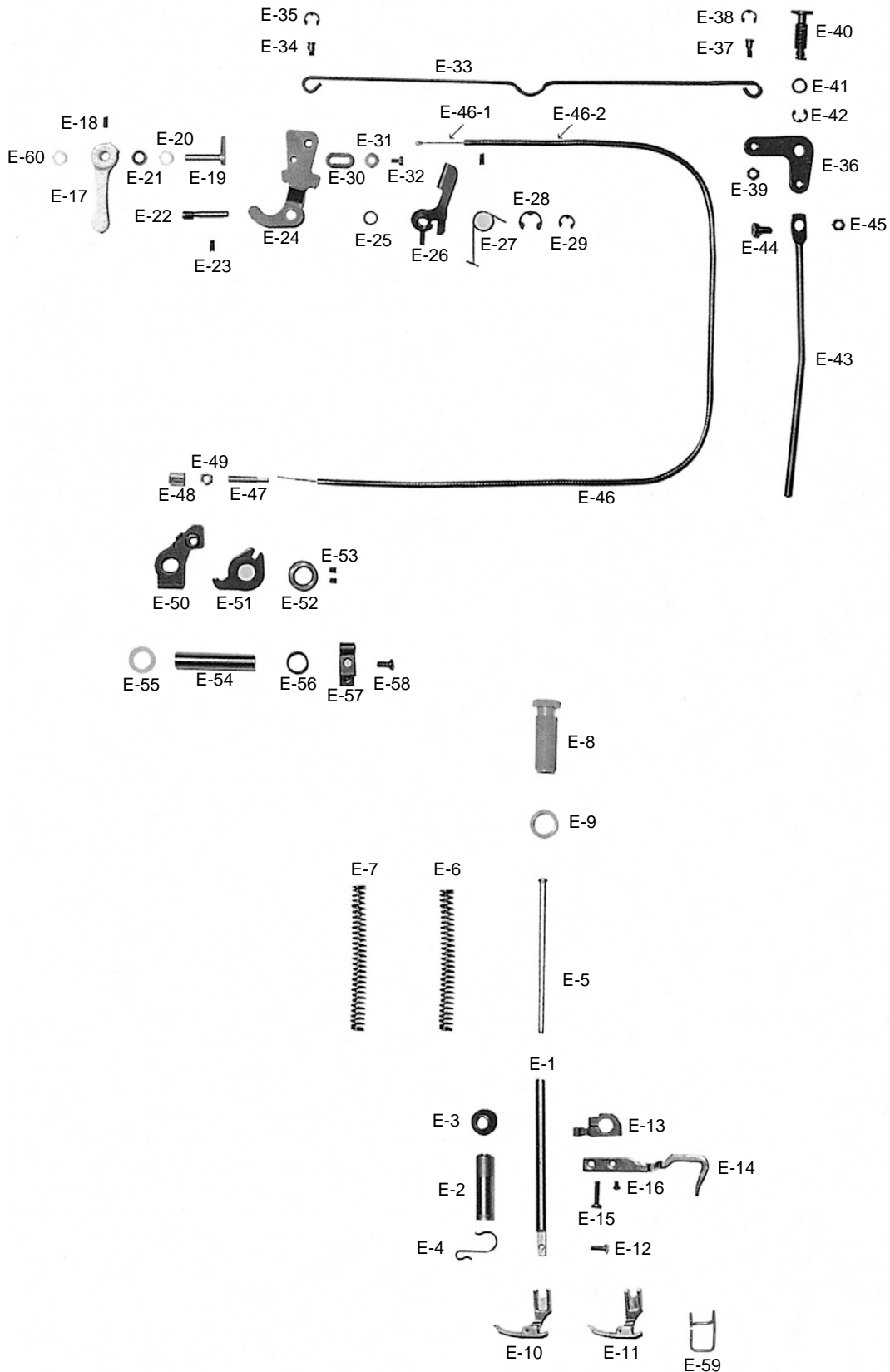


Ref. No.	Parts No.	Note	Name of Parts	품 명	Q' ty	Applied Period
D-81	06-220A-2350		Collar	피이드 조절기 축 카라	1	
D-82	SC-A129-4515		Screw(1/4" n = 40)	홈볼이 멈춤나사(1/4" n = 40)	1	
D-83	GP-008525-02		Feed Regulating	피이드 조절기	1	
D-84	DSC-BF001000		Screw(11/64" n = 40)	홈볼이 납작 작은나사(11/64" n = 40)	2	
D-85	GP-008523-00		Shaft	피이드 조절기 축	1	
D-86	06-043R-1230		O-Ring	피이드 조절기 붓싱 오링	2	
D-87	SC-0507-1230		Screw(15/64" n = 28)	상축 B/S 고정나사(15/64" n = 28)	1	
D-88	ST-000165-01		Feed Regulator Dial Shaft	피이드 조절 다이알축	1	
D-89	10-042C-2700		O-ring	다이알 축 오링	2	
D-90	PN-000794-00		Dial Pin	다이알 핀	1	Nov. 17. 09
	PN-000602-01		Dial Pin	다이알 핀	1	
D-91	06-027G-1230		Feed Regulator Dial Spring	다이알 스프링	1	
D-92	GP-047351-00	A	Feed Regulating Dial-Insert Type	다이알 판(조)	1	
D-93	06-028C-250B	B	Feed Regulating Dial-Insert Type	다이알 판(조)	1	
D-94	DSC-BF001900		Screw(3/16" n = 28)	다이알 판 고정나사(3/16" n = 28)	1	
D-95	AS-008438-02		Dial Shaft Locker A'ssy	다이알축 잠금장치(조)	1Set	
D-95-1	GP-037809-00		Dial Shaft Holder	다이알축잡이	1	
D-95-2	GP-037810-00		Dial Shaft Holder Body	다이알축잡이몸체	1	
D-95-3	GP-037811-02		Dial Shaft Stopper	다이알축스토퍼	1	
D-95-4	GP-037812-01		Dial Shaft Stopper Handle	다이알축스토퍼 손잡이	1	
D-95-5	PN-000603-00		Spring Pin	스프링핀_Ø2.5xL10	1	
D-96	06-026A-257A		Feed Regulator Arm	역진 레버 크랭크(조)	1Set	
D-97	06-034P-2350		Pin	역진 레버 크랭크 로울러 핀	1	
D-98	06-055R-2350		Roller	역진 레버 크랭크 로울러 고무	1	
D-99	GP-016351-01		Spring	다이알축 편심스프링	1	
D-100	DSC-BA000400		Screw(3/16" n = 28)	수평밀레 크랭크 첩나사(3/16" n = 28)	1	
D-101	SC-0174-1230		Screw(11/64" n = 40)	가마잡이 나사(11/64" n = 40)	1	
D-102	06-125A-2500		Shaft	역진 레버축	1	
D-103	06-042R-1230		Packing	레버축 오링	1	
D-104	06-053W-1230		Corrugated Washer	레버 와셔	1	
D-105	06-033A-2350		Reverse Feed Control Lever	역진 레버	1	
D-106	SC-0186-1230		Screw(3/16" n = 32)	역진 레버 고정나사(3/16" n = 32)	1	
D-107	SC-0185-1230		Screw(3/16" n = 32)	레버 덮개 나사(3/16" n = 32)	1	
D-108	01-014A-2350		Stopper	역진 레버 스토퍼	1	
D-109	SC-0199-2700		Screw(11/64" n = 40)	솔레노이드 부착 커버 고정나사(11/64" n = 40)	2	
D-110	06-024G-1230		Spring	역진 레버 스프링	1	
D-111	06-040S-1600		Adjusting Screw	스프링 걸이 축나사	1	
D-112	DSN-AA000900		Nut(11/64" n = 40)	S/P 걸이 축 나사 너트(11/64" n = 40)	2	

**NOTE:**

A=KM-235A  
B=KM-235B

## Press bar & Tension Release Mechanism 누름대 및 실 늦추기 관계

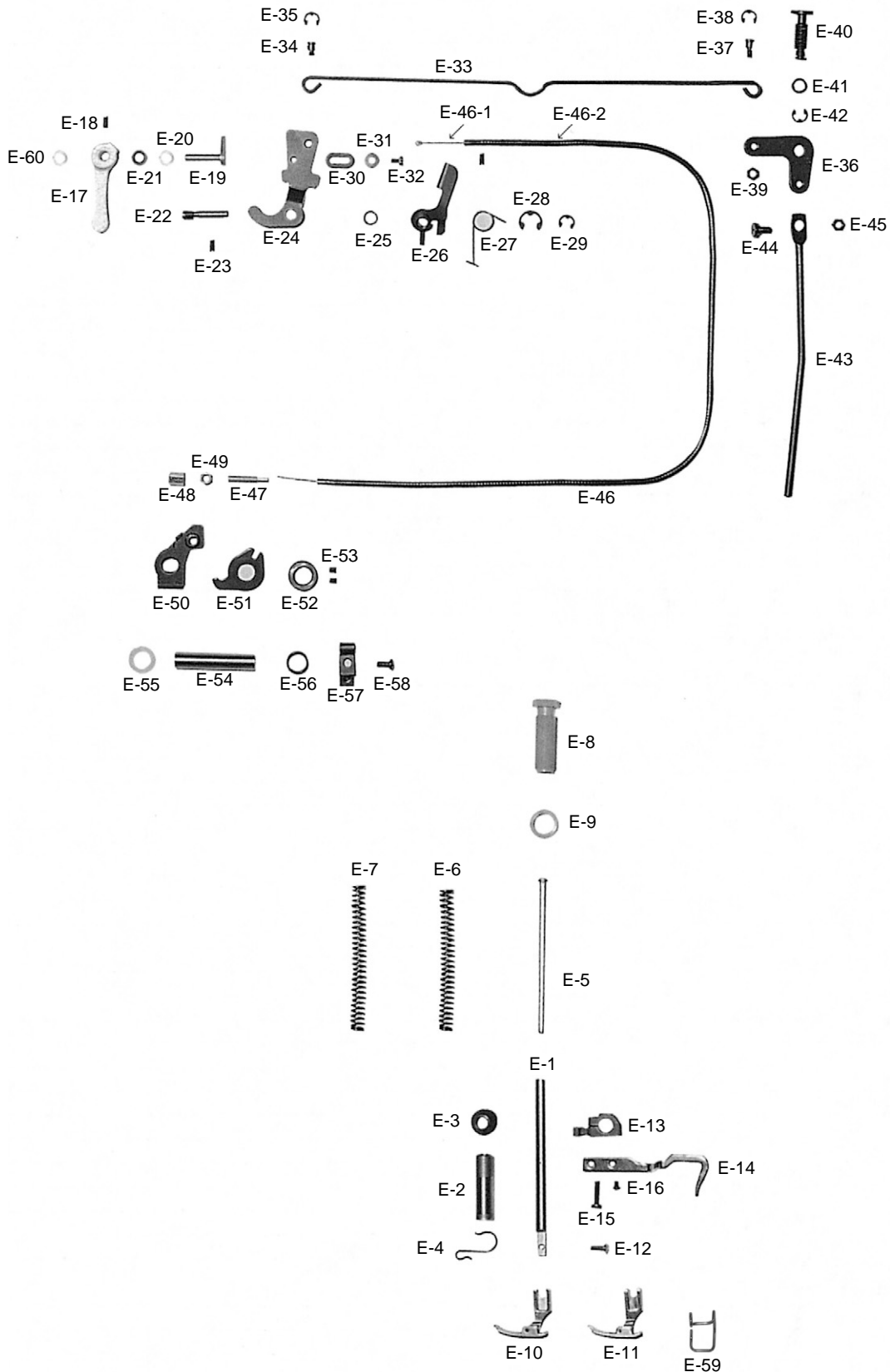


Ref. No.	Parts No.	Note	Name of Parts	품 명	Q' ty	Applied Period
E-1	CPB-KB000100		Presser Bar	누름대	1	
E-2	05-111A-1230		Bushing	누름대 붓싱	1	
E-3	05-002R-1230		Rubber Cap	누름대 붓싱 캡	1	
E-4	44-017C-1230		Retainer For Oil Tube	환류 파이프 잡이	1	
E-5	05-007C-1230		Presser Regulator Bar	압력 조절봉	1	
E-6	05-003G-235A	A	Presser Regulation Spring	압력 조절 스프링	1	
E-7	05-003G-235B	B	Presser Regulation Spring	압력 조절 스프링	1	
E-8	DSC-HA000100		Screw(9/16" n = 20)	압력 조절나사 (9/16" n = 20)	1	
E-9	DSN-CC000100		Presser Adjusting Nut	압력 조절나사 너트	1	
E-10	GP-013150-00	A	Hinged Foot Complete	노루발(조)	1Set	
E-11	05-012A-1230	B	Hinged Foot Complete	노루발(조)	1Set	
E-12	DSC-BA000200		Screw(9/64" n = 40)	홈볼이 냄비 작은나사 (9/64" n = 40)	1	
E-13	05-103A-1370		Holder	누름대 잡이	1	
E-14	GP-023786-00		Thread Guide For Frame	실결이 판	1	
E-15	DSC-BF001200		Screw(11/64" n = 40)	가마잡이 나사(11/64" n = 40)	1	
E-16	DSC-BJ001400		Screw(9/64" n = 40)	윗뚜껑 고정판 고정나사(9/64" n = 40)	1	
E-17	43-001A-2500		Presser Bar Lifter Lever	누름대 올리기	1	
E-18	DSC-BJ000300		Screw(11/64" n = 40)	뜸니 커버 나사(우)	1	
E-19	05-007A-1370		Cam Shaft	누름대 올림기 캠축	1	
E-20	02-019W-1230		Felt Washer	상축 felt 와셔	1	
E-21	DWS-AA003800		Washer	실 낮추기 축 와셔	1	
E-22	40-004A-2350		Shaft	실 낮추기 축	1	
E-23	DSC-CB000300		Screw(11/64" n = 40)	하축 중 베어링 고정나사(11/64" n = 40)	2	
E-24	05-109A-1600		Knee Lifter Plate	노루발 인상판	1	
E-25	40-005W-2350		Washer	실 낮추기 축 와셔	1	
E-26	40-001A-2350		Thread Tension Release Plate	실 낮추기(조)	1	
E-27	40-003G-2350		Spring	실 낮추기 스프링	1	
E-28	PSR-AC000800		E-Ring	실 낮추기 안내 붓싱 E링(∅8)	1	
E-29	PSR-AC000200		E-Ring	E-링(∅5)	1	
E-30	GP-047848-00		Stopper	실 낮추기 스토퍼	1	Nov. 26. 09
	40-002C-1600		Stopper	실 낮추기 스토퍼	1	

**NOTE:**

A=KM-235A  
B=KM-235B

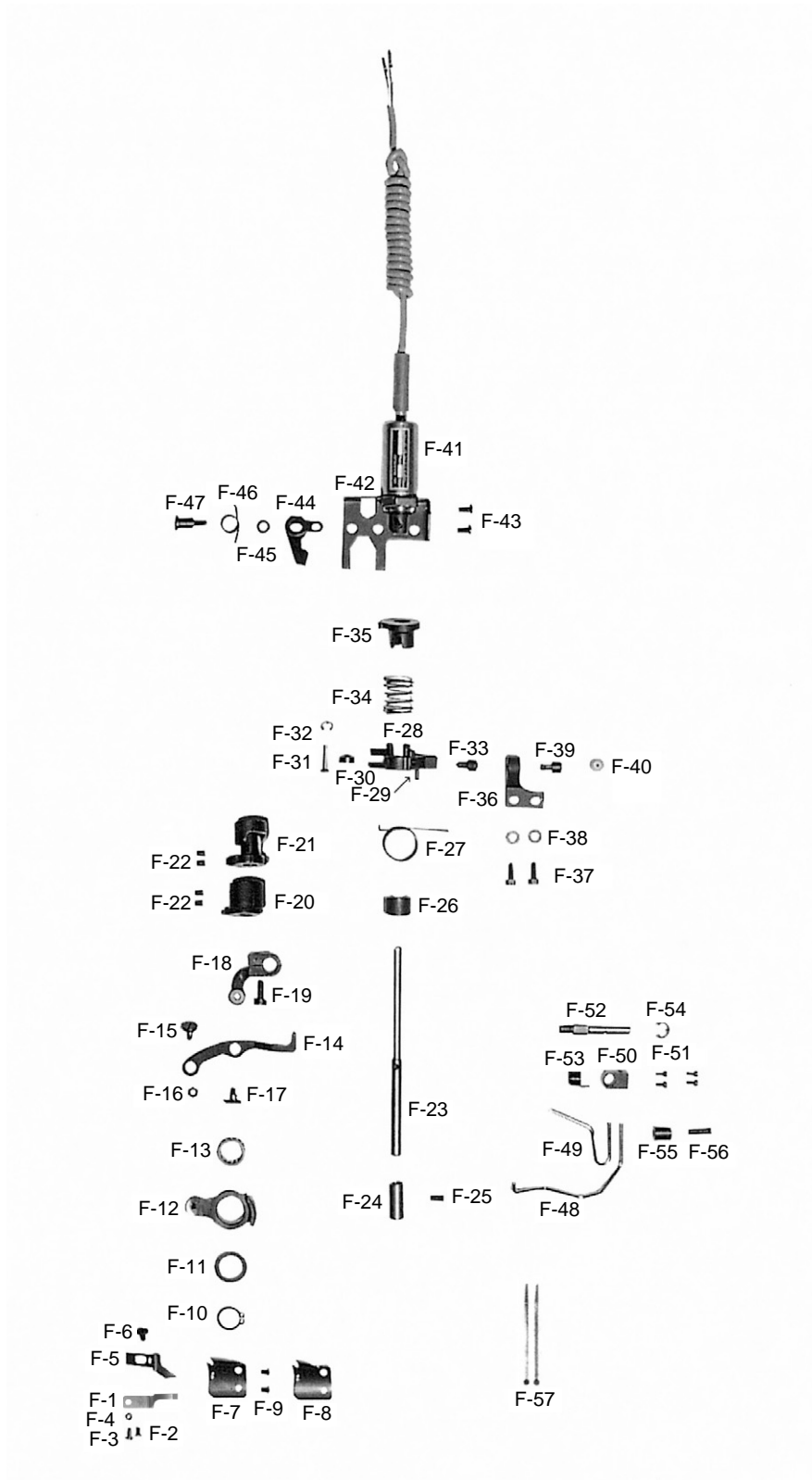
## Press bar & Tension Release Mechanism 누름대 및 실 늦추기 관계



Ref. No.	Parts No.	Note	Name of Parts	품 명	Q' ty	Applied Period
E-31	DWS-AA000500		Washer	실 늦추기 스톱퍼 와셔	1	
E-32	SC-001794-00		Screw(9/64" n = 40)	실 늦추기 스톱퍼 쥘나사(9/64" n=40)	1	Dec. 16. 09
	SC-0506-1600		Screw(9/64" n = 40)	실 늦추기 스톱퍼 쥘나사(9/64" n=40)	1	
E-33	43-002G-2350		Connecting Rod	누름대 올리기 연결봉	1	
E-34	43-017S-1600		Hinge Screw	누름대 올리기 연결봉 단나사(소)	1	
E-35	PSR-AC000200		E-Ring	E-링(∅5)	1	
E-36	43-112A-2350		Knee Lifting Link	무릎 올림 링크	1	
E-37	43-016S-1600		Hinge Screw	누름대 올리기 연결봉 단나사(대)	1	
E-38	PSR-AC000200		E-Ring	E-링(∅5)	1	
E-39	DSN-AA000600		Nut(3/16" n = 32)	오프너 너트(3/16" n = 32)	1	
E-40	43-014S-2350		Hinge Screw	무릎 올림 링크 힌지나사	1	
E-41	06-051R-1600		O-Ring	역진 레버 축 오링	1	
E-42	PSR-AC000200		E-Ring	E-링(∅5)	1	
E-43	43-011C-2350		Knee Lifting Rod	무릎 올림 봉	1	
E-44	43-013S-2350		Hinge Screw	무릎 올림 봉 단나사	1	
E-45	DSN-AA000600		Nut(3/16" n = 32)	오프너 너트(3/16" n = 32)	1	
E-46	GP-047346-01		Tension Release Cable	실 늦추기 케이블(조)	1Set	
E-46-1	AS-000042-00		Wire Rope	와이어 로우프	1	
E-46-2	AS-000042-00		Cable	실 늦추기 케이블	1	
E-47	GP-022094-00		Connecting Bolt	케이블 연결 볼트	1	
E-48	40-004C-2700		Nut(A)	케이블 연결 너트(A)	1	
E-49	40-005C-2700		Nut(B)	케이블 연결 너트(B)	1	
E-50	10-035A-2700		Operating Lever For Thread Release	실 늦추기 작동 레버	1	
E-51	10-038A-2700		Cam Driving Lever	캠 접촉 레버	1	
E-52	10-139A-2700		Collar	캠 접촉 카라	1	
E-53	DSC-CB000700		Screw(M5)	캠 접촉 카라 고정나사(M5)	1	
E-54	10-134A-2700		Pipe For Thread Release Lever	실 늦추기 레버 파이프	1	
E-55	10-041W-2700		Flat Washer	평 와셔	1	
E-56	10-042C-2700		O-Ring	오링(P11)	1	
E-57	40-107C-2700		Cable Clip(A)	케이블 클립(A)	1	
E-58	DSC-BA000700		Screw(3/16" n = 32)	툽니 받침 볼록 고정나사 (3/16" n=32)	1	
E-59	40-100A-2350		Safety Guide	안전 가이드	1	
E-60	DWS-AA000500		Washer	평와셔	1	

**NOTE:**

A=KM-235A  
B=KM-235B

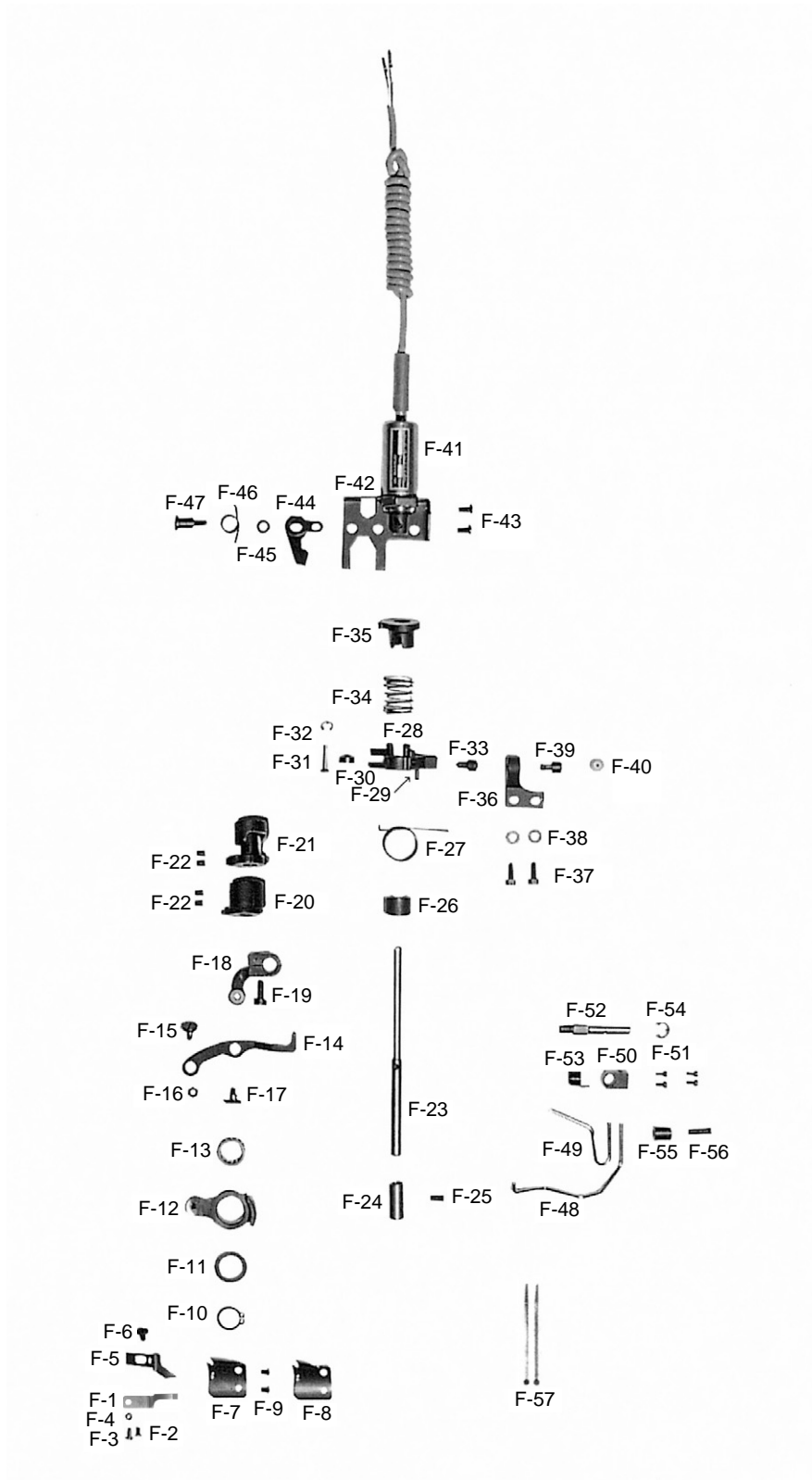




Ref. No.	Parts No.	Note	Name of Parts	품 명	Q' ty	Applied Period
F-1	10-101A-2700		Fixed Mes	고정메스	1	
F-2	SC-A301-4119		Screw(9/64" n = 40)	고정메스 고정나사(9/64" n=40)	1	
F-3	SC-0137-2700		Screw(1/8" n = 40)	고정메스 장력 조절나사(1/8" n=40)	1	
F-4	SN-0103-2700		Nut(1/8" n = 40)	고정메스 장력 조절나사 너트(1/8" n=40)	1	
F-5	10-005A-2700		Thread Detachable Plate	실 가리개	1	
F-6	SC-0199-2700		Screw(11/64" n = 40)	슬레노이드 부착 커버 고정나사(11/64" n=40)	1	
F-7	10-106A-2700	A	Rotary Mes	회전메스	1	
F-8	10-106A-235B	B	Rotary Mes	회전메스	1	
F-9	SC-A154-4114		Screw(11/64" n = 40)	회전메스 고정나사(11/64" n=40)	2	
F-10	10-009C-2700		Stopper C-Ring	스냅링(∅15)	1	
F-11	10-110W-2700		Washer	사절 홀더 와셔	1	
F-12	10-108A-2700		Holder	사절 홀더	1	
F-13	10-011A-2700		Needle Bearing	니들 베어링	1	
F-14	10-112A-2700		Connecting Link	연결 링크	1	
F-15	10-113S-2700		Pivot Screw	연결 링크 단나사(대)	1	
F-16	DSN-AA000900		Nut(11/64" n = 40)	S/P 절이축 나사 너트(11/64" n=40)	1	
F-17	10-013S-2700		Pivot Screw	연결 링크 단나사(소)	1	
F-18	10-115A-2700		Thread Trimmer Lever	사절 레버	1	
F-19	DSC-BF000700		Screw(15/64" n = 28)	베이스 고정나사 B(15/64" n=28)	1	
F-20	10-133A-2700		Reversal Cam	역전캠(K1895)	1	
F-21	GR-000026-01		Thread Trimmer Gear Assembly	사절 기어(조)	1set	Dec. 04. 09
F-22	DSC-CB000500		Screw(15/64" n = 28)	캠 접촉안내 고정나사(15/64" n=28)	4	
F-23	10-117A-2700		Thread Trimmer Shaft	사절 축	1	
F-24	10-116A-2700		Bushing	사절 축 붓싱	1	
F-25	SC-0507-1230		Screw(15/64" n = 28)	상축 B/S 고정나사(15/64" n=28)	1	
F-26	10-027A-2700		Spring Guide	스프링 안내	1	
F-27	10-026G-2700		Spring	스토퍼 레버 스프링	1	
F-28	10-022A-2700		Stopper Lever	스토퍼 레버	1	
F-29	12-004C-2350		Stopper Pin	스토퍼 핀(3×14)	1	

**NOTE:**

A=KM-235A  
B=KM-235B



Ref. No.	Parts No.	Note	Name of Parts	품 명	Q' ty	Applied Period
F-30	10-023A-2700		Collar	스토퍼 레버 카라	1	
F-31	10-024C-2700		Collar Shaft	스토퍼 레버 카라 축	1	
F-32	PSR-AC000300		Stop Ring	인상판 E링(Ø4)	1	
F-33	SC-0324-2700		Screw(1/4" n = 40)	스토퍼 레버 고정나사(1/4" n = 40)	1	
F-34	10-028G-2700		Spring	사절구동기어(B) 스프링	1	
F-35	GR-000027-00		Thread Trimmer Gear "B"	사절구동기어(B) (K1896)	1	
F-36	10-118A-2700		Stopper	스토퍼(K1886)	1	
F-37	SC-0190-2700		Screw(3/16" n = 32)	스토퍼 쥘나사(3/16" n = 32)	2	
F-38	DWS-AA000600		Washer	스토퍼 쥘 와셔	2	
F-39	10-021R-2700		Cushion Rubber (A)	스토퍼 쿠션 고무	1	
F-40	01-008R-2350		Cushion Rubber	쿠션 고무	1	
F-41	10-044A-2700		Trimmer Solenoid Assembly	사절 솔레노이드(조)	1Set	
F-42	10-045A-2700		Solenoid Base	솔레노이드 받침	1	
F-43	DSC-BA000700		Screw(3/16" n = 32)	톱니 받침 볼력 고정나사(3/16" n = 32)	2	
F-44	10-036A-2700		Clutch Lever	클러치 레버	1	
F-45	DWS-AA000600		Washer	스토퍼 쥘 와셔	1	
F-46	10-037G-2700		Spring	클러치 스프링	1	
F-47	10-043S-2700		Pivot Screw	클러치 레버 단나사	1	
F-48	GP-035920-00		Bobbin Presser Bar	보빈 압력봉	1	
F-49	01-013C-2350		Lever	레버	1	
F-50	01-114C-2350		Holder	레버잡이	1	
F-51	DSC-BF000100		Screw(1/8" n = 44)	바늘대 실걸이 쥘나사(1/8" n = 44)	4	
F-52	01-105A-2350		Bed Leg Rear	베드 받침(전)	1	
F-53	01-015C-2350		Spring	보빈 압력 스프링	1	
F-54	PSR-AC000500		E-Ring(Ø6)	E링(Ø6)	1	
F-55	01-016R-2700		Stopper Rubber	보빈 압력봉 스토퍼	1	
F-56	SC-0508-1230		Screw(15/64" n = 28)	풀리 고정나사(15/64" n = 28)	1	
F-57	02-003A-2700		Nylon Clip	나일론 클립	2	

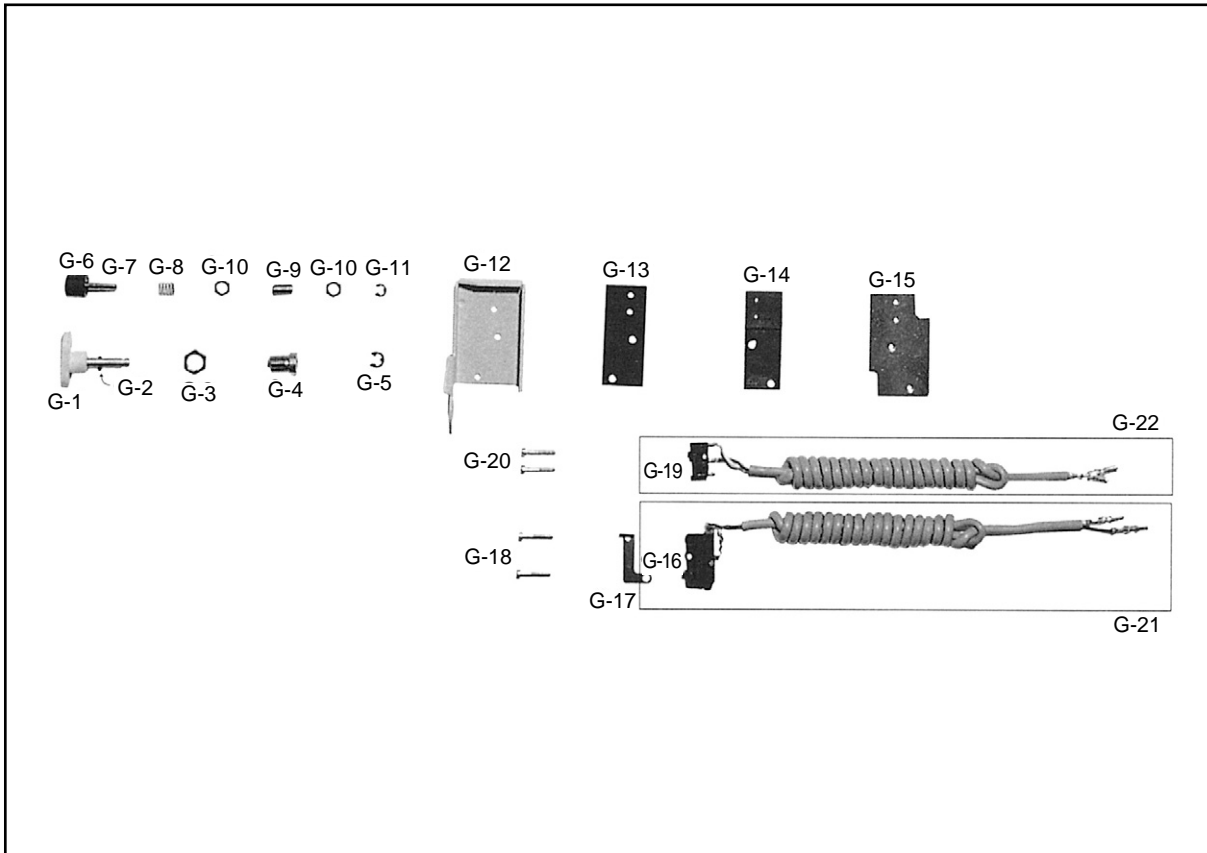
**NOTE:**

A=KM-235A  
B=KM-235B



# Reverse Button Mechanism

## 역진 버튼 관계



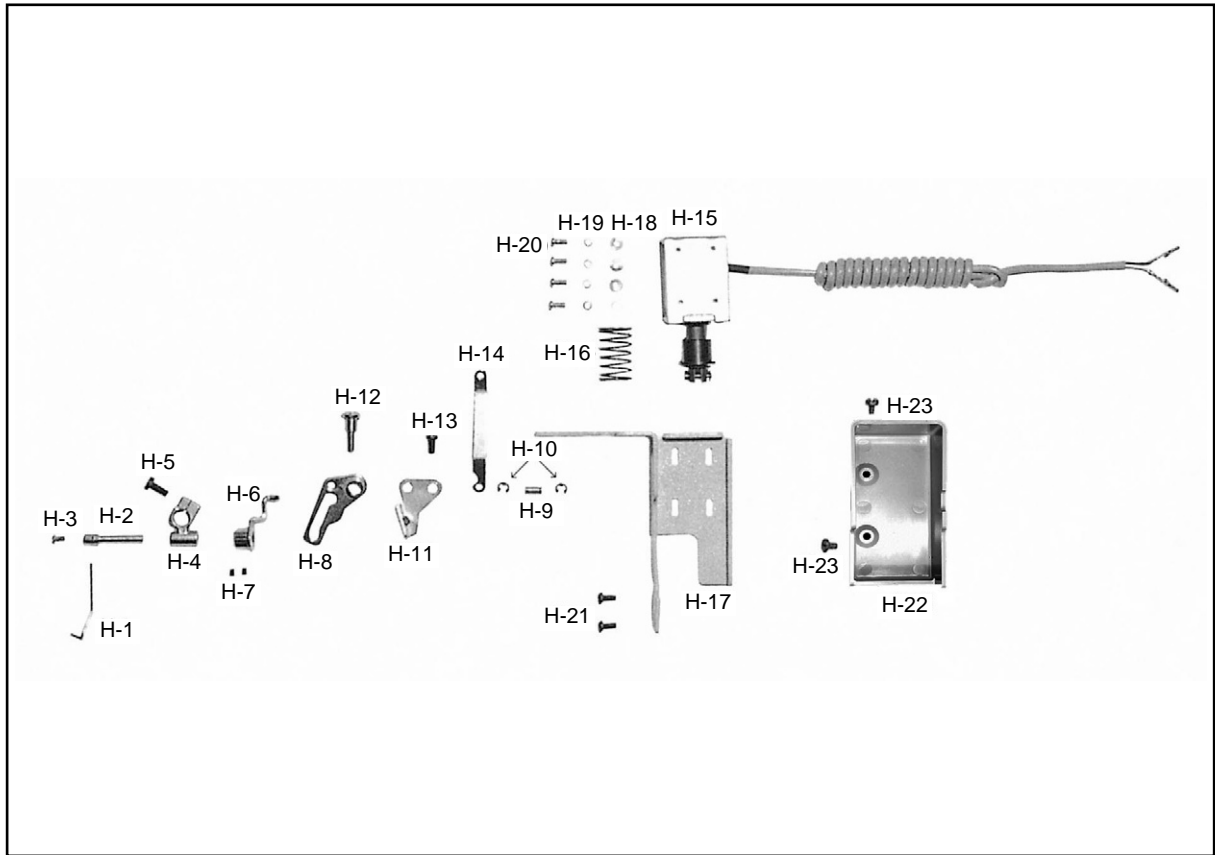
Ref. No.	Parts No.	Note	Name of Parts	품 명	Q' ty	Applied Period
G-1	12-003A-2350		Reverse Button Ass'y	역진버튼(조)	1Set	
G-2	44-120P-1230		Stopper Pin(2×8)	롤핀(2×8)	1	
G-3	12-006C-2350		Nut	역진 버튼 축 안내 붓싱 캡너트	1	
G-4	12-005A-2350		Guide Bushing	역진 버튼 축 안내붓싱	1	
G-5	PSR-AC000300		Stop Ring	인상판 E링(∅4)	1	
G-6	12-009C-2700		Reverse Selection Button	버튼(B)	1	
G-7	12-005A-2700		Shaft	버튼 지지축	1	
G-8	12-008G-2700		Spring	버튼(B) 완충 스프링	1	
G-9	12-006S-2700		Support Screw	버튼 지지나사	1	
G-10	12-007C-2700		Nut	버튼 지지나사 캡너트	2	
G-11	PSR-AC000400		E-Ring	톱니 받침 블럭 축 E링(∅3)	1	
G-12	12-001A-2350		Button Case	버튼 케이스	1	
G-13	12-010R-2350		Insulated Rubber(B) For Switch	스위치 받침 절연고무(B)	1	
G-14	12-009R-2350		Insulated Rubber (A) For Switch	스위치 받침 절연고무(A)	1	
G-15	12-002C-2350		Cover	버튼 케이스 커버	1	
G-16	12-107A-2350		Reverse Button Switch	역진 버튼 스위치	1	
G-17	12-008C-2350		Pushing Plate	역진 버튼 스위치 누름판	1	
G-18	SC-0336-2350		Screw(1/8" n=44)	스위치 고정볼트(1/8" n=44)	2	
G-19	12-004A-2700		Reverse Selection Switch	스위치	1	
G-20	SC-0337-2350		Screw(M2×0.4)	스위치 고정볼트 B(M2×0.4)	2	
G-21	CA-005054-00		Reverse Selection Switch Ass'y	역진 버튼 스위치	1	Oct. 12. 09
	12-107A-2350		Reverse Selection Switch Ass'y	역진 버튼 스위치	1	
G-22	12-104A-2700		Reverse Selection Switch Ass'y	역진 버튼 스위치	1	

**NOTE:**

A=KM-235A  
B=KM-235B



# Thread Wiper Mechanism 와이퍼 관계



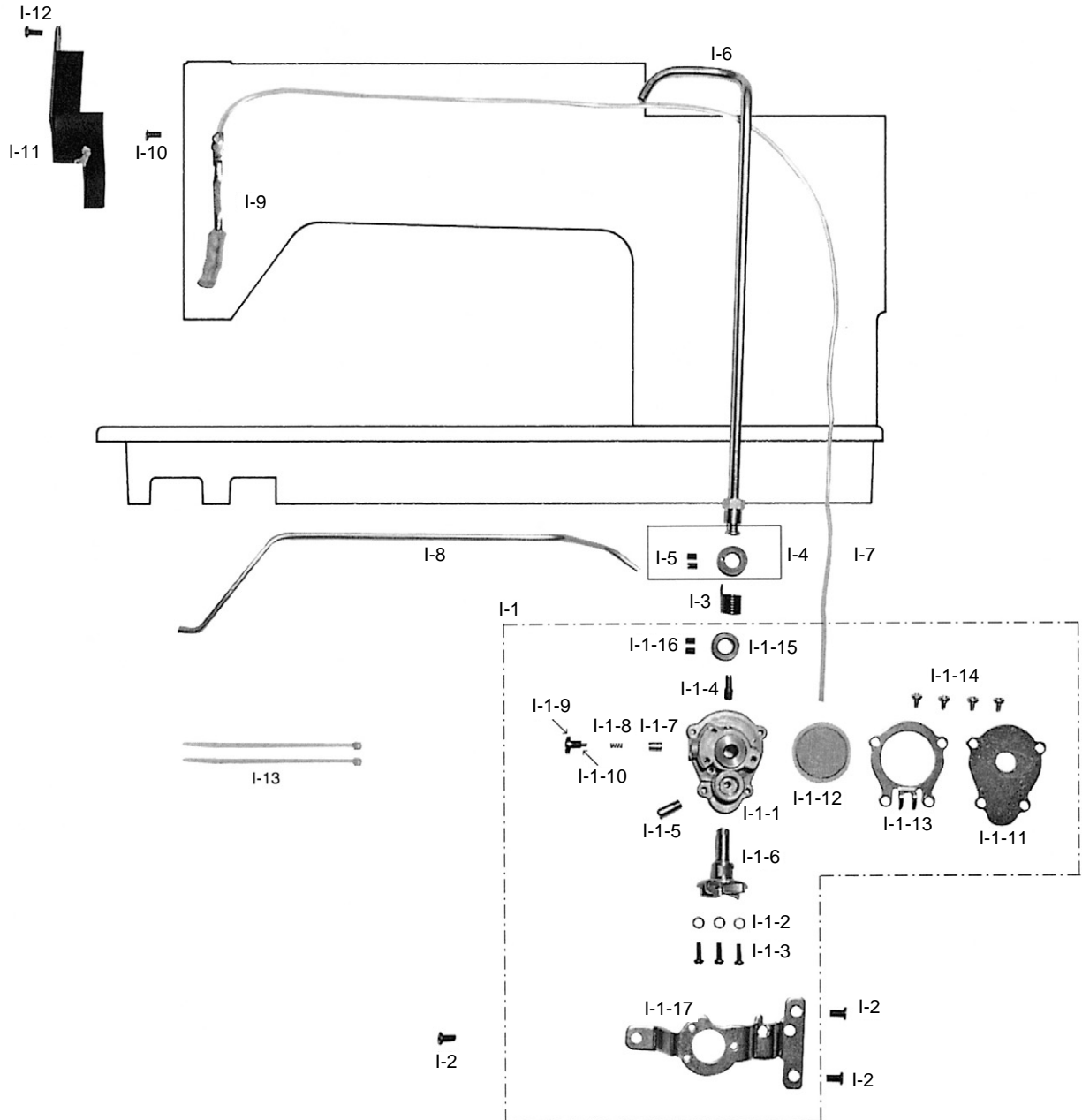
Ref. No.	Parts No.	Note	Name of Parts	품 명	Q' ty	Applied Period
H-1	11-003C-2700		Wiper	와이퍼	1	
H-2	11-104A-2700		Wiper Rotary Shaft	와이퍼 회전축	1	
H-3	DSC-BF001800		Screw(1/8" n = 44)	톱니 쥘나사(1/8" n = 44)	1	
H-4	11-101A-2700		Holder	와이퍼 회전축 잡이(K1900)	1	
H-5	SC-0174-1230		Screw(11/64" n = 40)	가마잡이 나사(11/64" n = 40)	1	
H-6	11-005A-2700		Wiper Crank	와이퍼 크랭크	1	
H-7	SC-A104-4517		Screw(11/64-40-5)	육각구멍붙이 멈춤나사(11/64')	2	
H-8	11-009A-2350		Crank Rotary Plate	크랭크 회전판	1	
H-9	11-013P-2700		Hinge Pin	크랭크 회전판 힌지핀	1	
H-10	PSR-AC000400		E-Ring	톱니 받침 블럭축 E링(∅3)	2	
H-11	11-008A-2700		Crank Rotary Regulator Plate	크랭크 회전 조절판	1	
H-12	11-010S-2350		Hinge Screw	와이퍼 크랭크 힌지 단나사	1	
H-13	DSC-BA000700		Screw(3/16" n = 32)	톱니 받침 블럭 고정나사(3/16" n = 32)	1	
H-14	11-012A-2700		Connecting Rod	회전판 연결 로드	1	
H-15	11-015A-2700		Wiper Solenoid Assembly	와이퍼 솔레노이드(조)	1Set	
H-16	11-019G-2700		Solenoid Tension Spring	솔레노이드 스프링	1	
H-17	11-114A-2700		Solenoid Bracket	솔레노이드 부착 브라켓	1	
H-18	PWS-AA000500		Flat Washer	솔레노이드 부착 평와셔	4	
H-19	PWS-CA000100		Spring Washer	솔레노이드 부착 스프링 와셔	4	
H-20	PSC-BA000100		Screw(M3×0.5)	솔레노이드 부착 고정나사(M3×0.5)	4	
H-21	SC-0175-1230		Screw(11/64" n = 40)	와이퍼 보강판 나사	2	
H-22	11-121A-2700		Cover	솔레노이드 부착 커버	1	
H-23	DSC-BA000100		Screw(9/64" n = 40)	오일펌프 커버나사(9/64" n = 40)	2	

**NOTE:**

A=KM-235A  
B=KM-235B

# Lubrication

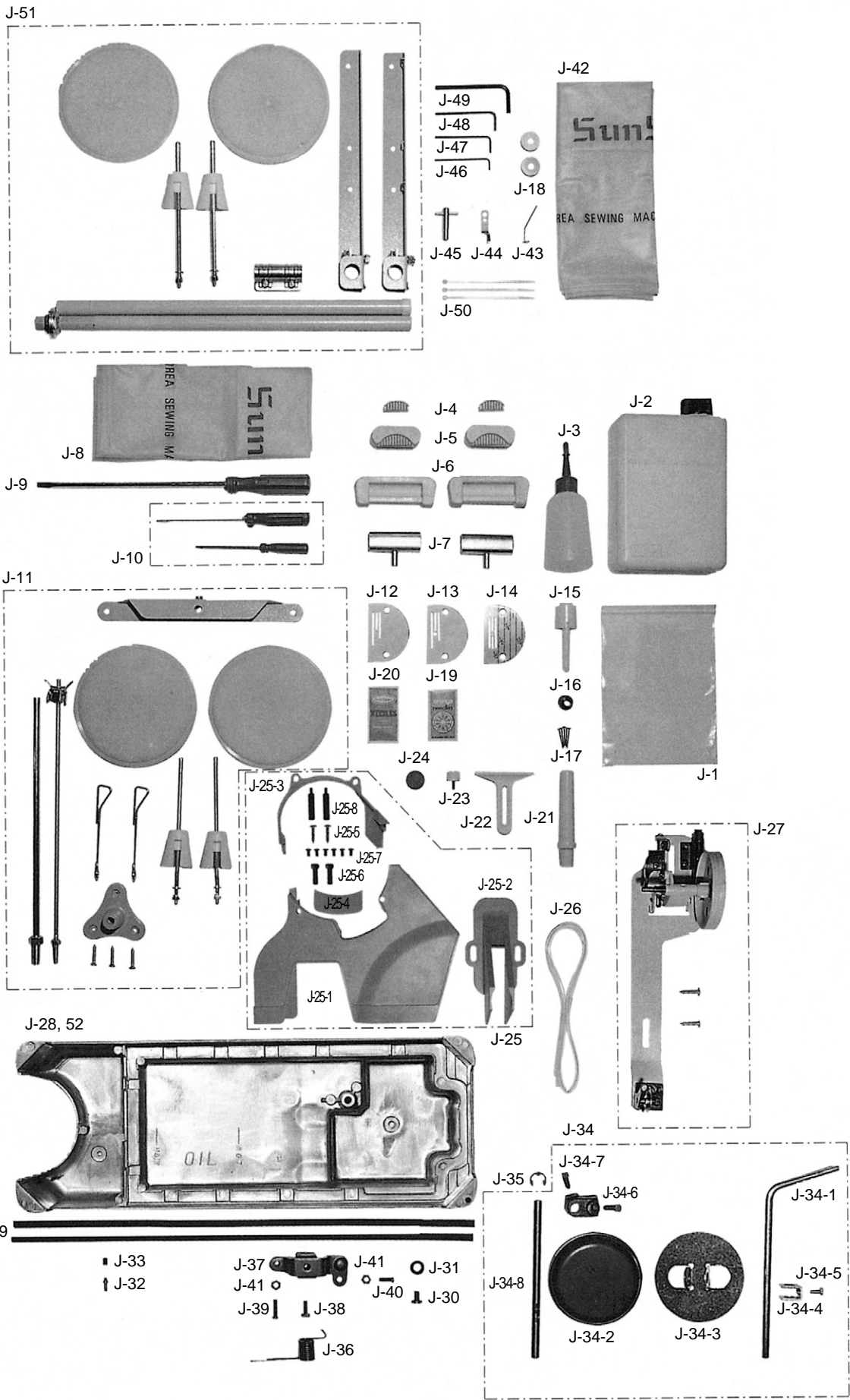
## 급유 관계



Ref. No.	Parts No.	Note	Name of Parts	품 명	Q' ty	Applied Period
I-1	44-150A-2350		Oil Pump Ass'y	오일펌프(조)	1Set	
I-1-1	44-012A-2350		Oil Pump Body	오일펌프 몸체	1	
I-1-2	PWS-CA000200		Washer	오일 펌프 몸체 겹나사 와셔	3	
I-1-3	DSC-BJ000300		Screw(9/64" n = 40)	톱니 커버 나사(우) (9/64" n=40)	3	
I-1-4	44-010C-1600		Nipple For Oil Return Pipe	환류 파이프 니플	1	
I-1-5	44-009C-1600		Nipple For Lower Shaft	하축 급유 니플	1	
I-1-6	44-126A-1230		Impeller	임펠라	1	
I-1-7	GP-037562-00		Piston	피스톤	1	
I-1-8	44-118G-1230		Piston Spring	피스톤 스프링	1	
I-1-9	44-119S-1230		Pin Screw	피스톤 스프링핀 나사	1	
I-1-10	44-120P-1230		Pin	피스톤 스프링핀(RP2×8)	1	
I-1-11	44-104C-2350		Oil Pump Cover	오일펌프 커버	1	
I-1-12	44-024C-1230		Oil Pump Cap	오일 펌프 헬트 캡	1	
I-1-13	44-105C-2350		Magnet Holder	자석 잡이	1	
I-1-14	44-120S-1230		Screw(11/64" n = 40)	오일 펌프 커버 나사 (11/64" n=40)	4	
I-1-15	44-119A-1230		Collar For Impeller Shaft	오일 펌프 카라	1	
I-1-16	DSC-CA000400		Screw(11/64" n = 40)	오일 펌프 조인트 나사(11/64" n=40)	2	
I-1-17	44-101A-2350		Oil Pump Bracket	오일 펌프 브라켓	1	
I-2	DSC-BF000600		Screw(3/16" n = 28)	다이알 판 겹나사(3/16" n=28)	3	
I-3	44-016G-1230		Spring Joint	오일 펌프 조인트 스프링	1	
I-4	44-115A-1230		Collar	오일 펌프 조인트 카라	1	
I-5	DSC-CA000400		Screw(11/64" n = 40)	오일 펌프 조인트 나사(11/64" n=40)	2	
I-6	44-002A-2350		Main Shaft Oil Pipe Ass'y	상축 급유 파이프	1	
I-7	44-012C-1230		Oil Return Tube	환류 파이프	1	
I-8	GP-046688-00		Lower Shaft Oil Pipe	하축 급유 파이프	1	
I-9	44-117A-1600		Holder	환류 파이프 잡이	1	
I-10	SC-0175-1230		Screw(11/64" n = 40)	와이롯드 보강판 나사(11/64" n=40)	1	
I-11	44-120A-1600		Oil Shield	면판 유방판	1	
I-12	DSC-BA000300		Screw(11/64" n = 40)	테이프 안내 겹나사(11/64" n=40)	1	
I-13	02-003A-2700		Nylon Clip	나이론 클립	2	

**NOTE:**

A=KM-235A  
B=KM-235B

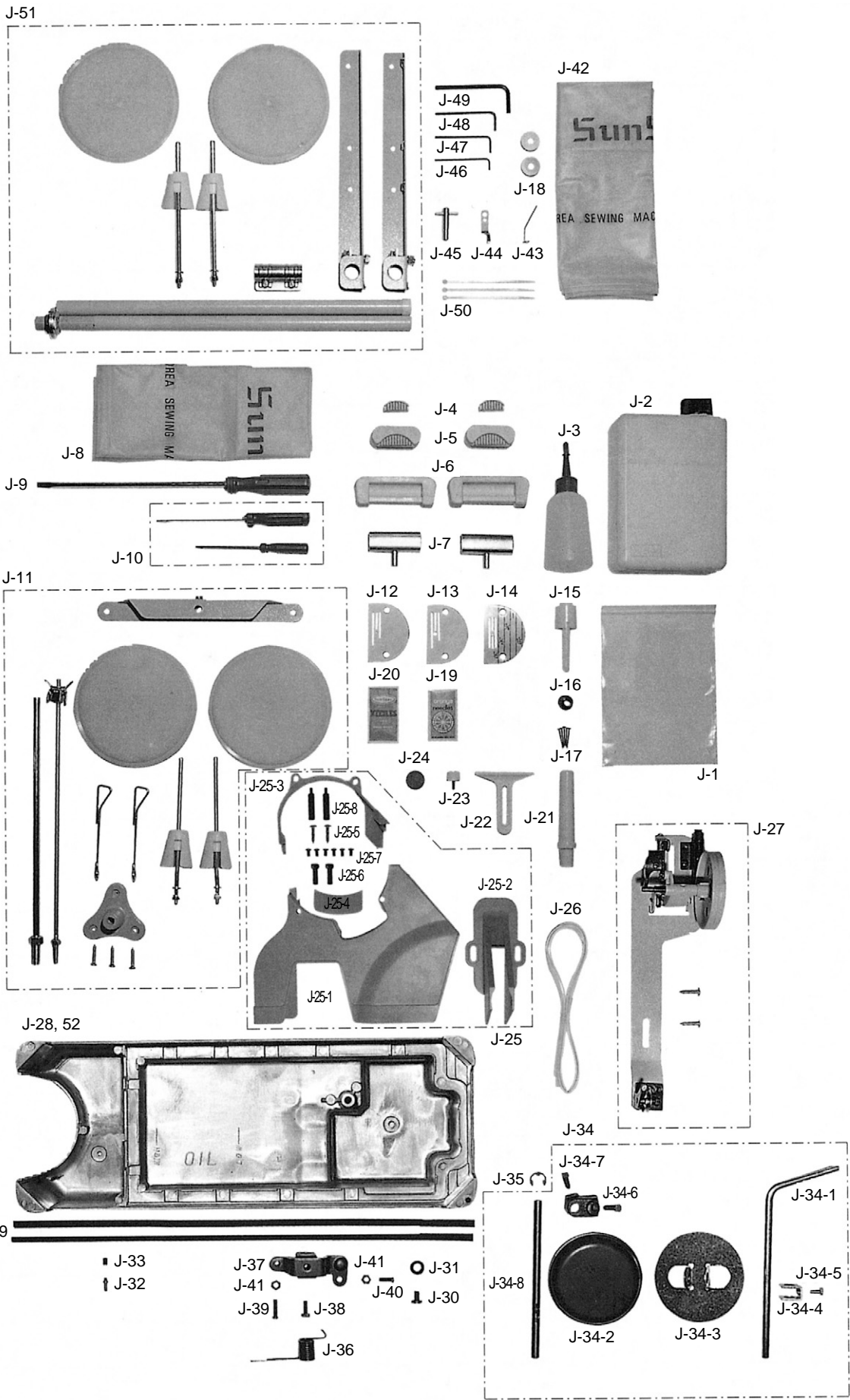




Ref. No.	Parts No.	Note	Name of Parts	품 명	Q' ty	Applied Period
J-1	91-001C-1230		Accessory Box	악세서리 박스	1	
J-2	GP-022449-00		Oil	오일 캔	1	
J-3	91-011C-1230		Oil Tank	유차	1	
J-4	01-213R-1230		Head Support Rubber "B"	힌지 고무(소)	2	
J-5	01-241R-1230		Head Support Subber "A"	힌지 고무(중)	2	
J-6	01-042R-1230		Rubber Cushion For Hinge	힌지 고무(대)	2	
J-7	01-043C-1230		Head Hinge	힌지	2	
J-8	91-106C-2700		Sewing Machine Cover	미싱커버(대)	1	
J-9	91-002C-1230		Driver(Large)	드라이버(대)	1	
J-10	91-103C-1230		Driver(Middle, Small)	드라이버(중, 소)	1	
J-11	CST-MF000100		Thread Stud Ass'y	실패꽃이(조)	1Set	
J-12	01-135A-123A		Needle Plate	침판	1	
J-13	01-135A-123B		Needle Plate	침판	1	
J-14	01-135A-235A		Needle Plate(AL-Type)	침판(박물용)	1	
J-15	43-010A-1600		Knee Base Rubber	무릎 올림봉 받침캡	1	
J-16	44-011R-2350		Cap	오일팬 누유 방지 고무	1	
J-17			Nail	못	10	
J-18	07-105A-2700		Bobbin	보빈	2	
J-19			Needle	바늘 A형	1	
J-20			Needle	바늘 B형	1	
J-21	GP-012352-00		Head Support Pole	미싱 받침대	1	
J-22	91-004C-1230		Cloth Guide	정규	1	
J-23	SC-0204-1230		Screw(9/64" n = 40)	홈볼이 바인딩 작은나사(9/64" n=40)	1	
J-24	44-010C-1230		Magnet	자석	1	
J-25	60-101A-2350		Belt Cover Ass'y(Only For Trimming M/C)	벨트커버(조)-사절	1Set	
J-25-1	GP-047394-00		Belt Cover(A)	벨트커버(A)	1	
J-25-2	60-002A-1230		Belt Cover(B)	벨트커버(B)	1	
J-25-3	GP-047500-00		Belt Cover(C)	벨트커버(C)	1	
J-25-4	60-004A-1230		Belt Cover(D)	벨트커버(D)	1	
J-25-5	91-002S-3400		Screw	목나사	2	
J-25-6	DSC-BF001200		Screw(11/64" n = 40)	가마잡이 나사(11/64" n = 40)	2	
J-25-7	DSC-BJ000200		Screw(11/64" n = 40)	홈볼이 둥근 작은나사(11/64" n = 40)	6	
J-25-8	60-005S-1230		Screw For Belt Cover	벨트커버 지지나사	2	
J-26	44-012C-1230		Oil Return Tube	환류 파이프	1	

**NOTE:**

A=KM-235A  
B=KM-235B



Ref. No.	Parts No.	Note	Name of Parts	품 명	Q' ty	Applied Period
J-27	AS-009197-00		Bobbin Winder Ass'y	실감기(조)	1	
J-28	44-012A-2500	A	Oil Pan	오일 팬	1	
J-29	44-003M-1230		Oil Pan Gasket	오일 팬 가스켓	2	
J-30	SC-0347-1230		Screw(M8×1.25)	배유구멍 마개 나사(M8×1.25)	1	
J-31	44-005R-1230		Packing	배유 구멍마개 나사 오링	1	
J-32	44-032C-1230		Oil Pan Nipple	오일 팬 니플	1	
J-33	SC-0509-1230		Screw(15/64" n = 28)	피드캠 쥘나사(15/64" n = 28)	1	
J-34	43-101A-1600		Knee Lifting Ass'y	무릎 올림(조)	1set	
J-34-1	43-101A-1600		Knee Lifter Shaft	무릎 받침축	1	
J-34-2	43-101A-1600		Knee Lifter Pad	무릎 받침 고무	1	
J-34-3	43-101A-1600		Knee Lifter Pad Insert Plate	무릎 받침 고무 잡이 판	1	
J-34-4	43-101A-1600		Holder	무릎 받침 고무 연결 링크	1	
J-34-5	43-101A-1600		Set Screw	무릎 받침 연결 링크 쥘나사	1	
J-34-6	43-101A-1600		Knee Lifter Arm Joint Complete	무릎 받침 연결 크랭크	1	
J-34-7	43-101A-1600		Screw(5/16" n = 18)	무릎 받침 축 고정나사(5/16" n = 18)	2	
J-34-8	43-101A-1600		Shaft	제어체 축	1	
J-35	PSR-AC000100		E-Ring(∅9)	제어체 축 링(E링 ∅9)	1	
J-36	43-008G-1600		Spring	제어체 스프링	1	
J-37	43-007A-1600		Knee Lifting Controller	제어체	1	
J-38	DSC-AA000300		Screw(15/64" n = 28)	포크 쥘나사	1	
J-39	SC-0545-1230		Screw(15/64" n = 28)	제어체 운동조절 나사(중) (15/64" n = 28)	1	
J-40	SC-0546-1230		Screw(15/64" n = 28)	제어체 운동조절 나사(대) (15/64" n = 28)	1	
J-41	DSN-AA000400		Nut(15/64" n = 28)	수평운동 룯드 단나사 너트(15/64" n = 28)	2	
J-42	91-106C-2700		Sewing Machine Cover	미싱커버(대)	1	
J-43	11-003C-2700		Wiper	와이퍼	1	
J-44	GP-044019-00		Fixed Mes	고정 메스	1	
J-45	91-105C-2700		Box Spanner	고정 메스 장력 조절용 스페너	1	
J-46	91-001C-2700		Wrench(2mm)	렌치(2mm)	1	
J-47	91-004C-2700		Wrench(2.5mm)	렌치(2.5mm)	1	
J-48	91-003C-2700		Wrench(3mm)	렌치(3mm)	1	
J-49	91-002C-2700		Wrench(5mm)	렌치(5mm)	1	
J-50	02-003A-2700		Nylon Clip	나일론 클립	4	
J-51	CST-MF000100		Thread Stud Ass'y	실패꽃이(조)	1Set	
J-52	GP-047580-00	B	Oil Pan	오일팬	1	Nov. 17. 09

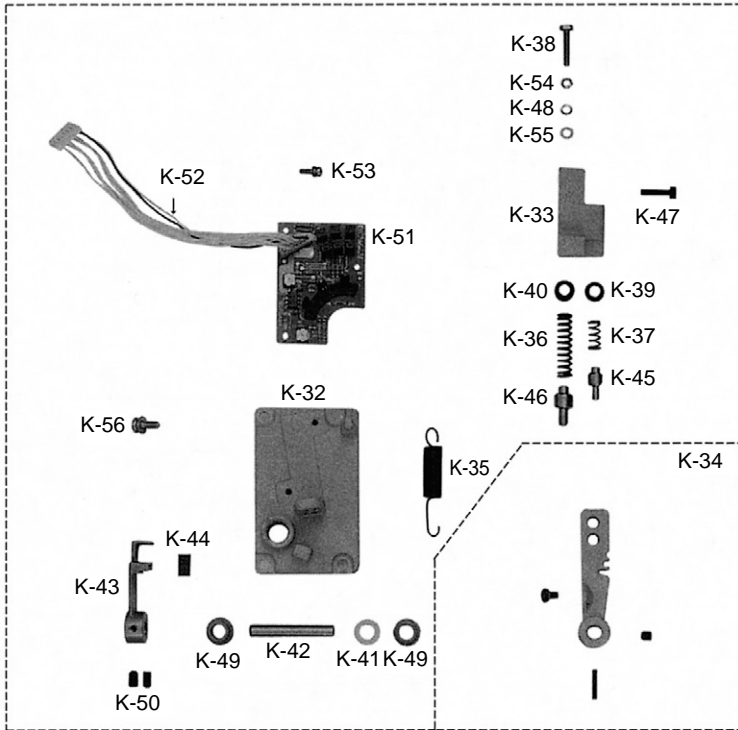
**NOTE:**

A=KM-235A  
B=KM-235B

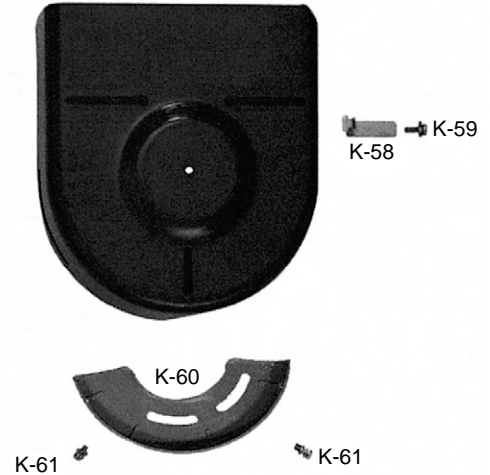
## Program Unit Box & Automatic Presser Foot Lifter

### 프로그램 유닛 박스 및 자동 무릎 올림 관계

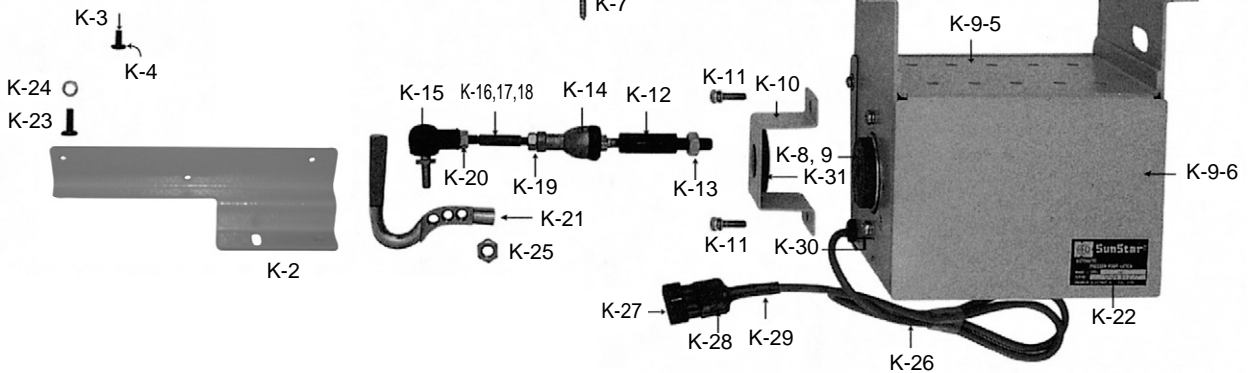
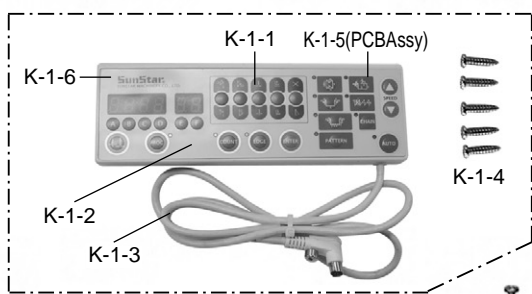
K-62



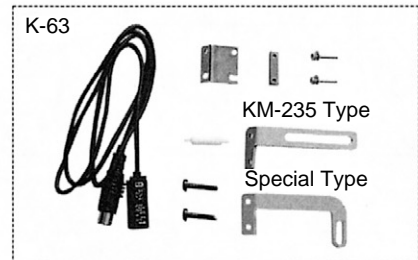
K-57



K-1



K-63



Ref. No.	Parts No.	Note	Name of Parts	품 명	Q' ty	Applied Period
K-1	EE-001523-00		S-5 P/U B/D Ass'y	S-5 P/U BOARD Ass'y	1Set	
K-1-1	1-36-01-020		Front cover	전면 커버	1	
K-1-2	GP-024747-00		Membrane Switch	멤브레인 스위치	1	
K-1-3	CA-000479-00		P/U Connector Cable(SE-013)	P/U 연결 케이블(SE-013)	1	
K-1-4	01-0365-1701		Screw For P/U Box	M3*16 플랜지 볼이 고정나사	5	
K-1-5	04-0000-SE55		P/U PCB Ass'y	P/U PCB Ass'y	1Set	
K-1-6	1-36-01-021		Rear cover	후면 커버	1	
K-2			Bracket For Program Unit Box(KM-235)	브라켓	1	
K-3			Screw For P/U Box	고정나사	1	
K-4			Screw For P/U Box(Special)	고정나사	1	
K-5			Auto Knee Lifter Solenoid Case	자동 무릎올림 솔레노이드 케이스	1	
K-6			Auto Knee Lifter Solenoid Cover	자동 무릎올림 솔레노이드 커버	1	
K-7			Screw For C-9 Bracket	고정나사	1	
K-8			Shaft(B) For Solenoid	축(A)	1	
K-9			Shaft(A) For Solenoid	축(B)	1	
K-10			Fixing Plate For Stroke	고정판	4	
K-11			Screw	고저나사	1	
K-12			Solenoid Shaft Connecting Rod.	연결로드	1	
K-13			Nut	너트	4	
K-14			Ball Joint(Right)	조인트(우)	1	
K-15			Ball Joint(Left)	조인트(좌)	1	
K-16			Middle Connecting Bar(KM-235)	중간 연결 바 (KM-235)	1	
K-17			Middle Connecting Bar(Special)	중간 연결 바 (Special)	1	
K-18			Middle Connecting Bar(KM-560-7)	중간 연결 바 (KM-560-7)	1	
K-19			Nut(R )	너트(우)	1	
K-20			Nut(L)	너트(좌)	1	
K-21			Knee Lifting Shaft	무릎올림 축	1	
K-22			Sticker For Auto Knee Lifting Sol.	스티커	1	
K-23			Screw For P/U Box Bracket	고정나사	2	
K-24			Spring Washer For P/U Box Bracket	스프링 와셔	2	
K-25			Nut	너트	1	
K-26			Cable For Auto Knee Lifting Solenoid	케이블	1	
K-27			Connector Pin	연결핀	2	
K-28			Plug For Auto Knee Lifting Solenoid	플러그	1	

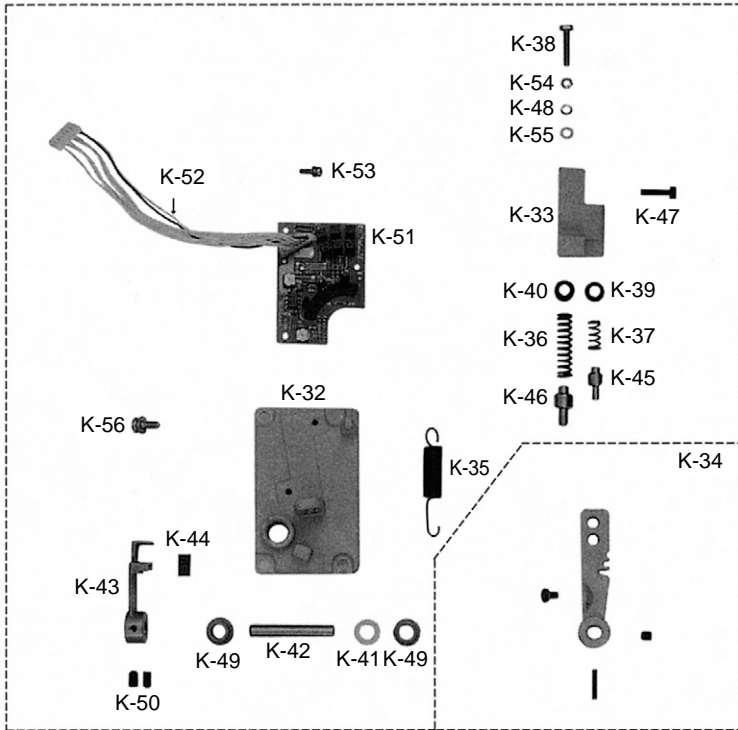
**NOTE:**

A=KM-235A  
B=KM-235B

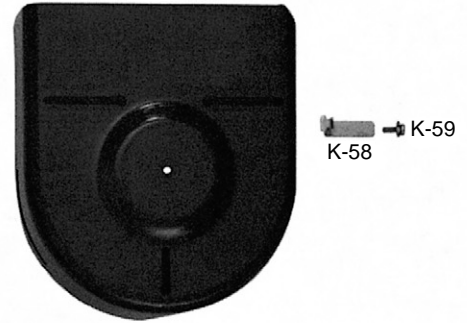
## Program Unit Box & Automatic Presser Foot Lifter

### 프로그램 유닛 박스 및 자동 무릎 올림 관계

K-62



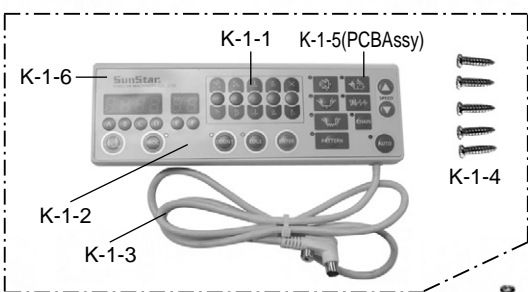
K-57



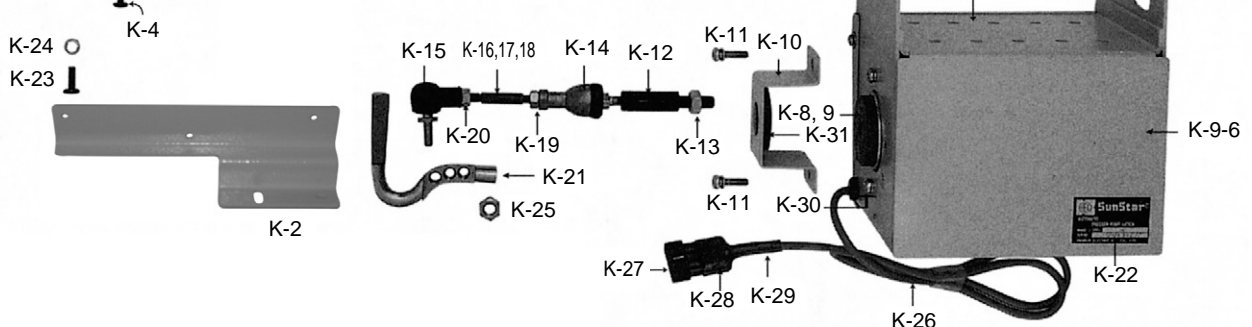
K-60



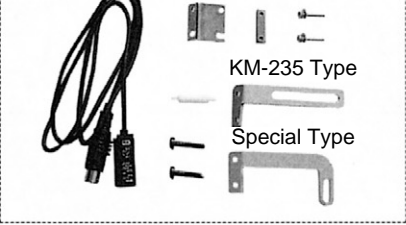
K-1



K-3, K-4, K-7



K-63



Ref. No.	Parts No.	Note	Name of Parts	품 명	Q' ty	Applied Period
K-29			Tube(C)	튜브( C )	1	
K-30			Guide Bushing For Cable	가이드 부싱	1	
K-31			Rubber Washer	고무와셔	1	
K-32			Pedal Base	페달 베이스	1	
K-33			Spring Housing	스프링 하우징	1	
K-34			Pedal Control Lever(Ass'y)	페달 레버 (조)	1Set	
K-35			Tension Spring For Pedal	장력 스프링	1	
K-36			Pressure Spring For Presser Foot	압력 스프링	1	
K-37			Pressure Spring For Thread Trimming	압력 스프링	1	
K-38			Pressure Control Screw For Thread Trimming	고정나사	1	
K-39			Spring Guide(A)	스프링 가이드(A)	1	
K-40			Spring Guide(B)	스프링 가이드(B)	1	
K-41			Parallel Washer For Pedal Shaft	와셔	1	
K-42			Shaft For Pedal Control Lever	축	1	
K-43			Pedal Magnet & Film Base	페달 자석 & 필름 베이스	1	
K-44			Pedal Magnet	페달 자석	1	
K-45			Stopper(A) For Pressure Spring	스토퍼(A)	1	
K-46			Stopper(B) For Pressure Spring	스토퍼(B)	1	
K-47			Screw For Spring Housing	고정나사	2	
K-48			Parallel Washer	와셔	1	
K-49			Bushing For Pedal Control Lever Shaft	붓싱	2	
K-50			Fixing Bolt For Pedal Magnet & Film Base	고정나사	2	
K-51			Pedal P.C.B Ass'y	페달 P.C.B(조)	1Set	
K-52			Connector for Pedal	컨넥터	1	
K-53			Screw For Pedal P.C.B	고정나사	3	
K-54			Fixing Nut	너트	1	
K-55			Fixing Spring Washer	스프링 와셔	1	
K-56			Screw For Pedal Base	고정나사	4	
K-57			Belt Cover(B)	벨트 커버(B)	1	
K-58			Belt Guide	벨트 가이드	1	
K-59			Screw For Belt Guide	고정나사	1	
K-60			Belt Cover(A)	벨트 커버( A )	1	
K-61			Screw For Belt Cover(A)	고정나사	2	
K-62			Pedal Unit Assembly	페달 유닛 (조)	1Set	
K-63			Edge Sensor	센서	1Set	

**NOTE:**

A=KM-235A  
B=KM-235B

# INDEX

Parts No.	Name of Parts	Page	Ref.No.
01-006R-2350	Robber Plug	7	A-26
01-007R-2350	Rubber Plug For Cable	7	A-31
01-008R-2350	Cushion Rubber	25	F-40
01-009R-2350	Cable Holder	7	A-48
01-009R-2700	Cable Holder(6N)	7	A-46
01-011A-2350	Top Cover	7	A-20
01-011C-2350	Cable Holder(5N)	7	A-44
01-013C-2350	Lever	25	F-49
01-014A-2350	Stopper	17	D-108
01-015A-2350	Cable Cover	7	A-42
01-015C-2350	Spring	25	F-53
01-016A-2350	Guide Bar For Thread	7	A-19
01-016C-1230	Bed Leg Front	7	A-37
01-016R-2700	Stopper Rubber	25	F-55
01-019C-1230	Oil Gauge Window	7	A-22
01-020W-2350	Spring Washer For Bracket	15	D-56
01-023S-1230	Screw For Top Cover	7	A-23
01-030C-1230	Thread Guide For Arm	5	A-11
01-031C-1230	Thread Guide Left	5	A-6
01-035P-1230	Machine Number Plate	7	A-29
01-035P-7400	Setting Pin	7	A-30
01-0365-1701	Screw For P/U Box	35	K-1-4
01-042R-1230	Rubber Cushion For Hinge	31	J-6
01-043C-1230	Head Hinge	31	J-7
01-105A-2350	Bed Leg Rear	25	F-52
01-107C-2350	Gasket	5	A-3
01-112C-2350	Gasket	7	A-21
01-112R-1230	Robber Plug(Small)	7	A-24
01-114C-2350	Holder	25	F-50
01-115C-1230	Bed Leg Right	7	A-38
01-135A-123A	Needle Plate	7	A-33
01-135A-123A	Needle Plate	31	J-12
01-135A-123B	Needle Plate	7	A-34
01-135A-123B	Needle Plate	31	J-13
01-135A-235A	Needle Plate (AL-Type)	7	A-35
01-135A-235A	Needle Plate(AL-Type)	31	J-14
01-144A-257A	Gauge Plate	7	A-52
01-144R-1230	Face Plate Rubber Cap(L)	5	A-4
01-213R-1230	Head Support Rubber "B"	31	J-4
01-241R-1230	Head Support Rubber "A"	31	J-5
01-434A-1230	Slide Plate Ass'y	7	A-32
02-003A-2700	Nylon Clip	25	F-57
02-003A-2700	Nylon Clip	29	I-13
02-003A-2700	Nylon Clip	33	J-50
02-016R-1230	O-Ring	9	B-4
02-018W-1230	Rubber	9	B-2
02-019W-1230	Felt Washer	19	E-20
02-020M-1230	Felt	9	B-3
02-028C-1230	Oil Seal	9	B-19
02-105W-1230	Thrust Washer	9	B-32
02-106A-1230	Main Shaft Gear	9	B-15
02-106A-1230	Lower Shaft Gear	11	C-13
02-106A-1230	Upright Shaft Upper Gear	11	C-20
02-106A-1230	Upright Shaft Lower Gear	11	C-22
02-125A-1230	Main Shaft Front Bushing	9	B-9
02-126A-1230	Main Shaft Center Bushing	9	B-11
02-207A-257A	Pulley	9	B-20
03-001A-1600	Upright Shaft	11	C-15
03-102A-1230	Vertical Shaft Upper Bushing	11	C-16
04-0000-SE55	P/U PCB Ass'y	35	K-1-5
04-001A-2700	Thread Guide	9	B-40

Parts No.	Name of Parts	Page	Ref.No.
04-003R-1600	Rubber Cap	9	B-44
04-005C-1230	Thread Guide "A"	9	B-39
04-108A-2350	Needle Bar Upper Bushing	9	B-36
04-109A-235A	Needle Bar Lower Bushing	9	B-38
05-002R-1230	Rubber Cap	19	E-3
05-003G-235A	Presser Regulation Spring	19	E-6
05-003G-235B	Presser Regulation Spring	19	E-7
05-007A-1370	Cam Shaft	19	E-19
05-007C-1230	Presser Regulator Bar	19	E-5
05-012A-1230	Hinged Foot Complete	19	E-11
05-103A-1370	Holder	19	E-13
05-109A-1600	Knee Lifter Plate	19	E-24
05-111A-1230	Bushing	19	E-2
06-008A-2350	Feed Rocker	13	D-8
06-020S-1230	Screw(3/16" n=32)	15	D-44
06-021R-1230	Rubber Flange	13	D-7
06-023C-257A	B/T Spring Holder	15	D-75
06-023G-257B	Reverse Feed Spring	15	D-77
06-023P-2350	Hinge Pin	13	D-34
06-024C-257A	Holder For Reverse Feed Spring	15	D-78
06-024G-1230	Spring	17	D-110
06-026A-257A	Feed Regulator Arm	17	D-96
06-027G-1230	Feed Regulator Dial Spring	17	D-91
06-028C-250B	Feed Regulating Dial-Insert Type	17	D-93
06-032S-257A	Stud Screw For Solenoid Crank	15	D-59
06-033A-2350	Reverse Feed Control Lever	17	D-105
06-034P-2350	Pin	17	D-97
06-035A-257A	Hinge Pin For Connecting Rod	15	D-64
06-037P-1230	Hinge Pin	15	D-48
06-040S-1600	Adjusting Screw	17	D-111
06-042R-1230	Packing	17	D-103
06-043R-1230	O-Ring	17	D-86
06-048A-2507	Reverse Feed Solenoid Ass'y	15	D-52
06-051R-1600	O-Ring	21	E-41
06-053W-1230	Corrugated Washer	17	D-104
06-055R-2350	Roller	17	D-98
06-101A-235A	Feed Cam(A)	15	D-67
06-101A-235B	Feed Cam(B)	15	D-68
06-103A-2500	Feed Rocker Shaft Connecting Rod	15	D-65
06-103C-235B	Stopper C-Ring	15	D-70
06-104A-257A	Feed Regulator Link	13	D-28
06-105A-2350	Feed Connecting Link(A)	13	D-25
06-106A-2350	Feed Connecting Link(B)	13	D-26
06-107A-123B	Feed Dog	13	D-17
06-107P-2350	Hinge Pin(A)	13	D-31
06-108P-2350	Hinge Pin(B)	13	D-29
06-109P-2350	Pin(B)	13	D-27
06-110P-2350	Pin(C)	13	D-32
06-112A-2350	Feed Roker Shaft	13	D-1
06-113A-2350	Bushing(Front)	13	D-2
06-114A-2350	Feed Bar Shaft	13	D-13
06-116A-2350	Feed Lifting Shaft	13	D-36
06-119S-1230	Screw(3/16" n=28)	13	D-22
06-119S-1230	Screw(3/16" n=28)	15	D-43
06-119S-1230	Screw(3/16" n=28)	15	D-47
06-122A-2500	Connecting Rod For Feed Regulator	15	D-74
06-125A-2500	Shaft	17	D-102
06-128A-2350	Feed Lifting Bell Arm	15	D-42
06-130A-257A	Bracket For Reverse Feed Solenoid	15	D-54
06-131A-257A	Reverse Feed Solenoid Crank	15	D-58
06-138A-235A	Rear Crank	15	D-45

Parts No.	Name of Parts	Page	Ref.No.
06-139A-1230	Front Bushing	13	D-37
06-140A-1230	Rear Bushing	13	D-5
06-140A-1230	Rear Bushing	13	D-40
06-141A-235B	Rear Crank	15	D-46
06-154A-1230	Crank Rod Complete	15	D-71
06-211A-2350	Feed Cam(C)	15	D-72
06-220A-2350	Collar	17	D-81
06-221A-2350	Feed Adjusting Shaft	15	D-80
06-311A-2350	Crank(Rear)	13	D-21
07-003A-270A	Rotary Hook Ass'y	11	C-24
07-003A-270B	Rotary Hook Ass'y	11	C-25
07-005M-1230	Felt	11	C-2
07-013A-1230	Hook Retainer	11	C-28
07-015G-1230	Spring	11	C-6
07-101A-2700	Lower Shaft Bushing(Center)	11	C-8
07-102A-2700	Lower Shaft Bushing(Front)	11	C-4
07-103A-2350	Lower Shaft	11	C-1
07-104A-2700	Bobbin Case Ass'y	11	C-27
07-105A-2700	Bobbin (A1)	11	C-26
07-105A-2700	Bobbin	31	J-18
08-010R-2350	Oil Protection Rubber	9	B-30
10-005A-2700	Thread Detachable Plate	23	F-5
10-009C-2700	Stopper C-Ring	23	F-10
10-011A-2700	Needle Bearing	23	F-13
10-013S-2700	Pivot Screw	23	F-17
10-021R-2700	Cushion Rubber (A)	25	F-39
10-022A-2700	Stopper Lever	23	F-28
10-023A-2700	Collar	25	F-30
10-024C-2700	Collar Shaft	25	F-31
10-026G-2700	Spring	23	F-27
10-027A-2700	Spring Guide	23	F-26
10-028G-2700	Spring	25	F-34
10-035A-2700	Operating Lever For Thread Release	21	E-50
10-036A-2700	Clutch Lever	25	F-44
10-037G-2700	Spring	25	F-46
10-038A-2700	Cam Driving Lever	21	E-51
10-041W-2700	Flat Washer	21	E-55
10-042C-2700	O-ring	17	D-89
10-042C-2700	O-Ring	21	E-56
10-043S-2700	Pivot Screw	25	F-47
10-044A-2700	Trimmer Solenoid Assembly	25	F-41
10-045A-2700	Solenoid Base	25	F-42
10-101A-2700	Fixed Mes	23	F-1
10-106A-235B	Rotary Mes	23	F-8
10-106A-2700	Rotary Mes	23	F-7
10-108A-2700	Holder	23	F-12
10-110W-2700	Washer	23	F-11
10-112A-2700	Connecting Link	23	F-14
10-113S-2700	Pivot Screw	23	F-15
10-115A-2700	Thread Trimmer Lever	23	F-18
10-116A-2700	Bushing	23	F-24
10-117A-2700	Thread Trimmer Shaft	23	F-23
10-118A-2700	Stopper	25	F-36
10-133A-2700	Reversal Cam	23	F-20
10-134A-2700	Pipe For Thread Release Lever	21	E-54
10-139A-2700	Collar	21	E-52
11-003C-2700	Wiper	27	H-1
11-003C-2700	Wiper	33	J-43
11-005A-2700	Wiper Crank	27	H-6
11-008A-2700	Crank Rotary Regulator Plate	27	H-11
11-009A-2350	Crank Rotary Plate	27	H-8



# INDEX

Parts No.	Name of Parts	Page	Ref.No.
11-010S-2350	Hinge Screw	27	H-12
11-012A-2700	Connecting Rod	27	H-14
11-013P-2700	Hinge Pin	27	H-9
11-015A-2700	Wiper Solenoid Assembly	27	H-15
11-018M-2350	Plug	15	D-63
11-019G-2700	Solenoid Tension Spring	27	H-16
11-019M-2350	Tube	15	D-62
11-020A-2500	Magnetic Holder	9	B-45-1
11-021S-2500	Screw For Magnetic Holder	9	B-45-3
11-022W-2500	Washer For Magnetic Holder	9	B-45-2
11-101A-2700	Holder	27	H-4
11-104A-2700	Wiper Rotary Shaft	27	H-2
11-114A-2700	Solenoid Bracket	27	H-17
11-121A-2700	Cover	27	H-22
12-001A-2350	Button Case	26	G-12
12-002C-2350	Cover	26	G-15
12-003A-2350	Reverse Button Ass'y	26	G-1
12-004A-2700	Reverse Selection Switch	26	G-19
12-004C-2350	Stopper Pin	23	F-29
12-005A-2350	Guide Bushing	26	G-4
12-005A-2700	Shaft	26	G-7
12-006C-2350	Nut	26	G-3
12-006S-2700	Support Screw	26	G-9
12-007C-2700	Nut	26	G-10
12-008C-2350	Pushing Plate	26	G-17
12-008G-2700	Spring	26	G-8
12-009C-2700	Reverse Selection Button	26	G-6
12-009R-2350	Insulated Rubber (A) For Switch	26	G-14
12-010R-2350	Insulated Rubber(B) For Switch	26	G-13
12-016M-2350	Earth Line	7	A-50
12-104A-2700	Reverse Selection Switch Ass'y	26	G-22
12-107A-2350	Reverse Button Switch	26	G-16
12-107A-2350	Reverse Selection Switch Ass'y	26	G-21
13-0000-SE55	Synchronizer Ass'y (Servo)	9	B-45-4
13-2000-SE55	Synchronizer Ass'y	9	B-45
1-36-01-020	Front cover	35	K-1-1
1-36-01-021	Rear cover	35	K-1-6
40-001A-2350	Thread Tension Release Plate	19	E-26
40-002C-1600	Stopper	19	E-30
40-003G-2350	Spring	19	E-27
40-004A-2350	Shaft	19	E-22
40-004C-2700	Nut(A)	21	E-48
40-005C-2700	Hinge Nut For Connecting Rod	15	D-60
40-005C-2700	Nut(B)	21	E-49
40-005W-2350	Washer	19	E-25
40-008R-1230	Packing	5	A-15
40-100A-2350	Safety Guide	21	E-59
40-101A-2700	Shaft	5	A-17-2
40-102A-2700	Tension Disk	5	A-17-3
40-103A-2700	Spring	5	A-17-4
40-104A-1230	Tension Barrel	5	A-14-1
40-104A-2700	Nut	7	A-17-5
40-105A-2700	Guide Plate	5	A-17-1
40-107C-2700	Cable Clip(A)	21	E-57
40-111G-1230	Check Spring	5	A-14-3
40-201A-2700	Supplementary Tension Ass'y	5	A-17
40-333G-123B	Tension Spring	5	A-14-8B
43-001A-2500	Presser Bar Lifter Lever	19	E-17
43-002G-2350	Connecting Rod	21	E-33
43-007A-1600	Knee Lifting Controller	33	J-37
43-008G-1600	Spring	33	J-36

Parts No.	Name of Parts	Page	Ref.No.
43-010A-1600	Knee Base Rubber	31	J-15
43-011C-2350	Knee Lifting Rod	21	E-43
43-013S-2350	Hinge Screw	21	E-44
43-014S-2350	Hinge Screw	21	E-40
43-016S-1600	Hinge Screw	21	E-37
43-017S-1600	Hinge Screw	21	E-34
43-101A-1600	Knee Lifting Ass'y	33	J-34
43-101A-1600	Knee Lifter Shaft	33	J-34-1
43-101A-1600	Knee Lifter Pad	33	J-34-2
43-101A-1600	Knee Lifter Pad Insert Plate	33	J-34-3
43-101A-1600	Holder	33	J-34-4
43-101A-1600	Set Screw	33	J-34-5
43-101A-1600	Knee Lifter Arm Joint Complete	33	J-34-6
43-101A-1600	Screw(5/16" n = 18)	33	J-34-7
43-101A-1600	Shaft	33	J-34-8
43-112A-2350	Knee Lifting Link	21	E-36
44-0000-1230	Oil Wick	15	D-50
44-002A-2350	Main Shaft Oil Pipe Ass'y	29	I-6
44-003M-1230	Oil Pan Gasket	33	J-29
44-005R-1230	Packing	33	J-31
44-009C-1230	Retainer Plate For Oil Wick	13	D-10
44-009C-1600	Nipple For Lower Shaft	29	I-1-5
44-010C-1230	Magnet	31	J-24
44-010C-1600	Nipple For Oil Return Pipe	29	I-1-4
44-011R-2350	Cap	31	J-16
44-012A-2350	Oil Pump Body	29	I-1-1
44-012A-2500	Oil Pan	33	J-28
44-012C-1230	Oil Return Tube	29	I-7
44-012C-1230	Oil Return Tube	31	J-26
44-016G-1230	Spring Joint	29	I-3
44-017C-1230	Retainer For Oil Tube	19	E-4
44-024C-1230	Oil Pump Cap	29	I-1-12
44-029M-1230	Holder For Oil Wick	15	D-51
44-032C-1230	Oil Pan Nipple	33	J-32
44-101A-2350	Oil Pump Bracket	29	I-1-17
44-104C-2350	Oil Pump Cover	29	I-1-11
44-105C-2350	Magnet Holder	29	I-1-13
44-115A-1230	Collar	29	I-4
44-117A-1600	Holder	29	I-9
44-118G-1230	Piston Spring	29	I-1-8
44-119A-1230	Collar For Impeller Shaft	29	I-1-15
44-119S-1230	Pin Screw	29	I-1-9
44-120A-1600	Oil Shield	29	I-11
44-120P-1230	Pin	29	I-1-10
44-120P-1230	Stopper Pin(2×8)	26	G-2
44-120S-1230	Screw(11/64" n = 40)	29	I-1-14
44-126A-1230	Impeller	29	I-1-6
44-150A-2350	Oil Pump Ass'y	29	I-1
60-002A-1230	Belt Cover(B)	31	J-25-2
60-004A-1230	Belt Cover(D)	31	J-25-4
60-005S-1230	Screw For Belt Cover	31	J-25-8
60-101A-2350	Belt Cover Ass'y(Only For Trimming M/C)	31	J-25
91-001C-1230	Accessory Box	31	J-1
91-001C-2700	Wrench(2mm)	33	J-46
91-002C-1230	Driver(Large)	31	J-9
91-002C-2700	Wrench(5mm)	33	J-49
91-002S-3400	Screw	31	J-25-5
91-003C-2700	Wrench(3mm)	33	J-48
91-004C-1230	Cloth Guide	31	J-22
91-004C-2700	Wrench(2.5mm)	33	J-47
91-011C-1230	Oil Tank	31	J-3

Parts No.	Name of Parts	Page	Ref.No.
91-103C-1230	Driver(Middle, Small)	31	J-10
91-105C-2700	Box Spanner	33	J-45
91-106C-2700	Sewing Machine Cover	31	J-8
91-106C-2700	Sewing Machine Cover	33	J-42
AS-000042-00	Wire Rope	21	E-46-1
AS-000042-00	Cable	21	E-46-2
AS-005778-00	Tension Adjusting Apparatus Ass'y	5	A-14
AS-005778-00	Tension Release Pin	5	A-14-2
AS-005778-00	Tension Stud	5	A-14-4
AS-005778-00	Set Screw	5	A-14-5
AS-005778-00	Tension Disk	5	A-14-6
AS-005778-00	Tension Release Washer	5	A-14-7
AS-005778-00	Tension Spring	5	A-14-8A
AS-005778-00	Ratchet	5	A-14-9
AS-005778-00	Cap	5	A-14-10
AS-008438-02	Dial Shaft Locker Ass'y	17	D-95
AS-009197-00	Bobbin Winder Ass'y	33	J-27
AS-015890-03	Arm, Bed Assembly	5	A-1
AS-015890-05	Arm, Bed Assembly	5	A-1
AS-016315-01	Take-Up Lever Complete	9	B-29
AS-016316-01	Take-Up Lever Complete	9	B-28
ATA-PS001303	Tension Adjusting Apparatus Ass'y	5	A-14
CA-000479-00	P/U Connector Cable(SE-013)	35	K-1-3
CA-005054-00	Reverse Selection Switch Ass'y	26	G-21
CPB-KB000100	Presser Bar	19	E-1
CST-MF000100	Thread Stud Ass'y	31	J-11
CST-MF000100	Thread Stud Ass'y	33	J-51
DBS-DA004100	Lower Shaft Rear Bushing	11	C-11
DCL-AA000100	Main Shaft Collar	9	B-13
DCL-AA001500	Collar(B)	11	C-9
DPK-CB000200	Rubber Plug	5	A-5
DPK-CB000200	Robber Plug(Large)	7	A-25
DPK-CB000200	Rubber Plug	7	A-51
DPN-AA000100	Pin(A)	13	D-23
DSC-AA000300	Screw(15/64" n = 28)	33	J-38
DSC-BA000100	Screw(9/64" n = 40)	5	A-7
DSC-BA000100	Screw(9/64" n = 40)	5	A-12
DSC-BA000100	Screw(9/64" n = 40)	27	H-23
DSC-BA000200	Screw(9/64" n = 40)	19	E-12
DSC-BA000300	Screw(11/64" n = 40)	29	I-12
DSC-BA000400	Screw(3/16" n = 28)	17	D-100
DSC-BA000700	Screw(3/16" n = 32)	21	E-58
DSC-BA000700	Screw(3/16" n = 32)	25	F-43
DSC-BA000700	Screw(3/16" n = 32)	27	H-13
DSC-BC000100	Screw(11/64" n = 40)	7	A-36
DSC-BC000100	Screw for Needle Plate	7	A-53
DSC-BF000100	Screw(1/8" n = 44)	9	B-41
DSC-BF000100	Screw(1/8" n = 44)	25	F-51
DSC-BF000400	Screw(15/64" n = 28)	13	D-15
DSC-BF000600	Screw(3/16" n = 28)	29	I-2
DSC-BF000700	Screw(15/64" n = 28)	23	F-19
DSC-BF000800	Screw(15/64" n = 40)	9	B-21
DSC-BF001000	Screw(11/64" n = 40)	17	D-84
DSC-BF001200	Screw(11/64" n = 40)	19	E-15
DSC-BF001200	Screw(11/64" n = 40)	31	J-25-6
DSC-BF001800	Screw(1/8" n = 44)	13	D-19
DSC-BF001800	Screw(1/8" n = 44)	27	H-3
DSC-BF001900	Screw(3/16" n = 28)	17	D-94
DSC-BJ000200	Screw(11/64" n = 40)	31	J-25-7
DSC-BJ000300	Screw(9/64" n = 40)	15	D-76
DSC-BJ000300	Screw(11/64" n = 40)	19	E-18

# INDEX

Parts No.	Name of Parts	Page	Ref.No.
DSC-BJ000300	Screw(9/64" n = 40)	29	I-1-3
DSC-BJ000400	Screw(11/64" n = 40)	5	A-8
DSC-BJ001400	Screw(9/64" n = 40)	19	E-16
DSC-CA000100	Screw(15/64" n = 28)	13	D-38
DSC-CA000100	Screw(15/64" n = 28)	15	D-41
DSC-CA000400	Screw(11/64" n = 40)	29	I-1-16
DSC-CA000400	Screw(11/64" n = 40)	29	I-5
DSC-CB000300	Screw(11/64" n = 40)	7	A-18
DSC-CB000300	Screw(11/64" n = 40)	11	C-10
DSC-CB000300	Screw(11/64" n = 40)	19	E-23
DSC-CB000500	Screw(15/64" n = 28)	23	F-22
DSC-CB000700	Screw(M5)	21	E-53
DSC-HA000100	Screw(9/16" n = 20)	19	E-8
DSN-AA000100	Nut	7	A-19-1
DSN-AA000400	Nut(15/64" n = 28)	33	J-41
DSN-AA000600	Nut(3/16" n = 32)	21	E-39
DSN-AA000600	Nut(3/16" n = 32)	21	E-45
DSN-AA000900	Nut(11/64" n = 40)	17	D-112
DSN-AA000900	Nut(11/64" n = 40)	23	F-16
DSN-CC000100	Presser Adjusting Nut	19	E-9
DWS-AA000500	Washer	21	E-31
DWS-AA000500	Washer	21	E-60
DWS-AA000600	Washer	25	F-38
DWS-AA000600	Washer	25	F-45
DWS-AA001500	Washer	13	D-14
DWS-AA003800	Washer	19	E-21
DWS-CA000100	Spring Washer	11	C-29
EE-001523-00	S-5 P/U B/D Ass'y	35	K-1
GP-008523-00	Shaft	17	D-85
GP-008525-02	Feed Regulating	17	D-83
GP-011202-00	Feed Dog	13	D-16
GP-011579-00	Main Shaft Rear Bushing	9	B-17
GP-011581-00	Upright Shaft Lower Bushing	11	C-18
GP-012352-00	Head Support Pole	31	J-21
GP-013150-00	Hinged Foot Complete	19	E-10
GP-016351-01	Spring	17	D-99
GP-018185-02	Reverse Solenoid Connecting Rod	15	D-61
GP-018342-00	Cover For Take Up Lever	5	A-9
GP-019000-00	Feed Dog(AL-Type)	13	D-18
GP-022094-00	Connecting Bolt	21	E-47
GP-022449-00	Oil	31	J-2
GP-023786-00	Thread Guide For Frame	19	E-14
GP-024747-00	Membrane Switch	35	K-1-2
GP-031537-01	Adjusting Valve For Lubrication	9	B-5
GP-031797-00	Sliding Block	9	B-33
GP-034932-02	Feed Bar	13	D-12
GP-035920-00	Bobbin Presser Bar	25	F-48
GP-037562-00	Piston	29	I-1-7
GP-037809-00	Dial Shaft Holder	17	D-95-1
GP-037810-00	Dial Shaft Holder Body	17	D-95-2
GP-037811-02	Dial Shaft Stopper	17	D-95-3
GP-037812-01	Dial Shaft Stopper Handle	17	D-95-4
GP-043871-00	Rubber Cap	13	D-4
GP-043871-00	Rubber Cap	13	D-39
GP-044019-00	Fixed Mes	33	J-44
GP-046682-02	Arm	5	A-1-1
GP-046682-05	Arm	5	A-1-1
GP-046683-02	Bed	5	A-1-2
GP-046684-02	Model Mark	7	A-27
GP-046685-02	Model Mark	7	A-28
GP-046686-00	Face Plate	5	A-2

Parts No.	Name of Parts	Page	Ref.No.
GP-046688-00	Lower Shaft Oil Pipe	29	I-8
GP-047346-01	Tension Release Cable	21	E-46
GP-047347-02	Counterweight	9	B-24
GP-047348-02	Counterweight	9	B-23
GP-047351-00	Feed Regulating Dial-Insert Type	17	D-92
GP-047394-00	Belt Cover(A)	31	J-25-1
GP-047500-00	Belt Cover(C)	31	J-25-3
GP-047518-00	Sliding Block and Shaft	13	D-20
GP-047580-00	Oil Pan	33	J-52
GP-047848-00	Stopper	19	E-30
GR-000026-01	Thread Trimmer Gear Assembly	23	F-21
GR-000027-00	Thread Trimmer Gear "B"	25	F-35
NB-000008-00	Needle Bar	9	B-34
NB-000009-00	Needle Bar	9	B-35
PL-000031-00	Pulley	9	B-20
PN-000602-01	Dial Pin	17	D-90
PN-000603-00	Spring Pin	17	D-95-5
PN-000789-01	Tension Release Pin	5	A-13
PN-000794-00	Dial Pin	17	D-90
PSC-AC000600	Screw(M6)	15	D-57
PSC-BA000100	Screw(M3×0.5)	27	H-20
PSN-AA000500	Nut(M8×1.25)	7	A-40
PSR-AC000100	E-Ring(Ø9)	33	J-35
PSR-AC000200	E-Ring	15	D-79
PSR-AC000200	E-Ring	19	E-29
PSR-AC000200	E-Ring	21	E-35
PSR-AC000200	E-Ring	21	E-38
PSR-AC000200	E-Ring	21	E-42
PSR-AC000300	Stop Ring	25	F-32
PSR-AC000300	Stop Ring	26	G-5
PSR-AC000400	E-Ring	27	H-10
PSR-AC000400	E-Ring	26	G-11
PSR-AC000500	E-Ring(Ø6)	25	F-54
PSR-AC000800	E-Ring	19	E-28
PWS-AA000500	Flat Washer	27	H-18
PWS-CA000100	Spring Washer	27	H-19
PWS-CA000200	Washer	29	I-1-2
PWS-CA000400	Spring Washer	7	A-39
SC-000550-00	Stud Screw For Connecting Rod	15	D-53
SC-000593-00	Set Screw	11	C-3
SC-001231-00	Screw(15/64" n = 28)	5	A-16
SC-001231-00	Screw(15/64" n = 28)	9	B-18
SC-001231-00	Screw(15/34" n = 28)	11	C-5
SC-001231-00	Screw(15/64" n = 28)	13	D-6
SC-001794-00	Screw(9/64" n = 40)	21	E-32
SC-0110-1230	Screw(15/64" n = 28)	9	B-37
SC-0123-1230	Screw(9/32" n = 28)	9	B-27
SC-0129-7400	Screw(1/4" n = 40)	11	C-21
SC-0129-7400	Screw(1/4" n = 40)	11	C-23
SC-0129-7400	Screw(1/4" n = 40)	15	D-69
SC-0133-1230	Screw(1/8" n = 44)	13	D-11
SC-0137-2700	Screw(1/8" n = 40)	23	F-3
SC-0166-2350	Screw(M5×0.8)	15	D-55
SC-0174-1230	Screw(11/64" n = 40)	5	A-10
SC-0174-1230	Screw(11/64" n = 40)	11	C-30
SC-0174-1230	Screw(11/64" n = 40)	17	D-101
SC-0174-1230	Screw(11/64" n = 40)	27	H-5
SC-0175-1230	Screw(11/64" n = 40)	13	D-3
SC-0175-1230	Screw(11/64" n = 40)	13	D-33
SC-0175-1230	Screw(11/64" n = 40)	13	D-35
SC-0175-1230	Screw(11/64" n = 40)	15	D-49

Parts No.	Name of Parts	Page	Ref.No.
SC-0175-1230	Screw(11/64" n = 40)	27	H-21
SC-0175-1230	Screw(11/64" n = 40)	29	I-10
SC-0185-1230	Screw(3/16" n = 32)	17	D-107
SC-0186-1230	Screw(3/16" n = 32)	17	D-106
SC-0188-1230	Screw(5/16" n = 28)	9	B-22
SC-0190-2700	Screw(3/16" n = 32)	25	F-37
SC-0199-2700	Screw(11/64" n = 40)	7	A-43
SC-0199-2700	Screw(11/64" n = 40)	17	D-109
SC-0199-2700	Screw(11/64" n = 40)	23	F-6
SC-0204-1230	Screw(9/64" n = 40)	31	J-23
SC-0222-1230	Screw	5	A-1-3
SC-0225-2350	Screw	5	A-1-4
SC-0226-1230	Screw	5	A-1-5
SC-0307-1230	Screw(3/16" n = 32)	13	D-9
SC-0324-2700	Screw(1/4" n = 40)	25	F-33
SC-0336-2350	Screw(1/8" n = 44)	26	G-18
SC-0337-2350	Screw(M2×0.4)	26	G-20
SC-0346-2350	Screw(M8×1.25)	7	A-41
SC-0347-1230	Screw(M8×1.25)	33	J-30
SC-0361-1230	Screw(3/16" n = 32)	11	C-7
SC-0365-3710	Screw(9/64" n = 40)	7	A-45
SC-0365-3710	Screw(9/64" n = 40)	7	A-47
SC-0365-3710	Screw(9/64" n = 40)	7	A-49
SC-0496-3710	Screw(11/64" n = 40)	13	D-24
SC-0496-3710	Screw(11/64" n = 40)	15	D-66
SC-0504-1230	Screw(1/4" n = 40)	9	B-26
SC-0504-1230	Screw(1/4" n = 40)	13	D-30
SC-0504-1230	Screw(1/4" n = 40)	15	D-73
SC-0506-1600	Screw(9/64" n = 40)	21	E-32
SC-0507-1230	Screw(15/64" n = 28)	9	B-10
SC-0507-1230	Screw(15/64" n = 28)	9	B-12
SC-0507-1230	Screw(15/64" n = 28)	9	B-31
SC-0507-1230	Screw(15/64" n = 28)	11	C-12
SC-0507-1230	Screw(15/64" n = 28)	11	C-17
SC-0507-1230	Screw(15/64" n = 28)	11	C-19
SC-0507-1230	Screw(15/64" n = 28)	17	D-87
SC-0507-1230	Screw(15/64" n = 28)	23	F-25
SC-0508-1230	Screw(15/64" n = 28)	25	F-56
SC-0509-1230	Screw(15/64" n = 28)	33	J-33
SC-0545-1230	Screw(15/64" n = 28)	33	J-39
SC-0546-1230	Screw(15/64" n = 28)	33	J-40
SC-A104-4517	Screw(11/64-40-5)	27	H-7
SC-A129-4515	Screw(1/4" n = 40)	9	B-14
SC-A129-4515	Screw(1/4" n = 40)	9	B-16
SC-A129-4515	Screw(1/4" n = 40)	9	B-25
SC-A129-4515	Screw(1/4" n = 40)	11	C-14
SC-A129-4515	Screw(1/4" n = 40)	17	D-82
SC-A154-4114	Screw(11/64" n = 40)	23	F-9
SC-A301-4119	Screw(9/64" n = 40)	23	F-2
SN-0103-2700	Nut(1/8" n = 40)	23	F-4
ST-000164-01	Main Shaft	9	B-1
ST-000165-01	Feed Regulator Dial Shaft	17	D-88
	Mark	7	A-54
	Needle	9	B-42
	Needle	9	B-43
	Nail	31	J-17
	Needle	31	J-19
	Needle	31	J-20
	Bracket For Program Unit Box(KM-25)	35	K-2
	Screw For P/U Box	35	K-3
	Screw For P/U Box(Special)	35	K-4

# INDEX

Parts No.	Name of Parts	Page	Ref.No.	Parts No.	Name of Parts	Page	Ref.No.	Parts No.	Name of Parts	Page	Ref.No.
	Auto Knee Lifter Solenoid Case	35	K-5								
	Auto Knee Lifter Solenoid Cover	35	K-6								
	Screw For C-9 Bracket	35	K-7								
	Shaft(B) For Solenoid	35	K-8								
	Shaft(A) For Solenoid	35	K-9								
	Fixing Plate For Stroke	35	K-10								
	Screw	35	K-11								
	Solenoid Shaft Connecting Rod.	35	K-12								
	Nut	35	K-13								
	Ball Joint(Right)	35	K-14								
	Ball Joint(Left)	35	K-15								
	Middle Connecting Bar(KM-235)	35	K-16								
	Middle Connecting Bar(Special)	35	K-17								
	Middle Connecting Bar(KM-500-7)	35	K-18								
	Nut(R )	35	K-19								
	Nut(L)	35	K-20								
	Knee Lifting Shaft	35	K-21								
	Sticker For Auto Knee Lifting Sol.	35	K-22								
	Screw For P/U Box Bracket	35	K-23								
	Spring Washer For P/U Box Bracket	35	K-24								
	Nut	35	K-25								
	Cable For Auto Knee Lifting Solenoid	35	K-26								
	Connector Pin	35	K-27								
	Plug For Auto Knee Lifting Solenoid	35	K-28								
	Tube(C)	37	K-29								
	Guide Bushing For Cable	37	K-30								
	Rubber Washer	37	K-31								
	Pedal Base	37	K-32								
	Spring Housing	37	K-33								
	Pedal Control Lever(Ass'y)	37	K-34								
	Tension Spring For Pedal	37	K-35								
	Pressure Spring For Presser Foot	37	K-36								
	Pressure Spring For Thread Trimming	37	K-37								
	Pressure Control Screw For Thread Trimming	37	K-38								
	Spring Guide(A)	37	K-39								
	Spring Guide(B)	37	K-40								
	Parallel Washer For Pedal Shaft	37	K-41								
	Shaft For Pedal Control Lever	37	K-42								
	Pedal Magnet & Film Base	37	K-43								
	Pedal Magnet	37	K-44								
	Stopper(A) For Pressure Spring	37	K-45								
	Stopper(B) For Pressure Spring	37	K-46								
	Screw For Spring Housing	37	K-47								
	Parallel Washer	37	K-48								
	Bushing For Pedal Control Lever Shaft	37	K-49								
	Fixing Bolt For Pedal Magnet & Film Base	37	K-50								
	Pedal P.C.B Ass'y	37	K-51								
	Connector for Pedal	37	K-52								
	Screw For Pedal P.C.B	37	K-53								
	Fixing Nut	37	K-54								
	Fixing Spring Washer	37	K-55								
	Screw For Pedal Base	37	K-56								
	Belt Cover(B)	37	K-57								
	Belt Guide	37	K-58								
	Screw For Belt Guide	37	K-59								
	Belt Cover(A)	37	K-60								
	Screw For Belt Cover(A)	37	K-61								
	Pedal Unit Assembly	37	K-62								
	Edge Sensor	37	K-63								

---

**MEMO**





# MEMO

A large, empty rectangular box with rounded corners, intended for writing a memo. The box is defined by a thin black border and occupies the majority of the page's vertical space below the "MEMO" header.

---

**MEMO**





# MEMO

A large, empty rectangular box with rounded corners, intended for writing a memo. The box is defined by a thin black border and occupies the majority of the page's vertical space below the "MEMO" header.