



PARTS BOOK

KM-2070 Series

전자제어식 고속 1분침 본봉
지그재그 재봉기

Electronically Controlled
1-Needle Zigzag Lock Stitch
Machine

PME-091118

Information

A. Parts Book 구성

Structure of Part Book

① **A** Arm, Bed & Machine Body Mechanism
팔, 침대 및 의장품 관계

②

③

④

⑤

⑥

⑦

⑧

⑨

Ref. No.	Parts No.	Note	Name of Parts	품명	Q'ty	Assembly No.
A-1	01-0194(-03)		Arm	어ーム	1	
A-2	01-0073(-06)		Bed	침대	1	
A-4	01-0070(-00)		Face Plate	면판	1	
A-5	01-0044(-10H)		Face Plate Gasket	면판 가스켓	1	
A-6	01-0174(-4122)		Screw(L) (#4 *mm)	볼트	10	
A-7	01-1101(-1230)		Rubber Cap For Face Plate	면판 고무캡	2	
A-9	01-0019(-1200)		Caution S/Screw	경고 스크류	1	
A-8	01-0197(-00)		Warning Label Cover	경고 라벨 커버	1	
A-10	01-0203(-04 *mm)		Screw(S) (#4 *mm)	볼트 (#4 *mm)	1	
A-11	01-0174(-00)		Bed Cover(L)	침대 커버(좌)	1	
A-12	01-0144(-102H)		Bed Cover (Gasket,L)	침대 커버 가스켓(좌)	1	
A-13	01-0243(-1000)		Screw(L) (#4 *mm)	볼트 (#4 *mm)	14	
A-13-1	45-0244(-1000)		Washer	와셔	2	
A-14	01-0170(-00)		Bed Cover(S)	침대 커버(중)	1	
A-15	01-0174(-102H)		Bed Cover (Gasket(S))	침대 커버 가스켓(중)	1	
A-16	440211(-100H)		Tank Rubber Cap	탱크 고무캡	1	
A-17	01-0074(-1230)		Thread (Slide with Three Poles)	세우름 슬라이드(3극)	15Set	
A-19	01-0100(-1000)		Thread (Slide(L))	면판 슬라이드(좌)	1	
A-20	01-0100(-1000)		Thread (Slide(R))	면판 슬라이드(우)	3	
A-21	01-0100(-1230)		Thread (Slide(S))	면판 슬라이드(중)	1	
A-22	01-0164(-00)		Arm Thread Guide Assy	어ーム 슬라이드 가이드(조)	1	
A-23	11-0170(-7000)		Nut	너트	1	
A-24	01-0203(-102H)		Thread (Slide(S))	면판 슬라이드(중)	1	
A-25	010203(-100H)		Thread (Slide(S))	면판 슬라이드(중)	15Set	
A-26	010203(-100H)		Silicon Tank	실리콘 탱크	1	
A-27	010203(-100H)		Silicon Oil Window	실리콘 유량 창	1	
A-28	010240(-100H)		Silicon Part	실리콘 부품	1	
A-29	01-0195(-00)		Part for Silicon Oil Supply	실리콘 기름 공급 부품	1	
A-30	01-0195(-00)		Screw(L) (#4 *mm)	볼트 (#4 *mm)	1	
A-31	04-0243(-1230)		Arm Upper Part Rubber Cap	어ーム 상부 고무 캡	2	
A-33	04-0203(-100H)		Needle Bar Rubber Cap	바늘봉 고무 캡	4	
A-34	01-0420(-442L)		Rubber Cap(L)	고무캡(좌)	4	
A-35	44-0211(-7400)		Rubber Cap(S)	고무캡(중)	7	
A-36	01-0170(-100H)		Bed Rubber	침대 고무	1	
A-37	01-0191(-00)		Welder (Sticker(M))	인쇄 스티커-중형	1	
A-38	01-0191(-00)		M Welder (Sticker(S))	인쇄 스티커-대형	1	
A-39	01-0190(-00)		L Welder (Sticker(L))	인쇄 스티커-대형	1	
A-40	01-0190(-00)		K Welder (Sticker(K))	인쇄 스티커-대형	1	
A-41	01-0210(-100H)		Tap Cover	타프 커버	2	
A-42	01-0214(-100H)		Tap Cover	타프 커버	1	
A-43	41-014(-100H)		Silobin Winder Assy	실라빈(조)	15Set	
A-44	41-0201(-100H)		Silobin Winder (Base Assy)	실라빈 베이스(조)	1	
A-45	41-0204(-100H)		Silobin Winder (Shaft)	실라빈 샤프트	1	
A-46	01-0201(-00)	S. Color	Sticker(S)	인쇄 스티커-대형	1	
A-47	01-0190(-7000)		Screw(S)	볼트	1	
A-48	41-0201(-100H)		Silobin Winder	실라빈	1	
A-49	01-0104(-500T)		Screw(L) (#4 *mm)	볼트 (#4 *mm)	2	
A-50	41-0201(-100H)		Silobin Winder Action Ring	실라빈 작동 링	1	
A-51	41-0201(-100H)		Silobin Winder (Rubber Ring)	실라빈 고무링	1	
A-52	41-0201(-100H)		Silobin Winder (Shaft)	실라빈 샤프트	1	
A-53	41-0211(-100H)		Silobin Winder Adjusting Plate	실라빈 조정판	1	
A-54	01-0100(-1230)		Screw(L) (#4 *mm)	볼트 (#4 *mm)	1	
A-55	01-0174(-1000)		Washer	와셔	1	
A-56	41-0211(-100H)		Silobin Winder (Shaft)	실라빈 샤프트	1	
A-57	41-0211(-100H)		Silobin Winder Adjusting Term	실라빈 조정판	1	
A-58	010211(-04113)		Screw(L) (#4 *mm)	볼트 (#4 *mm)	1	

Note: P=Heavy Material(중형재), M=Medium Material(중형재), N=Plastic Heavy Material(대형재 후판재)
L=Light Material(대형재), K=Roll Material(롤재), EL=Large Shutter Piece(대 셔터 폭재)

①: 관계 별 고유 코드

Unique code by mechanism

②: 관계 별 고유 명칭

Unique name by mechanism

③: 관계도

Explode view

④ Ref.No.: 파트별 고유 식별 번호

Unique identification number by part

⑤ Parts No.: 고유 제품 코드

Unique Product code

Ex)

구분 Category	Code	비고 remarks
구 부품 Old part	01-030C-1230	
신 부품 New Part	AS-000000-00	조(組) 파트 Set parts
	GP-000000-00	기구적 파트 Instrumental parts
	EP-000000-00	전기적 파트 Electrical parts

⑥ Note: 공지사항 표기 및 메모

Refers to notice and memo

⑦ 품

명: 파트의 고유 품명

Name of Part: Unique name of parts

⑧ Q'ty : 파트의 수량

The number of parts

⑨ Assembly no.: 조(組) 파트의 식별 번호

Unique identification number by set part

Warning

1. 조에 속한 파트는 개별 조립 시 제품의 파손 또는 재봉 불량일 수 있어 해당 파트에 대한 주문 시에는 조 품목으로만 구입이 가능합니다.
2. 본 책자는 Parts Book으로 제작되었으므로 매뉴얼로 사용 불가합니다.
3. 사전 예고 없이 사양이 변경 될 수도 있습니다.

1. The parts classified as ass'y items may cause damage to the machine or bad sewing when they are separately assembled. Hence, when they are ordered, they can be purchased as ass'y items only.
2. This is a parts book. It cannot be used as a manual.
3. Parts are Subject to change in Design Without Prior Notice.

Model

For Foundation Stitch

- KM-2070-L
Electronically Controlled 1-Needle Zigzag Lock Stitch Machine
전자제어식 고속 1본침 지그재그 재봉기
- KM-2070-7L
Electronically Controlled 1-Needle Zigzag Lock Stitch Machine
With an automatic Thread Trimmer
전자제어식 고속 1본침 지그재그 자동 사절 재봉기

For Long Stitch

- KM-2070-M
Electronically Controlled 1-Needle Zigzag Lock Stitch Machine
전자제어식 고속 1본침 지그재그 재봉기
- KM-2070-7M
Electronically Controlled 1-Needle Zigzag Lock Stitch Machine
with an automatic Thread Trimmer
전자제어식 고속 1본침 지그재그 자동 사절 재봉기

CONTENTS

목 차

I. Machine Part 기구 파트

A	Arm, Bed & Machine Body Mechanism 암, 베드 및 외장품 관계	6
B	Upper Shaft Mechanism 상축 관계	8
C	Presser Foot & Knee Lifting Mechanism 누름대 무릎올림 관계	10
D	Feed Mechanism 피이드 관계	12
E	Lower Shaft Mechanism 하축 관계	16
F	Needle Bar Rocking Mechanism 바늘대 요동 관계	18
G	Thread Release & Thread Tension Mechanism 실늦추기 및 실 장력 조절 관계	20
H	Wiper Mechanism 와이퍼 관계	22
I	Thread Trimming Mechanism 사절 관계	24
J	Reverse Button Mechanism 역진 버튼 관계	26
K	Lubrication Mechanism 급유 관계	28
L	Reverse Feed Mechanism 역진 관계	30
M	Auto Presser Lifting Solenoid Mechanism (Option) 자동 무릎올림 관계 (선택사양)	32
N	Accessories Mechanism 액세서리 관계	34
R	Pedal Mechanism 페달 관계	42

II. Control Part 전기 파트

O	Control Box Mechanism 컨트롤 박스 관계	36
P	Operation Unit Mechanism 오퍼레이션 유니트 관계	38

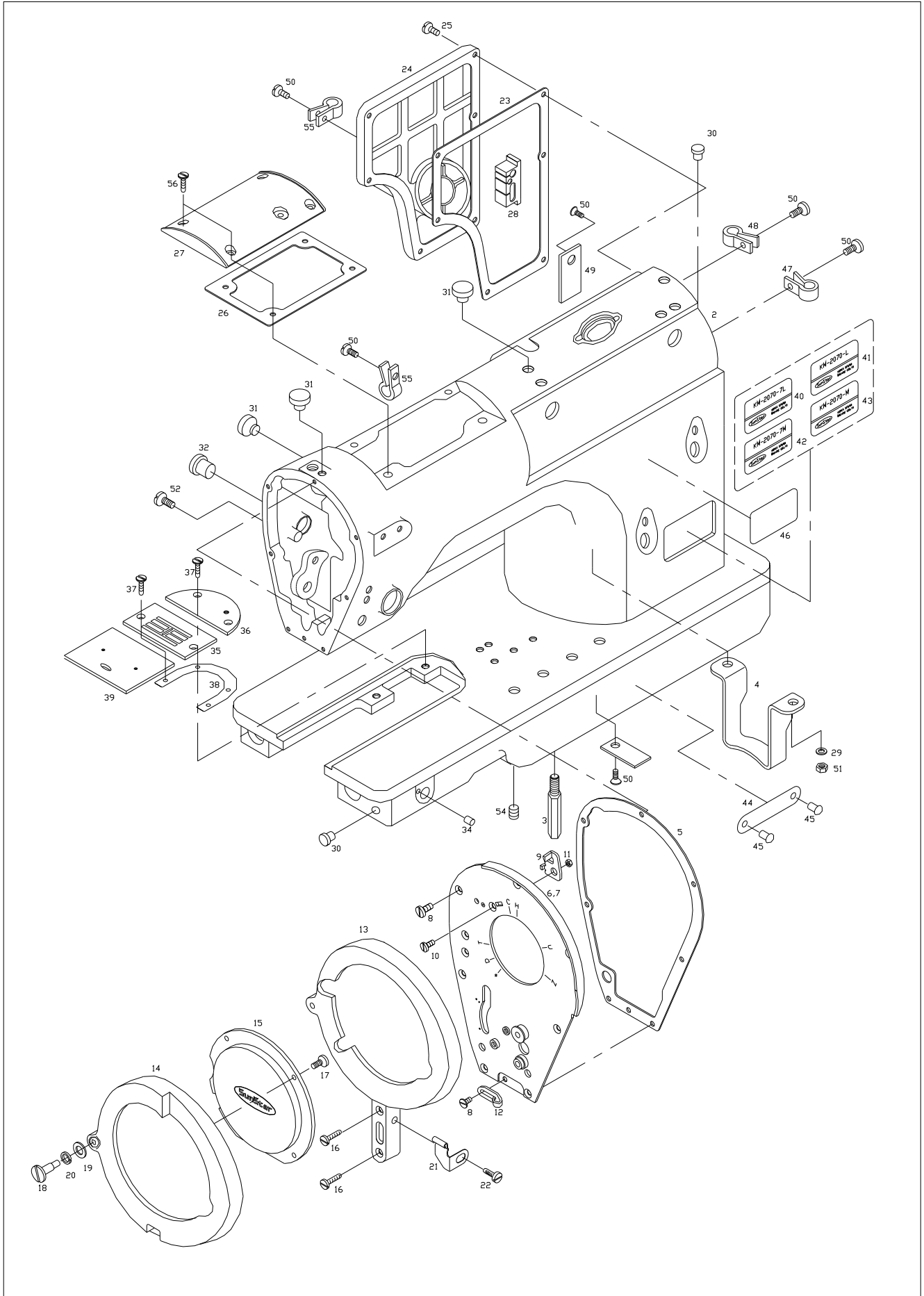
III. Option Part 옵션 파트

Q	Gauge Parts 게이지 관계	40
	Index 인덱스	44

A

Machine Body Mechanism

외장 관계





Ref. No.	Parts No.	Note	Name of Parts	품명	Q'ty				Assembly No.
					7L	L	7M	M	
A-2	01-001A-2070		Arm·Bed	아암·베드	1Set	1	1	1	
A-2	AS-015124-00	Apr.09	Arm·Bed	아암·베드	1Set	1	1	1	
A-3	01-005A-2070		Bed Base (F)	베드 다리 (前)	2	2	2	2	
A-4	01-005B-2070		Bed Base (R)	베드 다리 (後)	1	1	1	1	
A-5	GP-020944-00		Face Plate	면판	1	·	1	·	
A-6	01-005M-2070		Face Plate Gasket	면판 가스켓	1	1	1	1	
A-7	01-007A-2070		Face Plate	면판	·	1	·	1	
A-8	01-008S-2070		Screw (9/64"n=40, l=8)	집나사	8	8	8	8	
A-9	01-009A-2070		Face Plate Mes	면판 메스	1	1	1	1	
A-10	01-008S-2070		Screw (9/64"n=40, l=8)	집나사	1	1	1	1	
A-11	11-017S-7500		Nut (9/64"n=40)	너트	1	1	1	1	
A-12	01-026A-3800		Face Plate Thread Guide	면판 실안내	1	1	1	1	
A-13	GP-013301-00		Face Plate Guard	면판 가드	1	1	1	1	
A-14	01-015C-2070		Face Plate Guard Cover	면판 가드 커버	1	1	1	1	
A-15	01-016C-2070		Cover Window	커버창	1	1	1	1	
A-16	SC-0179-3710		Screw (11/64"n=40)	윗뚜껑 집나사	2	2	2	2	
A-17	SC-A131-4522		Screw (1/8"n=44)	홈 볼이 납작 작은 나사	4	4	4	4	
A-18	01-019S-2070		Stud Screw for A-14	단나사	1	1	1	1	
A-19	40-007W-1600		Washer	와셔	1	1	1	1	
A-20	01-021W-2070		Wave Washer	파형 와셔	4	4	4	4	
A-21	01-022C-2070		Face Plate Guard Cover Stopper	면판 가드 커버 스톱퍼	1	1	1	1	
A-22	SC-0365-3710		Screw (9/64" n=40, l=5.5)	면판 측면 커버나사(하)	1	1	1	1	
A-23	01-024M-207P		Rear Cover Gasket	후면 커버 가스켓	1	1	1	1	
A-24	01-025C-2070		Rear Cover	후면 커버	1	1	1	1	
A-25	SC-0498-3710		Screw (11/64"n=40)	가마잡이 나사	6	6	6	6	
A-26	01-027M-2070		Top Cover Gasket	윗뚜껑 가스켓	1	1	1	1	
A-27	01-028A-2070		Top Cover	윗뚜껑	1	1	1	1	
A-28	01-030R-2070		Cable Holder Rubber	케이블 잡이 고무	1	1	1	1	
A-29	01-038W-1230		Spring Washer	스프링 와셔	2	2	2	2	
A-30	04-104R-1230		Rubber Cap for Arm Rear Part(S)	ARM후면부 고무마개 (小)	2	2	2	2	
A-31	44-021R-7400		Rubber Cap for Arm Upper Part	Arm 상부 고무마개	5	6	5	6	
A-32	01-042R-640L		Rubber Cap for Arm Rear Part (L)	Arm 후면부 고무마개(大)	1	1	1	1	
A-34	44-018R-7500		Rubber Cap for Bed (S)	Bed 고무마개 (小)	1	1	1	1	
A-35	01-437A-2070		Needle Plate(8mm)	침판 (8mm)	1	1	1	1	
A-36	01-038A-2070		Auxiliary Plate	보조 침판	1	1	1	1	
A-37	SC-0505-3710		Screw (9/64"n=40, l=7)	면판 측면 커버나사(상)	4	4	4	4	
A-38	01-040A-2077		Needle Plate Spacer	침판 Spacer	1	·	1	·	
A-39	01-041A-2070		Slide Plate	미끄럼판	·	1	·	1	
A-40	GP-009241-00		Model Sticker (7L)	모델마크 (7L)	1	·	·	·	
A-41	GP-009246-00		Model Sticker (L)	모델마크 (L)	·	1	·	·	
A-42	GP-009261-00		Model Sticker (7M)	모델마크 (7M)	·	·	1	·	
A-43	GP-009262-00		Model Sticker (M)	모델마크 (M)	·	·	·	1	
A-44	01-035P-1370		Machine Number Plate	기번판 (베드)	1	1	1	1	
A-45	01-035P-7400		Pin for A-44	기번판 고정핀	2	2	2	2	
A-46	91-001M-120D		Caution Sticker	경고 스티커	1	1	1	1	
A-47	01-011C-2350		Cable Holder (5N)	케이블 잡이 (5N)	1	1	1	1	
A-48	01-009R-2700		Cable Holder (6N)	케이블 잡이 (6N)	1	1	1	1	
A-49	15-036G-2070		Plate Spring	판 스프링	1	1	1	1	
A-50	SC-0543-2302		Screw (11/64"n=40)	틈 카바린지 고정나사(4525)	6	6	6	6	
A-51	SN-0112-1230		Nut(M8×1.25)	베드 받침 너트(4000)	2	2	2	2	
A-52	01-064S-2070		Screw (5/16"n=24)	마개나사	1	1	1	1	
A-54	SC-0513-5050		Screw (1/8"n=44)	갈날 조절 나사(4515)	1	1	1	1	
A-55	10-065A-9577		Cable Holder(3N)	케이블 홀더(3N)	2	2	2	2	
A-56	SC-A174-4122		Slot Head Screw	홈볼이 납작 작은나사(807011)	4	4	4	4	

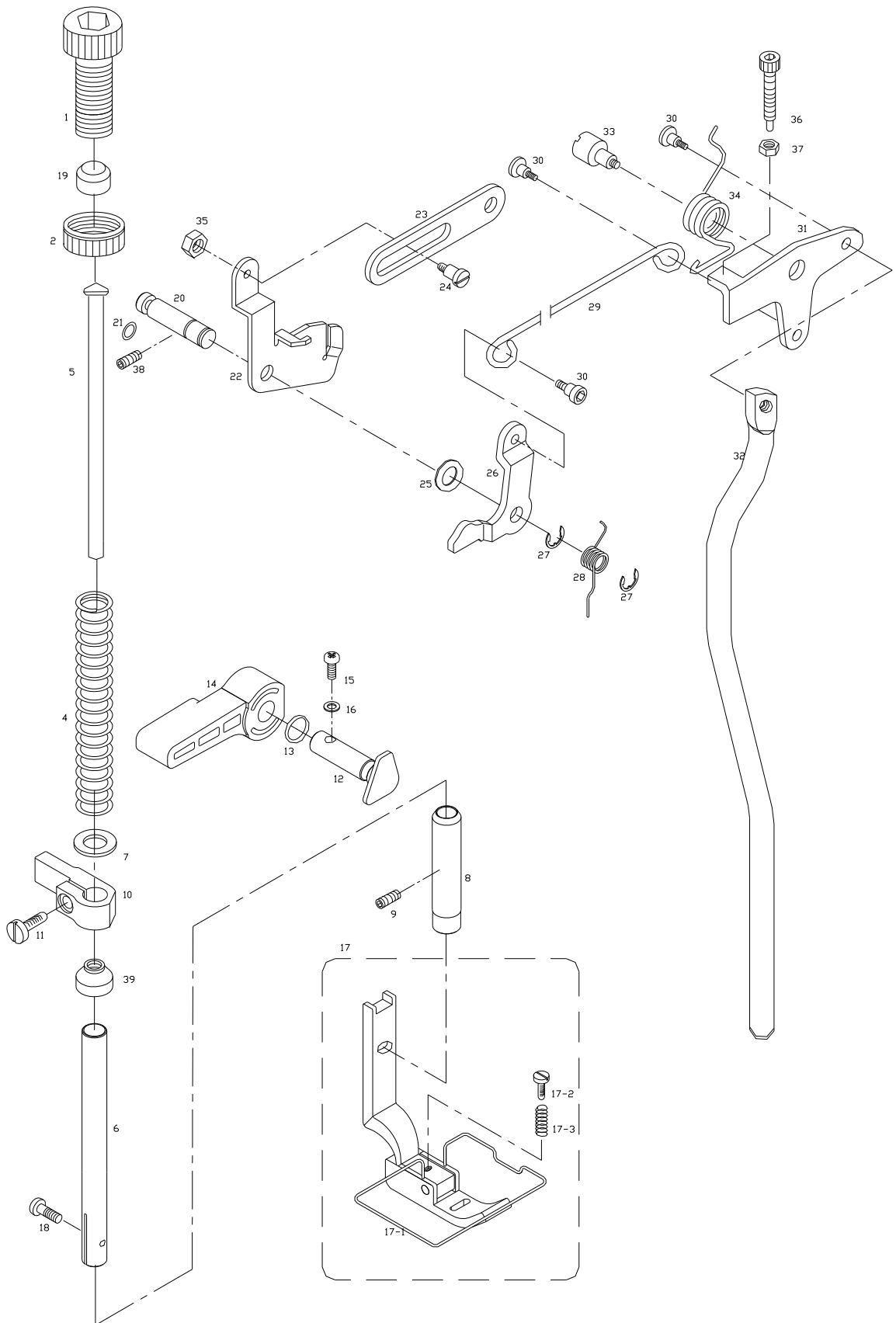


Ref. No.	Parts No.	Note	Name of Parts	품 명	Q'ty				Applied Period
					7L	L	7M	M	
B-1	02-101A-2070		Upper Shaft	상축	1	1	1	1	
B-2	02-120A-2070		Link Cam	링크 캠	1	1	1	1	
B-3	SC-0183-2700		Screw (15/64"n=28)	베이스 조정나사 (B)	1	1	1	1	
B-4	SC-A308-4517		Screw (1/4"n=40, l=6)	고정나사	8	8	8	8	
B-5	SC-0153-7400		Screw (1/4"n=40, l=8.5)	타이밍폴리 찰나사(B)	1	1	1	1	
B-6	GP-013118-00		Thread Take Up Lever	실채기	1	1	1	1	
B-7	08-002A-2070		Base for Thread Take Up Lever	실채기 베이스	1	1	1	1	
B-8	08-103A-2070		Thread Take Up Lever Shaft	실채기 축	1	1	1	1	
B-9	SC-0505-3710		Screw (9/64" n=40, l=7)	면판측면카바나사 (상)	3	3	3	3	
B-10	GP-010957-00		Wiper Driving Notch	와이퍼 구동 노치	1	.	1	.	
B-11	08-006C-2070		Wiper Notch Holder	노치 잡이	1	.	1	.	
B-12	SC-000394-00		Screw	와이퍼 구동 노치 찰나사	2	.	2	.	
B-13	04-101A-2070		Needle Bar	바늘대	1	1	1	1	
B-14	04-102A-2070		Needle Bar Holder	바늘대 잡이	1	1	1	1	
B-15	04-003S-2070		Screw	찰나사	1	1	1	1	
B-16	04-104A-2070		Needle Bar Crank	바늘대 크랭크	1	1	1	1	
B-17	04-105A-2070		Needle Bar Holder Guide	바늘대 잡이 안내	1	1	1	1	
B-18	GP-043678-00		Needle Bar Crank Guide	바늘대 크랭크 가이드	1	1	1	1	Apr.27.09
	04-106A-2070		Needle Bar Crank Guide	바늘대 크랭크 가이드	1	1	1	1	
B-19	SC-0174-1230		Screw (11/64"n=40, l=8)	가마잡이 나사	2	2	2	2	
B-20	SC-0174-1230		Screw (11/64"n=40, l=8)	가마잡이 나사	2	2	2	2	
B-21	04-010C-2070		Needle Bar Stopper (8mm)	바늘대 스톱퍼 (A)	1	1	1	1	
B-22	04-013A-2070		Needle Bar Stopper Plate	바늘대 스톱퍼 판	1	1	1	1	
B-23	04-014S-2070		Screw (M4, l=8)	찰나사	2	2	2	2	
B-24			Needle (SY1965 Nm70/10)	바늘 (SY1965 Nm70/10)	1	1	1	1	
B-25	SC-A131-4522		Screw (1/8"n=44, l=5.5)	고정나사	1	1	1	1	
B-26	04-017A-2070		Thread Guide for Needle Bar	바늘대 실 안내	1	1	1	1	
B-27	BR-000129-00		Upper Shaft Bearing (F) (6202 ZZNR)	상축 전 베어링	1	1	1	1	
B-28	02-103A-2070		Upper Shaft Collar (M)	상축 카라 (중)	1	1	1	1	
B-29	02-004A-2070		Upper Shaft Bearing (M) (6004 ZZ)	상축 중 베어링	1	1	1	1	
B-30	02-006A-2070		Upper Shaft Timing Pulley	상축 타이밍 폴리	1	1	1	1	
B-31	02-007C-2070		Side Ring	타이밍 폴리 후렌치	2	2	2	2	
B-32	02-008A-2070		Timing Belt (UNITTA 600-5GT)	타이밍 벨트	1	1	1	1	
B-33	02-019A-2070		Upper Shaft Bearing (R) (6204 ZZNR)	상축 후 베어링	1	1	1	1	
B-34	02-111A-2070		Upper Shaft Collar (R)	상축 카라 (후)	1	1	1	1	
B-35	11-020A-2500		Magnetic Holder	마그네틱 홀더	2	2	2	2	
B-36	11-022W-2500		Washer	찰 와셔	2	2	2	2	
B-37	11-021S-2500		Screw	찰나사	2	2	2	2	
B-38	11-0000-2070		Synchronizer	내장형 싱크로 (組)	1組	1組	1組	1組	
B-39	SC-0173-1230		Screw (3/16"n=32)	톱니받침 블럭 고정나사	2	2	2	2	
B-40	02-018A-2070		Pulley	폴리	1	1	1	1	
B-41	SC-0150-2500		Screw (15/64"n=28, l=14.5)	폴리 고정나사	2	2	2	2	
B-42	SC-0188-1230		Screw (5/16"n=24)	폴리 큰나사	1	1	1	1	
B-43	04-110A-106L		Needle Bar Crank Rod Bearing	바늘대 크랭크 로드 베어링(690000)	2	2	2	2	
B-44	GP-001733-00		Dust Protector	먼지막이	1	1	1	1	

C

Presser Foot & Knee Lifting Mechanism

누름대 무릎올림 관계



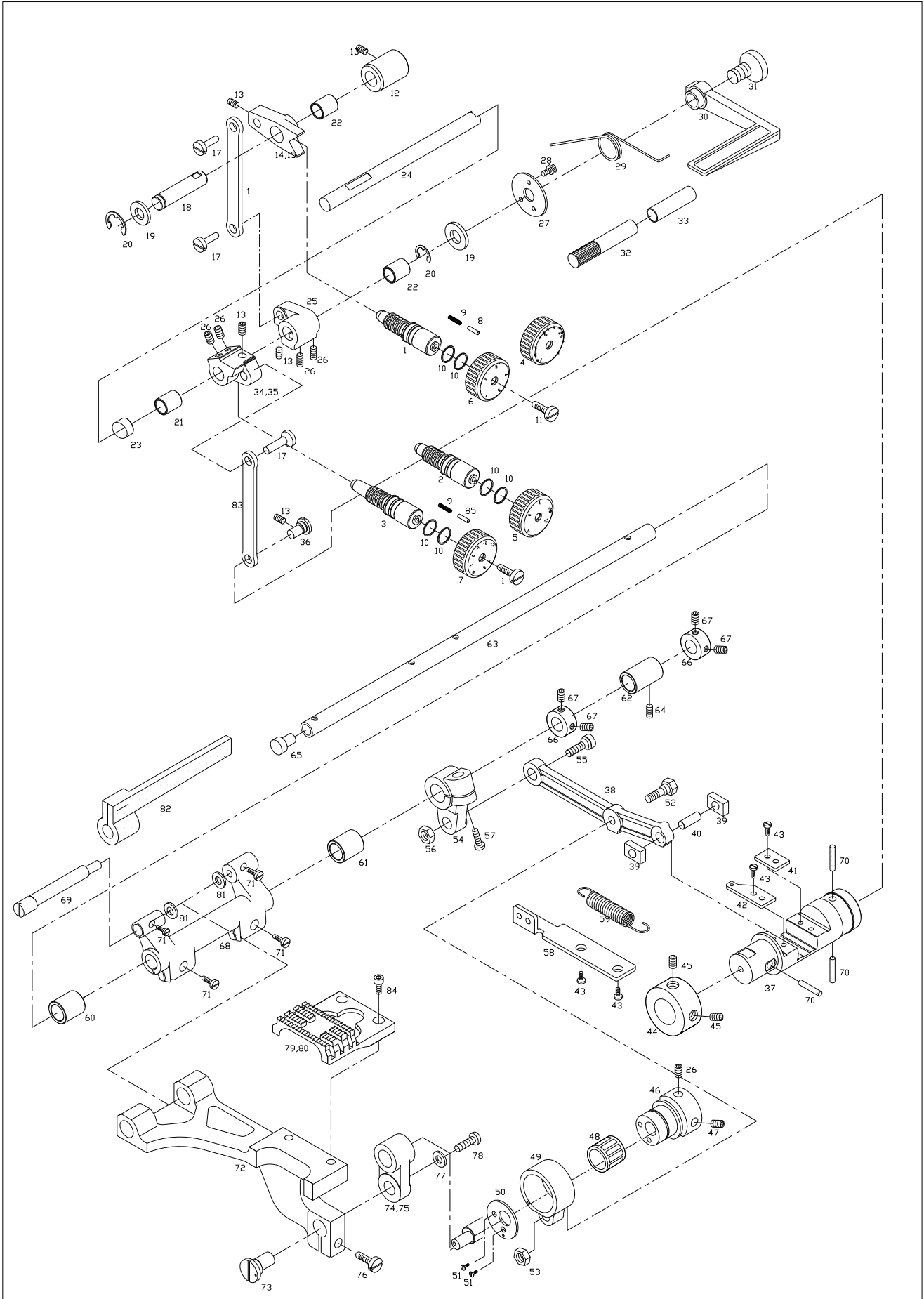


Ref. No.	Parts No.	Note	Name of Parts	품명	Q'ty				Assembly No.
					7L	L	7M	M	
C-1	SC-0339-1230		Presser Adjusting Screw	압력조절 나사 (1/2" n=28)	1	1	1	1	
C-2	05-002C-2500		Nut (9/16"n=20)	압력조절 나사 고정너트	1	1	1	1	
C-4	05-004G-207M		Presser Spring (M)	누름대 압력조절 스프링 (일반용)	1	1	1	1	
C-5	05-005C-2070		Presser Spring Rod	압력 조절봉	1	1	1	1	
C-6	05-106A-2070		Presser Bar	누름대	1	1	1	1	
C-7	06-102W-2350		Washer	와셔	1	1	1	1	
C-8	05-108A-2070		Presser Bar Bushing	누름대 붓싱	1	1	1	1	
C-9	SC-0164-2700		Screw (M5, l=5)	캠접촉 카라 고정나사	1	1	1	1	
C-10	05-010A-2070		Presser Bar Holder	누름대 잡이	1	1	1	1	
C-11	SC-0179-3710		Screw (11/64"n=40)	윗뚜껑 접나사	1	1	1	1	
C-12	05-012A-2070		Presser Bar Lifting Cam Shaft	누름대 올리기 캠 축	1	1	1	1	
C-13	02-016R-1230		O-Ring (P4)	O-링	1	1	1	1	
C-14	43-001A-2500		Presser Bar Lifting Lever	누름대 올리기	1	1	1	1	
C-15	SC-0528-1230		Screw (9/64"n=40, l=10)	톱카바나사(우)	1	1	1	1	
C-16	02-019W-1230		Washer	와셔	1	1	1	1	
C-17	05-017A-2070		Presser Foot (8mm)	노루발 (組)-8mm用	1組	1組	1組	1組	C-17
C-17-1	05-071C-2070		Finger Guard	핑거가드	1	1	1	1	C-17
C-17-2	05-017S-2070		Screw (1/8 n=40, l=10)	고정나사	1	1	1	1	C-17
C-17-3	05-017G-2070		Presser Foot Stop Spring	노루발 고정 스프링	1	1	1	1	C-17
C-18	SC-0315-2302		Screw (9/64"n=40, l=9)	노루발 접나사	1	1	1	1	
C-19	05-019A-2070		Spacer for Presser Adjusting Screw	압력조절 나사 스페이스	1	1	1	1	
C-20	43-001A-2070		Shaft for Presser Lifting Link	누름대 올림 링크 축	1	1	1	1	
C-21	43-002C-2070		O-Ring (P3)	O-링	1	1	1	1	
C-22	43-004A-2070		Thread Tension Release Plate	실낱추기 작동판	1	1	1	1	
C-23	43-005A-2070		Tension Release Connecting Rod	실낱추기 연결로드	1	·	1	·	
C-24	43-006S-2070		Stud Screw for C-23	단나사	1	·	1	·	
C-25	40-007W-1600		Washer	와셔	1	1	1	1	
C-26	43-008A-2070		Presser Lifting Link	누름대 올림 링크	1	1	1	1	
C-27	05-014C-1230		E-Ring (φ4)	E-링	2	2	2	2	
C-28	43-010G-2070		Spring for Lifting Link Shaft	올림 링크 축 스프링	1	1	1	1	
C-29	43-011C-2070		Presser Lifting Link Connecting Bar	누름대 올림 링크 연결봉	1	1	1	1	
C-30	43-012S-2070		Stud Screw for C-32	단나사	3	3	3	3	
C-31	43-013A-2070		Knee Lifting Link	무릎올림 링크	1	1	1	1	
C-32	43-014A-2070		Knee Lifting Bar	무릎올림 봉	1	1	1	1	
C-33	SC-001176-00		Stud for Knee Lifting Link	무릎올림 링크 스테드	1	1	1	1	
C-34	43-016G-2070		Spring for Link Stud	링크 스테드 스프링	1	1	1	1	
C-35	SN-0101-7400		Nut (11/64"n=40)	너트	1	·	1	·	
C-36	43-035S-2070		Adjusting Screw	노루발 상승조절나사	1	1	1	1	
C-37	43-036S-2070		Nut (M6)	너트	1	1	1	1	
C-38	SC-0104-5607		Screw (11/64"n=40)	하측중 베어링 부상나사	1	1	1	1	
C-39	05-002R-1230		Rubber Cap for Presser Bar Bushing	누름대 부상 캡	1	1	1	1	

D

Feed Mechanism

피이드 관계

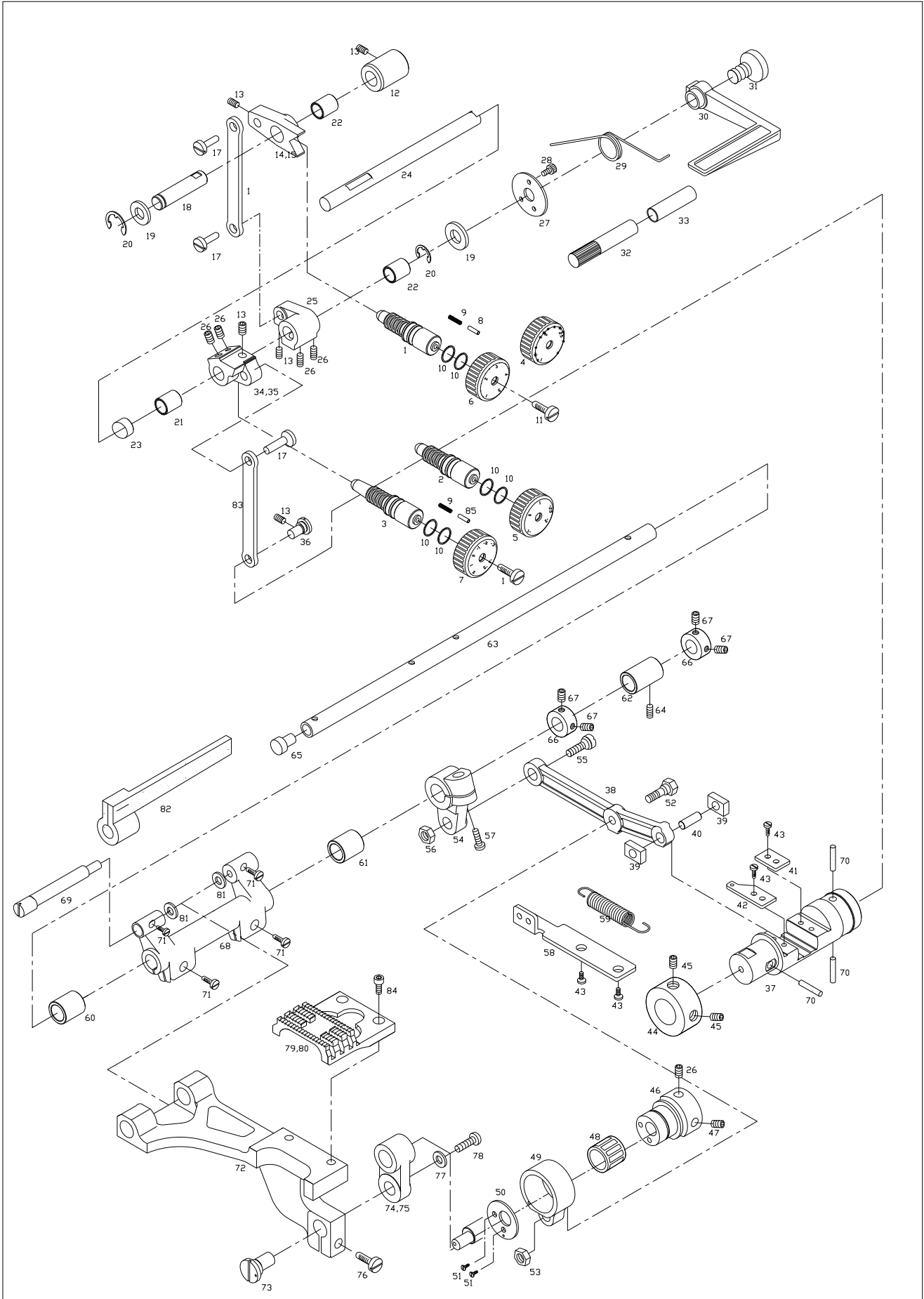


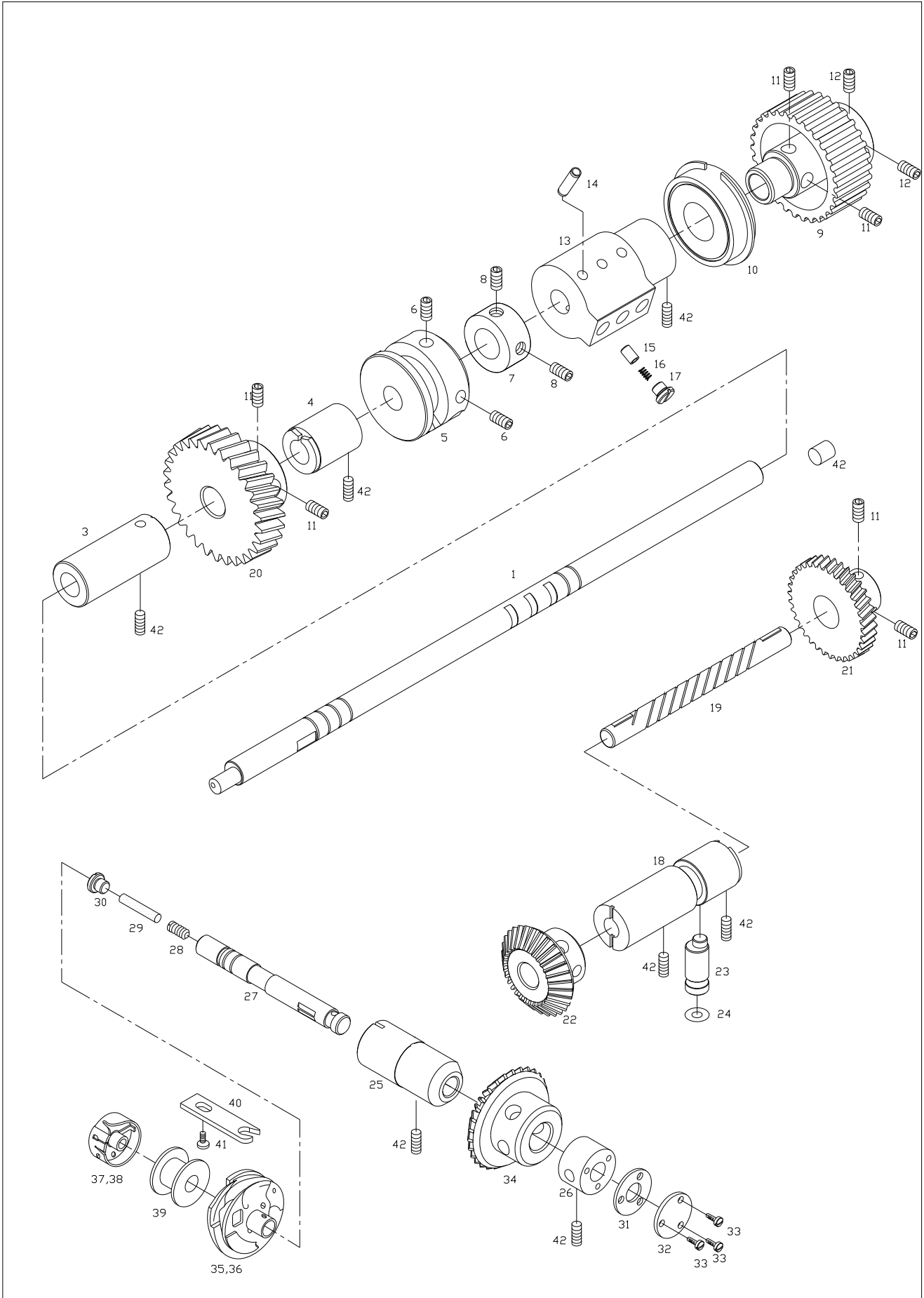
Ref. No.	Parts No.	Note	Name of Parts	품 명	Q'ty				Assembly No.
					7L	L	7M	M	
D-1	06-001A-2070		Feed Regulator Dial Shaft	피이드 조절 다이알 축	1	1	1	1	
D-2	06-002A-207L		Condense Regulator Dial Shaft (L)	콘덴스 조절 다이알 축 (박물용)	1	1	.	.	
D-3	06-003A-207M		Condense Regulator Dial Shaft (M)	콘덴스 조절 다이알 축 (일반용)	.	.	1	1	
D-4	06-004A-207L		Feed Regulator Dial (L)	피이드 조절 다이알 (박물용)	1	1	.	.	
D-5	06-005A-207L		Condense Regulator Dial (L)	콘덴스 조절 다이알 (박물용)	1	1	.	.	
D-6	06-006A-207M		Feed Regulator Dial (M)	피이드 조절 다이알 (일반용)	.	.	1	1	
D-7	06-007A-207M		Condense Regulator Dial (M)	콘덴스 조절 다이알 (일반용)	.	.	1	1	
D-8	PN-000590-00		Dial Pin	다이알 문자판 핀	2	2	.	.	
D-9	06-027G-1230		Dial pin Spring	다이알 핀 스프링	2	2	2	2	
D-10	RI-000021-02		O-Ring	O-링	4	4	4	4	
D-11	SC-0193-1230		Screw (3/16"n=28, l=12)	다이알핀침나사	2	2	2	2	
D-12	06-012A-2070		Feed Regulator Shaft Bushing	피이드 조절기 축 붓싱	1	1	1	1	
D-13	SC-0164-2700		Screw (M5, l=5)	캠접촉카라고정나사	5	5	5	5	
D-14	06-114A-207L		Feed Regulator (L)	피이드 조절기 (박물용)	1	1	.	.	
D-15	06-115A-207M		Feed Regulator (M)	피이드 조절기 (일반용)	.	.	1	1	
D-16	06-017A-2070		Feed Regulator Rod	피이드 조절기 연결 로드	1	1	1	1	
D-17	06-118A-2070		Connecting Rod Shaft	연결 로드 축	3	3	3	3	
D-18	06-020A-2070		Feed Regulator Shaft	피이드 조절기 축	1	1	1	1	
D-19	06-031C-106L		Washer	와셔	2	2	2	2	
D-20	RI-000108-00		E-Ring (φ8)	E-링 (φ8)	2	2	2	2	
D-21	06-128A-106L		Reverse Lever Shaft Bushing (F)	역진레버 축 전붓싱 (DU 1020)	1	1	1	1	
D-22	06-016A-2070		Reverse Lever Shaft Bushing (R)	역진레버 축 후붓싱 (DU 1012)	2	2	2	2	
D-23	06-025R-2070		Reverse Lever Shaft Rubber Cap	역진레버 축 고무마개	1	1	1	1	
D-24	06-126A-2070		Reverse Lever Shaft	역진레버 축	1	1	1	1	
D-25	06-128A-2070		Feed Adjusting Lever	피이드 조절레버	1	1	1	1	
D-26	SC-A308-4517		Screw (1/4"n=40, l=6)	침나사	5	5	5	5	
D-27	06-032C-106L		Cover for Reverse Lever Shaft	역진레버 축 커버	1	1	1	1	
D-28	SC-0211-7500		Screw (M4×P0.7, l=8)	고정메스고정나사	3	3	3	3	
D-29	GP-036832-00		Reverse Lever Return Spring	역진레버 리턴 스프링	1	1	1	1	
D-30	GP-012781-01		Reverse Feed Lever	역진레버	1	1	1	1	
D-31	SC-0185-1230		Screw (3/16"n=32, l=10)	레바댕개나사	1	1	1	1	
D-32	06-036C-2070		Reverse Lever Stopper	역진레버 스토퍼	1	1	1	1	
D-33	GP-030307-00		Rubber for D-32	역진레버 스토퍼 고무	1	1	1	1	
D-34	06-138A-207L		Condense Regulator (L)	콘덴스 조절기 (박물용)	1	1	.	.	
D-35	06-139A-207M		Condense Regulator (M)	콘덴스 조절기 (일반용)	.	.	1	1	
D-36	06-141P-2070		Eccentric Pin for Feed Regulator Shaft	절환기 편심핀	1	1	1	1	
D-37	06-143A-2070		Feed Regulator Shaft	절환기	1	1	1	1	
D-38	06-144A-2070		Feed Regulator Shaft Connecting Rod	절환기 연결로드	1	1	1	1	
D-39	15-220A-7900		Slider Block	슬라이더	2	2	2	2	
D-40	06-046A-2070		Slider Shaft	슬라이더 축	1	1	1	1	
D-41	06-047C-2070		Guide Plate (A)	가이드 판(A)	1	1	1	1	
D-42	06-048C-2070		Guide Plate (B)	가이드 판(B)	1	1	1	1	
D-43	SC-0543-2302		Screw (11/64"n=40, l=8)	톱카바힌지고정나사	6	6	6	6	
D-44	07-252A-5607		Collar for D-37	절환기 고정 카라	1	1	1	1	
D-45	SC-0317-2700		Screw (15/64"n=28, l=7.5)	캠접촉안내고정나사	2	2	2	2	
D-46	06-153A-2070		Feed Cam	피이드 캠	1	1	1	1	
D-47	SC-A117-4417		Screw (1/4"n=40, l=8.5)	침나사	1	1	1	1	
D-48	06-056A-2070		Feed Cam Bearing	피이드 캠 베어링 (FWF-222817)	1	1	1	1	
D-49	06-157A-2070		Feed Cam Connecting Rod	피이드 캠 연결 로드	1	1	1	1	
D-50	06-058C-2070		Cover for D-48	피이드 캠 베어링 커버	1	1	1	1	
D-51	SC-A301-4119		Screw (9/64"n=40)	침나사	2	2	2	2	
D-52	06-060S-2070		Stud Screw for D-38	단나사	1	1	1	1	
D-53	SN-0105-3400		Nut (15/64"n=28)	수평운동로드단나사너트	1	1	1	1	
D-54	06-162A-2070		Feed Rock Crank	피이드 요동 크랭크	1	1	1	1	
D-55	06-063S-2070		Stud Screw for D-54	단나사	1	1	1	1	
D-56	SN-0107-1230		Nut (9/32"n=28)	피이드조절기 연결 단나사 너트	1	1	1	1	

D

Feed Mechanism

피이드 관계





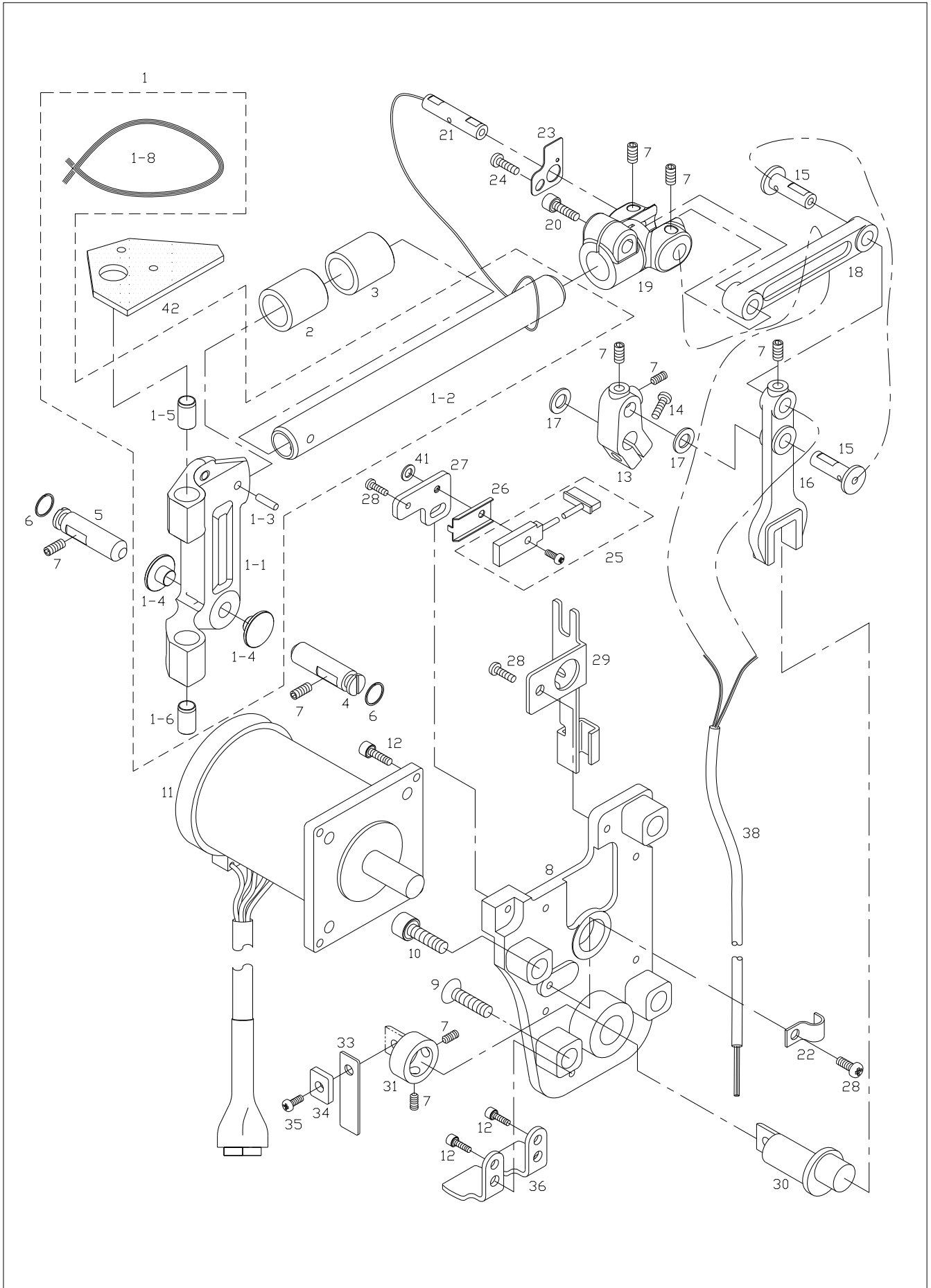


Ref. No.	Parts No.	Note	Name of Parts	품명	Q'ty				Assembly No.
					7L	L	7M	M	
E-1	GP-019821-00		Lower Shaft	하축 (사절용)	1	1	1	1	
E-3	GP-031776-00		Lower Shaft Bushing (F)	하축 전봇싱	1	1	1	1	
E-4	07-004A-2070		Lower Shaft Bushing (M)	하축 중봇싱	1	1	1	1	
E-5	10-041A-2077		Thread Trimming Cam	사절캠	1	.	1	.	
E-6	SC-0153-7400		Screw (1/4"n=40, l=8.5)	타이밍폴리 칩나사 B	2	.	2	.	
E-7	10-143A-2077		Collar for E-5	사절캠 카라	1	.	1	.	
E-8	SC-A550-4517		Hex Set Screw	육각구멍볼이 멈춤나사	2	.	2	.	
E-9	07-005A-2070		Lower Shaft Timming Pulley	하축 타이밍 폴리	1	1	1	1	
E-10	BR-000129-00		Lower Shaft Bearing (R)	하축 후 베어링 (6202 ZZNR)	1	1	1	1	
E-11	SC-A308-4517		Screw (1/4"n=40, l=6)	칩나사	6	6	6	6	
E-12	SC-0153-7400		Screw (1/4"n=40, l=8.5)	타이밍폴리 나사 B	2	2	2	2	
E-13	07-153A-2070		Lower Shaft Bushing (R)	하축 후봇싱	1	1	1	1	
E-14	07-010A-2070		Nipple	니플	5	5	5	5	
E-15	07-011A-2070		Piston	피스톤	3	3	3	3	
E-16	07-012G-2070		Piston Spring	피스톤 스프링	3	3	3	3	
E-17	07-013S-2070		Cap Screw for E-15	피스톤 마개나사	3	3	3	3	
E-18	GP-019527-00		Hook Driving Shaft Bushing	훅 구동축 봇싱	1	1	1	1	
E-19	07-115A-2070		Hook Driving Shaft	훅 구동축	1	1	1	1	
E-20	07-016A-2070		Lower Shaft Gear	하축 기어	1	1	1	1	
E-21	07-018A-2070		Hook Driving Shaft Gear	훅 구동축 기어	1	1	1	1	
E-22	07-020A-2070		Hook Driving Gear	훅 구동 기어	1	1	1	1	
E-23	07-022A-2070		Eccentric Shaft for E-19	훅 구동축 편심축	1	1	1	1	
E-24	RI-000084-00		O-Ring (P5)	훅 구동축 편심축 O-링 (P5)	1	1	1	1	
E-25	GP-033214-00		Hook Shaft Bushing (F)	훅 축 전봇싱	1	1	1	1	
E-26	07-125A-2070		Hook Shaft Bushing (R)	훅 축 후봇싱	1	1	1	1	
E-27	07-126A-2070		Hook Shaft	훅 축	1	1	1	1	
E-28	07-027S-2070		Screw	칩나사	1	1	1	1	
E-29	06-033M-7400		Felt for E-27	훅 축 펠트	1	1	1	1	
E-30	07-029S-2070		Screw	칩나사	1	1	1	1	
E-31	07-030M-2070		Hook Shaft Cover Gasekt	훅 축 커버 가스켓	1	1	1	1	
E-32	07-031C-2070		Hook Shaft Cover	훅 축 커버	1	1	1	1	
E-33	SC-0126-3800		Screw (3/32"n=56, l=8.4)	실조절장치칩나사	3	3	3	3	
E-34	07-033A-2070		Hook Shaft Gear	훅 축 기어	1	1	1	1	
E-35	07-001A-2077		Hook	훅 (사절용)	1	.	1	.	
E-36	07-001A-2070		Hook	훅 (비사절용)	.	1	.	1	
E-37	07-002A-2077		Bobbin Case	보빈 케이스 (사절용)	1	.	1	.	
E-38	07-002A-2070		Bobbin Case	보빈 케이스 (비사절용)	.	1	.	1	
E-39	07-145A-2077		Bobbin	보빈(사절용)	1	.	1	.	
E-39	07-145A-2070		Bobbin	보빈(비사절용)	.	1	.	1	
E-40	07-003A-2070		Inner Bobbin Stopper	가마잡이	1	1	1	1	
E-41	SC-A170-4124		Screw (9/64"n=40, l=8)	칩나사	1	1	1	1	
E-42	07-057M-2070		Lower Shaft Rubber Cap	하축 고무마개	1	1	1	1	

F

Needle Bar Rocking Mechanism

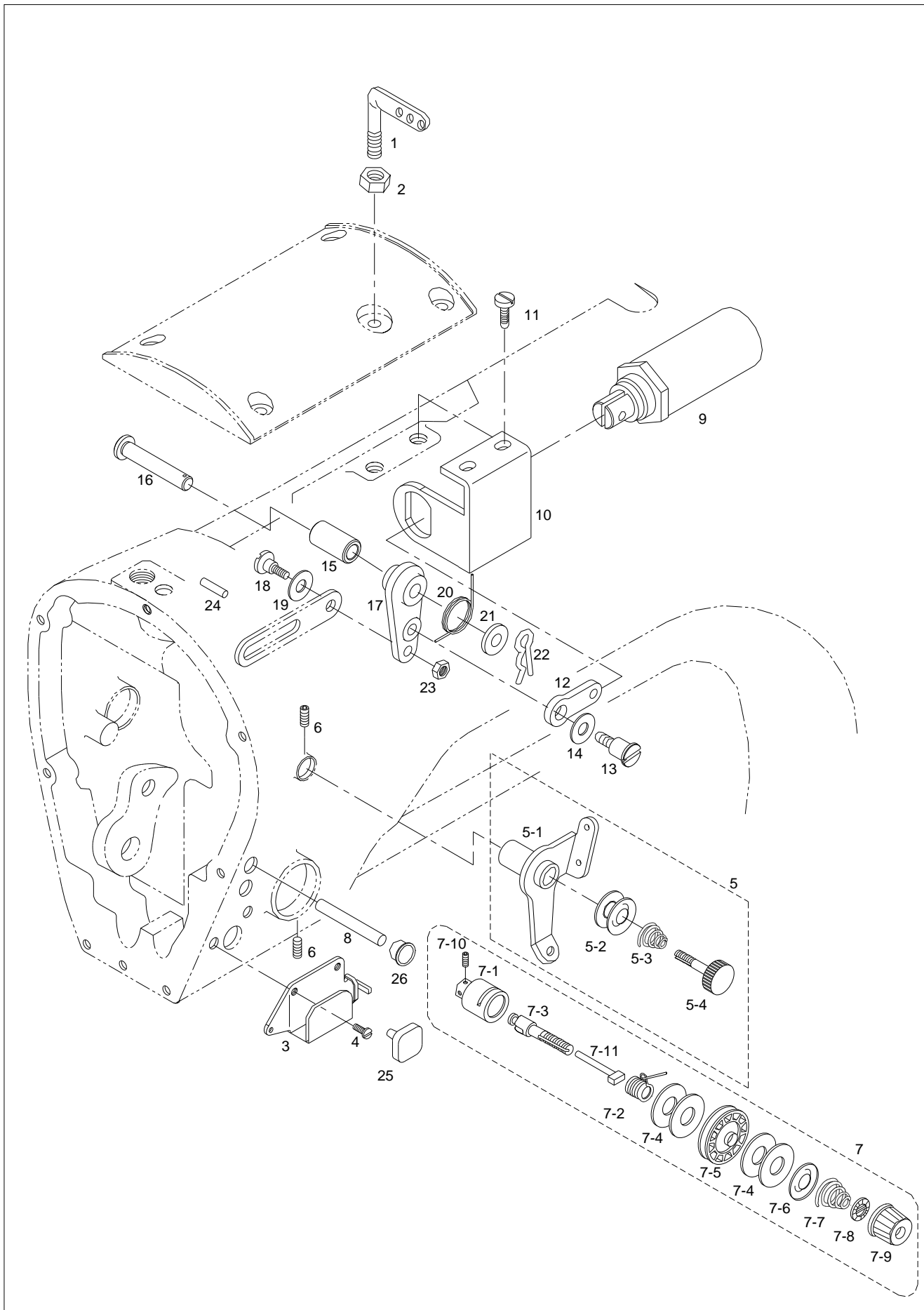
바늘대 요동 관계





Ref. No.	Parts No.	Note	Name of Parts	품 명	Q'ty				Applied Period
					7L	L	7M	M	
F-1	15-201A-2070		Needle Bar Frame Ass'y	바늘대 후레임(조)	1組	1組	1組	1組	
F-1-1	15-101A-2070		Needle Bar Frame	바늘대 후레임	1	1	1	1	
F-1-2	15-102A-2070		Needle Bar Rock Shaft	바늘대 요동 축	1	1	1	1	
F-1-3	15-103P-2070		Pin	니들 베어링 핀	1	1	1	1	
F-1-4	15-104C-2070		Guide Plate	가이드 판	2	2	2	2	
F-1-5	15-105A-2070		Needle Bar Frame Bushing (U)	바늘대 후레임 붓싱 (상)	1	1	1	1	
F-1-6	15-106A-2070		Needle Bar Frame Bushing (L)	바늘대 후레임 붓싱 (하)	1	1	1	1	
F-1-8	44-0000-1230		Oil Wick	유심	1	1	1	1	
F-2	15-002A-2070		Needle Bar Rock Shaft (F)	바늘대 요동 축 전붓싱	1	1	1	1	
F-3	15-003A-2070		Needle Bar Rock Shaft (R)	바늘대 요동 축 후붓싱	1	1	1	1	
F-4	15-004P-2070		Needle Bar Frame Fixing Pin (F)	후레임 고정핀 (前)	1	1	1	1	
F-5	15-005P-2070		Needle Bar Frame Fixing Pin (R)	후레임 고정핀 (後)	1	1	1	1	
F-6	RI-000084-00		O-Ring	O-링 (P5)	2	2	2	2	
F-7	SC-0164-2700		Screw (M5)	고정나사	9	9	9	9	
F-8	15-109A-2070		Motor Base	모터 베이스	1	1	1	1	
F-9	15-010S-2070		Screw (M5, ℓ=25)	침나사	1	1	1	1	
F-10	15-011S-2070		Screw (M5, ℓ=25)	침나사	3	3	3	3	
F-11	15-012A-2070		Motor Ass'y	지그재그 모터 (組)	1組	1組	1組	1組	
F-12	02015SC-4113		Screw (M4, ℓ=10)	침나사	4	4	4	4	
F-13	15-114A-2070		Motor Lever	모터 레버	1	1	1	1	
F-14	SC-0162-5607		Screw (M5, ℓ=12)	사절레바침나사	1	1	1	1	
F-15	GP-018878-00		Motor Lever Shaft	모터 레버 축	2	2	2	2	
F-16	15-017A-2070		Rocking Bracket	요동 브라켓	1	1	1	1	
F-17	15-019W-2070		Washer	와셔	1	1	1	1	
F-18	15-120A-2070		Rock Connecting Rod	요동 연결로드	1	1	1	1	
F-19	15-121A-2070		Rocking Joint	요동 조인트	1	1	1	1	
F-20	SC-0108-2350		Screw (M6, ℓ=18)	싱크로베이스고정볼트	1	1	1	1	
F-21	15-123A-2070		Rocking Joint Shaft	요동 조인트 축	1	1	1	1	
F-22	01-009R-2350		Cable Holder	케이블 잡이	1	1	1	1	
F-23	15-025A-2070		Sensor Slit	센서판	1	1	1	1	
F-24	SC-0365-3710		Screw (9/64"n=40, ℓ=5.5)	면판측면카바나사(하)	1	1	1	1	
F-25	15-127A-2070		Sensor Ass'y	원점 센서 (組)	1組	1組	1組	1組	
F-26	GP-032856-01		Sensor Bracket	센서 브라켓	1	1	1	1	
F-27	15-029C-2070		Sensor Setting Plate	센서 고정판	1	1	1	1	
F-28	SC-0211-7500		Screw (M4, ℓ=8)	고정메스고정나사	3	3	3	3	
F-29	15-031C-2070		Cord Holder	코드잡이	1	1	1	1	
F-30	15-133A-2070		Eccentric Shaft	편심 축	1	1	1	1	
F-31	CL-000327-00		Collar for	편심 축 카라	1	1	1	1	Mar.27.09
	15-134A-2070		Collar for	편심 축 카라	1	1	1	1	
F-33	15-036G-2070		Plate Spring	판 스프링	1	1	1	1	
F-34	15-037C-2070		Plate Spring Holder	판 스프링 고정판	1	1	1	1	
F-35	SC-0175-1230		Screw (11/64"n=40, ℓ=8)	실채기카바나사	1	1	1	1	
F-36	15-039A-2070		Plate Spring Clamp	판 스프링 클램프	2	2	2	2	
F-37	44-0000-1230		Oil Wick	모터 베이스 급유 유심	1	1	1	1	
F-38	GP-034901-00		Oil Return Tube	모터 베이스 급유 호스	0.3	0.3	0.3	0.3	
F-39	02S003S-306H		Washer	와셔	1	1	1	1	
F-40	22S019S-306H		Screw (M4×P0.7)	침나사	4	4	4	4	
F-41	01-017W-1600		Washer	뒷뚜껍 침와셔	1	1	1	1	
F-42	15-107M-2070		Felt	펠트	1	1	1	1	

7L:KM-2070-7L L:KM-2070-L 7M:KM-2070-7M M:KM-2070-M



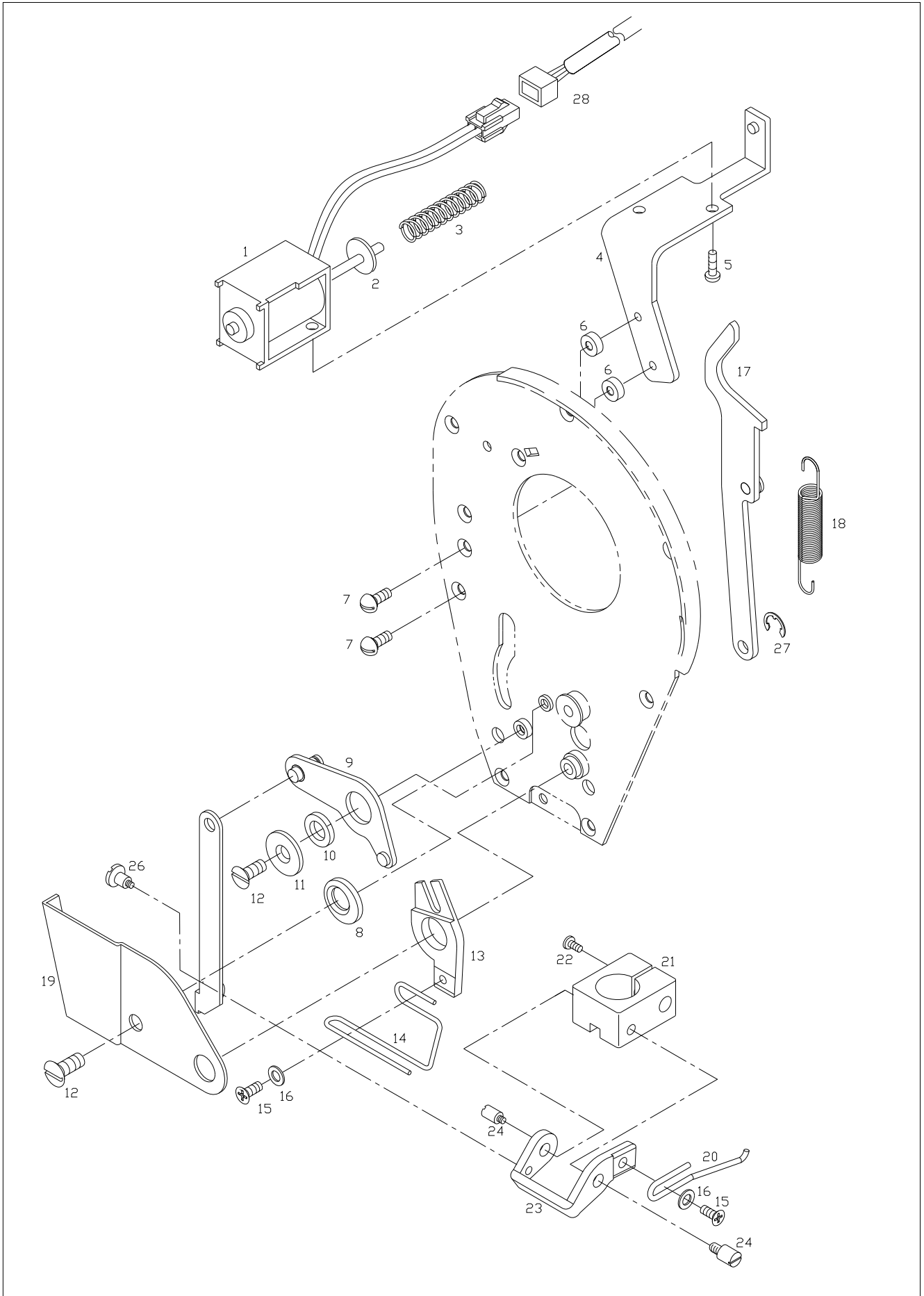


Ref. No.	Parts No.	Note	Name of Parts	품명	Q'ty				Assembly No.
					7L	L	7M	M	
G-1	40-001A-2070		Thread Guide with Three Holes	세구멍 실결이	1	1	1	1	
G-2	SN-0121-7400		Nut	세구멍실결이너트	1	1	1	1	
G-3	40-103C-2070		Thread Guide for Arm	Arm 실안내	1	1	1	1	
G-4	SC-0505-3710		Screw	Arm 실안내 첩나사	2	2	2	2	
G-5	40-005A-2070		Second Thread Tension Adjusting Ass'y	보조 실조절 장치 (組)	1組	1組	1組	1組	G-5
G-5-1	40-105A-2070		Thread Guide Plate	보조 실조절 장치 실안내판	1	1	1	1	G-5
G-5-2			Thread Guide Disc	보조 실조절 장치 접시	2	2	2	2	G-5
G-5-3	40-103A-1230		Spring	보조 실조절 장치 스프링	1	1	1	1	G-5
G-5-4	40-106A-2070		Thread Tension Adjusting Stud	보조 실조절 장치 스테드	1	1	1	1	G-5
G-6	10-017S-8577		Screw	고정나사	2	2	2	2	
G-7	40-007A-2070		Thread Tension Adjusting Ass'y	주 실조절 장치 (組)	1組	1組	1組	1組	G-7
G-7-1	GP-000729,00		Thread Tension Adjusting Body	실조절 장치 몸체	1	1	1	1	G-7
G-7-2	GP-000934,00		Thread Take Up Spring	실채기 스프링	1	1	1	1	G-7
G-7-3	40-404A-1230		Thread Tension Adjusting Shaft	실조절 장치 축	1	1	1	1	G-7
G-7-4	GP-001718-00		Felt	실조절 장치 펠트	4	4	4	4	G-7
G-7-5	11085AF-A001		Thread Guide Disc	실조절 장치 접시	1	1	1	1	G-7
G-7-6	40-304A-1230		Thread Tension Adjusting Presser Plate	실조절 장치 접시 압력판	1	1	1	1	G-7
G-7-7	40-108G-2070		Thread Tension Adjusting Spring	실조절 장치 스프링	1	1	1	1	G-7
G-7-8	40-084W-1230		Spring Stopper	실조절 장치 스토퍼	1	1	1	1	G-7
G-7-9	40-204A-2350		Thread Adjusting Nut	실조절 장치 캡 너트	1	1	1	1	G-7
G-7-10	40-604S-1230		Screw	고정나사	3	3	3	3	G-7
G-7-11	40-117P-2070		Thread Tension Release Pin	실늦추기 핀	1	1	1	1	G-7
G-8	40-009P-2070		Thread Tension Release Drive Pin	실늦추기 구동핀	1	1	1	1	
G-9	40-006A-Z001		Thread Tension Release Solenoid Ass'y	실늦추기 솔레노이드 (組)	1組	·	1組	·	
G-10	40-011A-2070		Thread Tension Release Solenoid Base	실늦추기 솔레노이드 베이스	1	·	1	·	
G-11	SC-A174-4122		Screw (11/64" n=40, l=11)	고정나사	2	·	2	·	
G-12	40-114A-2070		Thread Release Connecting Link	실늦추기 연결링크	1	·	1	·	
G-13	40S026S-306H		Stud Screw for G-12	실늦추기 연결링크 단나사	1	·	2	·	
G-14	10-020W-2700		Washer	와셔	1	·	1	·	
G-15	40-017A-2070		Thread Tension Release Crank Shaft Bushing	실늦추기 크랭크 축 붓싱	1	·	1	·	
G-16	40-018A-2070		Thread Tension Release Crank Shaft	실늦추기 크랭크 축	1	·	1	·	
G-17	40-119A-2070		Thread Tension Release Crank	실늦추기 크랭크	1	·	1	·	
G-18	01-013S-257A		Stud Screw for G-17	실늦추기 크랭크 단나사	1	·	1	·	
G-19	40-007W-1600		Washer	와셔	1	·	1	·	
G-20	40-022G-2070		Tension Release Return Spring	실늦추기 리턴 스프링	1	·	1	·	
G-21	15-026W-3400		Washer	와셔	1	·	1	·	
G-22	21-102P-120H		Snap Pin	분할핀 (호칭경 6)	1	·	1	·	
G-23	SN-0101-1600		Nut (11/64"n=40)	스프링걸이 축 단나사너트	1	·	1	·	
G-24	GP-030307-00		Stopper Rubber for G-17	실늦추기 크랭크 스토퍼 고무	1	·	1	·	
G-25	GP-018312-00		Cushion	스프링 쿠션	1	1	1	1	
G-26	40-008R-1230		Rubber Cap	실조절 장치 고무 캡	1	1	1	1	



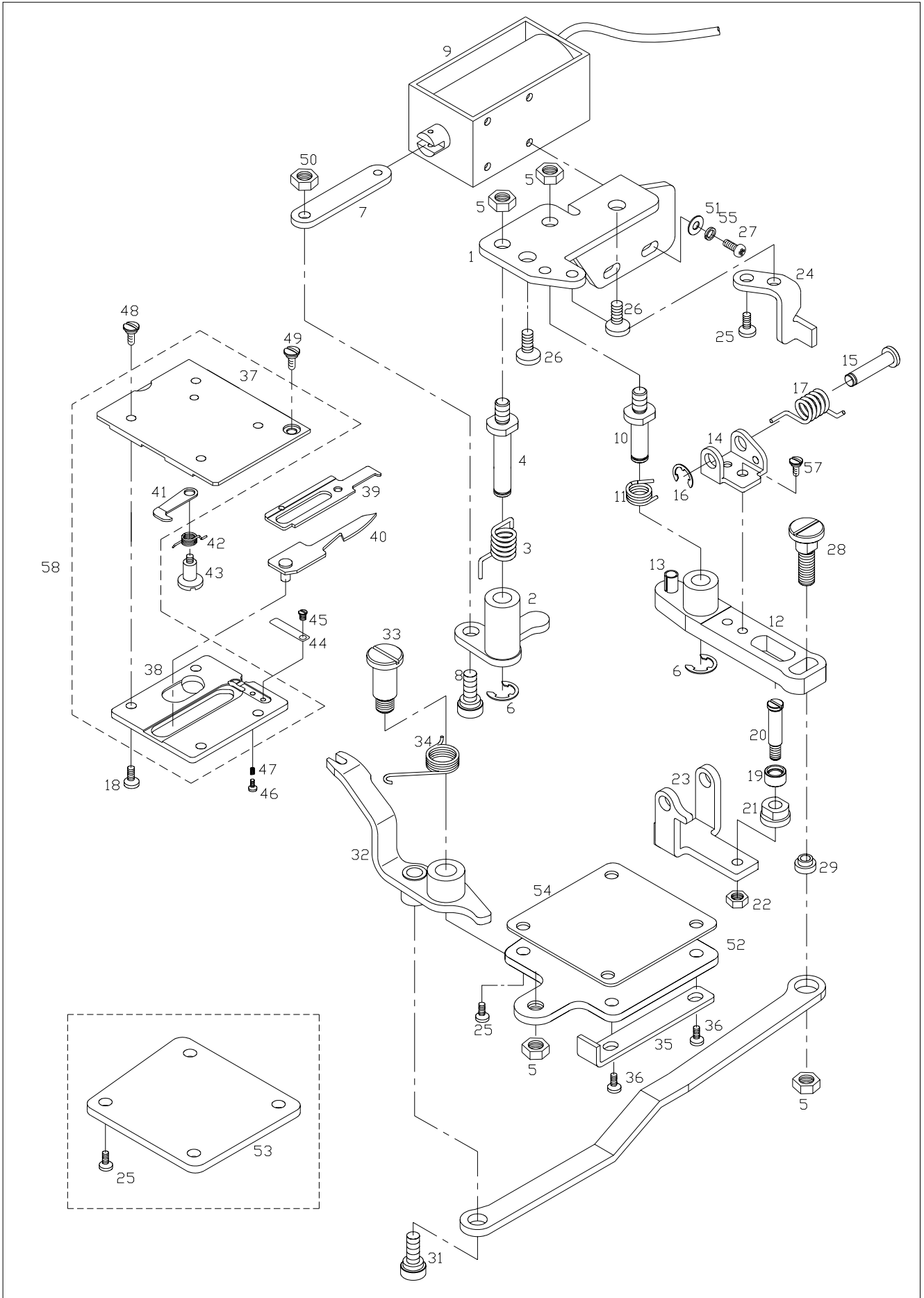
Wiper Mechanism

와이퍼 관계



Thread Trimming Mechanism

사절 관계



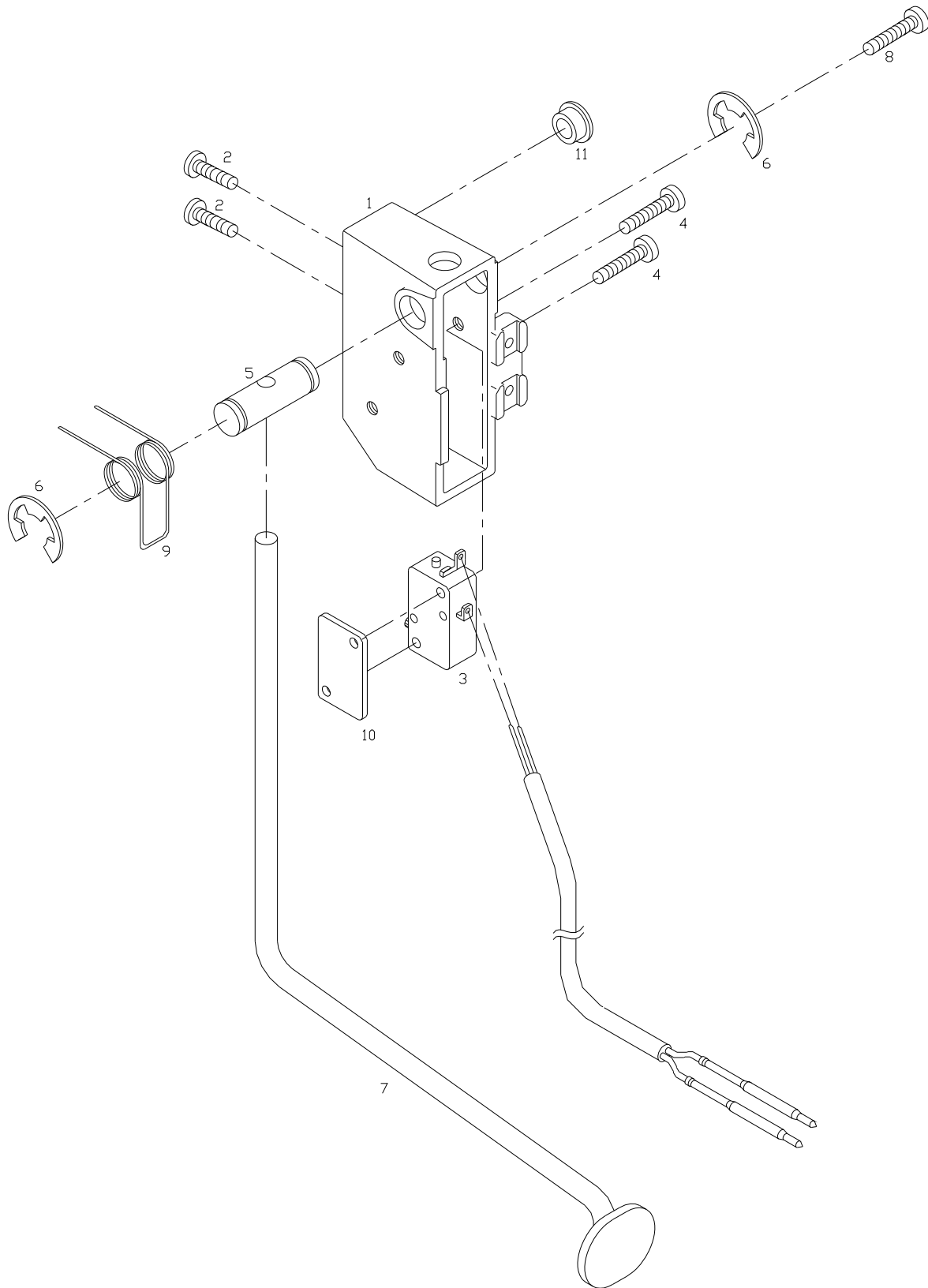


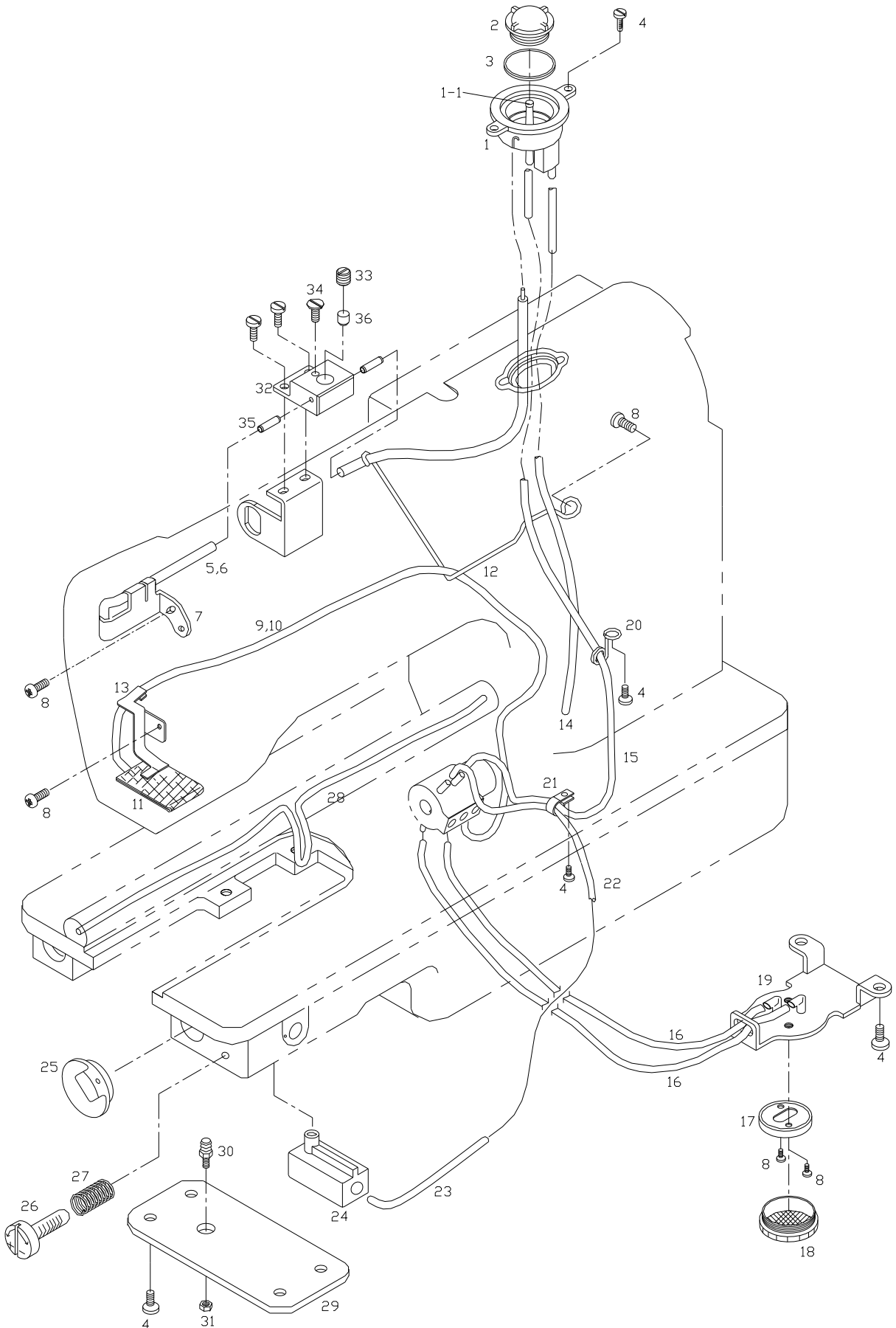
Ref. No.	Parts No.	Note	Name of Parts	품 명	Q'ty				Assembly No.
					7L	L	7M	M	
I-1	10-001A-2077		Thread Trimming Base	사철 베이스	1	.	1	.	
I-2	10-002A-2077		Thread Trimming Clutch Plate	사철 클러치 판	1	.	1	.	
I-3	10-003G-2077		Return Spring for I-2	사철 클러치 판 리턴 스프링	1	.	1	.	
I-4	10-004A-2077		Shaft for I-2	사철 클러치 판 축	1	.	1	.	
I-5	SN-0105-3400		Nut (15/64"n=28)	수평운동 롯데 단나사 너트	4	.	4	.	
I-6	06-020C-7400		E-Ring (φ6)	E-링 (φ6)	2	.	2	.	
I-7	10-007A-2077		Thread Trimming Solenoid Connecting Link	사철 솔레노이드 연결링크	1	.	1	.	
I-8	10-108S-2077		Thread Trimming Stud Screw "A"	사철 클러치 판 단나사"A"	1	.	1	.	
I-9	10-044A-2070		Thread Trimming Solenoid Ass'y	사철 솔레노이드 (組)	1組	.	1組	.	
I-10	10-010A-2077		Shaft for I-12	사철 작동레버 축	1	.	1	.	
I-11	10-012G-2077		Thread Trimming Driving Lever Return Spring	사철 작동레버 리턴 스프링	1	.	1	.	
I-12	10-013A-2077		Thread Trimming Driving Lever	사철 작동레버	1	.	1	.	
I-13	10-014C-2077		Spring Pin (φ5, ℓ=14)	스프링 핀	1	.	1	.	
I-14	10-016A-2077		Thread Trimming Roller Arm Bracket	사철 로울러 암 브라켓	1	.	1	.	
I-15	10-017A-2077		Roller Arm Bracket Shaft	로울러 암 브라켓 축	1	.	1	.	
I-16	05-014C-1230		E-Ring (φ4)	E-링 (φ4)	1	.	1	.	
I-17	10-019G-2077		Roller Return Spring	로울러 리턴 스프링	1	.	1	.	
I-18	SC-0502-2302		Screw (9/64"n=40, ℓ=6)	윗뚜껑 고정판 고정나사(대)	4	.	4	.	
I-19	10-121C-2077		Thread Trimming Cam Roller	사철캠 로울러	1	.	1	.	
I-20	10-022S-2077		Stud Screw for I-19	사철캠 로울러 단나사	1	.	1	.	
I-21	10-123A-2077		Thread Trimming Cam Roller Base	사철캠 로울러 베이스	1	.	1	.	
I-22	SN-0115-7400		Nut (3/16"n=32)	오프너 너트	1	.	1	.	
I-23	10-025A-2077		Thread Trimming Roller Arm	사철 로울러 암	1	.	1	.	
I-24	10-026C-2077		Stopper for I-12	사철 작동 레버 스토퍼	1	.	1	.	
I-25	SC-0543-2302		Screw (11/64"n=40, ℓ=6.5)	홈카바한지 고정나사	4	6	4	6	
I-26	SC-0183-2700		Screw (15/64"n=28, ℓ=14)	베이스 고정나사(B)	2	.	2	.	
I-27	SC-0196-2700		Screw (M3×P0.5, ℓ=8)	솔레노이드부착 고정나사	4	.	4	.	
I-28	10-030S-2077		Adjusting Screw	조정 나사	1	.	1	.	
I-29	10-031A-2077		Screw (3/16"n=32, ℓ=6)	동메스 연결롯데 베이스	1	.	1	.	
I-30	10-032A-2077		Moving Mes Connecting Rod	동메스 연결롯데	1	.	1	.	
I-31	10-034S-2077		Stud Screw for I-30	단나사	1	.	1	.	
I-32	10-035A-2077		Thread Trimming Drive Crank	사철 작동 크랭크	1	.	1	.	
I-33	10-036S-2077		Stud Screw for I-32	사철 작동 크랭크 단나사	1	.	1	.	
I-35	10-039C-2077		Stopper for I-32	사철 작동 크랭크 스토퍼	1	.	1	.	
I-36	SC-0174-1230		Screw (11/64"n=40, ℓ=11)	가마잡이 나사	2	.	2	.	
I-37	10-045A-2077		Mes Bracket	메스 브라켓	1	.	1	.	I-58
I-38	10-046C-2077		Knife Holder	메스잡이	1	.	1	.	I-58
I-39	GP-033340-00		Fixed Mes	고정메스	1	.	1	.	I-58
I-40	10-048A-2077		Moving Mes	동메스	1	.	1	.	I-58
I-41	GP-033353-00		Fixed Mes Clutch	고정메스 클러치	1	.	1	.	I-58
I-42	10-050G-2077		Fixed Mes Clutch Spring	고정메스 클러치 스프링	1	.	1	.	
I-43	10-051S-2077		Stud Screw for I-41	단나사	1	.	1	.	
I-44	10-052C-2077		Lower Thread Holder	밀실잡이	1	.	1	.	
I-45	SC-0125-5607		Screw (3/32"n=56, ℓ=2.2)	바늘대 실안내 찢나사	1	.	1	.	
I-46	SC-0152-1800		Screw (3/32"n=56, ℓ=4.8)	바늘대 실걸이 찢나사	1	.	1	.	
I-47	10-055G-2077		Adjusting Spring for I-44	밀실잡이 조절 스프링	1	.	1	.	
I-48	10-057S-2077		Screw (9/64"n=40)	고정나사	1	.	1	.	
I-49	10-058S-2077		Screw (9/64"n=40 ℓ=6)	고정나사	1	.	1	.	
I-50	SN-0101-1600		Nut (11/64"n=40)	스프링걸이 축 나사 너트	1	.	1	.	
I-51	11-017W-2700		Washer	와셔	4	.	4	.	
I-52	07-050C-2077		Hook Shaft Gear Cover	훅 축 기어 커버 (사절용)	1	.	1	.	
I-53	07-051C-2070		Hook Shaft Gear Cover	훅 축 기어 커버 (비사절용)	.	1	.	1	
I-54	07-052M-2070		Hook Shaft Gear Cover Gasket	훅 축 기어 커버 가스켓	1	1	1	1	
I-55	11-016W-2700		Spring Washer	스프링 와셔	4	.	4	.	
I-57	SC-A156-4118		Plus Minus Round Head Screw	홈볼이 냄비작은 나사	4	.	4	.	
I-58	AS-007504-00		Mes Bracket Ass'y	메스 브라켓 (組)	1組	.	1組	.	

J

Reverse Button Mechanism

역진 버튼 관계

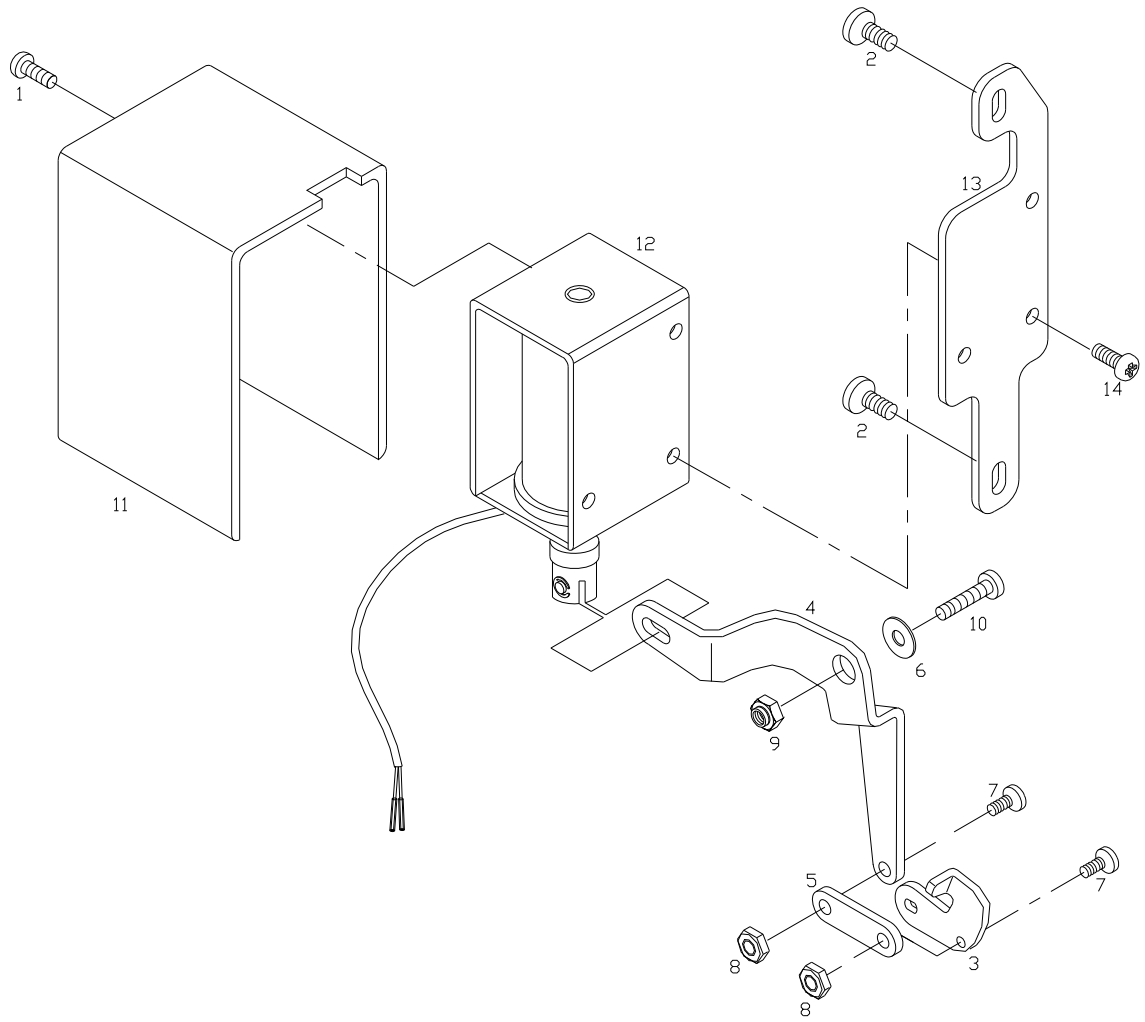


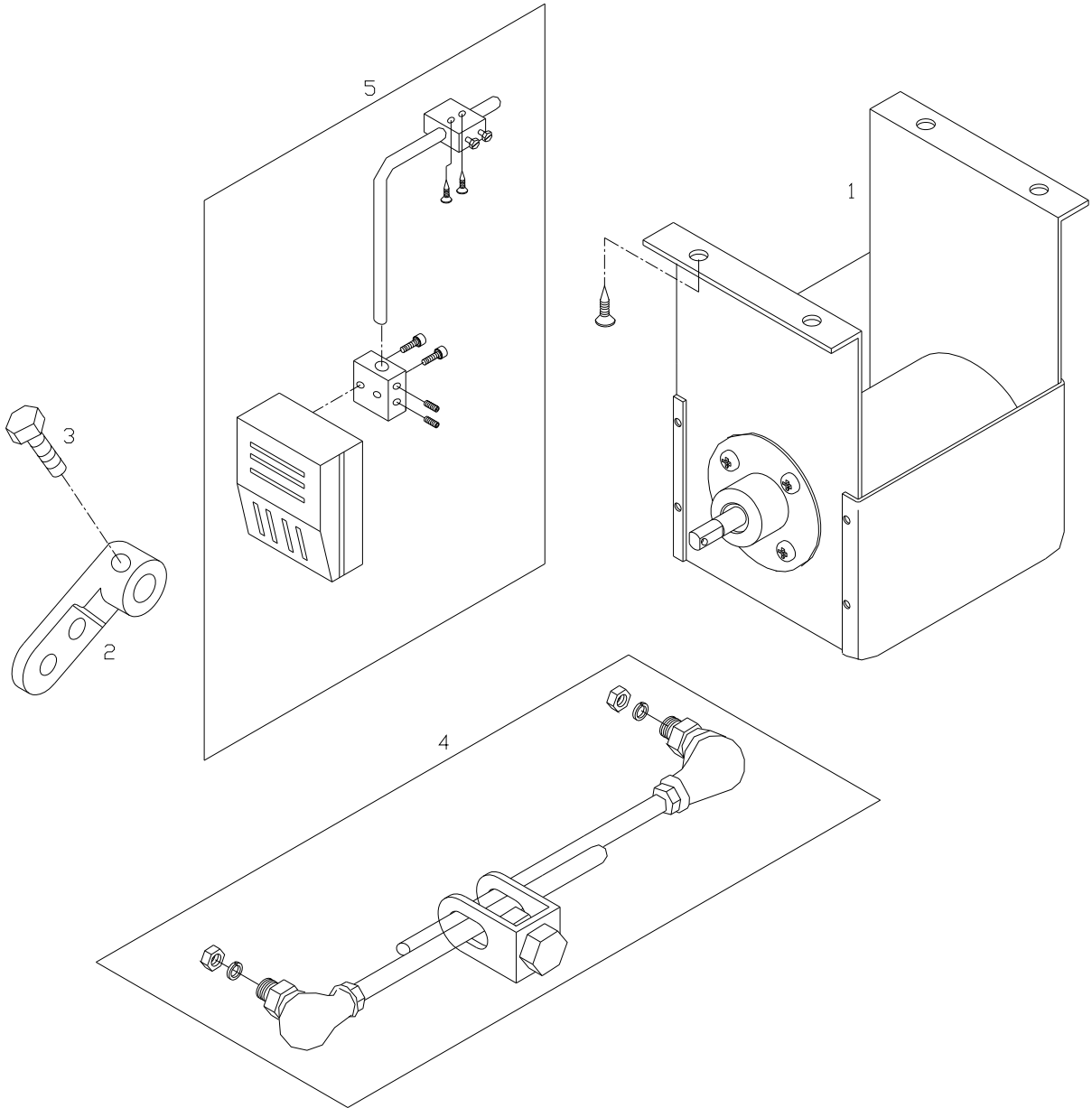


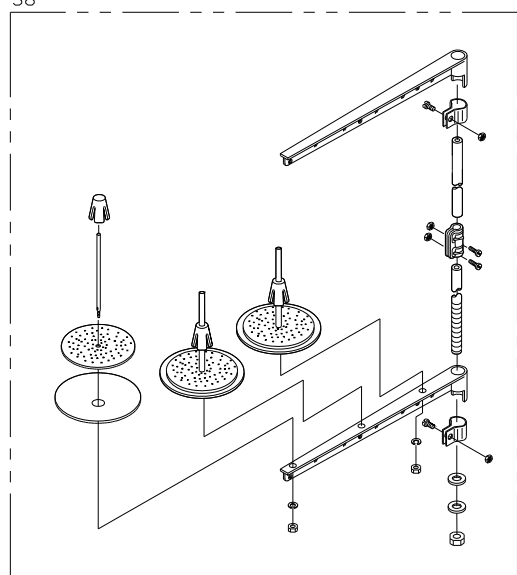
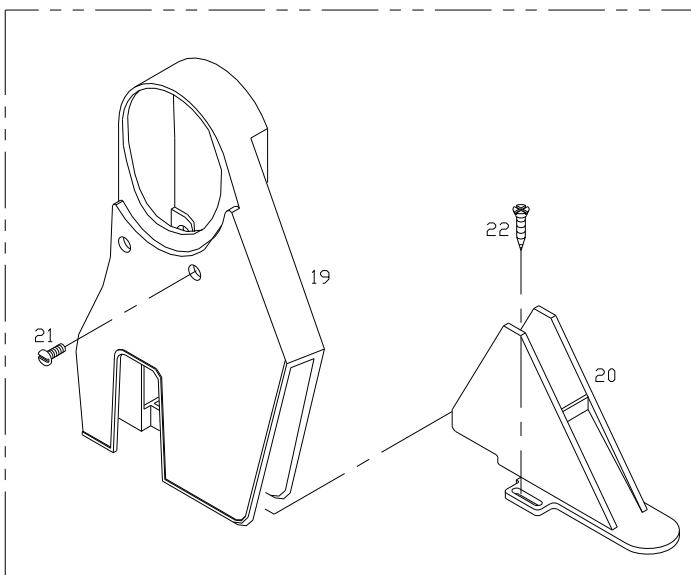
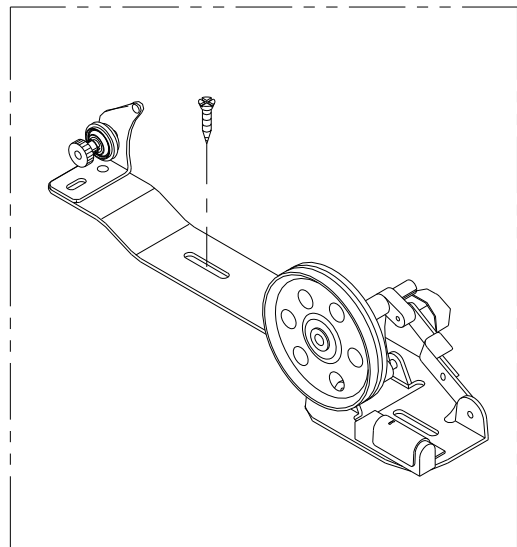
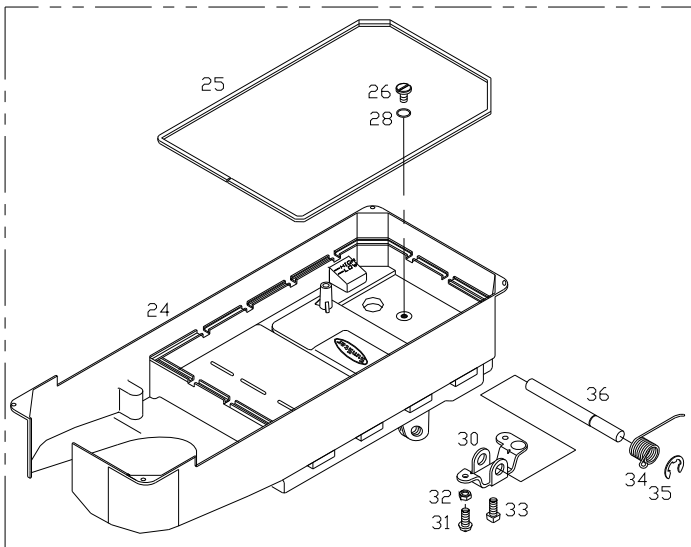
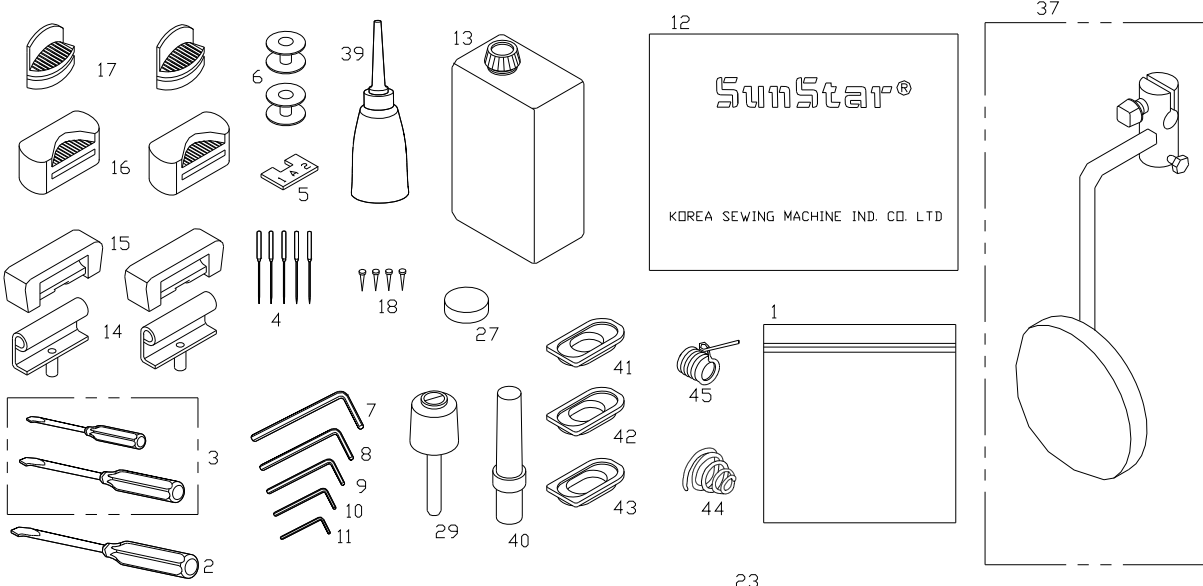


Reverse Feed Mechanism

역진 관계







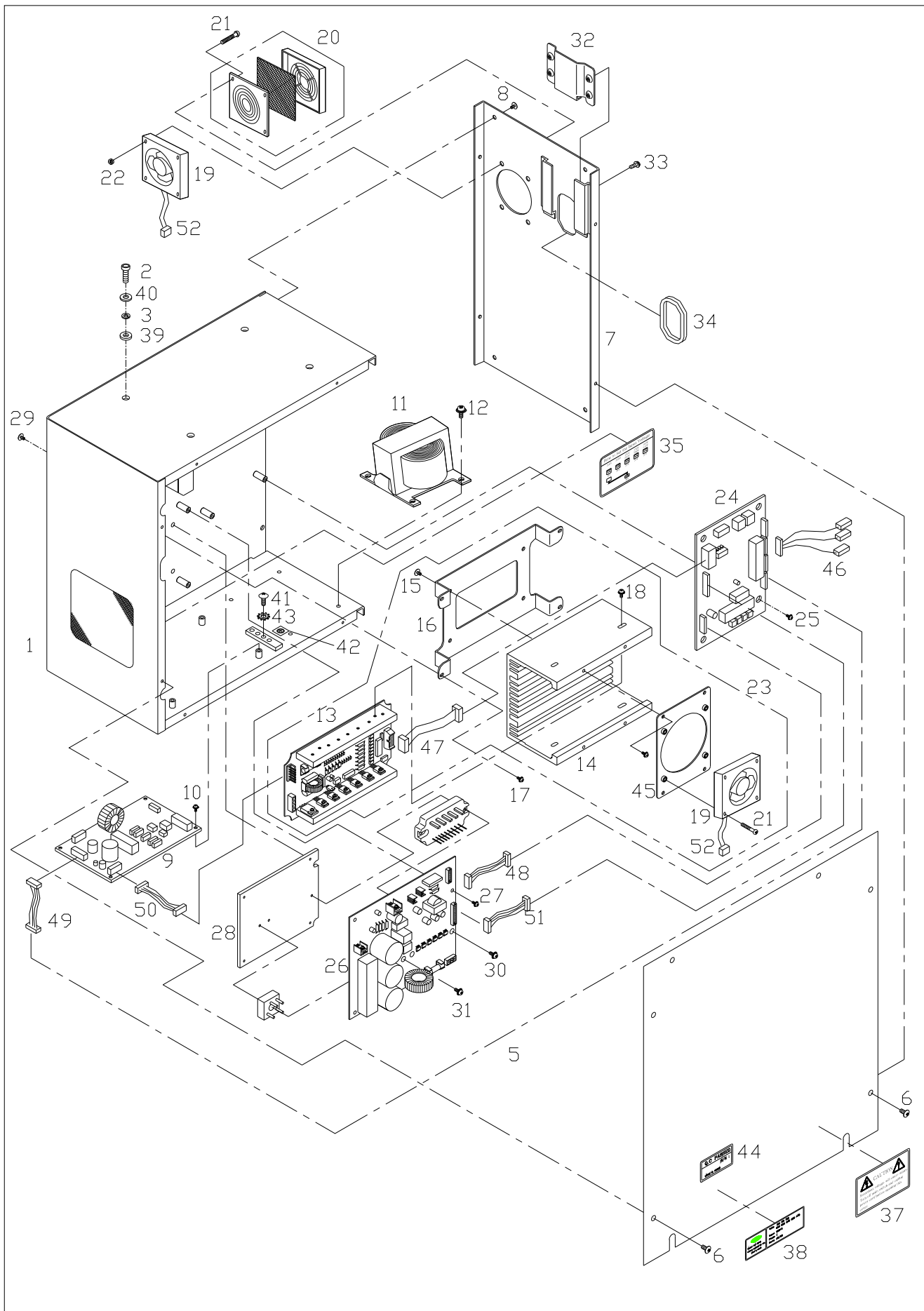


Ref. No.	Parts No.	Note	Name of Parts	품명	Q'ty				Assembly No.
					7L	L	7M	M	
N-1	91-001C-1230		Accessory Bag	액세서리 백	1	1	1	1	
N-2	91-002C-1230		Driver (L)	드라이버 (大)	1	1	1	1	
N-3	91-103C-1230		Driver (S, M)	드라이버 (中, 小)	1	1	1	1	
N-4			Needle (SCHMETZ SY1965Nm10)	바늘 (SY1965Nm70/10)	3	3	3	3	
N-5	91-005C-2070		Trimming Gauge (A)	타이밍 게이지 (A)	1	1	1	1	
N-6	07-145A-2077		Bobbin	보빈 (사철)	2	·	2	·	
	07-145A-2070		Bobbin	보빈 (비사철)	·	2	·	2	
N-7	91-002C-2700		L-Wrench (5mm)	L 렌치 (5mm)	1	1	1	1	
N-8	91-001C-3800		L-Wrench (4mm)	L 렌치 (4mm)	1	1	1	1	
N-9	91-003C-2700		L-Wrench (3mm)	L 렌치 (3mm)	1	1	1	1	
N-10	91-004C-2700		L-Wrench (2.5mm)	L 렌치 (2.5mm)	1	1	1	1	
N-11	91-001C-2700		L-Wrench (2mm)	L 렌치 (2mm)	1	1	1	1	
N-12	91-108M-640L		Head Cover	미싱커버 (C)	1	1	1	1	
N-13	91-008C-1230		Oil Can	오일 캔 (본본용 1.0L)	1	1	1	1	
N-14	GP-020482-00		Head Hinge	헤드 힌지	2	2	2	2	
N-15	01-042R-1230		Head Hinge Rubber	헤드 힌지 고무	2	2	2	2	
N-16	01-241R-1230		Head Support Rubber (A)	힌지 고무 (중)	2	2	2	2	
N-17	01-213R-1230		Head Support Rubber (B)	힌지 고무 (소)	2	2	2	2	
N-18	01-003C-1230		Nail	고정못	10	10	10	10	
N-19	60-001A-2070		Belt Cover (A)	벨트 커버 (A)	1	1	1	1	
N-20	60-002A-2070		Belt Cover (C)	벨트 커버 (C)	1	1	1	1	
N-21	SC-0533-3400		Screw (11/64"n=40)	가마잡이나사	3	3	3	3	
N-22	91-002S-3400		Screw (9/64" n=40, l=5.5)	젓나사	2	2	2	2	
N-23	AS-009197-00		Bobbin Winder Ass'y	실감기 (組)	1組	1組	1組	1組	
N-24	44-038A-2070		Oil Pan	오일팬	1	1	1	1	
N-25	44-003M-1230		Oil Pan Gasket	오일팬 가스켓	2	2	2	2	
N-26	SC-0347-1230		Screw (M8×P1.25)	배유구멍마개나사	1	1	1	1	
N-27	44-010C-1230		Magnetic	자석	1	1	1	1	
N-28	44-005R-1230		O-Ring	O 링	1	1	1	1	
N-29	43-010A-1600		Knee Lifting Stick Support Cap	무릎올림 봉 받침 캡	1	1	1	1	
N-30	43-007A-1600		Control Body	제어체	1	1	1	1	
N-31	SC-0546-1230		Screw	제어체 운동조절나사(대)	2	2	2	2	
N-32	SN-0105-3400		Nut	수평운동롯트 단나사 너트	2	2	2	2	
N-33	SC-0106-7400		Screw	포크 젓나사	1	1	1	1	
N-34	43-024G-2070		Control Body Spring	제어체 스프링	1	1	1	1	
N-35	43-009C-1600		E-Ring(φ9)	E 링 (φ9)	1	1	1	1	
N-36	43-018C-2070		Control Body Shaft	제어체 축	1	1	1	1	
N-37	43-031A-2070		Knee Lifting Pad Ass'y	무릎올림 패드 (組)	1組	1組	1組	1組	
N-38	GP-022624-00		Thread Stand Ass'y	실패꽃이 (組)	1組	1組	1組	1組	
N-39	91-011C-1230		Oiler	오일 주유통	1	1	1	1	
N-40	91-012C-1230		Head Rest	두부지지봉	1	1	1	1	
N-41	04-012C-2070		Needle Bar Stopper (3mm)	바늘대 스토퍼 (3mm)	1	1	1	1	
N-42	04-011C-2070		Needle Bar Stopper (5mm)	바늘대 스토퍼 (5mm)	1	1	1	1	
N-43	04-009C-2070		Needle Bar Stopper (10mm)	바늘대 스토퍼 (10mm)	1	1	1	1	
N-44	40-108G-2070		Thread Tension Adjusting Spring	실조절장치 스프링	1	1	1	1	
N-45	GP-000934-00		Thread Take Up Spring	실채기 스프링	1	1	1	1	

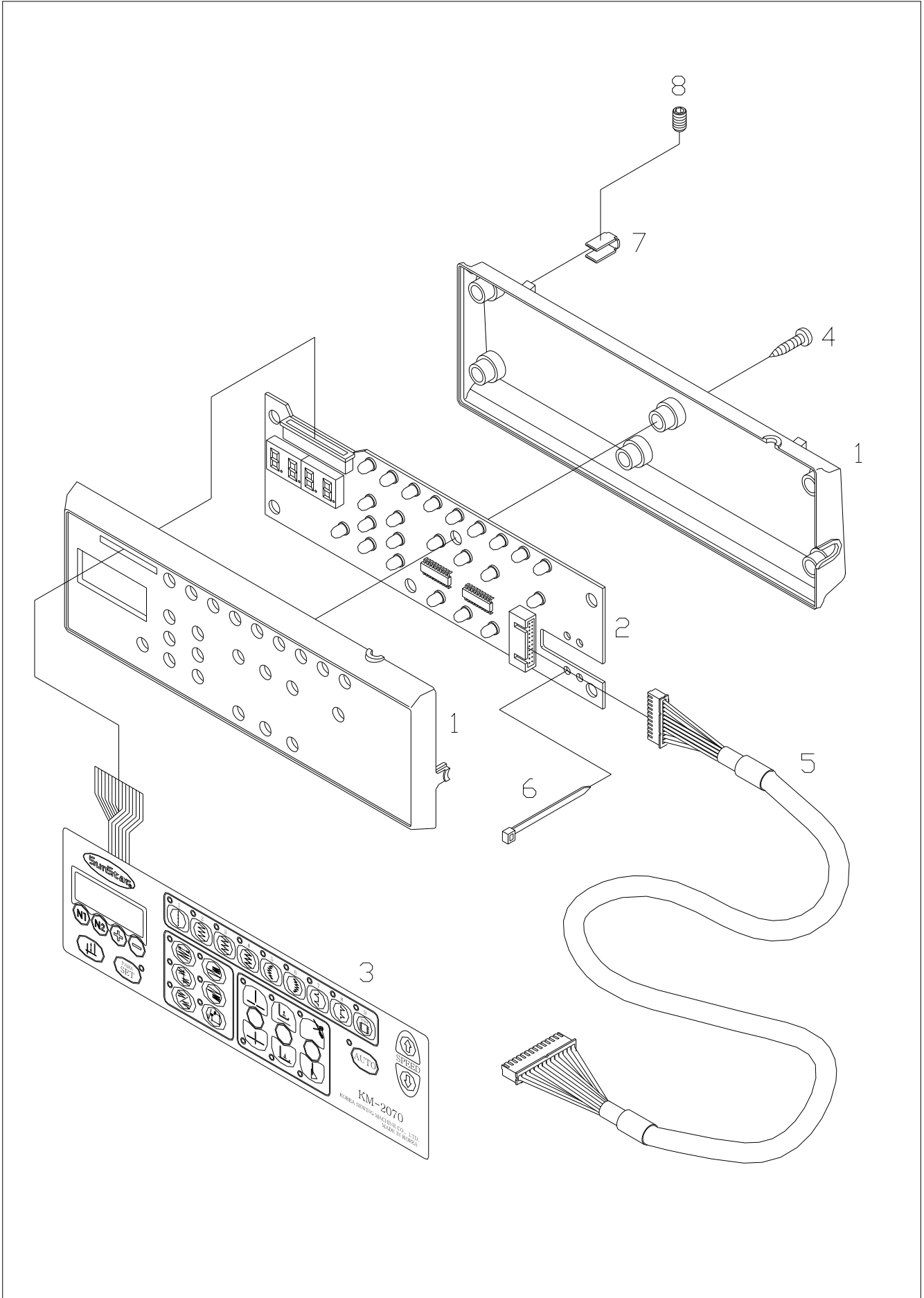
O

Control Box Mechanism

컨트롤 박스 관계



Ref. No.	Parts No.	Note	Name of Parts	품명	Q'ty				Assembly No.
					7L	L	7M	M	
O-1	GP-022749-00		Control Box	콘트롤 박스	1	1	1	1	
O-2	01-001M-PT02		Screw for Control Box (M6×L45)	콘트롤 박스 쥘나사	4	4	4	4	
O-3	10-003S-SW66		Spring Washer for Control Box (φ6)	콘트롤 박스 스프링 와셔	4	4	4	4	
O-5	GP-022754-00		Front Cover	전면 커버	1	1	1	1	
O-6	10-003M-PT01		Screw for Front Cover (M4×L6)	전면 커버 쥘나사	8	8	8	8	
O-7	GP-022753-00		Side Cover	측면 커버	1	1	1	1	
O-8	10-003M-PT01		Screw for Side Cover (M4×L6)	측면 커버 쥘나사	6	6	6	6	
O-9	BD-000675-00		Power P.C.B (110V)	파워 보드(110V)	1	1	1	1	
	BD-000675-00		Power P.C.B (220V)	파워 보드(220V)	1	1	1	1	
O-10	10-002S-SW66		Screw for Power Board (M3×L7)	파워 보드 쥘나사	4	4	4	4	
O-11	01-004A-2070		Transformer (110V)	트랜스 포머(110V)	1	1	1	1	
	GP-022757-00		Transformer (220V)	트랜스 포머(220V)	1	1	1	1	
O-12	07-025S-3701		Screw for Trancsformer (M5×L12)	트랜스 포머 쥘나사	4	4	4	4	
O-13	BD-000685-01		Step Driver Board	스텝 드라이브 보드	1	1	1	1	
O-14	05-002A-9000		Heat Sink X-Y Drive	X, Y 드라이브 방열판	1	1	1	1	
O-15	SC-000683-00		Screw for Heat Sink X-Y Drive (M4×L12)	X, Y 드라이브 방열판 쥘나사	4	4	4	4	
O-16	05-003A-XY10		Bracket for Heat Sink X-Y Drive	X, Y 드라이브 방열판 브라켓	1	1	1	1	
O-17	SC-000683-00		Screw for Bracket (M4×L12)	브라켓 쥘나사	4	4	4	4	
O-18	10-006M-SW66		Screw for P.C.B Bracket (M4×L12)	P.C.B 브라켓 쥘나사	4	4	4	4	
O-19	01-005A-BT01		Fan	팬	2	2	2	2	
O-20	GP-017378-00		Fan Cover	팬 커버	1	1	1	1	
O-21	01-002M-AU12		Screw for Fan (M4×L35)	팬 쥘나사	6	6	6	6	
O-22	09-041S-3701		Nut for Fan (M4)	팬 쥘너트	2	2	2	2	
O-23	04-0000-2070		Step Drive (Ass'y)	스텝 드라이브 (組)	1	1	1	1	
O-24	BD-000236-01		Digital Board	디지털 보드	1	1	1	1	
O-25	10-002S-SW66		Screw for Digital Board (M3×L7)	디지털 보드 쥘나사	4	4	4	4	
O-26	03-0000-BR00		Main Motor Drive	주축 구동 드라이브 보드	1	1	1	1	
O-27	10-002S-SW66		Screw for Main Motor Drive (M3×L7)	주축 구동 드라이브 쥘나사	4	4	4	4	
O-28	01-005A-BH30		Heat Sink Main Motor Drive	주축 구동 드라이브 방열판	1	1	1	1	
O-29	01-003M-PT01		Screw for Heat Sink Main Motor Drive (M4×L16)	주축 구동 드라이브 방열판 쥘나사	4	4	4	4	
O-30	SC-000683-00		Screw for IPM (M4×L16)	IPM 쥘나사	1	1	1	1	
O-31	01-003S-2070		Screw for Bridge Diode (M4×L8)	브릿지 다이오드 쥘나사	1	1	1	1	
O-32	01-007A-BT01		Connector Cover	컨넥터 커버	1	1	1	1	
O-33	01-004S-2070		Screw for Connector Cover (M4×L6)	컨넥터 커버 쥘나사	2	2	2	2	
O-34	01-001R-BT10		Ending Bushing	엔딩 부싱	1	1	1	1	
O-35	01-001S-2070		Sticker for Voltage Setting	전압 설정 스티커	1	1	1	1	
O-37	GP-011049-00		Caution Sticker	경고 스티커	1	1	1	1	
O-38	01-001S-2070		Model Sticker	모델 스티커	1	1	1	1	
O-39	91-001C-BT10		Urethan Washer	우레탄 와셔	4	4	4	4	
O-40	91-001C-PT10		Table Washer	테이블 와셔	4	4	4	4	
O-41	01-037S-2070		Screw	나사	1	1	1	1	
O-42	09-012S-CE53		Earth Sticker	어스 스티커	1	1	1	1	
O-43	09-044W-3701		Washer	링터미널 고정 이불이 와셔(M5)	1	1	1	1	
O-44	04-023C-SC53		QC Sticker	QC 스티커	1	1	1	1	
O-45	06-001A-XY01		Fan Fix Bracket	팬 고정브라켓	1	1	1	1	
O-46	01-002B-2070		Switch Input Cable	스위치 입력 케이블(ZZ-022)	1	1	1	1	
O-47	02-008B-BT01		Step Motor Driving Cable	스텝모터 구동케이블(BT-014)	1	1	1	1	
O-48	02-010B-BT01		Servo Signar Cable	서보전류 제어신호케이블(BT-016)	1	1	1	1	
O-49	02-011B-BT01		Solenoid Power Cable	솔레노이드 전원 케이블(BT-018)	1	1	1	1	
O-50	01-009B-2070		Step Motor Power Cable	스텝모터 전원 케이블	1	1	1	1	
O-51	CA-003385-00		Servo Motor Driving Cable	서보모터 구동 케이블	1	1	1	1	
O-52	CA-003786-00		Fan Cable	냉각팬 케이블(ZZ-021)	1	1	1	1	



Q

Gauge Parts

게이지 관계

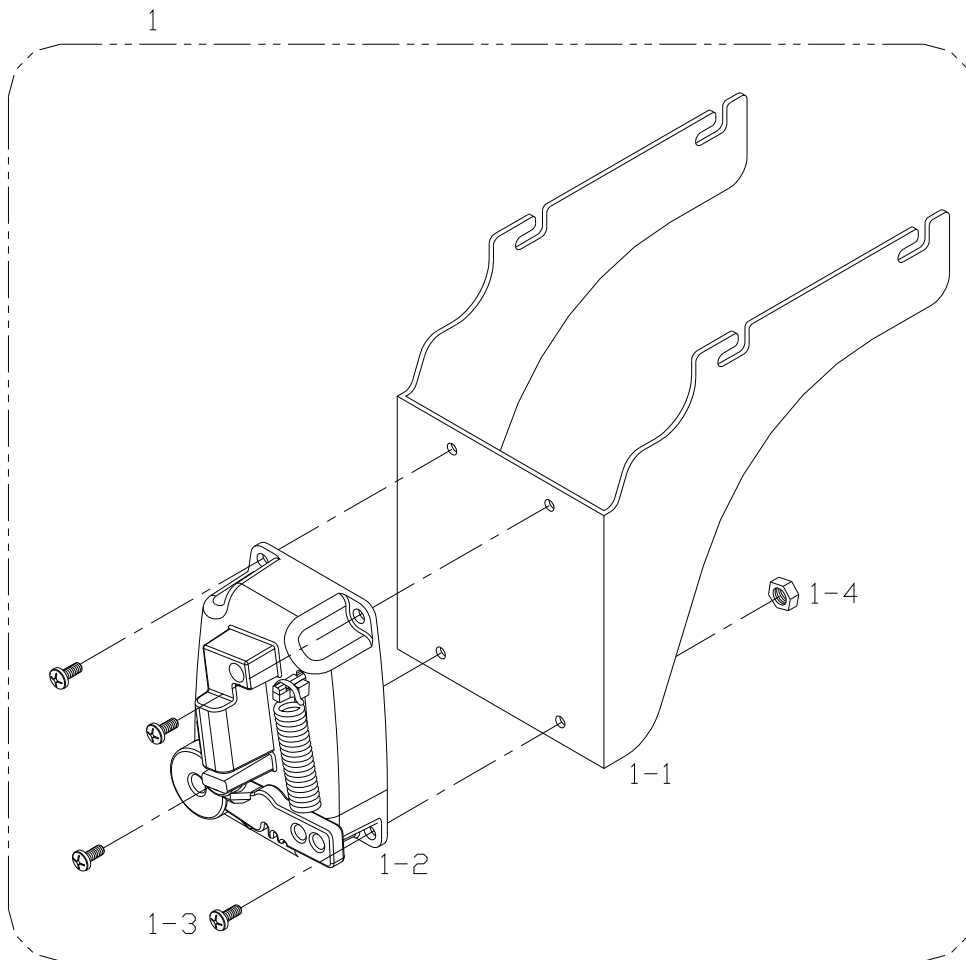
Zigzag Width (진폭)	Part Name (품명)			
	Needle Plate (침판)	Feed Dog (톱니)	Presser Foot (노루발)	Stopper (스토퍼)
10mm	<p>01-137A-2070</p>	<p>06-188A-207L Max. Stitch (최대진폭) : 2.5mm</p> <p>06-189A-207M Max. Stitch (최대진폭) : 5mm</p>	<p>05-117A-2070</p>	<p>04-009C-2070</p>
8mm	<p>01-037A-2070</p> <p>01-437A-2070</p>	<p>06-389A-207L Max. Stitch (최대진폭) : 2mm</p> <p>06-088A-207L Max. Stitch (최대진폭) : 2.5mm</p> <p>06-089A-207M Max. Stitch (최대진폭) : 5mm</p>	<p>05-017A-2070</p> <p>05-317A-2070</p> <p>05-817A-2070</p> <p>05-517A-2070</p>	<p>04-010C-2070</p>
5mm	<p>01-537A-2070</p>	<p>06-089A-207M Max. Stitch (최대진폭) : 5mm</p>	<p>05-617A-2070</p>	<p>04-011C-2070</p>

Zigzag Width (진폭)	Part Name (품명)			
	Needle Plate (침판)	Feed Dog (톱니)	Presser Foot (노루발)	Stopper (스토퍼)
5mm	<p>01-637A-2070</p> <p>01-237A-207L</p>	<p>06-488A-207L Max. Stitch (최대밈폭) : 2.5mm</p> <p>06-288A-207L Max. Stitch (최대밈폭) : 5mm</p>	<p>05-217A-2070</p>	
	<p>01-337A-207M</p>	<p>06-588A-207L Max. Stitch (최대밈폭) : 2.5mm</p> <p>06-289A-207M Max. Stitch (최대밈폭) : 5mm</p>	<p>05-917A-2070</p>	<p>04-011C-2070</p>
	<p>01-737A-2070</p>	<p>06-688A-207L Max. Stitch (최대밈폭) : 2.5mm</p> <p>06-389A-207M Max. Stitch (최대밈폭) : 5mm</p>	<p>05-717A-2070</p>	
3mm	—	—	—	<p>04-012C-2070</p>

R

Pedal Mechanism

페달 관계



Index

Parts No.	Name of Parts	Page	Ref.No.	Parts No.	Name of Parts	Page	Ref.No.	Parts No.	Name of Parts	Page	Ref.No.
01-001A-2070	Arm- Bed	7	A-2	02-008A-2070	Timing Belt (UNITA 600-5GT)	9	B-32	06-020A-2070	Feed Regulator Shaft	13	D-18
01-001M-PT02	Screw (M6×L45)	37	O-2	02-008B-BT01	Step Motor Driving Cable	37	O-47	06-020C-7400	E-Ring (φ6)	25	I-6
01-001R-BT10	Ending Bushing	37	O-34	02-010B-BT01	Servo Signar Cable	37	O-48	06-025R-2070	Reverse Lever Shaft Rubber Cap	13	D-23
01-001S-2070	Model Sticker	37	O-38	02-011B-BT01	Solenoid Power Cable	37	O-49	06-026A-Z001	Reverse Feed Solenoid Ass'y	31	L-12
01-001S-2070	Sticker Voltage Setting	37	O-35	02015SC-4113	Screw (M4, ℓ=10)	19	F-12	06-026P-1230	Feed Regulator Dial Pin	15	D-85
01-002B-2070	Switch Input Cable	37	O-46	02-016R-1230	O-Ring (P4)	11	C-13	06-027G-1230	Dial pin Spring	13	D-9
01-002M-AU12	Screw for Fan (M4×L35)	37	O-21	02-018A-2070	Pulley	9	B-40	06-031C-106L	Washer	13	D-19
01-003C-1230	Nail	35	N-18	02-019A-2070	Upper Shaft Bearing (R)	9	B-33	06-032C-106L	Cover for Reverse Lever Shaft	13	D-27
01-003M-PT01	Screw (M4×L16)	37	O-29	02-019W-1230	Washer	11	C-16	06-033M-3800	E-Ring(φ3)	23	H-27
01-003S-2070	Screw (M4×L8)	37	O-31	02-101A-2070	Upper Shaft	9	B-1	06-033M-7400	Felt for D-37	15	D-70
01-004A-2070	Transformer (110V)	37	O-11	02-103A-2070	Upper Shaft Collar (M)	9	B-28	06-033M-7400	Felt for E-27	17	E-29
01-004S-2070	Screw (M4×L6)	37	O-33	02-111A-2070	Upper Shaft Collar (R)	9	B-34	06-036C-2070	Reverse Lever Stopper	13	D-32
01-005A-2070	Bed Base (F)	7	A-3	02-120A-2070	Link Cam	9	B-2	06-045A-1067	Reverse Lever Connecting Bracket Support	31	L-9
01-005A-BH30	Heat Sink Main Motor Drive	37	O-28	02S003S-306H	Washer	19	F-39	06-046A-2070	Slider Shaft	13	D-40
01-005A-BT01	Fan	37	O-19	03-0000-BR00	Main Motor Drive	37	O-26	06-046W-1067	Washer	31	L-6
01-005B-2070	Bed Base (R)	7	A-4	04-0000-2070	Step Drive (Ass'y)	37	O-23	06-047C-2070	Guide Plate (A)	13	D-41
01-005M-2070	Face Plate Gasket	7	A-6	04-003S-2070	Screw	9	B-15	06-048C-2070	Guide Plate (B)	13	D-42
01-006A-2070	Pedal Bracket	41	R-1-1	04-009C-2070	Needle Bar Stopper (10mm)	35	N-43	06-056A-2070	Feed Cam Bearing	13	D-48
01-007A-2070	Face Plate	7	A-7	04-010C-2070	Needle Bar Stopper (8mm)	9	B-21	06-058C-2070	Cover for D-48	13	D-50
01-007A-BT01	Connector Cover	37	O-32	04-011C-2070	Needle Bar Stopper (5mm)	35	N-42	06-060S-2070	Stud Screw for D-38	13	D-52
01-008S-2070	Screw (9/64"n=40, ℓ=8)	23	H-7	04-012C-2070	Needle Bar Stopper (3mm)	35	N-41	06-063S-2070	Stud Screw for D-54	13	D-55
01-008S-2070	Screw (9/64"n=40, ℓ=8)	7	A-8	04-013A-2070	Needle Bar Stopper Plate	9	B-22	06-066C-2070	Feed Regulator Shaft Return Spring Holder	15	D-58
01-008S-2070	Screw (9/64"n=40, ℓ=8)	7	A-10	04-014S-2070	Screw (M4, ℓ=8)	9	B-23	06-068G-2070	Feed Regulator Shaft Return Spring	15	D-59
01-009A-2070	Face Plate Mes	7	A-9	04-017A-2070	Thread Guide for Needle Bar	9	B-26	06-069A-2070	Feed Rock Shaft Bushing (F)	15	D-60
01-009B-2070	Step Motor Power Cable	37	O-50	04-023C-SC53	QC Sticker	37	O-44	06-075A-2070	Collar for D-63	15	D-66
01-009R-2350	Cable Holder	19	F-22	04-101A-2070	Needle Bar	9	B-13	06-081A-2070	Feed Base	15	D-72
01-009R-2700	Cable Holder (6N)	7	A-48	04-102A-2070	Needle Bar Holder	9	B-14	06-083A-2077	Feed Base Connecting Rod	15	D-74
01-009R-2700	Hose Holder B	29	K-21	04-103R-9570	Rubber	29	K-36	06-084A-2070	Feed Base Connecting Rod	15	D-75
01-011C-2350	Cable Holder (5N)	7	A-47	04-104A-2070	Needle Bar Crank	9	B-16	06-088A-207L	Feed Dog (2.5mm)	15	D-79
01-013S-257A	Stud Screw for G-17	21	G-18	04-104R-1230	Rubber Cap for Arm Rear Part(S)	7	A-30	06-089A-207M	Feed Dog (5mm)	15	D-80
01-015C-2070	Face Plate Guard Cover	7	A-14	04-105A-2070	Needle Bar Holder Guide	9	B-17	06-090W-2070	Washer	15	D-81
01-016C-2070	Cover Window	7	A-15	04-106A-2070	Needle Bar Crank Guide	9	B-18	06-091M-2070	Felt for D-69	15	D-82
01-017W-1600	Washer	19	F-41	04-110A-106L	Needle Bar Crank Rod Bearing	9	B-43	06-092A-2070	Condense Regulator Rod	15	D-83
01-019S-2070	Stud Screw for A-14	7	A-18	05-0000-ZIZA	O/P Board	39	P-2	06-096A-2070	Reverse Lever Connecting Bracket (A)	31	L-3
01-021W-2070	Wave Washer	7	A-20	05-002A-9000	Heat Sink X-Y Drive	37	O-14	06-097A-2070	Reverse Lever Connecting Bracket (B)	31	L-4
01-022C-2070	Face Plate Guard Cover Stopper	7	A-21	05-002C-2500	Nut (9/16"n=20)	11	C-2	06-098A-2070	Reverse Lever Connecting Link	31	L-5
01-024M-207P	Rear Cover Gasket	7	A-23	05-002R-1230	Rubber Cap	11	C-39	06-102W-2350	Washer	11	C-7
01-025C-2070	Rear Cover	7	A-24	05-003A-XY10	Bracket for Heat Sink X-Y Drive	37	O-16	06-107A-2070	Reverse Feed Solenoid Bracket	31	L-13
01-026A-3800	Face Plate Thread Guide	7	A-12	05-004G-207M	Presser Spring (M)	11	C-4	06-114A-207L	Feed Regulator (L)	13	D-14
01-027M-2070	Top Cover Gasket	7	A-26	05-005C-2070	Presser Spring Rod	11	C-5	06-115A-207M	Feed Regulator (M)	13	D-15
01-028A-2070	Top Cover	7	A-27	05-010A-2070	Presser Bar Holder	11	C-10	06-118A-2070	Connecting Rod Shaft	13	D-17
01-030R-2070	Cable Holder Rubber	7	A-28	05-012A-2070	Presser Bar Lifting Cam Shaft	11	C-12	06-126A-2070	Reverse Lever Shaft	13	D-24
01-035P-1370	Machine Number Plate	7	A-44	05-014C-1230	E-Ring (φ4)	11	C-27	06-128A-106L	Reverse Lever Shaft Bushing (F)	13	D-21
01-035P-7400	Pin for A-44	7	A-45	05-014C-1230	E-Ring (φ4)	25	I-16	06-128A-2070	Feed Adjusting Lever	13	D-25
01-036S-1701	Tapping Screw (3×P1.6, L16)	39	P-4	05-017A-2070	Presser Foot (8mm)	11	C-17	06-138A-207L	Condense Regulator (L)	13	D-34
01-037S-2070	Screw	37	O-41	05-017G-2070	Presser Foot Stop Spring	11	C-17-3	06-139A-207M	Condense Regulator (M)	13	D-35
01-038A-2070	Auxiliary Plate	7	A-36	05-017S-2070	Screw (1/8 n=40, ℓ=10)	11	C-17-2	06-141P-2070	Eccentric Pin	13	D-36
01-038W-1230	Spring Washer	7	A-29	05-019A-2070	Spacer	11	C-19	06-143A-2070	Feed Regulator Shaft	13	D-37
01-040A-2077	Needle Plate Spacer	7	A-38	05-071C-2070	Finger Guard	11	C-17-1	06-144A-2070	Feed Regulator Shaft Connecting Rod	13	D-38
01-041A-2070	Slide Plate	7	A-39	05-106A-2070	Presser Bar	11	C-6	06-153A-2070	Feed Cam	13	D-46
01-042R-1230	Head Hinge Rubber	35	N-15	05-108A-2070	Presser Bar Bushing	11	C-8	06-157A-2070	Feed Cam Connecting Rod	13	D-49
01-042R-640L	Rubber Cap for Arm Rear Part (L)	7	A-32	06-001A-2070	Feed Regulator Dial Shaft	13	D-1	06-162A-2070	Feed Rock Crank	13	D-54
01-064S-2070	Screw (5/16"n=24)	7	A-52	06-001A-XY01	Fan Fix Bracket	37	O-45	06-170A-2070	Feed Rock Shaft Bushing (M)	15	D-61
01-106A-2070	Pedal Bracket Ass'y	41	R-1	06-002A-207L	Condense Regulator Dial Shaft (L)	13	D-2	06-171A-2070	Feed Rock Shaft Bushing (R)	15	D-62
01-112R-1230	Feed Rock Shaft Rubber Cap	15	D-65	06-003A-207M	Condense Regulator Dial Shaft (M)	13	D-3	06-172A-2070	Feed Rock Shaft	15	D-63
01-213R-1230	Head Support Rubber (B)	35	N-17	06-004A-207L	Feed Regulator Dial (L)	13	D-4	06-177A-2070	Feed Rocker Bracket	15	D-68
01-241R-1230	Head Support Rubber (A)	35	N-16	06-005A-207L	Condense Regulator Dial (L)	13	D-5	06-178A-2070	Feed Rocker Bracket Eccentric Shaft	15	D-69
01-437A-2070	Needle Plate(8mm)	7	A-35	06-006A-207M	Feed Regulator Dial (M)	13	D-6	06-382P-2070	Eccentric Pin for D-72	15	D-73
02-001B-2070	O/P Cable	39	P-5	06-007A-207M	Condense Regulator Dial (M)	13	D-7	07-001A-2070	Hook	17	E-36
02-004A-2070	Upper Shaft Bearing (M)	9	B-29	06-012A-2070	Feed Regulator Shaft Bushing	13	D-12	07-001A-2077	Hook	17	E-35
02-006A-2070	Upper Shaft Timing Pulley	9	B-30	06-016A-2070	Reverse Lever Shaft Bushing (R)	13	D-22	07-002A-2070	Bobbin Case	17	E-38
02-007C-2070	Side Ring	9	B-31	06-017A-2070	Feed Regulator Rod	13	D-16	07-002A-2077	Bobbin Case	17	E-37

Index

Parts No.	Name of Parts	Page	Ref.No.	Parts No.	Name of Parts	Page	Ref.No.	Parts No.	Name of Parts	Page	Ref.No.
40-204A-2350	Thread Adjusting Nut	21	G-7-9	91-001C-1230	Accessory Bag	35	N-1	GP-031776-00	Lower Shaft Bushing (F)	17	E-3
40-304A-1230	Thread Tension Adjusting Presser Plate	21	G-7-6	91-001C-2700	L-Wrench (2mm)	35	N-11	GP-032856-01	Sensor Bracket	19	F-26
40-404A-1230	Thread Tension Adjusting Shaft	21	G-7-3	91-001C-3800	L-Wrench (4mm)	35	N-8	GP-033214-00	Hook Shaft Bushing (F)	17	E-25
40-604S-1230	Screw	21	G-7-10	91-001C-BT10	Urethan Washer	37	O-39	GP-033340-00	Fixed Mes	25	I-39
40S026S-306H	Stud Screw for G-12	21	G-13	91-001C-PT10	Table Washer	37	O-40	GP-033353-00	Fixed Mes Clutch	25	I-41
43-001A-2070	Shaft for Presser Lifting Link	11	C-20	91-001M-120D	Caution Sticker	7	A-46	GP-034901-00	Oil Return Tube	19	F-38
43-001A-2500	Presser Bar Lifting Lever	11	C-14	91-002C-1230	Driver (L)	35	N-2	GP-034901-00	Oil Return Tube	29	K-6
43-002C-2070	O-Ring (P3)	11	C-21	91-002C-2700	L-Wrench (5mm)	35	N-7	GP-034901-00	Oil Return Tube	29	K-10
43-004A-2070	Thread Tension Release Plate	11	C-22	91-002S-3400	Screw (9/64" n=40, l=5.5)	35	N-22	GP-034901-00	Oil Return Tube	29	K-15
43-005A-2070	Tension Release Connecting Rod	11	C-23	91-003C-2700	L-Wrench (3mm)	35	N-9	GP-034901-00	Oil Return Tube	29	K-16
43-006S-2070	Stud Screw for C-23	11	C-24	91-004C-2700	L-Wrench (2.5mm)	35	N-10	GP-034901-00	Oil Return Tube	29	K-22
43-007A-1600	Control Body	35	N-30	91-005C-2070	Timming Gauge (A)	35	N-5	GP-034903-00	Oil Hose	29	K-14
43-008A-2070	Presser Lifting Link	11	C-26	91-008C-1230	Oil Can	35	N-13	GP-036832-00	Reverse Lever Return Spring	13	D-29
43-009C-1600	E-Ring (φ9)	27	J-6	91-011C-1230	Oilier	35	N-39	GP-037735-00	Wiper Solenoid Base	23	H-4
43-009C-1600	E-Ring(φ9)	35	N-35	91-012C-1230	Head Rest	35	N-40	GP-043678-00	Needle Bar Crank Guide	9	B-18
43-010A-1600	Knee Lifting Stick Support Cap	35	N-29	91-103C-1230	Driver (S, M)	35	N-3	PN-000590-00	Dial Pin	13	D-8
43-010G-2070	Spring for Lifting Link Shaft	11	C-28	91-108M-640L	Head Cover	35	N-12	PN-000695-00	Reverse Button Actuator Pin	27	J-5
43-011C-2070	Presser Lifting Link Connecting Bar	11	C-29	AS-007504-00	Mes Bracket Ass'y	25	I-58	RI-000021-02	O-Ring	13	D-10
43-012S-2070	Stud Screw for C-32	11	C-30	AS-009197-00	Bobbin Winder Ass'y	35	N-23	RI-000084-00	O-Ring	19	F-6
43-013A-2070	Knee Lifting Link	11	C-31	AS-015124-00	Arm·Bed	7	A-2	RI-000084-00	O-Ring (P5)	17	E-24
43-014A-2070	Knee Lifting Bar	11	C-32	BD-000236-01	Digital Board	37	O-24	RI-000108-00	E-Ring (φ8)	13	D-20
43-016G-2070	Spring for Link Stud	11	C-34	BD-000675-00	Power P.C.B (110V)	37	O-9	SC-000394-00	Screw	9	B-12
43-016S-640L	Stud Screw	31	L-7	BD-000675-00	Power P.C.B (220V)	37	O-9	SC-000577-00	Screw (11/64"n=40)	29	K-34
43-018C-2070	Control Body Shaft	35	N-36	BD-000685-01	Step Driver Board	37	O-13	SC-000683-00	Screw for Bracket (M4XL12)	37	O-17
43-024G-2070	Control Body Spring	35	N-34	BR-000129-00	Lower Shaft Bearing (R)	17	E-10	SC-000683-00	Screw (M4XL12)	37	O-15
43-027A-2070	Auto Presser Lifting Ball Joint Ass'y	33	M-4	BR-000129-00	Upper Shaft Bearing (F)	9	B-27	SC-000683-00	Screw for IPM (M4XL16)	37	O-30
43-028A-2070	Auto Presser Lifting Solenoid Ass'y	33	M-1	CA-003385-00	Servo Motor Driving Cable	37	O-51	SC-001176-00	Stud for Knee Lifting Link	11	C-33
43-031A-2070	Knee Lifting Pad Ass'y	35	N-37	CA-003786-00	Fan Cable	37	O-52	SC-0104-5607	Screw (11/64"n=40)	11	C-38
43-035S-2070	Adjusting Screw	11	C-36	CL-000327-00	Collar for	19	F-31	SC-0106-7400	Screw	35	N-33
43-036S-2070	Nut (M6)	11	C-37	GP-000729-00	Thread Tension Adjusting Body	21	G-7-1	SC-0108-2350	Screw (M6, l=18)	19	F-20
43-101A-1067	Knee Switch Ass'y	33	M-5	GP-000934-00	Thread Take Up Spring	21	G-7-2	SC-0108-2350	Screw (M6XP1)	31	L-10
44-0000-1230	Oil Wick	19	F-1-8	GP-000934-00	Thread Take Up Spring	35	N-45	SC-0110-1230	Screw (15/64"n=28, l=4.5)	15	D-64
44-0000-1230	Oil Wick	19	F-37	GP-001718-00	Felt	21	G-7-4	SC-0125-5607	Screw (3/32"n=56, l=2.2)	25	I-45
44-0000-1230	Oil Wick	29	K-5	GP-001733-00	Dust Protector	9	B-44	SC-0126-3800	Screw (3/32"n=56, l=8.4)	17	E-33
44-0000-1230	Oil Wick	29	K-9	GP-009241-00	Model Sticker (7L)	7	A-40	SC-0132-7500	Screw (M3XP0.5, l=3.8)	23	H-5
44-0000-1230	Oil Wick	29	K-28	GP-009246-00	Model Sticker (L)	7	A-41	SC-0138-3800	Screw (1/8"n=44, l=4)	23	H-15
44-001A-2070	Oil Window Oil Catcher	29	K-1	GP-009261-00	Model Sticker (7M)	7	A-42	SC-0150-2500	Screw (15/64"n=28, l=14.5)	9	B-41
44-001C-2070	Oil Gauge Window	29	K-2	GP-009262-00	Model Sticker (M)	7	A-43	SC-0152-1800	Screw (3/32"n=56, l=4.8)	25	I-46
44-002R-2500	O-Ring (G25)	29	K-3	GP-010957-00	Wiper Driving Notch	9	B-10	SC-0153-7400	Screw (1/4"n=40, l=8.5)	9	B-5
44-003M-1230	Oil Pan Gasket	35	N-25	GP-011049-00	Caution Sticker	37	O-37	SC-0153-7400	Screw (1/4"n=40, l=8.5)	17	E-6
44-005R-1230	O-Ring	35	N-28	GP-012781-01	Reverse Feed Lever	13	D-30	SC-0153-7400	Screw (1/4"n=40, l=8.5)	17	E-12
44-007C-2070	Oil Hose Holder for Face Plate	29	K-7	GP-013118-00	Thread Take Up Lever	9	B-6	SC-0162-5607	Screw (M5, l=12)	19	F-14
44-010C-1230	Magnetic	35	N-27	GP-013301-00	Face Plate Guard	7	A-13	SC-0164-2700	Screw (M5)	19	F-7
44-011C-2070	Oil Return Felt	29	K-11	GP-016940-02	Block For Adjusting Oil	29	K-32	SC-0164-2700	Screw (M5, l=5)	11	C-9
44-012C-2070	Oil Hose Holder	29	K-12	GP-017378-00	Fan Cover	37	O-20	SC-0164-2700	Screw (M5, l=5)	13	D-13
44-014C-2070	Oil Return Felt Holder	29	K-13	GP-018312-00	Cushion	21	G-25	SC-0173-1230	Screw (3/16"n=32)	9	B-39
44-018R-7500	Rubber Cap for Bed (S)	7	A-34	GP-018878-00	Motor Lever Shaft	19	F-15	SC-0173-1230	Screw (3/16"n=32)	31	L-14
44-019A-2070	Oil Filter Base	29	K-17	GP-019527-00	Hook Driving Shaft Bushing	17	E-18	SC-0173-1230	Screw (3/16"n=32, l=8.4)	31	L-1
44-020C-2070	Oil Filter	29	K-18	GP-019821-00	Lower Shaft	17	E-1	SC-0174-1230	Screw (11/64"n=40, l=11)	25	I-36
44-021A-2070	Oil Filter Base Bracket	29	K-19	GP-020482-00	Head Hinge	35	N-14	SC-0174-1230	Screw (11/64"n=40, l=8)	9	B-19
44-021R-7400	Rubber Cap for Arm Upper Part	7	A-31	GP-020935-01	Thread Pulling Wire Crank	23	H-13	SC-0174-1230	Screw (11/64"n=40, l=8)	9	B-20
44-026G-7400	Hose Holder A	29	K-20	GP-020944-00	Face Plate	7	A-5	SC-0175-1230	Screw (11/64"n=40, l=8)	19	F-35
44-029C-2070	Hook Shaft Pipe	29	K-23	GP-022204-00	Membrane S/W	39	P-3	SC-0178-7400	Screw (11/64"n=40)	27	J-8
44-030A-2070	Lubricator for Hook Shaft	29	K-24	GP-022624-00	Thread Stand Ass'y	35	N-38	SC-0179-3710	Screw (11/64"n=40)	7	A-16
44-032C-2070	Oil Cap	29	K-25	GP-022749-00	Control Box	37	O-1	SC-0179-3710	Screw (11/64"n=40)	11	C-11
44-033C-2070	Oil Supporting Cap	29	K-1-1	GP-022753-00	Side Cover	37	O-7	SC-0179-3710	Screw (11/64"n=40)	27	J-2
44-034G-2070	Adjusting Spring	29	K-27	GP-022754-00	Front Cover	37	O-5	SC-0179-3710	Screw (11/64"n=40, l=10)	15	D-71
44-038A-2070	Oil Pan	35	N-24	GP-022757-00	Transformer (220V)	37	O-11	SC-0183-2700	Screw (15/64"n=28)	9	B-3
44-134C-5700	Nipple	29	K-30	GP-025532-00	Rubber Bushing Cable Guide	27	J-11	SC-0183-2700	Screw (15/64"n=28, l=14)	25	I-26
46-002C-2070	Clip	39	P-7	GP-030307-00	Rubber for D-32	13	D-33	SC-0185-1230	Screw (3/16"n=32, l=10)	13	D-31
60-001A-2070	Belt Cover (A)	35	N-19	GP-030307-00	Stopper Rubber for G-17	21	G-24	SC-0188-1230	Screw (5/16"n=24)	9	B-42
60-002A-2070	Belt Cover (C)	35	N-20	GP-031267-00	Cover for Reverse Feed Solenoid	31	L-11	SC-0193-1230	Screw (3/16"n=28, l=12)	13	D-11

Index

Parts No.	Name of Parts	Page	Ref.No.	Parts No.	Name of Parts	Page	Ref.No.	Parts No.	Name of Parts	Page	Ref.No.
SC-0196-2700	Screw (M3×P0.5, ℓ=8)	25	I-27								
SC-0211-7500	Screw (M4, ℓ=8)	19	F-28								
SC-0211-7500	Screw (M4×P0.7, ℓ=8)	13	D-28								
SC-0253-7400	Screw (1/4"n=28, ℓ=20)	31	L-2								
SC-0307-1230	Screw	15	D-76								
SC-0315-2302	Screw (9/64"n=40, ℓ=9)	11	C-18								
SC-0317-2700	Screw (15/64"n=28, ℓ=7.5)	13	D-45								
SC-0339-1230	Presser Adjusting Screw	11	C-1								
SC-0343-3800	Screw (15/64"n=28, ℓ=17)	15	D-57								
SC-0346-2350	Bolt	33	M-3								
SC-0347-1230	Screw (M8×P1.25)	35	N-26								
SC-0361-1230	Screw (3/16"n=32, ℓ=18)	29	K-26								
SC-0365-3710	Screw (9/64"n=40, ℓ=5.5)	7	A-22								
SC-0365-3710	Screw (9/64"n=40, ℓ=5.5)	19	F-24								
SC-0365-3710	Screw (9/64"n=40, ℓ=5.5)	29	K-8								
SC-0497-1230	Screw (3/16"n=28, ℓ=12)	23	H-22								
SC-0498-3710	Screw (11/64"n=40)	7	A-25								
SC-0502-2302	Screw (9/64"n=40, ℓ=6)	25	I-18								
SC-0505-3710	Screw	21	G-4								
SC-0505-3710	Screw (9/64"n=40, ℓ=7)	9	B-9								
SC-0505-3710	Screw (9/64"n=40, ℓ=7)	7	A-37								
SC-0513-5050	Screw (1/8"n=44)	7	A-54								
SC-0528-1230	Screw (9/64"n=40, ℓ=10)	11	C-15								
SC-0533-3400	Screw (11/64"n=40)	35	N-21								
SC-0543-2302	Screw (11/64"n=40)	7	A-50								
SC-0543-2302	Screw (11/64"n=40, ℓ=6.5)	25	I-25								
SC-0543-2302	Screw (11/64"n=40, ℓ=7.4)	29	K-4								
SC-0543-2302	Screw (11/64"n=40, ℓ=8)	13	D-43								
SC-0546-1230	Screw	35	N-31								
SC-A117-4417	Screw (1/4"n=40, ℓ=8.5)	13	D-47								
SC-A131-4522	Screw (1/8"n=44)	7	A-17								
SC-A131-4522	Screw (1/8"n=44, ℓ=5.5)	9	B-25								
SC-A156-4118	Plus Minus Round Head Screw	25	I-57								
SC-A170-4124	Screw (9/64"n=40, ℓ=8)	17	E-41								
SC-A174-4122	Screw (11/64"n=40, ℓ=11)	21	G-11								
SC-A174-4122	Slot Head Screw	7	A-56								
SC-A297-4118	Screw (1/8"n=40, ℓ=6)	15	D-78								
SC-A301-4119	Screw (9/64"n=40)	13	D-51								
SC-A306-4113	Screw (1/8"n=44, ℓ=8)	15	D-84								
SC-A308-4517	Screw (1/4"n=40, ℓ=6)	9	B-4								
SC-A308-4517	Screw (1/4"n=40, ℓ=6)	13	D-26								
SC-A308-4517	Screw (1/4"n=40, ℓ=6)	17	E-11								
SC-A550-4517	Hex Set Screw	15	D-67								
SC-A550-4517	Hex Set Screw	17	E-8								
SN-0101-1600	Nut (11/64"n=40)	21	G-23								
SN-0101-1600	Nut (11/64"n=40)	25	I-50								
SN-0101-1600	Nut (11/64"n=40)	29	K-31								
SN-0101-7400	Nut (11/64"n=40)	11	C-35								
SN-0105-3400	Nut	31	L-8								
SN-0105-3400	Nut	35	N-32								
SN-0105-3400	Nut (15/64"n=28)	13	D-53								
SN-0105-3400	Nut (15/64"n=28)	25	I-5								
SN-0107-1230	Nut (9/32"n=28)	13	D-56								
SN-0112-1230	Nut(M8×1.25)	7	A-51								
SN-0115-7400	Nut (3/16"n=32)	25	I-22								
SN-0121-7400	Nut	21	G-2								
SPS-2070-OP	O/P Box (Ass'y)	39	P-1								
WS-000260-01	Hinge Washer	23	H-10								
	Needle (SCHMETZ SY1965Nm10)	35	N-4								
	Needle (SY1965 Nm70/10)	9	B-24								
	Thread Guide Disc	21	G-5-2								