



PARTS BOOK

KM-360J-7

High Speed 1-Needle,
Needle Feed Bottom Hemming
Sewing Machine

PME-100118

Information

A. Parts Book 구성

Structure of Part Book

① **A** Arm, Bed & Machine Body Mechanism
팔, 침대 및 의장품 관계

②

③

④

⑤

⑥

⑦

⑧

⑨

Ref. No.	Parts No.	Note	Name of Parts	품명	Q'ty	Assembly No.
A-1	0P-01284(-03)		Arm	팔	1	
A-2	0P-01007(-06)		Bed	침대	1	
A-4	0P-01010(-00)		Face Plate	면판	1	
A-5	01-00044(-10H)		Face Plate Gasket	면판 가스켓	1	
A-6	01-01174(-4122)		Screw(L) 084*mm(2)	볼트	10	
A-7	01-11010(-123D)		Rubber Cap For Face Plate	면판 고무뚜껑	2	
A-9	01-00194(-120D)		Caution S/Screw	경고 스크류	1	
A-8	0P-01017(-00)		Thermap Layer Cover	발열기 피막	1	
A-10	01-02010(-04*mm(2))		Screw(S) 084*mm(2)	볼트(S) 084*mm(2)	1	
A-11	0P-01174(-00)		Bed Cover(L)	침대 커버(좌)	1	
A-12	01-01444(-120H)		Bed Cover (Gasket,L)	침대 커버 가스켓(좌)	1	
A-13	01-02643(-120D)		Screw(L) 084*mm(2)	볼트(L) 084*mm(2)	14	
A-13-1	4B-02444(-100D)		Washer	와셔	2	
A-14	0P-01174(-00)		Bed Cover(R)	침대 커버(우)	1	
A-15	01-01744(-120H)		Bed Cover (Gasket,R)	침대 커버 가스켓(우)	1	
A-16	4402011(-100H)		Tank Rubber Cap	고유 탱크 고무뚜껑	1	
A-17	01-00774(-123D)		Thread (Slide with Three Poles)	세우름 슬라이드(3극)	15Set	
A-19	01-02010(-120D)		Thread (Slide(L))	면판 슬라이드(좌)	1	
A-20	01-02010(-120D)		Thread (Slide(R))	면판 슬라이드(우)	1	
A-21	01-01000(-123D)		Thread (Slide(S))	면판 슬라이드(중)	1	
A-22	0P-01643(-00)		Arm Thread Guide Assy	팔용 슬라이드 가이드(조)	1	
A-23	11-01710(-700D)		Nut	너트	1	
A-24	01-02010(-120H)		Thread (Slide(S))	면판 슬라이드(중)	1	
A-25	0102070(-100H)		Silicon Tank Assy	실리콘 탱크 조립체(조)	15Set	
A-26	0102060(-100H)		Silicon Tank	실리콘 탱크	1	
A-27	0102060(-100H)		Silicon Oil Window	실리콘 유창	1	
A-28	0102400(-100H)		Silicon Part	실리콘 부품	1	
A-29	0P-01300(-00)		Part for Silicon Oil Supply	실리콘 공급 부품 조립체	1	
A-30	01-01643(-100H)		Screw(L) 084*mm(2)	볼트(L)	1	
A-31	04-02410(-123D)		Arm Upper Part Rubber Cap	팔용 상부 고무 뚜껑	2	
A-33	04-02010(-100H)		Needle Bar Rubber Cap	바늘봉 고무 뚜껑	1	
A-34	01-04210(-442L)		Rubber Cap(L)	고유 고무뚜껑(좌)	4	
A-35	44-02110(-740D)		Rubber Cap(R)	고유 고무뚜껑(우)	7	
A-36	01-01710(-100H)		Bed Rubber	침대 고무	1	
A-37	0P-01281(-00)		Welder (Sticker(H))	인쇄 스티커(수평)	1	
A-38	0P-01281(-00)		M Welder (Sticker(M))	인쇄 스티커(수직)	1	
A-39	0P-01281(-00)		L Welder (Sticker(L))	인쇄 스티커(수직)	1	
A-40	0P-01281(-00)		K Welder (Sticker(K))	인쇄 스티커(수직)	1	
A-41	01-01110(-120D)		Tap Cover	타프 커버	2	
A-42	01-0514(-120H)		Tap Cover	타프 커버	1	
A-43	41-014(-100H)		Silicon Winder Assy	실리콘(조)	15Set	
A-44	4102010(-100H)		Silicon Winder (Base Assy)	실리콘 베이스(조)	1	
A-45	41-0205A(-120H)		Silicon Winder (Shaft)	실리콘 구동축	1	
A-46	0P-01000(-00)	S. Other	Sticker(S)	인쇄 스티커(수직)	1	
A-47	01-01010(-700D)		Screw(S)	볼트(S)	1	
A-48	4102000(-100H)		Silicon Winder	실리콘(회동)	1	
A-49	01-0104(-550T)		Screw(L) 084*mm(2)	볼트(L)	2	
A-50	4102000(-100H)		Silicon Winder Action Ring	실리콘 작동링	1	
A-51	4102000(-100H)		Silicon Winder Shaft Rubber Ring	실리콘 구동축 고무링	1	
A-52	4102100(-100H)		Silicon Winder Spring	실리콘 스프링	1	
A-53	4102110(-100H)		Silicon Winder Adjusting Plate	실리콘 조정판	1	
A-54	01-01100(-123D)		Screw(L) 084*mm(2)	볼트(L)	1	
A-55	01-01194(-120D)		Washer	와셔	1	
A-56	4102110(-100H)		Silicon Winder Lower Shaft	실리콘 하부 축	1	
A-57	4102140(-100H)		Silicon Winder Adjusting Term	실리콘 조정판	1	
A-58	0102150(-4113)		Screw(M) 084*mm(2)	볼트(M)	1	

Note: P=Heavy Material(중량재), M=Medium Material(중량재), H=Plastic Heavy Material(중량재)
L=Light Material(저중량재), K=Soft Material(부드러운), EL=Large Shruble Piece(대시틀 부품)

①:관계 별 고유 코드

Unique code by mechanism

②:관계 별 고유 명칭

Unique name by mechanism

③:관계도

Explode view

④Ref.No.:파트별 고유 식별 번호

Unique identification number by part

⑤Parts No.:고유 제품 코드

Unique Product code

Ex)

구분 Category	Code	비고 remarks
구 부품 Old part	01-030C-1230	
신 부품 New Part	AS-000000-00	조(組) 파트 Set parts
	GP-000000-00	기구적 파트 Instrumental parts
	EP-000000-00	전기적 파트 Electrical parts

⑥Note:공지사항 표기 및 메모

Refers to notice and memo

⑦품명

명:파트의 고유 품명

Name of Part:Unique name of parts

⑧Q'ty :파트의 수량

The number of parts

⑨Assembly no.:조(組) 파트의 식별 번호

Unique identification number by set part

Warning

1. 조에 속한 파트는 개별 조립 시 제품의 파손 또는 재봉 불량일 수 있어 해당 파트에 대한 주문 시에는 조 품목으로만 구입이 가능합니다.
2. 본 책자는 Parts Book으로 제작되었으므로 매뉴얼로 사용 불가합니다.
3. 사전 예고 없이 사양이 변경 될 수도 있습니다.

1. The parts classified as ass'y items may cause damage to the machine or bad sewing when they are separately assembled. Hence, when they are ordered, they can be purchased as ass'y items only.
2. This is a parts book. It cannot be used as a manual.
3. Parts are Subject to change in Design Without Prior Notice.

CONTENTS

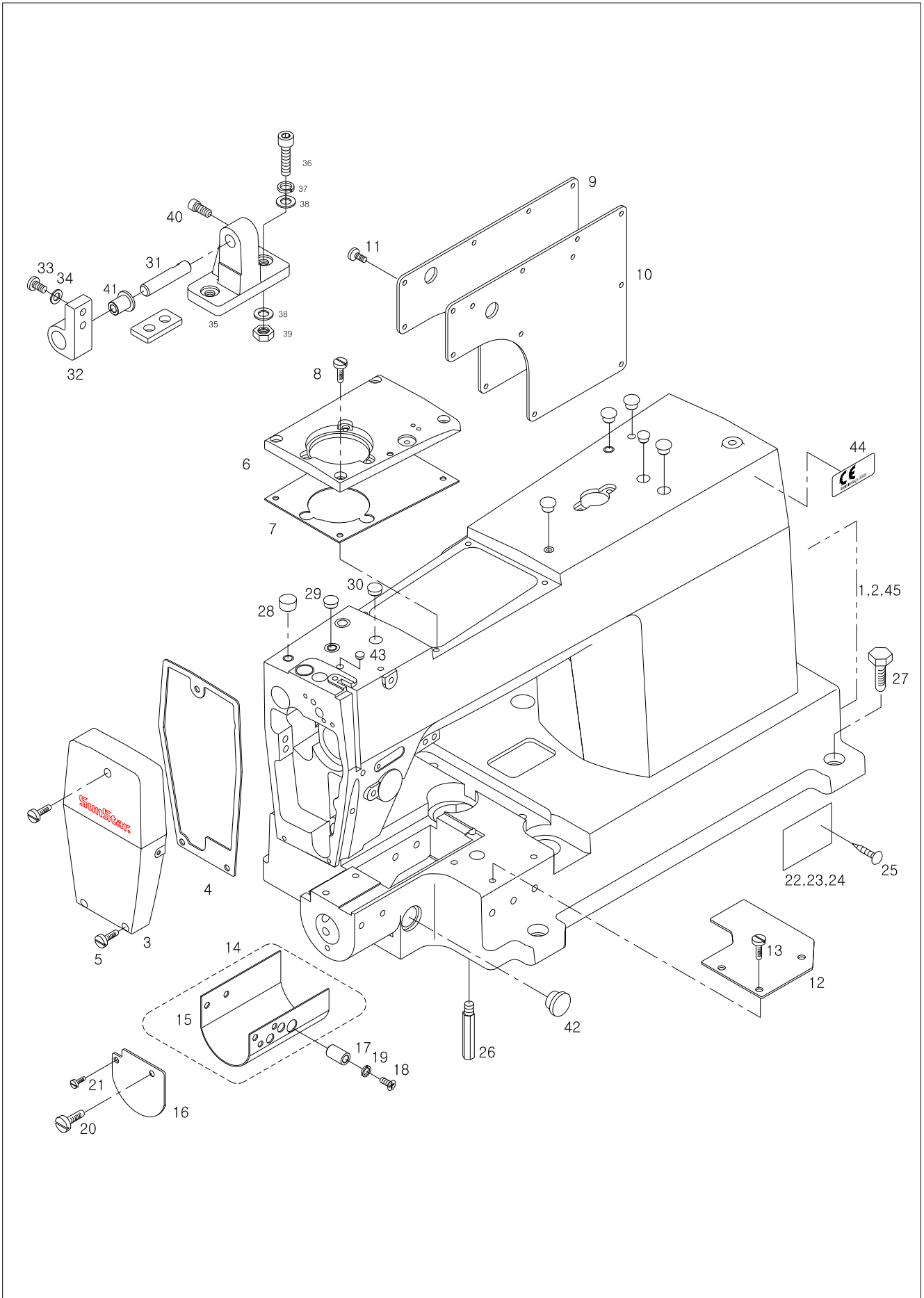
목 차

A	Machine Body Mechanism 두부외장 관계	6
B	Upper Shaft Mechanism 상축 관계	8
C	Needle Bar Mechanism 바늘대 관계	12
D	Presser Foot Mechanism 노루발 관계	16
E	Feed Mechanism 피이드 관계	20
F	Lower Shaft & Upright Shaft Mechanism 하축 및 입축 관계	24
G	Thread Trimmer Mechanism 사절 관계	26
H	Wiper Mechanism 와이퍼 관계	30
I	Hemmer Mechanism 해머 관계	32
J	Air Pressure Mechanism 공압 관계	34
K	Bobbin Winder Mechanism 실감기 관계	36
L	Thread Tension Adjusting Mechanism 실장력 조절 관계	38
M	Lubrication Mechanism 급유 관계	40
N	Accessories Mechanism 액세서리 관계	42
	Index 인덱스	44

A

Machine Body Mechanism

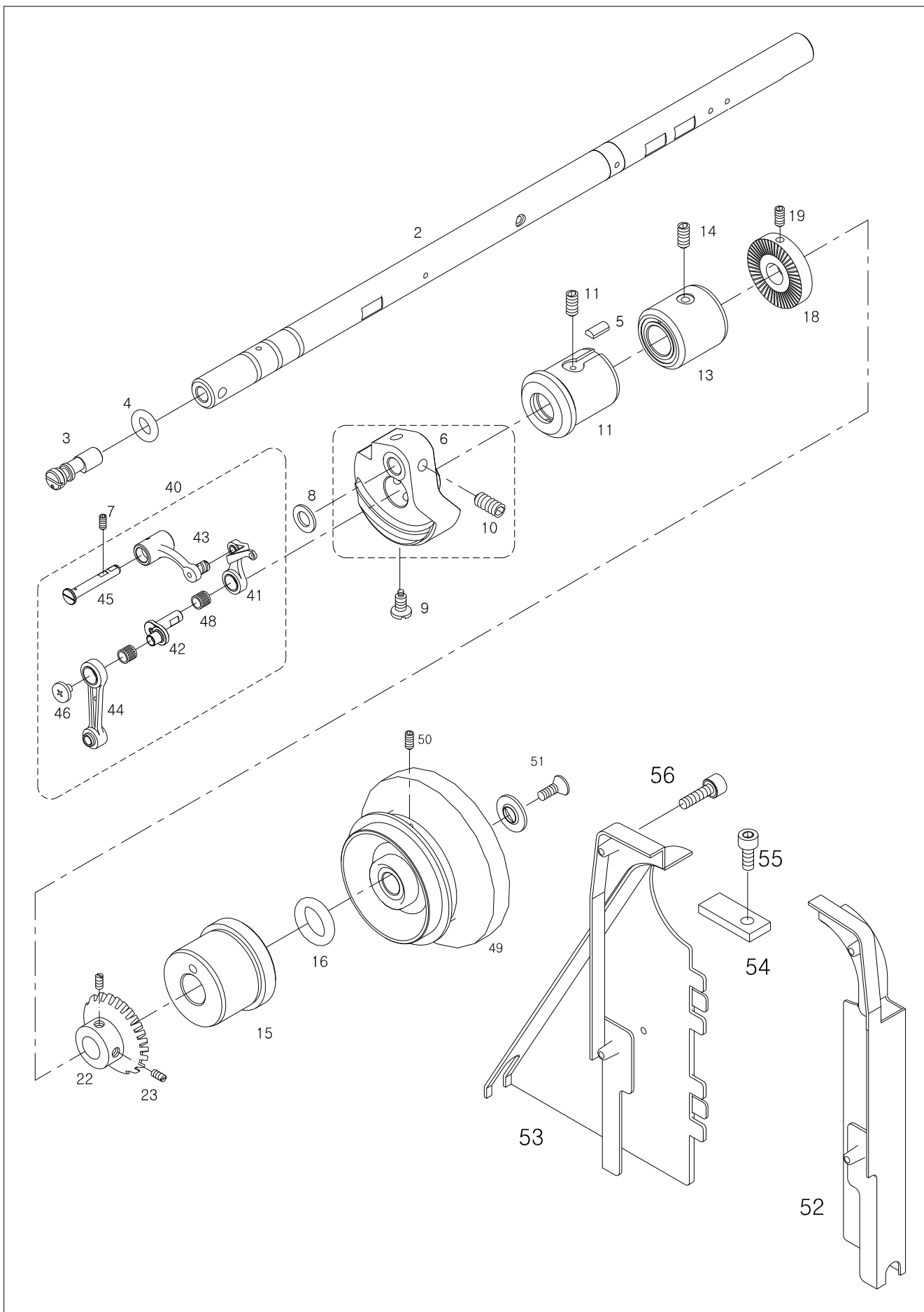
외장 관계



B

Upper Shaft Mechanism (Mechanical None-Trimming)

상축 관계 (기계식 비사절)



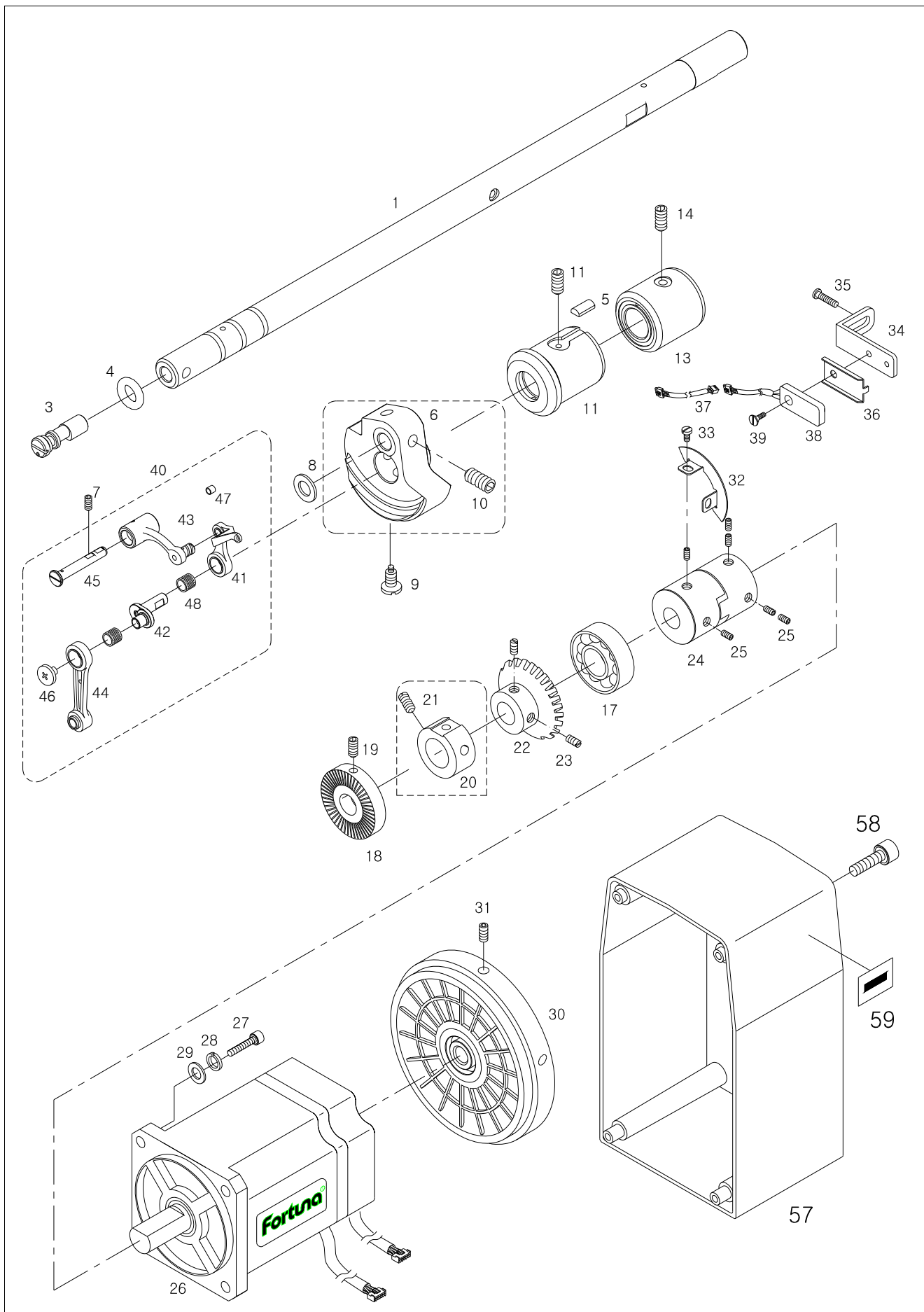


Ref. No.	Parts No.	Note	Name of Parts	품명	Q'ty			Assembly No.
					M	7M	7E	
B-1	GP-026451-03		Upper shaft	상축(전자식)		1	1	
B-2	GP-023708-02		Upper shaft	상축(기계식)	1			
B-3	02-115C-2500		Oil Adjusting Pin for Upper Shaft	상축 유량 조절핀	1	1	1	
B-4	02-016R-1230		O-Ring For Upper Shaft	상축 유량 조절핀 O-링	1	1	1	
B-5	02-020M-1230		Upper Shaft Felt	상축 헬트	1	1	1	
B-6	GP-021784-01		Link Cam	링크캠	1	1	1	
B-7	SC-0317-2700		Screw	캠접촉 안내 고정나사	2	2	2	
B-8	02-003W-300G		Link Cam Washer	링크캠 와셔	1	1	1	
B-9	SC-0123-1230		Screw	침나사 (9/32" n=28)	1	1	1	
B-10	SC-0124-7400		Screw	침나사 (9/32" n=28)	1	1	1	
B-11	GP-016316-01		Upper Shaft Bushing(F)	상축전봇싱	1	1	1	
B-12	SC-0507-1230		Screw	침나사 (15/64" n=28)	1	1	1	
B-13	GP-016317-01		Upper shaft Bushing(M)	상축중봇싱	1	1	1	
B-14	SC-0317-2700		Screw	캠접촉 안내 고정나사	1	1	1	
B-15	02-106A-257B		Upper shaft Bushing(R)	상축후봇싱	1			
B-16	02-028C-1230		Oil Seal for Upper shaft Bushing(R)	상축후봇싱 오일씰	1			
B-17	02-016A-120D		Bearing	상축 후베어링(6302ZZNR)		1	1	
B-18	GP-016301-00		Bobbin Winder Driving Wheel	실감기구동휠	1	1	1	
B-19	02023SC-7113		Screw	침나사 (M5×P0.8)	2	2	2	
B-20	02-121A-1230		Upper Shaft Collar	상축 카라		1	1	
B-21	SC-308-2700		Screw	육각 구멍 볼이 멈춤나사		2	2	
B-22	02-211A-1230		Upper Shaft Gear	상축 기어	1	1	1	
B-23	02-106L-1230		Screw	홈볼이 멈춤나사(1/4" n=40)	2	2	2	
B-24	GP-002028-00		Coupling	커플링		1	1	
B-25	08037SC-120D		Screw	침나사 (M6×P1.0)		6	6	
B-26	SFAM-600-002		Motor-Hollow	모터		1	1	
B-27	02-020S-120D		Screw [M5, L=25]	침나사 (M5×P0.8)		4	4	
B-28	07-011W-1230		Spring Washer	스프링 와셔		4	4	
B-29	10-020W-2700		Washer	와셔		4	4	
B-30	GP-028094-02		Pulley	폴리		1	1	
B-31	SC-0317-2700		Screw [15/64" n=28, L=7.5]	캠접촉 안내 고정나사		4	4	
B-32	GP-000835-02		Sync. Sensor Slit	센서 감지판		1	1	
B-33	SC-000078-00		Screw	침나사 (M6×P1.0)		2	2	
B-34	GP-016577-01		Sensor Base	센서베이스		1	1	
B-35	SC-0523-1230		Screw	침나사 (3/16" n=28)		2	2	
B-36	GP-035856-01		Sensor Bracket	센서 브라켓		1	1	
B-37	CA-002735-00		Cable	싱크로 연결 케이블		1	1	
B-38	46-002A-2300		Sensor Ass'y	센서(조)		1	1	
B-39	03010MC-4135		Screw [M3, L=10]	침나사 (M3×P0.5)		1	1	
B-40	AS-006059-00		Thread Take-up Lever Ass'y	실채기(조)	1	1	1	
B-41	08-102A-146L		Thread Take-up	실채기	1	1	1	
B-42	08-502A-146L		Needle Bar Crank	바늘대 크랭크	1	1	1	
B-43	08-503A-146L		Thread Take-up Crank	실채기 크랭크	1	1	1	
B-44	08-504A-146L		Needle Bar Crank Rod	바늘대 크랭크로드	1	1	1	
B-45	08-506P-123A		Thread Take Up Pin	실채기 핀	1	1	1	
B-46	08-507S-123A		Screw [9/64" n=40]	바늘대 크랭크 원나사	1	1	1	
B-47	08-509R-250A		Oil Protection	오일막이	1	1	1	
B-48	08-511A-123A		Thread Take Up Needle Bearing	실채기 니들 베어링	1	1	1	
B-49	GP-032431-01		Pulley	폴리(기계식)	1			
B-50	SC-0150-2500		Screw(15/64"n=28)	폴리 고정나사(15/64" n=28)	2			
B-51	SC-0188-1230		Screw(5/16"n=24)	폴리 큰나사(5/16" n=24)	1			
B-52	GP-025009-00		Belt Cover A	벨트커버(A)	1			
B-53	GP-025011-00		Belt Cover B	벨트커버(B)	1			
B-54	GP-025102-00		Belt Cover Insesrt	벨트커버 인서트	1			
B-55			Screw	침나사	1			
B-56	SC-0498-3710		Screw	침나사(11/64" n=40)	4			

B

Upper Shaft Mechanism (Mechanical Automatic Trimming)

상축 관계 (기계식 사절)



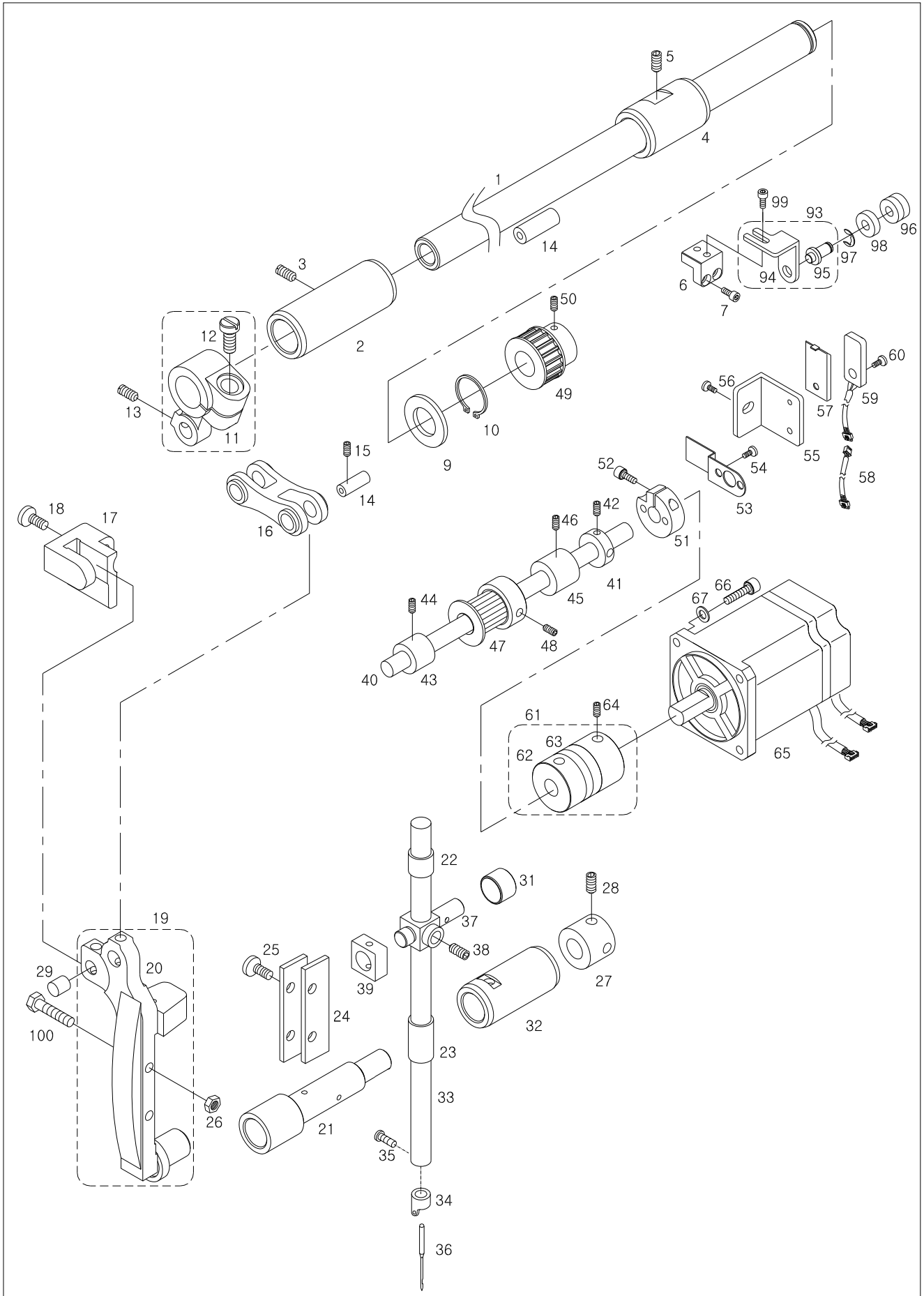


Ref. No.	Parts No.	Note	Name of Parts	품 명	Q'ty			Assembly No.
					M	7M	7E	
C-1	GP-021399-02		Needle Feed Shaft	바늘피이드축	1	1	1	
C-2	GP-016322-00		Needle Feed Shaft Bushing(F)	바늘 피이드 축 전봇싱	1	1	1	
C-3	SC-0317-2700		Screw	캠접축 안내 고정나사	1	1	1	
C-4	GP-016323-00		Needle Feed Shaft Bushing(R)	바늘 피이드 축 후봇싱	1	1	1	
C-5	SC-0317-2700		Screw	캠접축 안내 고정나사	1	1	1	
C-6	GP-021894-00		Idler Bracket	아이들러 브라켓			1	
C-7			Screw	아이들러 브라켓 고정나사(11/64" n=40)			2	
C-9	WS-000214-00		Needle Feed Shaft Washer	바늘피이드축 와셔	1	1	1	
C-10	13-021C-5300		C-Ring	C형 멈춤링(STW-12)	1	1	1	
C-11	GP-019920-00		Needle Feed Arm	바늘피이드암	1	1	1	
C-12	SC-0183-2700		Screw	베이스 고정 나사 B	1	1	1	
C-13	SC-0164-2700		Screw	침나사(M5XP0.8)	1	1	1	
C-14	GP-023671-00		Stud	바늘 피이드 축암 스톨드	1	1	2	
C-15	SC-0104-567		Screw	하축중 베어링 봇싱 나사	1	1	1	
C-16	GP-019933-00		Needle Feed Link	바늘 피이드링크	1	1	1	
C-17	GP-019932-00		Needle Frame Guide	바늘대 프레임 가이드	1	1	1	
C-18	SC-0305-5607		Screw	침나사(3/16" n=32)	2	2	2	
C-19	AS-005143-01		Needle Frame Ass'y	바늘대 프레임(조)	1	1	1	
C-20	GP-019942-02		Needle Frame	바늘대 프레임	1	1	1	
C-21	GP-019934-00		Needle Frame Shaft	바늘대 프레임 축	1	1	1	
C-22	GP-019915-01		Needle Bar Bushing(U)	바늘대 상봇싱	1	1	1	
C-23	GP-019916-01		Needle Bar Bushing(L)	바늘대 하봇싱	1	1	1	
C-24	GP-019931-01		Needle Bar Guide Plate	바늘대 안내판	2	2	2	
C-25	SC-000659-00		Screw	바늘대 안내판 침나사(9/64" n=40)	2	2	2	
C-26	11-017C-7507		Nut	너트(9/64" n=40)	2	2	2	
C-27	CL-000136-00		Needle Bar Frame Shaft Collar	바늘대프레임축카라	1	1	1	
C-28	SC-0105-7500		Screw	동메스 축 카라 고정 나사	2	2	2	
C-29	PN-000311-01		Needle Frame Pin	바늘대 프레임 핀	1	1	1	
C-31	GP-016412-01		Needle Bar Guide Bushing	바늘대 가이드 봇싱		1	1	
C-32	GP-016321-00		Needle Bar Frame Shaft Bushing	바늘대 프레임 축 봇싱		1	1	
C-33	GP-028565-01		Needle Bar	바늘대	1	1	1	
C-34	GP-029927-00		Needle Bar Thread Guide	바늘대 실겔이		1	1	
C-35	SC-A131-4522		Screw	침나사(1/8" n=44)		1	1	
C-36			Needle	바늘(DP×5 SERV7 110)	1	1	1	
C-37	GP-019925-00		Needle Clamp	바늘대 클램프	1	1	1	
C-38	SC-0164-2700		Screw	캠접축 카라 고정 나사	1	1	1	
C-39	GP-019913-00		Needle Bar Guide Slide Block	바늘대 안내 슬라이드 블록	1	1	1	
C-40	GP-021384-00		Needle Feed Driven Shaft	바늘피이드 구동축			1	
C-41	10S114S-306H		Needle Feed Driven Shaft Collar	바늘피이드 구동축 카라			1	
C-42	SC-0164-2700		Screw	침나사(M5×P0.8)			2	
C-43	GP-021394-00		Needle Feed Driven Shaft Bushing(F)	바늘피이드 구동축 전봇싱			1	
C-44	SC-0507-1230		Screw	침나사 (15/64" n=28)			1	
C-45	GP-021396-00		Needle Feed Driven Shaft Bushing(R)	바늘피이드 구동축 후봇싱			1	
C-46	SC-0507-1230		Screw	침나사 (15/64" n=28)			1	
C-47	GP-021603-00		Needle Feed Driven Pulley	바늘피이드 구동풀리			1	
C-48	SC-0164-2700		Screw	침나사(M5×P0.8)			2	
C-49	GP-021605-00		Needle Feed Moving Pulley	바늘피이드 종동풀리				
C-50	SC-0164-2700		Screw	침나사(M5×P0.8)			2	
C-51	CL-000124-00		Needle Feed Sosor Slit Collar	바늘피이드 센서 감지판 카라			1	
C-52	SC-0164-2700		Screw	침나사(M5×P0.8)			2	
C-53	GP-021701-00		Needle Feed Sosor Slit	바늘피이드 센서 감지판			1	
C-54	SC-0512-1230		Screw	침나사(9/64" n=40)			2	
C-55	GP-021703-00		Needle Feed Sosor Setting Plate	바늘피이드 센서 고정판			1	
C-56	SC-0543-2302		Screw	침나사 (11/64" n=40)			1	
C-57	15-028C-2070		Sensor Bracket	센서 브라켓			1	
C-58	CA-002674-00		Cable	바늘대요동 센서 연결케이블			1	

C

Needle Bar Mechanism (Electronic)

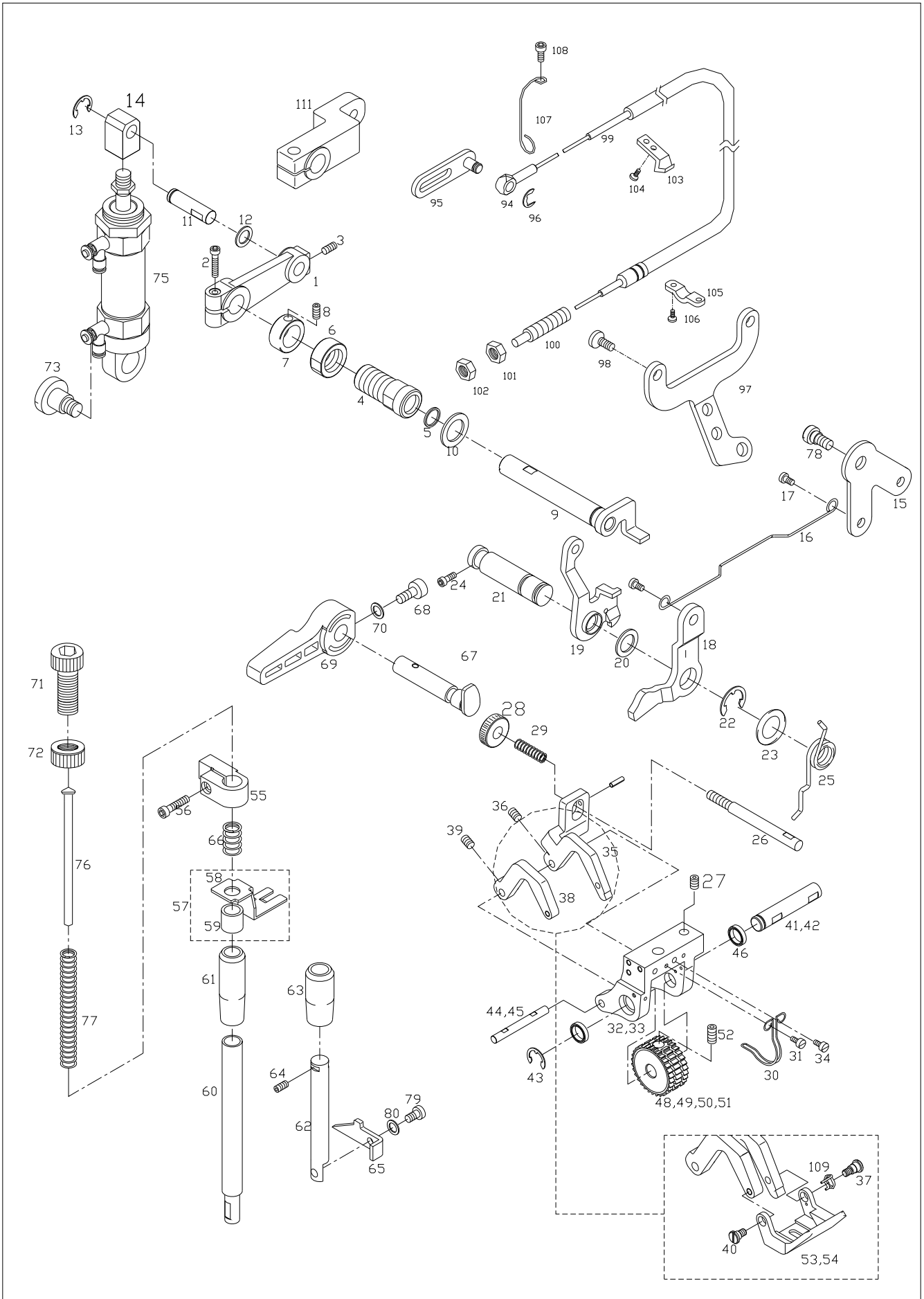
바늘대 관계 (전자식)



D

Presser Foot Mechanism

노루발 관계



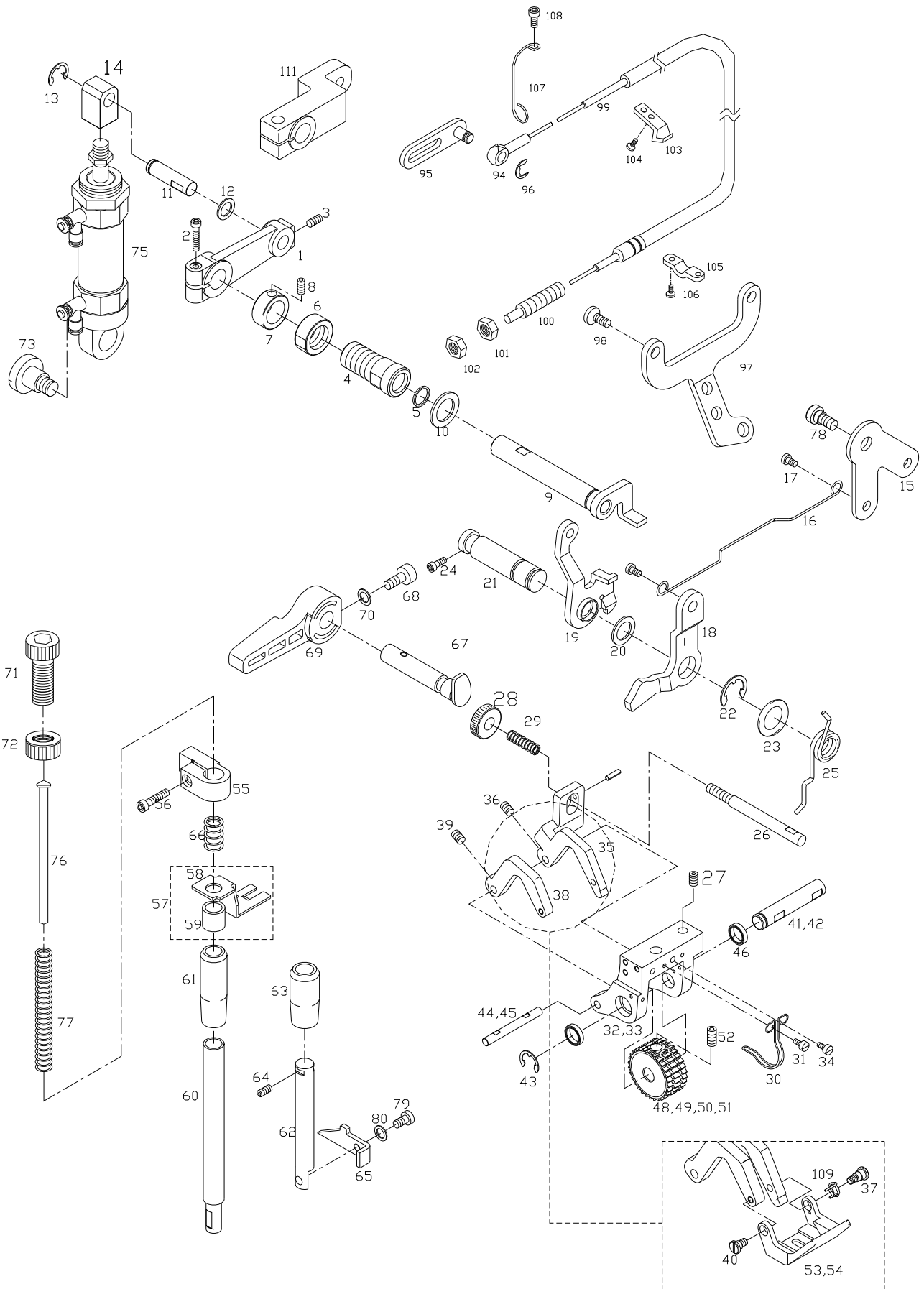


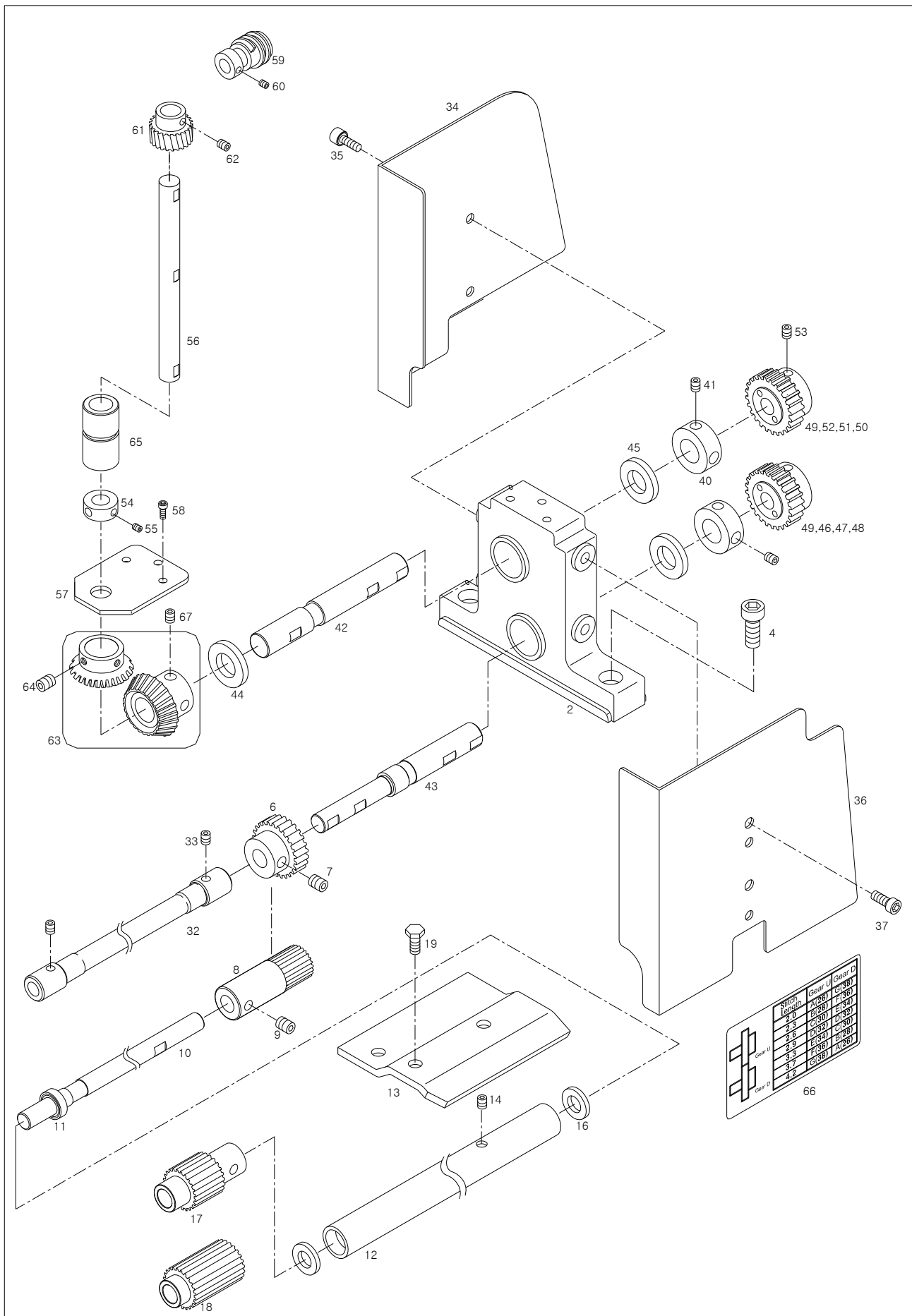
Ref. No.	Parts No.	Note	Name of Parts	품명	Q'ty			Assembly No.
					M	7M	7E	
D-1	GP-020923-01		Knee Lifter Connecting Crank	무릎올림 연결 크랭크		1	1	
D-2	01S112S-306H		Screw	침나사(M5×P0.8)	1	1	1	
D-3	SC-0104-5607		Screw	침나사(11/64" n=40)	1	1	1	
D-4	GP-016479-00		Auto Knee Lifter Shaft Bushing	자동 무릎올림축보싱	1	1	1	
D-5	43-016R-257A		Oil Seal	오일셀	1	1	1	
D-6	43-017C-257A		Auto Knee Lifter Shaft Nut	자동 무릎올림축너트	1	1	1	
D-7	43-021A-257A		Auto Knee Lifter Shaft Collar	자동 무릎올림축카라	1	1	1	
D-8	SC-0104-5607		Screw	하축 중 베어링 보싱 나사	2	2	2	
D-9	AS-005250-00		Knee Lifter Lever Shaft Ass'y	무릎올림 레버 축(조)	1	1	1	
D-10	06-021W-7400		Washer	와셔	1	2	2	
D-11	GP-020925-00		Knee Lifter Connecting Crank Shaft	무릎올림 연결 크랭크 축	1	1	1	
D-12	WS-000213-00		Knee Lifter Connecting Crank Shaft Washer	무릎올림연결 크랭크 축 와셔	1	1	1	
D-13	22-012C-5030		E-Ring	E형 멈춤링(ETW-5)	1	1	1	
D-14	GP-020921-00		Knee Lifter Connecting Crank Shaft End	무릎올림 연결 크랭크 축 엔드	1	1	1	
D-15	GP-020559-00		Knee Lifter Lever	무릎올림 레버	1	1	1	
D-16	GP-016480-00		Presser Lifter Connecting Bar	누름대 올리기 연결봉	1	1	1	
D-17	SC-000650-00		Presser Lifter Connecting Bar Stud	누름대 올리기 연결봉 단나사	2	2	2	
D-18	GP-020560-00		Presser Lifter Lever	누름대 올림 레버	1	1	1	
D-19	AS-005201-00		Tension Release Plate Ass'y	실닛추기판(조)	1	1	1	
D-20	WS-000216-00		Tension Release Plate Ass'y Washer	실닛추기판(조) 와셔	1	1	1	
D-21	GP-020564-00		Presser Lifter Lever Shaft	누름대 올림 레버 축	1	1	1	
D-22	05-014C-1230		E-Ring	E형 멈춤링(ETW-4)	1	2	2	
D-23	43-002C-2070		O-Ring	O-링(P3)	1	1	1	
D-24	SC-0528-1230		Screw	톱카바 나사(우)	1	1	1	
D-25	43-010G-2070		Presser Lifter Lever Spring	누름대 올림 레버 스프링	1	1	1	
D-26	GP-020555-00		Presser Foot Tension Adjusting Shaft	노루발텐션 조절 축	1	1	1	
D-27	SC-0104-5607		Screw	하축 중 베어링 보싱 나사	1	1	1	
D-28	GP-019884-00		Nut	너트(11/64" n=40)	1	1	1	
D-29	GP-020553-00		Presser Foot Tension Spring	노루발텐션 스프링	1	1	1	
D-30	GP-020549-00		Roller Cover	롤러커버	1	1	1	
D-31	SC-0531-2302		Screw	윗뚜껑 고정판 고정나사	2	2	2	
D-32	GP-020554-00		Presser Foot Bracket	노루발 브라켓	1	1	1	
D-33	GP-025149-00	Option	Presser Foot Bracket(B)	노루발 브라켓(B)	1	1	1	
D-34	SC-0317-2700		Screw	캠접축 안내 고정나사	1	1	1	
D-35	AS-005195-04		Presser Foot Link(R) Ass'y	노루발링크"우"(조)	1	1	1	
D-36	SC-A131-4522		Screw	고정나사	1	1	1	
D-38	GP-020545-02		Presser Foot Link(L) Ass'y	노루발링크"좌"	1	1	1	
D-39	SC-A131-4522		Screw	고정나사	1	1	1	
D-40	GP-028285-02		Stud Screw(1/8" n=40)	노루발 단나사	1	1	1	
D-41	GP-020552-00		Roller Shaft	롤러축	1	1	1	
D-42	GP-025171-01	Option	Roller Shaft(B)	롤러축(B)	1	1	1	
D-43	06-020C-7400		E-Ring	E형 멈춤링(ETW-6)	1	1	1	
D-44	GP-020550-00		Presser Foot Shaft	노루발축	1	1	1	
D-45	GP-025170-01	Option	Presser Foot Shaft(B)	노루발축(B)				
D-46	BR-000166-00		Roller Shaft Bearing	롤러축베어링(MR117ZZS)	2	2	2	
D-48	GP-020908-01		Roller(U)	롤러(상)	1	1	1	
D-49	GP-025147-01	Option	Roller(U)	롤러(상)-중후물용	1	1	1	
D-50	GP-025146-01	Option	Roller(U)	롤러(상)(B)-후물용	1	1	1	
D-51	GP-025148-01	Option	Roller(U)	롤러(상)(B)-중후물용	1	1	1	
D-52	SC-0164-2700		Screw	캠접축 카라 고정 나사	2	2	2	
D-53	GP-020927-04		Presser Foot	노루발	1	1	1	
D-54	GP-025137-00		Presser Foot(B)	노루발(B)	1	1	1	
D-55	GP-019906-00		Presser Bar Guide Bracket	누름대 안내 브라켓	1	1	1	
D-56	SC-A174-4122		Screw	가마잡이 나사		1		
D-57	AS-005142-01		Presser Bar Lifter Interlocking Plate Ass'y	누름대 올림 연결판(조)	1	1	1	
D-58	GP-019908-00		Presser Bar Lifter Interlocking Plate	누름대 올림 연결판	1	1	1	

D

Presser Foot Mechanism

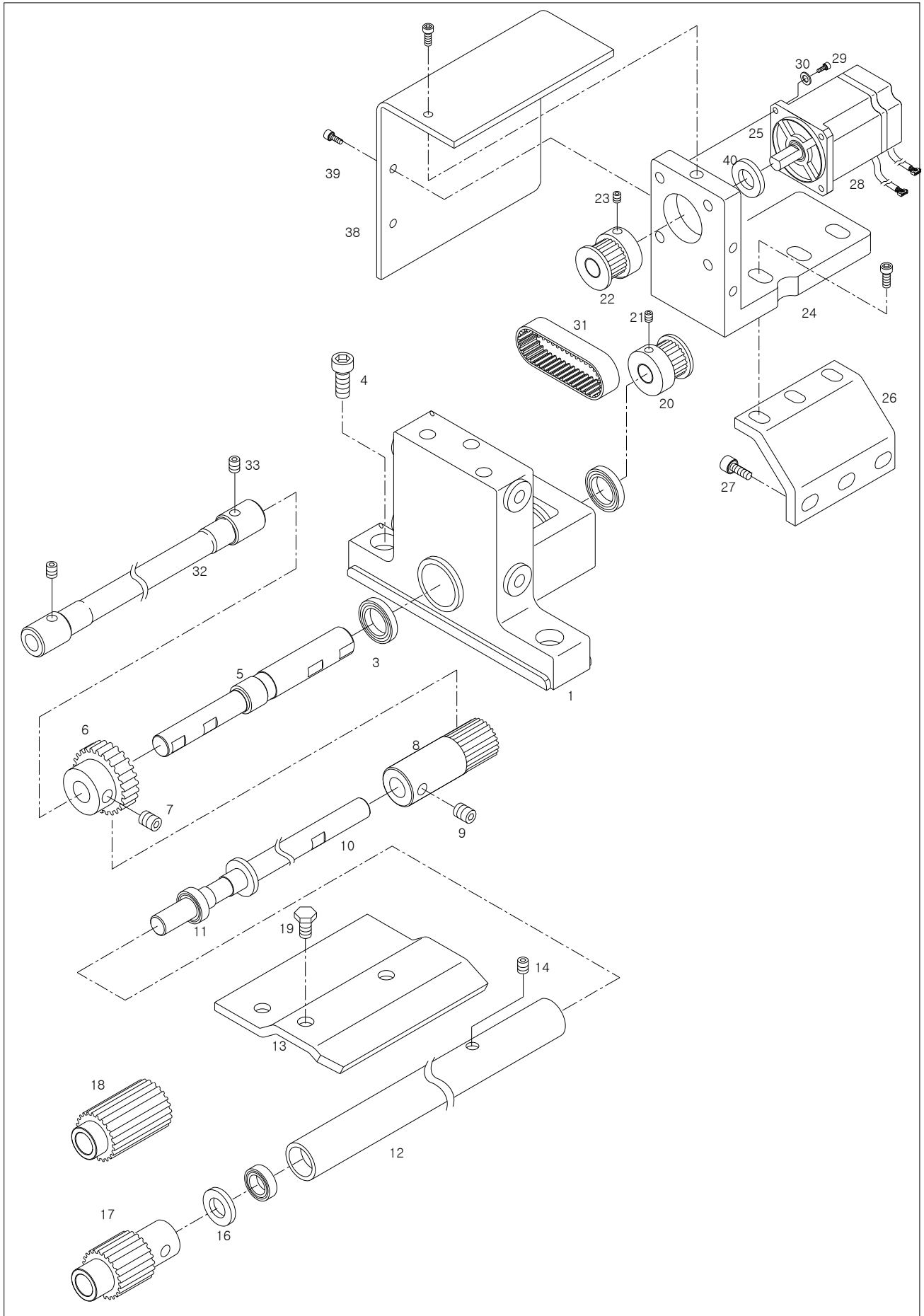
노루발 관계







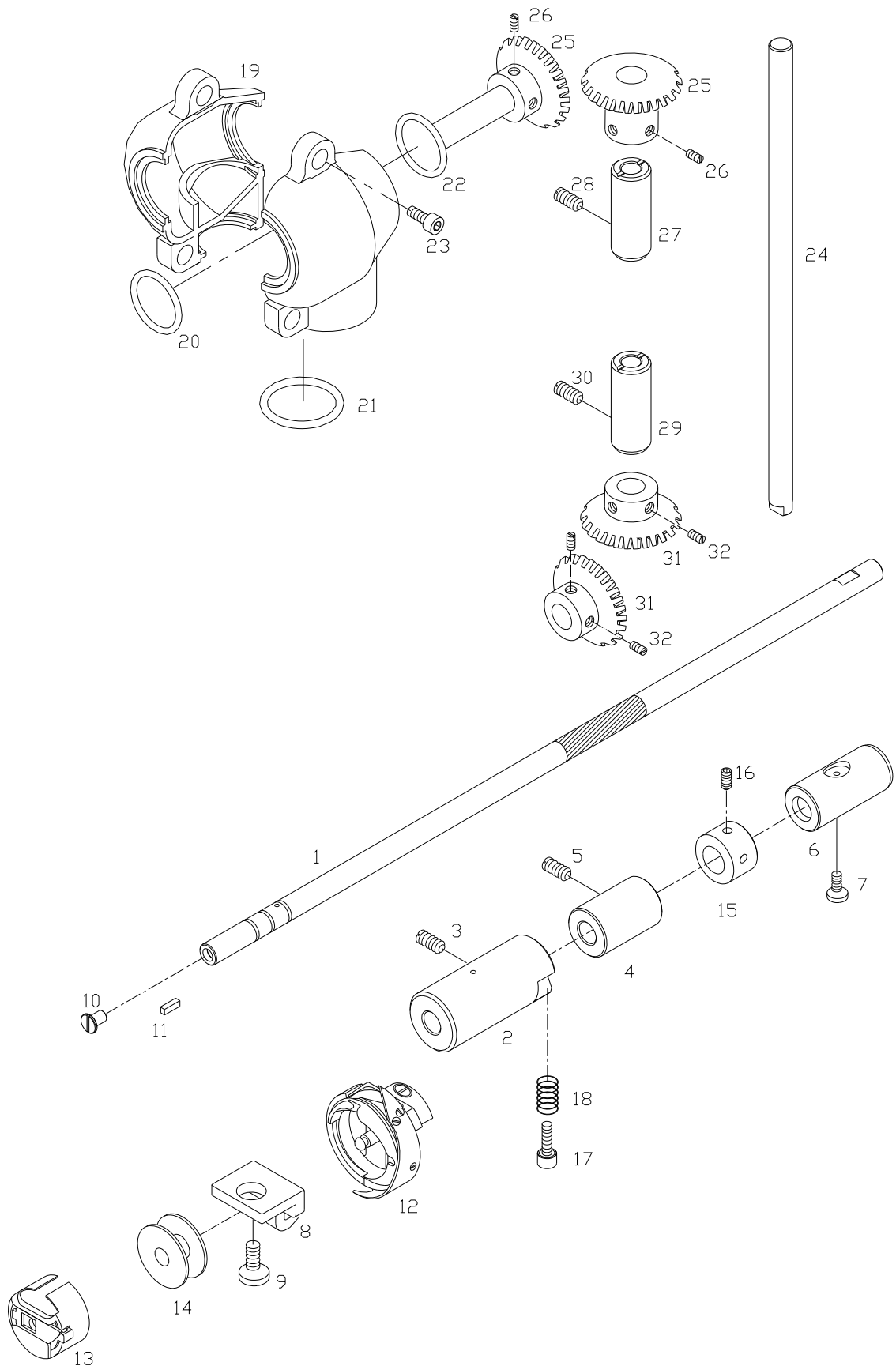
Ref. No.	Parts No.	Note	Name of Parts	품 명	Q'ty			Assembly No.
					M	7M	7E	
E-1	GP-020581-00		Puller Gear Bracket	풀리기어 브라켓			1	
E-2	GP-023704-00		Puller Gear Bracket	풀리기어 브라켓(기계식)	1	1		
E-3			Puller Gear Bracket Bearing	풀리기어 브라켓 베어링(F689ZZ1)			2	
E-4	SC-0183-2700		Screw	베이스 고정 나사 B	2	2	2	
E-5	GP-021154-00		Puller Driven Shaft	풀리구동축			1	
E-6	GP-020889-00		Roller(U) Driven Gear	롤러(상)구동 기어	1	1		
E-7	SC-0164-2700		Screw	캠접촉 카라 고정 나사	2	4	2	
E-8	GP-020888-00		Roller(L)Driven Shaft	롤러(하)구동 기어	1	1	1	
E-9	SC-0105-7500		Screw	동메스 축카라 고정 나사	2	2	2	
E-10	GP-020546-00		Roller Shaft(L)	롤러축(하)	1	1	1	
E-11	BR-000075-00		Roller Shaft(L) Bearing	롤러축(하) 베어링(MF126ZZ)	1	2	2	
E-12	GP-020544-00		Roller Shaft(L) Bearing Base	롤러(하) 베어링 베이스	1	1	1	
E-13	GP-016305-00		Roller Bearing Support	롤러베어링 서포터	1	1	1	
E-14	SC-0543-2302		Screw	톱카바 힌지 고정 나사	3	2	3	
E-16	GP-021391-00		Roller Shaft(L) Bearing Guide	롤러축(하) 베어링 가이드	2	2	2	
E-17	GP-020893-00		Roller(L)	롤러(하)	1	1	1	
E-18	GP-025144-00		Roller(L)B	롤러(하)(B)	1	1	1	
E-19	SC-000649-00		Roller Bearing Support Bolt	롤러베어링 스포터 볼트	1	1	1	
E-20	GP-021603-00		Needle Feed Driven Pulley	바늘피이드 구동 풀리			1	
E-21	SC-0164-2700		Screw	캠접촉 카라 고정나사			2	
E-22	GP-021604-00		Puller Moving Pulley	풀리 중동 풀리			1	
E-23	SC-0164-2700		Screw	캠접촉 카라 고정나사			2	
E-24	GP-021606-00		Puller Driven Motor Bracket	풀리 구동 모터 브라켓			1	
E-25	SC-0329-4111		Fixed Bolt	고정볼트(M8×P1.25)			3	
E-26	GP-023919-00		Puller Driven Motor Bracket Support	풀리 구동 모터 브라켓 스포트			1	
E-27	SC-0328-8670		Fixed Bolt	고정볼트(M4×P0.7)			6	
E-28	20-053A-12HA		Puller Driven Motor	풀리 구동 모터			1	
E-29	SC-0162-5607		Screw	침나사(M5×P0.8)			4	
E-30	10-020W-2700		Washer	와셔			4	
E-31	BE-00079-00		Puller Driven Timming Belt	풀리 구동 타이밍벨트			1	
E-32	AS-005366-02		Puller Shaft(U) Ass'y	풀리 축(상)(조)	1	1	1	
E-33	SC-0164-2700		Screw	캠접촉 카라 고정나사	2	4	2	
E-34	GP-016304-00		Puller Gear Cover(L)	풀리 기어 커버(좌)	1	1		
E-35	SC-0211-7500		Screw	고정 메스 고정 나사	2	2		
E-36	GP-016303-01		Puller Gear Cover(R)	풀리 기어 커버(우)	1	1		
E-37	SC-0211-7500		Screw	고정 메스 고정 나사	2	2		
E-38	GP-021679-00		Puller Driven Motor Cover	풀리 구동 모터 커버			1	
E-39	SC-0211-7500		Screw	고정 메스 고정 나사			3	
E-40	CL-000142-00		Change Gear Collar	변환 기어 카라(기계식)	2	2		
E-41	SC-A308-4517		Screw	육각 구멍 붙이 멈춤나사	2	2		
E-42	GP-023694-00		Bevel Gear Shaft	베벨 기어 축(기계식)	1	1		
E-43	GP-023699-00		Puller Driven Shaft	풀리 구동 축(기계식)	1	1		
E-44	WS-000241-00		Bevel Gear Washer	베벨 기어 와셔(기계식)	1	2		
E-45	WS-000242-00		Change Gear Washer	변환 기어 와셔	2	2	1	
E-46	GP-024027-00		Change Gear A	변환 기어A(Z=26)(기계식)	1	1		
E-47	GP-024028-00		Change Gear B	변환 기어B(Z=28)(기계식)	1	1		
E-48	GP-024029-00		Change Gear C	변환 기어C(Z=30)(기계식)	1	1		
E-49	GP-023686-00		Change Gear D	변환 기어D(Z=32)(기계식)	2	2		
E-50	GP-024030-00		Change Gear E	변환 기어E(Z=34)(기계식)	1	1		
E-51	GP-024031-00		Change Gear F	변환 기어F(Z=36)(기계식)	1	1		
E-52	GP-024032-00		Change Gear G	변환 기어G(Z=38)(기계식)	1	1		
E-53	SC-0164-2700		Screw	캠접촉 카라 고정나사	2	2		
E-54	CL-000149-00		Worm Wheel Shaft Collar	웜 휠 축 카라	1	1		
E-55	SC-0308-4517		Screw	침나사(1/4" n=40)	2	2		
E-56	GP-024477-00		Worm Wheel Shaft	웜 휠 축	1	1		
E-57	GP-024480-00		Worm Wheel Shaft Bracket	웜 휠 축 브라켓	1	1		

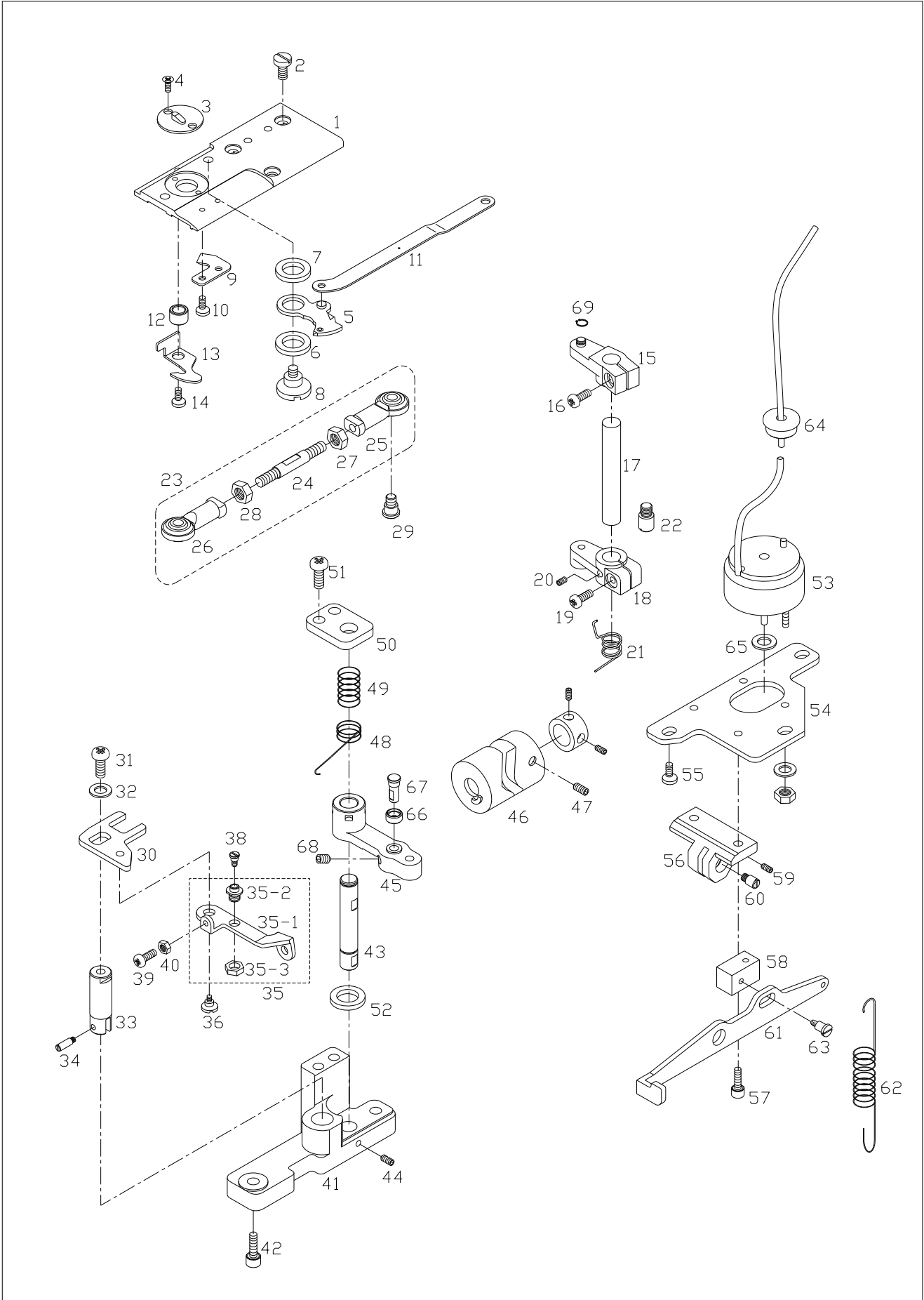


F

Lower Shaft & Upright Shaft Mechanism

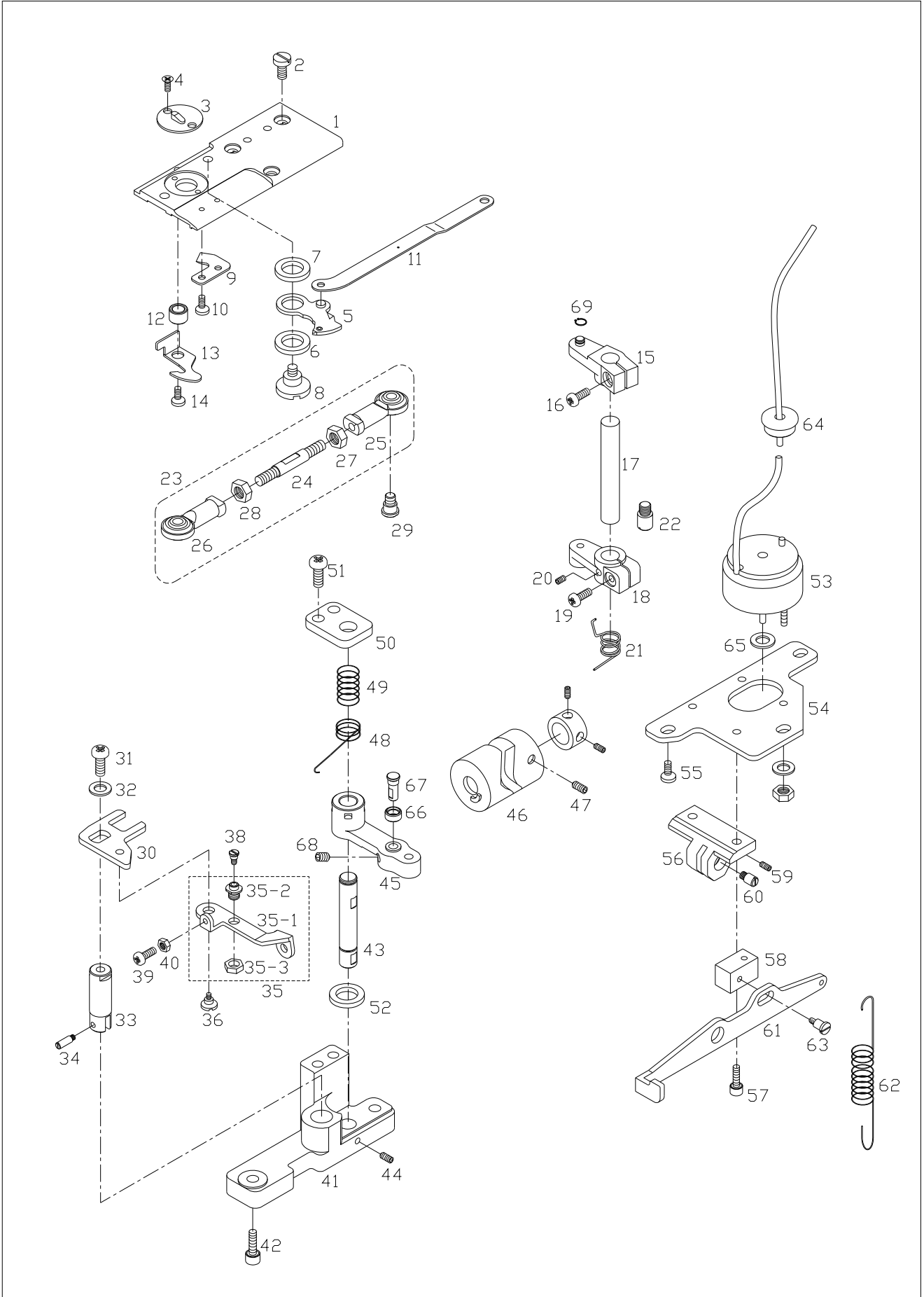
하축 및 입축 관계







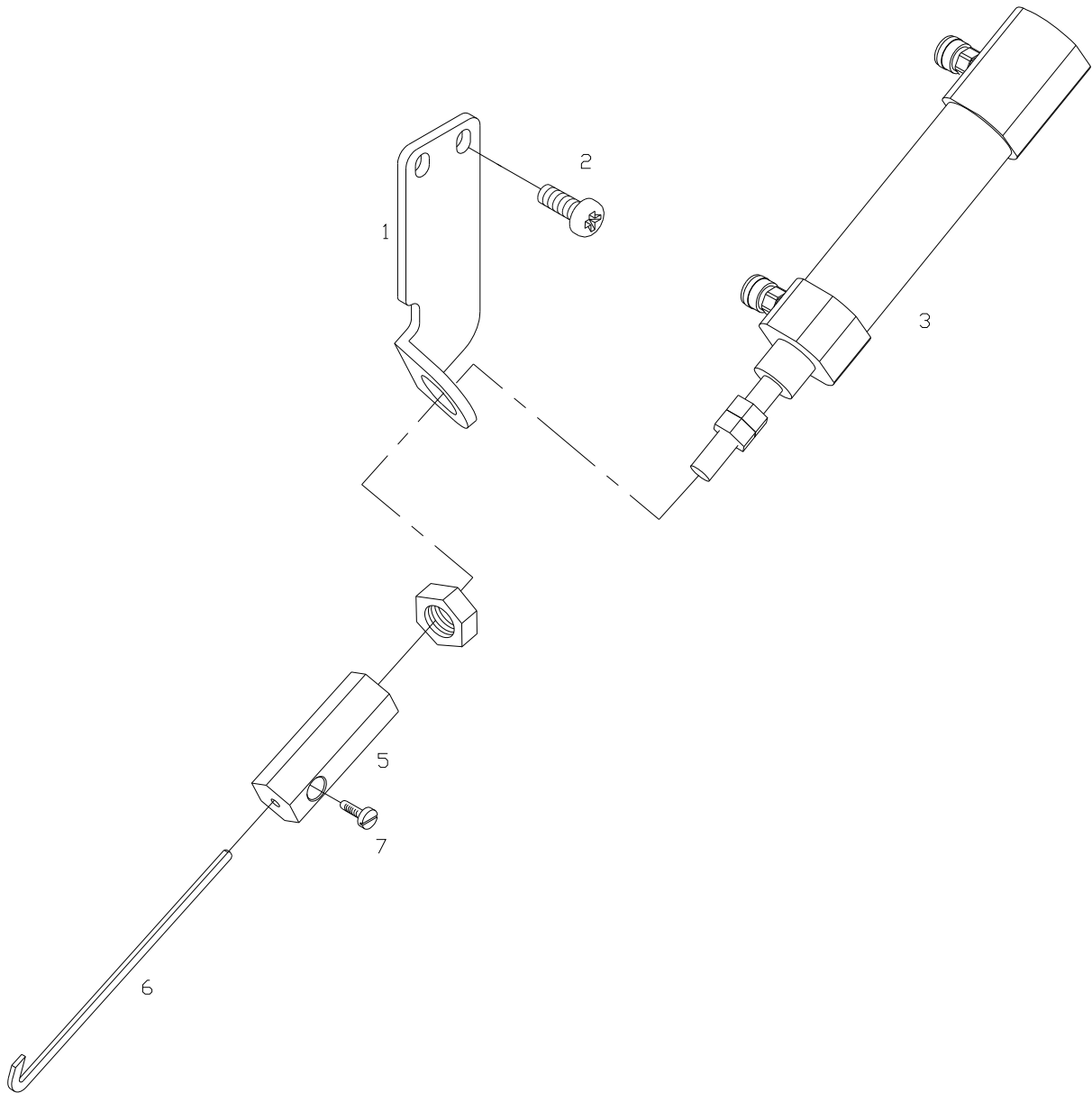
Ref. No.	Parts No.	Note	Name of Parts	품명	Q'ty			Assembly No.
					M	7M	7E	
G-1	GP-028062-03		Needle Plate	침판		1	1	
G-2	SC-000743-00		Screw	침판 고정 나사		3	3	
G-3	GP-019917-00		Needle Hole Plate	침구멍판		1	1	
G-4	SC-001083-03		Screw	면판 실결이 나사		2	2	
G-5	AS-005251-00		Moving Mes Ass'y	동메스(조)		1	1	
G-6	CL-000122-00		Moving Mes Ass'y Collar	동메스(조) 카라		1	1	
G-7	GP-021521-00		Moving Mes Ass'y Spacer	동메스(조) 스페이서		1	1	
G-8	SC-000648-00		Moving Mes Ass'y Stud	동메스(조) 단나사		1	1	
G-9	GP-020890-00		Fixed Mes	고정메스		1	1	
G-10	SC-001083-00		Screw	면판 실결이 나사		2	2	
G-11	GP-019941-02		Thread Trimming Connecting Rod	사절연결로드		1	1	
G-12	GP-021520-01		Thread Holder Base	실잡이 베이스		1	1	
G-13	GP-019919-01		Thread Holder	실잡이		1	1	
G-14	SC-001263-00		Screw	고정나사(1/8" n=40)		1	1	
G-15	AS-005194-02		Thread Trimming Lever Ass'y	사절 레버(조)		1	1	
G-16	01S112S-306H		Screw	침나사(3/16" n=32)		1	1	
G-17	GP-020536-00		Thread Trimming Lever Shaft	사절 레버축		1	1	
G-18	GP-020534-02		Thread Trimming Lever Shaft Arm	사절 레버축암		1	1	
G-19	01S112S-306H		Screw	침나사(3/16" n=32)		1	1	
G-20	SC-0105-7500		Screw	동메스 축카라 고정나사		1	1	
G-21	GP-020535-00		Thread Trimming Lever Shaft Arm Spring	사절레버축암 스프링		1	1	
G-22	GP-020917-00		Mes Driving Link Stud	메스구동링크 스테드		1	1	
G-23	AS-003584-00		Thread Trimmer Connecting Rod Ass'y	사절연결봉(조)		1	1	
G-24	GP-012378-00		Thread Trimmer Connecting Rod	사절연결봉		1	1	
G-25	BR-000057-00		Rod End Bearing	로드엔드 베어링(JFT-5R)		1	1	
G-26	BR-000100-00		Rod End Bearing	로드엔드 베어링(JFT-5L)		1	1	
G-27	10-033C-7507		Nut	볼조인트 침너트(우)		1	1	
G-28	10-036C-7507		Nut	볼조인트 침너트(좌)		1	1	
G-29	10-024S-8677		Thread Trimmer Connecting Rod Stud	사절연결봉 단나사		2	2	
G-30	GP-020542-00		Driving Rod Plate	구동로드판		1	1	
G-31	SC-0307-1230		Screw	톱니 받침 크랭크 침나사		1	1	
G-32	WS-000215-00		Driving Rod Plate Washer	구동로드판 와셔		1	1	
G-33	GP-020540-00		Thread Trimming Driving Rod	사절구동로드		1	1	
G-34	PN-000326-00		Plunger Pin	플런저핀		1	1	
G-35	AS-005196-02		Tension Release Lever Ass'y	실늦추기 레버(조)		1	1	
G-35-1	GP-035047-00		Tension Release Lever	실늦추기 레버		1	1	
G-35-2	GP-035476-00		Tension Release Lever Roller Base	실늦추기 레버 롤러 베이스		1	1	
G-35-3	SN-000176-00		Roller Base Nut	롤러 베이스 고정너트		1	1	
G-36	SC-000651-00		Tension Release Lever Ass'y Stud	실늦추기 레버(조) 단나사		1	1	
G-38	GP-023805-00		Screw	사절 캠 로올러 단나사		1	1	
G-39	SC-0212-7400		Screw	톱니 높이 조절 나사		1	1	
G-40	SN-0113-7400		Nut	톱니 받침 너트		1	1	
G-41	GP-020580-00		Support Bracket	지지브라켓		1	1	
G-42	SC-0183-2700		Screw	베이스 고정나사 B		2	2	
G-43	GP-020537-01		Thread Trimmer Main Lever Shaft	사절메인 레버축		1	1	
G-44	SC-0317-2700		Screw	캠접촉 안내 고정 나사		1	1	
G-45	GP-024160-01		Thread Trimming Main Lever	사절메인 레버		1	1	
G-46	GP-021398-02		Thread Trimming Cam	사절캠		1	1	
G-47	SC-0308-4517		Screw	육각구멍 볼이 멈춤나사		3	3	
G-48	GP-020922-02		Thread Tension Release Spring	실늦추기 스프링		1	1	
G-49	GP-020918-00		Thread Trimming Main Lever Shaft Spring	사절 메인 레버축 스프링		1	1	
G-50	GP-020539-00		Thread Trimming Main Lever Shaft Support Plate	사절 메인 레버축 지지판		1	1	
G-51	SC-0183-2700		Screw	베이스 고정 나사 B		2	2	
G-52	GP-021750-00		Thread Trimming Main Lever Shaft Cushion Ruber	사절 메인 레버축 쿠션 고무		1	1	
G-53	STT24A-00001		Solenoid Ass'y	솔레노이드(조)		1	1	
G-54	GP-020563-00		Solenoid Holder	솔레노이드 홀더		1	1	





Wiper Mechanism

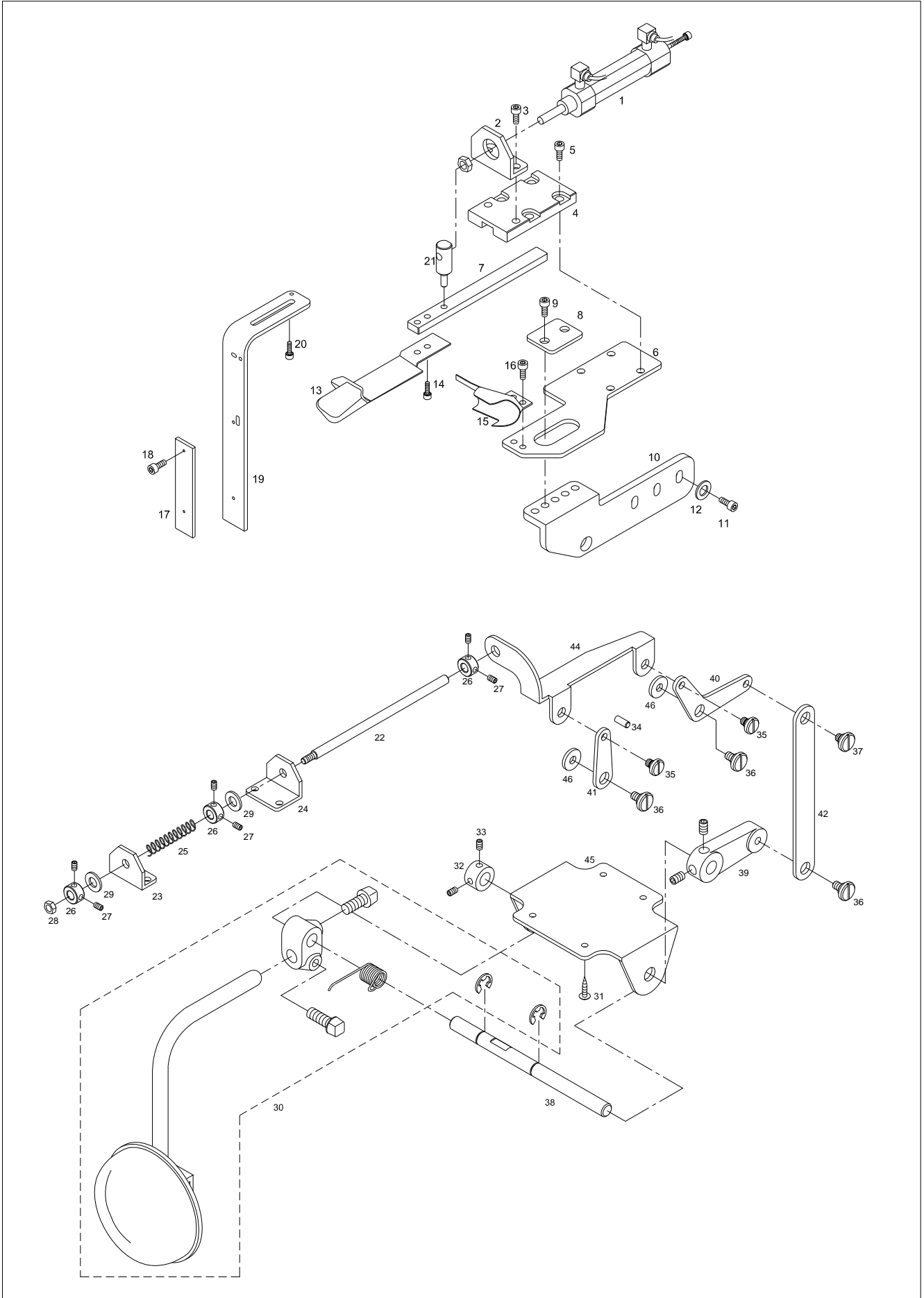
와이퍼 관계





Hemmer Mechanism

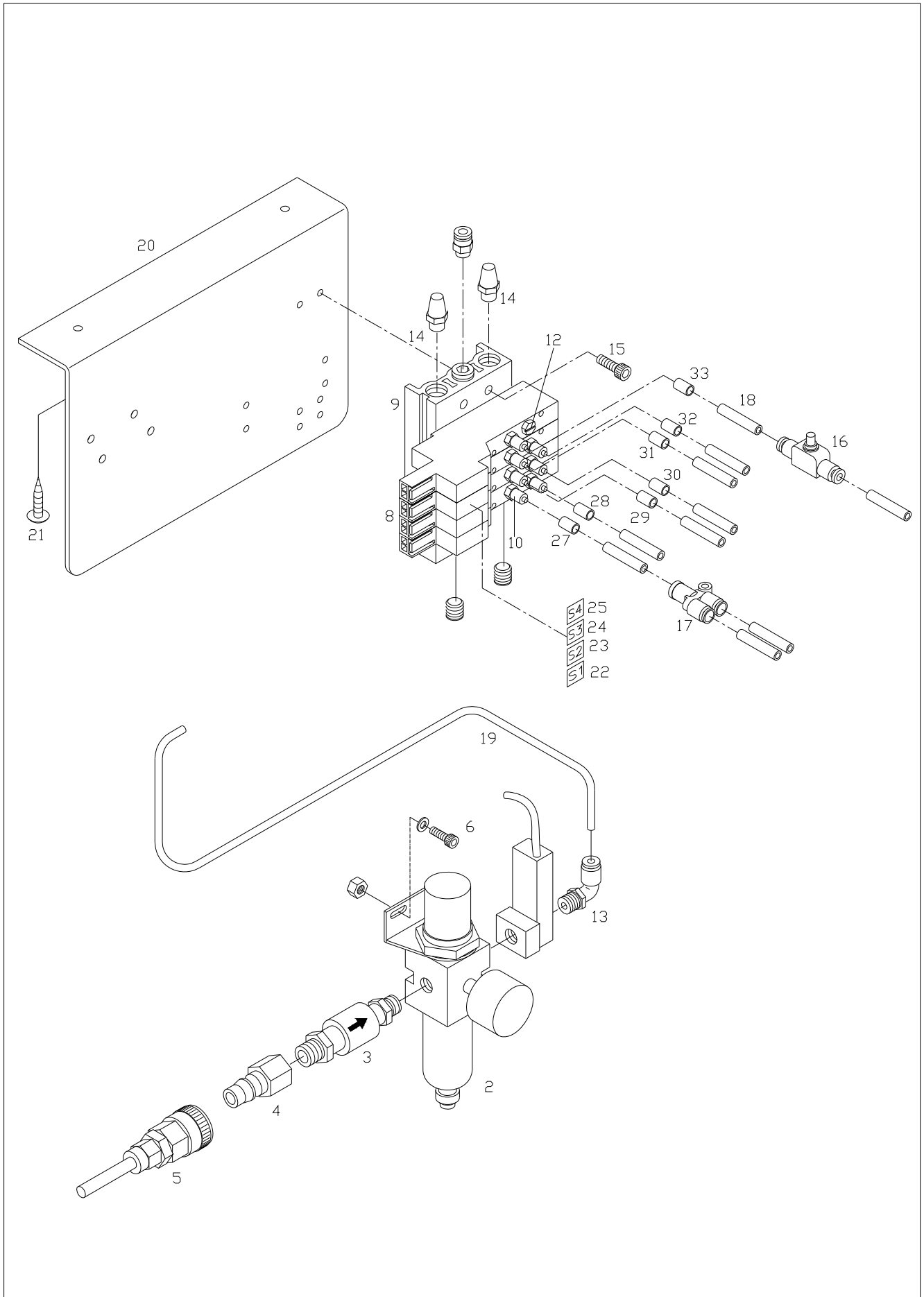
해머 관계

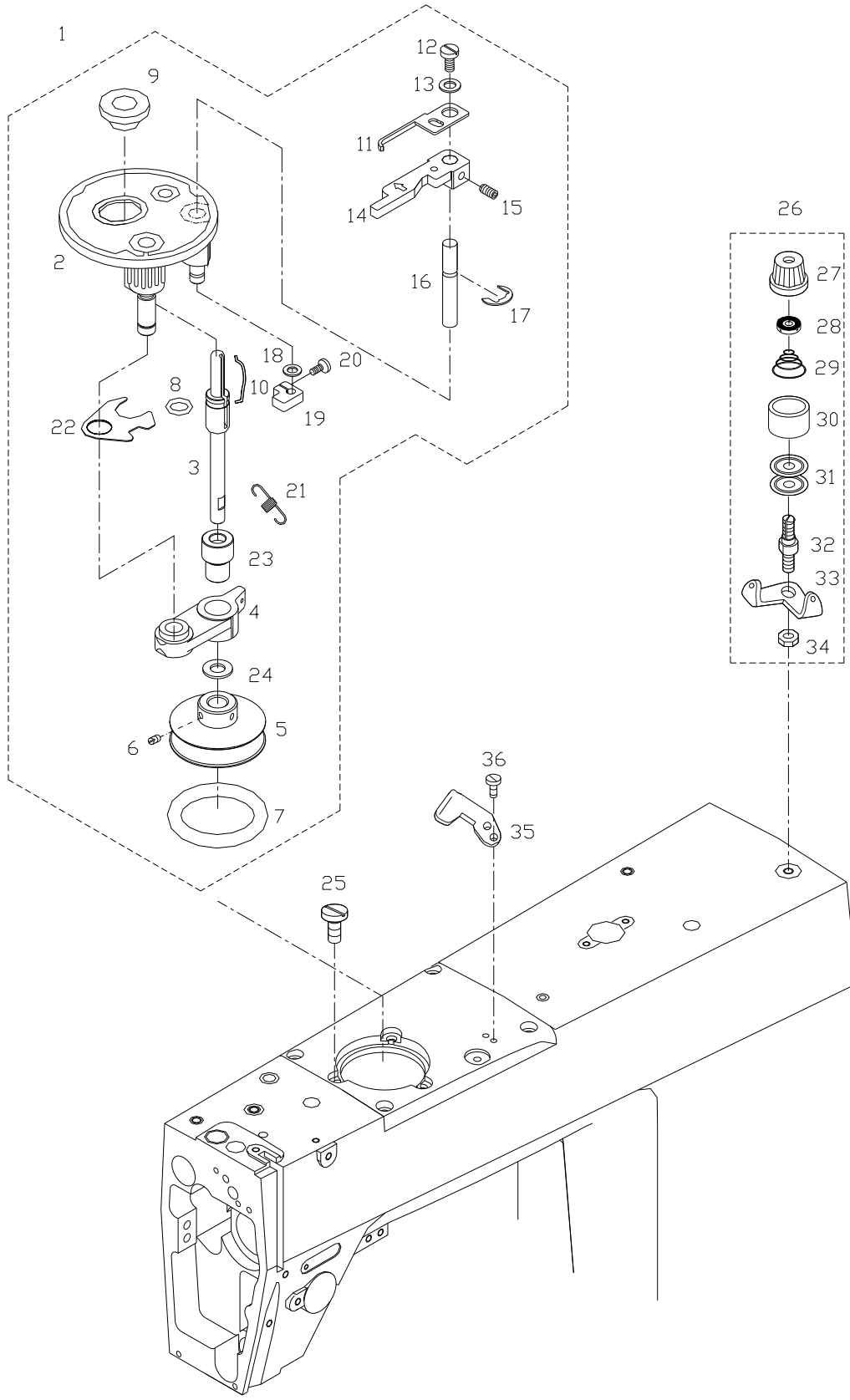


J

Air Pressure Mechanism

공압 관계

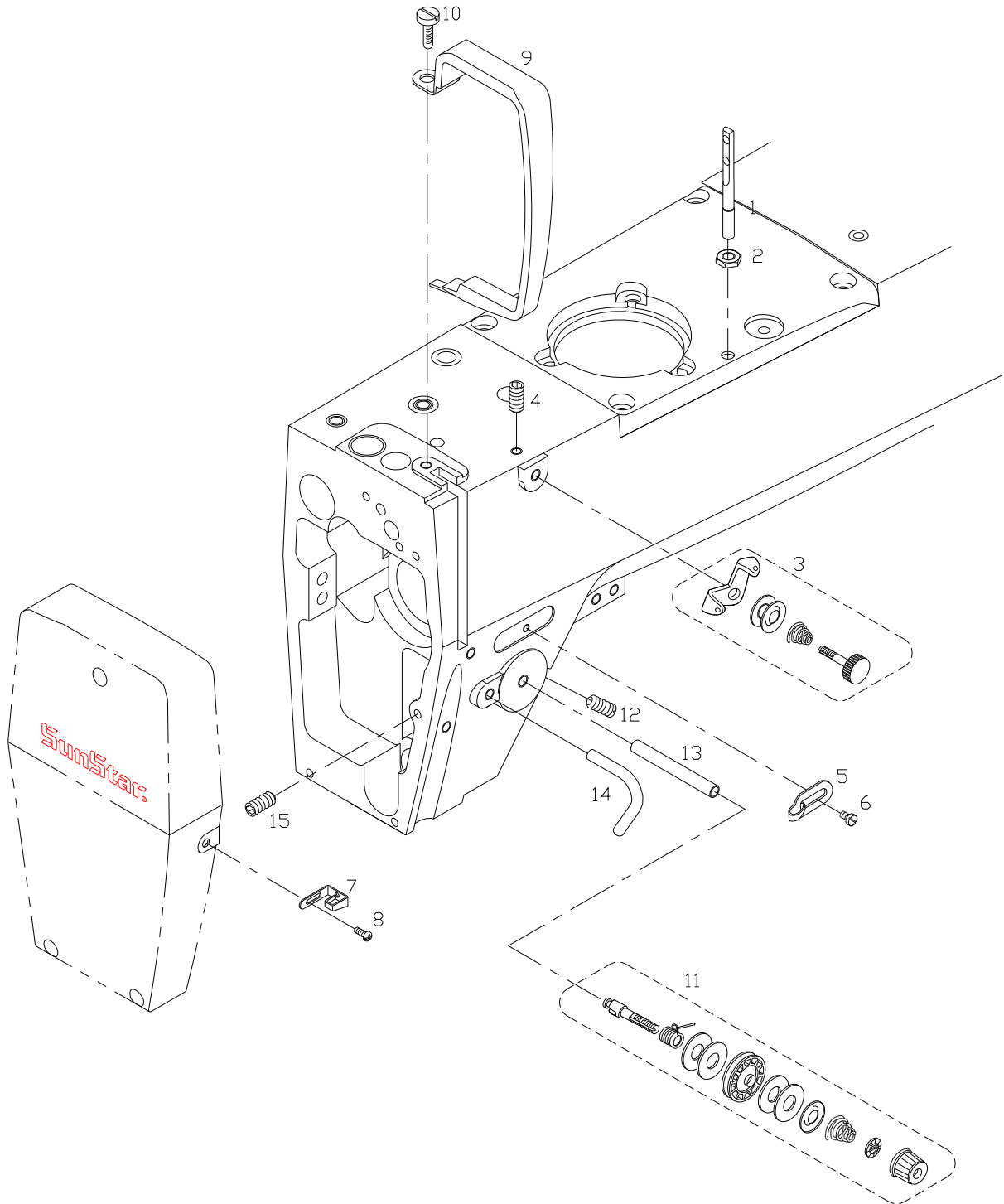






Thread Tension Adjusting Mechanism

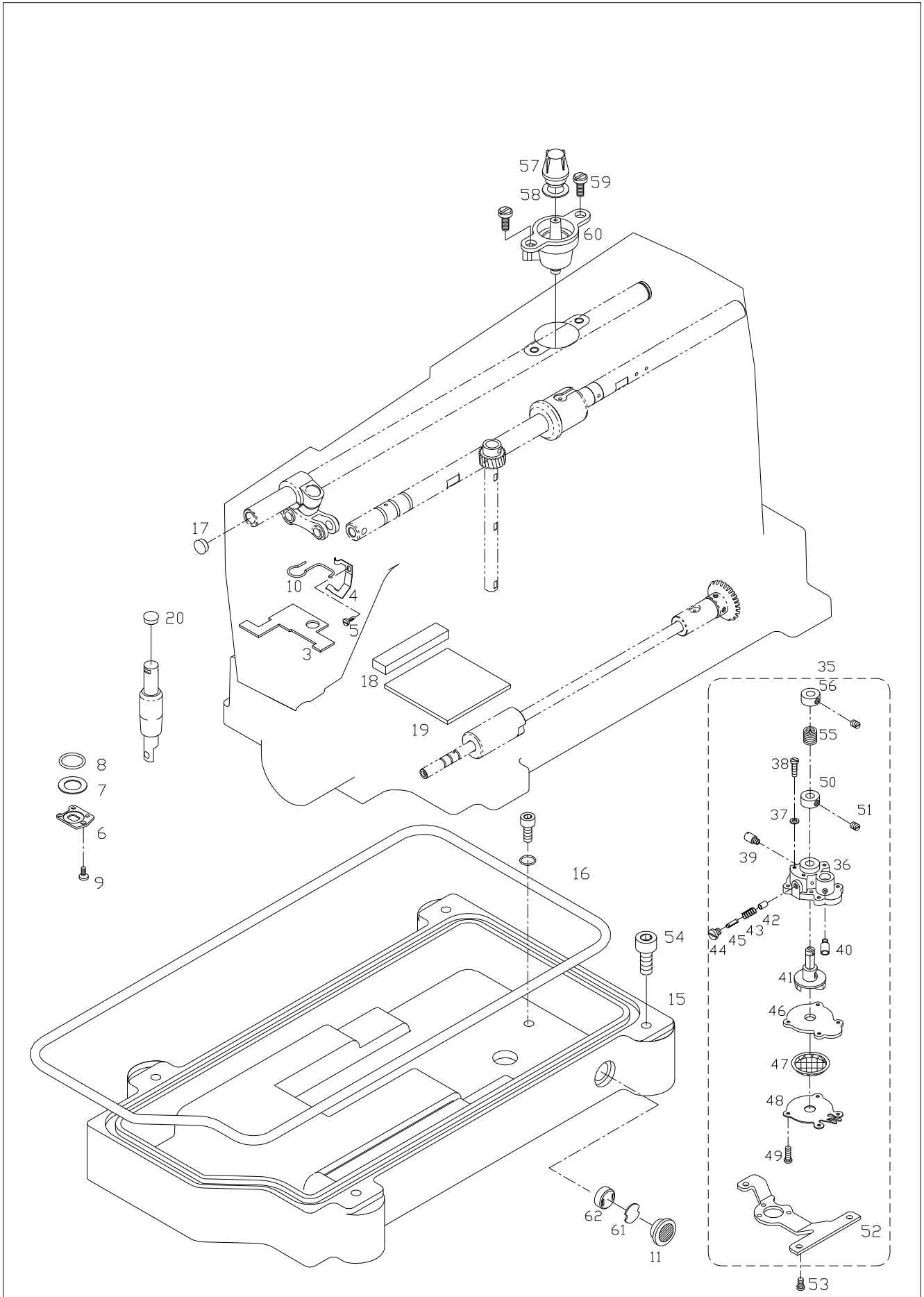
실장력 조절 관계



M

Lubrication Mechanism

급유 관계



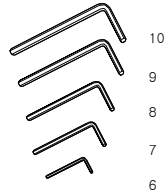
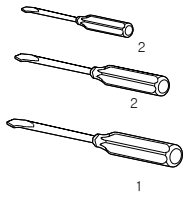


Ref. No.	Parts No.	Note	Name of Parts	품 명	Q'ty			Assembly No.
					M	7M	7E	
M-3	AS-005362-01		Return Hose Ass'y	환류 호스(조)	1	1	1	
M-4	GP-020886-00		Return Hose Holder	환류 호스 홀더	1	1	1	
M-5	SC-0531-2302		Screw	윗뚜껑 고정판 고정 나사(소)	1	1	1	
M-6	GP-020892-00		Oil Rejector Cover	오일 리젝터 커버	1	1	1	
M-7	GP-021518-00		Oil rejector	오일 리젝터	1	1	1	
M-8	RI-000068-00		O-Ring	오일 리젝터 커버 O링	1	1	1	
M-9	SC-A131-4522		Screw	고정나사(1/8" n=44)	3	3	3	
M-10	GP-020907-00		Felt Support	펠트 스포트	1	1	1	
M-11	GP-031725-00		Oil Guage	오일게이지	1	1	1	
M-15	GP-016298-03		Oil Pan	오일팬	1	1	1	
M-16	GP-016299-00		Oil Pan Gasket	오일팬 가스켓	1	1	1	
M-17	GP-021517-00		Rubber Cap	비늘 피이드 축 고무마개	1	1	1	
M-18	GP-021601-00		Lower Shaft Bushing(F) Sponge	하축 전봇싱 스폰지	1	1	1	
M-19	GP-021602-00		Lower Shaft Bushing(F) Felt	하축 전봇싱 펠트	1	1	1	
M-20	GP-021522-00		Cushion Rubber	누름대 올림 축 쿠션고무	1	1	1	
M-21	SC-0347-1230		Screw	배유 구멍 마개 나사	1	1	1	
M-22	44-005R-1230		O-Ring	배유 구멍 마개 나사 O링	1	1	1	
M-23	AS-005714-00		Lower Shaft Oil Supply Pipe A Ass'y	하축 급유 파이프 A(조)	1	1	1	
M-24	GP-016309-00		Lower Shaft Oil Supply Pipe A	하축 급유 파이프 A	1	1	1	
M-25	GP-023284-00		Nipple for Lower Shaft oil Supply	하축 급유 파이프 니플	1	1	1	
M-26	AS-005715-00		Lower Shaft Oil Supply Pipe B Ass'y	하축 급유 파이프 B(조)	1	1	1	
M-27	GP-023283-00		Lower Shaft Oil Supply Pipe B Ass'y	하축 급유 파이프 B	1	1	1	
M-28	GP-023284-00		Nipple for Lower Shaft oil Supply	하축 급유 파이프 니플	1	1	1	
M-29			Oil Hose	오일호스				
M-30	AS-001947-00		Upper Shaft Oil Supply Pipe Ass'y	상축 급유 파이프(조)	1	1	1	
M-31	GP-007714-00		Upper Shaft Oil Supply Pipe Ass'y	상축 급유 파이프	1	1	1	
M-32	GP-007715-00		Nipple for Upper Shaft oil Supply	상축 급유 파이프 니플	1	1	1	
M-33	SC-000330-00		Screw	상축 급유 파이프 고정나사	1	1	1	
M-34			Oil Hose	오일 호스				
M-35	AS-006239-00		Oil Pump Ass'y	오일 펌프(조)	1	1	1	
M-36	44-012A-2350		Oil Pump Body	오일 펌프 몸체	1	1	1	
M-37	44-011W-1600		Washer	오일 펌프 몸체 첩나사 와셔(40)	3	3	3	
M-38	SC-0528-1230		Screw	톱커버 나사(우)(9/64"n=40)	3	3	3	
M-39	44-010C-1600		Nipple for Oil Return Tube	환류 파이프 니플	1	1	1	
M-40	44-009C-1600		Nipple for Lower Shaft oil Supply	하축 급유 니플	1	1	1	
M-41	GP-028061-00		Impeller	임펠러(조)	1	1	1	
M-42	44-117A-1230		Piston	피스톤	1	1	1	
M-43	44-118G-1230		Piston Spring	피스톤 스프링	1	1	1	
M-44	44-119S-1230		Piston Spring Pin Screw	피스톤 스프링 핀나사	1	1	1	
M-45	44-120P-1230		Piston Spring Pin	피스톤 스프링 핀(RP 2x8)	1	1	1	
M-46	44-104C-2350		Oil Pump Cover	오일 펌프 커버	1	1	1	
M-47	44-024C-1230		Oil Pump Cap	오일 펌프 헬터 캡	1	1	1	
M-48	44-105C-2350		Mgnetic Holder	자석잡이	1	1	1	
M-49	44-120S-1230		Screw	오일 펌프 커버 나사(+2.5mm)	4	4	4	
M-50	44-119A-1230		Oil Pump Collar	오일 펌프 카라	1	1	1	
M-51	SC-0512-1230		Screw	오일 펌프 조인트 나사(11/64"n=40)	2	2	2	
M-52	GP-016308-01		Oli Pump Bracket	오일 펌프 브라켓	1	1	1	
M-53	SC-0543-2302		Screw	톱커버 힌지 고정 나사	3	3	3	
M-54	SC-0325-3800		Screw	베드 힌지 첩나사	3	3	3	
M-55	44-016G-1230		Oil Pump Joint Spring	오일 펌프 조인트 스프링	1	1	1	
M-56	44-115A-1230		Oil Pump Joint Collar Ass'y	오일 펌프 조인트 카라(조)	1	1	1	
M-57	GP-011573-00		Oil Window	유창	1	1	1	
M-58	44-031R-300G		Oil Window Packing	유창 고무패킹	1	1	1	
M-59	SC-0543-2302		Screw [9/64" n=44, L=5.5]	톱커버 힌지 고정 나사	2	2	2	
M-60	GP-002289-00		Oil Receiver for Oil Window	유창 오일받이	1	1	1	
M-61	GP-021241-00		Bed Oil Window Cap	베드 유창 마개	1	1	1	
M-62	GP-023626-00		Rubber Packing	베드 유창 고무패킹	1	1	1	

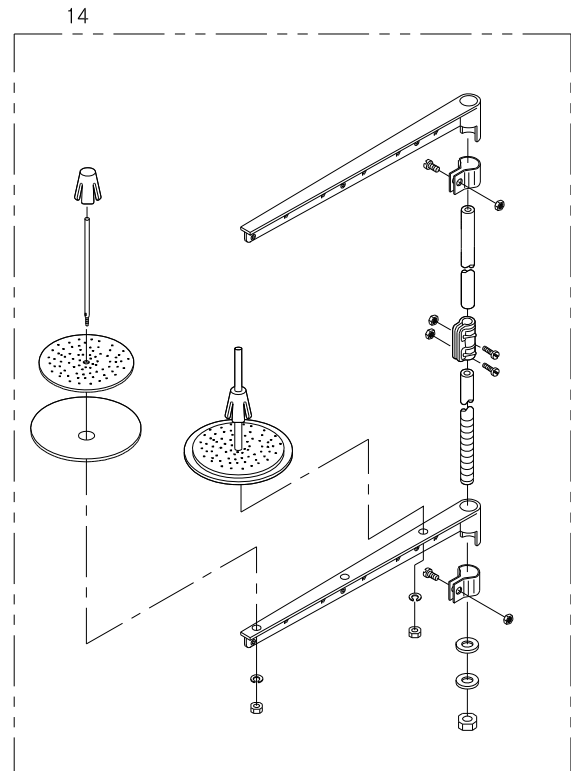
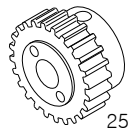
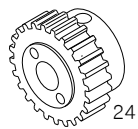
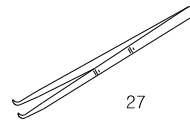
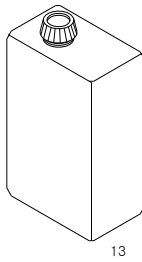
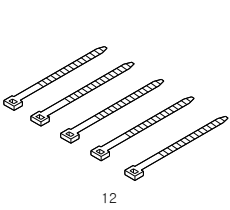
N

Accessories Mechanism

액세서리 관계



11



Index

Parts No.	Name of Parts	Page	Ref.No.	Parts No.	Name of Parts	Page	Ref.No.	Parts No.	Name of Parts	Page	Ref.No.
01-016A-2350	Upper Thread Guide Pin	39	L-1	07-225A-64L7	Bobbin	43	N-4	43-016R-257A	Oil Seal	17	D-5
01-017C-1230	Bed Base	7	A-26	08006SC-8118	Screw	15	C-60	43-017C-257A	Auto Knee Lifter Shaft Nut	17	D-6
01-027C-1230	Nut [11/64" n=40]	39	L-2	08037SC-120D	Screw	9	B-25	43-021A-257A	Auto Knee Lifter Shaft Collar	17	D-7
01-030C-1230	Arm Thread Guide	39	L-5	08091SC-4113	Screw (M6×P1.0)	7	A-34	44-005R-1230	O-Ring	41	M-22
01-031C-1230	Face Plate Thread Guide	39	L-7	08-102A-146L	Thread Take-up	9	B-41	44-009C-1600	Nipple for Lower Shaft oil Supply	41	M-40
01-032A-300G	Bed Hinge Shaft	7	A-31	08-502A-146L	Needle Bar Crank	9	B-42	44-010C-1230	Magnetic	43	N-15
01-034A-300G	Bed Hinge Bracket	7	A-35	08-503A-146L	Thread Take-up Crank	9	B-43	44-010C-1600	Nipple for Oil Return Tube	41	M-39
01-035P-7400	Pin	7	A-25	08-504A-146L	Needle Bar Crank Rod	9	B-44	44-011W-1600	Washer	41	M-37
01-039R-300G	Hinge Rubber	7	A-41	08-506P-123A	Thread Take Up Pin	9	B-45	44-012A-2350	Oil Pump Body	41	M-36
01A121S-811H	Bolt (M10×L70)	7	A-36	08-507S-123A	Screw [9/64" n=40]	9	B-46	44-016G-1230	Oil Pump Joint Spring	41	M-55
01A122S-811H	Spring Wahser	7	A-37	08-509R-250A	Oil Protection	9	B-47	44-024C-1230	Oil Pump Cap	41	M-47
01A123S-811H	Wahser	7	A-38	08-511A-123A	Thread Take Up Needle Bearing	9	B-48	44-031R-300G	Oil Window Packing	41	M-58
01A124S-811H	Nut (M10×P1.5)	7	A-39	09-004S-5030	Plug Bolt	35	J-12	44-104C-2350	Oil Pump Cover	41	M-46
01S110S-306H	Washer	33	I-12	10-020W-2700	Washer	9	B-29	44-105C-2350	Magnetic Holder	41	M-48
01S112S-306H	Screw	17	D-2	10-020W-2700	Washer	15	C-67	44-115A-1230	Oil Pump Joint Collar Ass'y	41	M-56
01S112S-306H	Screw	27	G-16	10-020W-2700	Washer	21	E-30	44-117A-1230	Piston	41	M-42
01S112S-306H	Screw	27	G-19	10-024S-8677	Connecting Rod Stud	27	G-29	44-118G-1230	Piston Spring	41	M-43
02-003A-2700	Nylon Clip	43	N-12	10-033C-7507	Nut	27	G-27	44-119A-1230	Lower Shaft Collar	25	F-15
02-003W-300G	Link Cam Washer	9	B-8	10-036C-7507	Nut	27	G-28	44-119A-1230	Oil Pump Collar	41	M-50
02004SC-4113	Screw [M4×P0.7]	37	K-20	10S017S-306H	Rubber Washer	33	I-29	44-119S-1230	Piston Spring Pin Screw	41	M-44
02014SC-4113	Presser Bar Lifter Arm Bolt	19	D-79	10S114S-306H	Needle Feed Driven Shaft Collar	13	C-41	44-120P-1230	Piston Spring Pin	41	M-45
02014SC-4113	Screw	33	I-14	20S049S-306H	Nut	33	I-28	44-120S-1230	Screw	41	M-49
02014SC-4113	Screw	33	I-16	11-017C-7507	Nut	13	C-26	46-002A-2300	Sensor Ass'y	9	B-38
02-016A-120D	Bearing	9	B-17	13-021C-5300	C-Ring	13	C-10	49-004C-5030	Nipple	35	J-4
02-016R-1230	O-Ring For Upper Shaft	9	B-4	14002SC-7113	Screw	25	F-23	49A001S-811H	Speed Controller	35	J-16
02-019W-1230	Washer	19	D-70	14014SC-4113	Fixing Bolt	35	J-6	49A004S-811H	Quick Joint Coupling	35	J-5
02-020M-1230	Upper Shaft Felt	9	B-5	15-028C-2070	Sensor Bracket	13	C-57	49A014S-811H	Elbow Union	35	J-13
02-020S-120D	Screw [M5, L=25]	9	B-27	16-015C-9570	C-Ring	15	C-82	49A015S-811H	Hose Nipple	35	J-10
02023SC-7113	Screw	9	B-19	17-013G-7900	Feed Adjusting Button Spring	15	C-91	49A016S-811H	Union	35	J-17
02023SC-7113	Screw	39	L-15	20-004S-300G	Screw (M6×P1.0)	7	A-40	49A020S-811H	Silencer	35	J-14
02-028C-1230	Oil Seal for Upper shaft Bushing(R)	9	B-16	20-051A-12HA	Needle Feed Driven Motor	15	C-65	51A048S-81H2	Manifold Block	35	J-9
02031SC-7113	Screw	33	I-3	20-053A-12HA	Puller Driven Motor	21	E-28	90A033S-811H	Screw	33	I-20
02031SC-7113	Screw	33	I-5	22-012C-5030	E-Ring	15	C-92	91-001C-2700	Wrench(2mm)	43	N-6
02031SC-7113	Screw	33	I-9	22-012C-5030	E-Ring	17	D-13	91-001C-3800	Wrench(4mm)	43	N-9
02031SC-7113	Screw	33	I-11	40-003A-2700	Cable Connecting Bolt	19	D-100	91-002C-1230	Driver(large)	43	N-1
02-106A-257B	Upper shaft Bushing(R)	9	B-15	40-004C-2700	Cable Connecting Nut A	19	D-101	91-002C-2700	Wrench(5mm)	43	N-10
02-106L-1230	Screw	9	B-23	40-005C-2700	Cable Connecting Nut B	19	D-102	91-002S-3400	Screw	33	I-31
02-115C-2500	Oil Adjusting Pin for Upper Shaft	9	B-3	40-007W-1600	Washer	37	K-18	91-002S-3400	Tapping Screw	35	J-21
02-121A-1230	Upper Shaft Collar	9	B-20	40-024A-1230	Spring Cover	37	K-30	91-003C-2700	Wrench(3mm)	43	N-8
02-211A-1230	Upper Shaft Gear	9	B-22	40-104A-250B	Thread Tension Control Ass'y	39	L-11	91-004C-2700	Wrench(2.5mm)	43	N-7
02-212A-1230	Upright Shaft Gear(U)	25	F-25	40-108A-1306	Thread Tension Disk	37	K-31	91-008C-1230	Oil Battle	43	N-13
02-213A-1230	Upright Shaft Gear(L)	25	F-31	40-333G-3710	Thread Tension Control Spring	37	K-29	91-011C-1230	Oiler	43	N-5
03-010A-3710	Gear Case Ass'y	25	F-19	40-804W-1230	Thread Tension Control Spring Stopper	37	K-28	91-020A-300G	Tweezers	43	N-27
03010MC-4135	Screw [M3, L=10]	9	B-39	41-008A-300G	Bobbin Stand	37	K-9	91-021C-300G	Head Rest	43	N-28
03-013R-3710	Oil Seal(B)	25	F-20	41-009A-300G	Bobbin Stopper	37	K-10	91-103C-1230	Driver(Middle,Small)	43	N-2
03-014R-3710	Oil Seal(C)	25	F-21	41-010A-300G	Bobbin Winder Adjusting Plate	37	K-11	91-108M-640L	Head Cover	43	N-11
04-009C-3710	E-ring [Ø5]	37	K-17	41-013A-300G	Bobbin Winder Lever	37	K-14	AS-000353-00	Bobbin Winder Ass'y	37	K-1
05-014C-1230	E-Ring	17	D-22	41S001S-306H	Bobbin Winder Base Ass'y	37	K-2	AS-000378-01	Sub Upper Thread Tension Control Ass'y-Heavy	39	L-3
05-026S-38LB	Presser Adjust Screw	19	D-71	41S009S-306H	Bobbin Winder Shaft Rubber Ring	37	K-8	AS-000581-00	Thread Tension Control Ass'y	37	K-26
05-027C-38LB	Presser Adjust Screw Nut	19	D-72	41S013S-306H	Bobbin Winder Lever Shaft	37	K-16	AS-001947-00	Upper Shaft Oil Supply Pipe Ass'y	41	M-30
05A052S-811H	Urethane Hose(Ø6)	35	J-19	41S014S-306H	Thread Winder Adjusting Cam	37	K-19	AS-003584-00	Thread Trimmer Connecting Rod Ass'y	27	G-23
05S013S-306H	Collar	33	I-26	41S017S-306H	Thread Winder Action Plate	37	K-22	AS-005142-01	Presser Bar Lifter Interlocking Plate Ass'y	17	D-57
06011SW-306H	Washer	37	K-13	41S021S-306H	Thread Winder Spring	37	K-21	AS-005143-01	Needle Frame Ass'y	13	C-19
06-020C-7400	E-Ring	17	D-43	41S023S-306H	Screw [11/64" n=40]	37	K-25	AS-005194-02	Thread Trimming Lever Ass'y	27	G-15
06-021C-9570	Screw Presser	15	C-106	41S025S-306H	Bobbin Winder Mes	37	K-35	AS-005195-04	Presser Foot Link(R) Ass'y	17	D-35
06-021W-7400	Washer	17	D-10	41S026S-306H	Thread Guide Plate	37	K-33	AS-005196-02	Tension Release Lever Ass'y	27	G-35
06-033M-3800	E-Ring	19	D-96	41S028S-306H	Thread Tension Adjusting Shaft	37	K-32	AS-005200-00	Tension Release Connecting Rod Ass'y	19	D-95
06-102W-2350	Washer	7	A-33	41S034S-306H	Thread Tension Control Cap Nut	37	K-27	AS-005201-00	Tension Release Plate Ass'y	17	D-19
07-005M-1230	Lower Shaft Felt	25	F-11	43-001A-2500	Presser Bar Lifter	19	D-69	AS-005202-00	Tension Release Cable Ass'y	19	D-99
07-011W-1230	Spring Washer	9	B-28	43-002C-2070	O-Ring	17	D-23	AS-005250-00	Knee Lifter Lever Shaft Ass'y	17	D-9
07-015G-1230	Spring	25	F-18	43-010G-2070	Presser Lifter Lever Spring	17	D-25	AS-005251-00	Moving Mes Ass'y	27	G-5
07-225A-64L7	Bobbin	25	F-14	43-103A-64L7	Collar	33	I-32	AS-005256-00	Arm&Bed	7	A-1

Index

Parts No.	Name of Parts	Page	Ref.No.	Parts No.	Name of Parts	Page	Ref.No.	Parts No.	Name of Parts	Page	Ref.No.
AS-005362-01	Return Hose Ass'y	41	M-3	GP-016305-00	Roller Bearing Support	21	E-13	GP-019941-02	Thread Trimming Connecting Rod	27	G-11
AS-005366-02	Puller Shaft(U) Ass'y	21	E-32	GP-016307-01	Lower Shaft	25	F-1	GP-019942-02	Needle Frame	13	C-20
AS-005380-01	Filter Regulator Ass'y	35	J-1	GP-016308-01	Oli Pump Bracket	41	M-52	GP-019995-02	Guide Setting Plate	33	I-8
AS-005381-01	Solenoid Valve Ass'y	35	J-7	GP-016309-00	Lower Shaft Oil Supply Pipe A	41	M-24	GP-020174-00	Coupling Spacer	15	C-63
AS-005382-00	Presser Bar Cylinder Ass'y	19	D-75	GP-016313-00	Wiper Bracket	31	H-1	GP-020534-02	Thread Trimming Lever Shaft Arm	27	G-18
AS-005383-00	Hemmer Cylinder Ass'y	33	I-1	GP-016314-01	Hemmer Bracket	33	I-10	GP-020535-00	Spring	27	G-21
AS-005384-00	Wiper Cylinder	31	H-3	GP-016315-01	Manifold Bracket	35	J-20	GP-020536-00	Thread Trimming Lever Shaft	27	G-17
AS-005416-00	Idler Base Ass'y	15	C-93	GP-016316-01	Upper Shaft Bushing(F)	9	B-11	GP-020537-01	Thread Trimmer Main Lever Shaft	27	G-43
AS-005435-00	Coupling Ass'y	15	C-61	GP-016317-01	Upper shaft Bushing(M)	9	B-13	GP-020539-00	Support Plate	27	G-50
AS-005502-00	Filter Regulator Ass'y	35	J-34	GP-016318-00	Lower Shaft Bushing(F)	25	F-2	GP-020540-00	Thread Trimming Driving Rod	27	G-33
AS-005714-00	Lower Shaft Oil Supply Pipe A Ass'y	41	M-23	GP-016319-00	Lower Shaft Bushing(M)	25	F-4	GP-020542-00	Driving Rod Plate	27	G-30
AS-005715-00	Lower Shaft Oil Supply Pipe B Ass'y	41	M-26	GP-016320-00	Lower Shaft Bushing(R)	25	F-6	GP-020544-00	Roller Shaft(L) Bearing Base	21	E-12
AS-005935-02	Feed Adjusting Block Ass'y	15	C-87	GP-016321-00	Needle Bar Frame Shaft Bushing	13	C-32	GP-020545-02	Presser Foot Link(L) Ass'y	17	D-38
AS-006014-00	Puller Bevel Gear	23	E-63	GP-016322-00	Needle Feed Shaft Bushing(F)	13	C-2	GP-020546-00	Roller Shaft(L)	21	E-10
AS-006059-00	Thread Take-up Lever Ass'y	9	B-40	GP-016323-00	Needle Feed Shaft Bushing(R)	13	C-4	GP-020549-00	Roller Cover	17	D-30
AS-006076-00	Arm&Bed	7	A-2	GP-016324-01	Worm Gear Bushing	23	E-65	GP-020550-00	Presser Foot Shaft	17	D-44
AS-006076-02	Arm&Bed	7	A-2	GP-016325-00	Presser Bar Lifter Shaft Bushing	19	D-63	GP-020552-00	Roller Shaft	17	D-41
AS-006239-00	Oil Pump Ass'y	41	M-35	GP-016396-00	Back Cover	7	A-9	GP-020553-00	Presser Foot Tension Spring	17	D-29
AS-006458-01	Hook Cover Base Ass'y	7	A-14	GP-016397-00	Back Cover Gascket	7	A-10	GP-020554-00	Presser Foot Bracket	17	D-32
AS-007554-00	Knee Lifter Ass'y	33	I-30	GP-016398-00	Top Cover	7	A-6	GP-020555-00	Presser Foot Tension Adjusting Shaft	17	D-26
BE-00079-00	Puller Driven Timming Belt	21	E-31	GP-016399-00	Top Cover Gascket	7	A-7	GP-020556-00	Solenoid Lever Stud	29	G-60
BR-000057-00	Rod End Bearing	27	G-25	GP-016400-00	Model Mark(KM-360J-M)	7	A-22	GP-020558-01	Thread Trimming Solenoid Joint	29	G-58
BR-000075-00	Roller Shaft(L) Bearing	21	E-11	GP-016401-00	Motor Cover	11	B-57	GP-020559-00	Knee Lifter Lever	17	D-15
BR-000100-00	Rod End Bearing	27	G-26	GP-016410-00	Upright Shaft	25	F-24	GP-020560-00	Presser Lifter Lever	17	D-18
BR-000166-00	Roller Shaft Bearing	17	D-46	GP-016411-00	Presser Bar Bushing	19	D-61	GP-020561-01	Solenoid Lever	29	G-61
CA-002674-00	Cable	13	C-58	GP-016412-01	Needle Bar Guide Bushing	13	C-31	GP-020562-01	Solenoid Lever Bracket	29	G-56
CA-002735-00	Cable	9	B-37	GP-016479-00	Auto Knee Lifter Shaft Bushing	17	D-4	GP-020563-00	Solenoid Holder	27	G-54
CL-000122-00	Moving Mes Ass'y Collar	27	G-6	GP-016480-00	Presser Lifter Connecting Bar	17	D-16	GP-020564-00	Presser Lifter Lever Shaft	17	D-21
CL-000124-00	Needle Feed Sesor Slit Collar	13	C-51	GP-016577-01	Sensor Base	9	B-34	GP-020565-01	Wire Rope End	19	D-94
CL-000136-00	Needle Bar Frame Shaft Collar	13	C-27	GP-016578-01	Hemmer Cylinder Base	33	I-2	GP-020566-00	Wire Holder Base	19	D-97
CL-000139-00	Needle Feed Connecting Rod Collar	15	C-84	GP-016578-02	Hemmer Cylinder Base	33	I-2	GP-020580-00	Support Bracket	27	G-41
CL-000141-00	Needle Feed shaft Collar	15	C-70	GP-016579-01	Hemmer Cylinder Knuckle	33	I-21	GP-020581-00	Puller Gear Bracket	21	E-1
CL-000142-00	Change Gear Collar	21	E-40	GP-016579-02	Hemmer Cylinder Knuckle	33	I-21	GP-020886-00	Return Hose Holder	41	M-4
CL-000149-00	Worm Wheel Shaft Collar	21	E-54	GP-016580-01	Slider Guide	33	I-4	GP-020887-00	Presser Bar Lifter Cam Shaft	19	D-67
EA-000089-00	Knee Switch Ass'y	33	I-17	GP-016658-01	Guide Support Plate	33	I-6	GP-020888-00	Roller(L)Driven Shaft	21	E-8
GP-000761-00	Tension Release Cable Holder	19	D-103	GP-016728-02	Knee Switch Bracket	33	I-19	GP-020889-00	Roller(U) Driven Gear	21	E-6
GP-000764-01	Bobbin Winder Action Body	37	K-4	GP-016996-00	Slider	33	I-7	GP-020890-00	Fixed Mes	27	G-9
GP-000765-01	Bobbin Winder Driving Shaft	37	K-3	GP-018052-00	Bobbin Case	25	F-13	GP-020892-00	Oil Rejector Cover	41	M-6
GP-000814-00	Rotary Hook	25	F-12	GP-018205-00	CE Mark	7	A-44	GP-020893-00	Roller(L)	21	E-17
GP-000835-02	Sync. Sensor Slit	9	B-32	GP-018594-00	Slide Valve	35	J-3	GP-020907-00	Felt Support	41	M-
GP-001623-00	Solenoid Valve	35	J-8	GP-018707-00	Coupling	15	C-62	GP-020908-01	Roller(U)	17	D-48
GP-002028-00	Coupling	9	B-24	GP-019884-00	Nut	17	D-28	GP-020916-00	Wiper	31	H-6
GP-002289-00	Oil Receiver for Oil Window	41	M-60	GP-019903-00	Presser Bar Lifter Shaft	19	D-62	GP-020917-00	Mes Driving Link Stud	27	G-22
GP-002323-00	Filter Regulator	35	J-2	GP-019904-00	Presser Bar	19	D-60	GP-020918-00	Spring	27	G-49
GP-004578-00	Bobbin Winder Action Pulley	37	K-5	GP-019906-00	Presser Bar Guide Bracket	17	D-55	GP-020920-00	Solenoid Lever Spring	29	G-62
GP-004579-00	Bushing	37	K-23	GP-019907-00	Presser Bar Spring	19	D-66	GP-020921-00	Knee Lifter Connecting Crank Shaft End	17	D-14
GP-006179-02	Arm&Bed	7	A-45	GP-019908-00	Presser Bar Lifter Interlocking Plate	17	D-58	GP-020922-02	Thread Tension Release Spring	27	G-48
GP-007651-00	Upright Shaft Bushing(U)	25	F-27	GP-019912-00	Bushing	19	D-59	GP-020923-01	Knee Lifter Connecting Crank	17	D-1
GP-007652-00	Upright Shaft Bushing(L)	25	F-29	GP-019913-00	Needle Bar Guide Slide Block	13	C-39	GP-020925-00	Knee Lifter Connecting Crank Shaft	17	D-11
GP-007714-00	Upper Shaft Oil Supply Pipe Ass'y	41	M-31	GP-019914-00	Needle Feed Shaft Arm Stud	15	C-72	GP-020926-00	Wiper Arm	31	H-5
GP-007715-00	Nipple for Upper Shaft oil Supply	41	M-32	GP-019915-01	Needle Bar Bushing(U)	13	C-22	GP-020927-04	Presser Foot	17	D-53
GP-011573-00	Oil Window	41	M-57	GP-019916-01	Needle Bar Bushing(L)	13	C-23	GP-021154-00	Puller Driven Shaft	21	E-5
GP-012378-00	Thread Trimmer Connecting Rod	27	G-24	GP-019917-00	Needle Hole Plate	27	G-3	GP-021158-01	Hook Cover	7	A-16
GP-014837-00	Sensor	15	C-59	GP-019918-04	Hook Holder	25	F-8	GP-021161-00	Take Up Guide	39	L-9
GP-016295-00	Face Plate	7	A-3	GP-019919-01	Thread Holder	27	G-13	GP-021241-00	Bed Oil Window Cap	41	M-61
GP-016296-00	Face Plate Gascket	7	A-4	GP-019920-00	Needle Feed Arm	13	C-11	GP-021384-00	Needle Feed Driven Shaft	13	C-40
GP-016298-03	Oil Pan	41	M-15	GP-019925-00	Needle Clamp	13	C-37	GP-021390-00	Solenoid Cushion Rubber	29	G-65
GP-016299-00	Oil Pan Gascket	41	M-16	GP-019931-01	Needle Bar Guide Plate	13	C-24	GP-021391-00	Roller Shaft(L) Bearing Guide	21	E-16
GP-016300-00	Bed Cover(Upper)	7	A-12	GP-019932-00	Needle Frame Guide	13	C-17	GP-021394-00	Bushing(F)	13	C-43
GP-016301-00	Bobbin Winder Driving Wheel	9	B-18	GP-019933-00	Needle Feed Link	13	C-16	GP-021396-00	Bushing(R)	13	C-45
GP-016303-01	Puller Gear Cover(R)	21	E-36	GP-019934-00	Needle Frame Shaft	13	C-21	GP-021398-02	Thread Trimming Cam	27	G-46
GP-016304-00	Puller Gear Cover(L)	21	E-34	GP-019936-01	Presser Bar Lifter Arm	19	D-65	GP-021399-02	Needle Feed Shaft	13	C-1

Index

Parts No.	Name of Parts	Page	Ref.No.	Parts No.	Name of Parts	Page	Ref.No.	Parts No.	Name of Parts	Page	Ref.No.
GP-021512-00	Solenoid Cord Rubber Bushing	29	G-64	GP-025009-00	Belt Cover A	9	B-52	GP-035047-00	Tension Release Lever	27	G-35-1
GP-021514-00	Rubber Cap	7	A-28	GP-025011-00	Belt Cover B	9	B-53	GP-035476-00	Tension Release Lever Roller Base	27	G-35-2
GP-021515-00	Rubber Cap	7	A-29	GP-025015-00	Arm Thread Guide	39	L-14	GP-035856-01	Sensor Bracket	9	B-36
GP-021516-00	Rubber Cap	7	A-30	GP-025102-00	Belt Cover Inesrt	9	B-54	PN-000311-01	Needle Frame Pin	13	C-29
GP-021517-00	Rubber Cap	41	M-17	GP-025137-00	Presser Foot(B)	17	D-54	PN-000326-00	Plunger Pin	27	G-34
GP-021518-00	Oil rejector	41	M-7	GP-025144-00	Roller(L)B	21	E-18	PN-000334-00	Thread Release Pin	39	L-13
GP-021520-01	Thread Holder Base	27	G-12	GP-025146-01	Roller(U)	17	D-50	PN-000446-00	Thread Trimming Cam Roller Pin	29	G-67
GP-021521-00	Moving Mes Ass'y Spacer	27	G-7	GP-025147-01	Roller(U)	17	D-49	PN-000499-00	Spring Pin	33	I-34
GP-021522-00	Cushion Rubber	41	M-20	GP-025148-01	Roller(U)	17	D-51	RI-000040-00	Bobbin Winder Action Ring	37	K-7
GP-021601-00	Lower Shaft Bushing(F) Sponge	41	M-18	GP-025149-00	Presser Foot Bracket(B)	17	D-33	RI-000068-00	O-Ring	41	M-8
GP-021602-00	Lower Shaft Bushing(F) Felt	41	M-19	GP-025170-01	Presser Foot Shaft(B)	17	D-45	RI-000113-00	C-Ring	29	G-69
GP-021603-00	Needle Feed Driven Pulley	13	C-47	GP-025171-01	Roller Shaft(B)	17	D-42	SC-000078-00	Screw	9	B-33
GP-021603-00	Needle Feed Driven Pulley	21	E-20	GP-025508-00	Model Mark(KM-360J-7M)	7	A-23	SC-000209-00	Screw(M5×P0.8)	15	C-103
GP-021604-00	Puller Moving Pulley	21	E-22	GP-025509-00	Model Mark(KM-360J-7E)	7	A-24	SC-000330-00	Screw	41	M-33
GP-021605-00	Needle Feed Moving Pulley	13	C-49	GP-025510-00	Hemmer(L)	33	I-13	SC-000646-01	Solenoid Lever Stud	29	G-63
GP-021606-00	Puller Driven Motor Bracket	21	E-24	GP-025511-00	Hemmer(R)	33	I-15	SC-000647-00	Presser Bar Cylinder Stud	19	D-73
GP-021679-00	Puller Driven Motor Cover	21	E-38	GP-026451-03	Upper shaft	9	B-1	SC-000648-00	Moving Mes Ass'y Stud	27	G-8
GP-021701-00	Needle Feed Sensor Slit	13	C-53	GP-027472-00	Tension Release Cable Holder	19	D-105	SC-000649-00	Roller Bearing Support Bolt	21	E-19
GP-021703-00	Needle Feed Sensor Setting Plate	13	C-55	GP-027932-01	Bubber Cap(A)	7	A-42	SC-000650-00	Presser Lifter Connecting Bar Stud	17	D-17
GP-021750-00	Cushion Ruber	27	G-52	GP-027933-00	Bubber Cap(A)	7	A-43	SC-000651-00	Tension Release Lever Ass'y Stud	27	G-36
GP-021784-01	Link Cam	9	B-6	GP-028061-00	Impeller	41	M-41	SC-000657-00	Lower Shaft Oil Cap Screw	25	F-10
GP-021833-00	Presser Adjusting Bar	19	D-76	GP-028062-03	Needle Plate	27	G-1	SC-000659-00	Screw	13	C-25
GP-021834-00	Presser Adjusting Spring	19	D-77	GP-028063-00	Hook Cover Base	7	A-15	SC-000659-00	Screw	15	C-100
GP-021891-00	Idler Base	15	C-94	GP-028094-02	Pulley	9	B-30	SC-000689-00	Hook Holder Bolt	25	F-9
GP-021892-00	Idler Shaft	15	C-95	GP-028103-01	Feed Adjusting Button	15	C-90	SC-000743-00	Screw	27	G-2
GP-021894-00	Idler Bracket	13	C-6	GP-028285-02	Stud Screw(1/8" n=40)	17	D-40	SC-000758-00	Feed Adjusting Wheel Screw	15	C-89
GP-022388-00	Knee Lifter Lever Stud	19	D-78	GP-028286-02	Presser Foot Spring	19	D-109	SC-001083-00	Screw	27	G-10
GP-022624-00	Thread Stand Ass'y	43	N-14	GP-028337-00	Change Gear Sticker	23	E-66	SC-001083-03	Screw	27	G-4
GP-023208-00	Idler Pulley	15	C-96	GP-028383-00	Sticker	11	B-59	SC-001263-00	Screw	27	G-14
GP-023283-00	Lower Shaft Oil Supply Pipe B Ass'y	41	M-27	GP-028394-00	Wire Guide	19	D-107	SC-0104-5607	Screw	15	C-77
GP-023284-00	Nipple for Lower Shaft oil Supply	41	M-25	GP-028521-01	Solenoid Sticker(S1)	35	J-22	SC-0104-5607	Screw	17	D-3
GP-023284-00	Nipple for Lower Shaft oil Supply	41	M-28	GP-028522-01	Solenoid Sticker(S2)	35	J-23	SC-0104-5607	Screw	17	D-8
GP-023626-00	Rubber Packing	41	M-62	GP-028523-01	Solenoid Sticker(S3)	35	J-24	SC-0104-5607	Screw	17	D-27
GP-023671-00	Stud	13	C-14	GP-028524-01	Solenoid Sticker(S4)	35	J-25	SC-0104-5607	Screw	25	F-3
GP-023686-00	Change Gear D	21	E-49	GP-028565-01	Needle Bar	13	C-33	SC-0104-5607	Screw	25	F-5
GP-023687-00	Needle Feed Shaft Arm	15	C-75	GP-028924-02	Hammer Shaft	33	I-22	SC-0104-5607	Screw	25	F-7
GP-023688-01	Needle Feed Connecting Rod	15	C-78	GP-028934-00	Hammer Shaft Base	33	I-23	SC-0104-5607	Screw	25	F-16
GP-023694-00	Bevel Gear Shaft	21	E-42	GP-029023-01	Knee Lifter Connecting Crunlc	19	D-111	SC-0104-5607	Screw	29	G-59
GP-023699-00	Puller Driven Shaft	21	E-43	GP-029248-01	Stud Screw(1/8" n=40)	19	D-110	SC-0104-5607	Screw	33	I-27
GP-023704-00	Puller Gear Bracket	21	E-2	GP-029927-00	Needle Bar Thread Guide	13	C-34	SC-0104-5607	Screw [11/64" n=40]	37	K-6
GP-023706-02	Feed Adjusting Wheel Base	15	C-79	GP-030303-01	Hammer Shaft Spring	33	I-25	SC-0104-567	Screw	13	C-15
GP-023708-02	Upper shaft	9	B-2	GP-030304-00	Hammer Shaft Base B	33	I-24	SC-0105-7500	Screw	13	C-28
GP-023773-00	Gear Case Oil Seal	25	F-22	GP-031725-00	Oil Guage	41	M-11	SC-0105-7500	Screw	15	C-71
GP-023804-01	Thread Trimming Cam Roller	29	G-66	GP-031847-00	Tube(S1A)	35	J-27	SC-0105-7500	Screw	21	E-9
GP-023805-00	Screw	27	G-38	GP-031848-00	Tube(S1B)	35	J-28	SC-0105-7500	Screw	23	E-64
GP-023861-03	Hook Cover Handle	7	A-17	GP-031849-00	Tube(S2A)	35	J-29	SC-0105-7500	Screw	27	G-20
GP-023919-00	Puller Driven Motor Bracket Support	21	E-26	GP-031850-00	Tube(S2B)	35	J-30	SC-0105-7500	Screw [M4×P0.7]	37	K-15
GP-023920-01	Bed Hinge Plate	7	A-32	GP-031851-00	Tube(S3A)	35	J-31	SC-0120-1230	Screw [9/64" n=40]	39	L-6
GP-024027-00	Change Gear A	21	E-46	GP-031852-00	Tube(S3B)	35	J-32	SC-0120-1230	Screw [9/64" n=40]	39	L-8
GP-024028-00	Change Gear B	21	E-47	GP-031853-00	Tube(S4A)	35	J-33	SC-0110-1230	Screw	33	I-33
GP-024029-00	Change Gear C	21	E-48	GP-032431-01	Pulley	9	B-49	SC-0123-1230	Screw	9	B-9
GP-024029-00	Change Gear C(Z=30)	43	N-24	GP-033721-00	Feed Adjusting Slide Supporter	15	C-102	SC-0124-7400	Screw	9	B-10
GP-024030-00	Change Gear E	21	E-50	GP-034116-00	Hammer Operation Rod A Stud	33	I-35	SC-0130-1230	Screw [1/8" n=40]	37	K-12
GP-024030-00	Change Gear E(Z=34)	43	N-25	GP-034117-00	Hammer Operation Rod Link Stud	33	I-36	SC-0150-2500	Screw(15/64" n=28)	9	B-50
GP-024031-00	Change Gear F	21	E-51	GP-034118-00	Hammer Operation Rod B Stud	33	I-37	SC-0162-5607	Screw	15	C-66
GP-024032-00	Change Gear G	21	E-52	GP-034119-00	Knee Lifter Shaft	33	I-38	SC-0162-5607	Screw	21	E-29
GP-024160-01	Thread Trimming Main Lever	27	G-45	GP-034120-00	Knee Lifter A	33	I-39	SC-0164-2700	Screw	13	C-13
GP-024410-00	Upper Shaft Worm	23	E-59	GP-034121-00	Hammer Operation Link B	33	I-40	SC-0164-2700	Screw	13	C-38
GP-024411-00	Worm	23	E-61	GP-034122-00	Hammer Operation Link A	33	I-41	SC-0164-2700	Screw	13	C-42
GP-024467-01	Feed Adjusting Wheel	15	C-88	GP-034123-00	Hammer Operation Rod B	33	I-42	SC-0164-2700	Screw	13	C-48
GP-024477-00	Worm Wheel Shaft	21	E-56	GP-043124-00	Knee Lifter Spring	33	I-44	SC-0164-2700	Screw	13	C-50
GP-024480-00	Worm Wheel Shaft Bracket	21	E-57	GP-034126-00	Knee Lifter Base	33	I-45	SC-0164-2700	Screw	13	C-52

Index

Parts No.	Name of Parts	Page	Ref.No.	Parts No.	Name of Parts	Page	Ref.No.	Parts No.	Name of Parts	Page	Ref.No.
SC-0164-2700	Screw	15	C-64	SC-0528-1230	Screw	39	L-10				
SC-0164-2700	Screw	17	D-52	SC-0528-1230	Screw	41	M-38				
SC-0164-2700	Screw	21	E-7	SC-0531-2302	Screw	17	D-31				
SC-0164-2700	Screw	21	E-21	SC-0531-2302	Screw	41	M-5				
SC-0164-2700	Screw	21	E-23	SC-0542-1230	Screw(SM4.36-40)	15	C-105				
SC-0164-2700	Screw	21	E-33	SC-0543-2302	Screw	7	A-13				
SC-0164-2700	Screw	21	E-53	SC-0543-2302	Screw	7	A-21				
SC-0164-2700	Screw	23	E-67	SC-0543-2302	Screw	13	C-56				
SC-0164-2700	Screw(M5×L5)	29	G-68	SC-0543-2302	Screw	19	D-104				
SC-0164-2700	Screw(M5×P0.8)	15	C-104	SC-0543-2302	Screw	21	E-14				
SC-0164-2700	Screw(M5×P0.8)	43	N-26	SC-0543-2302	Screw	41	M-53				
SC-0183-2700	Screw	13	C-12	SC-0543-2302	Screw [9/64" n=44, L=5.5]	41	M-59				
SC-0183-2700	Screw	21	E-4	SC-308-2700	Screw	9	B-21				
SC-0183-2700	Screw	27	G-42	SC-A129-4515	Screw	25	F-26				
SC-0183-2700	Screw	27	G-51	SC-A129-4515	Screw	25	F-32				
SC-0183-2700	Screw	29	G-55	SC-A131-4522	Screw	13	C-35				
SC-0188-1230	Screw(5/16" n=24)	9	B-51	SC-A131-4522	Screw	17	D-36				
SC-0211-7500	Screw	21	E-35	SC-A131-4522	Screw	17	D-39				
SC-0211-7500	Screw	21	E-37	SC-A131-4522	Screw	41	M-9				
SC-0211-7500	Screw	21	E-39	SC-A174-1230	Screw	11	B-58				
SC-0211-7500	Screw	23	E-58	SC-A174-4122	Screw	7	A-8				
SC-0212-7400	Screw	27	G-39	SC-A174-4122	Screw	7	A-11				
SC-0215-1230	Screw	7	A-5	SC-A174-4122	Screw	17	D-56				
SC-0305-5607	Screw	13	C-18	SC-A174-4122	Screw	29	G-57				
SC-0307-1230	Screw	27	G-31	SC-A174-4122	Screw	31	H-2				
SC-0308-4517	Screw	21	E-55	SC-A308-4517	Screw	15	C-76				
SC-0308-4517	Screw	27	G-47	SC-A308-4517	Screw	21	E-41				
SC-0314-1800	Screw	19	D-108	SC-A308-4517	Screw	23	E-60				
SC-0317-2700	Screw	9	B-7	SC-A308-4517	Screw	23	E-62				
SC-0317-2700	Screw	9	B-14	SC-A320-4222	Screw	31	H-7				
SC-0317-2700	Screw	13	C-3	SFAM-600-002	Motor-Hollow	9	B-26				
SC-0317-2700	Screw	13	C-5	SN-000176-00	Roller Base Nut	27	G-35-3				
SC-0317-2700	Screw	15	C-80	SN-0113-7400	Nut	27	G-40				
SC-0317-2700	Screw	17	D-34	SN-0121-7400	Nut	37	K-34				
SC-0317-2700	Screw	19	D-64	STT24A-00001	Solenoid Ass'y	27	G-53				
SC-0317-2700	Screw	25	F-28	WS-000073-00	Washer for Bobbin Winder Driving Shaft	37	K-24				
SC-0317-2700	Screw	25	F-30	WS-000213-00	Knee Lifter Connecting Crank Shaft Washer	17	D-12				
SC-0317-2700	Screw	27	G-44	WS-000214-00	Needle Feed Shaft Washer	13	C-9				
SC-0317-2700	Screw	39	L-12	WS-000215-00	Driving Rod Plate Washer	27	G-32				
SC-0317-2700	Screw [15/64" n=28, L=7.5]	9	B-31	WS-000216-00	Tension Release Plate Ass'y Washer	17	D-20				
SC-0325-3800	Bolt	7	A-27	WS-000229-00	Presser Bar Lifter Lever Washer	19	D-80				
SC-0325-3800	Screw	41	M-54	WS-000241-00	Bevel Gear Washer	21	E-44				
SC-0328-8670	Fixed Bolt	21	E-27	WS-000242-00	Change Gear Washer	21	E-45				
SC-0328-8670	Fixing Bolt	35	J-15	WS-000243-00	Feed Adjusting Wheel Washer	15	C-85				
SC-0329-4111	Fixed Bolt	21	E-25	WS-000248-00	Feed Adjusting Wheel Wave Washer	15	C-86				
SC-0347-1230	Screw	41	M-21	WS-000270-00	Spring Wahser	7	A-19				
SC-0361-1230	Screw	25	F-17	WS-000376-00	Hammer Operation Link Washer	33	I-46				
SC-0498-3710	Screw	9	B-56		C-Ring	15	C-97				
SC-0507-1230	Screw	9	B-12		Indler Bearing	15	C-98				
SC-0507-1230	Screw	13	C-44		Needle	13	C-36				
SC-0507-1230	Screw	13	C-46		Needle	43	N-3				
SC-0512-1230	Screw	13	C-54		Oil Hose	41	M-29				
SC-0512-1230	Screw	41	M-51		Oil Hose	41	M-34				
SC-0512-1230	Screw [11/64" n=40]	39	L-4		Puller Gear Bracket Bearing	21	E-3				
SC-0519-2302	Bolt	7	A-18		Screw	9	B-55				
SC-0519-2302	Bolt	7	A-20		Screw	13	C-7				
SC-0519-2302	Screw [9/64" n=40]	37	K-36		Screw	15	C-99				
SC-0523-1230	Screw	9	B-35		Screw	33	I-18				
SC-0528-1230	Screw	17	D-24								
SC-0528-1230	Screw	19	D-68								
SC-0528-1230	Screw	19	D-98								
SC-0528-1230	Screw	19	D-106								