



---

# **PARTS BOOK**

---

## **SC 7900**

4-Needle Flat Seamer Machine

PME-091126

# Information

## A. Parts Book 구성

### Structure of Part Book

① **A** Arm, Bed & Machine Body Mechanism  
팔, 침대 및 의장품 관계

②

③

④ ⑤ ⑥ ⑦ ⑧ ⑨

Ref. No.	Parts No.	Note	Name of Parts	품명	Q'ty	Assembly No.
A-1	01-12841-03		Arm	어ーム	1	
A-2	01-10073-06		Bed	침대	1	
A-4	01-02120-00		Face Plate	면판	1	
A-5	01-02044-12M		Face Plate Gasket	면판 가스켓	1	
A-6	01-1174-4122		Screw(L)184*mm2	볼트	10	
A-7	01-11011-1230		Rubber Cap For Face Plate	면판 고무캡	2	
A-9	01-00194-1200		Caution S/Screw	경고 스크류	1	
A-8	01-011973-00		Warning Label Cover	경고 라벨 피막	1	
A-10	01-02020-01		Screw(S)184*mm2	볼트(S)184*mm2	1	
A-11	01-017460-00		Bed Cover(L)	침대 커버(좌)	1	
A-12	01-01441-120M		Bed Cover Gasket(L)	침대 커버 가스켓(좌)	1	
A-13	01-02643-1200		Screw(L)184*mm2	볼트(S)184*mm2	14	
A-13-1	45-0244-1000		Washer	와셔	2	
A-14	01-01750-00		Bed Cover(S)	침대 커버(우)	1	
A-15	01-01746-120M		Bed Cover Gasket(S)	침대 커버 가스켓(우)	1	
A-16	4402011-100M		Tank Rubber Cap	고유 탱크 고무캡	1	
A-17	01-02074-1230		Thread Guide with Three Poles	세극을 실입지(조)	15Set	
A-19	01-02030-1200		Thread Guide(S)	실입 실리(조)	1	
A-20	01-02030-1200		Thread Guide(M)	실입 실리	3	
A-21	01-02000-1230		Thread Guide(S)	실입 실리	1	
A-22	01-016431-00		Arm Thread Guide Assy	어ーム 실입지 실리(조)	1	
A-23	11-01750-7500		Nut	너트	1	
A-24	01-02030-120M		Thread Guide(S)	실입 실리(우)	1	
A-25	0102070-100M		Siicon Tank Assy	실리콘 탱크 완성(조)	15Set	
A-26	0102060-100M		Siicon Tank	실리콘 탱크 완성	1	
A-27	0102060-100M		Siicon Oil Window	실리콘 유량 창	1	
A-28	0102400-100M		Siicon Part	실리콘 완성 부품	1	
A-29	01-13051-00		Part for Siicon Oil Supply	실리콘 유량 창 부품	1	
A-30	01-016431-00		Screw(L)184*mm2	볼트(S)	1	
A-31	04-02410-1230		Arm Upper Part Rubber Cap	어ーム 상부 고무 캡	2	
A-33	04-02030-120M		Needle Bar Rubber Cap	바늘봉 고무 캡	1	
A-34	01-04201-042L		Rubber Cap(L)	고유 캡(좌)	4	
A-35	44-02111-7400		Rubber Cap(S)	고유 캡(우)	7	
A-36	01-01750-120M		Bed Rubber	침대 고무	1	
A-37	01-019817-00		Welder (Sticker)(M)	인쇄 스티커-중형물	1	
A-38	01-019818-00		M Welder (Sticker)(S)	인쇄 스티커-소형물	1	
A-39	01-019819-00		L Welder (Sticker)(L)	인쇄 스티커-대형물	1	
A-40	01-019820-00		K Welder (Sticker)(K)	인쇄 스티커-대형물	1	
A-41	01-02110-1200		Tap Cover	타프 커버	2	
A-42	01-02114-120M		Tap Cover	타프 커버	1	
A-43	41-01814-120M		Bobbin Winder Assy	실리(조)	15Set	
A-44	41-02010-120M		Bobbin Winder (Base Assy)	실리(베이스(조))	1	
A-45	41-02054-120M		Bobbin Winder (Shaft)	실리(샤프트)	1	
A-46	01-02000-00	S. Other	Sticker(S)	태그 스티커	1	
A-47	01-02000-7500		Screw(S)	볼트(S)	1	
A-48	41-02000-120M		Bobbin Winder	실리(완성)	1	
A-49	01-0104-550T		Screw(L)184*mm2	볼트(S)	2	
A-50	41-02000-120M		Bobbin Winder Action Ring	실리(작용링)	1	
A-51	41-02000-120M		Bobbin Winder Shaft Rubber Ring	실리(샤프트 고무링)	1	
A-52	41-02000-120M		Bobbin Winder Label	실리(라벨)	1	
A-53	41-02010-120M		Bobbin Winder Adjusting Plate	실리(조정판)	1	
A-54	01-01100-1230		Screw(L)187*mm2	볼트(S)	1	
A-55	01-01194-1200		Washer	와셔	1	
A-56	41-02010-120M		Bobbin Winder Lower Shaft	실리(하부 샤프트)	1	
A-57	41-020140-120M		Bobbin Winder Adjusting Term	실리(조정판)	1	
A-58	01021500-4113		Screw(M)184*mm2	볼트(S)	1	

Note: P=Heavy Material(중형물), M=Medium Material(중형물), M=Plumetic Heavy Material(대형물) 후물물  
L=Light Material(대형물), K=Roll Material(롤트), EL=Large Shuttle Model(대 시틀 모델)

①:관계 별 고유 코드

Unique code by mechanism

②:관계 별 고유 명칭

Unique name by mechanism

③:관계도

Explode view

④Ref.No.:파트별 고유 식별 번호

Unique identification number by part

⑤Parts No.:고유 제품 코드

Unique Product code

Ex)

구분 Category	Code	비고 remarks
구 부품 Old part	01-030C-1230	
신 부품 New Part	AS-000000-00	조(組) 파트 Set parts
	GP-000000-00	기구적 파트 Instrumental parts
	EP-000000-00	전기적 파트 Electrical parts

⑥Note:공지사항 표기 및 메모

Refers to notice and memo

⑦품

명:파트의 고유 품명

Name of Part:Unique name of parts

⑧Q'ty :파트의 수량

The number of parts

⑨Assembly no.:조(組) 파트의 식별 번호

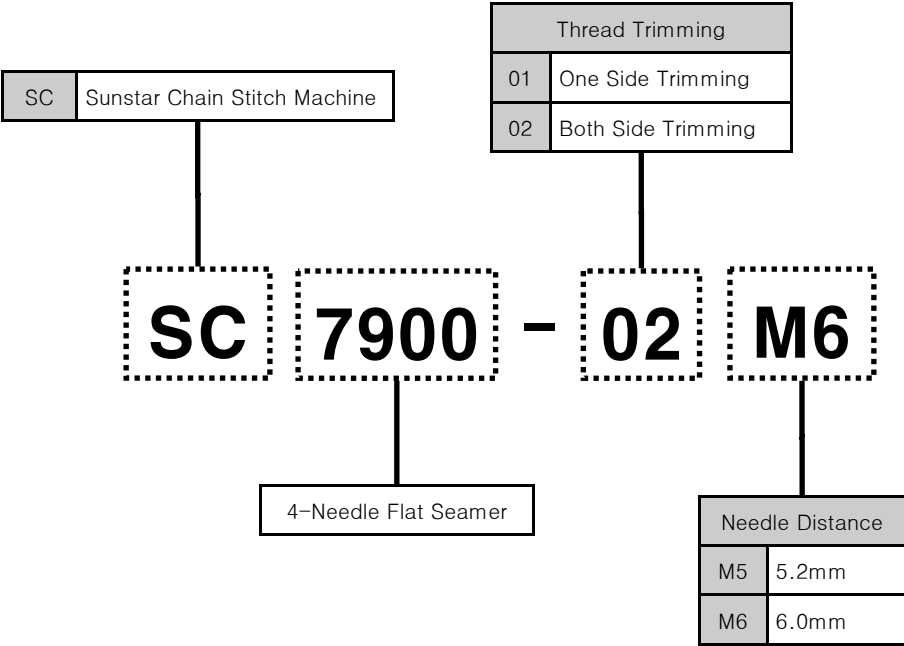
Unique identification number by set part

# Warning

1. 조에 속한 파트는 개별 조립 시 제품의 파손 또는 재봉 불량일 수 있어 해당 파트에 대한 주문 시에는 조 품목으로만 구입이 가능합니다.
2. 본 책자는 Parts Book으로 제작되었으므로 매뉴얼로 사용 불가합니다.
3. 사전 예고 없이 사양이 변경 될 수도 있습니다.

1. The parts classified as ass'y items may cause damage to the machine or bad sewing when they are separately assembled. Hence, when they are ordered, they can be purchased as ass'y items only.
2. This is a parts book. It cannot be used as a manual.
3. Parts are Subject to change in Design Without Prior Notice.

# MACHINE MODEL



# CONTENTS

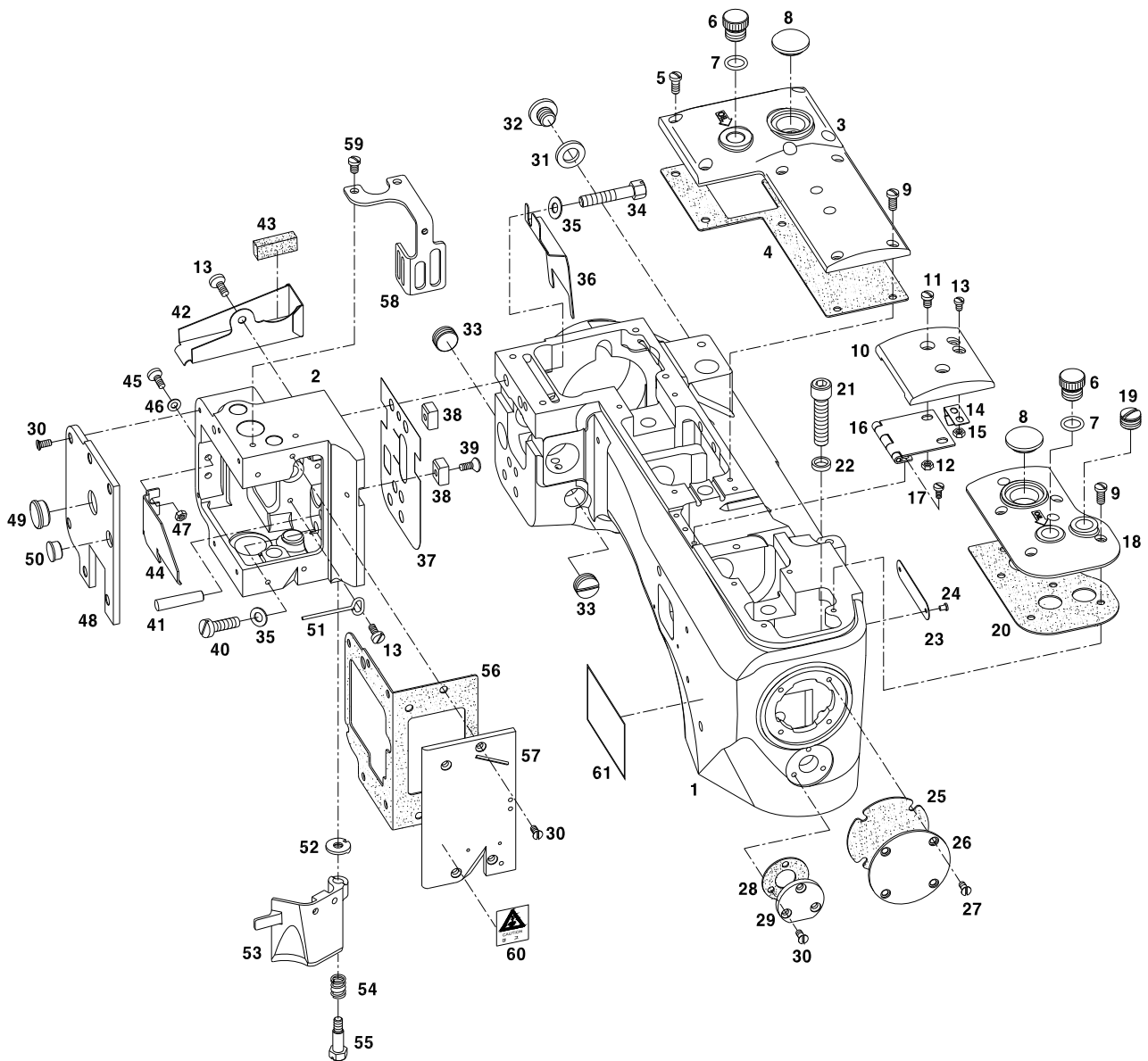
## 목 차

A	Arm & Machine Body Mechanism 암 & 외장 관계	●.....	6
B	Bed & Machine Body Mechanism 베드 & 외장 관계	●.....	10
C	Thread Tension Mechanism 실조절 장치 관계	●.....	12
D	Bushing Mechanism 붓싱 관계	●.....	16
E	Upper Shaft & Needle Bar Mechanism 상축 및 바늘대 관계	●.....	18
F	Presser Foot Mechanism 누름대 관계	●.....	22
G	Upper Knife Mechanism 상메스 관계	●.....	26
H	Looper Driving Mechanism 루퍼 구동 관계	●.....	28
I	Feed Driving Mechanism 피드 구동 관계	●.....	30
J	Feed Adjusting Mechanism 피드 조절 관계	●.....	32
K	Lubrication Mechanism 급유 관계	●.....	34
L	Hand Pulley Mechanism 핸드 풀리 관계	●.....	38
M	Table Mechanism 테이블 관계	●.....	40
N	Suction Mechanism 흡입 관계	●.....	42
O	Cutting Mechanism (Option) 컷팅 관계 (선택 사양)	●.....	44
P	Accessories Mechanism 액세서리 관계	●.....	46
	Index 인덱스	●.....	48

# A

## Arm & Machine Body Mechanism

### 암 & 외장 관계



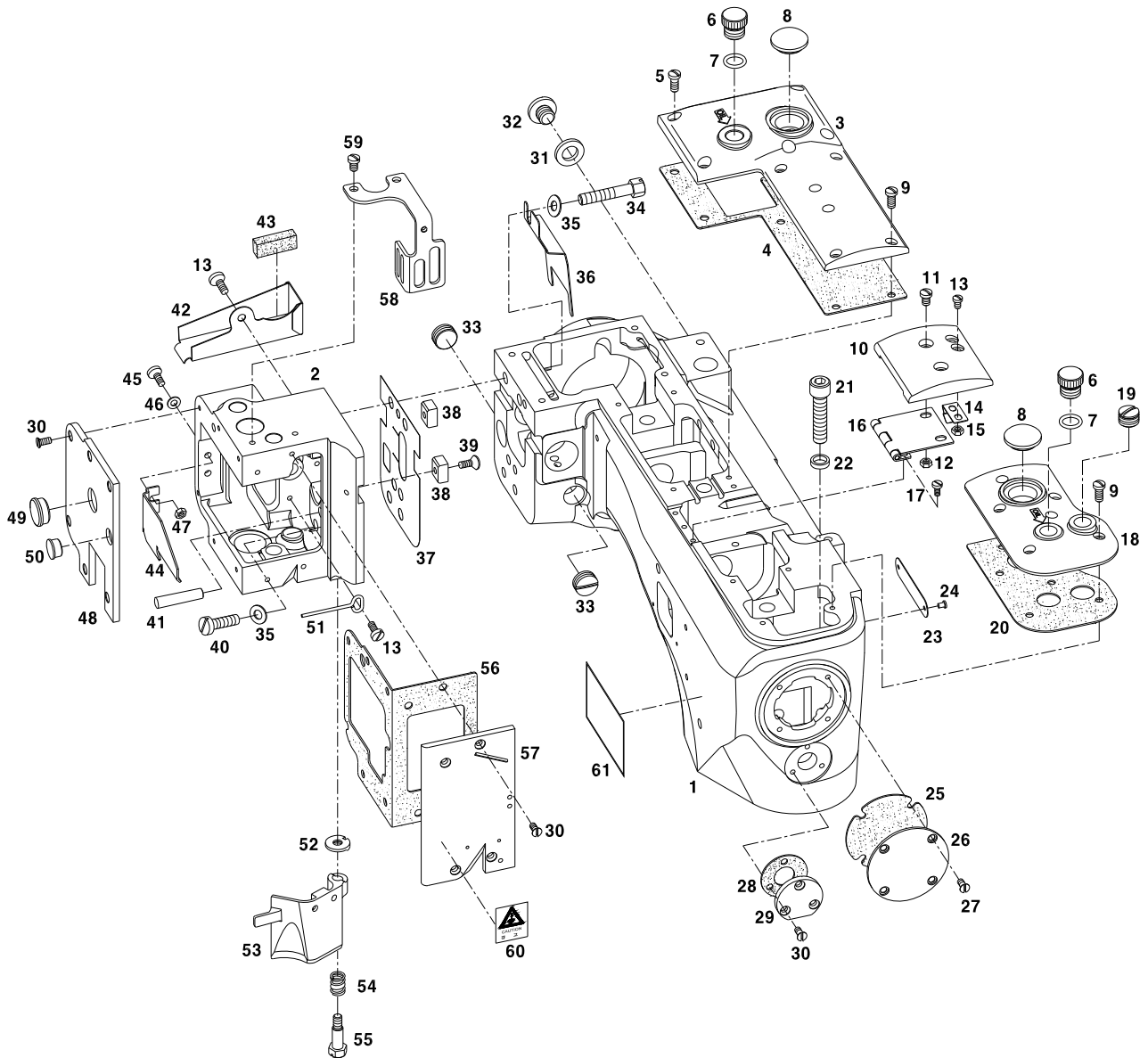


Ref. No.	Parts No.	Note	Name of Parts	품 명	Q'ty	Applied Period
A-1	GP-044966-02		Arm	아암	1	
A-2	GP-044968-01		Head	헤드	1	
A-3	GP-045087-01		Top Cover(Rear)	윗뚜껑(후)	1	
A-4	GP-045079-01		Top Cover(Rear) Gasket	윗뚜껑(후) 가스켓	1	
A-5	SC-0179-3710		Top Cover(Rear) Screw	윗뚜껑(후) 고정나사(11/64" n=40, L=10)	5	
A-6	SC-001633-01		Top Cover Oil Plug Screw	윗뚜껑 오일 마개 나사(M12×P1.75, L=9)	2	
A-7	RI-000167-00		O-Ring	O-링(P10)	2	
A-8	GP-001317-00		Oil Window	유창	2	
A-9	SC-0528-1230		Top Cover(Front) Screw	윗뚜껑(전) 고정나사(9/64" n=40, L=10)	10	
A-10	GP-045071-00		Top Cover(Middle)	윗뚜껑(중)	1	
A-11	10S060S-306H		Top Cover(Middle) Screw	윗뚜껑(중) 고정나사(11/64" n=40, L=6.5)	2	
A-12	SN-0101-1600		Top Cover(Middle) Nut	윗뚜껑(중) 고정너트(11/64" n=40)	2	
A-13	SC-000253-00		Top Cover(Middle) Spring Screw	윗뚜껑(중) 스프링 고정나사(9/64" n=40, L=6)	4	
A-14	SP-000049-01		Top Cover(Middle) Spring	윗뚜껑(중) 스프링	1	
A-15	11-017C-7507		Top Cover(Middle) Spring Nut	윗뚜껑(중) 스프링 고정너트(9/64" n=40)	2	
A-16	GP-045800-01		Top Cover(Middle) Hinge	윗뚜껑(중) 경첩	1	
A-17	SC-000239-00		Top Cover(Middle) Hinge Screw	윗뚜껑(중) 경첩 고정나사(9/64" n=40, L=6)	3	
A-18	GP-045086-01		Top Cover(Front)	윗뚜껑(전)	1	
A-19	SC-001634-00		Top Cover(Front) Plug Screw	윗뚜껑(전) 마개 나사(M12×P1.75, L=7)	1	
A-20	GP-045077-00		Top Cover(Front) Gasket	윗뚜껑(전) 가스켓	1	
A-21	SC-001676-00		Screw	암베드 결합 나사(M8×P1.25, L=35)	3	
A-22	WS-000562-00		Washer	암베드 결합 나사 와셔	3	
A-23	01-035P-1370		Serial Number Plate	시리얼 번호판	1	
A-24	01-035P-7400		Rivet	시리얼 번호판 고정리벳	2	
A-25	GP-045082-01		Arm End Cover Gasket	암후면 커버 가스켓	1	
A-26	GP-045085-01		Arm End Cover	암후면 커버	1	
A-27	SC-A301-4119		Screw(9/64" n=40)	암후면 커버 잠나사	4	
A-28	GP-045083-00		Looper Lever Shaft Cover Gasket	루퍼 레버 축 커버 가스켓	1	
A-29	GP-045084-01		Looper Lever Shaft Cover	루퍼 레버 축 커버	1	
A-30	SC-0145-3800		Cover Screw	커버 고정나사(9/64" n=40, L=6)	13	
A-31	RI-000006-00		Drain Hole Seal	오일배출구 고무링	1	
A-32	SC-000096-00		Screw for Drain Hole	오일배출구 나사(3/8" n=24)	1	
A-33	SC-001674-00		Head Plug Screw	헤드 마개 나사(M14×P1)	2	
A-34	SC-001707-02		Head Screw	헤드 결합 나사(1/4" n=28)	2	
A-35	40-007W-1600		Head Screw Washer	헤드 결합 나사 와셔	3	
A-36	GP-045694-00		Crank Shaft Oil Guard	크랭크축 오일 막이	1	
A-37	GP-045460-00		Head Oil Defender	헤드 오일 막이	1	
A-38	PN-000752-01		Head Key	헤드 키	2	
A-39	01-008S-2070		Head Key Screw	헤드 키 고정나사(9/64" n=40)	2	
A-40	SC-0253-7400		Screw	고정나사(1/4" n=28)	1	
A-41	PN-000753-01		Taper Pin (φ6 L18 1/50)	테이퍼 핀(φ6 L18 1/50)	1	
A-42	GP-045692-01		Oil Guard	나이프구동 연결축 오일가드	1	
A-43	GP-045072-00		Oil Guard Felt	나이프구동 연결축 오일가드 펠트	1	
A-44	GP-045689-01		Hook Driving Rod Oil Guard	훅 구동축 오일 가드	1	
A-45	SC-000253-00		Screw	훅 구동축 오일 가드 고정나사(9/64" n=40)	2	
A-46	WS-000582-00		Washer	훅 구동축 오일 가드 고정나사 와셔	2	
A-47	01S034S-306H		Nut	너트(9/64" n=40)	2	
A-48	GP-045074-01		Head Cover(Left)	헤드 커버(좌)	1	
A-49	01-054R-300G		Head Cover(Left) Rubber Cap(L)	헤드 커버(좌) 고무마개(대)	1	
A-50	01-007R-8130		Head Cover(Left) Rubber Cap(S)	헤드 커버(좌) 고무마개(소)	1	
A-51	GP-045447-01		Oil guide Wire	오일 가이드 와이어	1	
A-52	WS-000561-00		Chip Guard Washer	칩 안내 와셔	1	
A-53	GP-045698-01		Chip Guard	칩 안내	1	
A-54	SP-000050-01		Chip Guard Spring	칩 안내 스프링	1	
A-55	SC-001675-00		Chip Guard Screw	칩 안내 고정나사(M5×P0.8)	1	
A-56	GP-045081-01		Head Cover Gasket	헤드 커버 가스켓	1	
A-57	GP-045075-01		Head Cover(Front)	헤드 커버(전)	1	

# A

## Arm & Machine Body Mechanism

### 암 & 외장 관계



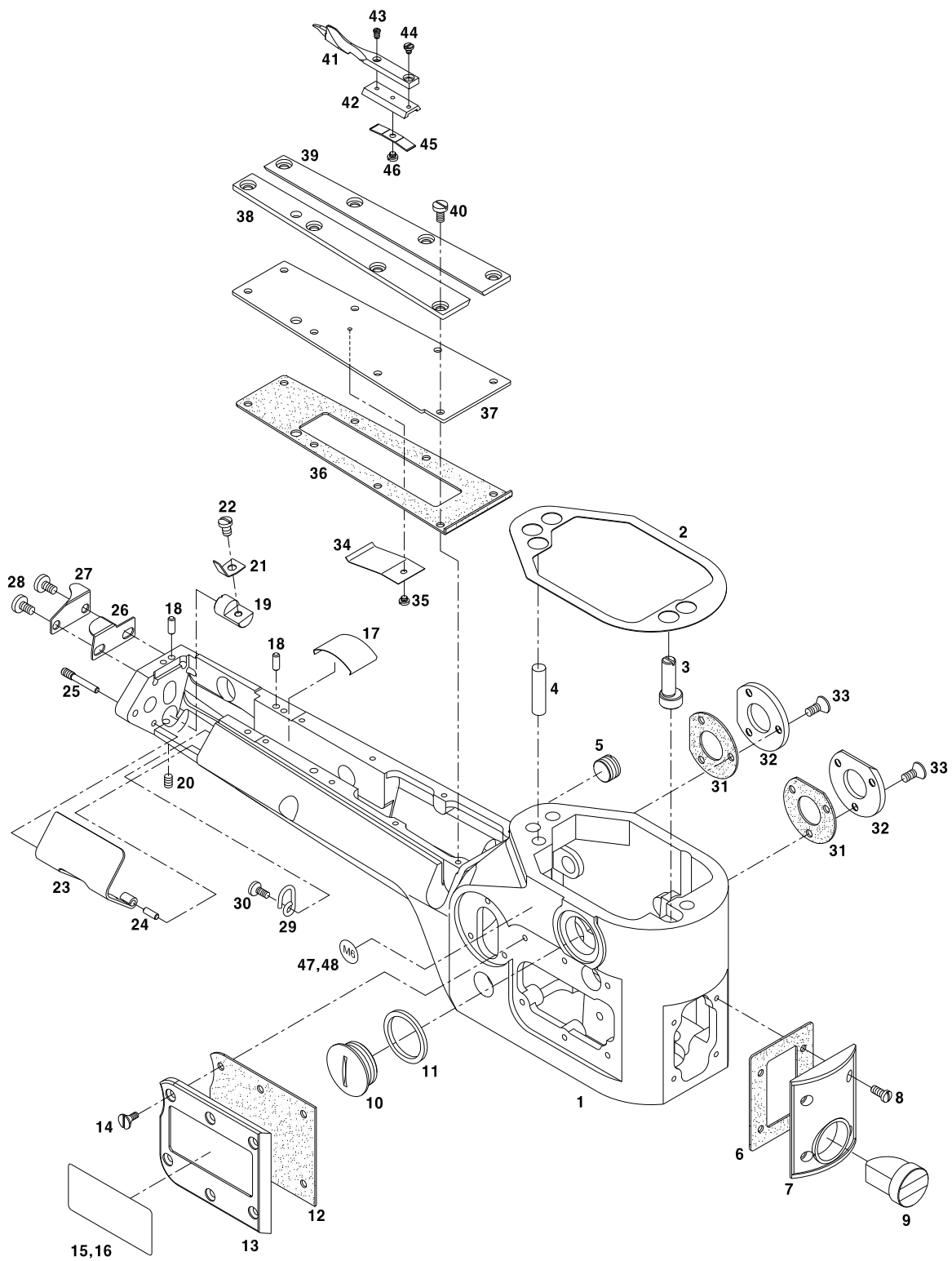




# B

## Bed & Machine Body Mechanism

베드 & 외장 관계

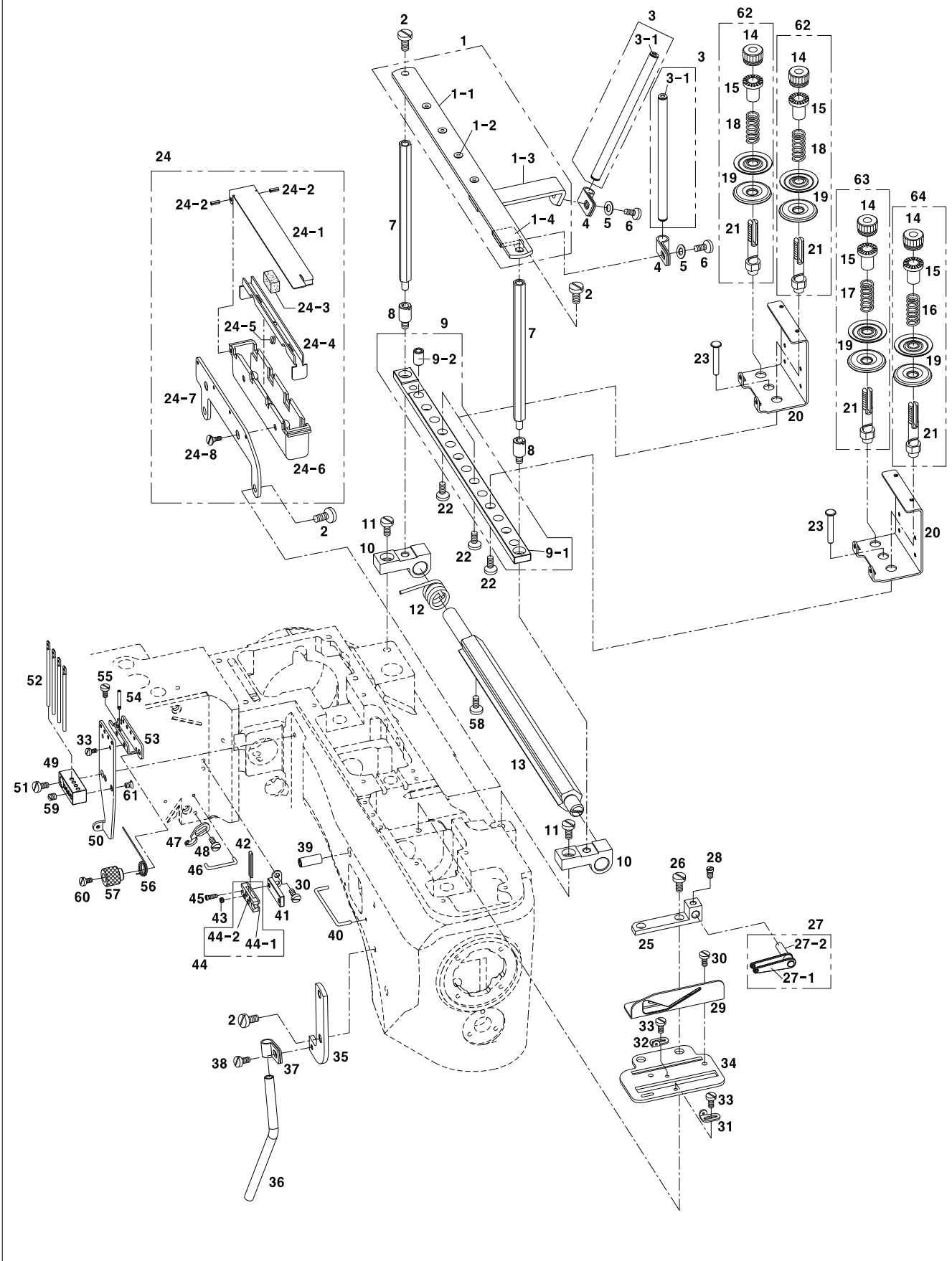




# C

## Thread Tension Mechanism

### 실조절 장치 관계



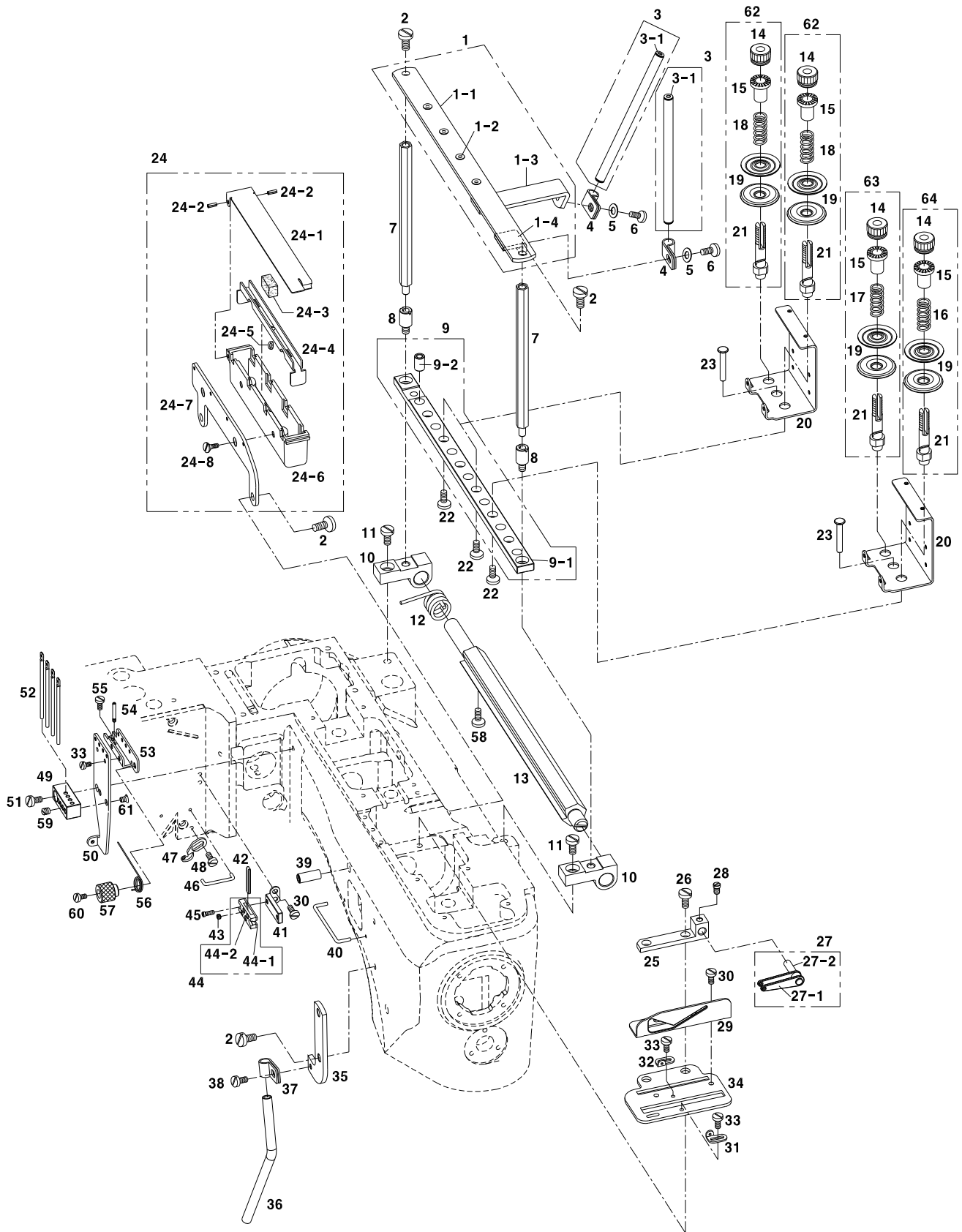


Ref. No.	Parts No.	Note	Name of Parts	품 명	Q'ty	Applied Period
C-1	AS-015559-01		Thread Guide Support Ass'y	실안내 지지대 (조)	1Set	
C-1-1	GP-045703-01		Thread Guide Plate	실안내 판	1	
C-1-2	05452CM-A001		Thread Guide Bushing	실안내 붓싱	4	
C-1-3	GP-045701-00		Thread Guide Pipe Support A	실안내 파이프 지지대 A	1	
C-1-4	GP-045702-00		Thread Guide Pipe Support B	실안내 파이프 지지대 B	1	
C-2	SC-0175-1230		Screw (11/64" n=40)	실안내 지지대 (조) 찰나사	6	
C-3	AS-015516-00		Thread Guide Pipe(Ass'y)	실안내 파이프(조)	2	
C-3-1	05452CM-A001		Thread Guide Bushing	실안내 붓싱	4	
C-4	GP-001595-00		Pipe Holder	파이프 잡이	2	
C-5	02-019W-1230		Washer	파이프 잡이 찰나사 와셔	2	
C-6	10-058S-2077		Screw (9/64" n=40)	파이프 잡이 찰나사	2	
C-7	GP-045425-00		Thread Guide Plate Support	실가이드 판 지지대	2	
C-8	GP-045391-00		Support Bar	지지봉	2	
C-9	AS-015963-00		Thread Release Support Ass'y	실 늦추기 지지대 (조)	1Set	
C-9-1	GP-045423-02		Thread Release Support	실 늦추기 지지대	1	
C-9-2	BS-000022-01		Thread Release Pin Bushing	실 늦추기 핀 붓싱	7	
C-10	GP-045390-01		Support Basket	지지 브라켓	2	
C-11	SC-0532-2302		Screw(15/64" n=28)	브라켓 고정 나사(15/64" n=28)	2	
C-12	SP-000047-01		Thread Release Shaft Spring	실 늦추기 축 스프링	1	
C-13	ST-000078-00		Tension Release Shaft	실 늦추기 축	1	
C-14	40-704C-1230		Tension Adjusting Nut	실조절장치 너트	6	
C-15	GP-046841-00		Tension Spring Stopper	실조절장치 스프링 스토퍼	6	
C-16	SP-000046-00		Looper Thread Tension Spring	루퍼실 장력 스프링	1	
C-17	SP-000044-00		Top Cover Thread Tension Spring	윗실 장력 스프링	1	
C-18	SP-000045-00		Needle Thread Tension Spring	바늘실 장력 스프링	4	
C-19	GP-000908-01		Tension Disc	실조절장치 접시	12	
C-20	GP-045393-02		Disk Adjusting Plate	접시 조정 판	3	
C-21	ST-000079-01		Tension Post	실조절장치 축	6	
C-22	10-110S-300G		Screw(11/64" n=40)	실조절장치 축 찰나사	6	
C-23	PN-000745-01		Thread Release Pin	실 늦추기 핀	7	
C-24	AS-016197-00		Silicone Oil Tank Ass'y	실리콘 오일 탱크 (조)	1Set	
C-24-1	GP-045695-00		Silicone Oil Tank Lid	실리콘 오일 탱크 뚜껑	1	
C-24-2	PN-000777-00		Spring Pin	스프링 핀 (호칭경 Φ2 L=8)	2	
C-24-3	GP-045699-00		Felt	실리콘 오일 felt	4	
C-24-4	GP-045700-01		Silicone Oil Felt Bracket	실리콘 오일 felt 브라켓	1	
C-24-5			Oil Wick	실리콘 오일 felt 유심	1	
C-24-6	GP-045696-01		Silicone Oil Tank	실리콘 오일 탱크	1	
C-24-7	GP-045697-00		Silicone Oil Tank Bracket	실리콘 오일 탱크 브라켓	1	
C-24-8	SC-A301-4119		Screw (9/64" n=40)	실리콘 오일 탱크 찰나사	2	
C-25	GP-045404-00		Thread Take-Up Holder	실채기 홀더	1	
C-26	SC-0307-1230		Screw(3/16" n=32)	홀더 고정나사	2	
C-27	AS-015515-00		Looper Thread Take-Up Ass'y	루퍼 실 실채기(조)	1	
C-27-1	GP-045386-00		Looper Thread Take-Up	루퍼 실 실채기	2	
C-27-2	ST-000071-00		Take-Up Shaft	실채기 축	1	
C-28	SC-000950-00		Screw(9/64" n=40)	실채기 고정 나사(9/64" n=40)	1	
C-29	GP-045514-00		Looper Thread T-U Guide	루퍼 실 실채기 가이드	1	
C-30	SC-A131-4522		Screw(1/8" n=44)	가이드 고정 나사(1/8" n=44)	4	
C-31	GP-045444-00		Looper Thread Take-Up Eyelet(F)	루퍼 실채기 아일렛(전)	1	
C-32	GP-045443-00		Looper Thread Take-Up Eyelet(R)	루퍼 실채기 아일렛(후)	1	
C-33	SC-000270-00		Screw(3/32" n=56)	아일렛 고정 나사(3/32" n=56)	4	
C-34	GP-045387-01		Guide Support Plate	가이드 지지판	1	
C-35	GP-045649-00		Looper Thread Guard	루퍼실 가이드	1	
C-36	GP-045648-01		Looper Thread Tube	루퍼실 가이드 튜브	1	
C-37	GP-001595-00		Pipe Holder	루퍼실 가이드 튜브 잡이	1	
C-38	SC-0531-2302		Screw (9/64" n=40)	루퍼실 가이드 튜브 잡이 찰나사	1	
C-39	GP-045402-00		Thread Pie(U)	실 파이프(상)	1	
C-40	GP-045388-00		Looper Thread Guide(U)	루퍼 실 가이드(상)	1	

# C

## Thread Tension Mechanism

### 실조절 장치 관계

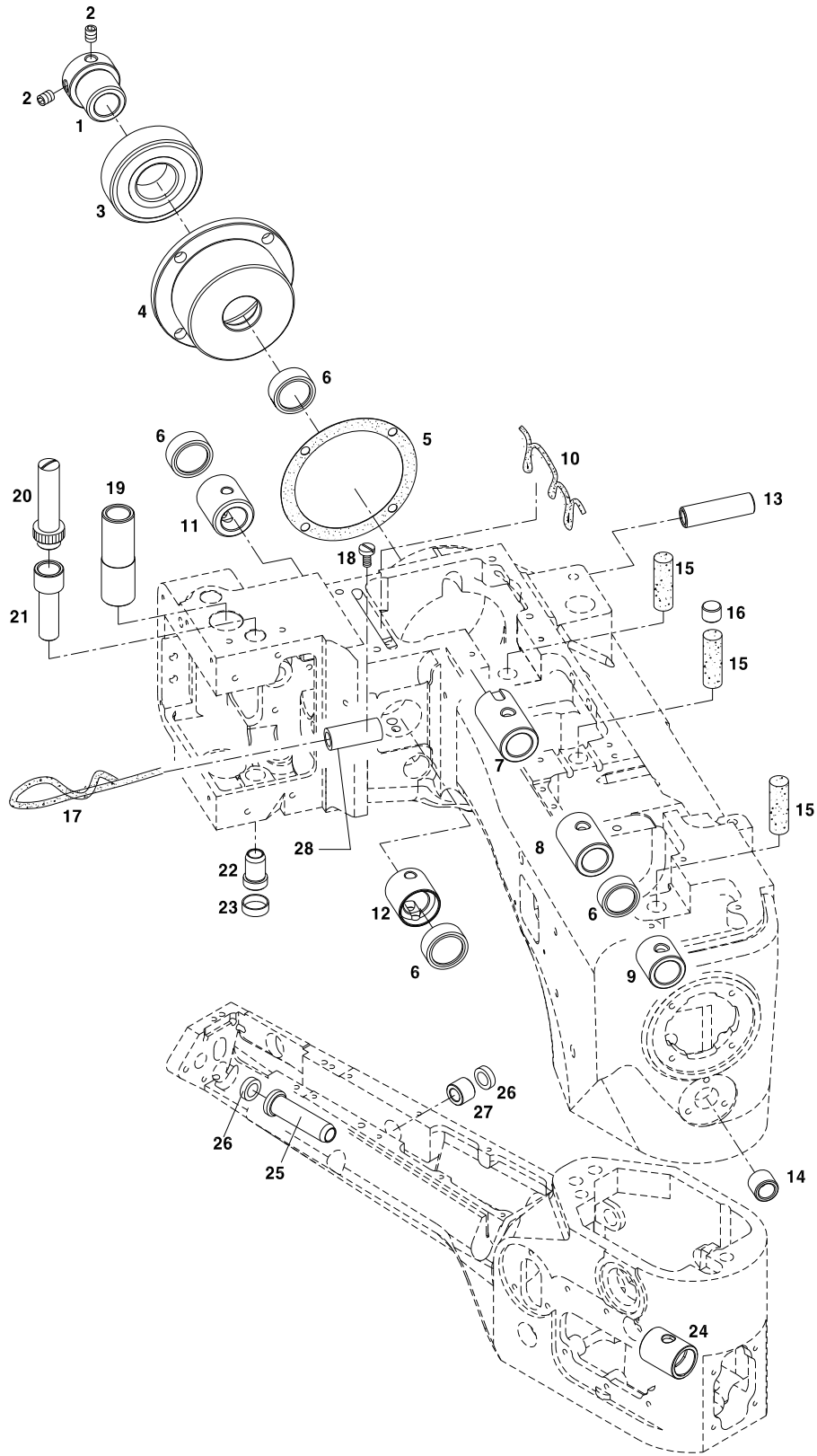




# D

## Bushing Mechanism

붓싱 관계

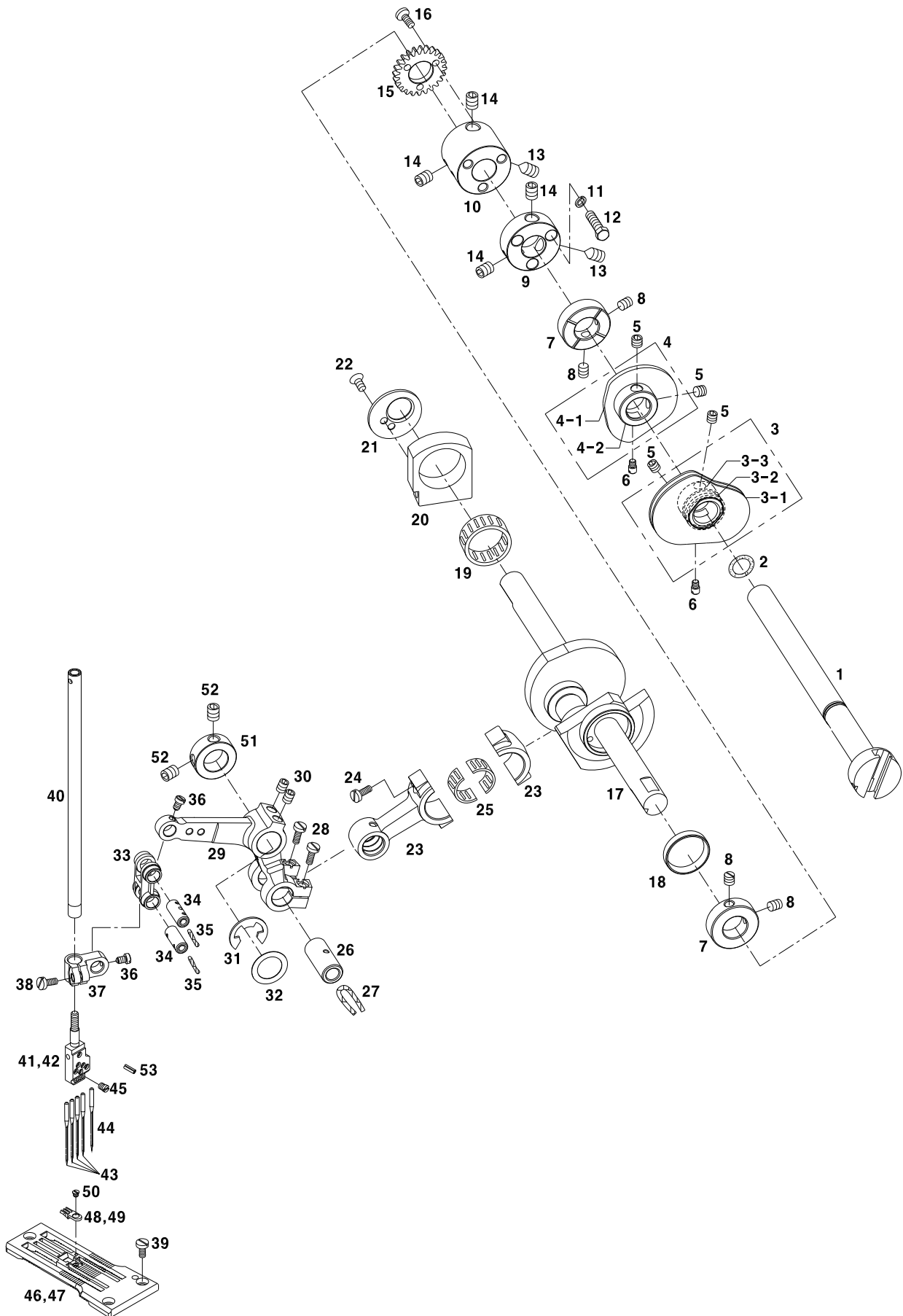






## Upper Shaft & Needle Bar Mechanism

### 상축 및 바늘대 관계

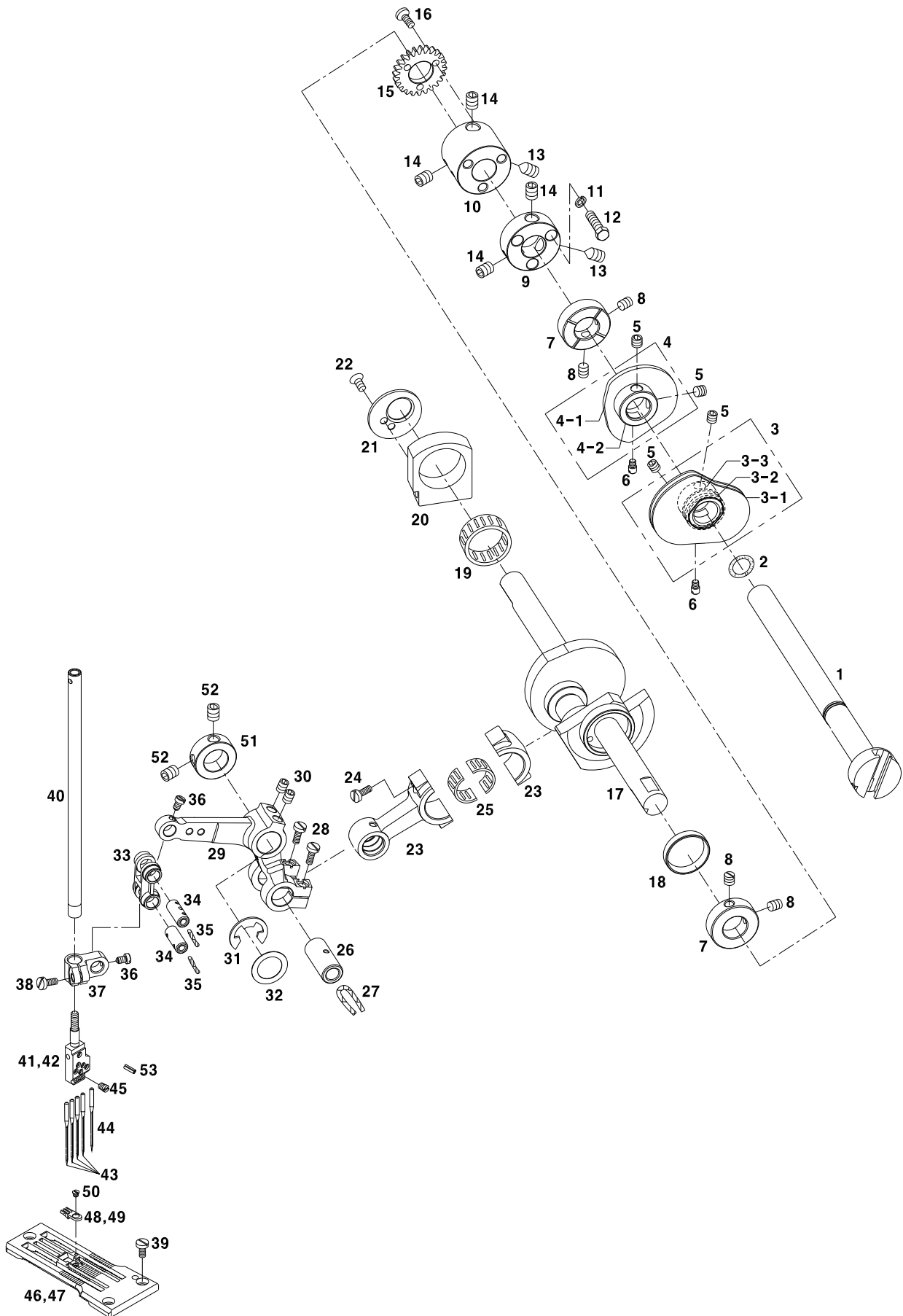




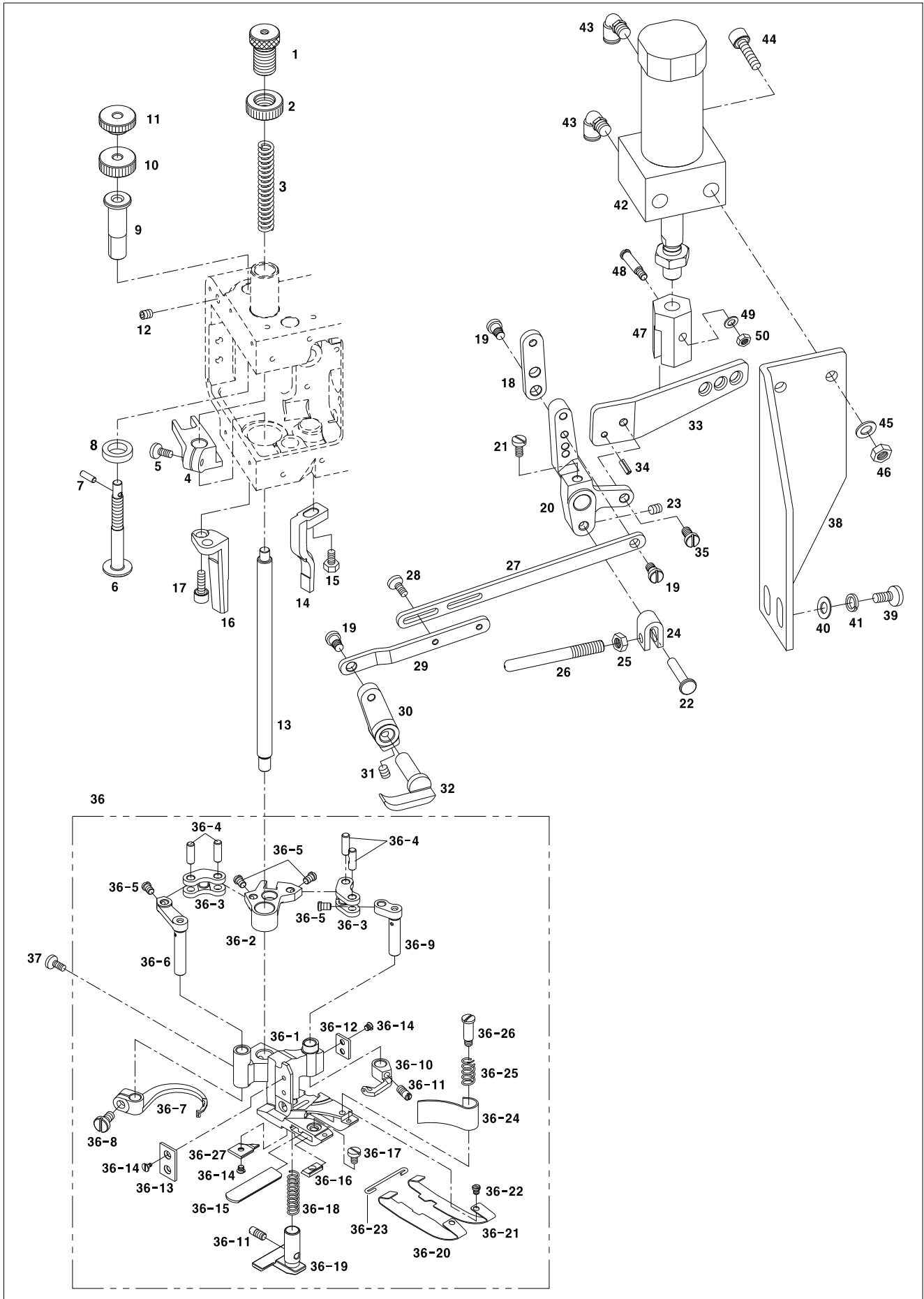
Ref. No.	Parts No.	Note	Name of Parts	품 명	Q'ty	Applied Period
E-1	ST-000061-01		Main Shaft	주축	1	
E-2	RI-000168-00		O-Ring(P12.5)	주축 O링 (P12.5)	1	
E-3	AS-015465-01		Looper Thread Take-Up Ass'y	루퍼 실채기 (조)	1Set	
E-3-1	GP-045141-01		Looper Thread Take-up Plate	루퍼 실채기 판	2	
E-3-2	GP-045142-01		Looper Thread Take-up Spacer	루퍼 실채기 스페이서	1	
E-3-3	CL-000325-01		Looper Thread Take-up Collar	루퍼 실채기 카라	1	
E-4	AS-015464-01		Top Cover Thread Take-Up Ass'y	상커버 실채기 (조)	1Set	
E-4-1	GP-045140-01		Top Cover Thread Take-up Plate	상커버 실채기 판	1	
E-4-2	CL-000324-01		Top Cover Thread Take-up Collar	상커버 실채기 카라	1	
E-5	SC-000173-00		Screw (M5XP0.8)	실채기 (조) 고정나사	4	
E-6	11-024S-2077		Screw (1/8" n=40)	실채기 셋팅 위치 나사	2	
E-7	CL-000326-00		Main Shaft Collar	주축카라	2	
E-8	SC-0542-1230		Screw (11/64" n=40)	주축카라 첩나사	4	
E-9	GP-045144-01		Main Shaft Coupling_A	주축 커플링 A	1	
E-10	GP-045145-01		Main Shaft Coupling_B	주축 커플링 B	1	
E-11	51A056S-81H2		Washer	주축 커플링 결합나사 와셔	3	
E-12	SC-001644-00		Screw (11/64" n=40)	주축 커플링 결합나사	3	
E-13	SC-A117-4417		Screw (1/4" n=40)	주축 커플링 첩나사 A	2	
E-14	SC-A308-4517		Screw (1/4" n=40)	주축 커플링 첩나사 B	4	
E-15	GR-000008-00		Pump Driving Gear	펌프 구동 기어	1	
E-16	SC-0142-2302		Screw (1/8" n=44)	펌프 구동 기어 첩나사	3	
E-17	ST-000077-02		Main Crank Shaft	주 크랭크 축	1	
E-18	RI-000160-01		Guide Ring for CrankShaft Lubrication	크랭크 축 급유 가이드 링	1	
E-19	BR-000354-00		Needle Bearing (KT202410)	구동샤프트 (우) 니들 베어링	1	
E-20	GP-045138-02		Carrier Hook Driving Rod (Right)	구동샤프트 (우)	1	
E-21	GP-045135-01		Retaining Plate for Needle Bearing	니들베어링 지지판	1	
E-22	SC-A301-4119		Screw (9/64" n=40)	니들베어링 지지판 첩나사	2	
E-23	GP-045136-01		NeedleBar Lever Connecting Rod	바늘대 레버 연결샤프트	1	
E-24	SC-0526-7600		Screw (3/16" n=28)	바늘대 레버 연결샤프트 결합나사	2	
E-25	BR-000355-00		Needle Bearing	바늘대 레버 연결샤프트 베어링	1Set	
E-26	PN-000738-00		Pin for NeedleBar Lever ConnectingRod	바늘대 레버 연결샤프트 핀	1	
E-27			Oil Wick	바늘대 레버 연결샤프트 핀 유심	1	
E-28	SC-000250-00		Screw (9/64" n=40)	바늘대 레버 연결샤프트 핀 첩나사	2	
E-29	GP-045441-01		NeedleBar Lever	바늘대 레버	1	
E-30	SC-0164-2700		Screw (M5XP0.8)	나이프 구동레버 첩나사	2	
E-31	SR-000004-00		Retaining Ring (E-Ring)	나이프 구동레버 멈춤링 (호칭경 10)	1	
E-32	RI-000158-01		Thrust Ring	나이프 구동레버 스러스트 링	1	
E-33	GP-045137-01		NeedleBar Connecting Link	바늘대 연결링크	1	
E-34	PN-000737-00		Pin for NeedleBar Connecting Link	바늘대 연결링크 핀	2	
E-35			Oil Wick	바늘대 연결링크 핀 유심	2	
E-36	SC-001641-01		Screw (1/8" n=44)	바늘대 연결링크 핀 첩나사	2	
E-37	GP-045139-01		Needle Bar Holder	바늘대 잡이	1	
E-38	SC-000253-00		Screw (9/64" n=40)	바늘대 첩나사	1	
E-39	SC-000239-00		Screw (9/64" n=40)	침판 첩나사	3	
E-40	NB-000001-01		NeedleBar	바늘대	1	
E-41	GP-045146-01		Needle Holder	바늘잡이 (5.2mm용)	1	
E-42	GP-046015-01		Needle Holder	바늘잡이 (6.0mm용)	1	
E-43	GP-035651-00		Needle (UY118GCS #10)	바늘	4	
E-44	GP-035745-00		Needle (UY 36211 FLG-1 #10)	리테이너 바늘	1	
E-45	SC-001642-00		Screw (3/32" n=56)	바늘 첩나사	5	
E-46	GP-045147-01		Needle Plate (5.2mm)	침판 (5.2mm용)	1	
E-47	GP-046014-01		Needle Plate (6.1mm)	침판 (6.0mm용)	1	
E-48	GP-045143-01		Stitch Plate Tongue(5.2mm)	침판 지침 (5.2mm용)	1	
E-49	GP-046016-01		Stitch Plate Tongue(6.1mm)	침판 지침 (6.0mm용)	1	
E-50	SC-001643-01		Screw (3/32" n=56)	침판 지침 첩나사	1	
E-51	10-002A-300G		Collar	나이프 구동레버 카라	1	
E-52	SC-0164-2700		Screw (M5XP0.8)	나이프 구동레버 카라 첩나사	2	

## Upper Shaft & Needle Bar Mechanism

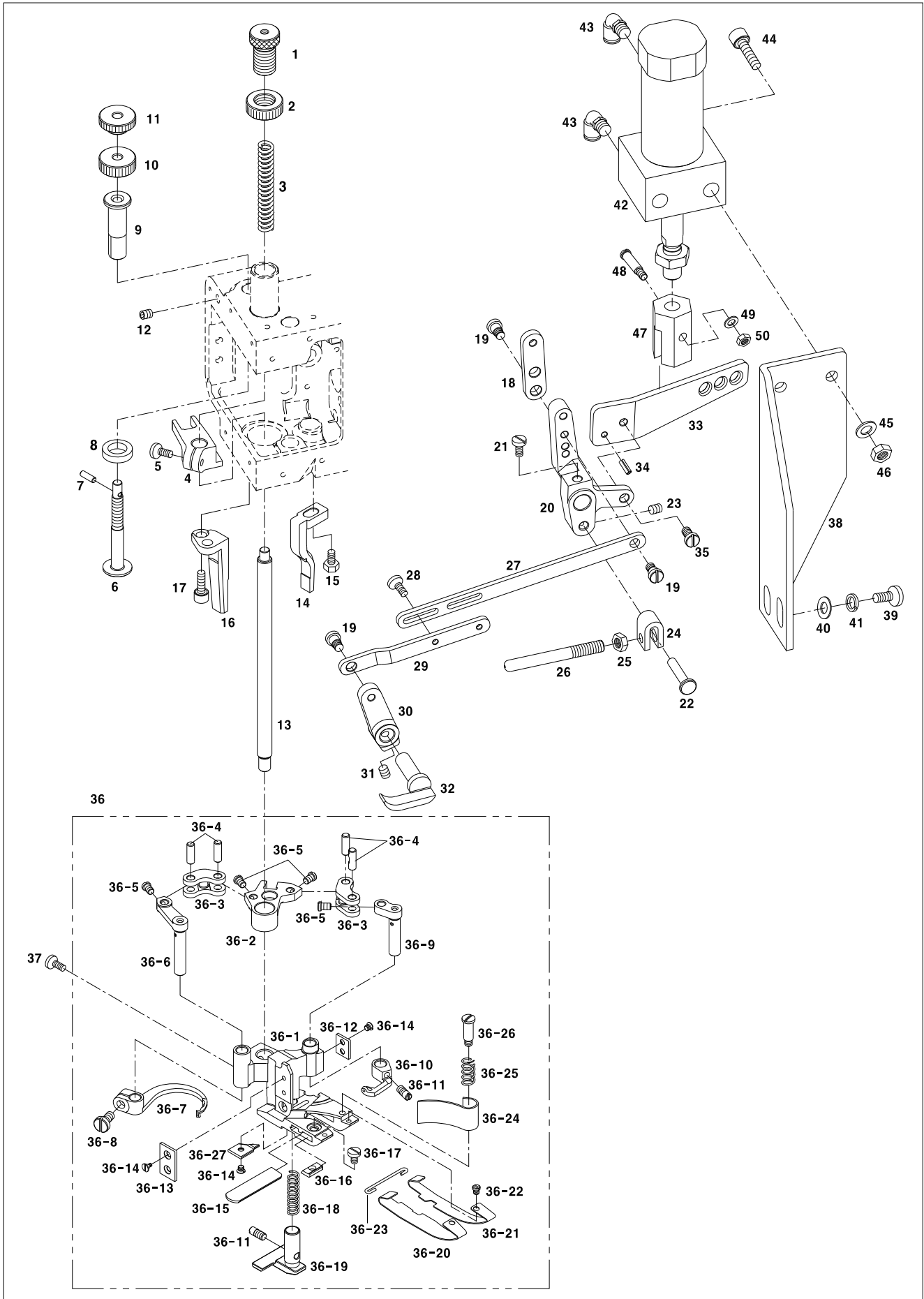
### 상축 및 바늘대 관계





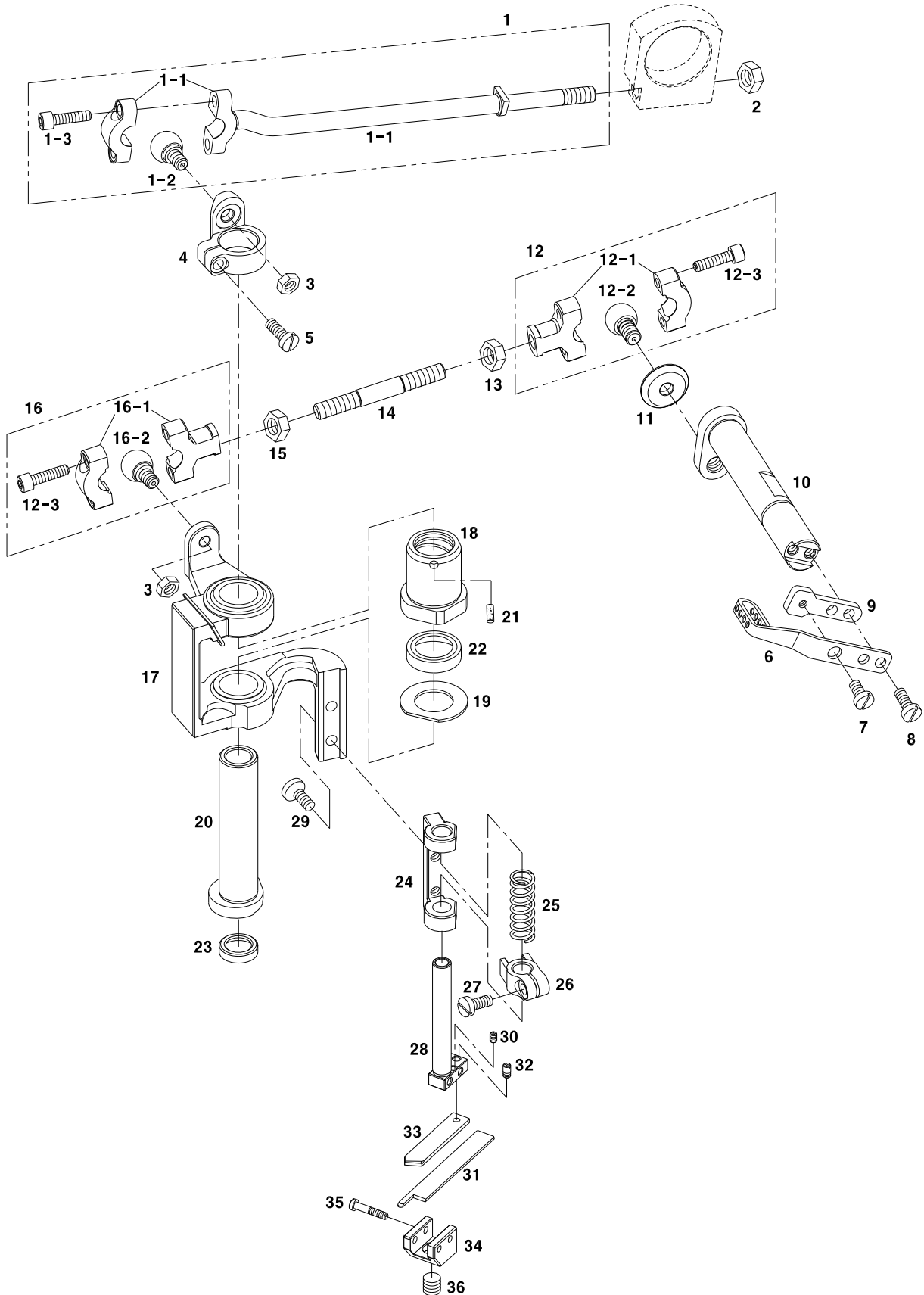


Ref. No.	Parts No.	Note	Name of Parts	품 명	Q'ty	Applied Period
F-1	SC-001640-01		Presser Adjusting Screw	누름대 조정 스크류(M12XP1)	1	
F-2	SN-000282-01		Presser Adjusting Screw Nut	누름대 조정 스크류 너트 (M12XP1)	1	
F-3	SP-000037-01		Presser Spring	압력 조절 스프링	1	
F-4	GP-045129-00		Presser Bar Connecting Bracket	누름대 연결 브라켓	1	
F-5	SC-0179-3710		Presser Bar Connecting Bracket Screw	누름대 연결 브라켓 침나사 (11/64" n=40)	1	
F-6	SC-001639-00		Presser Foot Adjusting Screw	노루발 조정 스크류(M6XP1)	1	
F-7	PN-000779-00		Spring Pin	스프링핀(호칭경 2, l=10)	1	
F-8	GP-045131-01		Connecting Bracket Cushion	연결 브라켓 쿠션	1	
F-9	GP-045130-00		Presser Bar Guide	누름대 가이드	1	
F-10	SN-000280-00		Presser Adjusting Lock Nut	압력조정 고정 너트	1	
F-11	SN-000281-00		Presser Adjusting Nut	압력 조정 너트	1	
F-12	SC-0317-2700		Presser Bar Guide Screw	누름대 가이드 침나사 (15/64" n=28)	1	
F-13	ST-000060-00		Presser Bar	누름대	1	
F-14	GP-045128-00		Presser Foot Guide (Right)	노루발 가이드(우)	1	
F-15	SC-0190-2700		Presser Foot Guide (Right) Screw	노루발 가이드(우) 침나사 (3/16" n=32 l=12)	1	
F-16	GP-045097-00		Presser Foot Guide (Left)	노루발 가이드(좌)	1	
F-17	18047SC-7113		Presser Foot Guide (Left) Screw	노루발 가이드(좌) 침나사 (M5XP0.8 l=15)	2	
F-18	GP-045089-00		Lifter Lever Plate	무릎올림 레버 플레이트	1	
F-19	SC-001635-00		Lifter Lever Stud Bolt	올림레버 단나사(3/16" n=32)	5	
F-20	GP-045090-00		Presser Bar Lifter Lever(Large)	누름대 올림레버(대)	1	
F-21	SC-0540-7600		Presser Bar Lifter Lever(Large) Screw	누름대 올림레버(대) 침나사 (15/64" n=28)	1	
F-22	PN-000736-00		Stop Plunger Pin	고정 플런저 핀	1	
F-23	SC-0164-2700		Stop Plunger Pin Screw	고정 플런저 핀 고정나사(M5XP0.8)	1	
F-24	GP-045365-01		Stopper Plunger	고정 플런저	1	
F-25	SN-0108-2302		Presser Bar Lifter Stop Plunger Nut	누름대 올림 고정 플런저 너트(1/4" n=24)	1	
F-26	GP-045134-00		Presser Bar Lifter Stop Plunger	누름대 올림고정 플런저	1	
F-27	GP-045133-00		Presser Foot Lifter Lever Link(Large)	누름대 올림레버 링크(대)	1	
F-28	SC-0502-2302		Lever Link(Large) Screw	누름대 올림레버 링크(대) 침나사(9/64" n=40)	2	
F-29	GP-045366-00		Presser Foot Lifter Lever Link(Small)	누름대 올림레버 링크(소)	1	
F-30	GP-045091-00		Presser Bar Lifter Lever(Small)	누름대 올림레버(소)	1	
F-31	SC-0164-2700		Presser Bar Lifter Lever(Small) Screw	누름대 올림레버(소) 침나사(M5XP0.8 l=5)	1	
F-32	GP-045095-00		Presser Bar Lifter Lever	누름대 올림레버	1	
F-33	GP-045132-00		Presser Foot Connecting Lever	무릎올림 연결 레버	1	
F-34	PN-000780-00		Spring Pin	스프링핀 (호칭경 3, l=10)	1	
F-35	02031SC-4113		Presser Foot Connecting Lever Screw	무릎올림 연결 레버 나사 (M5XP0.8 l=10)	1	
F-36	AS-016133-00		Presser Foot Ass'y	노루발(조) (5.2mm용)	1Set	
F-36-1	GP-045367-02		Presser Foot	노루발(5.2mm용)	1	
F-36-2	GP-045370-00		Thread Hook, Carrier Crank	실잡이 걸이 크랭크	1	
F-36-3	GP-045392-00		Thread Hook Driving Lever Link	실잡이 구동레버 링크	2	
F-36-4	PN-000741-01		Thread Hook Driving Lever Pin	실잡이 구동레버 핀	4	
F-36-5	SC-001654-00		Thread Hook, Carrier Crank Screw	윗실잡이, 걸이 크랭크 침나사 (3/32"n=56)	4	
F-36-6	GP-045385-01		Thread Carrier Driving Lever	실걸이 구동레버	1	
F-36-7	GP-045662-00		Top Cover Thread Hook	윗실잡이	1	
F-36-8	SC-001652-00		Top Cover Thread Hook Screw	윗실잡이 침나사 (9/64" n=40)	1	
F-36-9	GP-045384-01		Thread Hook Driving Lever	실잡이 구동레버	1	
F-36-10	GP-045654-00		Top Cover Thread Carrier	윗실걸이	1	
F-36-11	SC-001649-00		Double Presser Foot Screw	이중 노루발 침나사 (1/8" n=44)	2	
F-36-12	GP-045379-00		Presser Foot Right Plate	노루발 플레이트(우)	1	
F-36-13	GP-045378-00		Presser Foot Left Plate	노루발 플레이트(좌)	1	
F-36-14	SC-001653-00		Presser Foot Plate Screw	노루발 플레이트 침나사(3/32" n=56)	5	
F-36-15	GP-045369-00		Lower Knife	하메스	1	
F-36-16	GP-045368-01		Lower Knife Clamp	하메스 잡이	1	
F-36-17	SC-000252-00		Lower Knife Clamp Screw	하메스 잡이 침나사 (1/8" n=44)	1	
F-36-18	SP-000042-00		Double Presser Foot Spring	이중노루발 스프링	1	
F-36-19	GP-045374-01		Double Presser Foot	이중노루발	1	
F-36-20	GP-045373-00		Presser Foot Spring Plate A (Left)	노루발 스프링판 A (좌)	1	
F-36-21	GP-045375-00		Presser Foot Spring Plate A (Right)	노루발 스프링판 A (우)	1	





Ref. No.	Parts No.	Note	Name of Parts	품 명	Q'ty	Applied Period
F-36-22	SC-001650-00		Presser Foot Spring Plate A Screw	노루발 스프링판 A 짐나사 (3/32" n=56)	2	
F-36-23	GP-045376-00		Spring Plate Holder	스프링판 잡이	1	
F-36-24	GP-045377-01		Chip Guard	칩 안내	1	
F-36-25	SP-000043-00		Chip Guard Spring	칩 안내 스프링	1	
F-36-26	SC-001651-00		Chip Guard Stud Bolt	칩 안내 단나사 (1/8" n=44)	1	
F-36-27	GP-045383-01		Cloth Guide Plate	천가이드 판	1	
F-37	10-110S-300G		Presser Foot Screw	노루발 짐나사 (11/64" n=40)	1	
F-38	GP-046977-00		Cylinder connect Plate	실린더 연결 판	1	
F-39	SC-000234-00		Screw (M8XP1.25)	실린더 연결 판 짐나사	2	
F-40	01-038W-1230		Washer	실린더 연결 판 짐나사 평washer	2	
F-41	15095SW-3115		Washer	실린더 연결 판 짐나사 스프링 washer	2	
F-42	GP-032772-00		Air Cylinder	누름대 공압 실린더 (CM2RA32-25)	1	
F-43	49-001A-5030		Fitting	피팅	2	
F-44	15017SC-4113		Screw(M8xP1.25)	누름대 공압 실린더 짐나사	2	
F-45	09-025W-8270		Washer	누름대 공압 실린더 짐나사 washer	2	
F-46	19011SN-9311		Nut(M8XP1.25)	누름대 공압 실린더 너트	2	
F-47	GP-032471-00		Cylinder Knuckle	누름대 공압 실린더 너클	1	
F-48	10-022S-2077		Stud Screw(3/16" N=32)	단나사	1	
F-49	06-051W-7400		Washer	washer	1	
F-50	SN-0115-7400		Nut(3/16" N=32)	너트	1	



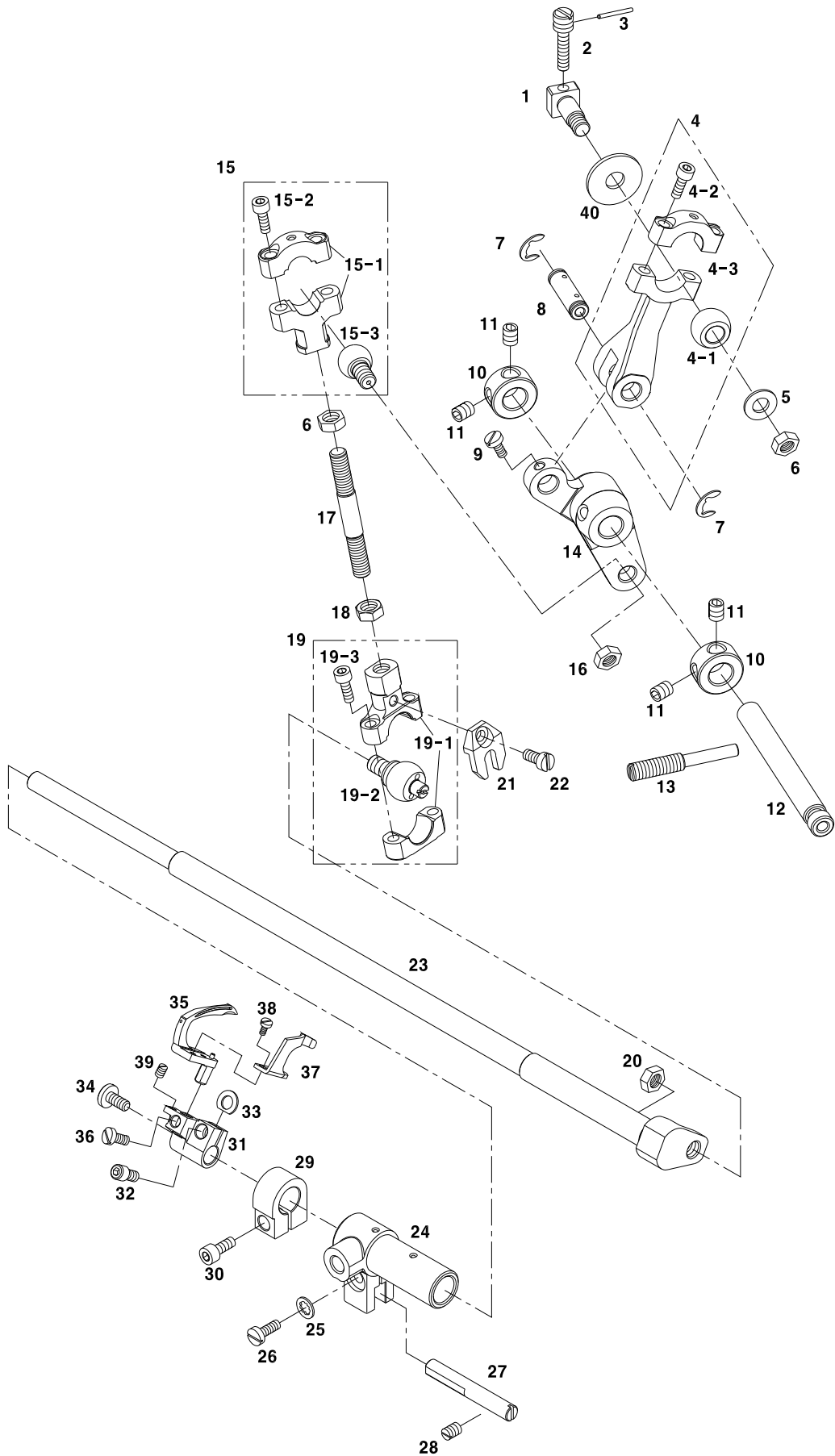


Ref. No.	Parts No.	Note	Name of Parts	품 명	Q'ty	Applied Period
G-1	AS-016209-00		Hook Driving Rod(L) Ass'y	훅 구동 롯드(좌) (조)	1Set	
G-1-1	GP-045118-01		Hook Driving Rod(L)	훅 구동 롯드(좌)	1	
G-1-2	GP-045850-00		RodBall	롯데 볼	1	
G-1-3	SC-0158-3710		Screw(9/64" n=40)	롯데 볼 고정 나사(9/64" n=40)	2	
G-2	SN-000046-00		Nut(7/32" n=32)	훅 구동 롯드(좌) 고정 너트(7/32" n=32)	1	
G-3	SN-0115-7400		Nut(3/16" n=32)	롯데 볼 고정 너트(3/16" n=32)	2	
G-4	GP-045851-01		Carrier Hook Holder	캐리어 훅 홀더	1	
G-5	SC-0158-3710		Screw(9/64" n=40)	홀더 고정 나사(9/64" n=40)	1	
G-6	GP-045631-00		Needle Thread Take-Up	바늘실 실채기	1	
G-7	SC-0158-3710		Screw(9/64" n=40)	실채기 고정나사A(9/64" n=40)	2	
G-8	SC-0365-3710		Screw(9/64" n=40)	실채기 고정나사B(9/64" n=40)	1	
G-9	GP-045108-01		Thread Take-Up Bracket	실채기 브라켓	1	
G-10	GP-045113-01		Knife Driving Lever	나이프 구동 레버	1	
G-11	WS-000548-02		Steady Washer	스태디 와셔	1	
G-12	AS-016210-00		Knife Driving Connecting(R) Ass'y	나이프 구동 연결(우) (조)	1Set	
G-12-1	GP-045116-01		Knife Driving Connecting(R)	나이프 구동 연결(우)	1	
G-12-2	GP-045115-02		Knife Driving Connecting Ball(R)	나이프 구동 연결 볼(우)	1	
G-12-3	SC-001664-00		Screw(M3.5×P0.6)	볼 고정 나사(M3.5×P0.6)	4	
G-13	SN-000047-00		Nut(7/32" n=32)	나이프 구동연결(우) 너트(7/32" n=32, 원나사)	1	
G-14	GP-045114-00		Knife Driving Connecting Rod	나이프 구동 연결 롯드	1	
G-15	SN-000046-00		Nut(7/32" n=32)	커넥션(좌) 고정 너트(7/32" n=32)	1	
G-16	AS-016211-00		Knife Driving Connecting(L) Ass'y	나이프 구동 연결(좌) (조)	1Set	
G-16-1	GP-045105-01		Knife Driving Connecting(L)	나이프 구동 연결(좌)	1	
G-16-2	GP-045106-00		Rod Ball(L)	롯데 볼(좌)	1	
G-17	GP-045630-03		Knife Holder Bracket	나이프 홀더 브라켓	1	
G-18	BS-000003-01		Upper Knife Bushing	상메스 붓싱	1	
G-19	RI-000157-01		Bushing Ring	붓싱 링	1	
G-20	GP-045119-02		Hook Driving Sleeve	훅 구동 슬리브	1	
G-21	GP-030140-00		Bushing Oil Felt	붓싱 급유 펠트	1	
G-22	GP-045705-00		Bushing Oil Seal	붓싱 오일 실	1	
G-23	GP-045706-00		Sleeve Oil Seal	슬리브 오일 실	1	
G-24	GP-045120-01		Knife Holder Shaft Support	나이프 홀더 축 지지대	1	
G-25	SP-000036-00		Knife Holder Spring	나이프 홀더 스프링	1	
G-26	GP-045111-01		Knife Holder Guide	나이프 홀더 가이드	1	
G-27	SC-0158-3710		SCrew(9/64" n=40)	가이드 접나사(9/64" n=40)	1	
G-28	ST-000056-01		Knife Holder Shaft	나이프 홀더 축	1	
G-29	SC-000253-00		SCrew(9/64" n=40)	지지대 고정나사(9/64" n=40)	2	
G-30	SC-001638-01		Setting Screw B(3/32" n=56)	셋팅 나사B(3/32" n=56)	1	
G-31	GP-045109-01		Upper Knife	나이프(상)	1	
G-32	SC-001637-01		Setting Screw A(3/32" n=56)	셋팅 나사A(3/32" n=56)	1	
G-33	GP-045110-01		Knife Support	나이프 지지대	1	
G-34	GP-045112-01		Knife Holder	나이프 홀더	1	
G-35	SC-001636-01		Union Screw(3/32" n=56)	결합나사(3/32" n=56)	2	
G-36	SC-0308-5607		Screw(1/4" n=40)	나이프 고정나사(1/4" n=40)	1	



# Looper Drive Mechanism

## 루퍼구동 관계

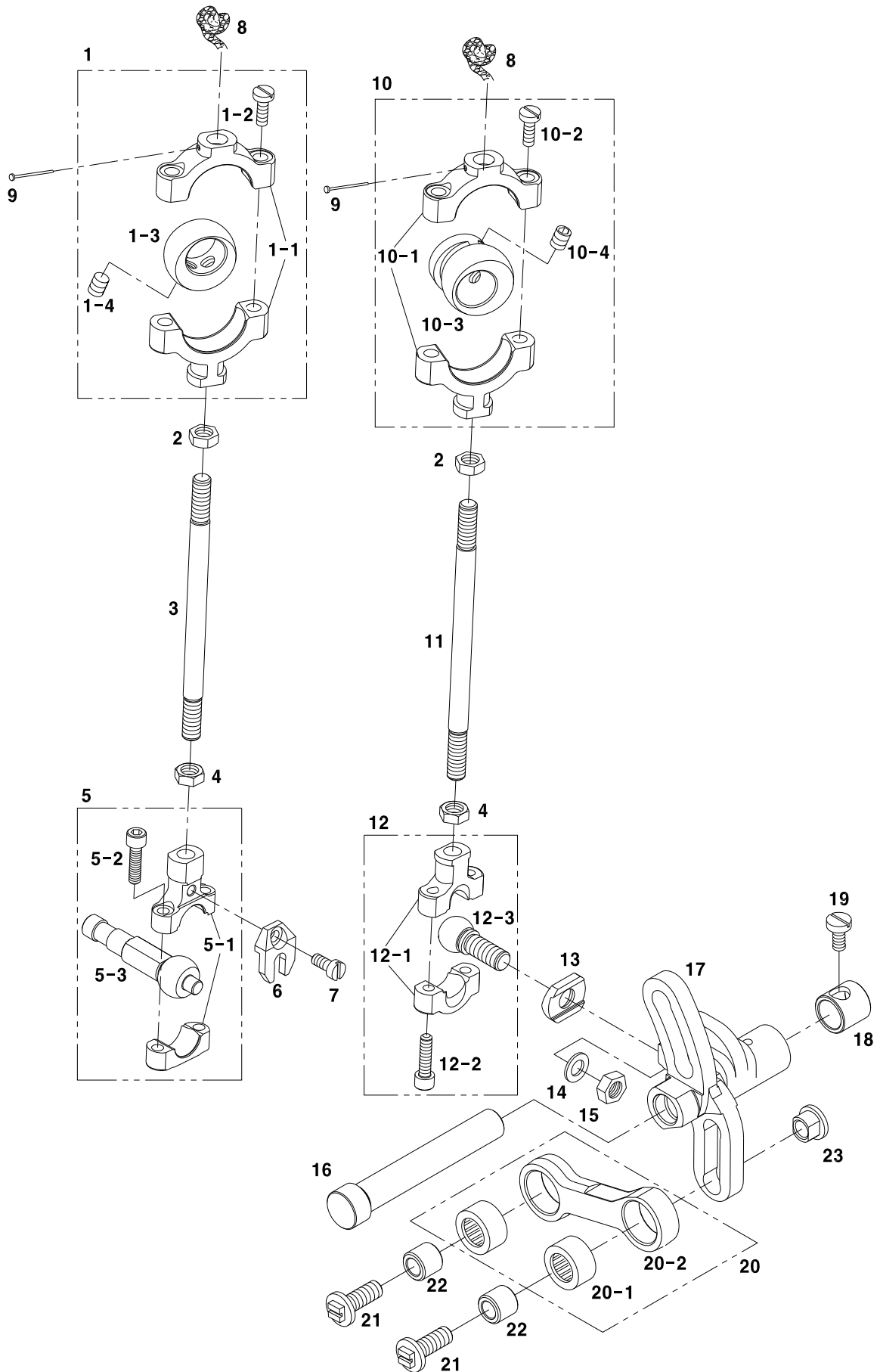




Ref. No.	Parts No.	Note	Name of Parts	품명	Q'ty	Applied Period
H-1	PN-000750-02		Looper Driving Crank Pin	루퍼 구동 크랭크 핀	1	
H-2	SC-001672-00		Fixing Screw(9/64" n=40)	고정나사 B(9/64" n=40)	1	
H-3	PN-000760-00		Spring Pin(Ø1.5)	크랭크 핀 고정 스프링 핀(호칭경Ø1.5)	1	
H-4	AS-016213-00		Looper Lever Driving Rod Assy	루퍼 레버 구동 룯드 (조)	1Set	
H-4-1	GP-045629-00		Looper Lever Driving Rod Ball	루퍼 레버 구동 룯드 볼	1	
H-4-2	SC-001664-00		Screw(M3.5×P0.6)	볼 고정 나사(M3.5×P0.6)	2	
H-4-3	GP-045628-01		Looper Lever Driving Rod	루퍼 레버 구동 룯드	1	
H-5	WS-000133-00		Washer	와셔	1	
H-6	SN-000047-00		Nut(7/32" n=32, 원나사)	고정 너트(7/32" n=32, 원나사)	2	
H-7	04-009C-3710		E-Ring(Ø5)	E-링(Ø5)	2	
H-8	PN-000751-01		Looper Lever Driving Rod Pin	루퍼 레버 구동 룯드 핀	1	
H-9	SC-000984-00		Screw(M3×L4)	핀 고정 나사(M3×L4)	1	
H-10	10S114S-306H		Looper Lever Collar	루퍼 레버 카라	2	
H-11	SC-0164-2700		Screw(M5×L5)	카라 찰나사(M5×L5)	4	
H-12	ST-000076-01		Looper Lever Shaft	루퍼 레버 축	1	
H-13	SC-001671-01		ScrewA(M6×P1)	고정 나사A(M6×P1)	1	
H-14	GP-045439-01		Looper Lever	루퍼 레버	1	
H-15	AS-016214-00		Looper Driving Connecting(U) Assy	루퍼 구동 연결(상) (조)	1Set	
H-15-1	GP-045626-00		Looper Driving Connecting(U)	루퍼 구동 연결(상)	1	
H-15-2	SC-001664-00		Screw(M3.5×P0.6)	고정 나사(M3.5×P0.6)	2	
H-15-3	GP-045115-02		Knife Driving Connecting Ball(R)	나이프 구동 연결 볼(우)	1	
H-16	SN-000296-00		Nut(7/32" n=32)	나이프 구동 연결 볼(우) 너트(7/32" n=32)	1	
H-17	GP-045114-00		Driving Connecting Rod	구동 연결 룯드	1	
H-18	SN-000046-00		Nut(7/32" n=32)	연결(하) 고정 너트(7/32" n=32)	1	
H-19	AS-016215-00		Looper Driving Connecting(L) Assy	루퍼 구동 연결(하) (조)	1Set	
H-19-1	GP-045627-00		Looper Driving Connecting(L)	루퍼 구동 연결(하)	1	
H-19-2	GP-045625-00		Looper Driving Connecting Ball(L)	루퍼 구동 연결 볼(하)	1	
H-19-3	SC-001664-00		Screw(M3.5×P0.6)	고정 나사(M3.5×P0.6)	2	
H-20	SN-000046-00		Nut(7/32" n=32)	연결 볼(하) 고정 너트(7/32" n=32)	1	
H-21	GP-045442-01		Steady Fork	스테티포크	1	
H-22	SC-001666-00		Screw (M3.5XP0.6)	포크 고정 나사	1	
H-23	ST-000074-01		Looper Driving Shaft	루퍼 구동 축	1	
H-24	GP-045436-01		Looper Driving Shaft Sleeve Guide	루퍼 구동 축 슬리브 가이드	1	
H-25	WS-000570-00		Washer(AW4)	이불이 와셔(AW4)	1	
H-26	SC-0215-1230		Screw(9/64" n=40)	가이드 고정 나사(9/64" n=40)	1	
H-27	GP-045435-01		Looper Driveing Shaft Guide	루퍼 구동 축 가이드	1	
H-28	SC-0542-1230		Screw(11/64" n=40)	가이드 고정 나사(11/64" n=40)	1	
H-29	CL-000329-01		Looper Driving Shaft Collar	루퍼 구동 축 카라	1	
H-30	15105SC-4113		Screw(M4×L15)	구동 축 카라 고정나사(M4×L15)	1	
H-31	GP-045440-01		Looper Holder	루퍼 홀더	1	
H-32	SC-001673-00		Screw(11/64" n=40)	루퍼 구동 축 고정 나사(11/64" n=40)	1	
H-33	GP-045445-00		Spacer	스페이셔	1	
H-34	SC-0170-7400		Adjusting Screw(9/64" n=40)	조정 나사(9/64" n=40)	1	
H-35	GP-045707-01		Looper	루퍼	1	
H-36	SC-000239-00		Looper Fixing Screw(9/64" n=40)	루퍼 고정 나사(9/64" n=40)	1	
H-37	GP-045708-00		Needle Guide	바늘 가이드	1	
H-38	SC-001763-00		Screw(29/256" n=48)	바늘가드 고정나사	2	
H-39	SC-001638-01		Looper Setting Screw(3/32" n=56)	루퍼 셋팅 나사(3/32" n=56)	1	
H-40	WS-000560-01		Ball Washer	볼 와셔	1	

# Feed Driving Mechanism

## 피드 구동 관계

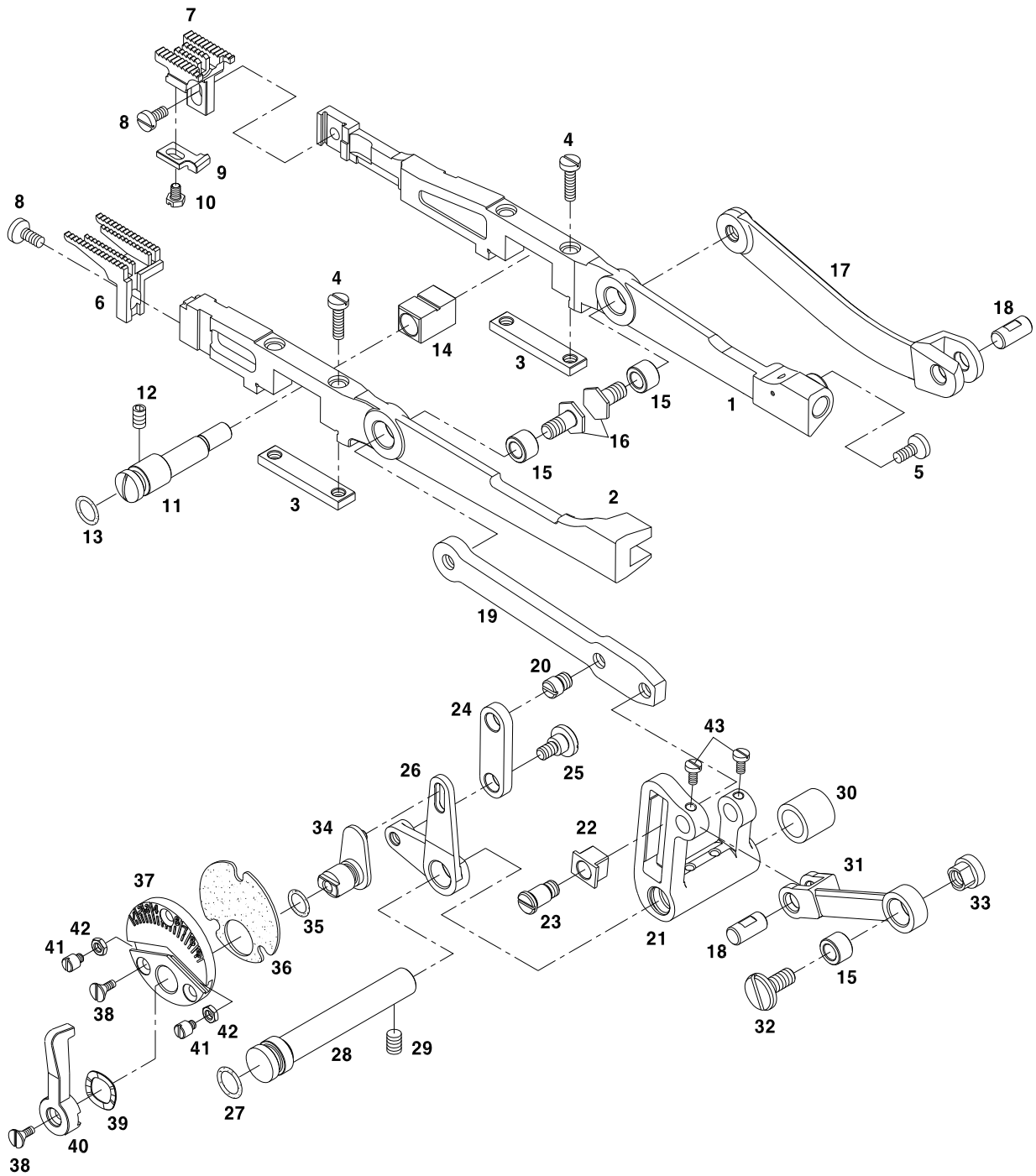




# J

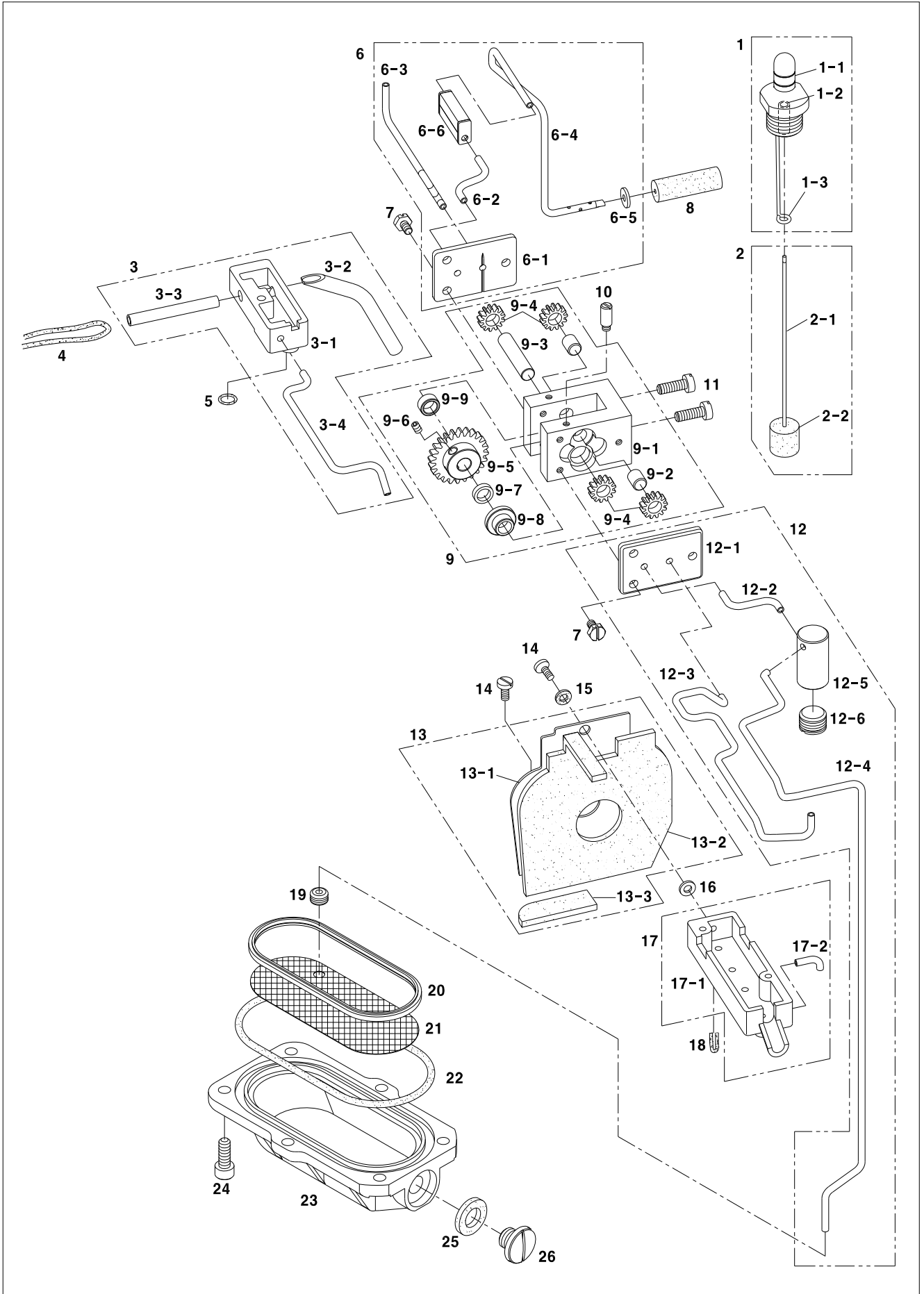
## Feed Adjusting Mechanism

### 피드 조절 관계



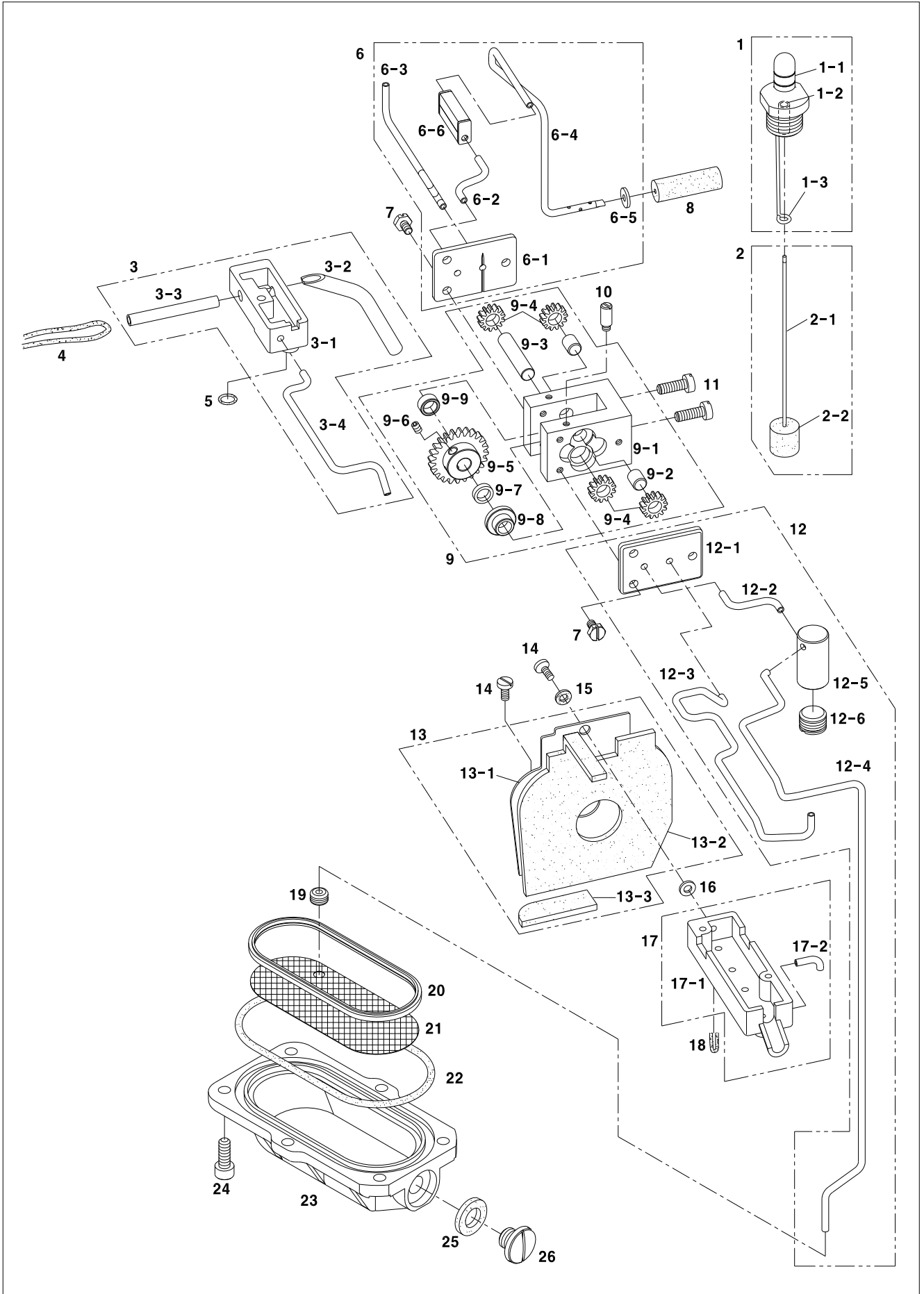








Ref. No.	Parts No.	Note	Name of Parts	품 명	Q'ty	Applied Period
K-1	AS-015644-01		Oil Gauge Ass'y	오일 게이지 (조)	1 Set	
K-1-1	GP-045466-00		Oil Gauge Window	오일 게이지 창	1	
K-1-2	GP-045955-01		Oil Gauge Pipe	오일 게이지 파이프	1	
K-1-3	GP-045956-01		Oil Gauge Wire	오일 게이지 와이어	1	
K-2	AS-015519-00		Oil Indicator Ass'y	유량지시계(조)	1 Set	
K-2-1	GP-045467-00		Oil Indicator	유량지시계	1	
K-2-2	GP-045468-00		Oil Indicating Floater	유량지시 부표	1	
K-3	AS-015521-01		Oil Receiver(Rear) Ass'y	오일받이(후)(조)	1 Set	
K-3-1	GP-045471-01		Oil Receiver(Rear)	오일받이(후)	1	
K-3-2	GP-045472-00		Oil Receiver(Rear) Pipe A	오일받이(후) 파이프A	1	
K-3-3	GP-045473-00		Oil Receiver(Rear) Pipe B	오일받이(후) 파이프B	1	
K-3-4	GP-045474-00		Oil Receiver(Rear) Pipe C	오일받이(후) 파이프C	1	
K-4	-		Oil Wick	유심	1	
K-5	RI-000024-00		O-Ring	O-링	1	
K-6	AS-015557-00		Oil Pump Cover(Rear) Ass'y	오일펌프 커버(후)(조)	1 Set	
K-6-1	GP-045668-00		Oil Pump Cover(Rear)	오일펌프 커버(후)	1	
K-6-2	GP-045669-00		Oil Pump Cover(Rear) Pipe A	오일펌프 커버(후) 파이프A	1	
K-6-3	GP-045670-00		Oil Pump Cover(Rear) Pipe B	오일펌프 커버(후) 파이프B	1	
K-6-4	GP-045671-00		Oil Pump Cover(Rear) Pipe C	오일펌프 커버(후) 파이프C	1	
K-6-5	GP-045672-00		Oil Pump Cover(Rear) Washer	오일펌프 커버(후) 와셔	1	
K-6-6	GP-045673-00		Oil Pump Tank(Rear)	오일펌프 탱크(후)	1	
K-7	SC-000254-00		Screw	오일펌프 커버 고정나사(9/64" n=40)	6	
K-8	GP-045464-00		In-Take Filter	흡입 필터	1	
K-9	AS-016251-00		Oil Pump Ass'y	오일펌프(조)	1 Set	
K-9-1	GP-045465-01		Oil Pump Housing	오일펌프 하우징	1	
K-9-2	ST-000081-01		Oil Pump Gear Shaft(Short)	오일펌프 기어축(단)	2	
K-9-3	ST-000080-00		Oil Pump Gear Shaft(Long)	오일펌프 기어축(장)	1	
K-9-4	GR-000013-01		Oil Pump Gear	오일펌프 기어	4	
K-9-5	GR-000012-00		Oil Pump Driven Gear	오일펌프 종동기어	1	
K-9-6	SC-0542-1230		Screw	오일펌프 종동기어 첩나사(11/64" n=40)	2	
K-9-7	GP-047176-00		Oil Seal	오일씼	1	
K-9-8	BS-000026-00		Oil Pump Bushing(Front)	오일펌프 붓싱(전)	1	
K-9-9	BS-000025-00		Oil Pump Bushing(Rear)	오일펌프 붓싱(후)	1	
K-10	SC-001677-00		Oil Pump Housing Top Screw	오일펌프 하우징 윗나사(9/64" n=40)	2	
K-11	SC-0498-3710		Screw	오일펌프 고정나사(11/64" n=40)	2	
K-12	AS-015558-01		Oil Pump Cover(Front) Ass'y	오일펌프 커버(전)(조)	1 Set	
K-12-1	GP-045674-00		Oil Pump Cover(Front)	오일펌프 커버(전)	1	
K-12-2	GP-045675-00		Oil Pump Cover(Front) Pipe A	오일펌프 커버(전) 파이프A	1	
K-12-3	GP-045676-00		Oil Pump Cover(Front) Pipe B	오일펌프 커버(전) 파이프B	1	
K-12-4	GP-045677-00		Oil Pump Cover(Front) Pipe C	오일펌프 커버(전) 파이프C	1	
K-12-5	GP-045679-01		Oil Pump Tank(Front)	오일펌프 탱크(전)	1	
K-12-6	SC-001634-00		Screw	오일펌프 탱크(전) 마개나사(M12×P1.75)	1	
K-13	AS-015556-00		Thread Take-Up Oil Defender Ass'y	실채기 오일 막이(조)	1 Set	
K-13-1	GP-045665-00		Thread Take-Up Oil Defender	실채기 오일막이	1	
K-13-2	GP-045666-00		Thread Take-Up Oil Defender Felt A	실채기 오일막이 펠트A	1	
K-13-3	GP-045667-00		Thread Take-Up Oil Defender Felt B	실채기 오일막이 펠트B	1	
K-14	SC-000253-00		Screw	고정나사(9/64" n=40)	2	
K-15	WS-000582-00		Seal	패킹	1	
K-16	02-019W-1230		Washer	와셔	1	
K-17	AS-015520-00		Oil Receiver(Front) Ass'y	오일받이(전)(조)	1 Set	
K-17-1	GP-045469-00		Oil Receiver(Front)	오일받이(전)	1	
K-17-2	GP-045470-00		Oil Receiver(Front) Pipe	오일받이(전) 파이프	1	
K-18	-		Oil Wick	유심	3	
K-19	GP-045462-01		Oil Filter Screen Rubber Bushing	오일 거름망 고무 붓싱	1	
K-20	GP-045463-00		Oil Filter Screen Rubber Seal	오일 거름망 고무 씼	1	
K-21	GP-045461-00		Oil Filter Screen	오일 거름망	1	
K-22	RI-000170-00		O-Ring	O-링(G80)	1	

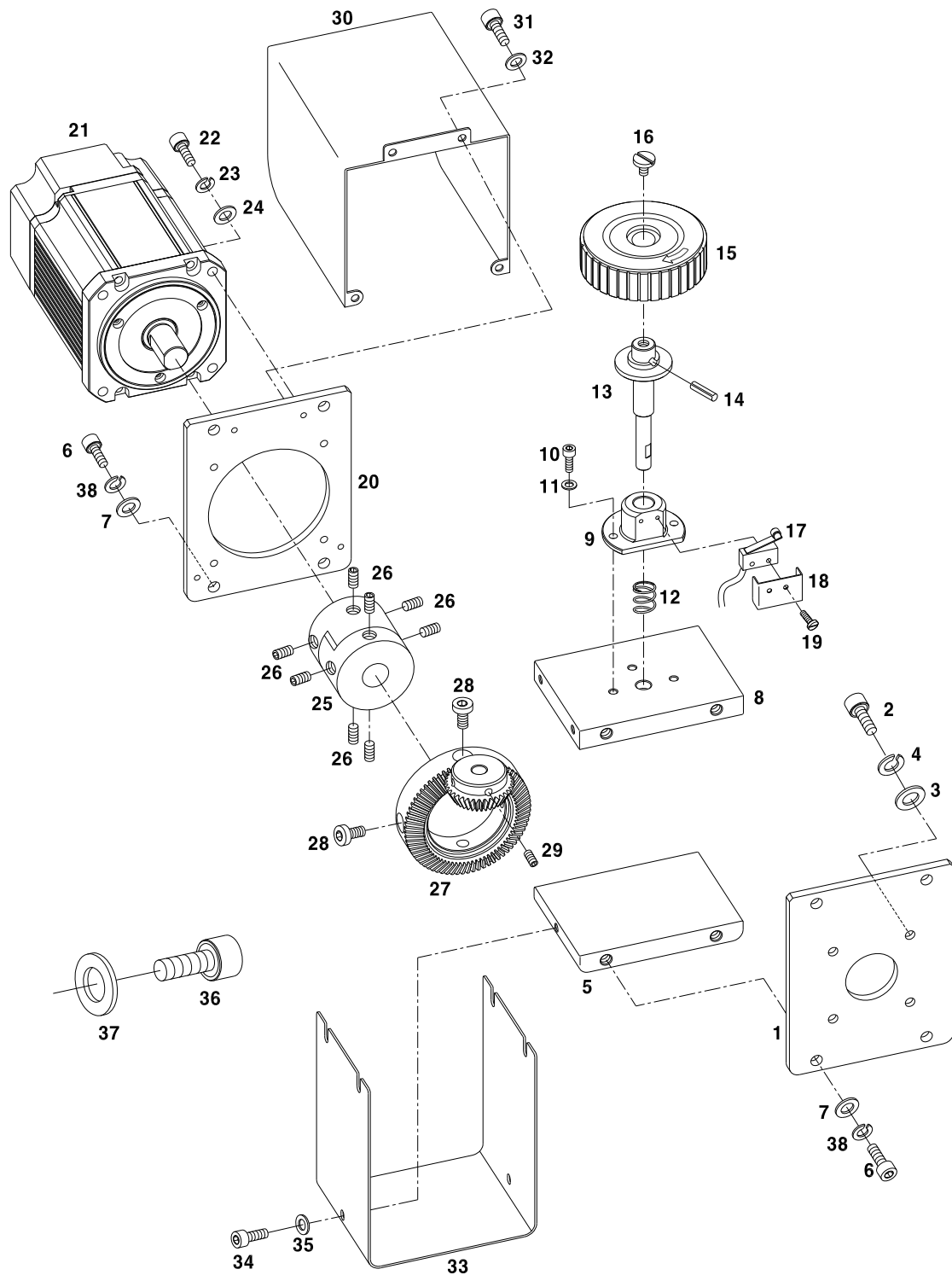




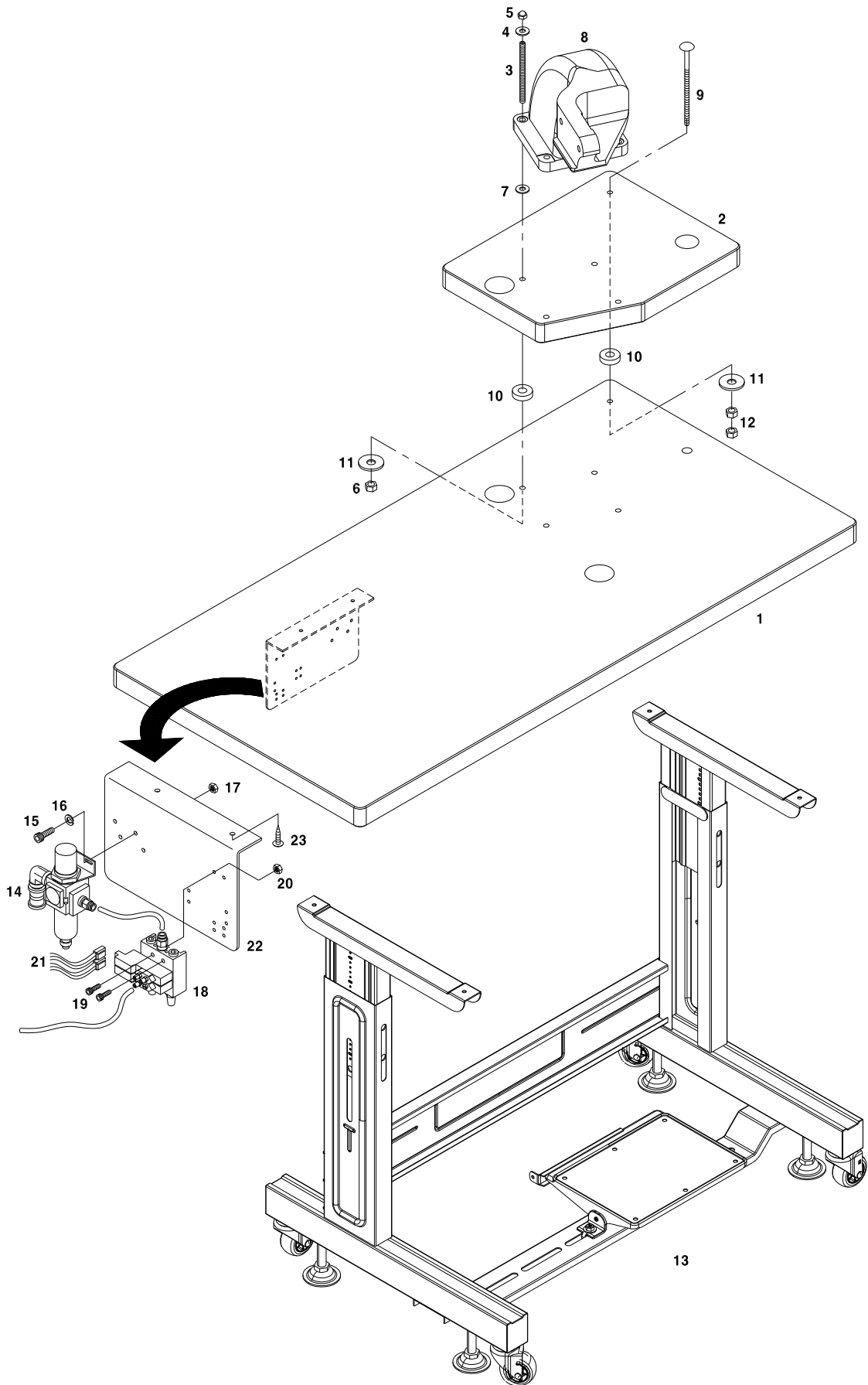


# Hand Pulley Mechanism

## 핸드 풀리 관계







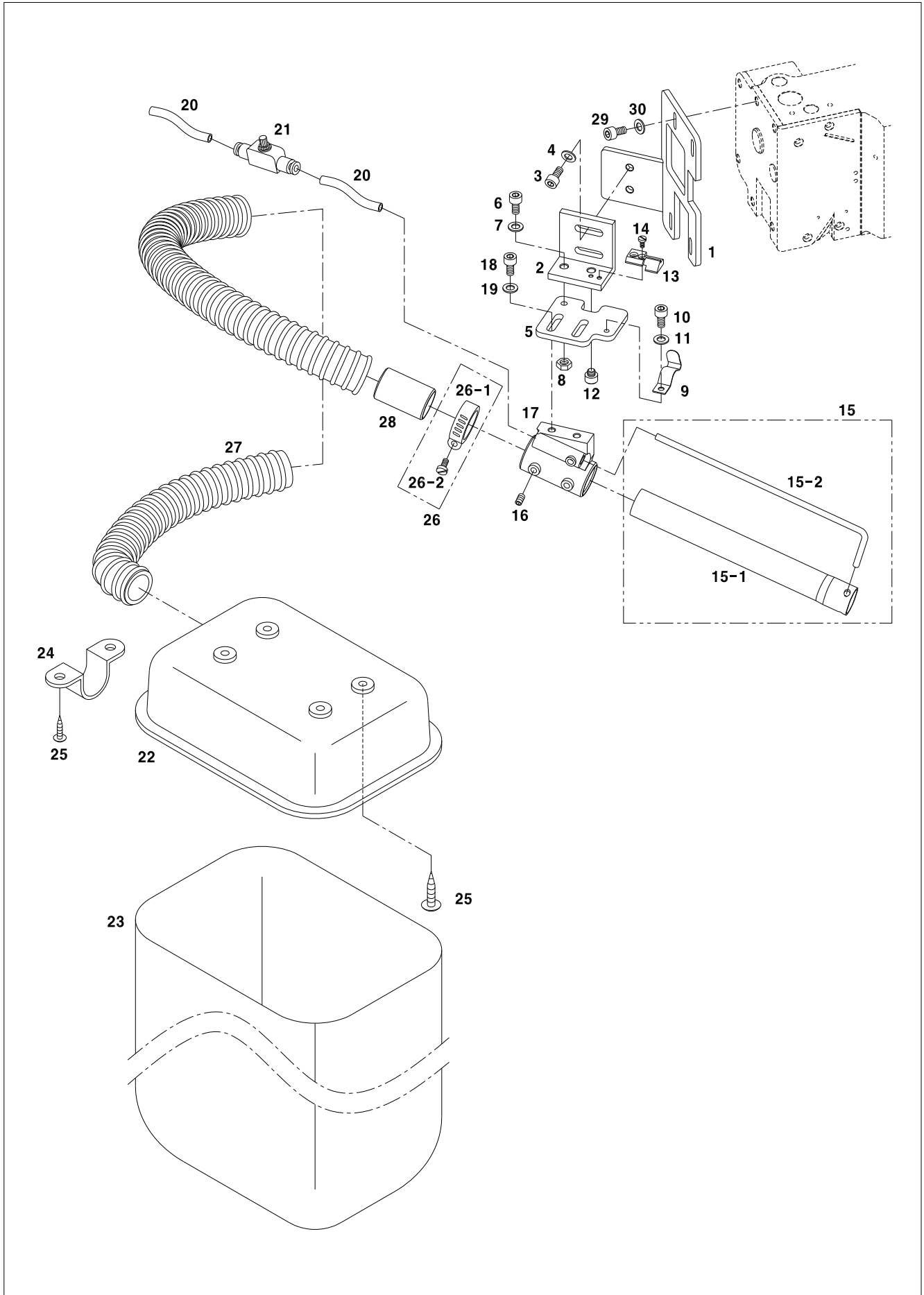




# N

## Suction Mechanism

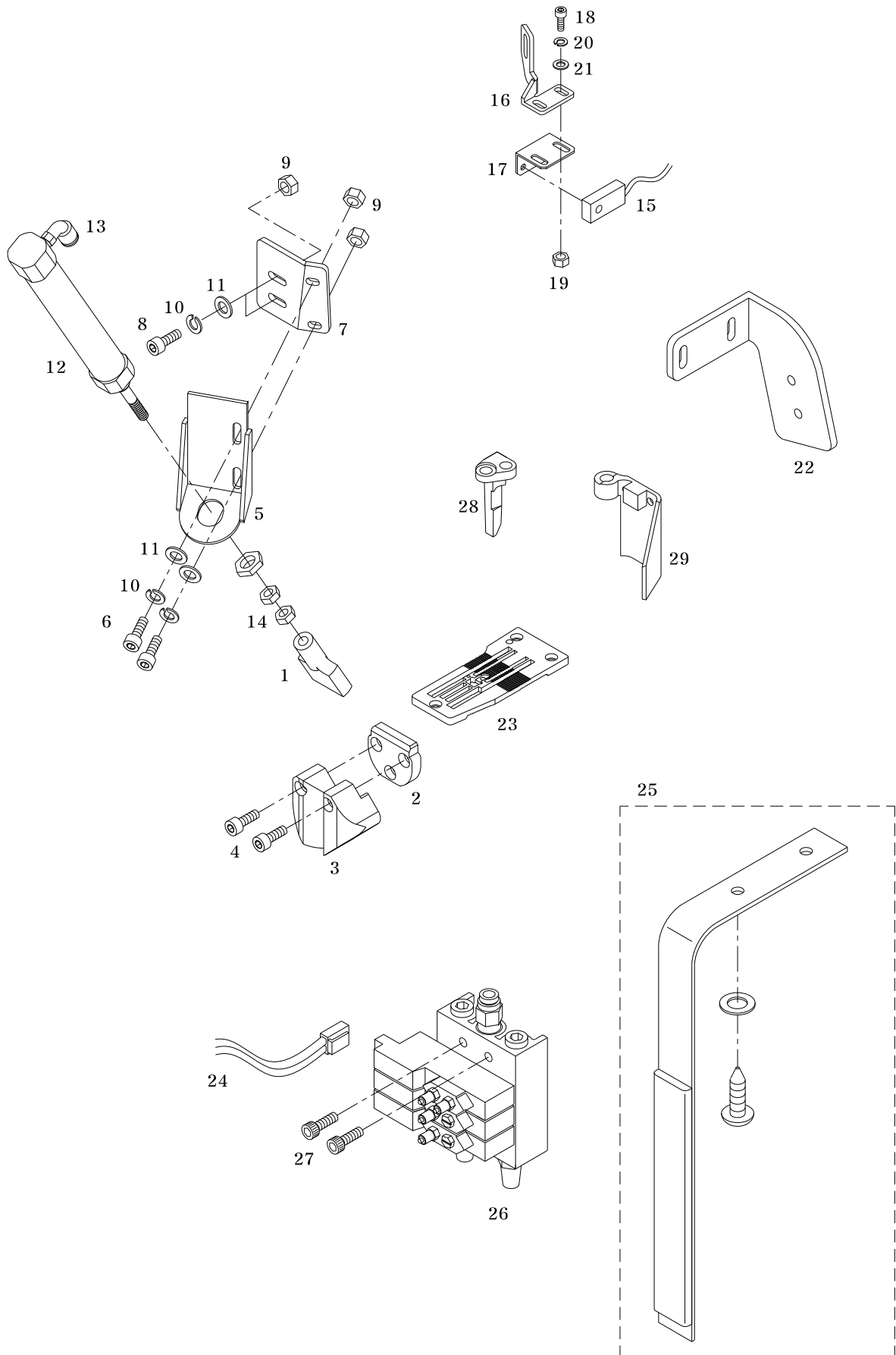
### 흡입 관계



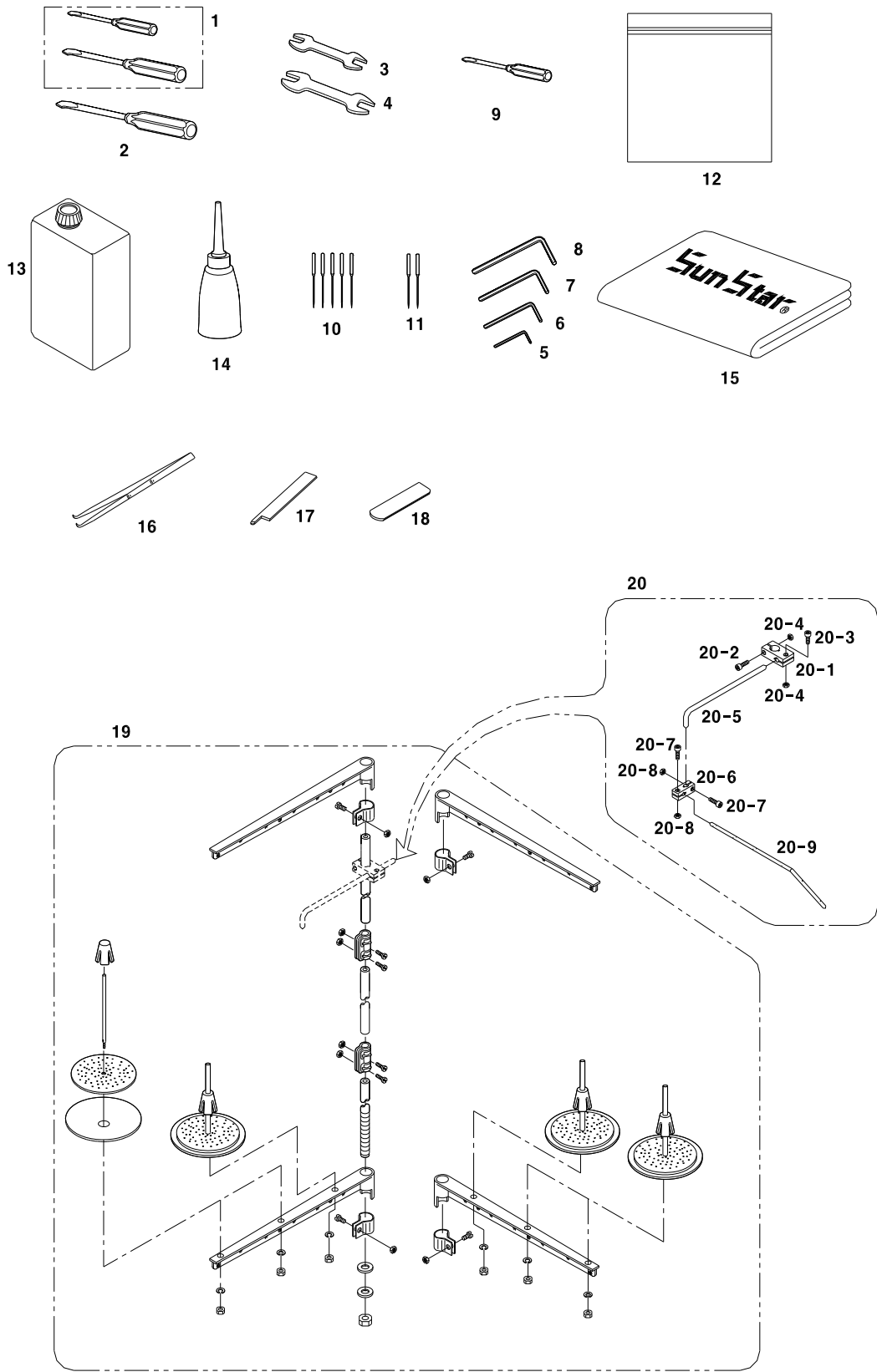


## Cutting Mechanism (Option)

컷팅 관계 (선택사양)









# Index

Parts No.	Name of Parts	Page	Ref.No.	Parts No.	Name of Parts	Page	Ref.No.	Parts No.	Name of Parts	Page	Ref.No.
01-002M-AU12	Screw(M4XP0.7)	41	M-19	14064SN-9311	Nut (M5)	45	O-14	AS-015556-00	Oil Defender Ass'y	35	K-13
01-004W-7600	Washer	39	L-37	15017SC-4113	Screw(M8xP1.25)	25	F-44	AS-015557-00	Oil Pump Cover(Rear) Ass'y	35	K-6
01006SC-4113	Screw(M10xL45)	39	L-36	15-053S-5607	Screw (11/64" n=40)	33	J-4	AS-015558-01	Oil Pump Cover(Front) Ass'y	35	K-12
01-007R-8130	Rubber Cap(S)	7	A-50	15077SW-2111	Washer	41	M-4	AS-015559-01	Thread Guide Support Ass'y	13	C-1
01-008S-2070	Head Key Screw	7	A-39	15084SC-8119	Screw(M4xL6)	39	L-31	AS-015644-01	Oil Gauge Ass'y	35	K-1
01-035P-1370	Serial Number Plate	7	A-23	15084SC-8119	Screw(M4xL6)	39	L-34	AS-015963-00	Thread Release Support Ass'y	13	C-9
01-035P-7400	Rivet	7	A-24	15095SW-3115	Washer	25	F-41	AS-015987-00	Suction Pipe Unit	43	N-15
01-038W-1230	Washer	25	F-40	15105SC-4113	Screw(M4xL15)	29	H-30	AS-016133-00	Presser Foot Ass'y	23	F-36
01-054R-300G	Rubber Cap(L)	7	A-49	15105SC-7113	Screw (M4xL15)	45	O-8	AS-016197-00	Silicone Oil Tank Ass'y	13	C-24
01S034S-306H	Nut	7	A-47	16014SW-2516	Spring Washer(Ø6)	39	L-38	AS-016209-00	Hook Driving Rod(L) Ass'y	27	G-1
02015SC-4113	Screw (M4xL10)	45	O-6	18014SW-3115	Spring Washer (Ø4)	45	O-10	AS-016210-00	Connecting(R) Ass'y	27	G-12
02015SC-4113	Screw(M4xL10)	39	L-10	18014SW-3115	Washer	39	L-11	AS-016211-00	Connecting(L) Ass'y	27	G-16
02-019W-1230	Washer	13	C-5	18014SW-3115	Washer	39	L-32	AS-016213-00	Looper Lever Driving Rod Assy	29	H-4
02-019W-1230	Washer	35	K-16	18014SW-3115	Washer	39	L-35	AS-016214-00	Connecting(U) Assy	29	H-15
02-019W-1230	Washer	43	N-30	18014SW-3115	Washer (Φ4)	43	N-11	AS-016215-00	Connecting(L) Assy	29	H-19
02-020S-120D	Screw(M5xL25)	39	L-2	18015SW-3111	Washer (Ø4)	45	O-11	AS-016216-00	Feed Lift Connection (U) Assy	31	I-1
02-020S-120D	Screw(M5xL25)	39	L-22	18047SC-7113	Screw	23	F-17	AS-016217-00	Feed Lift Connection (L) Assy	31	I-5
02030SW-1211	Washer	41	M-16	19011SN-9311	Nut(M8XP1.25)	25	F-46	AS-016218-00	Connection (U) Assy	31	I-10
02031SC-4113	Screw	23	F-35	19011SN-9311	Nut(M8XP1.25)	41	M-6	AS-016219-00	Connection (L) Assy	31	I-12
03071SC-7113	Screw (M3xL10)	45	O-18	19011SN-9311	Nut(M8XP1.25)	41	M-12	AS-016220-00	Connecting Rod Assy	31	I-20
04-009C-3710	E-Ring(Ø5)	29	H-7	23008ET-T121	Spanner(5.5x7)	47	P-3	AS-016251-00	Oil Pump Ass'y	35	K-9
05016SN-1211	Nut(M4XP0.7)	41	M-20	25S008S-306H	Spring Pin	39	L-14	AS-016272-00	Thread Stand (Ass'y)	47	P-19
05452CM-A001	Thread Guide Bushing	13	C-1-2	25S012S-306H	Screw(15/64" n=28)	39	L-16	AS-016273-00	Thread Guide Sub Bar(Ass'y)	47	P-20
05452CM-A001	Thread Guide Bushing	13	C-3-1	26010ET-A001	Spanner(8xp)	47	P-4	AS-016385-00	Tension Adjusting Ass'y	15	C-62
05A052S-811H	Suction Air Hose	43	N-20	40-007W-1600	Head Screw Washer	7	A-35	AS-016386-00	Tension Adjusting Ass'y	15	C-63
06-004P-2350	Standard Pin	11	B-4	40-704C-1230	Tension Adjusting Nut	13	C-14	AS-016387-00	Tension Adjusting Ass'y	15	C-64
06011SW-2111	Washer(Ø3)	45	O-21	44-0000-1230	Oil Wick	17	D-17	BR-000342-00	Upper Shaft Bearing	17	D-3
06-042R-1230	O-Ring(P8)	33	J-13	49-001A-5030	Fitting	25	F-43	BR-000354-00	Needle Bearing (KT202410)	19	E-19
06-051W-7400	Washer	25	F-49	49-007A-106L	Fitting	41	M-14-4	BR-000355-00	Needle Bearing	19	E-25
06-051W-7400	Washer	39	L-7	49A004S-811H	Coupling	41	M-14-5	BR-000356-00	Needle Bearing (BA 65Z)	31	I-20-1
07-011W-1230	Spring Washer	39	L-4	49A009S-811H	Nut(M5XP0.8)	41	M-17	BS-000003-01	Upper Knife Bushing	27	G-18
07-011W-1230	Spring Washer	39	L-24	49A015S-811H	Hose Nipple	41	M-18-4	BS-000004-00	Presser Bar Bushing	17	D-19
07016SC-7113	Screw(M4xP0.7, L=12)	47	P-20-3	49A019S-811H	Manifold Block	41	M-18-2	BS-000005-01	Needle Bar Bushing (Lower)	17	D-22
07016SC-7113	Screw(M4xP0.7, L=12)	47	P-20-7	49A020S-811H	Silencer	41	M-18-7	BS-000006-01	Needle Bar Bushing (Upper)	17	D-21
08037SC-120D	Screw(M6xL8)	39	L-26	51A056S-81H2	Washer	19	E-11	BS-000007-00	Bushing	17	D-27
08062SC-7113	Screw(M5XP0.8)	41	M-15	90S014S-306H	Washer	41	M-11	BS-000008-01	Bushing(Front)	17	D-24
08076SC-4113	Screw (M5XP0.8)	43	N-6	91-001C-1230	Bag for Accessories	47	P-12	BS-000009-01	Bushing(Rear)	17	D-25
09-008S-8270	Screw (1/8" n=44)	15	C-58	91-001C-2700	Wrench(2mm)	47	P-5	BS-000010-01	Upper Shaft Bearing Bushing	17	D-1
09-025W-8270	Washer	25	F-45	91-001C-3800	Wrench(4mm)	47	P-8	BS-000011-01	Upper Shaft Bushing	17	D-8
09-041S-3701	Nut (M4)	45	O-9	91-001M-120D	Warning Sticker	9	A-61	BS-000012-01	Bushing	17	D-13
10-002A-300G	Collar	19	E-51	91-002S-3400	Screw	41	M-23	BS-000013-01	Main Shaft Bushing	17	D-9
10-020S-300G	Screw (M5XP0.8)	43	N-3	91-002S-3400	Wood Screw	43	N-25	BS-000014-00	Bushing	17	D-14
10-020S-300G	Screw (M5XP0.8)	43	N-18	91-003C-2700	Wrench(3mm)	47	P-7	BS-000015-01	Knife Driving Lever Bushing(F)	17	D-11
10-020W-2700	Washer	39	L-3	91-004C-2700	Wrench(2.5mm)	47	P-6	BS-000016-01	Knife Driving Lever Bushing(R)	17	D-12
10-020W-2700	Washer	39	L-23	91-011C-1230	Oiller	47	P-14	BS-000017-01	Crank Shaft Bushing	17	D-7
10-020W-2700	Washer (Φ5)	43	N-4	91-020A-300G	Thread Tweexers	47	P-16	BS-000021-00	Bushing	33	J-15
10-020W-2700	Washer (Φ5)	43	N-7	91-101C-120H	Head Cover	47	P-15	BS-000022-01	Thread Release Pin Bushing	13	C-9-2
10-020W-2700	Washer (Φ5)	43	N-19	91-102C-12300	Screw Driver (L)	47	P-1	BS-000023-00	Bushing Rod	31	I-22
10-022S-2077	Stud Screw(3/16" N=32)	25	F-48	91-103C-12300	Screw Driver (M),(S)	47	P-2	BS-000024-00	Bushing	31	I-18
10-026S-9677	Screw	37	K-24	AS-003072-00	Hose Clamp Ass'y	43	N-26	BS-000024-00	Bushing	33	J-30
10-033C-7507	Nut (M5XP0.8)	43	N-8	AS-007411-00	Filter Regulator Ass'y	41	M-14	BS-000025-00	Oil Pump Bushing(Rear)	35	K-9-9
10-058S-2077	Screw (9/64" n=40)	13	C-6	AS-007412-01	Solenoid Valve Ass'y	41	M-18	BS-000026-00	Oil Pump Bushing(Front)	35	K-9-8
10-110S-300G	Presser Foot Screw	25	F-37	AS-015340-00	Solenoid Valve Ass'y	45	O-26	CA-003186-00	Safety Switch Cable Ass'y	39	L-17
10-110S-300G	Screw(11/64" n=40)	13	C-22	AS-015464-01	Thread Take-Up Ass'y	19	E-4	CA-003187-00	Cable	41	M-21
10S060S-306H	Top Cover(Middle) Screw	7	A-11	AS-015465-01	Thread Take-Up Ass'y	19	E-3	CA-004806-00	Cable	45	O-24
10S114S-306H	Looper Lever Collar	29	H-10	AS-015513-01	Bevel Gear Ass'y	39	L-27	CA-004808-00	Sensor	45	O-15
11-016W-2700	Spring Washer (Ø3)	45	O-20	AS-015515-00	Thread Take-Up Ass'y	13	C-27	CL-000324-01	Take-up Collar	19	E-4-2
11-017C-7507	Top Cover(Middle) Spring Nut	7	A-15	AS-015516-00	Thread Guide Pipe(Ass'y)	13	C-3	CL-000325-01	Looper Thread Take-up Collar	19	E-3-3
11-024S-2077	Screw (1/8" n=40)	19	E-6	AS-015517-02	Holder Ass'y	15	C-44	CL-000326-00	Main Shaft Collar	19	E-7
12-103S-SC51	Screw	45	O-4	AS-015519-00	Oil Indicator Ass'y	35	K-2	CL-000329-01	Looper Driving Shaft Collar	29	H-29
14002SC-4113	Screw(M6xL15)	39	L-6	AS-015520-00	Oil Receiver(Front) Ass'y	35	K-17	EA-000090-00	Switch For Knee Lifting Ass'y	45	O-25
14002SC-4113	Screw(M6xL15)	39	L-28	AS-015521-01	Oil Receiver(Rear) Ass'y	35	K-3	GP-000908-01	Tension Disc	13	C-19



# Index

Parts No.	Name of Parts	Page	Ref.No.	Parts No.	Name of Parts	Page	Ref.No.	Parts No.	Name of Parts	Page	Ref.No.
GP-001317-00	Oil Window	7	A-8	GP-045075-01	Head Cover(Front)	7	A-57	GP-045368-01	Lower Knife Clamp	23	F-36-16
GP-001514-00	Thread Guide Sub Bar	47	P-20-5	GP-045077-00	Top Cover(Front) Gasket	7	A-20	GP-045369-00	Lower Knife	23	F-36-15
GP-001515-00	Thread Guide Bar	47	P-20-9	GP-045079-01	Top Cover(Rear) Gasket	7	A-4	GP-045369-00	Lower Knife	47	P-18
GP-001516-00	Screw(M4xP0.7, L=12)	47	P-20-6	GP-045081-01	Head Cover Gasket	7	A-56	GP-045370-00	Thread Hook, Carrier Crank	23	F-36-2
GP-001517-00	Holder	47	P-20-1	GP-045082-01	Arm End Cover Gasket	7	A-25	GP-045373-00	Spring Plate A (Left)	23	F-36-20
GP-001595-00	Pipe Holder	13	C-4	GP-045083-00	Gasket	7	A-28	GP-045374-01	Double Presser Foot	23	F-36-19
GP-001595-00	Pipe Holder	13	C-37	GP-045084-01	Looper Lever Shaft Cover	7	A-29	GP-045375-00	Spring Plate A (Right)	23	F-36-21
GP-001623-00	Solenoid Valve	41	M-18-1	GP-045085-01	Arm End Cover	7	A-26	GP-045376-00	Spring Plate Holder	25	F-36-23
GP-001624-00	Screw Driver	47	P-9	GP-045086-01	Top Cover(Front)	7	A-18	GP-045377-01	Chip Guard	25	F-36-24
GP-002323-00	Filter Regulator	41	M-14-1	GP-045087-01	Top Cover(Rear)	7	A-3	GP-045378-00	Presser Foot Left Plate	23	F-36-13
GP-002421-00	Bottle of Oil	47	P-13	GP-045088-01	Needle Bar Bushing Lid	17	D-20	GP-045379-00	Presser Foot Right Plate	23	F-36-12
GP-009821-00	Warning Sticker A	9	A-60	GP-045089-00	Lifter Lever Plate	23	F-18	GP-045380-02	Bucket Base	39	L-5
GP-010268-00	Hose Band	43	N-24	GP-045090-00	Presser Bar Lifter Lever(Large)	23	F-20	GP-045381-01	Base Cover	39	L-33
GP-011077-00	Hose Clamp	43	N-26-1	GP-045091-00	Presser Bar Lifter Lever(Small)	23	F-30	GP-045382-01	Hand Pulley Bracket	39	L-8
GP-016315-01	Manifold Bracket	41	M-22	GP-045095-00	Presser Bar Lifter Lever	23	F-32	GP-045383-01	Cloth Guide Plate	25	F-36-27
GP-019793-00	Slide Valve	41	M-14-2	GP-045097-00	Presser Foot Guide (Left)	23	F-16	GP-045384-01	Thread Hook Driving Lever	23	F-36-9
GP-022433-00	Fitting	45	O-13	GP-045102-00	Felt Cap	17	D-16	GP-045385-01	Thread Carrier Driving Lever	23	F-36-6
GP-030140-00	Bushing Oil Felt	27	G-21	GP-045103-02	Bushing Housing Gasket	17	D-5	GP-045386-00	Looper Thread Take-Up	13	C-27-1
GP-032277-00	Speed Controller	43	N-21	GP-045104-02	Bushing Housing	17	D-4	GP-045387-01	Guide Support Plate	13	C-34
GP-032376-00	Safety Spring	39	L-12	GP-045105-01	Knife Driving Connecting (L)	31	I-12-1	GP-045388-00	Looper Thread Guide(U)	13	C-40
GP-032378-00	Hand Pulley Shaft	39	L-13	GP-045105-01	Knife Driving Connecting(L)	27	G-16-1	GP-045389-01	Holder Bucket	15	C-41
GP-032452-00	Arm Fixing Bracket	39	L-1	GP-045106-00	Rod Ball(L)	27	G-16-2	GP-045390-01	Support Bucket	13	C-10
GP-032453-00	Motor Bucket	39	L-20	GP-045108-01	Thread Take-Up Bracket	27	G-9	GP-045391-00	Support Bar	13	C-8
GP-032456-00	Coupling A Type	39	L-25	GP-045109-01	Upper Knife	27	G-31	GP-045392-00	Driving Lever Link	23	F-36-3
GP-032461-00	Hand Pulley Shaft Base	39	L-9	GP-045109-01	Upper Knife	47	P-17	GP-045393-02	Disk Adjusting Plate	13	C-20
GP-032462-00	Safety Switch Cover	39	L-18	GP-045110-01	Knife Support	27	G-33	GP-045394-01	NEEDLE GUARD (Rear)	33	J-9
GP-032466-00	Motor Cover	39	L-30	GP-045111-01	Knife Holder Guide	27	G-26	GP-045395-01	Main Feed Dog	33	J-7
GP-032471-00	Cylinder Knuckle	25	F-47	GP-045112-01	Knife Holder	27	G-34	GP-045396-01	Main Feed Bar	33	J-1
GP-032772-00	Air Cylinder	25	F-42	GP-045113-01	Knife Driving Lever	27	G-10	GP-045397-01	Main Feed Driving Link	33	J-17
GP-032847-00	Bracket for Dust Bag	43	N-22	GP-045114-00	Driving Connecting Rod	29	H-17	GP-045398-01	Differential Feed Bar	33	J-2
GP-032848-00	Dust Bag	43	N-23	GP-045114-00	Connecting Rod	27	G-14	GP-045399-00	Driving Link	33	J-19
GP-033416-01	Hand Pulley	39	L-15	GP-045115-02	Connecting Ball(R)	27	G-12-2	GP-045400-00	Bed Gasket	11	B-2
GP-033563-00	Nipple	41	M-14-3	GP-045115-02	Connecting Ball(R)	29	H-15-3	GP-045401-00	Operating Lever	33	J-40
GP-033564-00	Plug	41	M-18-5	GP-045116-01	Connecting(R)	27	G-12-1	GP-045402-00	Thread Pie(U)	13	C-39
GP-033566-00	Hose Nipple	41	M-18-3	GP-045118-01	Hook Driving Rod(L)	27	G-1-1	GP-045404-00	Thread Take-Up Holder	13	C-25
GP-033568-00	Fitting	41	M-18-6	GP-045119-02	Hook Driving Sleeve	27	G-20	GP-045406-01	Bed Oil Gauge	11	B-9
GP-033572-00	Sticker for Gauge M5	11	B-48	GP-045120-01	Knife Holder Shaft Support	27	G-24	GP-045407-01	Adjusting Dial	33	J-37
GP-033573-00	Sticker for Gauge M6	11	B-47	GP-045121-00	Oil Felt	17	D-15	GP-045408-01	Adjusting Lever	33	J-26
GP-035651-00	Needle (UY118GCS #10)	19	E-43	GP-045128-00	Presser Foot Guide (Right)	23	F-14	GP-045409-00	Adjusting Lever (M)	33	J-34
GP-035651-00	Needle(UY118GCS #10)	47	P-10	GP-045129-00	Connecting Bracket	23	F-4	GP-045410-00	Bed Cover (Front)	11	B-7
GP-035745-00	Needle (UY 36211 FLG-1 #10)	19	E-44	GP-045130-00	Presser Bar Guide	23	F-9	GP-045411-00	Adjusting Link	33	J-24
GP-035745-00	Needle(UY36211 FLG-1 #10)	47	P-11	GP-045131-01	Connecting Bracket Cushion	23	F-8	GP-045412-01	Differential Feed Dog	33	J-6
GP-035759-00	Table Stand Ass'y	41	M-13	GP-045132-00	Connecting Lever	23	F-33	GP-045413-01	Slide Block	33	J-22
GP-043872-00	Wire Oil Wick	17	D-10	GP-045133-00	Lifter Lever Link(Large)	23	F-27	GP-045414-01	Bed Cover (Left)	11	B-13
GP-044166-00	Thread Cutting Block	45	O-1	GP-045134-00	Plunger	23	F-26	GP-045415-00	Bed Cover (Left) Gasket	11	B-12
GP-044167-00	Thread Cutting Base	45	O-2	GP-045135-01	Retaining Plate	19	E-21	GP-045416-01	Feed Rocker Link	33	J-31
GP-044174-00	Bracket "B"	45	O-7	GP-045136-01	Connecting Rod	19	E-23	GP-045417-00	Feed Rocker	33	J-21
GP-044175-00	Bracket "A"	45	O-5	GP-045137-01	Connecting Link	19	E-33	GP-045418-00	Gasket	11	B-31
GP-044384-00	Thread Guide	45	O-3	GP-045138-02	Driving Rod (Right)	19	E-20	GP-045419-01	Feed Bar Slide Block	33	J-14
GP-044526-00	Suction Bracket	45	O-22	GP-045139-01	Needle Bar Holder	19	E-37	GP-045420-01	Feed Bar Plate	33	J-3
GP-044527-00	Needle Plate	45	O-23	GP-045140-01	Take-up Plate	19	E-4-1	GP-045421-00	Feed Driving Shaft Cover	11	B-32
GP-044528-00	Sensor Holder	45	O-17	GP-045141-01	Thread Take-up Plate	19	E-3-1	GP-045422-01	Supporter	11	B-19
GP-044529-00	Sensor Bracket	45	O-16	GP-045142-01	Thread Take-up Spacer	19	E-3-2	GP-045423-02	Thread Release Support	13	C-9-1
GP-044579-00	Air Cylinder	45	O-12	GP-045143-01	Stitch Plate Tongue(5.2mm)	19	E-48	GP-045424-00	Bed Cover Upper	11	B-37
GP-044648-00	Frame Chip Guard	45	O-29	GP-045144-01	Main Shaft Coupling_A	19	E-9	GP-045425-00	Thread Guide Plate Support	13	C-7
GP-044649-00	Presser Foot Guide	45	O-28	GP-045145-01	Main Shaft Coupling_B	19	E-10	GP-045426-01	Connecting Rod	31	I-20-2
GP-044966-02	Arm	7	A-1	GP-045146-01	Needle Holder	19	E-41	GP-045427-00	Spring Holder	15	C-57
GP-044967-03	Bed	11	B-1	GP-045147-01	Needle Plate (5.2mm)	19	E-46	GP-045428-01	Lever	31	I-17
GP-044968-01	Head	7	A-2	GP-045138-01	Arm Supporting Block	41	M-8	GP-045429-00	Needle Thread Guide	15	C-52
GP-045071-00	Top Cover(Middle)	7	A-10	GP-045365-01	Stopper Plunger	23	F-24	GP-045430-01	Needle Thread Guide	15	C-46
GP-045072-00	Oil Guard Felt	7	A-43	GP-045366-00	Lifter Lever Link(Small)	23	F-29	GP-045432-00	Pin Holder Cover	15	C-44-1
GP-045074-01	Head Cover(Left)	7	A-48	GP-045367-02	Presser Foot	23	F-36-1	GP-045433-00	Pin Holder	15	C-44-2

# Index

Parts No.	Name of Parts	Page	Ref.No.	Parts No.	Name of Parts	Page	Ref.No.	Parts No.	Name of Parts	Page	Ref.No.
GP-045435-01	Looper Driving Shaft Guide	29	H-27	GP-045672-00	Oil Pump Cover(Rear) Washer	35	K-6-5	GP-047624-00	Insert Hose	43	N-28
GP-045436-01	Guide	29	H-24	GP-045673-00	Oil Pump Tank(Rear)	35	K-6-6	GR-000008-00	Pump Driving Gear	19	E-15
GP-045439-01	Looper Lever	29	H-14	GP-045674-00	Oil Pump Cover(Front)	35	K-12-1	GR-000012-00	Oil Pump Driven Gear	35	K-9-5
GP-045440-01	Looper Holder	29	H-31	GP-045675-00	Oil Pump Cover(Front) Pipe A	35	K-12-2	GR-000013-01	Oil Pump Gear	35	K-9-4
GP-045441-01	NeedleBar Lever	19	E-29	GP-045676-00	Oil Pump Cover(Front) Pipe B	35	K-12-3	NB-000001-01	NeedleBar	19	E-40
GP-045442-00	Steady Fork	31	I-6	GP-045677-00	Oil Pump Cover(Front) Pipe C	35	K-12-4	PN-000778-00	Spring Pin (Ø1.5 I=6)	21	E-53
GP-045442-01	Steady Fork	29	H-21	GP-045678-01	Gasket	33	J-36	PN-000736-00	Stop Plunger Pin	23	F-22
GP-045443-00	Eyelet(R)	13	C-32	GP-045679-01	Oil Pump Tank(Front)	35	K-12-5	PN-000737-00	Connecting Link	19	E-34
GP-045444-00	Eyelet(F)	13	C-31	GP-045680-00	Feed Lift Eccentric Ball	31	I-1-3	PN-000738-00	Connecting Rod	19	E-26
GP-045445-00	Spacer	29	H-33	GP-045681-00	Connecting Rod	31	I-3	PN-000741-01	Thread Hook Driving Lever Pin	23	F-36-4
GP-045447-01	Oil guide Wire	7	A-51	GP-045682-00	Connecting Ball	31	I-12-3	PN-000742-00	Pin for Feed Rocker Link	33	J-18
GP-045448-00	Thread Take-Up Cover	9	A-58	GP-045683-00	Feed Drive Eccentric Ball	31	I-10-3	PN-000743-01	Pin for Feed Bar Eccentric	33	J-11
GP-045449-00	Oil Pan	37	K-23	GP-045684-00	Connecting Rod	31	I-11	PN-000744-00	Eccentric Pin	11	B-3
GP-045460-00	Head Oil Defender	7	A-37	GP-045685-01	Feed Lift Connection Ball	31	I-5-3	PN-000745-01	Thread Release Pin	13	C-23
GP-045461-00	Oil Filter Screen	35	K-21	GP-045686-01	Feed Lift Connection (U)	31	I-1-1	PN-000746-00	Looper Cover Pin	11	B-24
GP-045462-01	Bushing	35	K-19	GP-045686-01	Feed Lift Connection (U)	31	I-10-1	PN-000747-01	Stitch Plate Guide Pin	11	B-18
GP-045463-00	Seal	35	K-20	GP-045688-00	Bracket	15	C-53	PN-000748-01	Needle Thread Pin	15	C-42
GP-045464-00	In-Take Filter	35	K-8	GP-045689-01	Hook Driving Rod Oil Guard	7	A-44	PN-000750-02	Looper Driving Crank Pin	29	H-1
GP-045465-01	Oil Pump Housing	35	K-9-1	GP-045690-01	Fixing Block	15	C-49	PN-000751-01	Looper Lever Driving Rod Pin	29	H-8
GP-045466-00	Oil Gauge Window	35	K-1-1	GP-045691-01	Fixing Block Holder	15	C-50	PN-000752-01	Head Key	7	A-38
GP-045467-00	Oil Indicator	35	K-2-1	GP-045692-01	Oil Guard	7	A-42	PN-000753-01	Taper Pin (Ø6 L18 1/50)	7	A-41
GP-045468-00	Oil Indicating Floater	35	K-2-2	GP-045694-00	Crank Shaft Oil Guard	7	A-36	PN-000760-00	Spring Pin(Ø1.5)	29	H-3
GP-045469-00	Oil Receiver(Front)	35	K-17-1	GP-045695-00	Silicone Oil Tank Lid	13	C-24-1	PN-000777-00	Spring Pin	13	C-24-2
GP-045470-00	Oil Receiver(Front) Pipe	35	K-17-2	GP-045696-01	Silicone Oil Tank	13	C-24-6	PN-000779-00	Spring Pin	23	F-7
GP-045471-01	Oil Receiver(Rear)	35	K-3-1	GP-045697-00	Silicone Oil Tank Bracket	13	C-24-7	PN-000780-00	Spring Pin	23	F-34
GP-045472-00	Oil Receiver(Rear) Pipe A	35	K-3-2	GP-045698-01	Chip Guard	7	A-53	PN-000781-00	Pin	31	I-9
GP-045473-00	Oil Receiver(Rear) Pipe B	35	K-3-3	GP-045699-00	Felt	13	C-24-3	RI-000006-00	Drain Hole Seal	7	A-31
GP-045474-00	Oil Receiver(Rear) Pipe C	35	K-3-4	GP-045700-01	Silicone Oil Felt Bracket	13	C-24-4	RI-000006-00	Drain Hole Seal	37	K-25
GP-045514-00	Looper Thread T-U Guide	13	C-29	GP-045701-00	Thread Guide Pipe Support A	13	C-1-3	RI-000024-00	O-Ring	35	K-5
GP-045625-00	Connecting Ball(L)	29	H-19-2	GP-045702-00	Thread Guide Pipe Support B	13	C-1-4	RI-000024-00	O-Ring(P9)	33	J-27
GP-045626-00	Looper Driving Connecting(U)	29	H-15-1	GP-045703-01	Thread Guide Plate	13	C-1-1	RI-000046-00	O-Ring(P6)	33	J-35
GP-045627-00	Looper Driving Connecting(L)	29	H-19-1	GP-045704-00	HeadCover(F) Thread Guide	15	C-47	RI-000157-01	Bushing Ring	27	G-19
GP-045628-00	Looper Driving Connecting(L)	31	I-5-1	GP-045705-00	Bushing Oil Seal	27	G-22	RI-000158-01	Thrust Ring	19	E-32
GP-045628-01	Looper Lever Driving Rod	29	H-4-3	GP-045706-00	Sleeve Oil Seal	27	G-23	RI-000160-01	Guide Ring	19	E-18
GP-045629-00	Looper Lever Driving Rod Ball	29	H-4-1	GP-045707-01	Looper	29	H-35	RI-000167-00	O-Ring	7	A-7
GP-045630-03	Knife Holder Bracket	27	G-17	GP-045708-00	Needle Guide	29	H-37	RI-000168-00	O-Ring(P12.5)	19	E-2
GP-045631-00	Needle Thread Take-Up	27	G-6	GP-045800-01	Top Cover(Middle) Hinge	7	A-16	RI-000170-00	O-Ring	35	K-22
GP-045632-00	Oil Seal	17	D-6	GP-045850-00	RodBall	27	G-1-2	SC-000096-00	Screw for Drain Hole	7	A-32
GP-045648-01	Looper Thread Tube	13	C-36	GP-045851-01	Carrier Hook Holder	27	G-4	SC-000096-00	Screw for Drain Hole	37	K-26
GP-045649-00	Looper Thread Guard	13	C-35	GP-045955-01	Oil Gauge Pipe	35	K-1-2	SC-000167-00	Screw (M4XP0.7)	43	N-10
GP-045650-00	Lap Former Slide Block	11	B-42	GP-045956-01	Oil Gauge Wire	35	K-1-3	SC-000168-00	Screw(M4xP0.7, L=20)	47	P-20-2
GP-045651-00	Lap Former Guide Plate(Left)	11	B-38	GP-046014-01	Needle Plate (6.1mm)	19	E-47	SC-000173-00	Screw	11	B-20
GP-045652-00	Lap Former Guide Plate(Right)	11	B-39	GP-046015-01	Needle Holder	19	E-42	SC-000173-00	Screw (M5XP0.8)	19	E-5
GP-045653-00	Looper Cover	11	B-23	GP-046016-01	Stitch Plate Tongue(6.1mm)	19	E-49	SC-000173-00	Screw (M5XP0.8)	33	J-12
GP-045654-00	Top Cover Thread Carrier	23	F-36-10	GP-046839-01	Model Mark (01)	11	B-15	SC-000173-00	Screw (M5XP0.8)	43	N-16
GP-045655-00	Looper Thread Guide Wire	11	B-29	GP-046840-01	Model Mark (02)	11	B-16	SC-000177-00	Screw(3/32" n=56)	39	L-19
GP-045656-00	Chain Cutting Knife	11	B-26	GP-046841-00	Tension Spring Stopper	13	C-15	SC-000234-00	Screw (M8XP1.25)	25	F-39
GP-045657-00	Chain Cutting Knife Guard	11	B-27	GP-046882-00	Shock Absorbing Rubber	41	M-7	SC-000236-00	Screw(M4XP0.7)	11	B-28
GP-045658-00	Bed Cover (Front) Gasket	11	B-6	GP-046903-00	Suction Pipe Holder	43	N-17	SC-000239-00	Screw(9/64" n=40)	29	H-36
GP-045659-01	Bed Left Screw Gasket	11	B-11	GP-046904-00	Suction Pipe	43	N-15-1	SC-000239-00	Screw (9/64" n=40)	19	E-39
GP-045660-01	Dust Defender(Upper)	11	B-34	GP-046905-00	Air Pipe	43	N-15-2	SC-000239-00	Hinge Screw	7	A-17
GP-045661-00	Dust Defender(Lower)	11	B-17	GP-046918-00	Suction Pipe Slider	43	N-5	SC-000250-00	Screw (9/64" n=40)	19	E-28
GP-045662-00	Top Cover Thread Hook	23	F-36-7	GP-046919-00	Bracket	43	N-1	SC-000252-00	Lower Knife Clamp Screw	23	F-36-17
GP-045663-00	Lap Former	11	B-41	GP-046920-00	Suction Pipe Connector	43	N-2	SC-000253-00	Screw	7	A-45
GP-045664-00	Bed Cover Upper Gasket	11	B-36	GP-046966-00	Suction Pipe Spring Holder	43	N-13	SC-000253-00	Screw	35	K-14
GP-045665-00	Thread Take-Up Oil Defender	35	K-13-1	GP-046975-00	Table	41	M-1	SC-000253-00	Screw (9/64" n=40)	19	E-38
GP-045666-00	Felt A	35	K-13-2	GP-046976-00	Fixed Table for Arm	41	M-2	SC-000253-00	SCrew(9/64" n=40)	27	G-29
GP-045667-00	Felt B	35	K-13-3	GP-046977-00	Cylinder connect Plate	25	F-38	SC-000253-00	Screw	7	A-13
GP-045668-00	Oil Pump Cover(Rear)	35	K-6-1	GP-046991-00	Flexible Hose	43	N-27	SC-000254-00	Screw	35	K-7
GP-045669-00	Oil Pump Cover(Rear) Pipe A	35	K-6-2	GP-047175-00	Oil Seal	17	D-23	SC-000270-00	Screw(3/32" n=56)	13	C-33
GP-045670-00	Oil Pump Cover(Rear) Pipe B	35	K-6-3	GP-047176-00	Oil Seal	17	D-26	SC-000399-00	Screw (3/32" n=44)	43	N-26-2
GP-045671-00	Oil Pump Cover(Rear) Pipe C	35	K-6-4	GP-047176-00	Oil Seal	35	K-9-7	SC-000586-00	Screw	9	A-59

# Index

Parts No.	Name of Parts	Page	Ref.No.	Parts No.	Name of Parts	Page	Ref.No.	Parts No.	Name of Parts	Page	Ref.No.
SC-000950-00	Screw(9/64" n=40)	13	C-28	SC-0104-5607	Screw (11/64" n=40)	31	I-1-4	SC-A301-4119	Screw(9/64" n=40)	7	A-27
SC-000984-00	Screw(M3xL4)	29	H-9	SC-0104-5607	Screw (11/64" n=40)	31	I-10-4	SC-A308-4517	Screw (1/4" n=40)	19	E-14
SC-001225-00	Bolt(M8x1140)	41	M-9	SC-0130-1230	Screw(1/8" n=44)	11	B-8	SFAM-500-001	Main Motor	39	L-21
SC-001633-01	Top Cover Oil Plug Screw	7	A-6	SC-0142-2302	Screw (1/8" n=44)	15	C-55	SN-000026-00	Nut(M4xP0.7)	47	P-20-4
SC-001634-00	Screw(M12XP1.75)	11	B-5	SC-0142-2302	Screw (1/8" n=44)	19	E-16	SN-000026-00	Nut(M4xP0.7)	47	P-20-8
SC-001634-00	Screw	35	K-12-6	SC-0142-2302	Screw(1/8" n=44)	15	C-60	SN-000046-00	Nut ( 7/32" n=32)	31	I-4
SC-001634-00	Top Cover(Front) Plug Screw	7	A-19	SC-0145-3800	Cover Screw	7	A-30	SN-000046-00	Nut(7/32" n=32)	27	G-2
SC-001635-00	Lifter Lever Stud Bolt	23	F-19	SC-0152-1800	Screw (3/32" n=56)	43	N-14	SN-000046-00	Nut(7/32" n=32)	27	G-15
SC-001636-01	Union Screw(3/32" n=56)	27	G-35	SC-0157-1230	Screw	11	B-30	SN-000046-00	Nut(7/32" n=32)	29	H-18
SC-001637-01	Screw A(3/32" n=56)	27	G-32	SC-0158-3710	Screw(9/64" n=40)	27	G-1-3	SN-000046-00	Nut(7/32" n=32)	29	H-20
SC-001638-01	Screw(3/32" n=56)	29	H-39	SC-0158-3710	Screw(9/64" n=40)	27	G-5	SN-000047-00	Nut (Left Screw 7/32" n=32)	31	I-2
SC-001638-01	Screw B(3/32" n=56)	27	G-30	SC-0158-3710	Screw(9/64" n=40)	27	G-7	SN-000047-00	Nut(7/32" n=32)	27	G-13
SC-001639-00	Presser Foot Adjusting Screw	23	F-6	SC-0158-3710	SCrew(9/64" n=40)	27	G-27	SN-000047-00	Nut(7/32" n=32.)	29	H-6
SC-001640-01	Presser Adjusting Screw	23	F-1	SC-0164-2700	Lifter Lever(Small) Screw	23	F-31	SN-000112-00	Nut (M3)	45	O-19
SC-001641-01	Screw (1/8" n=44)	19	E-36	SC-0164-2700	Screw (M5XP0.8)	19	E-30	SN-000280-00	Nut	23	F-10
SC-001642-00	Screw (3/32" n=56)	19	E-45	SC-0164-2700	Screw (M5XP0.8)	19	E-52	SN-000281-00	Presser Adjusting Nut	23	F-11
SC-001643-01	Screw (3/32" n=56)	19	E-50	SC-0164-2700	Screw(M5)	17	D-2	SN-000282-01	Nut	23	F-2
SC-001644-00	Screw (11/64" n=40)	19	E-12	SC-0164-2700	Screw(M5)	39	L-29	SN-000285-00	Nut (M3XP0.5)	33	J-42
SC-001649-00	Double Presser Foot Screw	23	F-36-11	SC-0164-2700	Screw(M5xL5)	29	H-11	SN-000286-01	Nut (7/32" n=32)	33	J-33
SC-001650-00	Screw	25	F-36-22	SC-0164-2700	Stop Plunger Pin Screw	23	F-23	SN-000287-00	Nut (7/32" n=32)	31	I-23
SC-001651-00	Chip Guard Stud Bolt	25	F-36-26	SC-0170-7400	Screw(9/64" n=40)	29	H-34	SN-000296-00	Nut(7/32" n=32)	29	H-16
SC-001652-00	Screw	23	F-36-8	SC-0174-1230	Screw(11/64" n=40)	17	D-18	SN-000298-00	Cap Nut(M8XP1.25)	41	M-5
SC-001653-00	Presser Foot Plate Screw	23	F-36-14	SC-0175-1230	Screw (11/64" n=40)	13	C-2	SN-0101-1600	Top Cover(Middle) Nut	7	A-12
SC-001653-00	Screw	11	B-46	SC-0175-1230	Screw (11/64" n=40)	33	J-8	SN-0108-2302	Nut	23	F-25
SC-001654-00	Screw	23	F-36-5	SC-0178-7400	Screw (11/64" n=40)	15	C-51	SN-0115-7400	Nut(3/16" N=32)	25	F-50
SC-001656-01	Screw (1/8" n=44)	33	J-10	SC-0178-7400	Screw (11/64" n=40)	31	I-1-2	SN-0115-7400	Nut(3/16" n=32)	27	G-3
SC-001657-00	Screw (7/32" n=32)	33	J-16	SC-0178-7400	Screw (11/64" n=40)	31	I-10-2	SN-0116-3400	Nut (1/4" n=40)	31	I-15
SC-001658-00	Screw (M3XP0.5)	33	J-41	SC-0179-3710	Screw	23	F-5	SP-000036-00	Knife Holder Spring	27	G-25
SC-001659-01	Screw (11/64" n=40)	33	J-25	SC-0179-3710	Top Cover(Rear) Screw	7	A-5	SP-000037-01	Presser Spring	23	F-3
SC-001660-00	Screw (7/32" n=32)	33	J-20	SC-0190-2700	Screw	23	F-15	SP-000042-00	Double Presser Foot Spring	23	F-36-18
SC-001661-00	Screw (7/32" n=32)	33	J-23	SC-0215-1230	Screw(9/64" n=40)	29	H-26	SP-000043-00	Chip Guard Spring	25	F-36-25
SC-001662-01	Screw (7/32" n=32)	33	J-32	SC-0215-1230	Screw(9/64" n=40)	43	N-29	SP-000044-00	hread Tension Spring	13	C-17
SC-001663-00	Screw(3/32" n=56)	11	B-35	SC-0253-7400	Screw	7	A-40	SP-000045-00	Thread Tension Spring	13	C-18
SC-001664-00	Screw (M3.5XP0.6)	31	I-5-2	SC-0307-1230	Screw (3/16" n=32)	31	I-19	SP-000046-00	Thread Tension Spring	13	C-16
SC-001664-00	Screw (M3.5XP0.6)	31	I-12-2	SC-0307-1230	Screw(3/16" n=32)	13	C-26	SP-000047-01	Thread Release Shaft Spring	13	C-12
SC-001664-00	Screw(M3.5xP0.6)	27	G-12-3	SC-0308-5607	Screw(1/4" n=40)	27	G-36	SP-000048-01	Needle Thread Spring	15	C-56
SC-001664-00	Screw(M3.5xP0.6)	29	H-4-2	SC-0309-3800	Screw	11	B-33	SP-000049-01	Top Cover(Middle) Spring	7	A-14
SC-001664-00	Screw(M3.5xP0.6)	29	H-15-2	SC-0317-2700	Presser Bar Guide Screw	23	F-12	SP-000050-01	Chip Guard Spring	7	A-54
SC-001664-00	Screw(M3.5xP0.6)	29	H-19-3	SC-0353-7400	Screw (3/16" n=32)	33	J-29	SP-000062-00	Spring	11	B-45
SC-001665-00	Screw (7/32"n=32)	31	I-21	SC-0365-3710	Screw(9/64" n=40)	27	G-8	SP-000063-00	Looper Cover Spring	11	B-21
SC-001666-00	Screw (M3.5XP0.6)	29	H-22	SC-0498-3710	Screw	35	K-11	SP-000071-00	Suction Pipe Spring	43	N-9
SC-001666-00	Screw (M3.5XP0.6)	31	I-7	SC-0502-2302	Lever Link(Large) Screw	23	F-28	SR-000004-00	Retaining Ring (E-Ring)	19	E-31
SC-001667-00	Looper Cover Screw	11	B-25	SC-0513-5050	Screw (1/8" n=44)	15	C-59	ST-000056-01	Knife Holder Shaft	27	G-28
SC-001668-00	Screw(M2xP0.4)	15	C-54	SC-0526-7600	Screw (3/16" n=28)	19	E-24	ST-000060-00	Presser Bar	23	F-13
SC-001669-00	Screw (1/8" n=44)	15	C-43	SC-0528-1230	Screw(9/64" n=40, L10)	45	O-27	ST-000061-01	Main Shaft	19	E-1
SC-001670-00	Screw(3/32" n=56)	15	C-45	SC-0528-1230	Top Cover(Front) Screw	7	A-9	ST-000071-00	Take-Up Shaft	13	C-27-2
SC-001671-01	ScrewA(M6xP1)	29	H-13	SC-0531-2302	Screw (9/64" n=40)	13	C-38	ST-000072-01	Shaft for Feed Rocker	33	J-28
SC-001672-00	Screw(9/64" n=40)	29	H-2	SC-0531-2302	Screw(9/64" n=40)	11	B-22	ST-000073-00	Shaft for Feed Driving	31	I-16
SC-001673-00	Screw(11/64" n=40)	29	H-32	SC-0532-2302	Screw(15/64" n=28)	13	C-11	ST-000074-01	Looper Driving Shaft	29	H-23
SC-001674-00	Head Plug Screw	7	A-33	SC-0540-7600	Screw	23	F-21	ST-000076-01	Looper Lever Shaft	29	H-12
SC-001675-00	Chip Guard Screw	7	A-55	SC-0542-1230	Screw	35	K-9-6	ST-000077-02	Main Crank Shaft	19	E-17
SC-001676-00	Screw	7	A-21	SC-0542-1230	Screw (11/64" n=40)	19	E-8	ST-000078-00	Tension Release Shaft	13	C-13
SC-001677-00	Screw	35	K-10	SC-0542-1230	Screw(11/64" n=40)	29	H-28	ST-000079-01	Tension Post	13	C-21
SC-001696-00	Lap Former Front Screw	11	B-44	SC-0543-2302	Screw (11/64" n=40)	33	J-5	ST-000080-00	Oil Pump Gear Shaft(Long)	35	K-9-3
SC-001697-00	Lap Former Rear Screw	11	B-43	SC-0547-3900	Screw(9/64: n=40)	11	B-14	ST-000081-01	Oil Pump Gear Shaft(Short)	35	K-9-2
SC-001698-00	Screw(M22XP1.5)	11	B-10	SC-0549-2302	Screw (1/8" n=44)	33	J-43	WS-000133-00	Washer	29	H-5
SC-001702-00	Screw (3/32" n=56)	15	C-61	SC-A117-4417	Screw (1/4" n=40)	19	E-13	WS-000202-00	Washer	41	M-10
SC-001707-02	Head Screw	7	A-34	SC-A131-4522	Screw (1/8" n=44)	15	C-48	WS-000216-00	Washer	31	I-14
SC-001726-00	Screw(M8XP1.25)	41	M-3	SC-A131-4522	Screw(1/8" n=44)	13	C-30	WS-000548-02	Steady Washer	27	G-11
SC-001740-00	Screw	11	B-40	SC-A301-4119	Screw (9/64" n=40)	13	C-24-8	WS-000558-00	Steady Washer	31	I-13
SC-001744-00	Screw (M5XP0.8)	43	N-12	SC-A301-4119	Screw (9/64" n=40)	19	E-22	WS-000560-01	Ball Washer	29	H-40
SC-001763-00	Screw(29/256" n=48)	29	H-38	SC-A301-4119	Screw (9/64" n=40)	33	J-38	WS-000561-00	Chip Guard Washer	7	A-52



